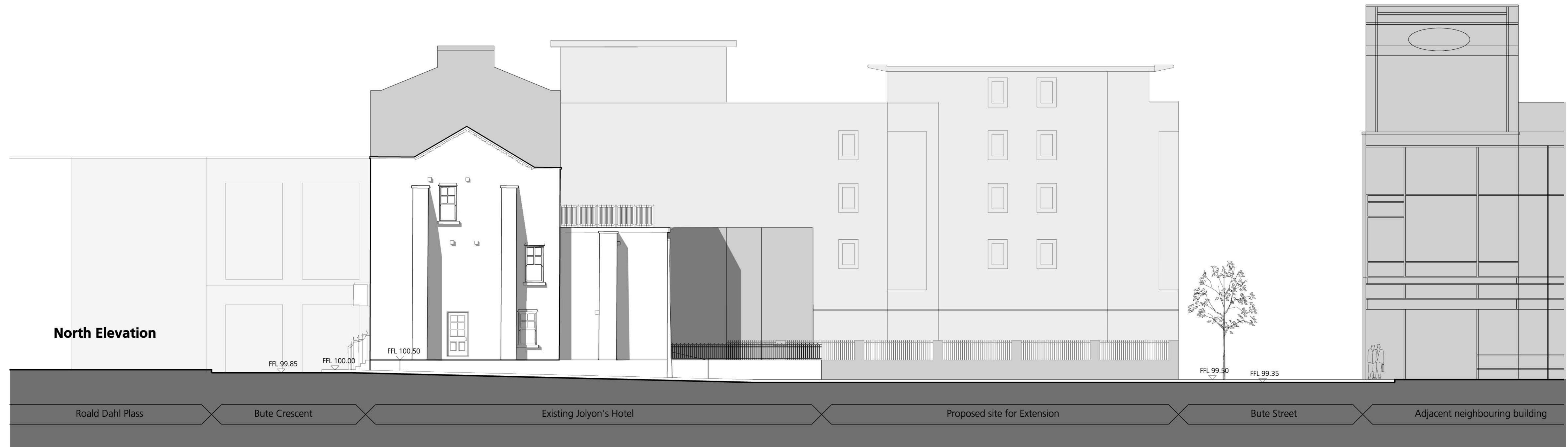


**East Elevation**



**North Elevation**



14-40 - 04-07-2008  
 Q:\307064\_Jolyons\Coan\Plot Files\1-1200 Planning\1.000\400 Existing Elevations.dgn

Revision	Description	By	Date	Revision	Description	By	Date	Revision	Description	By	Date
P	Issued for planning	KPC	080702								

Note:  
 DO NOT SCALE. Use figured dimensions only.  
 The contractor is required to check all dimensions before the work is put in hand.  
 © All copyrights Austin-Smith Lord LLP  
 This drawing must only be used for the purpose for which it is supplied and its contents must not be reproduced for any purpose without written permission.  
 No areas indicated, or areas calculated from this drawing should be used for valuation purposes or as the basis for development contracts.  
 Austin-Smith Lord LLP is a limited liability partnership registered in England & Wales. Number OC313624

Drawn	KPC	Austin-Smith Lord LLP
Date	080623	Architects Designers Planners
Checked	PTB	Landscape Architects
Date	080702	one Dunleavy Drive
Scale	1:100 @ A1	Cardiff CF11 0SN
Status	PLANNING	T 02920 225 208 F 02920 225 230 e cardiff@austinsmithlord.com

**Austin • Smith • Lord**  
 Project Jolyon's Boutique Hotel, Cardiff  
 Description Existing East and North Elevations  
 Job No. 307064 Drawing No. L(00)200 Revision P