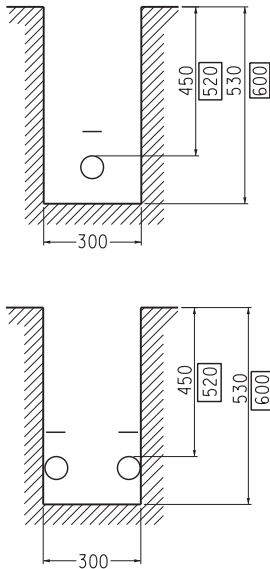
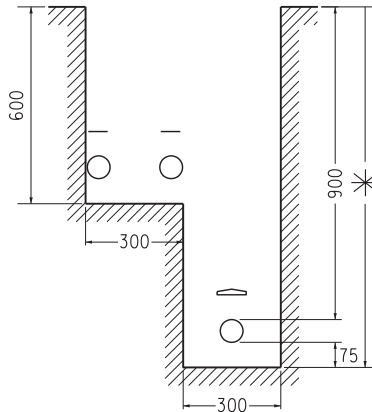


## FOOTWAYS & ROADWAYS

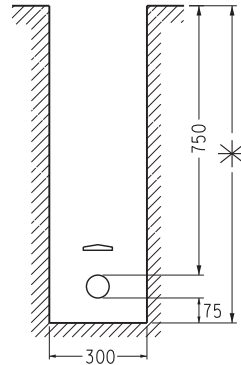
### LV & 11kV Cables



### LV, 11 & 66kV Cables



### 33kV Cables



#### KEY:

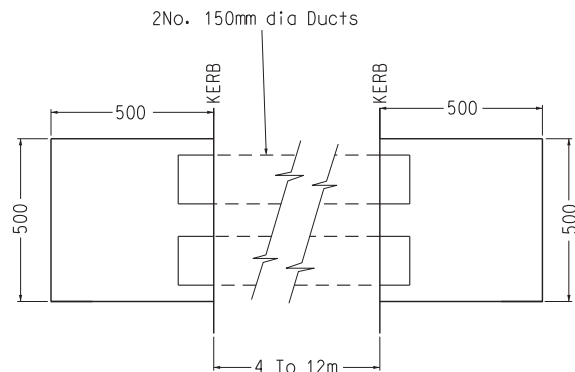
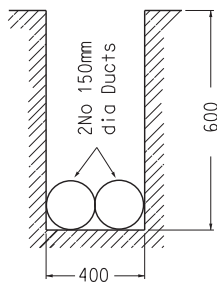
- 100 Dimension in Footway
- 100 Dimension in Roadway
- Marker tape
- Plastic marker tiles (or equivalent)
- This can represent a three core cable or a triplex cable at hv

#### Notes:


1. Marker tape to be laid 75mm above LV & 11kV Cables.
2. Plastic marker tiles (or equivalent) to be laid 75mm above 33 66 & 132kV Cables.

## ROAD CROSSINGS.

### LV & 11kV Cables.



The crossing is to include laying 2No. 150mm dia ducts (provided by WPD), a 500x500mm opening in the footpath each side of the road, removing and reinstating kerb edges as necessary and complete reinstatement on completion of works.

7	RJB			07/11	TEXT ADDED							
Rev No	Drawn	Chk'd	App'd	Date	Revision							
ORIGINAL ISSUE		DATE		WESTERN POWER DISTRIBUTION Design Department. Avonbank,Feeder Road,Bristol BS2 0TB Tel: 0117 933 2000 Fax: 0117 933 2001.					 <b>WESTERN POWER DISTRIBUTION</b>			
Drawn	R.J.B.	11.97										
Checked												
Approved												
SCALE		N.T.S.		Title LV.11,33 AND 66kV ARRANGEMENT AND DIMENSIONS OF TRENCHES FOR CABLES.					Drg. No. 3.2a		Rev No 7	

ALL RIGHTS ARE RESERVED TO WPD (South West) plc. NO PART OF THIS DRAWING MAY BE REPRODUCED OR TRANSMITTED IN ANY FORM OR BY ANY MEANS, INCLUDING PHOTOCOPYING AND RECORDING, OR STORED IN A RETRIEVAL SYSTEM OF ANY NATURE, WITHOUT PERMISSION.