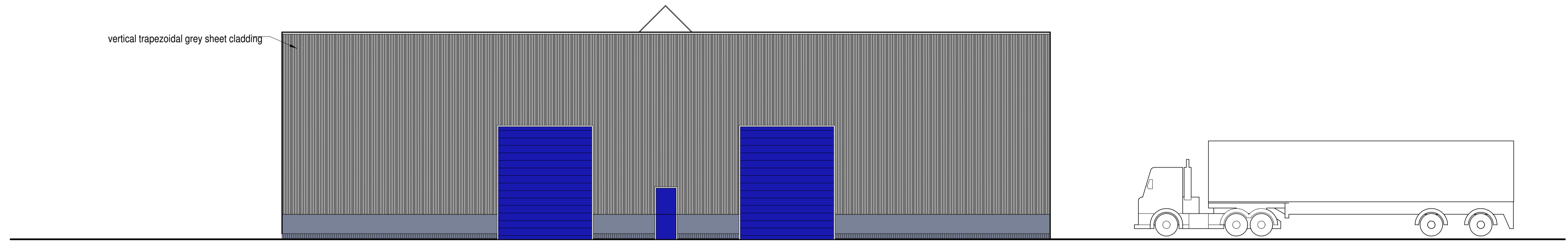
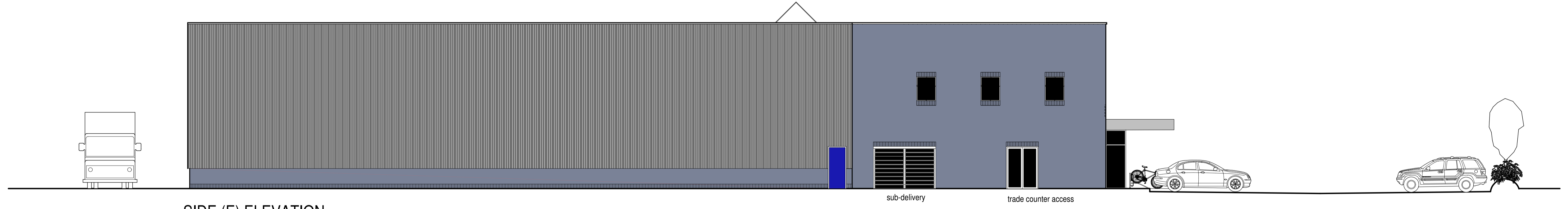


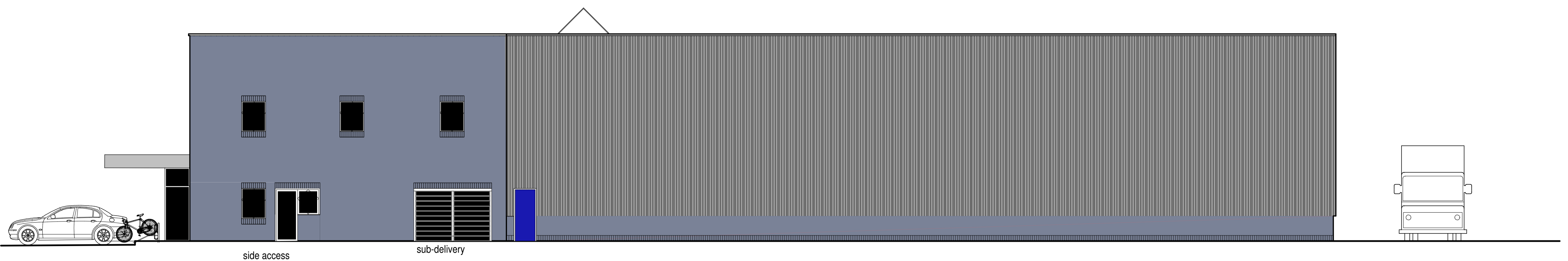
FRONT (N) ELEVATION



REAR (S) ELEVATION




SIDE (E) ELEVATION



SIDE (W) ELEVATION

D	Cladding revised; notes added	SNBW	21.11.17
C	Levels revised	SNBW	13.11.17
B	Floodlight revised; bikes added	SNBW	10.11.17
A	brick and cladding colours amended	SNBW	20.10.17
rev	description	author	date


Stephen Waldron Architects Ltd
 07584 056 714; 01685 647 618; enquiries@stephenwaldronarchitects.com; www.stephenwaldronarchitects.com

client: Moller PCI
 project: New HQ site, Garngoch Business Village Swansea, SA4 9WF
 drawing title: Proposed elevations

drawing no.	scale	date	signed
1622.PLO3D	1:100 @ A1	12.10.17	SNBW