

# **Uplands Initiative**

## **Gwaunceste**

### **Archaeological Survey**



Report by: Trysor

For: The Royal Commission on Ancient  
and Historical Monuments (Wales)

March 2007



# **Uplands Initiative**

## **Gwaunceste**

### **Archaeological Survey**

By

Jenny Hall MIFA & Paul Sambrook  
Trysor

Trysor Project No. 2007/87

**For: The Royal Commission on Ancient  
and Historical Monuments (Wales)**

Royal Commission Ref. No. RCS 1/2/56

March 2007



*Cover photograph: Cnwch Farm, near Glascwm, Radnorshire with Colva Hill in the background.*

## 1.1 Crynodeb

Cyflawnwyd arolwg archaeolegol yn ardal astudiaeth Gwaunceste gan gwmni Trysor yn ystod haf 2006 a dechrau 2007, gyda chymorth ariannol trwy brosiect Menter yr Uwchdiroedd y Comisiwn Brenhinol ar Henebion Cymru. Gorwedd ardal yr astudiaeth tua'r dwyrain o dref Llanfair ym Muallt, yn agos i bentrefi bychain Glasgwm, Llanfair Llythfynwg a Hundred House. Cofnodwyd bron i 400 o safleoedd ac olion archaeolegol newydd yn y maes o fewn yr ardal dan sylw, sy'n ymestyn dros 19 cilomedr sgwâr o fynydd-dir, sydd yn bennaf yn dir garw, heb ei wella. Roedd presenoldeb rhedyn, grug a mwyr bach duon ar draws rhannau sylweddol o'r ardal yn gwneud gwaith maes yn anodd, ac oherwydd hynny gwnaed y rhan fwyaf o'r gwaith maes dros fisoedd y gaeaf, ar adeg pan oedd y llystyfiant wedi gwywo.

Cafwyd bod yr ardal yn gyfoethog iawn mewn tystiolaeth archaeolegol am weithgarwch dynol. Ychydig iawn o'r dystiolaeth sydd yn dyddio i'r oesoedd cynhanesyddol, er bod 13 garnedd yma o Oes yr Efydd, prawf pendant bod y dirwedd yma wedi cael ei defnyddio gan gymunedau dynol dros 3,000 mlynedd yn ôl. Mae'r rhan fwyaf o dystiolaeth archaeolegol yr ardal yn gysylltiedig ag ymgais fawr i fyw a ffermio ar y tir yn ystod y canoloesoedd a'r cyfnod ôl-ganoloesol cynnar. Cofnodwyd nifer uchel o lwyfannau yn yr ardal y credir iddynt fod yn olion aneddiadau, yn dyddio i'r cyfnod ôl-ganoloesol cynnar. Daethpwyd o hyd i weddillion nifer o dai hirion, cytiau hirion a bythynnod hefyd, enghreifftiau o amrywiaeth o fathau o aneddiadau yma sy'n gysylltiedig â gweithgarwch dynol wnaeth parhau i mewn i'r 19eg a 20fed canrifoedd.

Heddiw, tir mynyddig, garw yw'r rhan fwyaf o'r tir o fewn yr ardal astudiaeth, llawer ohono wedi cael statws Safle o Ddiddordeb Gwyddonol Arbennig oherwydd amrywiaeth a chyfoeth ei bywyd gwylt, yn enwedig ei adar. Er hynny, mae'n amlwg bod ymdrech fawr wedi ei wneud yn y gorffennol i gau i mewn a ffermio'r tir, gan gynnwys tiroedd dros 450m. Mae ardaloedd eang lle gwelir hen gwysi a dorwyd wrth aredig y brynau canrifoedd yn ôl, llawer ohono bellach yn guddiedig o dan drwch o redyn, grug a mwyr bach. 'Does neb yn gwybod i ba gyfnod mae'r olion hyn yn perthyn, ond y tebyg yw mai yn ystod y canoloesoedd neu yn gynnar yn y cyfnod ôl-ganoloesol y digwyddodd.

Yn ystod cyfnodau diweddarach, ffermio bugeiliol sydd wedi dod i'r bri yn yr ardal a defnyddir y tiroedd comin hyn bellach fel porfeydd haf ar gyfer defaid. Mae'n debyg bod ymgais wedi digwydd yn ystod y 18fed ganrif i ddiffinio ffin y comin yn well. Cloddiwyd nifer o chwareli bychain i gael cerrig er mwyn adeiladu cloddiau i ddiffinio'r ffin a chadw anifeiliaid ar y comin ac i ffwrdd o'r caeau a phentrefi yn y cymoedd cyfagos. Mae nifer fawr o lwybrau wedi ymddangos i roi mynediad i bob rhan o'r mynydd-diroedd yma. Crëwyd nifer sylweddol o lynnoedd bychain er mwyn rhoi dŵr i anifeiliaid sy'n pori'r brynau hefyd. Nid yw pridd tenau'r ardal yn dal llawer o ddŵr, sydd i'w gael yn naturiol dim ond mewn ambell i nant fechan neu bwl mawn corsio.

Yn fwy diweddar, mae'r brynau hyn wedi cael eu defnyddio gan saethwyr yn hela grugieir. Mae'r ardal yn frith ag olion hen lwyfannau saethu, tystiolaeth am un ffordd o reoli'r adar sy'n byw ar y tir yma. Mae'r grugiar yn dal ymhlith yr adar sydd i'w cael yma. Yn fwyfwy mae cerdded, seiclo a motorbeicio yn dod ag ymwelwyr newydd i fryniau Gwaunceste, ac yn creu problemau newydd ar gyfer diogelu treftadaeth a byd natur yma. Y gobaith yw y bydd cofnodi archaeoleg y brynau yn fanwl yn ychwanegu at allu pobl i fwynhau a deall yr ardal yn well, ac yn gymorth i'r gwaith o ddiogelu olion bregus rhag niwed dianghenraid.

## **1.2 Summary**

An archaeological field survey of the Gwaunceste area was undertaken by Trysor during the summer of 2006 and early part of 2007, grant aided as part of the RCAHMW's Uplands Initiative project. The area lies to the east of Builth Wells and is ringed by the villages of Glaswrm, Gladestry and Hundred House. Fieldwork identified nearly 400 new archaeological sites and features in a study area which extended over 19 km<sup>2</sup> of predominantly unimproved mountain pasture. The presence of bracken, heather and bilberry over much of the study area caused considerable difficulty for the field survey, most of which could not be undertaken until the winter months, when the bracken in particular had withered.

The study area was found to be rich in archaeological evidence of human activity. Relatively little of this evidence relates to the prehistoric period, although 13 Bronze Age round barrows have now been identified within the area, providing solid proof that the landscape here was exploited by human communities over 3,000 years ago. The rest of the archaeological evidence is largely the product of attempts to settle or farm the land during medieval and post-medieval times. A significant number of platforms are recorded within the area, many of which are suspected to be former dwelling sites, probably of early post-medieval date. A number of longhouse, long hut and cottage sites are also recorded, indicating a variety of settlement types associated with human habitation that extended into the 19<sup>th</sup> and 20<sup>th</sup> centuries.

Most of the landscape within the area is now rough, hill pasture, a large part of which is designated as a Site of Special Scientific Interest due to its rich flora and fauna, particularly its bird-life. However, it is clear that in previous centuries considerable efforts were made to enclose and farm the land, even up to altitudes over 450m. Extensive tracts of ridge & furrow cultivation ridges are found across the study area, often now partly obscured by thick heather and bilberry vegetation. It is not known when the effort to settle and farm the area occurred, but a medieval or early post-medieval date is likely.

During more recent centuries, a regime of pastoral farming has held sway and the commons are now the preserve of flocks of sheep during the summer months. It seems likely that during the 18<sup>th</sup> century attempts to properly define the common boundary were made. Many small quarries were dug to provide stone for boundary walls to better define the common edge and keep stock on the hill pastures and away from the enclosed lands on the lower-lying, inhabited valleys. Numerous trackways have appeared on the commons to provide access to all parts of the hills. A large number of ponds have also been created for grazing animals. The thin soils of the hills of the study area do not retain much water, which is confined to a small number of streams and the occasional mire or “mawn pool,” to use the Radnorshire term.

A more recent use for the heather-clad hills has been their use for grouse shooting as a recreational activity. The area is dotted with lines of shooting stands, now all apparently disused that testify to one method for the management of the grouse population, for which the area is still known. Increasingly, walking, cycling and motorbiking are bringing new users to the Gwaunceste hills, presenting new problems for the management of heritage and environmental sites. The comprehensive record of archaeological features that has been created by this project will hopefully enhance the enjoyment and understanding of the area in future, whilst serving to protect its heritage from avoidable damage.

### 1.3 Introduction.

This field project and related desktop research was undertaken by Trysor during 2006-2007, grant-aided by the Royal Commission on Ancient and Historic Monuments in Wales (RCAHMW).

Desktop research was undertaken during May and June 2006, and the fieldwork was carried out over 14 days divided between the periods June-July 2006 and January-February 2007. Problems caused by thick bracken and heather cover were responsible for this division of the fieldwork into two halves, as considerable portions of the study area are effectively unsurveyable during the summer and autumn months. The final report was compiled during March 2007.

The area was designated as “Gwaunceste” and was focused on an extensive upland block that lies to the east of Builth Wells. As shown in Figure 1, the area is divided into three distinct hill-blocks; Bryn y Maen to the north (481m), Colva Hill to the east (532m), with Gwaunceste Hill (542m) forming the highest block at the centre of the study area. Gwaunceste Hill has two smaller outlying blocks on its western and southern flanks, both known as Little Hill, reaching 491m and 469m respectively.

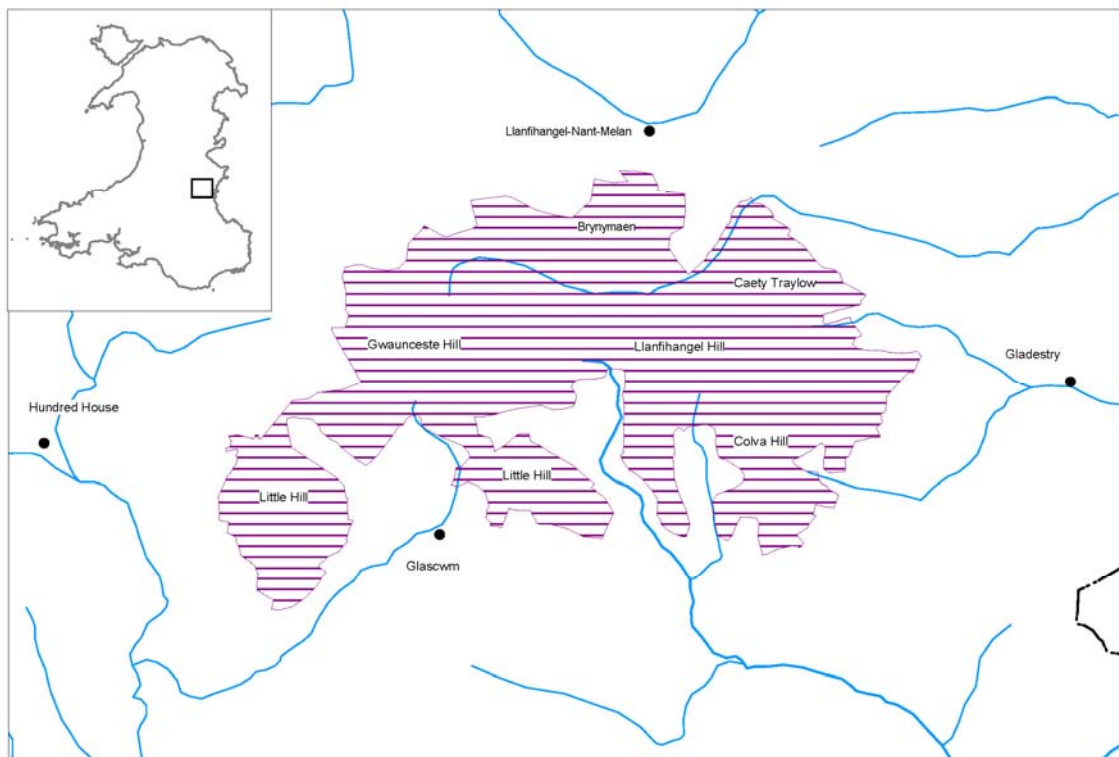


Figure 1: Location of study area

These hill blocks are divided from each other by a number of small river valleys which rise on the slopes of the study area. The most significant of these are the Gilwern Brook, which flows eastwards out of the study area, dividing Bryn y Maen from Gwaunceste Hill and Colva Hill and the River Arrow, which flows southwards from the heart of the area and divided Gwaunceste Hill from Colva Hill.

The hills of the study area form an island of unimproved ground surrounded by rich farmland, where only a few small villages are found, including Glascwm, Gladestry, Llanfihangel-Nant-Melan and Hundred House. Much of this upland includes rich heather moorland of a predominantly dry heathland type. The area is especially interesting because of its moorland birds and is actively managed for one of the largest red grouse populations in Wales.

### **1.3.1 Extent of area covered in km<sup>2</sup>**

The extent of the Gwaunceste study area is 19km<sup>2</sup>. Most parts of the study area were accessible for field survey as there were no forests, bogs or bodies of water of significance within the area. Most of the area was open access under the CROW Act 2000.

### **1.3.2 Previous Fieldwork**

Some archaeological fieldwork had been carried out in the survey area prior to this project which had informed the database records of the NMR and HERs. The earliest identified fieldwork was undertaken by the RCAHM prior to 1913, when a series of site visits were made during the preparation of the Inventory of Ancient Monuments for Radnorshire (RCAHM, 1913). In 1978, a report of 16 house platforms at Gelli Dywyll was made in the Transactions of the Radnorshire Society (Anon, 1978, 13).

The Clwyd-Powys Archaeological Trust (CPAT) undertook two phases of fieldwork in Radnorshire as a part of the Cadw grant-aided Deserted Rural Settlements project. These occurred in 1996-97 and 1998-99 and included some site visits and desktop research relevant to the Gwaunceste Study area.

In 2002-3, CPAT also carried out a survey of the Bronze Age monuments of the part of the study area as part of the Cadw grant-aided Prehistoric Funerary and Ritual Monuments Project (CPAT, 2003).

With regard to the general archaeology of the area, CPAT have carried out a windfarm assessment at Rhiew Farm that overlaps the northwestern corner of the study area (Silvester, 2002).

### **1.3.3 Methodology**

#### *Desktop Research*

Digital data from the databases maintained by the NMR (RCAHMW) and the Powys Historic Environment Records (held by CPAT) were the starting point for the desktop

research undertaken prior to the fieldwork. The information on 1st, 2<sup>nd</sup> and 4<sup>th</sup> edition Ordnance Survey maps was interpreted and records created for sites of interest within the scope of the project. The relevant parish tithe and estate maps held by the National Library of Wales were also consulted. Documentary records in the NMR and aerial photographs were also studied. The Rhiew Farm windfarm assessment report produced by CPAT in 2002 (Silvester, 2002) is not available for public consultation, but the records created by the work are available from the regional HER.

The results from the desktop research were entered into a Microsoft Access 2003 database, constructed according to the guidelines given in the Revised Data Standard for Upland Survey. The material included in this database is reproduced in the site gazetteer of this report.

### *Fieldwork*

Physical access to the area was possible from public roads to the north and south of the study area, particularly the minor road between Hundred House and Gladestry.

The fieldwork element of the project achieved an average coverage rate of 1.5km<sup>2</sup> per day. 30m and 50m transects were used according to the nature of the terrain (wider transects favoured on steeper slopes). There were very few areas where transect walking could not be employed, but the value of field-walking was impaired in extensive areas due to the presence of thick heather, bilberry or bracken growth. This problem was so severe during the summer months that it proved necessary to suspend fieldwork until the winter, and it was not until January 2007 that the bracken cover had decayed sufficiently to continue. Even during the winter months, however, most of the higher land is covered in a thick mat of heather, usually up to 30cm deep, which makes fieldwork difficult.

Open access was permitted to most of the area, apart from a block of private farmland along the Gilwern Brook, at the northern edge of the survey area. There has been an historic access problem to this area, although a network of public footpaths and bridleways is accessible and did make it possible to investigate the area to a satisfactory degree, although not by transect walking. It should be noted that this was mostly an area of heavily improved pasture, within which any archaeological surface features are likely to have been lost to a substantial degree. The small field system at Pantglas was also excluded from the transect survey, but this too was visible from close distance and is well improved ground (see Figure 2).

Features were recorded on pro-forma sheets derived from the database. This had a two-fold benefit: ensuring previously recorded information was readily available in the field and that standard recording of features was undertaken. The pro-formas had space for field sketches which were made where appropriate. The pro-forma sheets have been deposited with the RCAHMS as part of the project archive. Digital photographs were taken where appropriate and these have also been included in the project archive as TIFF files.

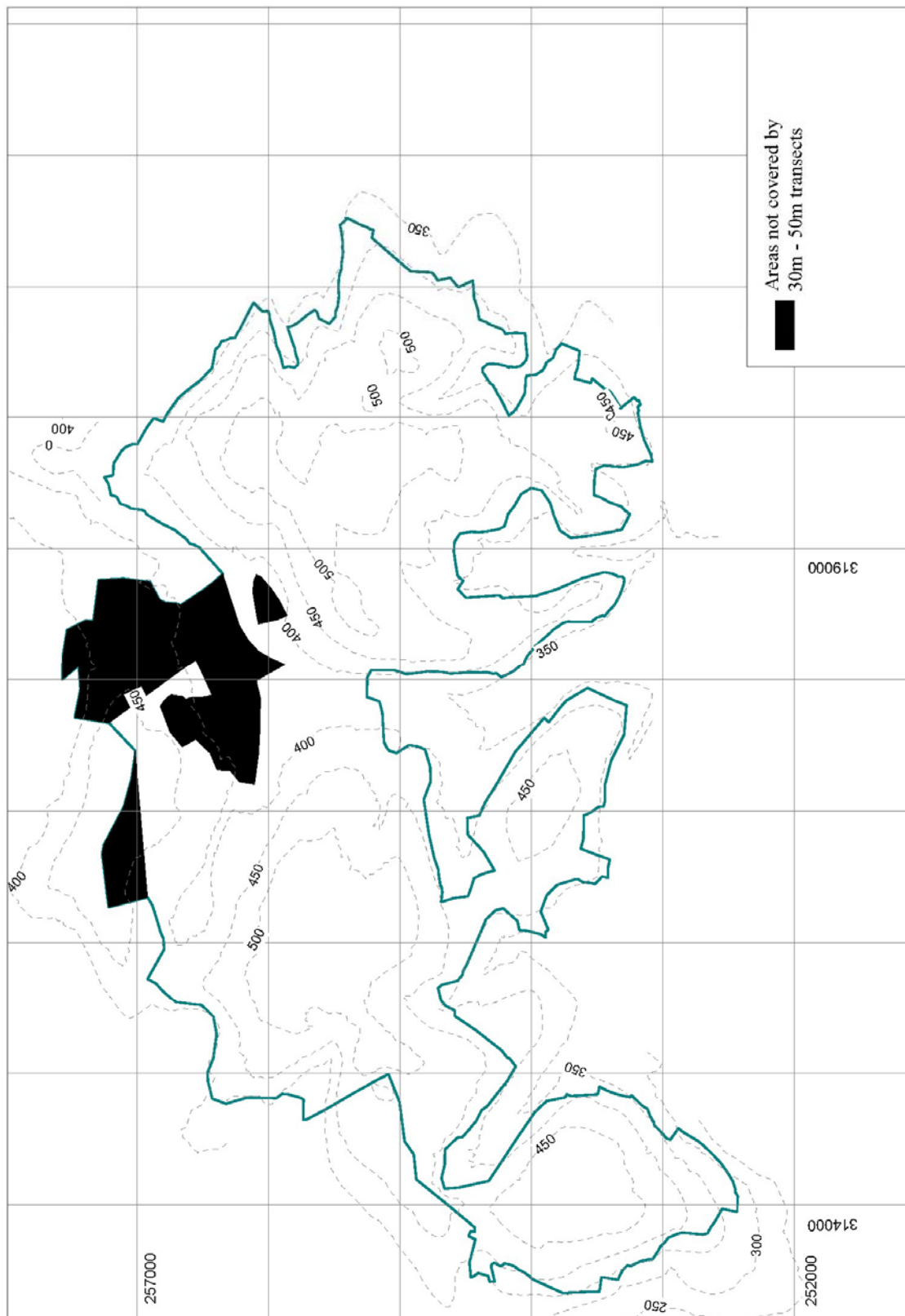


Figure 2: Study area showing areas not covered by transects



## 2. Analysis of Sites recorded in the Survey Area

### 2.1 Number of sites

Prior to this survey, only 10 archaeological sites were recorded within the survey area in the RCAHMW's National Monuments Record database. Following the field survey there were a total of 380 sites recorded within the study area, representing an increase of 3800%. (The total of 380 sites includes 3 previously existing NPRNs for a group of house platforms at Gellidywyll, NPRNs 306127-129, which have been re-recorded with new NPRNs, but the original numbers have not been deleted).

There were also 54 sites recorded in the Clwyd/Powys regional Historic Environment Record (HER).<sup>1</sup> These sites have been re-evaluated in the field and new NMR records created in most cases. However, some of the sites in the HER could not be located, or the records were found to be erroneous, and these have not been included in the project database. Therefore there will not be a direct correlation between the NMR records and those found in the regional HER.

Location maps for all sites recorded by the project can be found in the second part of this report, preceding the Site Gazetteer.

### 2.2 Summary of sites by Broad Class

Broad Class	Number	Includes
Agriculture and Subsistence	42	Cultivation Ridge, Field System, Plantation, Sheep Fold
Civil	1	Triangulation Point
Domestic	15	Cottage, Deserted Rural Settlement, Farmhouse, Long Hut, Longhouse
Industrial	75	Quarry
Monument <By Form>	135	Bank (Earthwork), Ditch, Earthwork, Enclosure, Mound, Platform, Shelter
Recreational	34	Shooting Stand
Religious, Ritual and Funerary	13	Round Barrow
Transport	26	Trackway
Unassigned	7	Hollow, Outbuilding, Pit, Scoop, Stone, Stone Pile
Water Supply and Drainage	32	Dam, Drainage Channel, Leat, Pond, Spring, Water Channel, Well

The 380 sites recorded by the project are shown categorised by their Broad Class<sup>2</sup> in Table 1 and Fig 3.

*Table 1: Broad Class*

<sup>1</sup> Maintained by the Clwyd/Powys Archaeological Trust.

<sup>2</sup> Broad Class is used as defined by English Heritage in the monuments thesaurus, <http://thesaurus.english-heritage.org.uk>

The breakdown of sites by Broad Class shows the predominance of features associated with the settlement, management of and access to the land within the study area for agricultural purposes.

Of the 380 sites recorded, only 13 (3.5%) are prehistoric funerary and ritual monuments, and a further 34 (9%) are Recreational (associated with shooting activities). This means that some 87% of the sites recorded are associated with some form of land management or settlement. This includes the 75 Industrial sites recorded, which are quarries related to the quarrying of stone to build or face the boundary banks between the mountain common and the enclosed land. The 32 Water Supply and Drainage sites are almost all associated with the provision of drinking water for grazing animals.

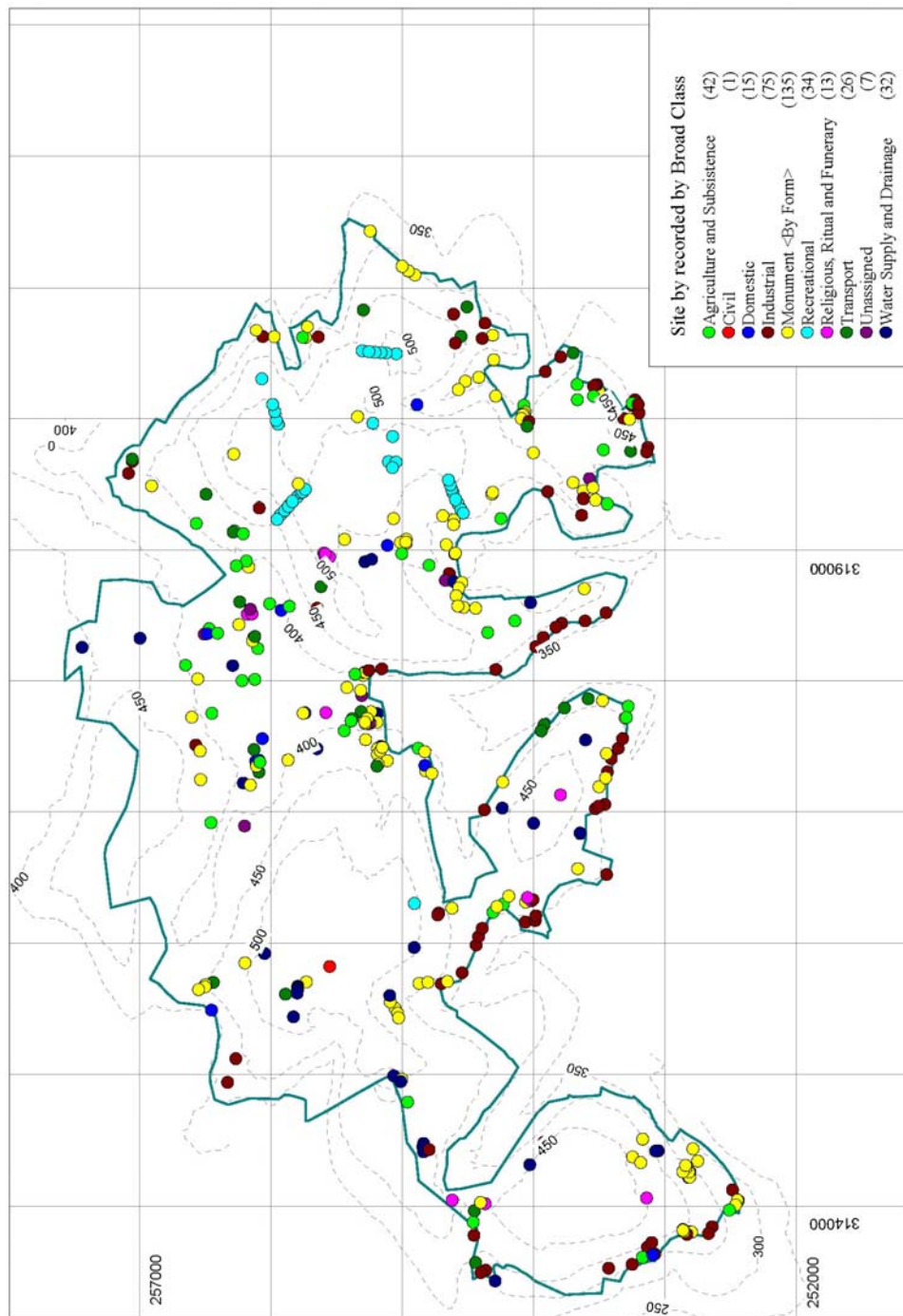


Figure 3: Distribution of sites by Broad Class

## 2.3 Summary of sites by Period

Figure 4 shows that most of the 380 sites recorded in the study area date to the post-medieval period. 91 sites (24%) are attributed to the post-medieval, and a further 146 (38%) thought to be potentially or probably post-medieval. This directly relates to an increase in settlement and associated agricultural activity during the post-medieval period. A further 32 sites (8.5%) are likely to be of post-medieval or modern date. This means that as many as 70.5% of all the sites recorded in Gwaunceste are thought to be of probable or potential post-medieval date, mostly related to settlement and land management activity.

The 86 sites (22.5%) attributed to the modern period, or thought likely to be modern, are all associated with recreational shooting or water management within the study area.

The very low incidence of sites attributed to the medieval period reflects an absence of information relating to the deserted settlements and agricultural activity within the study area. With medieval, possibly even early medieval, ecclesiastical activity known at nearby parish church sites such as Glascwm, Colva and Gladestry, there is little doubt that there was a well-developed medieval community in the area, and that the hills of the study area would have been exploited fully. A series of pillow mounds along the northern side of Gilwern Brook, just outside the study area, demonstrate quite clearly the degree to which medieval society exploited the local terrain. However, it is simply not possible to demonstrate which sites within the study area might derive from the medieval period. The 8 sites which are thought to be medieval, or possibly medieval, in date or origin are settlement or land management related features.

There are 13 Bronze Age funerary and ritual sites recorded, 6 of which are thought to be certain round barrows and a seventh (NPRN 289027) thought to be a probable example. 6 other mounds are possible funerary monuments and have been ascribed a Bronze Age? date as they could not be identified with certainty on the basis of surface evidence. Appendix B expands Table 2, giving the NPRN and name of the sites in each period.

Period	Number	Includes
Bronze Age	6	Round Barrow
Bronze Age?	7	Round Barrow
Medieval?	3	House Platform
Medieval?;Post Medieval?	5	Longhouse, Enclosure, Bank, Platform
Post Medieval	90	Platform, Deserted Rural Settlement, Farmstead, Quarry, Trackway, Cultivation Ridges, Field banks and systems
Post Medieval?	148	Platform, Quarry, Trackway, Cultivation Ridges, Sheep Fold, Banks, Long Hut
Post Medieval?;Modern	32	Water drainage features, Quarry, Bank, Cultivation Ridges
Modern	44	Shooting Stand, Water supply
Modern?	10	Pond, Terraced Ground
Unknown	35	Mound, Platform, Gully, Trackway, Stone

*Table 2: Sites by Period*

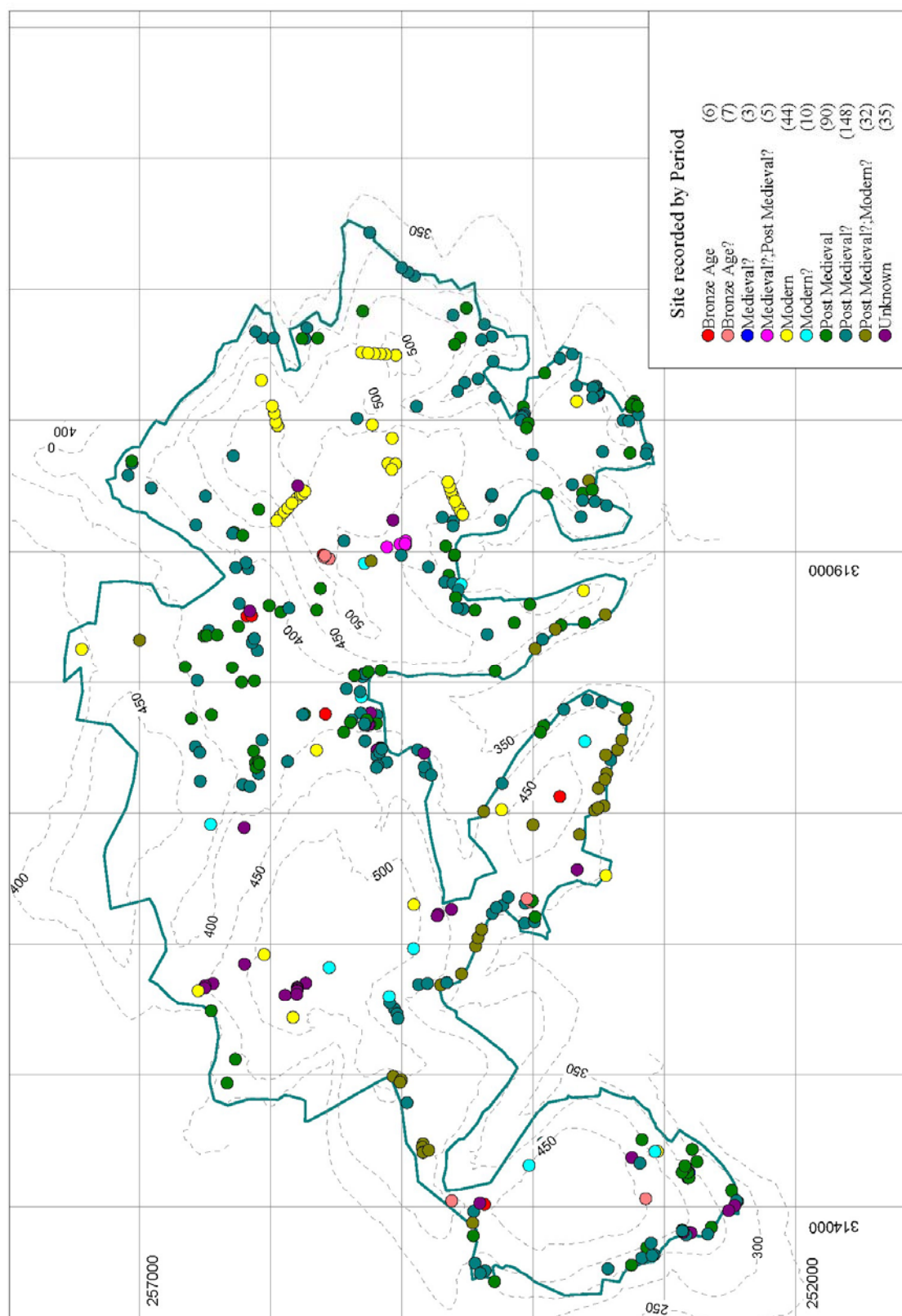


Figure 4 – Distribution of sites by Period

## 2.4 Summary of sites found by type

Table 3 shows the range and numbers of site types recorded by the project. A fuller breakdown of this information is found in Appendix A and detailed site descriptions are included in the Site Gazetteer in Part 2 of this report. Figs 7, 8, & 9 also map the distribution of the most significant site types.

BANK(EARTHWORK)	46	PLATFORM	33
BARN	1	PLATFORM?	8
BUILDING	2	POND	18
BUILDING PLATFORM	3	POTATO CLAMP?	1
BUILDING?	1	QUARRY	71
COTTAGE	1	QUARRY?	4
CULTIVATION RIDGE	22	QUARRY?;PLATFORM?	3
DAM	1	ROUND BARROW	6
DESERTED RURAL SETTLEMENT	1	ROUND BARROW?	7
DITCH	3	SCOOP	1
DRAINAGE CHANNEL	2	SHEEP FOLD	2
DRAINAGE SYSTEM	1	SHEEP FOLD?	2
EARTHWORK	7	SHELTER	1
ENCLOSURE	14	SHELTER?	2
ENCLOSURE?;BUILDING?	1	SHELTER?;PLATFORM?	1
FARMHOUSE	2	SHOOTING STAND	33
FARMSTEAD?	1	SHOOTING STAND?	1
FIELD	1	SPOIL TIP	1
FIELD SYSTEM	4	SPRING	1
FINDSPOT	1	STONE	1
HOLLOW	1	STONE PILE	1
LAZY BEDS?	1	STONE SPREAD	1
LEAT	1	STRUCTURE	1
LEAT?	1	TERRACED GROUND	2
LONG HUT	5	TRACKWAY	24
LONGHOUSE	1	TRACKWAY?	2
MOUND	12	TRIANGULATION POINT	1
MOUND?	1	WATER CHANNEL	6
OUTBUILDING	1	WELL	1
PIT	1		
PLANTATION	4		

*Table 3: Sites by Type*

## 2.5 Summary of sites by Altitude

Table 4 shows the number of sites per 50m contour band, the amount of land in each 50m band and the density of sites per square kilometre. Figure 5 shows the distribution of sites over the 50m contour bands.

Of the 6 contour bands, the 2 of lowest altitude are less than 0.25km<sup>2</sup> in area and cannot be relied upon to present statistically meaningful information.

67.5% of the study area falls between the 400m and 500m contours (13.39km<sup>2</sup>). However, the greatest concentration of sites are found between 350m and 450m, with 268 of the total of 380 sites (70%) falling within this range. Undoubtedly, this reflects the concentration of quarries, settlement sites and associated features around the common edge. It is noticeable that the greatest concentrations of sites per square kilometre occur at lower altitudes.

Appendix C provides details of site by NPRN, Name and contour band.

Contour band	Number of sites	Sq km	Sites per sq km
250m to 299m	-	0.02	-
300m to 349m	11	0.21	52.38
350m to 399m	126	3.42	36.84
400m to 449m	142	7.28	19.51
450m to 499m	66	6.11	10.80
500m to 549m	35	2.72	12.87
<b>Total</b>	<b>380</b>	<b>19.76</b>	

*Table 4: Sites by contour band*

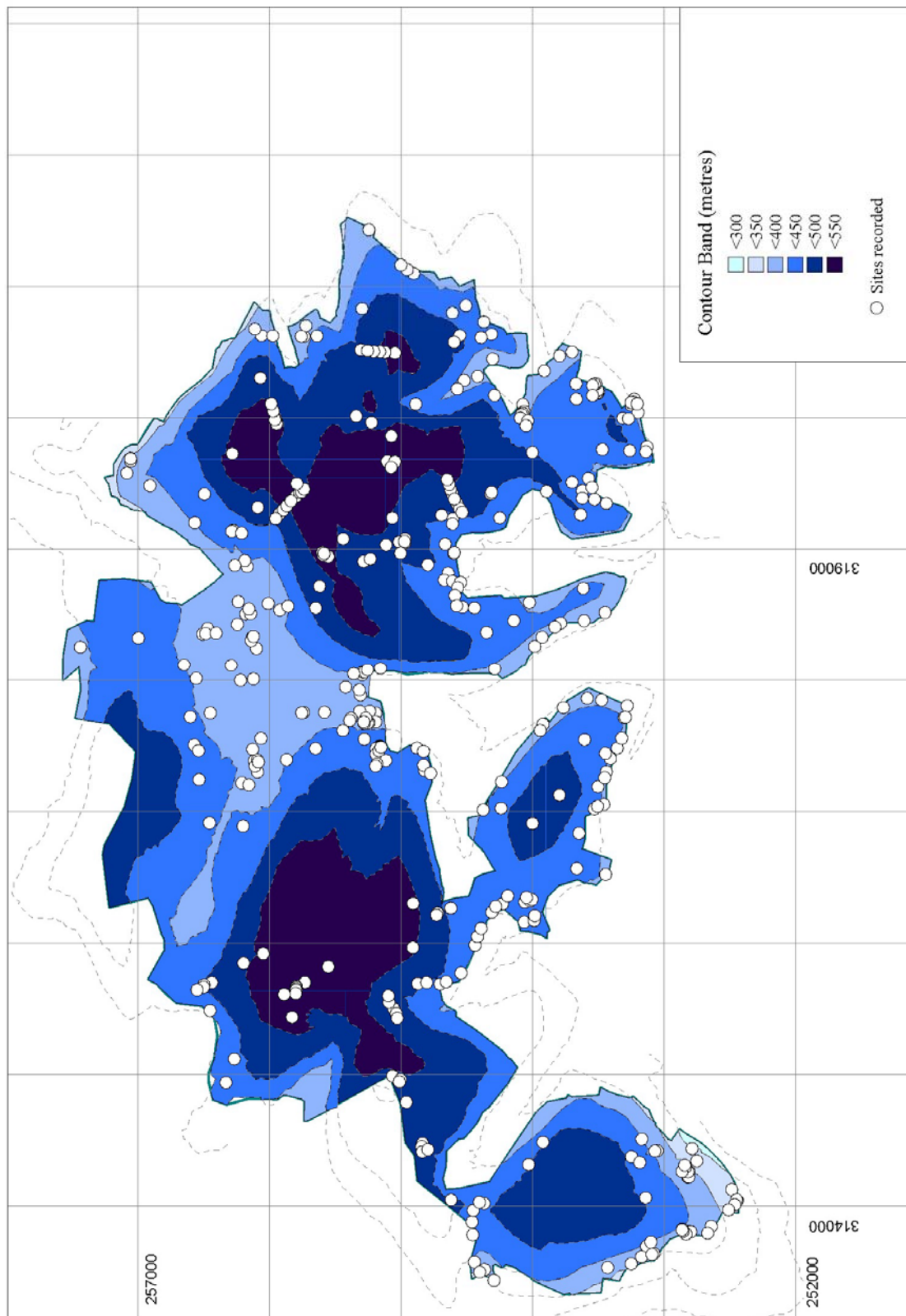


Figure 5 – Distribution of sites by Altitude

## 2.6 Significant new sites

Some significant new sites have been recorded by the project. This is particularly true of prehistoric funerary monuments and deserted settlement sites. Other important discoveries include an increased awareness of the extent of cultivation on the hills in the Gwaunceste study area and the recognition that much of the quarrying that has occurred can be directly attributed to attempts to build boundary walls to clearly demarcate the boundaries of the common.

### *Palaeoenvironmental features*

Surprisingly little of the Gwaunceste study area exhibits peat deposits or even peaty soils. Deep peat deposits are confined to a number of “mawn pools” or small mires that are dotted across the hills. The Welsh word for peat, *mawn*, has survived in the English dialect of Radnorshire and indicates the presence of peat at such sites. The most significant of these are the Beili Bedw Mawn Pool (SO1630056560) and the Mawn Pool between Caety Traylow and Colva Hill (SO1996055760). The Blaen-heath Mawn Pool (SO1638055020) no longer appears to include a body of water and has largely been overgrown by heather, but may still have significant peat deposits. These sites are likely to present the best locations for palaeoenvironmental study and are therefore of great importance. One of the greatest unanswered questions relating to past land use in the area is the date of the extensive areas of cultivation across the parish commons. Clearly palaeoenvironmental study might offer the best opportunity to arrive at an explanation of what crops were grown in the area and when.

The soils of the eastern part of the study area, especially on Caety Traylow and Colva Hill are peaty in character, but generally quite thin and not thought to present opportunities for palaeoenvironmental study.

### *Funerary monuments*

There were 5 Bronze Age round barrows recorded in the NMR for the study area at the outset of the 2006-2007 project (NPRNs 24594, 306091, 306098, 308021 & 308023). Several mounds recorded during fieldwork are thought to be probable or possible round barrows. Two of these sites are thought to be likely round barrows (NPRNs 289103 & 289027) and they appear to be undisturbed, although somewhat denuded.

Three small mounds (NPRNs 289147, 289148 and 289217) were recorded in close proximity to the disturbed round barrow on Llanfihangel Hill (NPRN 306098). It is possible that these are related to the main barrow.

### *Medieval and Post-Medieval settlement and cultivation*

The hills of the Gwaunceste study area, and neighbouring upland blocks, have long been recognised as possessing a significant number of deserted settlement sites. These include bare platforms, long huts and associated enclosures and ploughlands, extending into areas well above 400m OD. At the outset of this project there were only 3 deserted settlement sites recorded in the NMR within the area. These were 3 platforms (NPRNs 306127-129) within a larger group of platforms at Gelli Dywyll. During 2006-2007, a total of 62 settlement-related features had been recorded.





*Plate 1: NPRN 289166 & 289167, two platforms or a longhouse? The smaller platform (NPRN 289167) is situated immediately above the main platform. The two platforms may represent the sites of a dwelling and byre, built in the longhouse tradition, or two separate structures.*



*Plate 2: NPRN 289212, barely visible under the thick heather and bilberry cover, this rectilinear earthwork in Cwm Griffin is one of the few structures recorded away from the common boundary. It appears to be the wall footings of a building, possibly a dwelling, and displays one of the key characteristics of a longhouse, namely a step down in floor level from one end to the other.*

The most significant of these include a deserted settlement site at Cwm Griffin (NPRN 289212 – see Plate 2). This site was recorded as a longhouse and may be associated with a nearby enclosure (NPRN 289209) and area of cultivation (NPRN 289213). It has been thought that the longhouse was not a building form used in this part of Wales (Silvester, RJ in Roberts, K ed., 2006, 20), therefore this site is considered to be of some significance.

The date and function of the nearby enclosure NPRN 289209 is unknown. The enclosure appears to have been intended as an animal fold, and two short antennae banks that run northwards and eastwards from the main bank are suggestive of it being associated with stock management. However, a possible hut or hut circle (NPRN 289345) within its banks may indicate a settlement site. Surface remains alone do not permit a clearer interpretation of this site, but there are no comparable features in the area and therefore it is considered to be a significant discovery.

The number of platforms recorded by the project makes it difficult to single out particularly significant examples of this site type. A platform pair on Colva Hill (NPRNs 289205 & 289206) is amongst the most visible and best preserved examples encountered. Platform pairs are encountered on the mountains of much of mid- and west-Wales and are a distinctive settlement type.

An unusual platform or platform pair was recorded at the southern end of Colva Hill. NPRNs 289166 & 289167 can be interpreted either as two separate platforms or as two elements of a longhouse type site (see Plate 1). NPRN 289167 is a small platform that sits above the northern end of platform NPRN 289166, where it is terraced into the slope.

Several fine individual platforms were recorded, including large examples such as Little Hill I (NPRN 289018 - 20m x 9m) and Cwm Ceste (NPRN 289141 – 20m x 5.5m). The main platform at Bryntegan (NPRN 289166) measured 19m x 6.25m and it should be noted that a possible midden mound was present immediately alongside (NPRN 289168). A large platform situated in a sheltered valley on the southeastern side of Colva Hill (NPRN 289177) measured 19.5m x 6m and was associated with a small field system and small ancillary platforms.

Discrete groups of platforms were also encountered. The most significant of these was at Gelli Dywyll, where 7 platforms were recorded despite thick bracken cover (NPRNs 289080 & 289081 and 289362 – 289367). A group of 3 well preserved platforms and ancillary features was noted at Clas Brook (NPRNs 289061, 289064 & 289065). Another group of 4 well-preserved platforms and ancillaries was recorded on the eastern side of Gwaunceste Hill, in the valley of the River Arrow (NPRNs 289104 - 289106 & 289110).

One of the most significant settlement complexes encountered was the Beili Bedw Deserted Rural Settlement site (NPRN 289350). Unfortunately, this site was inaccessible as the landowner could not be traced, and could only be viewed from adjacent land. This was sufficient, however, to recognise that the complex is relatively well preserved and certainly in need of detailed analysis. At least three buildings are present (NPRNs 289262, 289263, 289303) as well as an enclosure (NPRN 289349) and a series of trackways and banks. There also appears to be a large earthwork dam (NPRN 289261) across the Gilwern Brook just to the east of the complex, the purpose of which is unclear, but may be relevant to the history of the settlement.

Although it is impossible to prove a direct relationship between settlement and cultivation within the study area, it was noted that most of the platforms encountered were in close proximity to areas of ridge and furrow cultivation. No examples were noted where cultivation ridges continue over settlement features, which may indicate that the settlements must be contemporary or later features. The extent of ridge and furrow across the study area is not properly conveyed by the allocation of NPRNs to over 22 locations where cultivation evidence was noted. Only a detailed survey of aerial photographs can possibly map cultivation in the area, which is amongst the most significant pieces of archaeological evidence relating to historic land use in Gwaunceste. Plate 3 shows a not untypical scene, in this example on the northern side of Caety Traylow, above Pantglas cottage.



*Plate 3: Evidence of ridge of furrow was noted in many parts of the study area. The northwestern flank of Caety Traylow hill had perhaps the most visible evidence. The land shown here lies between 350m and 450m OD.*



### 3. Value of AP mapping to the field project

The RCAHMW supplied interpretation of aerial photographs as digital files, referred to as AP mapping in this document. Each of these records was investigated in the field, see Fig. 6.

156 separate records were supplied with the AP mapping. 35 of these sites were found to be identifiable archaeological features on the ground and given NPRNs. A further 14 sites were found to be situated outside the project study area boundary and are not included in the site gazetteer of this report.

Overall, the AP mapping proved of little benefit during fieldwork. It is evident that heather, bilberry and bracken has masked significant parts of the landscape for many decades, undoubtedly hiding some features from the air. More significant perhaps is the nature of the soil cover across much of the study area. The soil tends to be thin and easily erodes. Therefore linear features are easily created simply through the light use of wheeled vehicles, from tractors to motorbikes. This leads to a myriad of trackways, often braiding into several parallel courses, which from the air can appear as more significant features than they are in reality.



*Plate 4: An area of heather moorland, photographed on Caety Traylow in February 2007. It is typical of the higher ground within the study area, where the density and depth of the heather makes fieldwork and site recognition extremely difficult.*

The thin soils of the study area and their poor capacity for holding rainwater also means that there are many areas where water erosion has created features that may be confused with man-made features such as trackways or ditches. These include the erosional features known locally as “riggles”, which seem to have been caused by rainwater flooding downslope and washing away strips of topsoil to create linear cuts of varying depth and length.

Some success was achieved with the identification of slight earthwork features associated with enclosures around the common boundary that were difficult to define on the ground, especially in view of the difficulties posed by vegetation. However, far more evidence for such enclosure was recorded by the field survey than appeared on the AP mapping evidence provided.

A significant amount of ridge and furrow cultivation was noted in the field across all parts of the study area, none of which was recorded in the AP mapping evidence. Later checks carried out by Trysor showed that in most cases the ridge and furrow recorded on the ground was traceable on aerial photographs of the area.

Likewise, virtually none of the deserted settlement sites identified in the field were recorded by AP mapping. The deserted settlement complex at Beili Bedw (NPRN 289350) being the only exception. In general it appears that these deserted settlements do not show up on aerial photographs as they tend to be low earthwork or bare platform sites, easily obscured by ground covering vegetation. It is perhaps significant that a number of settlement sites located on clean pasture outside the study area boundary were picked up on the AP mapping.

It can only be concluded that the AP mapping results for Gwaunceste were disappointing, especially in view of the exceptional need for such aid due to the extensive areas of bracken and heather obscuring the land surface throughout the year.

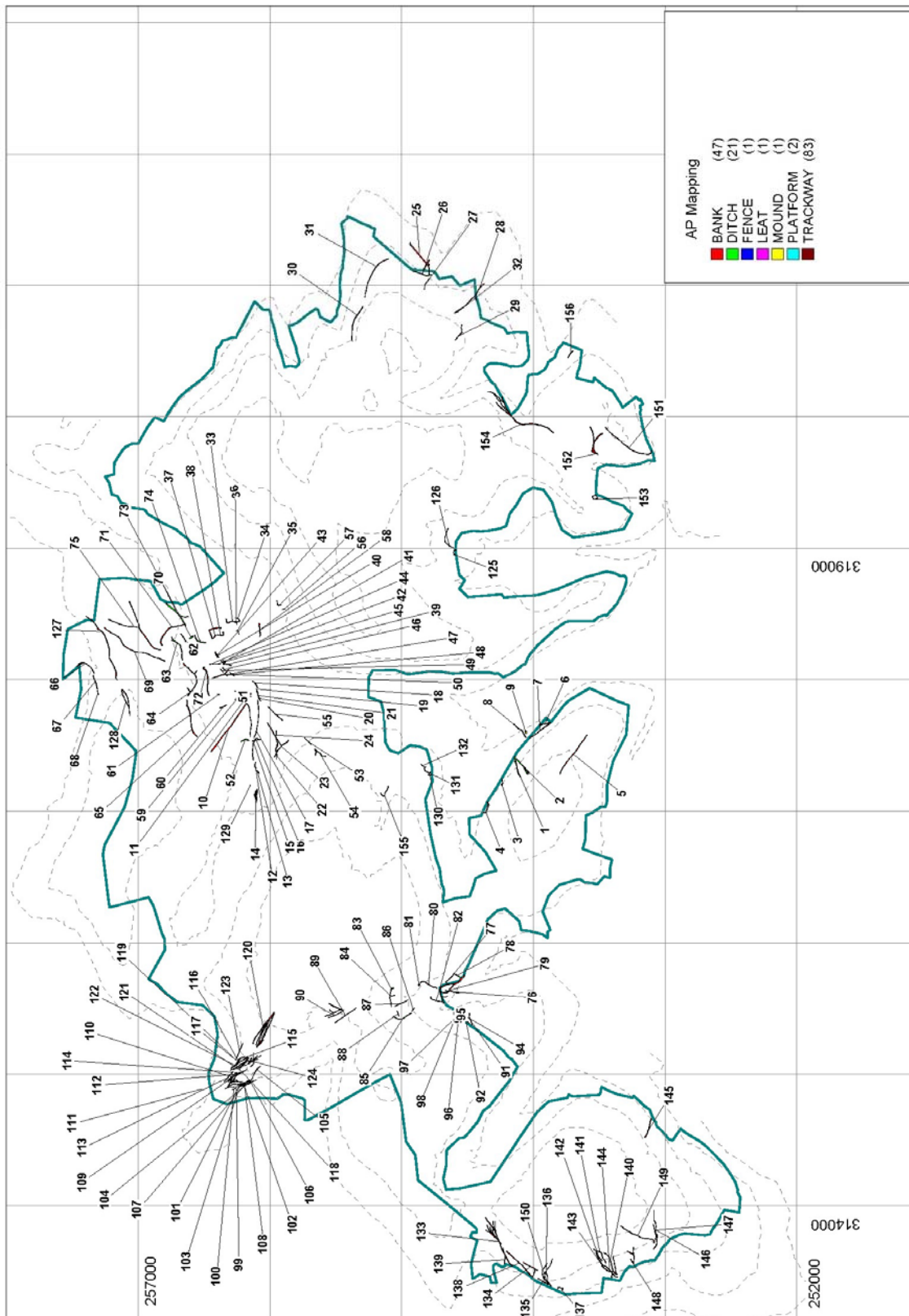


Figure 6: Features plotted by the RCAHMW from aerial photographs

## **4. Gwaunceste History and Archaeology**

### **4.1 Characteristics and comparisons**

Although the Gwaunceste study area is now a largely uninhabited upland block, with its land almost entirely used for sheep grazing, the archaeology of these hills demonstrates quite clearly that in earlier times the land has been farmed and settled to a surprising degree.

Both settlement and agriculture have now retreated to the lower-lying valleys that surround the hills of the study area, a process that seems to have been almost complete by the time that the first detailed maps were surveyed of the area, in the early 19<sup>th</sup> century. Historical sources, therefore, tell us virtually nothing about when the numerous settlements on the Gwaunceste commons were occupied, or when the uplands were ploughed and farmed, or who was responsible for these activities. Archaeology, based only on the recording of surface evidence, is similarly mute at present. Our interpretation of the past of the study area is therefore very much a matter for conjecture, aided with some knowledge of similar historical and archaeological evidence from other districts with which comparisons can be made.

The Gwaunceste study area shares many of the physical characteristics of adjacent upland areas, most obviously with regard to those characteristics associated with modern land use. The dominant industry at present is pastoral farming, with the upland pastures almost exclusively used for rearing sheep. Most of the land within the study area is used as rough upland grazing, with one relatively large area of improved pasture encountered along the upper Gilwern Brook and on Brynmaen Hill, at the northern edge of the area. Across large portions of the study area, a rich heather pasture is present, with much of the area designated as a SSSI. Bracken has invaded most of the lower slopes of the hills here, forming a dense mat of vegetation throughout the year.

The archaeology of this upland block gives important insights into the varied activities of human communities interacting with the landscape over a period of at least 3000 years. The range of archaeological site types present compares closely to that found in adjacent areas, including evidence of;

- Bronze Age funerary monuments
- post-medieval settlement, with possible medieval origins
- post-medieval or medieval land management and cultivation
- post-medieval and modern industrial activity relating particularly
  - water management
  - quarrying
  - peat cutting

A number of modern archaeological fieldwork and desktop research projects have been carried out which can help inform our understanding of the archaeology of the study area. These include the Cadw grant-aided Deserted Rural Settlement Project and Prehistoric Funerary and Ritual Monuments Project undertaken by CPAT during the 1990s and early 2000s (see Bibliography for report titles).





*Two views within the study area.*

*Plate 5: (Top) A shooting stand on Caety Traylow, with Pant Glas cottage and the upper valley of Gilwern Brook in the background.*

*Plate 6: (Bottom) Traces of medieval or post-medieval field boundaries and cultivation, NPRN 289072, on Little Hill, Glascwm, with Wern Camp hillfort (NPRN 306108 - outside the study area) centre right.*



## 4.2 Prehistory

### 4.2.1 Evidence in adjacent areas

There is little evidence of prehistoric activity within the study area itself, although several sites are known just outside the project boundaries which indicate that human communities would have been settled in the vicinity during the Bronze Age and Iron Age.

Just outside the study area, to the north, is the stone alignment known as the “Four Stones” (NPRN24592). These stones appear to be associated with the large mound known as the Brynmaen Barrow (NPRN 306079). Close by is the stone circle or possible denuded round barrow at Fedw (NPRN 306077) and the recumbent Brynmaen Standing Stone (NPRN306088). Also to the north another stone alignment (NPRN 306081) and cup-marked stone (NPRN 306082) of Bronze Age date are known at Llanerch. To the south of the study area a stone circle comprising 15 stones in a 27m circle, known as Six Stones, is recorded on Glascwm Hill (NPRN 306107).

These are only a few examples taken from a significant number of Bronze Age sites recorded in the NMR in adjacent areas, particularly along the Edw valley to the north.

### 4.2.2 Bronze Age funerary and ritual monuments (see Fig. 7)

Evidence of prehistoric activity within the study area includes 6 Bronze Age funerary cairns, several of which were unrecorded before 2006 (see Table 5).

<b>NPRN</b>	<b>Name</b>	<b>Site Type</b>
24594	GIANTS GRAVE, BARROW	Round Barrow
289103	LITTLE HILL, ROUND BARROW	Round Barrow
306091	CWMCESTE, BARROW	Round Barrow
306098	LLANFIHANGEL HILL, BARROW	Round Barrow
308023	GILWERN BROOK, BARROW II	Round Barrow
308021	GILWERN BROOK, BARROW I	Round Barrow

*Table 5: Bronze Age funerary monuments*

A further 7 sites (see Table 6) are mounds thought to be possible Bronze Age funerary monuments.

<b>NPRN</b>	<b>Name</b>	<b>Type</b>
289027	LITTLE HILL, MOUND V	Round Barrow?
289030	BLAEN BEDW, MOUND II	Round Barrow?
289308	CWM TWRCH, MOUND II	Round Barrow?
289147	LLANFIHANGEL HILL, MOUND I	Round Barrow?
289148	LLANFIHANGEL HILL, MOUND II	Round Barrow?
289217	LLANFIHANGEL HILL, MOUND III	Round Barrow?
289269	CWM TWRCH, MOUND I	Round Barrow?

*Table 6: Possible Bronze Age funerary monuments*

The only other feature recorded that was thought to be of possible Bronze Age origin was a small monolith near Beili Bedw (NPRN 289296). The stone stands at the edge of a minor stream and seems to have been deliberately set. However, it is not possible to say if it is a later boundary marker or of much more ancient origin.



*Plate 7: (Top) Possible round barrow NPRN 289361. This has also been described as a gallows mound and its rectilinear plan suggests that it may not be a prehistoric funerary monument.*

*Plate 8: (Bottom) Giants Grave round barrow NPRN 24594.*

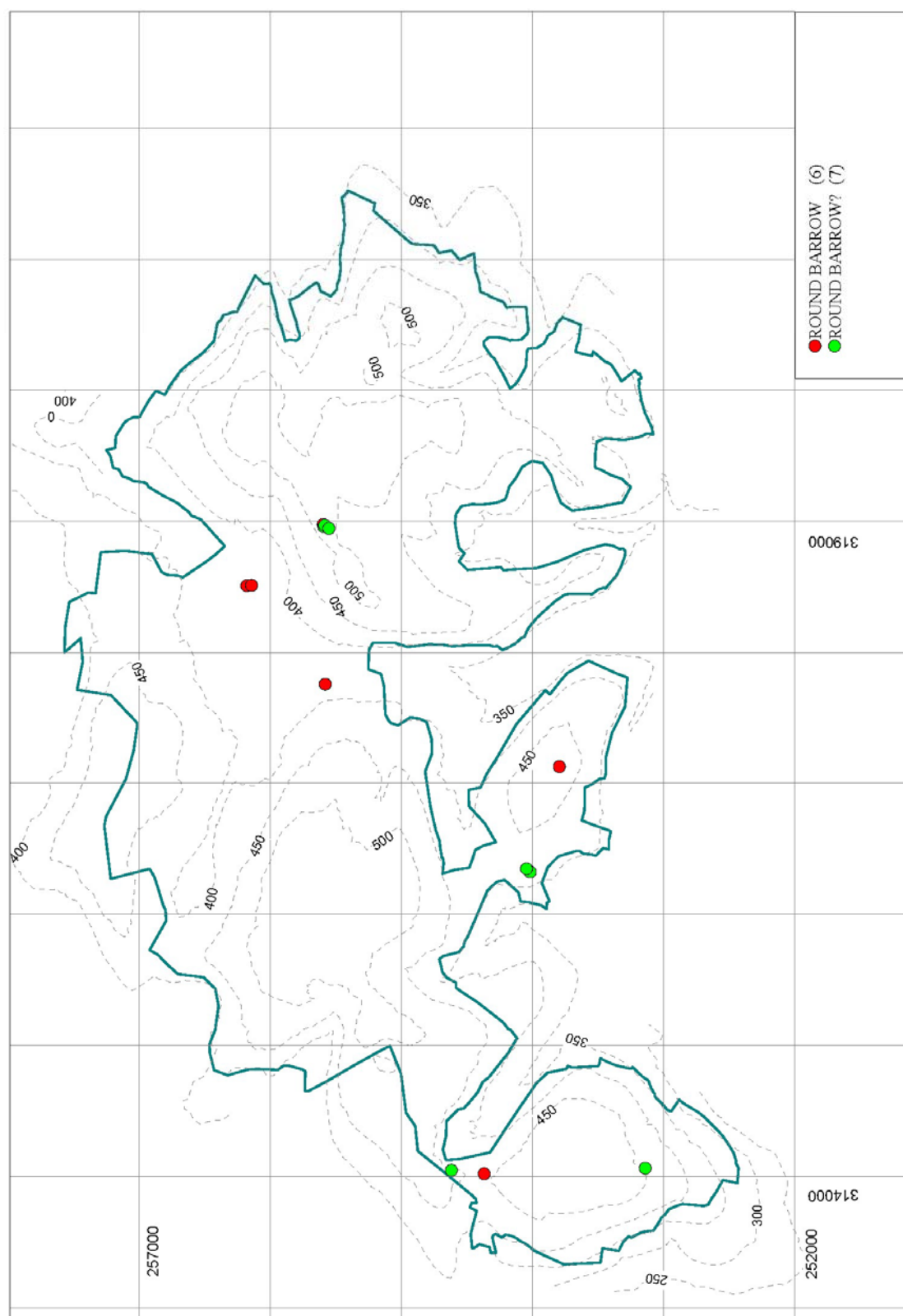


Figure 7: Prehistoric funerary and ritual sites

#### 4.2.3 Significance of the prehistoric archaeology

The relatively low number of prehistoric sites recorded within the study area might suggest that no great significance is attached to their presence, either collectively or as individual monuments. However, there are certainly aspects relating to their incidence which are worthy of discussion.

As indicated previously, there is evidence which suggests strongly that the wider district was well settled during the Bronze Age, although there is no evidence of Bronze Age settlement on the hill of the study area itself. The Bronze Age burial sites within the study area may therefore be directly associated with communities which lived and farmed in adjacent areas. In this respect the monuments of the study area are of considerable significance to our developing understanding of early societies in the district, and the way that the landscape may have been divided into areas of settlement, agricultural or funerary and ritual use.

The identification of 8 possible new funerary monuments to the NMR for this area represents an important addition to the record and confirms that the archaeological record for Gwaunceste is comparable to that of adjacent areas with regard to the presence of Bronze Age funerary monuments.

##### *Funerary monuments.*

The prehistoric funerary monuments of the Gwaunceste study area are all of the round barrow type and survive as low earthwork mounds. There is little surface stone across most of the study area and therefore stone cairns do not appear to have been constructed.

As most of the barrows recorded appear to be undisturbed or obscured by surface vegetation, there are few opportunities to comment on their internal structural details. Only one example, the scheduled round barrow NPRN 306098 on Llanfihangel Hill, is disturbed in a manner that allows some inspection of its interior. A pit dug into the centre of this barrow at some time in the past exposes some scattered stony material around what is presumed to be a disturbed central cist. However, the disturbance is such that little of this material appears to remain in situ and therefore little conclusion can be drawn from it.

One other feature of note at the Llanfihangel Hill barrow was the presence of three small mounds to the south of the barrow (NPRNs 289147, 289148 and 289217). Each was c.1m in diameter and up to 0.3m high. It must be considered possible that they could represent satellite features associated with the main barrow, similar to those observed by Trysor at large cairns in the Glaslyn (S) study area in Montgomeryshire during 2006.

It is notable that of the 13 round barrows or possible round barrows recorded in the study area, most are not positioned on hill summits. Giant's Grave (NPRN 24594) is carefully positioned in a saddle between two hills. The three barrows along the Gilwern Brook (NPRNs 308021, 308023 & 306091) are all positioned on the valley floor. The newly recorded sites on the two Little Hills (NPRNs 289027 & 289103) are on terraces off the hill summits. Only the Llanfihangel Hill barrow can be said to occupy a prominent summit position, although this too is a local summit on a ridge dividing two valleys not a true hill summit.



*Plate 9: (Top) A newly recorded barrow on the westernmost Little Hill, NPRN 289027*

*Plate 10: (Bottom) A newly recorded barrow on the easternmost Little Hill, NPRN 289103*



### 4.3 Deserted Settlements

The commons of Radnorshire have been shown by previous studies to be landscapes where well preserved evidence for deserted settlement sites of medieval and post-medieval date is found in abundance (Silvester, 1994, 1997, 1999, 2006). Prior to the 2006-2007 survey, only 3 deserted settlement sites recorded in the NMR within the study area. These were 3 platforms (NPRNs 306127-129) that form part of a larger group of platforms at Gelli Dywyll, near Glaschw.

The 2006-2007 Uplands project succeeded in recording a total of 62 settlement-related features, including 33 platforms, 5 long huts, 1 longhouse and several farmstead and cottage sites, marking a significant increase in the number and range of site types known in the study area. This increase also demonstrates that the distribution of deserted settlement sites on the Gwaunceste commons is comparable with that of other upland areas in Radnorshire and Powys.

One interesting phenomenon that should be noted is the preponderance of deserted settlement sites along the southern boundary of the study area, and in the lower terrain where the valleys of the River Arrow and Gilwern Brook meet in the centre of the study area (see Figure 8).

Table 7 shows that the most common settlement-related site type recorded in the study area is the platform. Although this term includes platforms of varying sizes and forms, most of those recorded can be described as classic building platforms, with a cross-contour platform, terraced into the slope to provide a relatively level area for a house or other building. In common with most such sites, the platforms tend to be bare, with no evidence for any structure on them. It is usually thought that this reflects the fact that the platforms date to the medieval or early post-medieval periods, when timber-framed, rather than stone buildings were commonly used.

BUILDING	2
BUILDING PLATFORM	3
BUILDING?	1
COTTAGE	1
DESERTED RURAL SETTLEMENT	1
FARMHOUSE	2
FARMSTEAD?	1
LONG HUT	5
LONGHOUSE	1
PLATFORM	33
PLATFORM?	8
SHELTER	1
SHELTER?	2
SHELTER?;PLATFORM?	1

*Table 7: Settlement related sites recorded in 2006-2007.*

With the exception of a small number of cottages and farmsteads which are known from cartographic sources to have been occupied in the 19<sup>th</sup> and 20<sup>th</sup> centuries, there is a lack of historical material relating to most of these sites. This presents a major barrier to our understanding of their true purpose and date, which is of course exacerbated by an absence of archaeological excavation evidence from the area. This means that all observations are based only on an examination of field evidence. It cannot be said with certainty that any of the platforms or long huts recorded are in fact settlement sites. Field barns and animal houses could leave similar remains.

Likewise, we cannot state that such sites are of medieval origin, or that they were occupied during post-medieval times. During fieldwork it was decided to record most of the settlement sites as being of post-medieval or probable post-medieval date. This decision is based on the reality that the post-medieval period extended over five centuries and that it is quite likely that all or most of the settlement or associated cultivation recorded in the study area was in use during that period. Allocating a post-medieval date to a site does not preclude that site having medieval origins, however. It is with these limitations to our understanding in mind that we must discuss the settlement evidence from within the study area.

#### **4.3.1. Farmsteads & Cottages**

The study area consists largely of historic common land, the boundaries of which had been largely fixed by the time of the tithe survey of the parishes which shared access to the mountain pastures, undertaken during the 1830s. Since that time there has been some intake of common land, which saw a number of cottages established on newly enclosed ground, but these sites are located outside the study area.

At the time of the tithe surveys of the 1830s, and a generation earlier when the first Ordnance Survey maps were drawn of the area, there were very few inhabited dwellings within the study area. Two of these were Pantglas (NPRN 289339) and Black Yatt (NPRN 289274), which stood in blocks of enclosed land either side of Gilwern Brook. There were also a handful of cottage encroachments on the western side of Little Hill, at the extreme western edge of the study area. These include Upper Ysgawen (NPRN 289021) and another ruined cottage (NPRN 289014), both of which fall within the study area boundary.

Unlike Pantglas and Black Yatt, the cottages on Little Hill do not appear to be shown on the 1831 Ordnance Survey map, suggesting that they are encroachments dating to the period c.1820-1835. Whereas Pantglas remains in occupation today, all the other 19<sup>th</sup> century cottages had fallen out of use by the early 20<sup>th</sup> century and are now ruinous.

The most complicated farmstead complex recorded within the study area is the Beili Bedw Deserted Rural Settlement (NPRN 289350). This complex is one of the most interesting settlement sites in the study area and includes the foundations of at least three buildings, associated enclosures and, it would appear, an earthwork dam across the Gilwern Brook. Beili Bedw does not appear on the 1831 map, although the boundary banks of its field system are shown, and by the time of the 1840 Glascwm parish tithe map the site has been turned into a nursery for local woodland plantations.

As Plates 11 and 12 show, other farmstead complexes, such as those at Cwm Shenkin and Cwm Twrch, have been situated right on the common boundary in the past. These examples,



like Beili Bedw, seem to have been abandoned before the survey for the 1831 Ordnance Survey map had been undertaken. Little can be said in way of speculation as to the date of origin of such complexes, other than to note that Beili Bedw, Cwm Shenkin and Cwm Twrch (if indeed these were the original names of the settlements) may all have their origins in a period when Welsh was still the common language of the area. It is generally accepted that Welsh as a spoken language died out in this part of Radnorshire well before the 18<sup>th</sup> century, which would tend to suggest at least an early post-medieval date of origin.

However, farmstead complexes and cottages represent only a small proportion of the overall number of settlement sites within the study area and cannot be said to be typical or necessarily representative of the settlement tradition at Gwaunceste.



*Plate 11: An abandoned post-medieval farmstead (NPRN 289198) at Cwm Shenkin, on the common edge. The dwelling site is outside the study area but ancillary folds, structures and cultivation now lie on the common.*



*Plate 12: A deserted post-medieval farmstead site at Cwm-twrch (NPRN 276091) at the edge of the common, also outside the study area, but included to show how possible boundary banks cross from the modern day enclosed land onto the common (to the left and above the settlement). These potential boundary banks were not identifiable on the ground during fieldwork due to the thick bracken cover across the common.*



*Plate 13: Pant Glas Cottage (NPRN 289339) is the only inhabited dwelling within the study area and sits within its own field system (NPRN 289340).*



*Plate 14: Black Yatt (NPRN 289274) was a small farmstead, deserted by the mid-20<sup>th</sup> century. The house was blown up in the 1960s when it featured in a film about the Second World War (“It Happened Here”, 1966).*

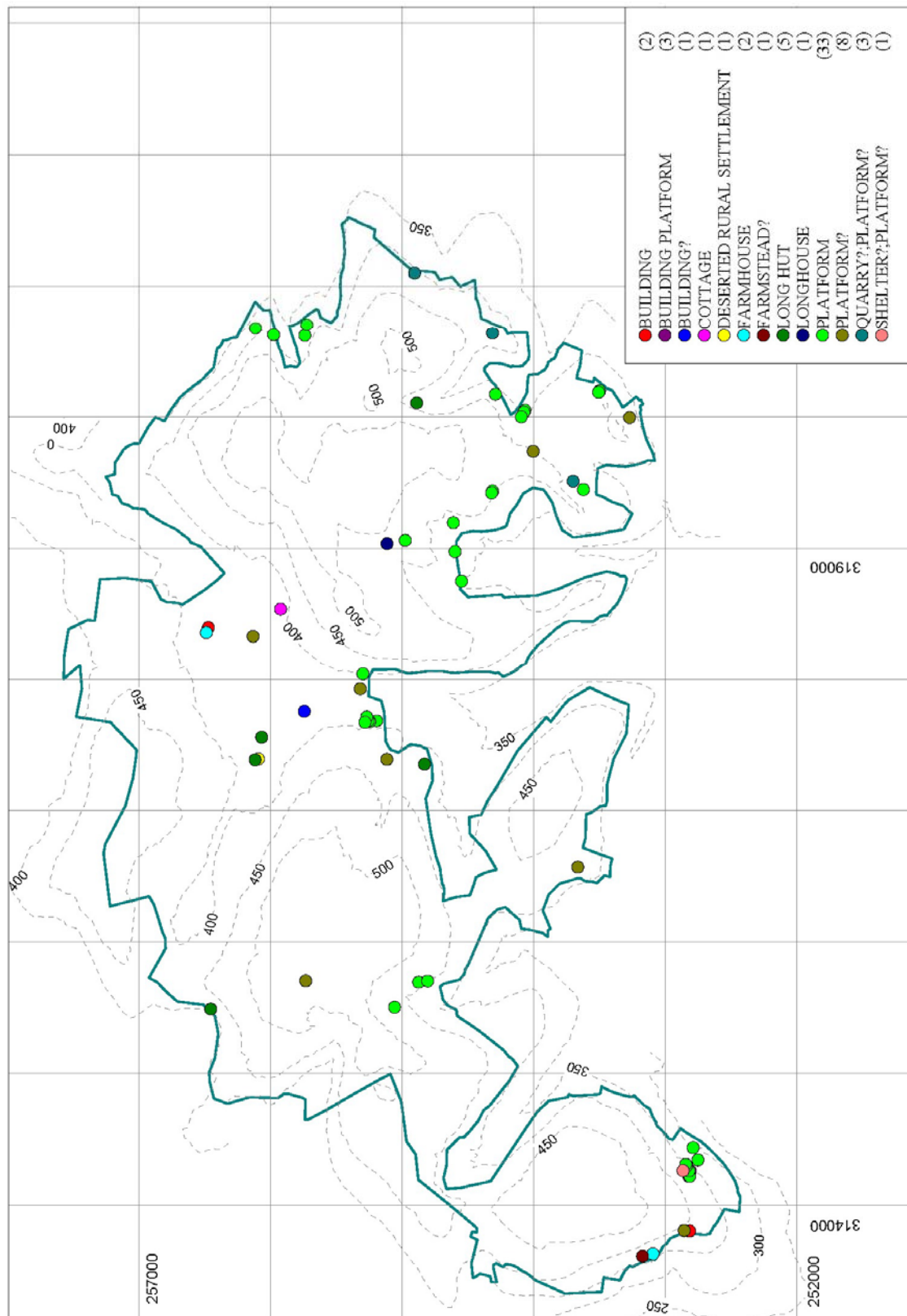


Figure 8: Settlement sites



#### 4.3.2 Platforms, Longhouses and Long Huts

Deserted farmsteads and cottages are not the only evidence for settlement in the study area. A number of platforms were recorded for the first time during fieldwork, as well as a smaller number of long huts and longhouses. Some of these structures may represent earlier, seasonal settlement, associated with the medieval *hafod* tradition, whilst others may have simply been ancillary to other settlements, having been built as shepherding huts, field barns or animal folds and shelters.

There is only one site recorded as a longhouse in the study area. Interestingly, this site (NPRN 289212 – Plate 2) is located high up in the Cwm Griffin valley, well away from the common boundary. It is the only structure in the study area that displays the characteristic change of internal floor level that is seen in a typical longhouse. In the immediate vicinity, along the eastern side of Cwm Griffin, is an extensive area of cultivation ridges, now obscured by a thick carpet of heather and bilberry, suggesting that the land here was last ploughed some considerable time ago. Nearby is the Cwm Griffin Enclosure (NPRN 289209), a sub-circular earthwork enclosure which is possibly associated with stock control.



**Plate 15:** The Beili Bedw deserted settlement site (NPRN 289350) in the upper Gilwern Brook valley. The presumed dwelling is clearly seen as an earthwork in the centre of the photograph. Note the land improvement either side of the valley.

Long huts are also rarely encountered in the Gwaunceste study area, with only 5 recorded examples. NPRN 289231, in a sheltered stream valley east of Colva Hill, is a very denuded example, and would almost certainly not have been visible if it was not located on a patch of heather-free ground. It is a stark reminder that such ephemeral sites are unlikely to be found by fieldworkers in those areas presently covered by heather or bracken.

Two long huts are recorded as part of the Beili Bedw Deserted Rural Settlement. At least one of these is likely to have been the dwelling of the complex (NPRN 289303 - pictured in Plate 15) and the other (NPRN 289263) an ancillary building of some kind. This reinforces the point that not all settlement type sites are necessarily dwellings.



*Plate 16: NPRN 289205, the largest of a pair of platforms on the western side of Colva Hill.*

By far the dominant settlement type is the platform, as many as 44 of which were recorded, 33 of which could be described as “classic” platforms, terraced cross-contour into hill slopes to create level areas. However, platforms are found in a variety of contexts, including as groups, pairs and single examples, indicating that they represent sites with a variety of functions and cannot be treated as a homogenous group.

As has been described in 2.6 above, platform groups are encountered within the study area and are considered to be of some significance. This particularly true of the platforms in the Gelli Dywyll group, on Little Hill, several of which have SAM status (RD168). This group includes NPRNs 289080-289081; 289362-289365 & 289367. When viewed in 2006, the site was obscured by bracken, but it was evident that the platforms of the group varied in size considerably. The largest of the group (NPRN 289080) was over 20m long, whereas other examples were around 10m in length. None

of the platforms in the group shows any structural remains on their terraces, which means that little can be said about either their purpose as individual features or as a group.

Another group of five platforms on Gwaunceste Hill, north of Cwm Ceste Farm, NPRNs 289104-289106, 289108, 289110 were not obscured with bracken when viewed. These also included a variety of platform sizes indicative of a variation in purpose from platform to platform. At the centre of the group appear to be two large platforms (NPRNs 289105 & 289106 – Plate 16), positioned side by side. As with the Gelli Dywyll group, there are no structural features of note that can explain the purpose of any of the features included in the group.

Such platform groups are unlikely to be the remains of single farmstead settlements. They may represent small clusters of dwellings of medieval date, possibly occupied permanently rather than seasonally. Their aspect, south and east facing respectively, means that they are not exposed directly to the prevailing winds. It is notable that both of the platform groups described here have areas of ridge and furrow cultivation close by, although there is no way of knowing if such features are contemporary.

As described in 2.6 above, there is one clear example of a platform pair (NPRNs 289205 & 289206) recorded on Colva Hill. These platforms would appear to belong to a wholly different settlement tradition to the platform groups previously described. Their location on a gentle westward-facing slope on the open common means that they are exposed to the prevailing winds, which may be indicative of seasonal use. Examples of single platforms with no recorded ancillary structure may also belong to a similar tradition e.g. NPRN 289182) and it is possible that such sites are directly related to the medieval *hafod* tradition. However, it is also important to note that the Colva Hill platform pair overlook a flat area of common on which there is clear evidence of ridge & furrow cultivation. Whether these platforms and the cultivation are associated with each other cannot be ascertained.

Two platforms in close proximity were also recorded in the sheltered, east-facing Cwm Einion valley (NPRNs 289325-289326), at the edge of a block of ridge & furrow (NPRN 289338). In this instance it seems likely that there is a direct association between the platforms and the cultivation.

The Cwm Einion platforms would appear to belong to a selection of platforms which would appear directly related to both cultivation and enclosure. Other examples include the Bryntegan platform (NPRN 289166) and Colva Hill Platform V (NPRN 289177), both of which appear to be associated with discrete areas of cultivation, defined by boundary banks. Such sites may well represent early post-medieval encroachments onto what is now common land.

As is often the case, an absence of historical and excavated archaeological evidence makes informed comment on the true nature of such sites difficult.



### *Enclosure and cultivation*

There is considerable evidence of cultivation on the Gwaunceste commons, with ridge and furrow ploughmarks recorded at 22 different locations. Most of these records represent significant areas of cultivation, covering many hundred square metres of common land, the precise extent of which could not be mapped during fieldwork (as shown in Plate 3). It is simply not possible to know when this cultivation occurred, although it is suspected that most of it dates to a time before the first detailed maps were produced for the area in the early part of the 19<sup>th</sup> century. Much of the ridge and furrow is quite broad, often measuring 1.5m from furrow to furrow, indicating that it is not the result of 20<sup>th</sup> century mechanical ploughing.

Likewise, there are many examples of denuded enclosure or field boundary banks on the commons that are indicative of earlier attempts to extend the area of enclosed, and presumably cultivated, land onto the common. The best examples of this were noted above Cwm Twrch, Glascwm (NPRN 289072) and either side of Cwm Griffin, Colva (see Plate 17).

It appears that during the 18<sup>th</sup> or early 19<sup>th</sup> centuries, attempts were made to define the common boundary (see 4.4.1 below). At this time it is possible that some enclosed lands beyond the defined boundary were thereafter allowed to revert to mountain pasture. Boundaries such as those shown in Plate 17 do not appear on 19<sup>th</sup> or 20<sup>th</sup> maps and may therefore considered to be earlier. Tithe and Ordnance Survey maps show that there was further intake around parts of the common edge during the 19<sup>th</sup> century, but most of the lands thereby taken in remain outside the common and study area boundary.



*Plate 17: An old field boundary bank (NPRN 289351) wends its way across the common near Cwm Griffin. On the slope immediately above the improved pasture fields to the left of the photograph, a series of old field enclosures can be seen, defined by parallel banks running downslope.*



*Plate 18: An old field boundary bank (NPRN 289289) now crossing the common near Black Yatt. This bank may be associated with late 18<sup>th</sup> or early 19<sup>th</sup> century activity along the Gilwern Brook valley.*

#### **4.3.3 The significance of deserted settlements**

Although we cannot discuss the date and function of most of the deserted settlements recorded within the study area with any great clarity, we can be certain that they tell us that the commons of the Gwaunceste study area have not always been uninhabited.

The range of settlement site types, and the evidence for cultivation on the commons, also show clearly that both agrarian and pastoral activity has impacted on the hills of the study area.

Therefore the deserted settlements of the Gwaunceste study area can be summarised as being significant for the following reasons;

- making up a significant proportion of the overall archaeological resource
- the presence of a range of site types
- most deserted settlements are in good condition and appear undisturbed by later activity
- The deserted settlement site at Cwm Griffin (NPRN 289212 – see Plate 2) was recorded as a longhouse and may be associated with a nearby enclosure (NPRN 289209) and area of cultivation (NPRN 289213). This site is considered to be of some significance as it has been thought that the longhouse was not a building form used in this part of Wales



## 4.4 Post-Medieval Industries

Although there are no major industries within the Gwaunceste study area, evidence abounds for small scale industrial activities associated with agriculture and land management which have left their mark on the local landscape. These include quarrying, water management and, less obviously, peat or turf cutting.

### 4.4.1 Quarrying

There are no major quarries within the study area, but the Gwaunceste commons are ringed with numerous minor quarry workings that appear to be predominantly, if not exclusively, associated with the provision of walling stone for the construction of the common boundary. Of the 75 quarries recorded during fieldwork, only one of which (Cwm Griffin NPRN 289227) could be described as a relatively large working.

Most of the quarries are simple scoops or pits which have exploited a small outcrop. In many cases it is possible to see that the stone removed from a quarry pit has been used to build or face a section of the common boundary within close proximity. Some of these wall sections survive in good condition, but much of the boundary was not provided with any stone and was left simply as an earthwork boundary bank. A small number of the quarries are located close to farms positioned just outside the common boundary and it may be that the stone was used to construct buildings or trackways by their inhabitants.



*Plate 19: The small quarry (NPRN 289204) in the foreground is the source of stone for the common boundary bank immediately adjacent. This relationship is repeated around much of the Gwaunceste common edge.*

There is no evidence for any structures or infrastructure built in association with the quarries of the study area and it is also not possible to attribute any particular date to them. It does seem probable that most, perhaps all, date to the 18<sup>th</sup> or early 19<sup>th</sup> century. There may have been a period when there was a general effort made to define the common boundary with a permanent and well constructed wall or stone-faced bank. Tithe map evidence suggests that the boundary between the common and farmed land around most of the study area has remained fairly stable since the 1830s, suggesting that this activity may have predated that time.



*Plates 20 (top) and 21 (bottom); One of the largest quarries in the study area is NPRN 289227 in Cwm Griffin. It was the source for stone used to construct several hundred metres of walling (below) to define the common boundary to the east of the quarry and would appear to date to the 19<sup>th</sup> century.*





#### **4.4.2 Peat Cutting**

During fieldwork, no physical evidence of peat or turf cutting was noted. Similarly, there was no clear evidence from AP mapping to suggest that such activity had taken place anywhere within the study area. However, it is suspected that peat has been cut at a number of locations within the study area.

There is no blanket bog on the Gwaunceste hills and relatively few of the local soils can even be described as being “peaty” in nature. However, there are several “mawn” pools within the area. These are small basins which appear to have thick peat deposits within them and remain very wet and peaty even today. The Welsh word “mawn” (peat) has survived in the Radnorshire English dialect and its use may well suggest that these pools were formerly used as turbaries for neighbouring communities. Tithe map evidence demonstrates that the Beili Bedw Mawn Pool was certainly used as a turbary during the mid-19<sup>th</sup> century, whilst the same map also shows one small area close to Llanwentre Pool, at the northwestern edge of the study area set aside for use by local parishioners as a common turbary. This is an area which has been heavily improved in modern times, removing any traces of peat cutting activity. It is not known, therefore, if peat or turf cutting was a more widespread activity before the mid-19<sup>th</sup> century than this limited evidence suggested.



*Plate 22: The Mawn Pool filling a natural basin on Caety Traylow, looking eastwards.*

#### 4.4.3 Water Supply

The Gwaunceste study area has no significant lakes or reservoirs, but water management figures as an important element in the archaeological resource here. Fieldwork during the summer and winter seasons showed that the Gwaunceste hills are characterised by thin soils, sometimes peaty, which have a very poor water retention capacity.

During the hot summer of 2006, the western part of the study area was almost completely dry, with few strong springs or streams. Returning to the area during the wet winter of 2007, it was also noted that rainwater runs off the hills very quickly via seasonal streams and little is retained on the common itself.

To meet the need for supplying a sufficient quantity of drinking water for livestock grazing the commons during the summer months, local farmers have had to respond to these conditions by creating small ponds on the common, which in some respects mimic the relatively few natural pools (including the “mawn” pools”) which are also found in the area. 18 such ponds were recorded, most of which were in the western portion of the study area on the two Little Hills and Gwaunceste Hill. Typically, the man-made pools are less than 20m<sup>2</sup> and less than 1m deep. They have been created by raising a low crescentic bank on the downslope side of a hollow or one of the seasonal or occasional minor stream or drainage channels found on the hills. In some instances it appears that drainage ditches have been cut to allow more water to be captured and fed into the pools during wet periods. It is likely that they are all of later post-medieval or modern date.



*Plate 23: NPRN 289087, one of many man-made ponds found in the study area, created to retain water for sheep and cattle grazing the hill pastures.*

#### 4.4.4 Significance of the Industrial Sites

The industrial sites recorded during fieldwork are all considered to be associated with meeting purely local needs for stone and water. There is no evidence that any of the raw materials available within the area have been taken beyond their immediate neighbourhood in the past. It is therefore concluded that industrial sites in this area should be considered to be of low significance.

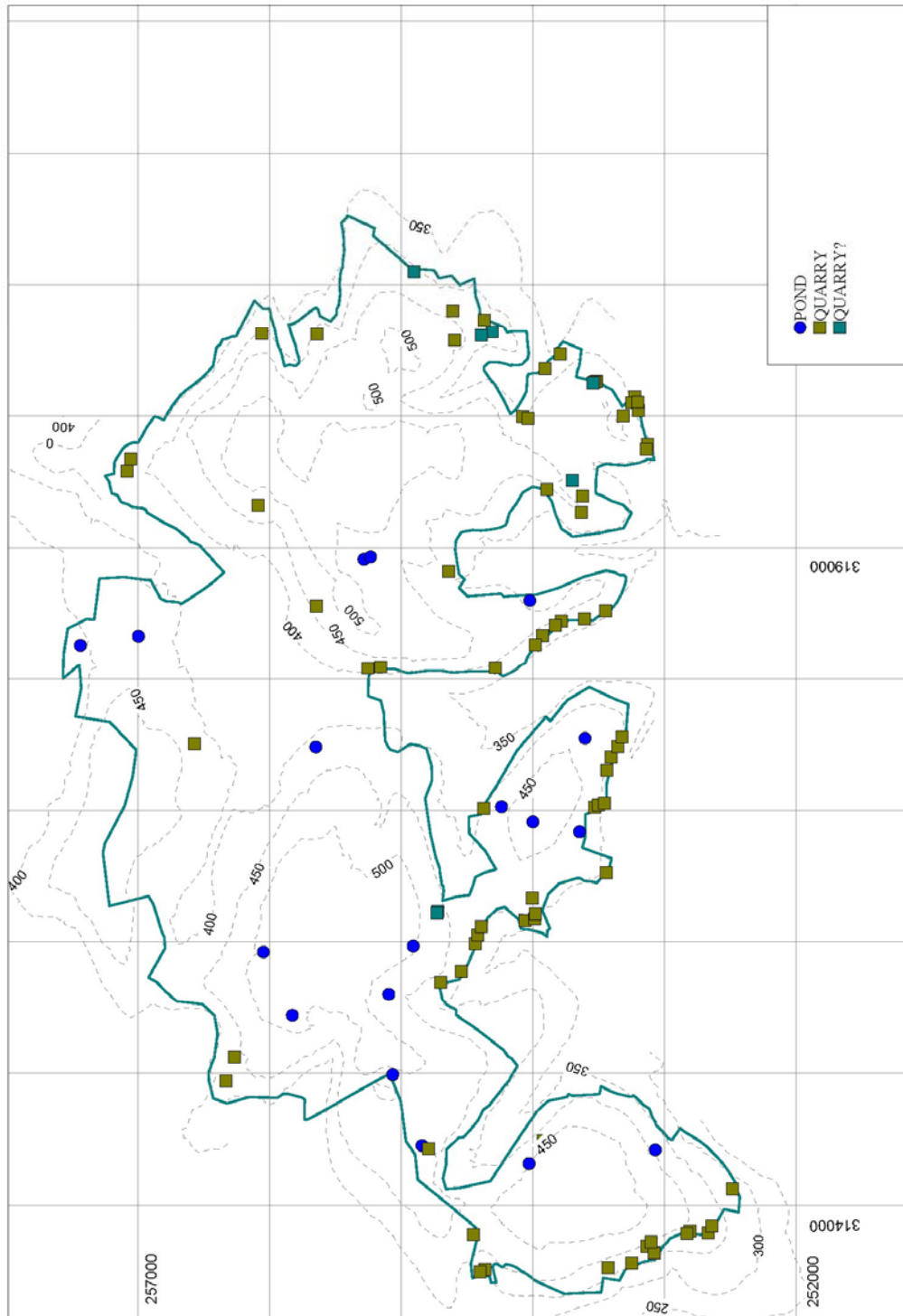


Figure 9: Quarries and water supply sites



## 4.5 Leisure

Like most upland areas of Wales, the hills of the Gwaunceste study area are increasingly used for leisure pursuits such as walking and mountain biking. However there is a long history of using local hills for leisure pursuits, in the form of grouse shooting in particular, reflecting the large red grouse population of the area. 33 disused shooting stands were noted, typically surviving as low sub-circular mounds, often with a narrow depression through the centre. In some examples wooden structures still stood on the mounds, and there were often pieces of decayed wood scattered around, where such structures had long collapsed. There was no evidence that these shooting stands are still in use, or have been used for many years in most cases.



*Plate 24: A disused shooting stand on the southern side of Gwaunceste Hill, near Blaenheath.*



*Plate 25: Modern scramble biking and mountain biking can lead to the erosion of the land surface in many parts of the study area. This is due to the thin and friable soils that are often encountered, as seen here, near Llyn y Waun, Gwaunceste Hill.*

## 5. Conclusions

The archaeology of the Gwaunceste study area conforms in most respects to that of adjacent areas. The range of identifiable archaeological monuments and features includes Bronze Age ritual and funerary monuments, but is most notable for the high number of deserted settlements present and the extent of areas of former cultivation on what is now common land.

The landscape of the study area presents many problems for the archaeological fieldworker, due to the fact that extensive areas of the higher terrain are obscured by thick heather and bilberry vegetation throughout the year, whilst lower slopes are equally affected by dense bracken cover, which dies back to form a thick mat of decaying vegetation during the winter months. These are not ideal conditions for archaeological study, either in the field or through analysis of aerial photographs.

In summary, the key points raised by the survey are;

- Relatively few Bronze Age funerary and ritual monuments are present in the area. These are round barrows, which tend to be found in valley floor or saddle positions, rather than on summits. They belong to a much wider group of Bronze Age funerary and ritual monuments found across neighbouring districts. The project has succeeded in recording several new round barrows, helping provide a much more even distribution of funerary monuments in this area.
- The distribution of deserted settlement sites within the study area tends to be close to the present common edge, which may indicate that many are early post-medieval encroachments onto the common. It is not known how early the origins of any of these settlement sites might be, but some may have been medieval *hafod* sites. The extent of cultivation evidence across the hills of the study area shows that at some time in the past the commons were used to raise crops and therefore the settlement tradition is not purely associated with pastoral farming. Clearly there is a lack of archaeological excavation evidence to help inform an understanding and interpretation of the date and function of the deserted settlement sites of the area.
- Few opportunities for palaeoenvironmental study arise in the area, but pockets of peat mire, known locally as “mawn pools” may offer locations suitable for study. Palaeoenvironmental study may prove particularly valuable in helping to date the cultivation activity apparent across the hills of the study area.
- Other key themes are the presence of locally important quarries, used to help construct boundaries to define the common edge, and also evidence of the popularity of grouse shooting as a leisure pursuit in the 19<sup>th</sup> and 20<sup>th</sup> centuries. The archaeology of the area reflects the exploitation and management of the Gwaunceste hills over many centuries, up to modern times.



## **6. Sources**

### **Published Map Sources**

Ordnance Survey, County Series 1<sup>st</sup> edition, 1890-91, Radnorshire, scale 1:10560

Ordnance Survey, County Series 2<sup>nd</sup> edition 1905, Radnorshire, scale 1:10560

Ordnance Survey, County Series 3<sup>rd</sup> edition 1930-53, Radnorshire, scale 1:10560

### **Unpublished Map Sources**

Tithe map and apportionment for the parish of Glaswcm, 1840 (apportionment 1837).

Tithe map and apportionment for the parish of Colva, 1840 (apportionment 1837).

Tithe map and apportionment for the parish of Gladestry, 1839.

Birmingham Corporation Water Committee per. AE Fordham; Deposit;

1961;199903996. NLW, 1869, Plan of Wastelands in the Manor and Parishes of Gladestry and Colva in the County of Radnor.

Birmingham Corporation Water Committee per. AE Fordham; Deposit;

1961;199902209. NLW, 1869, Disputed boundaries between the parishes of Glascombe and Colva Radnor.

### **Aerial Photographs**

RAF vertical AP 106G/UK 922 - 4205

RAF vertical AP 106G/UK 836 - 4048

RAF vertical AP 106G/UK 836 - 4050

RAF vertical AP CPE/UK 1873 - 6208

Ordnance Survey vertical AP 00 930 - 0544

Ordnance Survey vertical AP 73 092 - 1203

Ordnance Survey vertical AP 73 092 - 1201

Ordnance Survey vertical AP 72 252 - 0451

Ordnance Survey vertical AP 73 092 - 1144

Ordnance Survey vertical AP 00 930 - 0527

Ordnance Survey vertical AP 75 072 – 0157

## Published sources

**Anon**, 1978, "Finds from flint and pottery foray ", *The Transactions of the Radnorshire Society* 48, 13.

**Caseldine, A**, 1990, *Environmental Archaeology in Wales*, 13, 135

**Kay, RE**, 1982, "Observations in Radnorshire 1970-1980, Radnorshire Society Newsletter No. 15, 1982)

**Makepeace, G A**, 2001, "Black Mountains, Early to Mid Bronze-Age Settlements (centred SO 22)", *Archaeology in Wales* 41.

**RCAHM**, 1913, *Inventory of the Ancient Monuments in Wales and Monmouth III - County of Radnor*, 49

**Silvester, RJ**, 2006, "Deserted Rural Settlements in North East and Central Wales" in Roberts, K ed., "*Lost Farmsteads: Deserted Rural Settlements in Wales*" pp.13-39. Cadw.

**Slater, F M & Wilkinson, D M**, 1993, "The Peatlands of Mid-Wales", *Brycheiniog* 26, 20, 22.

**Wilkinson, D M**, 1988, "A preliminary study of the development of Beilbedws Mire in mid Wales", *Quaternary Newsletter* 55, 12-22.

**Unpublished sources**

**Dunn, C J**, 1974, *Radnorshire Barrows East of the River Ithon: a study of form distribution and siting*, 66

**Silvester, RJ**, 1994, *Radnorshire Historic Settlements*, CPAT report 92 March 1994.

**Silvester, RJ**, 1997, *Deserted Medieval and Later Rural Settlements in Radnorshire: field assessment*. CPAT Report 227.

**Silvester, RJ**, 1999, *Deserted Medieval and Later Rural Settlements in Radnorshire: the second report, field assessment*. CPAT Report 305.

**CPAT**, 2001, *Prehistoric Funerary and Ritual Sites: South Radnorshire*. CPAT Report

**CPAT**, 2002, *Lithic Scatters Project*. CPAT Report

**Silvester, R J**, 2002, *Proposed Rhiew Hill Windfarm, Glascwm, Powys: archaeological assessment*, CPAT report 485

**CPAT**, 2003, *Prehistoric Funerary and Ritual Sites, 2002/03: South Radnorshire and Dyfi Valley* CPAT Report

## 7. Recommendations

The following lists highlight those sites which might be suitable for further analysis, palaeoenvironmental analysis and inclusion on future Ordnance Survey maps.

### 7.1 Detailed site analysis and buildings survey

NPRN 289350	Beili Bedw Deserted Rural Settlement
NPRN 289209	Cwm Griffin Enclosure
NPRN 289212	Cwm Griffin Longhouse
NPRN 289080	Gelli Dywyll Platform
NPRN 289081	Gelli Dywyll Platform
NPRN 289362	Gelli Dywyll Platform
NPRN 289364	Gelli Dywyll Platform
NPRN 289365	Gelli Dywyll Platform
NPRN 289367	Gelli Dywyll Platform
NPRN 289104	Gwaunceste Hill Platform
NPRN 289105	Gwaunceste Hill Platform
NPRN 289106	Gwaunceste Hill Platform
NPRN 289108	Gwaunceste Hill Platform
NPRN 289110	Gwaunceste Hill Platform

### 7.2 Sites for pollen analysis and other environmental sampling

There are very few examples of deep peat deposits within the study area. Only a small number of “mawn pools”, pockets of peat which have developed in natural hollows are known. These may contain key evidence relating to the history of cultivation on the commons of the area. The three best examples are found at the following locations;

SO 1630456557	Beili Bedw Mawn Pool
SO 1986055750	Caety Traylow Mawn Pool
SO 1638055016	Blaen-heath Mawn Pool

### **7.3 Sites for inclusion on Ordnance Survey mapping**

NPRN 289207	Little Hill, Mound V
NPRN 289103	Little Hill Round Barrow
NPRN 289205	Colva Hill Platform III
NPRN 289206	Colva Hill Platform IV
NPRN 289141	Cwm Ceste Platform
NPRN 289166	Bryntegan Platform II
NPRN 289326	Cwm Einion Platform I
NPRN 289325	Cwm Einion Platform II
NPRN 289209	Cwm Griffin Enclosure
NPRN 289212	Cwm Griffin Longhouse
NPRN 289080	Gelli Dywyll Platform
NPRN 289081	Gelli Dywyll Platform
NPRN 289362	Gelli Dywyll Platform
NPRN 289364	Gelli Dywyll Platform
NPRN 289365	Gelli Dywyll Platform
NPRN 289367	Gelli Dywyll Platform
NPRN 289104	Gwaunceste Hill Platform
NPRN 289105	Gwaunceste Hill Platform
NPRN 289106	Gwaunceste Hill Platform
NPRN 289108	Gwaunceste Hill Platform
NPRN 289110	Gwaunceste Hill Platform
NPRN 289061	Clas Brook Platform I
NPRN 289064	Clas Brook Platform I
NPRN 289065	Clas Brook Platform I



*Plate 26: The Beili Bedw Mawn Pool*



*Plate 27: NPRN 289325, a platform in the narrow Cwm Einion valley. Note the cultivation ridges (NPRN 289338) below the platform.*

## Appendix A - Site Type Summary

*Site Type                      Number    NPRN    Site Name*

**BANK  
(EARTHWORK)**                      **46**

289019 LITTLE HILL, BANK I  
 289306 BEILI BEDW, BANK  
 289309 GLADESTRY BROOK, BANK IV  
 289313 CEFN HIR, BANK III  
 289314 CEFN HIR, BANK II  
 289315 CEFN HIR, BANK I  
 289343 CWM GRIFFIN, BANK II  
 289368 FFYNNONAU, BANK IV  
 289369 FFYNNONAU, BANK III  
 289036 LLYN Y WAUN, BANK  
 289059 CLAS BROOK, BANK II  
 289062 CLAS BROOK, BANK I  
 289067 CWM TWRCH, BANK III  
 289078 LITTLE HILL, BANK III  
 289089 GLASCWM-IG, BANK  
 289100 LITTLE HILL, BANK II  
 289109 GWAUNCESTE HILL, BANK  
 289126 CAETY TRAYLOW, BANK II  
 289131 CWM Y BONT, BANK  
 289140 CWM CESTE, BANK II  
 289143 CWM CESTE, BANK I  
 289160 GILWERN BROOK, BANK  
 289169 BRYNTEGAN, BANK  
 289179 COLVA HILL, BANK  
 289183 GLADESTRY BROOK, BANK I  
 289184 GLADESTRY BROOK, BANK II  
 289185 GLADESTRY BROOK, BANK III  
 289210 CWM GRIFFIN, BANK IV  
 289211 CWM GRIFFIN, BANK III  
 289216 LLANFIHANGEL HILL, BANK  
 289228 CAETY TRAYLOW, BANK I  
 289229 GLADESTRY HILL, BANK  
 289233 UPPER FFYNNONAU, BANK  
 289240 FFYNNONAU, BANK I  
 289242 FFYNNONAU, BANK II  
 289245 UPPER FFYNNONAU, BANK  
 289258 CWM CESTE, BANK III  
 289264 CWM TWRCH, BANK V  
 289265 CWM TWRCH, BANK I  
 289268 CWM TWRCH, BANK IV  
 289288 BLACK YATT, BANK II  
 289289 BLACK YATT, BANK I

*Site Type                      Number    NPRN    Site Name*  
 289290 BLAEN HEATH, BANK II



		289294 BLAEN HEATH, BANK I
		289298 BLACK YATT, BANK IV
		289300 BLACK YATT, BANK III
<b>BARN</b>	<b>1</b>	289355 BLACK YATT, BARN
<b>BUILDING</b>	<b>2</b>	289014 LITTLE HILL, BUILDING I
		289272 BLACK YATT, BUILDING
<b>BUILDING PLATFORM</b>	<b>3</b>	306129 GELLI DYWYLL, HOUSE PLATFORM III
		306128 GELLI DYWYLL, HOUSE PLATFORM II
		306127 GELLI DYWYLL, HOUSE PLATFORM I
<b>BUILDING?</b>	<b>1</b>	289115 GILWERN BROOK, EARTHWORK III
<b>COTTAGE</b>	<b>1</b>	289339 PANT GLAS, COTTAGE
<b>CULTIVATION RIDGE</b>	<b>22</b>	289012 LITTLE HILL, CULTIVATION RIDGES II
		289028 BLAEN BEDW, RIDGE AND FURROW
		289073 CWM TWRCH, BANK II
		289338 CWM EINION, CULTIVATION RIDGES
		289371 FFYNNONAU, CULTIVATION RIDGES
		289372 COLVA HILL, CULTIVATION RIDGES
		289373 LLYN Y WAUN, CULTIVATION RIDGES
		289374 PANT GLAS, CULTIVATION RIDGES
		289096 LITTLE HILL, CULTIVATION RIDGES I
		289113 GWAUNCESTE HILL, CULTIVATION RIDGES II
		289114 GWAUNCESTE HILL, CULTIVATION RIDGES I
		289127 CAETY TRAYLOW, CULTIVATION RIDGES II
		289128 GILWERN BROOK, CULTIVATION RIDGES
		289130 CAETY TRAYLOW, CULTIVATION RIDGES I
		289135 CWM Y BONT, CULTIVATION RIDGES
		289137 CAETY TRAYLOW, CULTIVATION RIDGES III
		289144 CWM CESTE, CULTIVATION RIDGES
		289173 LLANHAYLOW, CULTIVATION RIDGES
		289199 CWM SHENKIN, CULTIVATION RIDGES II
		289200 CWM SHENKIN, CULTIVATION RIDGES I
		289214 CWM GRIFFIN, CULTIVATION RIDGES II
		289248 BRYNTEGAN, CULTIVATION RIDGES
<b>DAM</b>	<b>1</b>	289261 BEILI BEDW, DAM

<i>Site Type</i>	<i>Number</i>	<i>NPRN</i>	<i>Site Name</i>
<b>DESERTED RURAL 1 SETTLEMENT</b>			
		289350	BEILI BEDW, DESERTED RURAL SETTLEMENT
<b>DITCH</b>	<b>3</b>		
		289046	GWAUNCESTE HILL, DITCH I
		289048	GWAUNCESTE HILL, DITCH II
		289049	GWAUNCESTE HILL, DITCH III
<b>DRAINAGE CHANNEL</b>	<b>2</b>		
		289032	LLYN Y WAUN, GULLY II
		289033	LLYN Y WAUN, GULLY I
<b>DRAINAGE SYSTEM</b>	<b>1</b>		
		289037	LLYN Y WAUN, DRAINAGE SYSTEM
<b>EARTHWORK</b>	<b>7</b>		
		289079	LITTLE HILL, EARTHWORK II
		289215	CWM GRIFFIN, EARTHWORK
		289253	CWM CESTE, EARTHWORK VII
		289254	CWM CESTE, EARTHWORK III
		289255	CWM CESTE, EARTHWORK IV
		289256	CWM CESTE, EARTHWORK V
		289292	BLAEN HEATH, EARTHWORK II
<b>ENCLOSURE</b>	<b>14</b>		
		289001	LITTLE HILL, ENCLOSURE I
		289010	LITTLE HILL, ENCLOSURE II
		289349	BEILI BEDW, ENCLOSURE
		289084	GLASCWM-IG, ENCLOSURE I
		289094	GLASCWM-IG, ENCLOSURE II
		289095	LITTLE HILL, ENCLOSURE III
		289097	LITTLE HILL, ENCLOSURE IV
		289116	GILWERN BROOK, ENCLOSURE
		289196	CWM SHENKIN, ENCLOSURE II
		289198	CWM SHENKIN, ENCLOSURE I
		289209	CWM GRIFFIN, ENCLOSURE II
		289235	CWM GRIFFIN, ENCLOSURE I
		289241	FFYNNONAU, ENCLOSURE
		289286	BLACK YATT, ENCLOSURE
<b>ENCLOSURE?; BUILDING?</b>	<b>1</b>		
		289117	GILWERN BROOK, EARTHWORK II
<b>FARMHOUSE</b>	<b>2</b>		
		289021	UPPER YSGAWEN, FARMHOUSE
		289274	BLACK YATT, FARMHOUSE
<b>FARMSTEAD?</b>	<b>1</b>		
		289005	UPPER YSGAWEN, FARMSTEAD

<i>Site Type</i>	<i>Number</i>	<i>NPRN</i>	<i>Site Name</i>
<b>FIELD</b>	<b>1</b>		289175 COLVA HILL, FIELD
<b>FIELD SYSTEM</b>	<b>4</b>		289340 PANT GLAS, FIELD SYSTEM 289370 FFYNNONAU, FIELD SYSTEM 289072 CWM TWRCH, FIELD SYSTEM 289287 BLACK YATT, FIELD SYSTEM
<b>FINDSPOT</b>	<b>1</b>		289050 GWAUNCESTE HILL, FINDSPOT
<b>HOLLOW</b>	<b>1</b>		289107 GWAUNCESTE HILL, EARTHWORK
<b>LAZY BEDS?</b>	<b>1</b>		289213 CWM GRIFFIN, CULTIVATION RIDGES I
<b>LEAT</b>	<b>1</b>		289275 BLACK YATT, LEAT
<b>LEAT?</b>	<b>1</b>		289238 CWM GRIFFIN, LEAT
<b>LONG HUT</b>	<b>5</b>		289303 BEILI BEDW, LONG HUT I 289051 GWAUNCESTE HILL, LONG HUT 289231 GLADESTRY HILL, LONG HUT 289263 BEILI BEDW, LONG HUT II 289293 BLAEN HEATH, LONG HUT
<b>LONGHOUSE</b>	<b>1</b>		289212 CWM GRIFFIN, LONGHOUSE
<b>MOUND</b>	<b>12</b>		289011 LITTLE HILL, MOUND I 289016 LITTLE HILL, MOUND II 289361 BLAEN BEDW, MOUND I 289075 LITTLE HILL, MOUND III 289120 GWAUNCESTE HILL, MOUND 289168 BRYNTEGAN, MOUND II 289226 CAETY TRAYLOW, MOUND 289232 CWM CESTE, MOUND IV 289249 CWM CESTE, MOUND I 289250 CWM CESTE, MOUND V 289251 CWM CESTE, MOUND III 289252 CWM CESTE, MOUND II
<b>MOUND?</b>	<b>1</b>		289055 LITTLE HILL, MOUND IV
<b>OUTBUILDING</b>	<b>1</b>		289273 BLACK YATT, OUTBUILDING
<b>PIT</b>	<b>1</b>		289138 CWM CESTE, PIT
<b>PLANTATION</b>	<b>4</b>		289356 BLACK YATT, PLANTATION I 289357 BLACK YATT, PLANTATION II 289359 BEILI BEDW, PLANTATION II 289360 BEILI BEDW, PLANTATION I

<i>Site Type</i>	<i>Number</i>	<i>NPRN</i>	<i>Site Name</i>
<b>PLATFORM</b>	<b>33</b>		289323 CAETY TRAYLOW, PLATFORM I 289324 CAETY TRAYLOW, PLATFORM II 289325 CWM EINION, PLATFORM II 289326 CWM EINION, PLATFORM I 289344 CWM GRIFFIN, PLATFORM II 289345 CWM GRIFFIN, PLATFORM III 289362 GELLIDYWYLL, PLATFORM III 289363 GELLIDYWYLL, PLATFORM II 289364 GELLIDYWYLL, PLATFORM I 289365 GELLIDYWYLL, PLATFORM IV 289367 GELLIDYWYLL, PLATFORM V 289061 CLAS BROOK, PLATFORM I 289064 CLAS BROOK, PLATFORM II 289065 CLAS BROOK, PLATFORM III 289080 GELLIDYWYLL, PLATFORM VI 289081 GELLIDYWYLL, PLATFORM VII 289104 GWAUNCESTE HILL, PLATFORM I 289105 GWAUNCESTE HILL, PLATFORM II 289106 GWAUNCESTE HILL, PLATFORM III 289108 GWAUNCESTE HILL, PLATFORM V 289110 GWAUNCESTE HILL, PLATFORM IV 289141 CWM CESTE, PLATFORM 289166 BRYNTEGAN, PLATFORM II 289167 BRYNTEGAN, PLATFORM I 289177 COLVA HILL, PLATFORM V 289178 COLVA HILL, PLATFORM IV 289180 COLVA HILL, PLATFORM II 289182 COLVA HILL, PLATFORM VII 289194 CWM SHENKIN, PLATFORM 289205 COLVA HILL, PLATFORM III 289206 COLVA HILL, PLATFORM VI 289234 UPPER FFYNNONAU, PLATFORM 289239 CWM GRIFFIN, PLATFORM I
<b>PLATFORM?</b>	<b>8</b>		289018 LITTLE HILL, PLATFORM I 289039 GWAUNCESTE HILL, PLATFORM VI 289054 LITTLE HILL, EARTHWORK I  289123 GILWERN BROOK, EARTHWORK I 289139 CWM CESTE, EARTHWORK I 289208 COLVA, PLATFORM 289246 COLVA HILL, PLATFORM I 289257 CWM CESTE, EARTHWORK VI
<b>POND</b>	<b>18</b>		289031 LLYN Y WAUN, POND II 289035 LLYN Y WAUN, POND I 289052 GWAUNCESTE HILL, POND III 289058 GWAUNCESTE HILL, POND II

<i>Site Type</i>	<i>Number</i>	<i>NPRN Site Name</i>
		289060 CLAS BROOK, POND
		289074 LITTLE HILL, POND II
		289077 CWM TWRCH, POND
		289082 LITTLE HILL, POND III
		289087 LITTLE HILL, POND IV
		289091 CWM CRAWNLLWYN, POND
		289102 LITTLE HILL, POND I
		289118 GWAUNCESTE HILL, POND I
		289149 CWNC BANK, POND
		289243 LLANFIHANGEL HILL, POND I
		289244 LLANFIHANGEL HILL, POND II
		289270 LITTLE HILL, POND V
		289271 BLACK YATT, POND
		289278 FOICE, POND
<b>POTATO CLAMP?</b>	<b>1</b>	
		289165 BRYNTEGAN, MOUND I
<b>QUARRY</b>	<b>71</b>	
		289000 LITTLE HILL, QUARRY I
		289002 LITTLE HILL, QUARRY II
		289003 UPPER YSGAWEN, QUARRY IV
		289004 UPPER YSGAWEN, QUARRY I
		289013 LITTLE HILL, QUARRY III
		289015 LITTLE HILL, QUARRY IV
		289017 LITTLE HILL, QUARRY V
		289020 UPPER YSGAWEN, QUARRY II
		289022 UPPER YSGAWEN, QUARRY III
		289023 LITTLE HILL, QUARRY VI
		289024 TY'N-Y-COED, QUARRY I
		289025 TY'N-Y-COED, QUARRY III
		289310 CARREG GWYN, QUARRY I
		289311 CARREG GWYN, QUARRY II
		289322 CAETY TRAYLOW, QUARRY I
		289329 LLANHAYLOW, QUARRY I
		289330 CARREG GWYN, QUARRY III
		289341 MOUNTAIN HALL, QUARRY I
		289342 MOUNTAIN HALL, QUARRY II
		289353 CAETY TRAYLOW, QUARRY II
		289354 TY'N-Y-COED, QUARRY II
		289358 CEFN HIR, QUARRY
		289034 LLYN Y WAUN, QUARRY
		289053 WERN, QUARRY
		289066 CWM TWRCH, QUARRY II
		289068 CWM TWRCH, QUARRY I
		289069 UPPER CWM-TWRCH, QUARRY III
		289070 UPPER CWM-TWRCH, QUARRY II
		289071 UPPER CWM-TWRCH, QUARRY I
		289076 LITTLE HILL, QUARRY IX
		289083 LITTLE HILL, QUARRY VIII



289085 GLASCWM-IG, QUARRY V  
 289086 GLASCWM-IG, QUARRY IV  
 289088 GLASCWM-IG, QUARRY II  
 289090 GLASCWM-IG, QUARRY I  
 289092 GLASCWM-IG, QUARRY III  
 289093 GLASCWM-IG, QUARRY VI  
 289101 LITTLE HILL, QUARRY VII  
 289132 CWM Y BONT, QUARRY I  
 289133 CWM Y BONT, QUARRY II  
 289145 LLANFIHANGEL HILL, QUARRY  
 289151 CNWCH, QUARRY V  
 289152 CNWCH, QUARRY IV  
 289153 CNWCH, QUARRY III  
 289154 CNWCH, QUARRY II  
 289155 CNWCH, QUARRY I  
 289156 CWM CESTE, QUARRY II  
 289157 CWM CESTE, QUARRY IV  
 289158 CWM CESTE, QUARRY III  
 289159 CWM CESTE, QUARRY I  
 289162 BRYNTEGAN, QUARRY II  
 289164 BRYNTEGAN, QUARRY III  
 289170 BRYNTEGAN, QUARRY IV  
 289171 BRYNTEGAN, QUARRY V  
 289174 LLANHAYLOW, QUARRY II  
 289176 COLVA HILL, QUARRY II  
 289181 COLVA HILL, QUARRY I  
 289191 COLVA, QUARRY IV  
 289192 COLVA, QUARRY I  
 289193 COLVA FARM, QUARRY  
 289197 CWM SHENKIN, QUARRY  
 289201 COLVA, QUARRY II  
 289203 FFYNNONAU, QUARRY  
 289204 UPPER YSGAWEN, QUARRY V  
 289207 COLVA, QUARRY III  
 289227 CWM GRIFFIN, QUARRY  
 289260 BEILI BEDW, QUARRY  
 289266 CWM TWRCH, QUARRY VI  
 289267 CWM TWRCH, QUARRY V  
 289276 CWM TWRCH, QUARRY IV  
 289277 CWM TWRCH, QUARRY III

**QUARRY?**

**4**

289333 CARREG GWYN, QUARRY IV  
 289056 BLAEN HEATH, QUARRY  
 289057 BLAEN HEATH, EARTHWORK I  
 289172 BRYNTEGAN, QUARRY I

**QUARRY?;PLATFORM?**

**3**

289312 CEFN HIR, EARTHWORK  
 289332 CARREG GWYN, EARTHWORK  
 289195 CWM SHENKIN, EARTHWORK

<i>Site Type</i>	<i>Number</i>	<i>NPRN</i>	<i>Site Name</i>
<b>ROUND BARROW</b>	<b>6</b>		306091 CWMCESTE, BARROW 308023 GILWERN BROOK, BARROW II 308021 GILWERN BROOK, BARROW I  306098 LLANFIHANGEL HILL, BARROW 24594 GIANTS GRAVE, BARROW 289103 LITTLE HILL, ROUND BARROW
<b>ROUND BARROW?</b>	<b>7</b>		289027 LITTLE HILL, MOUND V 289030 BLAEN BEDW, MOUND II 289308 CWM TWRCH, MOUND II 289147 LLANFIHANGEL HILL, MOUND I 289148 LLANFIHANGEL HILL, MOUND II 289217 LLANFIHANGEL HILL, MOUND III 289269 CWM TWRCH, MOUND I
<b>SCOOP</b>	<b>1</b>		289124 GILWERN BROOK, EARTHWORK IV
<b>SHEEP FOLD</b>	<b>2</b>		289008 LITTLE HILL, SHEEP FOLD II 289247 COLVA HILL, SHEEP FOLD
<b>SHEEP FOLD?</b>	<b>2</b>		289009 LITTLE HILL, SHEEP FOLD I 289122 GILWERN BROOK, SHEEP FOLD
<b>SHELTER</b>	<b>1</b>		289111 GWAUNCESTE HILL, SHELTER
<b>SHELTER?</b>	<b>2</b>		289063 CLAS BROOK, SHELTER 289142 CWM CESTE, EARTHWORK II
<b>SHELTER?; PLATFORM?</b>	<b>1</b>		289366 GELLIDYWYLL, EARTHWORK
<b>SHOOTING STAND</b>	<b>33</b>		289301 COLVA HILL, SHOOTING STAND XI 289302 COLVA HILL, SHOOTING STAND IX 289316 CEFN HIR, SHOOTING STAND III 289317 CAETY TRAYLOW, SHOOTING STAND XI 289318 CAETY TRAYLOW, SHOOTING STAND XII 289319 CAETY TRAYLOW, SHOOTING STAND XIII 289320 CAETY TRAYLOW, SHOOTING STAND X 289321 CAETY TRAYLOW, SHOOTING STAND VIII 289328 COLVA HILL, SHOOTING STAND V 289331 CEFN HIR, SHOOTING STAND IV 289327 CAETY TRAYLOW, SHOOTING STAND II 289334 CEFN HIR, SHOOTING STAND VI 289335 CEFN HIR, SHOOTING STAND II 289336 CEFN HIR, SHOOTING STAND I 289337 CEFN HIR, SHOOTING STAND V

<i>Site Type</i>	<i>Number</i>	<i>NPRN Site Name</i>
		289187 COLVA HILL, SHOOTING STAND I
		289188 COLVA HILL, SHOOTING STAND II
		289189 COLVA HILL, SHOOTING STAND III
		289190 COLVA HILL, SHOOTING STAND IV
		289218 CAETY TRAYLOW, SHOOTING STAND III
		289219 CAETY TRAYLOW, SHOOTING STAND IV
		289220 CAETY TRAYLOW, SHOOTING STAND V
		289221 CAETY TRAYLOW, SHOOTING STAND VI
		289222 CAETY TRAYLOW, SHOOTING STAND VII
		289223 CAETY TRAYLOW, SHOOTING STAND XIV
		289224 CAETY TRAYLOW, SHOOTING STAND IX
		289225 CAETY TRAYLOW, SHOOTING STAND I
		289279 COLVA HILL, SHOOTING STAND X
		289280 COLVA HILL, SHOOTING STAND VIII
		289281 COLVA HILL, SHOOTING STAND VII
		289282 COLVA HILL, SHOOTING STAND VI
		289283 COLVA HILL, SHOOTING STAND XII
		289295 BLAEN HEATH, SHOOTING STAND
<b>SHOOTING STAND?</b>	<b>1</b>	
		289186 COLVA HILL, STONE PILE
<b>SPOIL TIP</b>	<b>1</b>	
		289150 CNWCH, SPOIL TIP
<b>SPRING</b>	<b>1</b>	
		32528 GELLIDYWYLL FARM, SPRING
<b>STONE</b>	<b>1</b>	
		289296 BEILI BEDW, STONE
<b>STONE PILE</b>	<b>1</b>	
		289236 CWM GRIFFIN, STONE PILE
<b>STONE SPREAD</b>	<b>1</b>	
		289202 CWM SHENKIN, STONE SCATTER
<b>STRUCTURE</b>	<b>1</b>	
		289262 BEILI BEDW, STRUCTURE
<b>TERRACED GROUND</b>	<b>2</b>	
		289291 BLAEN HEATH, TERRACE
		289297 BEILI BEDW, TERRACE
<b>TRACKWAY</b>	<b>24</b>	
		40304 LLANHAYLOW, LINEAR EARTHWORK
		289026 TY'N-Y-COED, TRACKWAY
		289029 BLAEN BEDW, TRACKWAY
		289304 BEILI BEDW, TRACKWAY I
		289307 CARREG GWYN, TRACKWAY II
		289346 BLAEN ROTHROW, TRACKWAY I
		289347 BLAEN ROTHROW, TRACKWAY II
		289348 COLVA HILL, TRACKWAY II
		289352 COLVA HILL, TRACKWAY I
		289045 GWAUNCESTE HILL, TRACKWAY II

<i>Site Type</i>	<i>Number</i>	<i>NPRN</i>	<i>Site Name</i>
		289047	GWAUNCESTE HILL, TRACKWAY III
		289098	LITTLE HILL, TRACKWAY I
		289099	LITTLE HILL, TRACKWAY II
		289112	GWAUNCESTE HILL, TRACKWAY I
		289121	GWAUNCESTE HILL, TRACKWAY IV
		289125	GILWERN BROOK, TRACKWAY II
		289134	CWM Y BONT, TRACKWAY
		289136	CAETY TRAYLOW, TRACKWAY
		289146	LLANFIHANGEL HILL, TRACKWAY
		289161	GILWERN BROOK, TRACKWAY I
		289163	BRYNTEGAN, TRACKWAY
		289259	CWM CESTE, TRACKWAY
		289284	CEFN HIR, TRACKWAY
		289285	CARREG GWYN, TRACKWAY I
<b>TRACKWAY?</b>	<b>2</b>		
		289305	BEILI BEDW, TRACKWAY II
		289129	CAETY TRAYLOW, LINEAR EARTHWORK
<b>TRIANGULATION POINT</b>	<b>1</b>		
		289038	GWAUNCESTE HILL, TRIANGULATION POINT
<b>WATER CHANNEL</b>	<b>6</b>		
		289040	GWAUNCESTE HILL, GULLY I
		289041	GWAUNCESTE HILL, GULLY II
		289042	GWAUNCESTE HILL, GULLY III
		289043	GWAUNCESTE HILL, GULLY IV
		289044	GWAUNCESTE HILL, GULLY V
		289119	GWAUNCESTE HILL, WATERCOURSE
<b>WELL</b>	<b>1</b>		
		289007	TY'N-Y-COED, WELL

## Appendix B - Period Summary

<b>Bronze Age</b>	<b>6</b>	306091 CWMCESTE, BARROW 308023 GILWERN BROOK, BARROW II 308021 GILWERN BROOK, BARROW I 306098 LLANFIHANGEL HILL, BARROW 24594 GIANTS GRAVE, BARROW 289103 LITTLE HILL, ROUND BARROW
<b>Bronze Age?</b>	<b>7</b>	289027 LITTLE HILL, MOUND V 289030 BLAEN BEDW, MOUND II 289308 CWM TWRCH, MOUND II 289147 LLANFIHANGEL HILL, MOUND I 289148 LLANFIHANGEL HILL, MOUND II 289217 LLANFIHANGEL HILL, MOUND III 289269 CWM TWRCH, MOUND I
<b>Medieval?</b>	<b>3</b>	306129 GELLI DYWYLLI, HOUSE PLATFORM III 306128 GELLI DYWYLLI, HOUSE PLATFORM II 306127 GELLI DYWYLLI, HOUSE PLATFORM I
<b>Medieval?;Post Medieval?</b>	<b>5</b>	289345 CWM GRIFFIN, PLATFORM III 289209 CWM GRIFFIN, ENCLOSURE II 289210 CWM GRIFFIN, BANK IV 289211 CWM GRIFFIN, BANK III 289212 CWM GRIFFIN, LONGHOUSE
<b>Post Medieval</b>	<b>90</b>	289000 LITTLE HILL, QUARRY I 289001 LITTLE HILL, ENCLOSURE I 289002 LITTLE HILL, QUARRY II 289003 UPPER YSGAWEN, QUARRY IV 289004 UPPER YSGAWEN, QUARRY I 289007 TY'N-Y-COED, WELL 289008 LITTLE HILL, SHEEP FOLD II 289015 LITTLE HILL, QUARRY IV 289303 BEILI BEDW, LONG HUT I 289305 BEILI BEDW, TRACKWAY II 289306 BEILI BEDW, BANK 289307 CARREG GWYN, TRACKWAY II 289330 CARREG GWYN, QUARRY III 289338 CWM EINION, CULTIVATION RIDGES 289339 PANT GLAS, COTTAGE 289340 PANT GLAS, FIELD SYSTEM 289341 MOUNTAIN HALL, QUARRY I 289342 MOUNTAIN HALL, QUARRY II 289343 CWM GRIFFIN, BANK II 289344 CWM GRIFFIN, PLATFORM II 289346 BLAEN ROTHROW, TRACKWAY I 289347 BLAEN ROTHROW, TRACKWAY II 289348 COLVA HILL, TRACKWAY II 289349 BEILI BEDW, ENCLOSURE 289350 BEILI BEDW, DESERTED RURAL SETTLEMENT 289352 COLVA HILL, TRACKWAY I 289353 CAETY TRAYLOW, QUARRY II 289354 TY'N-Y-COED, QUARRY II



289355	BLACK YATT, BARN
289356	BLACK YATT, PLANTATION I
289357	BLACK YATT, PLANTATION II
289358	CEFN HIR, QUARRY
289359	BEILI BEDW, PLANTATION II
289360	BEILI BEDW, PLANTATION I
289362	GELLIDYWYLL, PLATFORM III
289363	GELLIDYWYLL, PLATFORM II
289364	GELLIDYWYLL, PLATFORM I
289365	GELLIDYWYLL, PLATFORM IV
289366	GELLIDYWYLL, EARTHWORK
289367	GELLIDYWYLL, PLATFORM V
289371	FFYNNONAU, CULTIVATION RIDGES
289051	GWAUNCESTE HILL, LONG HUT
289075	LITTLE HILL, MOUND III
289080	GELLIDYWYLL, PLATFORM VI
289081	GELLIDYWYLL, PLATFORM VII
289104	GWAUNCESTE HILL, PLATFORM I
289105	GWAUNCESTE HILL, PLATFORM II
289106	GWAUNCESTE HILL, PLATFORM III
289108	GWAUNCESTE HILL, PLATFORM V
289113	GWAUNCESTE HILL, CULTIVATION RIDGES II
289114	GWAUNCESTE HILL, CULTIVATION RIDGES
289115	GILWERN BROOK, EARTHWORK III
289130	CAETY TRAYLOW, CULTIVATION RIDGES I
289134	CWM Y BONT, TRACKWAY
289137	CAETY TRAYLOW, CULTIVATION RIDGES III
289142	CWM CESTE, EARTHWORK II
289144	CWM CESTE, CULTIVATION RIDGES
289145	LLANFIHANGEL HILL, QUARRY
289146	LLANFIHANGEL HILL, TRACKWAY
289149	CWNC BANK, POND
289152	CNWCH, QUARRY IV
289153	CNWCH, QUARRY III
289157	CWM CESTE, QUARRY IV
289158	CWM CESTE, QUARRY III
289159	CWM CESTE, QUARRY I
289162	BRYNTEGAN, QUARRY II
289163	BRYNTEGAN, TRACKWAY
289164	BRYNTEGAN, QUARRY III
289165	BRYNTEGAN, MOUND I
289174	LLANHAYLOW, QUARRY II
289175	COLVA HILL, FIELD
289181	COLVA HILL, QUARRY I
289193	COLVA FARM, QUARRY
289194	CWM SHENKIN, PLATFORM
289196	CWM SHENKIN, ENCLOSURE II
289204	UPPER YSGAWEN, QUARRY V
289227	CWM GRIFFIN, QUARRY
289235	CWM GRIFFIN, ENCLOSURE I
289241	FFYNNONAU, ENCLOSURE
289242	FFYNNONAU, BANK II
289273	BLACK YATT, OUTBUILDING
289274	BLACK YATT, FARMHOUSE
289275	BLACK YATT, LEAT
289276	CWM TWRCH, QUARRY IV
289277	CWM TWRCH, QUARRY III
289284	CEFN HIR, TRACKWAY
289285	CARREG GWYN, TRACKWAY I

## Post Medieval?

148

289286	BLACK YATT, ENCLOSURE
289287	BLACK YATT, FIELD SYSTEM
289289	BLACK YATT, BANK I
40304	LLANHAYLOW, LINEAR EARTHWORK
289005	UPPER YSGAWEN, FARMSTEAD
289009	LITTLE HILL, SHEEP FOLD I
289010	LITTLE HILL, ENCLOSURE II
289013	LITTLE HILL, QUARRY III
289014	LITTLE HILL, BUILDING I
289017	LITTLE HILL, QUARRY V
289019	LITTLE HILL, BANK I
289020	UPPER YSGAWEN, QUARRY II
289021	UPPER YSGAWEN, FARMHOUSE
289022	UPPER YSGAWEN, QUARRY III
289023	LITTLE HILL, QUARRY VI
289024	TY'N-Y-COED, QUARRY I
289025	TY'N-Y-COED, QUARRY III
289026	TY'N-Y-COED, TRACKWAY
289029	BLAEN BEDW, TRACKWAY
289304	BEILI BEDW, TRACKWAY I
289309	GLADESTRY BROOK, BANK IV
289310	CARREG GWYN, QUARRY I
289311	CARREG GWYN, QUARRY II
289312	CEFN HIR, EARTHWORK
289313	CEFN HIR, BANK III
289314	CEFN HIR, BANK II
289315	CEFN HIR, BANK I
289322	CAETY TRAYLOW, QUARRY I
289323	CAETY TRAYLOW, PLATFORM I
289324	CAETY TRAYLOW, PLATFORM II
289325	CWM EINION, PLATFORM II
289326	CWM EINION, PLATFORM I
289332	CARREG GWYN, EARTHWORK
289329	LLANHAYLOW, QUARRY I
289333	CARREG GWYN, QUARRY IV
289368	FFYNNONAU, BANK IV
289369	FFYNNONAU, BANK III
289370	FFYNNONAU, FIELD SYSTEM
289372	COLVA HILL, CULTIVATION RIDGES
289373	LLYN Y WAUN, CULTIVATION RIDGES
289374	PANT GLAS, CULTIVATION RIDGES
289059	CLAS BROOK, BANK II
289061	CLAS BROOK, PLATFORM I
289062	CLAS BROOK, BANK I
289063	CLAS BROOK, SHELTER
289064	CLAS BROOK, PLATFORM II
289065	CLAS BROOK, PLATFORM III
289067	CWM TWRCH, BANK III
289072	CWM TWRCH, FIELD SYSTEM
289073	CWM TWRCH, CULTIVATION RIDGE
289076	LITTLE HILL, QUARRY IX
289079	LITTLE HILL, EARTHWORK II
289090	GLASCWM-IG, QUARRY I
289095	LITTLE HILL, ENCLOSURE III
289097	LITTLE HILL, ENCLOSURE IV
289098	LITTLE HILL, TRACKWAY I
289099	LITTLE HILL, TRACKWAY II
289100	LITTLE HILL, BANK II
289109	GWAUNCESTE HILL, BANK

289110	GWAUNCESTE HILL, PLATFORM IV
289111	GWAUNCESTE HILL, SHELTER
289112	GWAUNCESTE HILL, TRACKWAY I
289116	GILWERN BROOK, ENCLOSURE
289117	GILWERN BROOK, EARTHWORK II
289119	GWAUNCESTE HILL, WATERCOURSE
289121	GWAUNCESTE HILL, TRACKWAY IV
289122	GILWERN BROOK, SHEEP FOLD
289125	GILWERN BROOK, TRACKWAY II
289126	CAETY TRAYLOW, BANK II
289127	CAETY TRAYLOW, CULTIVATION RIDGES II
289128	GILWERN BROOK, CULTIVATION RIDGES
289129	CAETY TRAYLOW, LINEAR EARTHWORK
289131	CWM Y BONT, BANK
289132	CWM Y BONT, QUARRY I
289133	CWM Y BONT, QUARRY II
289135	CWM Y BONT, CULTIVATION RIDGES
289136	CAETY TRAYLOW, TRACKWAY
289139	CWM CESTE, EARTHWORK I
289140	CWM CESTE, BANK II
289141	CWM CESTE, PLATFORM
289143	CWM CESTE, BANK I
289155	CNWCH, QUARRY I
289160	GILWERN BROOK, BANK
289161	GILWERN BROOK, TRACKWAY I
289166	BRYNTEGAN, PLATFORM II
289167	BRYNTEGAN, PLATFORM I
289169	BRYNTEGAN, BANK
289170	BRYNTEGAN, QUARRY IV
289171	BRYNTEGAN, QUARRY V
289172	BRYNTEGAN, QUARRY I
289173	LLANHAYLOW, CULTIVATION RIDGES
289176	COLVA HILL, QUARRY II
289177	COLVA HILL, PLATFORM V
289178	COLVA HILL, PLATFORM IV
289179	COLVA HILL, BANK
289180	COLVA HILL, PLATFORM II
289182	COLVA HILL, PLATFORM VII
289183	GLADESTRY BROOK, BANK I
289184	GLADESTRY BROOK, BANK II
289185	GLADESTRY BROOK, BANK III
289191	COLVA, QUARRY IV
289192	COLVA, QUARRY I
289195	CWM SHENKIN, EARTHWORK
289197	CWM SHENKIN, QUARRY
289198	CWM SHENKIN, ENCLOSURE I
289199	CWM SHENKIN, CULTIVATION RIDGES II
289200	CWM SHENKIN, CULTIVATION RIDGES I
289201	COLVA, QUARRY II
289203	FFYNNONAU, QUARRY
289205	COLVA HILL, PLATFORM III
289206	COLVA HILL, PLATFORM VI
289207	COLVA, QUARRY III
289208	COLVA, PLATFORM
289213	CWM GRIFFIN, CULTIVATION RIDGES I
289214	CWM GRIFFIN, CULTIVATION RIDGES II
289216	LLANFIHANGEL HILL, BANK
289228	CAETY TRAYLOW, BANK I
289229	GLADESTRY HILL, BANK
289231	GLADESTRY HILL, LONG HUT

289233 UPPER FFYNNONAU, BANK  
 289234 UPPER FFYNNONAU, PLATFORM  
 289236 CWM GRIFFIN, STONE PILE  
 289238 CWM GRIFFIN, LEAT  
 289240 FFYNNONAU, BANK I  
 289245 UPPER FFYNNONAU, BANK  
 289246 COLVA HILL, PLATFORM I  
 289248 BRYNTEGAN, CULTIVATION RIDGES  
 289253 CWM CESTE, EARTHWORK VII  
 289254 CWM CESTE, EARTHWORK III  
 289255 CWM CESTE, EARTHWORK IV  
 289256 CWM CESTE, EARTHWORK V  
 289257 CWM CESTE, EARTHWORK VI  
 289258 CWM CESTE, BANK III  
 289259 CWM CESTE, TRACKWAY  
 289260 BEILI BEDW, QUARRY  
 289261 BEILI BEDW, DAM  
 289262 BEILI BEDW, STRUCTURE  
 289263 BEILI BEDW, LONG HUT II  
 289264 CWM TWRCH, BANK V  
 289265 CWM TWRCH, BANK I  
 289266 CWM TWRCH, QUARRY VI  
 289267 CWM TWRCH, QUARRY V  
 289268 CWM TWRCH, BANK IV  
 289272 BLACK YATT, BUILDING  
 289288 BLACK YATT, BANK II  
 289290 BLAEN HEATH, BANK II  
 289291 BLAEN HEATH, TERRACE  
 289293 BLAEN HEATH, LONG HUT  
 289294 BLAEN HEATH, BANK I  
 289298 BLACK YATT, BANK IV  
 289300 BLACK YATT, BANK III

**Post** 32  
**Medieval?;Modern**

289028 BLAEN BEDW, RIDGE AND FURROW  
 289031 LLYN Y WAUN, POND II  
 289032 LLYN Y WAUN, GULLY II  
 289033 LLYN Y WAUN, GULLY I  
 289034 LLYN Y WAUN, QUARRY  
 289035 LLYN Y WAUN, POND I  
 289036 LLYN Y WAUN, BANK  
 289037 LLYN Y WAUN, DRAINAGE SYSTEM  
 289066 CWM TWRCH, QUARRY II  
 289068 CWM TWRCH, QUARRY I  
 289069 UPPER CWM-TWRCH, QUARRY III  
 289070 UPPER CWM-TWRCH, QUARRY II  
 289071 UPPER CWM-TWRCH, QUARRY I  
 289082 LITTLE HILL, POND III  
 289083 LITTLE HILL, QUARRY VIII  
 289084 GLASCWM-IG, ENCLOSURE I  
 289085 GLASCWM-IG, QUARRY V  
 289086 GLASCWM-IG, QUARRY IV  
 289088 GLASCWM-IG, QUARRY II  
 289089 GLASCWM-IG, BANK  
 289092 GLASCWM-IG, QUARRY III  
 289093 GLASCWM-IG, QUARRY VI  
 289094 GLASCWM-IG, ENCLOSURE II  
 289096 LITTLE HILL, CULTIVATION RIDGES I  
 289101 LITTLE HILL, QUARRY VII  
 289151 CNWCH, QUARRY V

		289154	CNWCH, QUARRY II
		289156	CWM CESTE, QUARRY II
		289202	CWM SHENKIN, STONE SCATTER
		289244	LLANFIHANGEL HILL, POND II
		289270	LITTLE HILL, POND V
		289271	BLACK YATT, POND
<b>Modern</b>	<b>44</b>		
		32528	GELLIDYWYLL FARM, SPRING
		289301	COLVA HILL, SHOOTING STAND XI
		289302	COLVA HILL, SHOOTING STAND IX
		289316	CEFN HIR, SHOOTING STAND III
		289317	CAETY TRAYLOW, SHOOTING STAND XI
		289318	CAETY TRAYLOW, SHOOTING STAND XII
		289319	CAETY TRAYLOW, SHOOTING STAND XIII
		289320	CAETY TRAYLOW, SHOOTING STAND X
		289321	CAETY TRAYLOW, SHOOTING STAND VIII
		289328	COLVA HILL, SHOOTING STAND V
		289331	CEFN HIR, SHOOTING STAND IV
		289327	CAETY TRAYLOW, SHOOTING STAND II
		289334	CEFN HIR, SHOOTING STAND VI
		289335	CEFN HIR, SHOOTING STAND II
		289336	CEFN HIR, SHOOTING STAND I
		289337	CEFN HIR, SHOOTING STAND V
		289050	GWAUNCESTE HILL, FINDSPOT
		289052	GWAUNCESTE HILL, POND III
		289053	WERN, QUARRY
		289091	CWM CRAWNLLWYN, POND
		289102	LITTLE HILL, POND I
		289118	GWAUNCESTE HILL, POND I
		289150	CNWCH, SPOIL TIP
		289186	COLVA HILL, STONE PILE
		289187	COLVA HILL, SHOOTING STAND I
		289188	COLVA HILL, SHOOTING STAND II
		289189	COLVA HILL, SHOOTING STAND III
		289190	COLVA HILL, SHOOTING STAND IV
		289218	CAETY TRAYLOW, SHOOTING STAND III
		289219	CAETY TRAYLOW, SHOOTING STAND IV
		289220	CAETY TRAYLOW, SHOOTING STAND V
		289221	CAETY TRAYLOW, SHOOTING STAND VI
		289222	CAETY TRAYLOW, SHOOTING STAND VII
		289223	CAETY TRAYLOW, SHOOTING STAND XIV
		289224	CAETY TRAYLOW, SHOOTING STAND IX
		289225	CAETY TRAYLOW, SHOOTING STAND I
		289247	COLVA HILL, SHEEP FOLD
		289278	FOICE, POND
		289279	COLVA HILL, SHOOTING STAND X
		289280	COLVA HILL, SHOOTING STAND VIII
		289281	COLVA HILL, SHOOTING STAND VII
		289282	COLVA HILL, SHOOTING STAND VI
		289283	COLVA HILL, SHOOTING STAND XII
		289295	BLAEN HEATH, SHOOTING STAND
<b>Modern?</b>	<b>10</b>		
		289038	GWAUNCESTE HILL, TRIANGULATION POINT
		289058	GWAUNCESTE HILL, POND II
		289060	CLAS BROOK, POND
		289074	LITTLE HILL, POND II
		289077	CWM TWRCH, POND
		289087	LITTLE HILL, POND IV
		289138	CWM CESTE, PIT

**Unknown**

**35**

289239	CWM GRIFFIN, PLATFORM I
289243	LLANFIHANGEL HILL, POND I
289297	BEILI BEDW, TERRACE
289011	LITTLE HILL, MOUND I
289012	LITTLE HILL, CULTIVATION RIDGES II
289016	LITTLE HILL, MOUND II
289018	LITTLE HILL, PLATFORM I
289361	BLAEN BEDW, MOUND I
289039	GWAUNCESTE HILL, PLATFORM VI
289040	GWAUNCESTE HILL, GULLY I
289041	GWAUNCESTE HILL, GULLY II
289042	GWAUNCESTE HILL, GULLY III
289043	GWAUNCESTE HILL, GULLY IV
289044	GWAUNCESTE HILL, GULLY V
289045	GWAUNCESTE HILL, TRACKWAY II
289046	GWAUNCESTE HILL, DITCH I
289047	GWAUNCESTE HILL, TRACKWAY III
289048	GWAUNCESTE HILL, DITCH II
289049	GWAUNCESTE HILL, DITCH III
289054	LITTLE HILL, EARTHWORK I
289055	LITTLE HILL, MOUND IV
289056	BLAEN HEATH, QUARRY
289057	BLAEN HEATH, EARTHWORK I
289078	LITTLE HILL, BANK III
289107	GWAUNCESTE HILL, EARTHWORK
289120	GWAUNCESTE HILL, MOUND
289123	GILWERN BROOK, EARTHWORK I
289124	GILWERN BROOK, EARTHWORK IV
289168	BRYNTEGAN, MOUND II
289215	CWM GRIFFIN, EARTHWORK
289226	CAETY TRAYLOW, MOUND
289232	CWM CESTE, MOUND IV
289249	CWM CESTE, MOUND I
289250	CWM CESTE, MOUND V
289251	CWM CESTE, MOUND III
289252	CWM CESTE, MOUND II
289292	BLAEN HEATH, EARTHWORK II
289296	BEILI BEDW, STONE



## Appendix C – Contour Summary

<i>Contour Band</i>	<i>Number</i>	<i>NPRN</i>	<i>Site Name</i>
<b>300m to 349m</b>	<b>11</b>	289002	LITTLE HILL, QUARRY II
		289003	UPPER YSGAWEN, QUARRY IV
		289005	UPPER YSGAWEN, FARMSTEAD
		289007	TY'N-Y-COED, WELL
		289008	LITTLE HILL, SHEEP FOLD II
		289009	LITTLE HILL, SHEEP FOLD I
		289010	LITTLE HILL, ENCLOSURE II
		289011	LITTLE HILL, MOUND I
		289020	UPPER YSGAWEN, QUARRY II
		289021	UPPER YSGAWEN, FARMHOUSE
		289080	GELLIDYWYLL, PLATFORM VI
<b>350m to 399m</b>	<b>126</b>	306091	CWMCESTE, BARROW
		308023	GILWERN BROOK, BARROW II
		308021	GILWERN BROOK, BARROW I
		306129	GELLI DYWYLLI, HOUSE PLATFORM III
		306128	GELLI DYWYLLI, HOUSE PLATFORM II
		306127	GELLI DYWYLLI, HOUSE PLATFORM I
		40304	LLANHAYLOW, LINEAR EARTHWORK
		289000	LITTLE HILL, QUARRY I
		289001	LITTLE HILL, ENCLOSURE I
		289004	UPPER YSGAWEN, QUARRY I
		289012	LITTLE HILL, CULTIVATION RIDGES II
		289013	LITTLE HILL, QUARRY III
		289014	LITTLE HILL, BUILDING I
		289015	LITTLE HILL, QUARRY IV
		289016	LITTLE HILL, MOUND II
		289017	LITTLE HILL, QUARRY V
		289018	LITTLE HILL, PLATFORM I
		289019	LITTLE HILL, BANK I
		289022	UPPER YSGAWEN, QUARRY III
		289023	LITTLE HILL, QUARRY VI
		289024	TY'N-Y-COED, QUARRY I
		289025	TY'N-Y-COED, QUARRY III
		289026	TY'N-Y-COED, TRACKWAY
		289303	BEILI BEDW, LONG HUT I
		289304	BEILI BEDW, TRACKWAY I
		289305	BEILI BEDW, TRACKWAY II
		289306	BEILI BEDW, BANK
		289309	GLADESTRY BROOK, BANK IV
		289315	CEFN HIR, BANK I
		289323	CAETY TRAYLOW, PLATFORM I
		289324	CAETY TRAYLOW, PLATFORM II
		289325	CWM EINION, PLATFORM II
		289326	CWM EINION, PLATFORM I
		289329	LLANHAYLOW, QUARRY I
		289338	CWM EINION, CULTIVATION RIDGES
		289339	PANT GLAS, COTTAGE
		289340	PANT GLAS, FIELD SYSTEM
		289346	BLAEN ROTHROW, TRACKWAY I
		289347	BLAEN ROTHROW, TRACKWAY II
		289349	BEILI BEDW, ENCLOSURE

<i>Contour Band</i>	<i>Number</i>	<i>NPRN</i>	<i>Site Name</i>
<b>350m to 399m contd</b>		289350	BEILI BEDW, DESERTED RURAL SETTLEMENT
		289355	BLACK YATT, BARN
		289357	BLACK YATT, PLANTATION II
		289359	BEILI BEDW, PLANTATION II
		289360	BEILI BEDW, PLANTATION I
		289362	GELLIDYWYLL, PLATFORM III
		289363	GELLIDYWYLL, PLATFORM II
		289364	GELLIDYWYLL, PLATFORM I
		289365	GELLIDYWYLL, PLATFORM IV
		289366	GELLIDYWYLL, EARTHWORK
		289367	GELLIDYWYLL, PLATFORM V
		289051	GWAUNCESTE HILL, LONG HUT
		289053	WERN, QUARRY
		289069	UPPER CWM-TWRCH, QUARRY III
		289070	UPPER CWM-TWRCH, QUARRY II
		289081	GELLIDYWYLL, PLATFORM VII
		289086	GLASCWM-IG, QUARRY IV
		289088	GLASCWM-IG, QUARRY II
		289089	GLASCWM-IG, BANK
		289090	GLASCWM-IG, QUARRY I
		289092	GLASCWM-IG, QUARRY III
		289093	GLASCWM-IG, QUARRY VI
		289095	LITTLE HILL, ENCLOSURE III
		289096	LITTLE HILL, CULTIVATION RIDGES I
		289097	LITTLE HILL, ENCLOSURE IV
		289098	LITTLE HILL, TRACKWAY I
		289099	LITTLE HILL, TRACKWAY II
		289104	GWAUNCESTE HILL, PLATFORM I
		289105	GWAUNCESTE HILL, PLATFORM II
		289106	GWAUNCESTE HILL, PLATFORM III
		289107	GWAUNCESTE HILL, EARTHWORK
		289108	GWAUNCESTE HILL, PLATFORM V
		289110	GWAUNCESTE HILL, PLATFORM IV
		289111	GWAUNCESTE HILL, SHELTER
		289112	GWAUNCESTE HILL, TRACKWAY I
		289113	GWAUNCESTE HILL, CULTIVATION RIDGES II
		289115	GILWERN BROOK, EARTHWORK III
		289117	GILWERN BROOK, EARTHWORK II
		289119	GWAUNCESTE HILL, WATERCOURSE
		289120	GWAUNCESTE HILL, MOUND
		289121	GWAUNCESTE HILL, TRACKWAY IV
		289122	GILWERN BROOK, SHEEP FOLD
		289123	GILWERN BROOK, EARTHWORK I
		289124	GILWERN BROOK, EARTHWORK IV
		289125	GILWERN BROOK, TRACKWAY II
		289126	CAETY TRAYLOW, BANK II
		289127	CAETY TRAYLOW, CULTIVATION RIDGES II
		289128	GILWERN BROOK, CULTIVATION RIDGES
		289131	CWM Y BONT, BANK
		289132	CWM Y BONT, QUARRY I
		289133	CWM Y BONT, QUARRY II
		289134	CWM Y BONT, TRACKWAY
		289138	CWM CESTE, PIT
		289139	CWM CESTE, EARTHWORK I

<i>Contour Band</i>	<i>Number</i>	<i>NPRN</i>	<i>Site Name</i>
		289140	CWM CESTE, BANK II
		289149	CWNC BANK, POND
<b>350m to 399m contd</b>		289151	CNWCH, QUARRY V
		289152	CNWCH, QUARRY IV
		289153	CNWCH, QUARRY III
		289154	CNWCH, QUARRY II
		289155	CNWCH, QUARRY I
		289156	CWM CESTE, QUARRY II
		289157	CWM CESTE, QUARRY IV
		289160	GILWERN BROOK, BANK
		289161	GILWERN BROOK, TRACKWAY I
		289162	BRYNTEGAN, QUARRY II
		289174	LLANHAYLOW, QUARRY II
		289177	COLVA HILL, PLATFORM V
		289183	GLADESTRY BROOK, BANK I
		289184	GLADESTRY BROOK, BANK II
		289192	COLVA, QUARRY I
		289193	COLVA FARM, QUARRY
		289261	BEILI BEDW, DAM
		289262	BEILI BEDW, STRUCTURE
		289263	BEILI BEDW, LONG HUT II
		289266	CWM TWRCH, QUARRY VI
		289267	CWM TWRCH, QUARRY V
		289272	BLACK YATT, BUILDING
		289273	BLACK YATT, OUTBUILDING
		289274	BLACK YATT, FARMHOUSE
		289275	BLACK YATT, LEAT
		289276	CWM TWRCH, QUARRY IV
		289278	FOICE, POND
		289286	BLACK YATT, ENCLOSURE
		289287	BLACK YATT, FIELD SYSTEM
		289288	BLACK YATT, BANK II
<b>400m to 449m</b>	<b>142</b>	32528	GELLIDYWYLL FARM, SPRING
		24594	GIANTS GRAVE, BARROW
		289028	BLAEN BEDW, RIDGE AND FURROW
		289029	BLAEN BEDW, TRACKWAY
		289308	CWM TWRCH, MOUND II
		289310	CARREG GWYN, QUARRY I
		289311	CARREG GWYN, QUARRY II
		289312	CEFN HIR, EARTHWORK
		289313	CEFN HIR, BANK III
		289314	CEFN HIR, BANK II
		289322	CAETY TRAYLOW, QUARRY I
		289332	CARREG GWYN, EARTHWORK
		289333	CARREG GWYN, QUARRY IV
		289343	CWM GRIFFIN, BANK II
		289344	CWM GRIFFIN, PLATFORM II
		289348	COLVA HILL, TRACKWAY II
		289352	COLVA HILL, TRACKWAY I
		289354	TYN-Y-COED, QUARRY II
		289356	BLACK YATT, PLANTATION I
		289358	CEFN HIR, QUARRY
		289361	BLAEN BEDW, MOUND I
		289368	FFYNNONAU, BANK IV
		289369	FFYNNONAU, BANK III

<i>Contour Band</i>	<i>Number</i>	<i>NPRN</i>	<i>Site Name</i>
		289370	FFYNNONAU, FIELD SYSTEM
		289371	FFYNNONAU, CULTIVATION RIDGES
<b>400m to 449m contd</b>		289372	COLVA HILL, CULTIVATION RIDGES
		289374	PANT GLAS, CULTIVATION RIDGES
		289050	GWAUNCESTE HILL, FINDSPOT
		289054	LITTLE HILL, EARTHWORK I
		289055	LITTLE HILL, MOUND IV
		289065	CLAS BROOK, PLATFORM III
		289066	CWM TWRCH, QUARRY II
		289067	CWM TWRCH, BANK III
		289068	CWM TWRCH, QUARRY I
		289071	UPPER CWM-TWRCH, QUARRY I
		289072	CWM TWRCH, FIELD SYSTEM
		289073	CWM TWRCH, CULTIVATION RIDGES
		289074	LITTLE HILL, POND II
		289075	LITTLE HILL, MOUND III
		289078	LITTLE HILL, BANK III
		289079	LITTLE HILL, EARTHWORK II
		289082	LITTLE HILL, POND III
		289083	LITTLE HILL, QUARRY VIII
		289084	GLASCWM-IG, ENCLOSURE I
		289085	GLASCWM-IG, QUARRY V
		289087	LITTLE HILL, POND IV
		289094	GLASCWM-IG, ENCLOSURE II
		289100	LITTLE HILL, BANK II
		289101	LITTLE HILL, QUARRY VII
		289102	LITTLE HILL, POND I
		289109	GWAUNCESTE HILL, BANK
		289114	GWAUNCESTE HILL, CULTIVATION RIDGES
		289116	GILWERN BROOK, ENCLOSURE
		289118	GWAUNCESTE HILL, POND I
		289129	CAETY TRAYLOW, LINEAR EARTHWORK
		289130	CAETY TRAYLOW, CULTIVATION RIDGES I
		289135	CWM Y BONT, CULTIVATION RIDGES
		289136	CAETY TRAYLOW, TRACKWAY
		289137	CAETY TRAYLOW, CULTIVATION RIDGES III
		289141	CWM CESTE, PLATFORM
		289142	CWM CESTE, EARTHWORK II
		289143	CWM CESTE, BANK I
		289144	CWM CESTE, CULTIVATION RIDGES
		289150	CNWCH, SPOIL TIP
		289158	CWM CESTE, QUARRY III
		289159	CWM CESTE, QUARRY I
		289163	BRYNTEGAN, TRACKWAY
		289164	BRYNTEGAN, QUARRY III
		289165	BRYNTEGAN, MOUND I
		289166	BRYNTEGAN, PLATFORM II
		289167	BRYNTEGAN, PLATFORM I
		289168	BRYNTEGAN, MOUND II
		289169	BRYNTEGAN, BANK
		289170	BRYNTEGAN, QUARRY IV
		289171	BRYNTEGAN, QUARRY V
		289172	BRYNTEGAN, QUARRY I
		289173	LLANHAYLOW, CULTIVATION RIDGES

<i>Contour Band</i>	<i>Number</i>	<i>NPRN</i>	<i>Site Name</i>
		289175	COLVA HILL, FIELD
		289176	COLVA HILL, QUARRY II
		289178	COLVA HILL, PLATFORM IV
		289179	COLVA HILL, BANK
		289180	COLVA HILL, PLATFORM II
<b>400m to 449m contd</b>		289181	COLVA HILL, QUARRY I
		289182	COLVA HILL, PLATFORM VII
		289185	GLADESTRY BROOK, BANK III
		289191	COLVA, QUARRY IV
		289194	CWM SHENKIN, PLATFORM
		289195	CWM SHENKIN, EARTHWORK
		289196	CWM SHENKIN, ENCLOSURE II
		289197	CWM SHENKIN, QUARRY
		289198	CWM SHENKIN, ENCLOSURE I
		289199	CWM SHENKIN, CULTIVATION RIDGES II
		289200	CWM SHENKIN, CULTIVATION RIDGES I
		289201	COLVA, QUARRY II
		289202	CWM SHENKIN, STONE SCATTER
		289204	UPPER YSGAWEN, QUARRY V
		289207	COLVA, QUARRY III
		289208	COLVA, PLATFORM
		289227	CWM GRIFFIN, QUARRY
		289231	GLADESTRY HILL, LONG HUT
		289232	CWM CESTE, MOUND IV
		289233	UPPER FFYNNONAU, BANK
		289234	UPPER FFYNNONAU, PLATFORM
		289235	CWM GRIFFIN, ENCLOSURE I
		289236	CWM GRIFFIN, STONE PILE
		289238	CWM GRIFFIN, LEAT
		289239	CWM GRIFFIN, PLATFORM I
		289240	FFYNNONAU, BANK I
		289241	FFYNNONAU, ENCLOSURE
		289242	FFYNNONAU, BANK II
		289247	COLVA HILL, SHEEP FOLD
		289248	BRYNTEGAN, CULTIVATION RIDGES
		289249	CWM CESTE, MOUND I
		289250	CWM CESTE, MOUND V
		289251	CWM CESTE, MOUND III
		289252	CWM CESTE, MOUND II
		289253	CWM CESTE, EARTHWORK VII
		289254	CWM CESTE, EARTHWORK III
		289255	CWM CESTE, EARTHWORK IV
		289256	CWM CESTE, EARTHWORK V
		289257	CWM CESTE, EARTHWORK VI
		289258	CWM CESTE, BANK III
		289259	CWM CESTE, TRACKWAY
		289260	BEILI BEDW, QUARRY
		289264	CWM TWRCH, BANK V
		289265	CWM TWRCH, BANK I
		289268	CWM TWRCH, BANK IV
		289269	CWM TWRCH, MOUND I
		289271	BLACK YATT, POND
		289277	CWM TWRCH, QUARRY III
		289284	CEFN HIR, TRACKWAY
		289285	CARREG GWYN, TRACKWAY I
		289289	BLACK YATT, BANK I
		289290	BLAEN HEATH, BANK II
		289291	BLAEN HEATH, TERRACE



<i>Contour Band</i>	<i>Number</i>	<i>NPRN</i>	<i>Site Name</i>
		289292	BLAEN HEATH, EARTHWORK II
		289293	BLAEN HEATH, LONG HUT
		289294	BLAEN HEATH, BANK I
		289296	BEILI BEDW, STONE
		289297	BEILI BEDW, TERRACE
<b>400m to 449m contd</b>		289298	BLACK YATT, BANK IV
		289300	BLACK YATT, BANK III
<b>450m to 499m</b>	<b>66</b>	289027	LITTLE HILL, MOUND V
		289030	BLAEN BEDW, MOUND II
		289031	LLYN Y WAUN, POND II
		289032	LLYN Y WAUN, GULLY II
		289301	COLVA HILL, SHOOTING STAND XI
		289307	CARREG GWYN, TRACKWAY II
		289316	CEFN HIR, SHOOTING STAND III
		289321	CAETY TRAYLOW, SHOOTING STAND VIII
		289328	COLVA HILL, SHOOTING STAND V
		289330	CARREG GWYN, QUARRY III
		289327	CAETY TRAYLOW, SHOOTING STAND II
		289335	CEFN HIR, SHOOTING STAND II
		289336	CEFN HIR, SHOOTING STAND I
		289337	CEFN HIR, SHOOTING STAND V
		289341	MOUNTAIN HALL, QUARRY I
		289342	MOUNTAIN HALL, QUARRY II
		289345	CWM GRIFFIN, PLATFORM III
		289353	CAETY TRAYLOW, QUARRY II
		289373	LLYN Y WAUN, CULTIVATION RIDGES
		289033	LLYN Y WAUN, GULLY I
		289034	LLYN Y WAUN, QUARRY
		289035	LLYN Y WAUN, POND I
		289036	LLYN Y WAUN, BANK
		289037	LLYN Y WAUN, DRAINAGE SYSTEM
		289046	GWAUNCESTE HILL, DITCH I
		289047	GWAUNCESTE HILL, TRACKWAY III
		289048	GWAUNCESTE HILL, DITCH II
		289049	GWAUNCESTE HILL, DITCH III
		289056	BLAEN HEATH, QUARRY
		289057	BLAEN HEATH, EARTHWORK I
		289059	CLAS BROOK, BANK II
		289060	CLAS BROOK, POND
		289061	CLAS BROOK, PLATFORM I
		289062	CLAS BROOK, BANK I
		289063	CLAS BROOK, SHELTER
		289064	CLAS BROOK, PLATFORM II
		289076	LITTLE HILL, QUARRY IX
		289077	CWM TWRCH, POND
		289103	LITTLE HILL, ROUND BARROW
		289145	LLANFIHANGEL HILL, QUARRY
		289146	LLANFIHANGEL HILL, TRACKWAY
		289186	COLVA HILL, STONE PILE
		289203	FFYNNONAU, QUARRY
		289205	COLVA HILL, PLATFORM III
		289206	COLVA HILL, PLATFORM VI
		289209	CWM GRIFFIN, ENCLOSURE II
		289210	CWM GRIFFIN, BANK IV

<i>Contour Band</i>	<i>Number</i>	<i>NPRN</i>	<i>Site Name</i>
		289211	CWM GRIFFIN, BANK III
		289212	CWM GRIFFIN, LONGHOUSE
		289213	CWM GRIFFIN, CULTIVATION RIDGES I
		289214	CWM GRIFFIN, CULTIVATION RIDGES II
		289215	CWM GRIFFIN, EARTHWORK
<b>450m to 499m contd</b>		289216	LLANFIHANGEL HILL, BANK
		289218	CAETY TRAYLOW, SHOOTING STAND III
		289219	CAETY TRAYLOW, SHOOTING STAND IV
		289229	GLADESTRY HILL, BANK
		289243	LLANFIHANGEL HILL, POND I
		289244	LLANFIHANGEL HILL, POND II
		289245	UPPER FFYNNONAU, BANK
		289246	COLVA HILL, PLATFORM I
		289270	LITTLE HILL, POND V
		289279	COLVA HILL, SHOOTING STAND X
		289280	COLVA HILL, SHOOTING STAND VIII
		289281	COLVA HILL, SHOOTING STAND VII
		289282	COLVA HILL, SHOOTING STAND VI
		289283	COLVA HILL, SHOOTING STAND XII
<b>500m to 549m</b>	<b>35</b>	306098	LLANFIHANGEL HILL, BARROW
		289302	COLVA HILL, SHOOTING STAND IX
		289317	CAETY TRAYLOW, SHOOTING STAND XI
		289318	CAETY TRAYLOW, SHOOTING STAND XII
		289319	CAETY TRAYLOW, SHOOTING STAND XIII
		289320	CAETY TRAYLOW, SHOOTING STAND X
		289331	CEFN HIR, SHOOTING STAND IV
		289334	CEFN HIR, SHOOTING STAND VI
		289038	GWAUNCESTE HILL, TRIANGULATION POINT
		289039	GWAUNCESTE HILL, PLATFORM VI
		289040	GWAUNCESTE HILL, GULLY I
		289041	GWAUNCESTE HILL, GULLY II
		289042	GWAUNCESTE HILL, GULLY III
		289043	GWAUNCESTE HILL, GULLY IV
		289044	GWAUNCESTE HILL, GULLY V
		289045	GWAUNCESTE HILL, TRACKWAY II
		289052	GWAUNCESTE HILL, POND III
		289058	GWAUNCESTE HILL, POND II
		289091	CWM CRAWNLLWYN, POND
		289147	LLANFIHANGEL HILL, MOUND I
		289148	LLANFIHANGEL HILL, MOUND II
		289187	COLVA HILL, SHOOTING STAND I
		289188	COLVA HILL, SHOOTING STAND II
		289189	COLVA HILL, SHOOTING STAND III
		289190	COLVA HILL, SHOOTING STAND IV
		289217	LLANFIHANGEL HILL, MOUND III
		289220	CAETY TRAYLOW, SHOOTING STAND V
		289221	CAETY TRAYLOW, SHOOTING STAND VI
		289222	CAETY TRAYLOW, SHOOTING STAND VII
		289223	CAETY TRAYLOW, SHOOTING STAND XIV
		289224	CAETY TRAYLOW, SHOOTING STAND IX
		289225	CAETY TRAYLOW, SHOOTING STAND I
		289226	CAETY TRAYLOW, MOUND
		289228	CAETY TRAYLOW, BANK I
		289295	BLAEN HEATH, SHOOTING STAND

**Appendix D - Uplands Initiative Aerial Photo Mapping Gwaunceste**

	<b>Temporary ID number:</b> 1	<b>NPRN:</b> 0
<b>Initial Interpretation:</b>	DITCH identified from Ordnance Survey vertical AP 00 930 - 0544	
<b>Field Interpretation:</b>	Natural gully	
	<b>Temporary ID number:</b> 2	<b>NPRN:</b> 0
<b>Initial Interpretation:</b>	DITCH identified from Ordnance Survey vertical AP 00 930 - 0544	
<b>Field Interpretation:</b>	Natural gully	
	<b>Temporary ID number:</b> 3	<b>NPRN:</b> 289100
<b>Initial Interpretation:</b>	BANK identified from Ordnance Survey vertical AP 00 930 - 0544	
<b>Field Interpretation:</b>	BANK, seen on the ground as shown on AP mapping.	
	<b>Temporary ID number:</b> 4	<b>NPRN:</b> 0
<b>Initial Interpretation:</b>	BANK identified from Ordnance Survey vertical AP 00 930 - 0544	
<b>Field Interpretation:</b>	Not seen during fieldwork	
	<b>Temporary ID number:</b> 5	<b>NPRN:</b> 0
<b>Initial Interpretation:</b>	BANK identified from Ordnance Survey vertical AP 00 930 - 0544	
<b>Field Interpretation:</b>	Modern trackway	
	<b>Temporary ID number:</b> 6	<b>NPRN:</b> 289346
<b>Initial Interpretation:</b>	TRACKWAY identified from Ordnance Survey vertical AP 00 930 - 0544	
<b>Field Interpretation:</b>	TRACKWAY	
	<b>Temporary ID number:</b> 7	<b>NPRN:</b> 289347
<b>Initial Interpretation:</b>	TRACKWAY identified from Ordnance Survey vertical AP 00 930 - 0544	
<b>Field Interpretation:</b>	TRACKWAY, a narrow pathway, only 0.50m wide	
	<b>Temporary ID number:</b> 8	<b>NPRN:</b> 0
<b>Initial Interpretation:</b>	BANK identified from Ordnance Survey vertical AP 00 930 - 0544	
<b>Field Interpretation:</b>	Outside study area	
	<b>Temporary ID number:</b> 9	<b>NPRN:</b> 0
<b>Initial Interpretation:</b>	MOUND identified from Ordnance Survey vertical AP 00 930 - 0544	
<b>Field Interpretation:</b>	Outside study area, large earth platform, but, no NPRN	
	<b>Temporary ID number:</b> 10	<b>NPRN:</b> 0
<b>Initial Interpretation:</b>	BANK identified from Ordnance Survey vertical AP 00 930 - 0544	

<b>Field Interpretation:</b>	Land improved. Not found during fieldwork.
	<b>Temporary ID number:</b> 11 <b>NPRN:</b> 0
<b>Initial Interpretation:</b>	BANK identified from Ordnance Survey vertical AP 00 930 - 0544
<b>Field Interpretation:</b>	Land improved. Not found during fieldwork.
	<b>Temporary ID number:</b> 12 <b>NPRN:</b> 289349
<b>Initial Interpretation:</b>	BANK identified from Ordnance Survey vertical AP 00 930 - 0544
<b>Field Interpretation:</b>	ENCLOSURE at Beili Bedw
	<b>Temporary ID number:</b> 13 <b>NPRN:</b> 289304
<b>Initial Interpretation:</b>	DITCH identified from Ordnance Survey vertical AP 00 930 - 0544
<b>Field Interpretation:</b>	TRACKWAY in Belil Bedw DRS
	<b>Temporary ID number:</b> 14 <b>NPRN:</b> 0
<b>Initial Interpretation:</b>	TRACKWAY identified from Ordnance Survey vertical AP 00 930 - 0544
<b>Field Interpretation:</b>	Erosion from cattle trampling
	<b>Temporary ID number:</b> 15 <b>NPRN:</b> 289305
<b>Initial Interpretation:</b>	DITCH identified from Ordnance Survey vertical AP 00 930 - 0544
<b>Field Interpretation:</b>	TRACKWAY or LEAT
	<b>Temporary ID number:</b> 16 <b>NPRN:</b> 289306
<b>Initial Interpretation:</b>	BANK identified from Ordnance Survey vertical AP 00 930 - 0544
<b>Field Interpretation:</b>	BANK at Beili Bedw DRS
	<b>Temporary ID number:</b> 17 <b>NPRN:</b> 0
<b>Initial Interpretation:</b>	TRACKWAY identified from Ordnance Survey vertical AP 00 930 - 0544
<b>Field Interpretation:</b>	Land improved. Not found during fieldwork.
	<b>Temporary ID number:</b> 18 <b>NPRN:</b> 0
<b>Initial Interpretation:</b>	TRACKWAY identified from Ordnance Survey vertical AP 00 930 - 0544
<b>Field Interpretation:</b>	Land improved. Not found during fieldwork.
	<b>Temporary ID number:</b> 19 <b>NPRN:</b> 0
<b>Initial Interpretation:</b>	TRACKWAY identified from Ordnance Survey vertical AP 00 930 - 0544
<b>Field Interpretation:</b>	Land improved. Not found during fieldwork.
	<b>Temporary ID number:</b> 20 <b>NPRN:</b> 0
<b>Initial Interpretation:</b>	TRACKWAY identified from Ordnance Survey vertical AP 00 930 - 0544

<b>Field Interpretation:</b>	Land improved. Not found during fieldwork.
	<b>Temporary ID number:</b> 21 <b>NPRN:</b> 0
<b>Initial Interpretation:</b>	TRACKWAY identified from Ordnance Survey vertical AP 00 930 - 0544
<b>Field Interpretation:</b>	Land improved. Not found during fieldwork.
	<b>Temporary ID number:</b> 22 <b>NPRN:</b> 0
<b>Initial Interpretation:</b>	TRACKWAY identified from Ordnance Survey vertical AP 00 930 - 0544
<b>Field Interpretation:</b>	Land improved. Not found during fieldwork.
	<b>Temporary ID number:</b> 23 <b>NPRN:</b> 0
<b>Initial Interpretation:</b>	TRACKWAY identified from Ordnance Survey vertical AP 00 930 - 0544
<b>Field Interpretation:</b>	Land improved. Not found during fieldwork.
	<b>Temporary ID number:</b> 24 <b>NPRN:</b> 0
<b>Initial Interpretation:</b>	TRACKWAY identified from Ordnance Survey vertical AP 00 930 - 0544
<b>Field Interpretation:</b>	Land improved. Not found during fieldwork.
	<b>Temporary ID number:</b> 25 <b>NPRN:</b> 0
<b>Initial Interpretation:</b>	BANK identified from RAF vertical AP 106G/UK 922 - 4205
<b>Field Interpretation:</b>	Outside study area
	<b>Temporary ID number:</b> 26 <b>NPRN:</b> 0
<b>Initial Interpretation:</b>	TRACKWAY identified from RAF vertical AP 106G/UK 922 - 4205
<b>Field Interpretation:</b>	Not seen during fieldwork
	<b>Temporary ID number:</b> 27 <b>NPRN:</b> 0
<b>Initial Interpretation:</b>	TRACKWAY identified from RAF vertical AP 106G/UK 922 - 4205
<b>Field Interpretation:</b>	Natural gully
	<b>Temporary ID number:</b> 28 <b>NPRN:</b> 0
<b>Initial Interpretation:</b>	TRACKWAY identified from RAF vertical AP 106G/UK 922 - 4205
<b>Field Interpretation:</b>	Outside study area
	<b>Temporary ID number:</b> 29 <b>NPRN:</b> 289307
<b>Initial Interpretation:</b>	TRACKWAY identified from RAF vertical AP 106G/UK 922 - 4205
<b>Field Interpretation:</b>	TRACKWAY to Carreg Gwyn quarry NPRN 289330
	<b>Temporary ID number:</b> 30 <b>NPRN:</b> 289284
<b>Initial Interpretation:</b>	TRACKWAY identified from RAF vertical AP 106G/UK 922 - 4205



<b>Field Interpretation:</b>	TRACKWAY, no longer used
	<b>Temporary ID number:</b> 31
	<b>NPRN:</b> 289284
<b>Initial Interpretation:</b>	TRACKWAY identified from RAF vertical AP 106G/UK 922 - 4205
<b>Field Interpretation:</b>	TRACKWAY, no longer used
	<b>Temporary ID number:</b> 32
	<b>NPRN:</b> 289285
<b>Initial Interpretation:</b>	TRACKWAY identified from RAF vertical AP 106G/UK 922 - 4205
<b>Field Interpretation:</b>	TRACKWAY to quarry NPRN 289311
	<b>Temporary ID number:</b> 33
	<b>NPRN:</b> 289286
<b>Initial Interpretation:</b>	BANK identified from RAF vertical AP 106G/UK 836 - 4048
<b>Field Interpretation:</b>	ENCLOSURE, southern part of mapped feature is part of enclosure NPRN 289286
	<b>Temporary ID number:</b> 34
	<b>NPRN:</b> 0
<b>Initial Interpretation:</b>	BANK identified from RAF vertical AP 106G/UK 836 - 4048
<b>Field Interpretation:</b>	Probably natural feature
	<b>Temporary ID number:</b> 35
	<b>NPRN:</b> 289275
<b>Initial Interpretation:</b>	BANK identified from RAF vertical AP 106G/UK 836 - 4048
<b>Field Interpretation:</b>	Part of drainage leat NPRN 289275
	<b>Temporary ID number:</b> 36
	<b>NPRN:</b> 289286
<b>Initial Interpretation:</b>	BANK identified from RAF vertical AP 106G/UK 836 - 4048
<b>Field Interpretation:</b>	ENCLOSURE, part of enclosure NPRN 289286
	<b>Temporary ID number:</b> 37
	<b>NPRN:</b> 289287
<b>Initial Interpretation:</b>	BANK identified from RAF vertical AP 106G/UK 836 - 4048
<b>Field Interpretation:</b>	FIELD SYSTEM, Elements of a field system at Black Yatt, damaged by improvement
	<b>Temporary ID number:</b> 38
	<b>NPRN:</b> 289287
<b>Initial Interpretation:</b>	BANK identified from RAF vertical AP 106G/UK 836 - 4048
<b>Field Interpretation:</b>	FIELD SYSTEM, Elements of a field system at Black Yatt, damaged by improvement
	<b>Temporary ID number:</b> 39
	<b>NPRN:</b> 0
<b>Initial Interpretation:</b>	TRACKWAY identified from RAF vertical AP 106G/UK 836 - 4048
<b>Field Interpretation:</b>	Result of modern land improvement

	<b>Temporary ID number:</b> 40	<b>NPRN:</b> <b>0</b>
<b>Initial Interpretation:</b>	TRACKWAY identified from RAF vertical AP 106G/UK 836 - 4048	
<b>Field Interpretation:</b>	Result of modern land improvement	
	<b>Temporary ID number:</b> 41	<b>NPRN:</b> <b>0</b>
<b>Initial Interpretation:</b>	TRACKWAY identified from RAF vertical AP 106G/UK 836 - 4048	
<b>Field Interpretation:</b>	Result of modern land improvement	
	<b>Temporary ID number:</b> 42	<b>NPRN:</b> <b>0</b>
<b>Initial Interpretation:</b>	TRACKWAY identified from RAF vertical AP 106G/UK 836 - 4048	
<b>Field Interpretation:</b>	Result of modern land improvement	
	<b>Temporary ID number:</b> 43	<b>NPRN:</b> <b>0</b>
<b>Initial Interpretation:</b>	TRACKWAY identified from RAF vertical AP 106G/UK 836 - 4048	
<b>Field Interpretation:</b>	Result of modern land improvement	
	<b>Temporary ID number:</b> 44	<b>NPRN:</b> <b>0</b>
<b>Initial Interpretation:</b>	TRACKWAY identified from RAF vertical AP 106G/UK 836 - 4048	
<b>Field Interpretation:</b>	Result of modern land improvement	
	<b>Temporary ID number:</b> 45	<b>NPRN:</b> <b>0</b>
<b>Initial Interpretation:</b>	TRACKWAY identified from RAF vertical AP 106G/UK 836 - 4048	
<b>Field Interpretation:</b>	Result of modern land improvement	
	<b>Temporary ID number:</b> 46	<b>NPRN:</b> <b>0</b>
<b>Initial Interpretation:</b>	TRACKWAY identified from RAF vertical AP 106G/UK 836 - 4048	
<b>Field Interpretation:</b>	Result of modern land improvement	
	<b>Temporary ID number:</b> 47	<b>NPRN:</b> <b>0</b>
<b>Initial Interpretation:</b>	BANK identified from RAF vertical AP 106G/UK 836 - 4048	
<b>Field Interpretation:</b>	Nothing seen during fieldwork	
	<b>Temporary ID number:</b> 48	<b>NPRN:</b> <b>0</b>
<b>Initial Interpretation:</b>	TRACKWAY identified from RAF vertical AP 106G/UK 836 - 4048	
<b>Field Interpretation:</b>	Result of modern land improvement	
	<b>Temporary ID number:</b> 49	<b>NPRN:</b> <b>0</b>
<b>Initial Interpretation:</b>	TRACKWAY identified from RAF vertical AP 106G/UK 836 - 4048	
<b>Field Interpretation:</b>	Result of modern land improvement	

	<b>Temporary ID number:</b> 50	<b>NPRN:</b> <b>0</b>
<b>Initial Interpretation:</b>	TRACKWAY identified from RAF vertical AP 106G/UK 836 - 4048	
<b>Field Interpretation:</b>	Result of modern land improvement	
	<b>Temporary ID number:</b> 51	<b>NPRN:</b> <b>0</b>
<b>Initial Interpretation:</b>	DITCH identified from RAF vertical AP 106G/UK 836 - 4048	
<b>Field Interpretation:</b>	Not seen during fieldwork	
	<b>Temporary ID number:</b> 52	<b>NPRN:</b> <b>0</b>
<b>Initial Interpretation:</b>	DITCH identified from RAF vertical AP 106G/UK 836 - 4048	
<b>Field Interpretation:</b>	Probably natural feature	
	<b>Temporary ID number:</b> 53	<b>NPRN:</b> <b>0</b>
<b>Initial Interpretation:</b>	DITCH identified from RAF vertical AP 106G/UK 836 - 4048	
<b>Field Interpretation:</b>	Bank - part of a field system shown on modern Ordnance Survey mapping	
	<b>Temporary ID number:</b> 54	<b>NPRN:</b> <b>0</b>
<b>Initial Interpretation:</b>	DITCH identified from RAF vertical AP 106G/UK 836 - 4048	
<b>Field Interpretation:</b>	Natural drainage channel	
	<b>Temporary ID number:</b> 55	<b>NPRN:</b> <b>0</b>
<b>Initial Interpretation:</b>	TRACKWAY identified from RAF vertical AP 106G/UK 836 - 4048	
<b>Field Interpretation:</b>	Land improved. Not found during fieldwork.	
	<b>Temporary ID number:</b> 56	<b>NPRN:</b> <b>289340</b>
<b>Initial Interpretation:</b>	BANK identified from RAF vertical AP 106G/UK 836 - 4048	
<b>Field Interpretation:</b>	FIELD SYSTEM, Part of Pant Glas field system	
	<b>Temporary ID number:</b> 57	<b>NPRN:</b> <b>289340</b>
<b>Initial Interpretation:</b>	BANK identified from RAF vertical AP 106G/UK 836 - 4048	
<b>Field Interpretation:</b>	FIELD SYSTEM, Part of Pant Glas field system	
	<b>Temporary ID number:</b> 58	<b>NPRN:</b> <b>0</b>
<b>Initial Interpretation:</b>	BANK identified from RAF vertical AP 106G/UK 836 - 4048	
<b>Field Interpretation:</b>	Natural gully	
	<b>Temporary ID number:</b> 59	<b>NPRN:</b> <b>0</b>
<b>Initial Interpretation:</b>	TRACKWAY identified from RAF vertical AP 106G/UK 836 - 4048	
<b>Field Interpretation:</b>	Land improved. Not found during fieldwork.	

	<b>Temporary ID number:</b> 60	<b>NPRN:</b> <b>0</b>
<b>Initial Interpretation:</b>	TRACKWAY identified from RAF vertical AP 106G/UK 836 - 4048	
<b>Field Interpretation:</b>	Land improved. Not found during fieldwork.	
	<b>Temporary ID number:</b> 61	<b>NPRN:</b> <b>0</b>
<b>Initial Interpretation:</b>	BANK identified from RAF vertical AP 106G/UK 836 - 4048	
<b>Field Interpretation:</b>	Land improved. Not found during fieldwork.	
	<b>Temporary ID number:</b> 62	<b>NPRN:</b> <b>0</b>
<b>Initial Interpretation:</b>	DITCH identified from RAF vertical AP 106G/UK 836 - 4050	
<b>Field Interpretation:</b>	Not seen during fieldwork. Probably natural	
	<b>Temporary ID number:</b> 63	<b>NPRN:</b> <b>0</b>
<b>Initial Interpretation:</b>	DITCH identified from RAF vertical AP 106G/UK 836 - 4050	
<b>Field Interpretation:</b>	Probably natural feature	
	<b>Temporary ID number:</b> 64	<b>NPRN:</b> <b>289288</b>
<b>Initial Interpretation:</b>	BANK identified from RAF vertical AP 106G/UK 836 - 4050	
<b>Field Interpretation:</b>	BANK, low earthwork feature, still upstanding	
	<b>Temporary ID number:</b> 65	<b>NPRN:</b> <b>289289</b>
<b>Initial Interpretation:</b>	BANK identified from RAF vertical AP 106G/UK 836 - 4050	
<b>Field Interpretation:</b>	BANK, Ploughed out field bank	
	<b>Temporary ID number:</b> 66	<b>NPRN:</b> <b>0</b>
<b>Initial Interpretation:</b>	TRACKWAY identified from RAF vertical AP 106G/UK 836 - 4050	
<b>Field Interpretation:</b>	Land improved. Not found during fieldwork.	
	<b>Temporary ID number:</b> 67	<b>NPRN:</b> <b>0</b>
<b>Initial Interpretation:</b>	TRACKWAY identified from RAF vertical AP 106G/UK 836 - 4050	
<b>Field Interpretation:</b>	Land improved. Not found during fieldwork.	
	<b>Temporary ID number:</b> 68	<b>NPRN:</b> <b>0</b>
<b>Initial Interpretation:</b>	TRACKWAY identified from RAF vertical AP 106G/UK 836 - 4050	
<b>Field Interpretation:</b>	Land improved. Not found during fieldwork.	
	<b>Temporary ID number:</b> 69	<b>NPRN:</b> <b>0</b>
<b>Initial Interpretation:</b>	BANK identified from RAF vertical AP 106G/UK 836 - 4050	
<b>Field Interpretation:</b>	Land improved. Not found during fieldwork.	

	<b>Temporary ID number:</b> 70	<b>NPRN:</b> <b>0</b>
<b>Initial Interpretation:</b>	DITCH identified from RAF vertical AP 106G/UK 836 - 4050	
<b>Field Interpretation:</b>	Land improved. Possibly natural feature	
	<b>Temporary ID number:</b> 71	<b>NPRN:</b> <b>0</b>
<b>Initial Interpretation:</b>	BANK identified from RAF vertical AP 106G/UK 836 - 4050	
<b>Field Interpretation:</b>	Natural gully	
	<b>Temporary ID number:</b> 72	<b>NPRN:</b> <b>0</b>
<b>Initial Interpretation:</b>	TRACKWAY identified from Ordnance Survey vertical AP 00 930 - 0544	
<b>Field Interpretation:</b>	Not seen during fieldwork	
	<b>Temporary ID number:</b> 73	<b>NPRN:</b> <b>0</b>
<b>Initial Interpretation:</b>	DITCH identified from RAF vertical AP 106G/UK 836 - 4050	
<b>Field Interpretation:</b>	Natural drainage channel	
	<b>Temporary ID number:</b> 74	<b>NPRN:</b> <b>0</b>
<b>Initial Interpretation:</b>	DITCH identified from RAF vertical AP 106G/UK 836 - 4050	
<b>Field Interpretation:</b>	Natural drainage channel	
	<b>Temporary ID number:</b> 75	<b>NPRN:</b> <b>0</b>
<b>Initial Interpretation:</b>	BANK identified from RAF vertical AP 106G/UK 836 - 4050	
<b>Field Interpretation:</b>	Land improved. Not found during fieldwork.	
	<b>Temporary ID number:</b> 76	<b>NPRN:</b> <b>0</b>
<b>Initial Interpretation:</b>	BANK identified from Ordnance Survey vertical AP 73 092 - 1203	
<b>Field Interpretation:</b>	Outside study area	
	<b>Temporary ID number:</b> 77	<b>NPRN:</b> <b>289067</b>
<b>Initial Interpretation:</b>	DITCH identified from Ordnance Survey vertical AP 73 092 - 1203	
<b>Field Interpretation:</b>	BANK	
	<b>Temporary ID number:</b> 78	<b>NPRN:</b> <b>289067</b>
<b>Initial Interpretation:</b>	DITCH identified from Ordnance Survey vertical AP 73 092 - 1203	
<b>Field Interpretation:</b>	BANK	
	<b>Temporary ID number:</b> 79	<b>NPRN:</b> <b>0</b>
<b>Initial Interpretation:</b>	PLATFORM identified from Ordnance Survey vertical AP 73 092 - 1203	
<b>Field Interpretation:</b>	Outside study area	

	<b>Temporary ID number:</b> 80	<b>NPRN:</b> <b>0</b>
<b>Initial Interpretation:</b>	BANK identified from Ordnance Survey vertical AP 73 092 - 1203	
<b>Field Interpretation:</b>	Not seen during fieldwork. Area covered by dense bracken	
	<b>Temporary ID number:</b> 81	<b>NPRN:</b> <b>289064</b>
<b>Initial Interpretation:</b>	PLATFORM identified from Ordnance Survey vertical AP 73 092 - 1203	
<b>Field Interpretation:</b>	PLATFORM	
	<b>Temporary ID number:</b> 82	<b>NPRN:</b> <b>0</b>
<b>Initial Interpretation:</b>	BANK identified from Ordnance Survey vertical AP 73 092 - 1203	
<b>Field Interpretation:</b>	Not seen during fieldwork. Area covered by dense bracken	
	<b>Temporary ID number:</b> 83	<b>NPRN:</b> <b>289059</b>
<b>Initial Interpretation:</b>	DITCH identified from Ordnance Survey vertical AP 73 092 - 1203	
<b>Field Interpretation:</b>	BANK, part of NPRN 289059	
	<b>Temporary ID number:</b> 84	<b>NPRN:</b> <b>289059</b>
<b>Initial Interpretation:</b>	DITCH identified from Ordnance Survey vertical AP 73 092 - 1203	
<b>Field Interpretation:</b>	BANK, part of NPRN 289059	
	<b>Temporary ID number:</b> 85	<b>NPRN:</b> <b>0</b>
<b>Initial Interpretation:</b>	DITCH identified from Ordnance Survey vertical AP 73 092 - 1203	
<b>Field Interpretation:</b>	Not seen during fieldwork. Very vegetated area. Possibly associated with NPRN 289059 or a natural gully	
	<b>Temporary ID number:</b> 86	<b>NPRN:</b> <b>0</b>
<b>Initial Interpretation:</b>	DITCH identified from Ordnance Survey vertical AP 73 092 - 1203	
<b>Field Interpretation:</b>	Not seen during fieldwork. Very vegetated area. Possibly associated with NPRN 289059 or a natural gully	
	<b>Temporary ID number:</b> 87	<b>NPRN:</b> <b>0</b>
<b>Initial Interpretation:</b>	DITCH identified from Ordnance Survey vertical AP 73 092 - 1203	
<b>Field Interpretation:</b>	Possibly a natural gully	
	<b>Temporary ID number:</b> 88	<b>NPRN:</b> <b>289062</b>
<b>Initial Interpretation:</b>	DITCH identified from Ordnance Survey vertical AP 73 092 - 1203	
<b>Field Interpretation:</b>	BANK	
	<b>Temporary ID number:</b> 89	<b>NPRN:</b> <b>0</b>
<b>Initial Interpretation:</b>	FENCE identified from Ordnance Survey vertical AP 73 092 - 1201	



<b>Field Interpretation:</b>	Not seen during fieldwork
	<b>Temporary ID number:</b> 90
<b>Initial Interpretation:</b>	<b>NPRN:</b> 0 TRACKWAY identified from Ordnance Survey vertical AP 73 092 - 1201
<b>Field Interpretation:</b>	Trackway shown on 1st edition Ordnance Survey map
	<b>Temporary ID number:</b> 91
<b>Initial Interpretation:</b>	<b>NPRN:</b> 0 BANK identified from Ordnance Survey vertical AP 73 092 - 1203
<b>Field Interpretation:</b>	Outside study area, part of DRS NPRN 276091
	<b>Temporary ID number:</b> 92
<b>Initial Interpretation:</b>	<b>NPRN:</b> 0 BANK identified from Ordnance Survey vertical AP 73 092 - 1203
<b>Field Interpretation:</b>	Outside study area, part of DRS NPRN 276091
	<b>Temporary ID number:</b> 93
<b>Initial Interpretation:</b>	<b>NPRN:</b> 0 BANK identified from Ordnance Survey vertical AP 73 092 - 1203
<b>Field Interpretation:</b>	Outside study area, part of DRS NPRN 276091
	<b>Temporary ID number:</b> 94
<b>Initial Interpretation:</b>	<b>NPRN:</b> 0 BANK identified from Ordnance Survey vertical AP 73 092 - 1203
<b>Field Interpretation:</b>	Outside study area, part of DRS NPRN 276091
	<b>Temporary ID number:</b> 95
<b>Initial Interpretation:</b>	<b>NPRN:</b> 0 BANK identified from Ordnance Survey vertical AP 73 092 - 1203
<b>Field Interpretation:</b>	Outside study area, part of DRS NPRN 276091
	<b>Temporary ID number:</b> 96
<b>Initial Interpretation:</b>	<b>NPRN:</b> 0 BANK identified from Ordnance Survey vertical AP 73 092 - 1203
<b>Field Interpretation:</b>	Outside study area, part of DRS NPRN 276091
	<b>Temporary ID number:</b> 97
<b>Initial Interpretation:</b>	<b>NPRN:</b> 0 BANK identified from Ordnance Survey vertical AP 73 092 - 1203
<b>Field Interpretation:</b>	Outside study area, part of DRS NPRN 276091
	<b>Temporary ID number:</b> 98
<b>Initial Interpretation:</b>	<b>NPRN:</b> 0 BANK identified from Ordnance Survey vertical AP 73 092 - 1203
<b>Field Interpretation:</b>	Outside study area, part of DRS NPRN 276091
	<b>Temporary ID number:</b> 99
<b>Initial Interpretation:</b>	<b>NPRN:</b> 0 TRACKWAY identified from Ordnance Survey vertical AP 73 092 - 1201

<b>Field Interpretation:</b>	Probably natural feature
	<b>Temporary ID number:</b> 100 <b>NPRN:</b> <b>0</b>
<b>Initial Interpretation:</b>	TRACKWAY identified from Ordnance Survey vertical AP 73 092 - 1201
<b>Field Interpretation:</b>	Probably natural feature
	<b>Temporary ID number:</b> 101 <b>NPRN:</b> <b>0</b>
<b>Initial Interpretation:</b>	TRACKWAY identified from Ordnance Survey vertical AP 73 092 - 1201
<b>Field Interpretation:</b>	Probably natural feature
	<b>Temporary ID number:</b> 102 <b>NPRN:</b> <b>0</b>
<b>Initial Interpretation:</b>	TRACKWAY identified from Ordnance Survey vertical AP 73 092 - 1201
<b>Field Interpretation:</b>	Probably natural feature
	<b>Temporary ID number:</b> 103 <b>NPRN:</b> <b>0</b>
<b>Initial Interpretation:</b>	TRACKWAY identified from Ordnance Survey vertical AP 73 092 - 1201
<b>Field Interpretation:</b>	Probably natural feature
	<b>Temporary ID number:</b> 104 <b>NPRN:</b> <b>0</b>
<b>Initial Interpretation:</b>	TRACKWAY identified from Ordnance Survey vertical AP 73 092 - 1201
<b>Field Interpretation:</b>	Probably natural feature
	<b>Temporary ID number:</b> 105 <b>NPRN:</b> <b>0</b>
<b>Initial Interpretation:</b>	TRACKWAY identified from Ordnance Survey vertical AP 73 092 - 1201
<b>Field Interpretation:</b>	Probably natural feature
	<b>Temporary ID number:</b> 106 <b>NPRN:</b> <b>0</b>
<b>Initial Interpretation:</b>	TRACKWAY identified from Ordnance Survey vertical AP 73 092 - 1201
<b>Field Interpretation:</b>	Probably natural feature
	<b>Temporary ID number:</b> 107 <b>NPRN:</b> <b>0</b>
<b>Initial Interpretation:</b>	TRACKWAY identified from Ordnance Survey vertical AP 73 092 - 1201
<b>Field Interpretation:</b>	Probably natural feature
	<b>Temporary ID number:</b> 108 <b>NPRN:</b> <b>0</b>
<b>Initial Interpretation:</b>	TRACKWAY identified from Ordnance Survey vertical AP 73 092 - 1201
<b>Field Interpretation:</b>	Probably natural feature
	<b>Temporary ID number:</b> 109 <b>NPRN:</b> <b>0</b>
<b>Initial Interpretation:</b>	TRACKWAY identified from Ordnance Survey vertical AP 73 092 - 1201

<b>Field Interpretation:</b>	Probably natural feature
	<b>Temporary ID number:</b> 110 <b>NPRN:</b> <b>0</b>
<b>Initial Interpretation:</b>	TRACKWAY identified from Ordnance Survey vertical AP 73 092 - 1201
<b>Field Interpretation:</b>	Probably natural feature
	<b>Temporary ID number:</b> 111 <b>NPRN:</b> <b>0</b>
<b>Initial Interpretation:</b>	TRACKWAY identified from Ordnance Survey vertical AP 73 092 - 1201
<b>Field Interpretation:</b>	Probably natural feature
	<b>Temporary ID number:</b> 112 <b>NPRN:</b> <b>0</b>
<b>Initial Interpretation:</b>	TRACKWAY identified from Ordnance Survey vertical AP 73 092 - 1201
<b>Field Interpretation:</b>	Probably natural feature
	<b>Temporary ID number:</b> 113 <b>NPRN:</b> <b>0</b>
<b>Initial Interpretation:</b>	TRACKWAY identified from Ordnance Survey vertical AP 73 092 - 1201
<b>Field Interpretation:</b>	Probably natural feature
	<b>Temporary ID number:</b> 114 <b>NPRN:</b> <b>0</b>
<b>Initial Interpretation:</b>	TRACKWAY identified from Ordnance Survey vertical AP 73 092 - 1201
<b>Field Interpretation:</b>	Probably natural feature
	<b>Temporary ID number:</b> 115 <b>NPRN:</b> <b>0</b>
<b>Initial Interpretation:</b>	TRACKWAY identified from Ordnance Survey vertical AP 73 092 - 1201
<b>Field Interpretation:</b>	Probably natural feature
	<b>Temporary ID number:</b> 116 <b>NPRN:</b> <b>0</b>
<b>Initial Interpretation:</b>	TRACKWAY identified from Ordnance Survey vertical AP 73 092 - 1201
<b>Field Interpretation:</b>	Probably natural feature
	<b>Temporary ID number:</b> 117 <b>NPRN:</b> <b>0</b>
<b>Initial Interpretation:</b>	TRACKWAY identified from Ordnance Survey vertical AP 73 092 - 1201
<b>Field Interpretation:</b>	Probably natural feature
	<b>Temporary ID number:</b> 118 <b>NPRN:</b> <b>0</b>
<b>Initial Interpretation:</b>	TRACKWAY identified from Ordnance Survey vertical AP 73 092 - 1201
<b>Field Interpretation:</b>	Probably natural feature
	<b>Temporary ID number:</b> 119 <b>NPRN:</b> <b>0</b>
<b>Initial Interpretation:</b>	TRACKWAY identified from Ordnance Survey vertical AP 73 092 - 1201

<b>Field Interpretation:</b>	Probably natural feature
	<b>Temporary ID number:</b> 120 <b>NPRN:</b> <b>0</b>
<b>Initial Interpretation:</b>	TRACKWAY identified from Ordnance Survey vertical AP 73 092 - 1201
<b>Field Interpretation:</b>	Probably natural feature
	<b>Temporary ID number:</b> 121 <b>NPRN:</b> <b>0</b>
<b>Initial Interpretation:</b>	TRACKWAY identified from Ordnance Survey vertical AP 73 092 - 1201
<b>Field Interpretation:</b>	Probably natural feature
	<b>Temporary ID number:</b> 122 <b>NPRN:</b> <b>0</b>
<b>Initial Interpretation:</b>	TRACKWAY identified from Ordnance Survey vertical AP 73 092 - 1201
<b>Field Interpretation:</b>	Probably natural feature
	<b>Temporary ID number:</b> 123 <b>NPRN:</b> <b>0</b>
<b>Initial Interpretation:</b>	TRACKWAY identified from Ordnance Survey vertical AP 73 092 - 1201
<b>Field Interpretation:</b>	Probably natural feature
	<b>Temporary ID number:</b> 124 <b>NPRN:</b> <b>0</b>
<b>Initial Interpretation:</b>	TRACKWAY identified from Ordnance Survey vertical AP 73 092 - 1201
<b>Field Interpretation:</b>	Probably natural feature
	<b>Temporary ID number:</b> 125 <b>NPRN:</b> <b>289235</b>
<b>Initial Interpretation:</b>	BANK identified from Ordnance Survey vertical AP 72 252 - 0451
<b>Field Interpretation:</b>	ENCLOSURE
	<b>Temporary ID number:</b> 126 <b>NPRN:</b> <b>289351</b>
<b>Initial Interpretation:</b>	BANK identified from Ordnance Survey vertical AP 72 252 - 0451
<b>Field Interpretation:</b>	FIELD BOUNDARY
	<b>Temporary ID number:</b> 127 <b>NPRN:</b> <b>0</b>
<b>Initial Interpretation:</b>	TRACKWAY identified from RAF vertical AP 106G/UK 836 - 4050
<b>Field Interpretation:</b>	Modern drainage feature
	<b>Temporary ID number:</b> 128 <b>NPRN:</b> <b>0</b>
<b>Initial Interpretation:</b>	TRACKWAY identified from RAF vertical AP 106G/UK 836 - 4050
<b>Field Interpretation:</b>	Modern drainage feature
	<b>Temporary ID number:</b> 129 <b>NPRN:</b> <b>289262</b>
<b>Initial Interpretation:</b>	BANK identified from Ordnance Survey vertical AP 73 092 - 1144

<b>Field Interpretation:</b>	BUILDING
	<b>Temporary ID number:</b> 130 <b>NPRN:</b> <b>289294</b>
<b>Initial Interpretation:</b>	BANK identified from Ordnance Survey vertical AP 73 092 - 1124
<b>Field Interpretation:</b>	ENCLOSURE
	<b>Temporary ID number:</b> 131 <b>NPRN:</b> <b>289290</b>
<b>Initial Interpretation:</b>	BANK identified from Ordnance Survey vertical AP 73 092 - 1124
<b>Field Interpretation:</b>	BANK
	<b>Temporary ID number:</b> 132 <b>NPRN:</b> <b>289290</b>
<b>Initial Interpretation:</b>	BANK identified from Ordnance Survey vertical AP 73 092 - 1124
<b>Field Interpretation:</b>	BANK
	<b>Temporary ID number:</b> 133 <b>NPRN:</b> <b>0</b>
<b>Initial Interpretation:</b>	TRACKWAY identified from RAF vertical AP CPE/UK1873 - 6208
<b>Field Interpretation:</b>	Not seen during fieldwork
	<b>Temporary ID number:</b> 134 <b>NPRN:</b> <b>0</b>
<b>Initial Interpretation:</b>	BANK identified from RAF vertical AP CPE/UK1873 - 6208
<b>Field Interpretation:</b>	Not seen during fieldwork
	<b>Temporary ID number:</b> 135 <b>NPRN:</b> <b>0</b>
<b>Initial Interpretation:</b>	BANK identified from RAF vertical AP CPE/UK1873 - 6208
<b>Field Interpretation:</b>	Not seen during fieldwork
	<b>Temporary ID number:</b> 136 <b>NPRN:</b> <b>0</b>
<b>Initial Interpretation:</b>	BANK identified from RAF vertical AP CPE/UK1873 - 6208
<b>Field Interpretation:</b>	Not seen during fieldwork
	<b>Temporary ID number:</b> 137 <b>NPRN:</b> <b>0</b>
<b>Initial Interpretation:</b>	BANK identified from RAF vertical AP CPE/UK1873 - 6208
<b>Field Interpretation:</b>	Not seen during fieldwork
	<b>Temporary ID number:</b> 138 <b>NPRN:</b> <b>0</b>
<b>Initial Interpretation:</b>	TRACKWAY identified from RAF vertical AP CPE/UK1873 - 6208
<b>Field Interpretation:</b>	Trackway shown on 1st edition Ordnance Survey map
	<b>Temporary ID number:</b> 139 <b>NPRN:</b> <b>0</b>
<b>Initial Interpretation:</b>	TRACKWAY identified from RAF vertical AP CPE/UK1873 - 6208

<b>Field Interpretation:</b>	Not seen during fieldwork
	<b>Temporary ID number:</b> 140
	<b>NPRN:</b> 0
<b>Initial Interpretation:</b>	TRACKWAY identified from RAF vertical AP CPE/UK1873 - 6208
<b>Field Interpretation:</b>	Modern trackway
	<b>Temporary ID number:</b> 141
	<b>NPRN:</b> 0
<b>Initial Interpretation:</b>	TRACKWAY identified from RAF vertical AP CPE/UK1873 - 6208
<b>Field Interpretation:</b>	Modern trackway
	<b>Temporary ID number:</b> 142
	<b>NPRN:</b> 0
<b>Initial Interpretation:</b>	TRACKWAY identified from RAF vertical AP CPE/UK1873 - 6208
<b>Field Interpretation:</b>	Modern trackway
	<b>Temporary ID number:</b> 143
	<b>NPRN:</b> 0
<b>Initial Interpretation:</b>	TRACKWAY identified from RAF vertical AP CPE/UK1873 - 6208
<b>Field Interpretation:</b>	Modern trackway
	<b>Temporary ID number:</b> 144
	<b>NPRN:</b> 0
<b>Initial Interpretation:</b>	TRACKWAY identified from RAF vertical AP CPE/UK1873 - 6208
<b>Field Interpretation:</b>	Modern trackway
	<b>Temporary ID number:</b> 145
	<b>NPRN:</b> 0
<b>Initial Interpretation:</b>	TRACKWAY identified from RAF vertical AP CPE/UK1873 - 6208
<b>Field Interpretation:</b>	Natural gully
	<b>Temporary ID number:</b> 146
	<b>NPRN:</b> 0
<b>Initial Interpretation:</b>	TRACKWAY identified from RAF vertical AP CPE/UK1873 - 6208
<b>Field Interpretation:</b>	Natural gully
	<b>Temporary ID number:</b> 147
	<b>NPRN:</b> 0
<b>Initial Interpretation:</b>	TRACKWAY identified from RAF vertical AP CPE/UK1873 - 6208
<b>Field Interpretation:</b>	Natural gully
	<b>Temporary ID number:</b> 148
	<b>NPRN:</b> 0
<b>Initial Interpretation:</b>	TRACKWAY identified from RAF vertical AP CPE/UK1873 - 6208
<b>Field Interpretation:</b>	Natural gully
	<b>Temporary ID number:</b> 149
	<b>NPRN:</b> 0
<b>Initial Interpretation:</b>	TRACKWAY identified from RAF vertical AP CPE/UK1873 - 6208



<b>Field Interpretation:</b>	Natural gully
	<b>Temporary ID number:</b> 150
	<b>NPRN:</b> 0
<b>Initial Interpretation:</b>	TRACKWAY identified from RAF vertical AP CPE/UK1873 - 6208
<b>Field Interpretation:</b>	Not seen during fieldwork
	<b>Temporary ID number:</b> 151
	<b>NPRN:</b> 289352
<b>Initial Interpretation:</b>	TRACKWAY identified from Ordnance Survey vertical AP 00 930 - 0527
<b>Field Interpretation:</b>	TRACKWAY
	<b>Temporary ID number:</b> 152
	<b>NPRN:</b> 0
<b>Initial Interpretation:</b>	TRACKWAY identified from Ordnance Survey vertical AP 00 930 - 0527
<b>Field Interpretation:</b>	Modern feature
	<b>Temporary ID number:</b> 153
	<b>NPRN:</b> 289198
<b>Initial Interpretation:</b>	BANK identified from Ordnance Survey vertical AP 00 930 - 0527
<b>Field Interpretation:</b>	BANK
	<b>Temporary ID number:</b> 154
	<b>NPRN:</b> 289346
<b>Initial Interpretation:</b>	TRACKWAY identified from Ordnance Survey vertical AP 00 930 - 0527
<b>Field Interpretation:</b>	TRACKWAY on Colva Hill
	<b>Temporary ID number:</b> 155
	<b>NPRN:</b> 0
<b>Initial Interpretation:</b>	TRACKWAY identified from Ordnance Survey vertical AP 75 072 - 0157
<b>Field Interpretation:</b>	Modern trackway
	<b>Temporary ID number:</b> 156
	<b>NPRN:</b> 0
<b>Initial Interpretation:</b>	LEAT identified from Ordnance Survey vertical AP 00 930 - 0527
<b>Field Interpretation:</b>	Feature recorded as a leat by RCAHMW (NPRN 40304) but only feature visible on the ground was a trackway running downslope.