



Plate 1 *above*: Workhouse viewed from the southwest

Plate 2 *below*: Llesty frontage, view from the north towards the 1884 Chapel, the 1902 building and the main block of Holywell Union Workhouse built 1838-40.





Plate 3 above: Holywell Union Workhouse façade built 1838-40 and the 1902 Nurses' Residence on the right. View from the northeast

Plate 4 below: Workhouse entrance





Plate 5 below: 1902 Extension, Nurses' Residence, classical facade

Plate 6 below left: Classical façade, view from north



Plate 7 below right: Buttress detail





Plate 8 left: 1902 open pedimented porch



Plate 9 right: 1902 rear window detail

Plate 10 below: 1902 Rear elevation of Nurses' Residence, view across Chapel Yard





Plate 11 *above*: View across Chapel Yard towards the rear of the Nurses' Residence and the 1884 Chapel

Plate 12 *below*: Entrance off Brynford Road into Chapel Yard





Plate 13 above: View from the north across Chapel Yard

Plate 14 below: East elevation of the north wing of the workhouse, viewed from Chapel Yard





Plate 15 *above*: Cross wing of the north wing of the workhouse, view from the north

Plate 16 *below*: Cross wing, as above, view from the west from the northwest yard, known as the Bell Yard





Plate 17 above: West elevation of the Workhouse north wing, view across the Bell Yard

Plate 18 below: Bell Yard and the north elevation of the west wing





Plate 19 above: Cross wing of the Workhouse west wing, north and west elevation

Plate 20 below: As above, south and west elevation with modern buildings and chimney in the background





Plate 21 *above*: Workhouse West and South wings extending from the central octagon

Plate 22 *below*: Central Octagon





Plate 23 above: Toilet / bathroom addition to the west elevation of the Workhouse south wing

Plate 24 below: Cross wing of the Workhouse south wing





Plate 25 above: Workhouse viewed from the south

Plate 26 below: View over the Pump Yard towards the east wing that connects the Octagon to the Administration Block





Plate 27 above: Pump Yard, viewed from the north towards the single storey building with Pump outside

Plate 28 below left: Cast iron pump



Plate 29 below right: South cross wing east elevation from Pump Yard





Plate 30 *above*: East elevation of the Workhouse south wing extending south from the Octagon

Plate 31 *below*: Pump Yard with lean-to additions to the ‘curtain wall’ that fronts Old Chester Road





Plate 32 above: View across Old Chester Road towards the hospital works department, part of the former Vagrants' Wards complex

Plate 33 left: Workshop entrance



Plate 34 right: Workshop door





Plate 35 *above*: Former hospital Pharmacy building, previously the Assistant Master's House

Plate 36 *below*: Enclosing east wall of the Pump Yard, connecting the main Administration Block to the Assistant Master's House





Plate 37: The 1884 Chapel designed by John Douglas, west elevation



Plate 38 above: Chapel east elevation

Plate 39 below left: Chapel east window



Plate 40 below right: Chapel south door





Plate 41 above: Chapel Yard Pump



Plate 42 above: Workhouse window sample

Plate 43 below: View from the southwest towards the modern additions to the Workhouse





Plate 44 above: The 1838-40 Workhouse Administration Block, entrance hall

Plate 45 right:
Fanlight lattice
detail



Plate 46 below: Entrance Hall north doors





Plate 47: Main hall panelled door to front office



Plate 48: Admin, panelled door

Plate 49 below: Front office fireplace



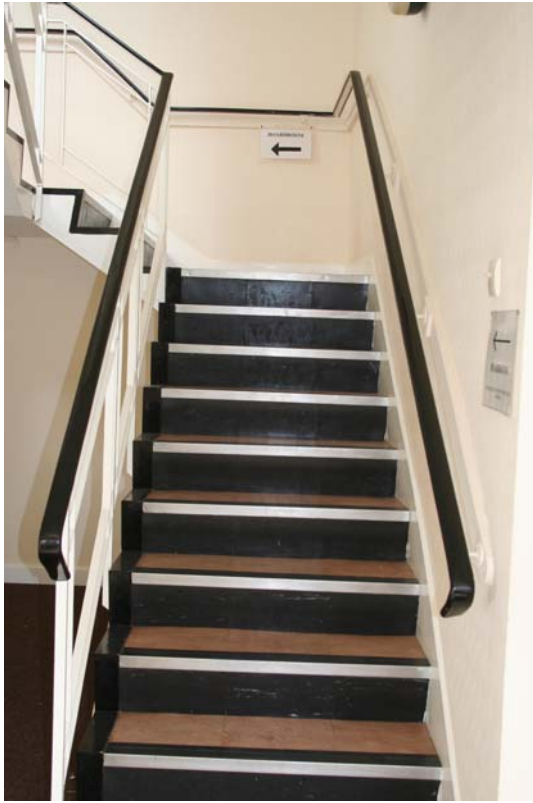


Plate 50: Admin. ground to first floor staircase



Plate 51: First floor corridor from Admin. to the Octagon

Plate 52 below: Workhouse, small room sample





Plate 53 above: Ward 6B, Workhouse second floor, view from the east

Plate 54 below: Ward 6A, Workhouse second floor, view from the south





**Plate 55: Workhouse first floor,
door sample**



**Plate 56: Ward 6B, second floor,
former fireplace**



**Plate 57:
Towel rail fitting**



**Plate 58:
Radiator sample**



Plate 59 above: Octagon top / third floor; handrail at top of wooden dog-leg steps

Plate 60 below: Octagon third floor water tanks, view from south





Plate 61: Octagon third floor southwest door



Plate 62: Workhouse north wing, ground floor

Plate 63: Workhouse north wing



Plate 64: Workhouse flat staircase





Plate 65 & Plate 66 *above*: Stone steps rear of Workhouse Admin. Block

Plate 67: Rear entrance to Nurses' Residence



Plate 68: Nurses' Residence door sample





Plate 70 left:

Nurses' Residence staircase

Plate 71 below: Side elevation





Plate 72 above: Nurses' Residence function room, view from the south

Plate 73 below: as above, view from the north



1913 Infirmary



Plate 74 above: Infirmary viewed from Old Chester Road

Plate 75 below: Central Block with 1913 datestone





Plate 76 above: Front / west elevation, view from the northwest

Plate 77: North side Octagonal Bay



Plate 78: Front / west entrance





Plate 79 above: North elevation

Plate 80 below: South elevation





Plate 81 left: Foundation stone



**Plate 82 left:
1913 date stone**

Plate 83 below: Infirmary viewed from the northeast





Plate 84 & Plate 85 above: Staircase from ground to first floor

Plate 86: First floor corridor



Plate 87: First floor door





Plate 88: First floor room



Plate 89: Second floor corridor

Plate 90: Second floor roof access



Plate 91: First floor lift access





Plate 92 *above*: First floor north ward

Plate 93 *below*: First floor south ward





Plate 94 left:

**First floor partition between main ward
and the single ward in the octagonal bay**

Plate 95 below: Towel rail sample



Plate 96 below: Single storey building / stores located south of the Infirmary





Plate 97 above: Single storey building / stores located northwest of the Infirmary



Plate 98 above: Rising land to the west of the Workhouse, included in development proposals.
View from the southeast



Plate 99 left:
View from the northeast



Plate 100 above: View down Brynford Road towards the Tank recorded on Fig. 1.
The earthworks on the right are the remains of spoil tips resulting from leadmining

Plate 101 below: Spoil tips viewed from the northeast

