

Materials & Finishes:-

ROOF ELEMENTS
Main pitched roof structure comprises large timber trusses partially exposed below decorative timber boarded ceiling internally.
Pitched roofs with roof louvers & painted timber louvers & lead covered pyramidal roof
Pitched roof with clay ridge tiles, colour buff on natural roof slate, colour grey
Lead lined gutters and flashings and stepped parapet lead lined gutters
Rear flat roof in 3 No layers felt & bit upstands and lead cover flashings with parapet rear upstand

EXTERNAL WALLS:-
Dressed bathstone and bathstone feature embellishments & full height bathstone corner arched piers with full bathstone main front entrance facade.
Bathstone feature surrounds to windows and doors with bathstone mullions and transoms to main gable end windows to East & West wings
Bathstone gable and parapet copings with bathstone horizontal leads at window heads and eaves and deep bathstone prints
Pendant dressed and coursed stone infill between windows and bathstone banding/ surrounds

CILLS:-
Bathstone

WINDOWS:-
Lead lined lights with opening vents and painted timber sashes to the part rear elevation
ROOF & SKYLIGHTS:-
UPVC skylights at flat roof level with Georgian wired glass fixed lights.
Pitched roof light inset to pitched roofs in aluminium with Georgian wired glass

DOORS:-
Front door in stained solid timber, inner lobby doors in painted timber with decorative half glazing, diamond inset motifs and lower recessed panels; colour red.
Side elevation door in solid painted timber with recessed panels & stained glass fanlight over
Internal doors in solid painted timber with recessed panels

RAINWATER GOODS:-
Cast iron and cast aluminium replacement outlets, hoppers, RWDP's with protective Galv. steel covers on rear elevations

EXTERNAL WORKS:-
Existing (1 in 9) gradient ramp; stained timber handrail on painted galvanised steel upright supports; colour green, ramp surface finish in exposed concrete aggregate with intermediate bands of inset pavers
Pendant stone boundary walls with Forest of Dean copings with galvanised steel railings; colour green

General Notes:-

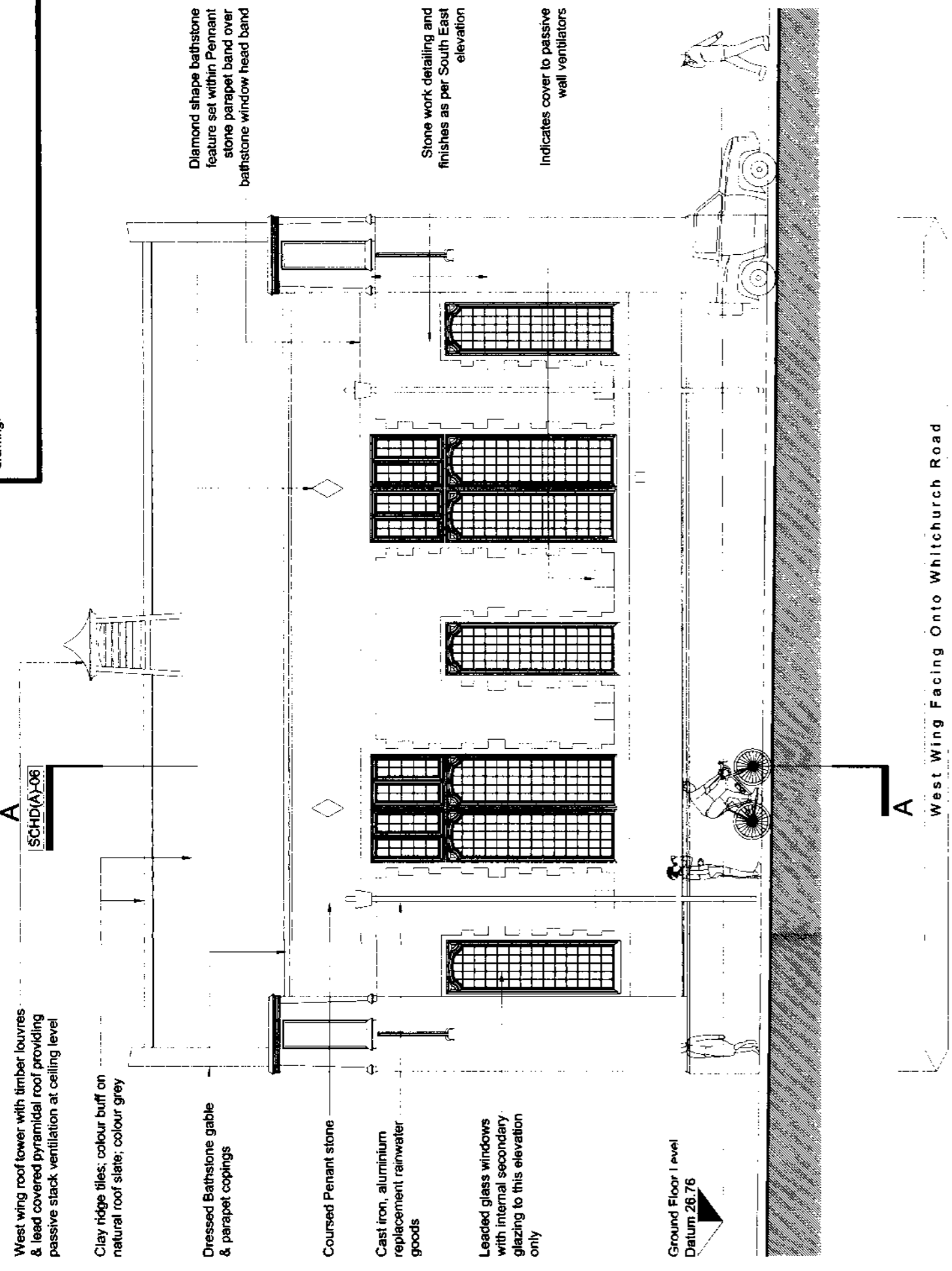
This drawing is to be read in conjunction with drawing number references SCHD(A)01 to SCHD(A)10 and external landscape drawings Ref CAT.08.01.01 & 02

West wing roof lower with timber louvers & lead covered pyramidal roof providing passive stack ventilation at ceiling level
Clay ridge tiles, colour buff on natural roof slate, colour grey

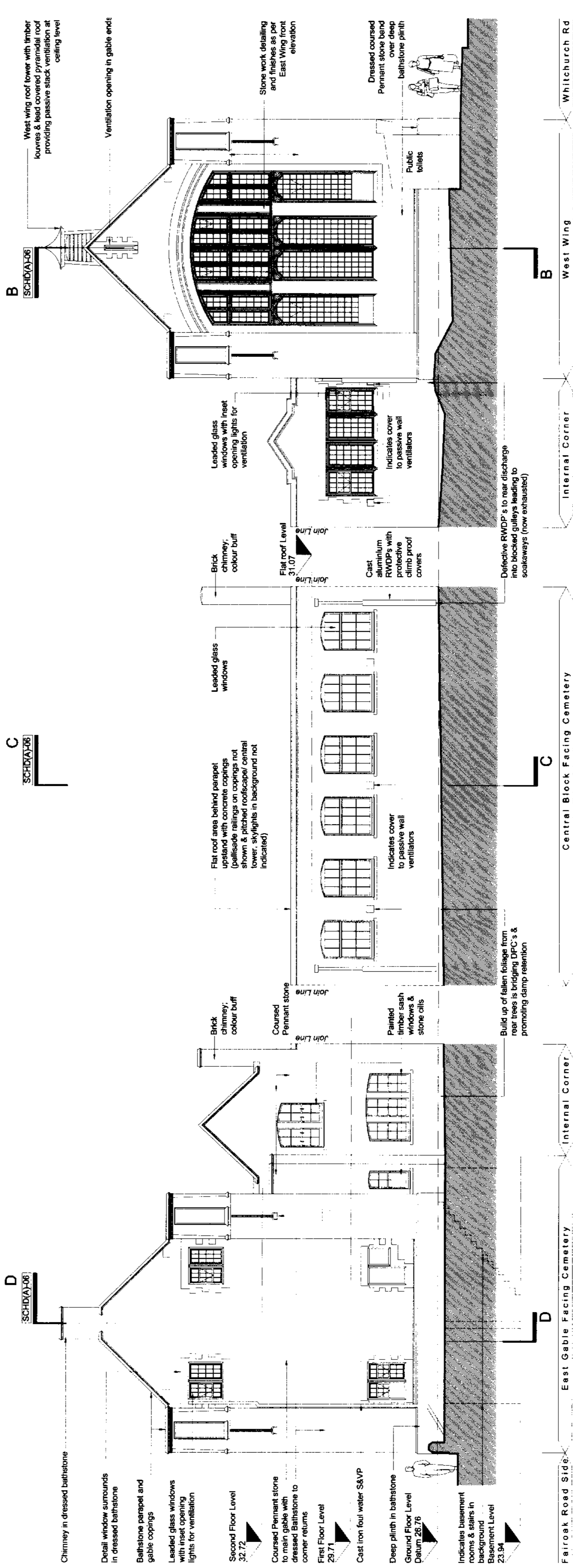
Dressed bathstone gable & parapet copings
Coursed Pennant stone
Cast iron, aluminium replacement rainwater goods
Lead lined glass windows with inset opening lights for ventilation
Dressed bathstone & bathstone detailing to corner returns & window surrounds
Dressed coursed Pennant stone with between window bathstone sill band
Dressed, coursed Pennant stone band over deep bathstone plinth
Ground Floor Level Datum: 26.76

Important Note

Physical dimensions where shown should be used in all circumstances. DO NOT scale from drawings. Electronic files must be checked against hierarchy of the drawing



South West (Side) Elevation As Existing



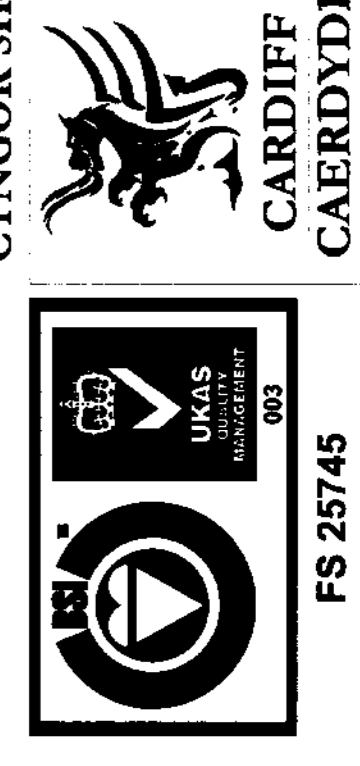
South (Front) 'Unrolled' Elevation As Existing

North (Rear) 'Unrolled' Elevation As Existing

South East (Side) Elevation As Existing

CLPC 6510 - CATHAYS LIBRARY - SCHD(A)05 Rev B - SCHEME DESIGN

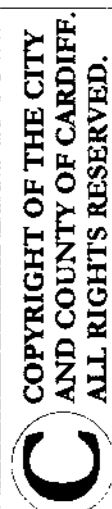
amendments (note :- all amendments to be signed)
Revision: A - 16-11-08 CJC
Project Number amended from CLPC 623 to CLPC 6510
Revision: B - 19-12-08 CJC
Window annotation denoted. Notes added and graphic updated



CYNGOR SIR DINAS A SIR CAERDYDD
PROJECTS DESIGN & DEVELOPMENT DESIGN AND CONSTRUCTION MANAGEMENT
PROJECT LEADERS: RHEOLAETH CYWLLINGO AC ADEBLADU
David Young
DESIGN AND CONSTRUCTION MANAGER
RHEOLAETH CYWLLINGO AC ADEBLADU

THE COUNTY COUNCIL OF THE CITY & COUNTY OF CARDIFF
CATHAYS LIBRARY REFURBISHMENT
SCHEME DESIGN STAGE- EXISTING ELEVATIONS
Project No: CLPC 6510
Drawing number: SCHD(A)05
Date: Oct 2008
Action By: [Signature]

REGULATORY SERVICES
- 2 JAN 2008
Action By: [Signature]



COPYRIGHT OF THE CITY AND COUNTY OF CARDIFF. ALL RIGHTS RESERVED.

FS 25745

Telephone 029 2078 8235 - Fax: 029 2078 8229