

CPAT Report No. 1638

# The Coach House, Maenol, Llanidloes




BUILDING SURVEY



YMDDIRIEDOLAETH ARCHAEOLEGOL CLWYD-POWYS

CLWYD-POWYS ARCHAEOLOGICAL TRUST

Client name: Chameleon Services (UK) Ltd  
 CPAT Project No: 2346  
 Project Name: The Coach House, Maenol, Llanidloes  
 Grid Reference: SN 95248 83675  
 County/LPA: Powys  
 Planning Application: P/2017/1446  
 CPAT Report No: 1638  
 Event PRN: 140279  
 Report status: Final  
 Confidential until: N/A

Prepared by:	Checked by:	Approved by:
		
Sophie Watson Project Archaeologist	Nigel Jones Principal Archaeologist	Nigel Jones Principal Archaeologist
4 <sup>th</sup> February 2019	5 <sup>th</sup> February 2019	5 <sup>th</sup> February 2019

Bibliographic reference: Watson, S. E., 2019. *The Coach House, Maenol, Llanidloes, Powys: Building Survey*. Unpublished report. CPAT Report No. 1638.



YMDDIRIEDOLAETH ARCHAEOLEGOL CLWYD-POWYS  
 CLWYD-POWYS ARCHAEOLOGICAL TRUST

41 Broad Street, Welshpool, Powys, SY21 7RR, United Kingdom

+44 (0) 1938 553 670

[trust@cpat.org.uk](mailto:trust@cpat.org.uk)

[www.cpat.org.uk](http://www.cpat.org.uk)

©CPAT 2019



The Clwyd-Powys Archaeological Trust is a Registered Organisation  
 with the Chartered Institute for Archaeologists

# CONTENTS

<b>SUMMARY .....</b>	<b>ii</b>
<b>1 INTRODUCTION .....</b>	<b>3</b>
<b>2 LEVEL I BUILDING SURVEY.....</b>	<b>4</b>
<b>3 CONCLUSIONS .....</b>	<b>7</b>
<b>4 SOURCES .....</b>	<b>7</b>
<b>5 ARCHIVE DEPOSITION STATEMENT .....</b>	<b>8</b>
<b>6 APPENDIX.....</b>	<b>8</b>

## **Summary**

In February 2019 the Clwyd-Powys Archaeological Trust conducted a survey to record a former Coach House at Maenol, Llanidloes, in Powys, as a condition of planning consent for the conversion of the building to domestic accommodation. Maenol lies along the B4518 on the outskirts of Llanidloes. The survey provided a detailed photographic record of the surviving Coach House building which dates from 1833.

## **Crynodeb**

Ym mis Chwefror 2019, bu Ymddiriedolaeth Archaeolegol Clwyd-Powys yn cynnal arolwg i gofnodi cyn goetsiws ym Maenol, Llanidloes, ym Mhowys, fel amod o ganiatâd cynllunio i drosi'r adeilad yn llety domestig. Mae Maenol ar hyd y ffordd B4518 ar gyrion Llanidloes. Darparodd yr arolwg gofnod ffotograffig manwl o adeilad y Coetsiws sydd wedi goroesi ac sy'n dyddio o 1833.

# 1 Introduction

- 1.1. This report describes the results of a Level I building survey conducted by the Clwyd-Powys Archaeological Trust (CPAT) to record the Coach House at Maenol, Llanidloes. The building is listed (Grade II: 8315) and 'included for group value with Maenol', which is also Grade II listed.
- 1.2. The building survey was carried out on the 4<sup>th</sup> February 2019 and was required as a condition attached to the planning permission to convert the Coach Room and Store into additional living accommodation by Powys County Council (Application P/2017/1446).
- 1.3. The Coach House is located within the grounds of Maenol, located off the B4518 road into Llanidloes (Fig. 1; SN 95248 83675).



Contains Ordnance Survey data © Crown copyright and database right 2018

Fig. 1 Location of Maenol Coach House



- 
- 2.6. The roof has recently been renewed with planning consent, but is known to have originally been slated.
- 2.7. To the exterior, above the cart doors is a small attic gable with a lancet window. The date stone of 1833 is immediately below and a Salop Fire Office insurance plaque below that (CPAT image 4592-0006). Prior to the introduction of the Penny Postal System in 1840, the naming of Streets and numbering of houses was rather haphazard. To enable insurance companies to identify properties which they insured, metal plates or firemarks were issued with insurance policies to be securely fixed onto the front of a property in a prominent position. Fires were attended by the Fire Insurance Companies and the plaques allowed them to easily identify properties within a certain fire company's care. The Salop Fire Office fire mark displays three leopard heads, which is taken from the arms of Shrewsbury.
- 2.8. A further link to Shropshire evident in the buildings construction is the use of Coalbrookdale cast iron drain pipes at either side of the building (CPAT image 4592-0041).
- 2.9. All of the original openings are surrounded by chamfered bricks with segmental arches above and chamfered sandstone sills. The two gabled facades each house a single window to the ground and first floors – that to the south-west housing a paired sash window at ground floor level, of which there is similar within the north-east elevation. The remaining windows are mainly casement, those to the south-west elevation appearing to have been inserted at a later date.
- 2.10. The coach store is accessed from the yard via a segmental arched coach entrance surrounded by chamfered bricks and herringbone boarded doors. The original cobbled floor surface is still visible within the coach store and extends to form a large cobbled yard out front with a pathway marked within the cobbles leading directly from the coach store towards the main house (CPAT image 4592-0045). It is intended the cobbled floor within the coach store will be lifted during refurbishment to allow for the insertion of under floor heating and then re-laid.
- 2.11. None of the upper flooring to the coach store is surviving, though the remnants of joists are visible within the brick elevations. There is a small blocked opening within the upper part of the north-eastern dividing wall and a doorway in the south-western wall providing access to the upper floor above the south-western gabled range.
- 2.12. To the rear, the north-east and central wall are of rubble stone blocks, whereas the south-eastern gable is of finer, horizontally laid slate rubble with four ventilation slits dressed with red brick and a single doorway to the first floor, also dressed with red brick. There is a small opening to the ground floor.
- 2.13. Although undoubtedly part of the building as a whole, this side of the building is shown on the early mapping as a separate structure, which perhaps explains the difference in the building materials employed in its construction.
- 2.14. The rear wall of the coach store houses two ventilation slits within the upper walling, dressed with red brick and to the north-eastern gable the remnants of two ventilation slits to the ground floor, although these have been obscured by a later brick extension

to the rear to house a toilet. A later window is visible beside the remaining walls of the extension and a tall window to the first floor.



Figure 3. The rear of the Coach House showing the difference in building stone utilised in each gable. CPAT image 4592-0015.

- 2.15. The north-eastern gabled wing has been converted sometime in the recent past for domestic use, and the original front entrance alongside the coach store entrance has been blocked from the inside (CPAT images 4592-0020/35). The ground floor room is accessed via a doorway within the north-east elevation and is open-plan providing living space/fireplace and a small kitchen. There is a paired sash window to the left of the door to the ground floor and a small casement window directly above to the first floors. A later window has been inserted at ground floor level to the right of the doorway.
- 2.16. Inside, stairs up to the first floor provide access to two small bedrooms and a red brick chimney stack has been inserted internally alongside the south-east gable.
- 2.17. The south-western gabled wing is accessed via a large single doorway in the north-eastern elevation (CPAT image 4592-0021). The floor is tiled with red quarry tiles and the walls are covered by a red brick skin, which has been whitewashed in the ground floor room.
- 2.18. The room is now open to the rafters although evidence of a former floor above is visible in the elevations and the central beam to support the joists remains in situ. It is likely this side of the building was utilised as a stable with a hayloft above which was accessible via the doorway in the south-eastern gable, with further access provided into the space above the cart store within the north-eastern dividing wall.



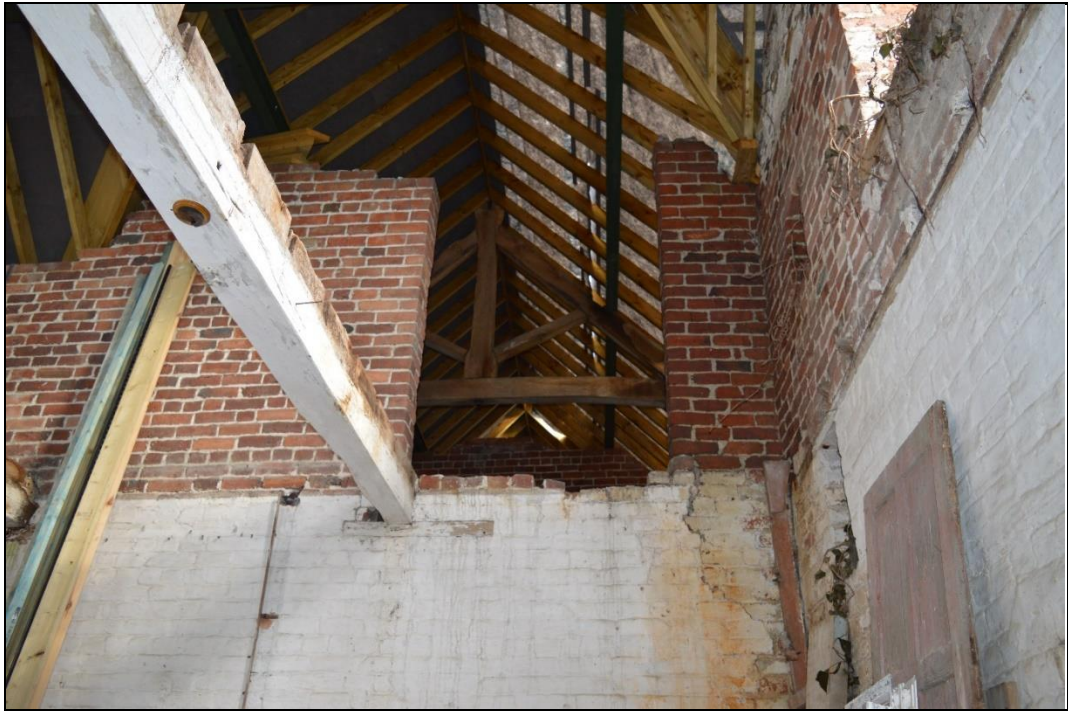


Figure 4. Internal view of the south-western gabled wing (north-eastern dividing wall).

### 3 Conclusions

- 3.1. Given the later reuse of the building, it is difficult to determine with certainty the original function and layout of the various elements of the coach house, although it appears likely that the intended use was for a central coach store with stables/tack rooms to either side with hay loft above. The building retains a number of interesting original features both in its surviving structural features such as the window dressings and the cobbled coach store floor and associated yard surface, which the owner is keen to retain. There are also some original sash windows, which will be used as a model during the refurbishments. A number of features linking the building to Shropshire also survive, including the fire plaque and the Coalbrookdale drain pipes.

### 4 Sources

#### *Cartographic Sources*

1840 Tithe Map: The townships of Brithdir, Treflin, Hengynwith Fach and Kilmachallt in the parish of Llanidloes in the County of Montgomery.

1887 Ordnance Survey 1:2500 1<sup>st</sup> edition Montgomeryshire 47.04

1902 Ordnance Survey 1:2500 1<sup>st</sup> edition Montgomeryshire 47.04

---

## 5 Archive deposition Statement

- 5.1. The project archive has been prepared according to the CPAT Archive Policy and in line with the CIfA *Standard and guidance for the creation, compilation, transfer and deposition of archaeological archives guidance* (2014). A digital copy of the final report and photographs only will be deposited with the Historic Environment Record, Clwyd-Powys Archaeological Trust and the Royal Commission on the Ancient and Historical Monuments of Wales.

### Archive summary

CPAT Event PRN: 140279

53 digital photographs, CPAT film no 4592

1 A3 plan (based on existing) showing location of survey photographs

## 6 Appendix

- 6.1. Catalogue of images

4592-0001 – Exterior: Coach House façade. View from north-west.

4592-0002 – Exterior: Coach House façade. View from north.

4592-0003 – Exterior: Coach House façade. View from north-west.

4592-0004 – Exterior: Coach House façade. View from north-west.

4592-0005 – Exterior: Coach House façade close up. View from north-west.

4592-0006 – Exterior: Coach House date stone and Salop insurance plaque. View from north-west.

4592-0007 – Exterior: Ground floor double sash window. View from north-west.

4592-0008 – Exterior: Windows in south-west gable. View from north-west.

4592-0009 – Exterior: View from south-west.

4592-0010 – Exterior: View from south-west.

4592-0011 – General view of Maenol. Viewed from the south.

4592-0012 – Exterior: View from south-east.

4592-0013 – Exterior: View from south-east.

4592-0014 – Exterior: View from south-east.

4592-0015 – Exterior: View from south-east.

4592-0016 – Exterior: View from east.

- 
- 4592-0017 – Exterior: View from east.
- 4592-0018 – Exterior: View from east.
- 4592-0019 – Exterior: View from north-east.
- 4592-0020 – Exterior: Ground floor doorway. View from south-west.
- 4592-0021 – Exterior: Ground floor doorway. View from north-east.
- 4592-0022 – Interior: Ground floor (southern side): View from north.
- 4592-0023 – Interior: Ground floor (southern side): View from north.
- 4592-0024 – Interior: Ground floor (southern side): View from north.
- 4592-0025 – Interior: Ground floor (southern side): View from south-east.
- 4592-0026 – Interior: Ground floor (southern side): View from south-west.
- 4592-0027 – Interior: Ground floor (coach room): View from north-west.
- 4592-0028 – Interior: Ground floor (coach room): View from north-east.
- 4592-0029 – Interior: Ground floor (coach room): View from north-east.
- 4592-0030 – Interior: Ground floor (coach room): View from south-west.
- 4592-0031 – Interior: Coach room doorway: View from south-east.
- 4592-0032 – Interior: Coach room stone cobble floor: View from south-east.
- 4592-0033 – Interior: Coach room stone cobble floor: View from south-east.
- 4592-0034 – Interior: Ground floor living space (northern side). View from north-west.
- 4592-0035 – Interior: Ground floor living space (northern side). Blocked doorway. View from north-east.
- 4592-0036 – Interior: First floor living space (northern side). View from north.
- 4592-0037 – Interior: First floor living space (northern side). Window. View from south.
- 4592-0038 – Interior: First floor living space (northern side). View from north-west.
- 4592-0039 – Exterior: View from south.
- 4592-0040 – Exterior: Coaalkbrookdale cast iron drain-pipe. View from south-west.
- 4592-0041 – Exterior: Coaalkbrookdale cast iron drain-pipe. View from south-west.

- 
- 4592-0042 – Exterior: Window to gable (north side). View from north-west.
- 4592-0043 – Exterior: General view of the Maenol buildings. View from north.
- 4592-0044 – Exterior: General view of the Coach House and yard surface. View from north-west.
- 4592-0045 – Exterior: General view of the Coach House and yard surface. View from north-west.
- 4592-0046 – Exterior: Date stone detail. View from south.
- 4592-0047 – Exterior: General view of the Coach House yard surface. View from south-east.
- 4592-0048 – Exterior: drain at rear of coach room. View from west.
- 4592-0049 – Exterior: Rear of northern side gable. View from south-east.
- 4592-0050 – Exterior: ground floor double sash window to north-west elevation. View from north-east.
- 4592-0051 – Interior: Coach room doorway: View from south-east.
- 4592-0052 – Interior: Coach room dividing wall: View from south-west.
- 4592-0053 – Exterior: Coach room doorway. View from north.



4592-0001.JPG



4592-0002.JPG



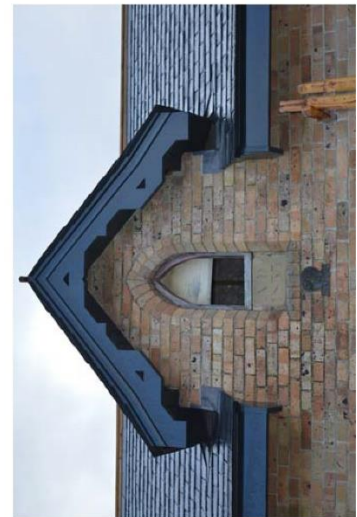
4592-0003.JPG



4592-0004.JPG



4592-0005.JPG



4592-0006.JPG



4592-0007.JPG



4592-0008.JPG



4592-0009.JPG



4592-0010.JPG



4592-0011.JPG



4592-0012.JPG



4592-0013.JPG



4592-0014.JPG



4592-0015.JPG



4592-0016.JPG



4592-0017.JPG



4592-0018.JPG



4592-0019.JPG



4592-0020.JPG



4592-0021.JPG



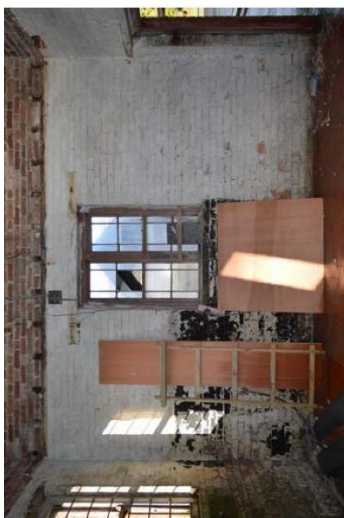
4592-0022.JPG



4592-0023.JPG



4592-0024.JPG



4592-0025.JPG



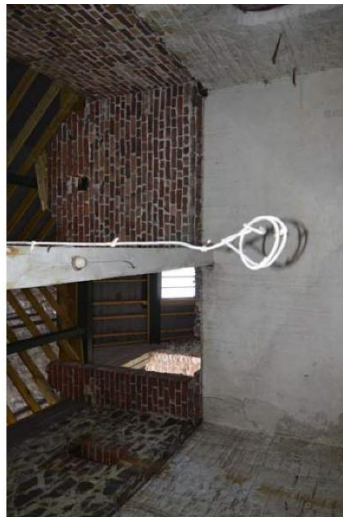
4592-0026.JPG



4592-0027.JPG



4592-0028.JPG



4592-0029.JPG



4592-0030.JPG



4592-0031.JPG



4592-0032.JPG



4592-0033.JPG



4592-0034.JPG



4592-0035.JPG



4592-0036.JPG





4592-0037.JPG



4592-0038.JPG



4592-0039.JPG



4592-0040.JPG



4592-0041.JPG



4592-0042.JPG



4592-0043.JPG



4592-0044.JPG



4592-0045.JPG



4592-0046.JPG



4592-0047.JPG



4592-0048.JPG



4592-0049.JPG



4592-0050.JPG



4592-0051.JPG



4592-0052.JPG



4592-0053.JPG

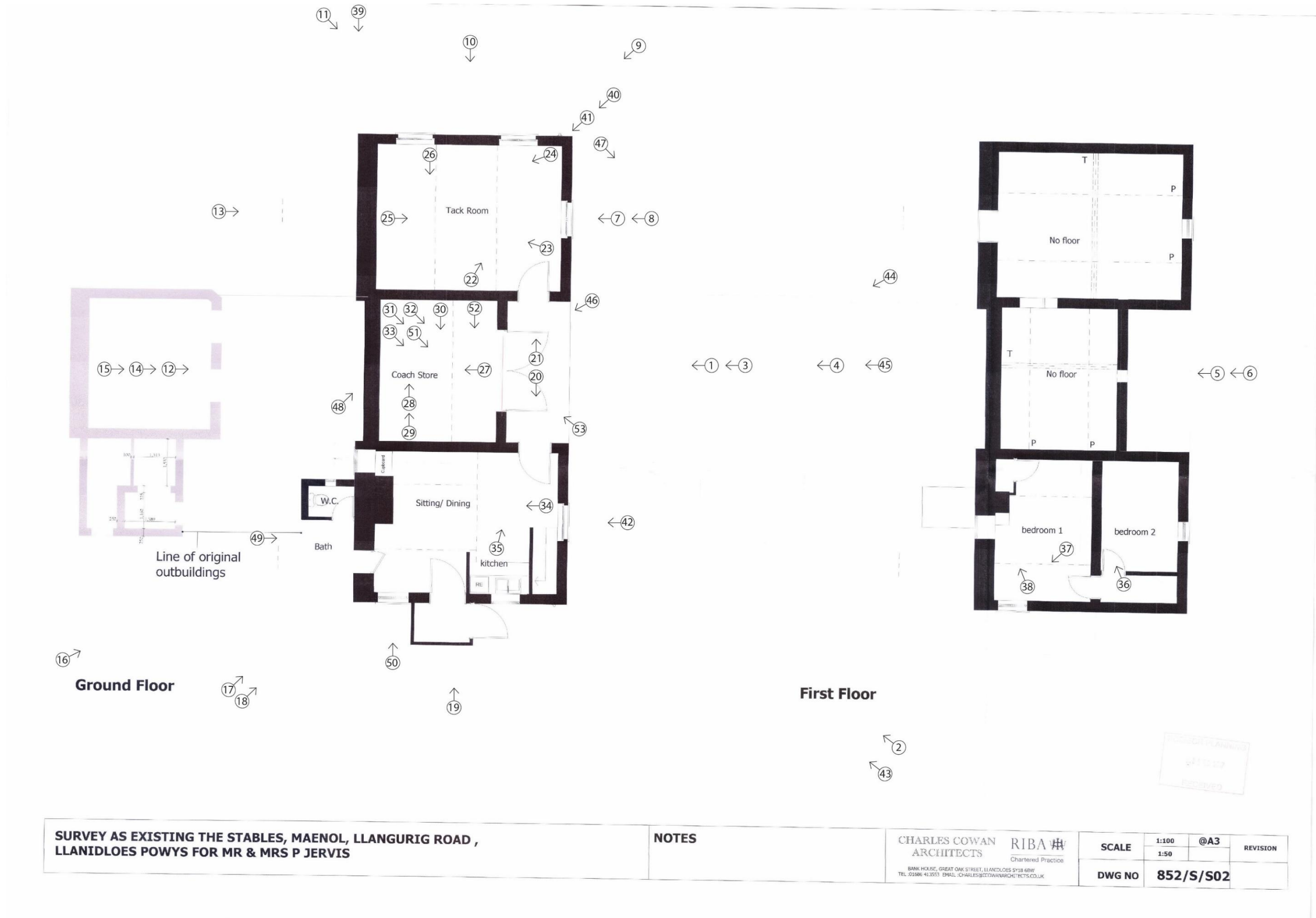


Figure 5. Plan (based on existing) showing location of survey photographs.