

**Capel Annibynnol Brynteg
Brynteg Independent Chapel,
Gorseinon, Swansea
Photographic Survey
P/2015/0026 (Swansea)**



Report by: Trysor

For: Mr Ian Powell

September 2017



**Capel Annibynnol Brynteg
Brynteg Independent Chapel,
Gorseinon, Swansea
Photographic Survey
P/2015/0026 (Swansea)**

By

Jenny Hall, MCIfA & Paul Sambrook, MCIfA
Trysor

Trysor Project No. 2017/560

For: Mr Ian Powell

September 2017

38, New Road
Gwaun-cae-Gurwen
Ammanford
Carmarthenshire
SA18 1UN
www.trysor.net
enquiries@trysor.net



Cover photograph: Brynteg Chapel, looking north-northeast.

**Capel Annibynnol Brynteg
Brynteg Independent Chapel
Gorseinon, Swansea
Photographic Survey
P/2015/0026 (Swansea)**

RHIF YR ADRODDIAD - REPORT NUMBER: Trysor 2017/560

DYDDIAD 15^{fed} Medi 2017 **DATE** 15th September 2017

Paratowyd yr adroddiad hwn gan bartneriad Trysor. Mae wedi ei gael yn gywir ac yn derbyn ein sêl bendith.

This report was prepared by the Trysor partners. It has been checked and received our approval.

JENNY HALL MCI fA *Jenny Hall*

PAUL SAMBROOK MCI fA *Paul Sambrook*

Croesawn unrhyw sylwadau ar gynnwys neu strwythur yr adroddiad hwn.

We welcome any comments on the content or structure of this report.

*38, New Road,
Gwaun-cae-Gurwen
Ammanford
Carmarthenshire
SA18 1UN
01269 826397*

*82, Henfaes Road
Tonna
Neath
SA11 3EX
01639 412708*

www.trysor.net

enquiries@trysor.net

Trysor is a Registered Organisation with the Chartered Institute for Archaeologists and both partners are Members of the Chartered Institute for Archaeologists, www.archaeologists.net

Jenny Hall (BSc Joint Hons., Geology and Archaeology, MCIfA) had 12 years excavation experience, which included undertaking watching briefs prior to becoming the Sites and Monuments Record Manager for a Welsh Archaeological Trust for 10 years. She has been an independent archaeologist since 2004 undertaking a variety of work that includes upland survey, desk-based appraisals and assessments, and watching briefs.

Paul Sambrook (BA Joint Hons., Archaeology and Welsh, MCIfA, PGCE) has extensive experience as a fieldworker in Wales. He was involved with Cadw's pan-Wales Deserted Rural Settlements Project for 7 years. He also undertook Tir Gofal field survey work and watching briefs. He has been an independent archaeologist since 2004 undertaking a variety of work including upland survey, desk-based appraisals/assessments, and watching briefs.

Contents

1. Summary	1
2. Copyright	1
3. Introduction	1
4. The Development	1
5. Conditions on the consent	2
6. Methodology	2
7. Historical and Archaeological Overview	4
8. Photographs	9
9. Archive	29
10. Sources	29
Appendix A: Written Scheme of Investigation	30
Appendix B: Photographs	36

1. Summary

1.1 In October and November 2016, Trysor undertook a photographic survey at Brynteg Independent Chapel, Gorseinon prior to the conversion of the now redundant chapel into 12 residential flats.

1.2 The modification of the chapel will see the retention of many external features, including the façade of the chapel. The interior will be completely replaced.

2. Copyright

2.1 Trysor hold the copyright of this report and of the paper and digital archive. Further paper copies may be made of this report without gaining permission to reproduce but it must be noted that Figures 2 and 3 include other copyright material and should not be copied.

3. Introduction

3.1 Ian Powell of 125 Gorseinon Road, Penllergaer, Swansea SA4 9AA, commissioned Trysor heritage consultants to write a Written Scheme of Investigation relating to Listed Building Consent for planning application number: P2015/0026 (Swansea).

3.2 Trysor produced a written scheme of investigation for a Level 2 building record, see Appendix A which was approved by the archaeological advisors to the local planning authority.

3.3 The project has been identified as 2017/560 in Trysor records and given a site code BTC2017.

4. The Development

4.1 The development consists of alterations to the redundant chapel at Brynteg, Gorseinon to convert it into 12 residential flats, including a rear extension, car parking and associated external alterations.

4.2 The works will consist of the full conversion of the interior of the chapel to repurpose the building for residential use. The chapel façade will be retained, but an extension will be added to the rear or north end of the building. Externally a parking area will be created to the west of the chapel. The developer will, however, retain and maintain the chapel burial ground.

5. Conditions on the consent

5.1 In granting approval for the application, the Local Planning Authority imposed a condition on the consent; the condition specifies the actions necessary to mitigate the impact of the development on the built resource.

No site works shall be undertaken until the implementation of an appropriate programme of building recording and analysis has been agreed with the local planning authority, to be carried out by a specialist acceptable to the local planning authority and in accordance with an agreed written specification.

Reason: The buildings are of architectural and cultural significance and the specified records are required to mitigate the impact of the development.

6. Methodology

6.1 On July 5th, 2017, Trysor visited the chapel and took a series of photographs showing internal and external views and features.

6.2 A Level 2 record of the building was made to record the interior and exterior of the building. Historic England's *Understanding Historic Buildings: A guide to good recording practice* was used for guidance. This defines a Level 2 record as;

*"...as a **descriptive record**, made in similar circumstances to Level 1 but when more information is needed. It may be made of a building which is judged not to require a more detailed record, or it may serve to gather data for a wider project. Both the exterior and interior of the building will be seen, described and photographed. The examination of the building will produce an analysis of its development and use and the record will include the conclusions reached, but it will not discuss in detail the evidence on which this analysis is based. A plan and sometimes other drawings may be made but the drawn record will normally not be comprehensive and may be tailored to the scope of a wider project."* (Historic England, 2016, p,26).

Capel Annibynnol Brynteg - Capel Brynteg, Gorseinon
Photographic Survey P/2015/0026 (Swansea)

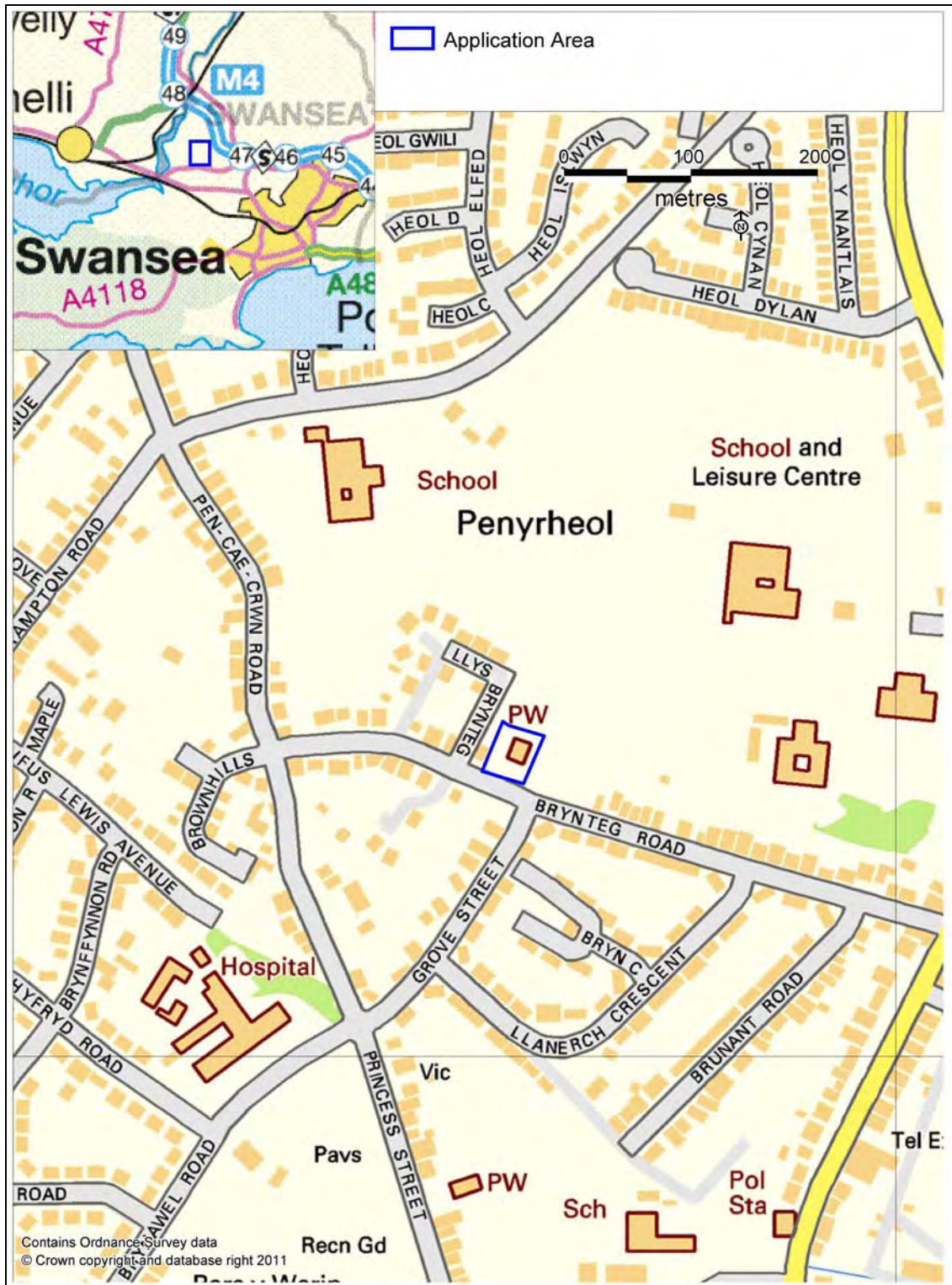


Figure 1: Location of Brynteg Independent Chapel, Gorseinon.

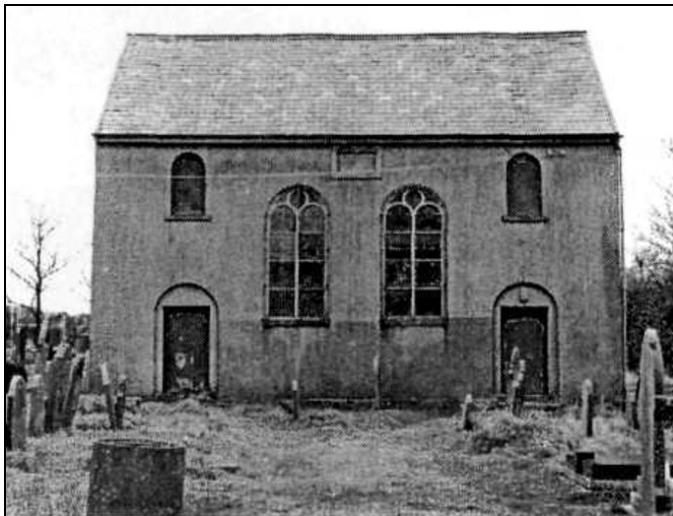
7. Historical and Archaeological Overview

7.1 Brynteg chapel, Gorseinon is recorded in the National Monuments Record as NPRN 9116, but no record for it exists in the regional Historic Environment Record. It is not a Listed Building.

7.2 The cause at Brynteg has its origins in the late 17th century, when a group of dissenting Protestants began to meet at Tirdwncyn, Loughor. The congregation eventually built a chapel at Rhyd y Maerdy, which was to become part of Gorseinon.

7.3 By the early 19th century this chapel was found to be too small and a new chapel was built at Penyrheol, Gorseinon. This chapel was named Brynteg.

7.4 By 1847, with the local industries causing a rapid growth in the population of the district, this chapel was also too small for its growing congregation, and a second Brynteg Chapel was built nearby to replace it. This chapel could seat 400 hundred people. It was a long-wall entry type chapel, built in the Simple round-headed style.



*Figure 2: The 1847
Brynteg Chapel.*

7.5 Within 50 years, the success of the cause saw the church purchase a new plot of land adjacent to their chapel and burial ground and in 1897 the third Brynteg Chapel was erected, at the cost of £1738 and 13 shillings, with the seating capacity to hold 550 people. This is the building which stands at the site today.

7.6 When the present chapel was built the original chapel was converted into a vestry and Sunday School. Sadly this old chapel was destroyed by fire in 1998 and its remains were subsequently demolished. The foundations of the original chapel can still be seen in the burial ground, to the north of the standing chapel. A disused toilet block still stands between the present chapel and the site of the original chapel.

7.7 The extant chapel was built in 1897 and is a typical gable-entry chapel, built in the classical style with round-headed windows. Internally it is a fine building. Original stained glass windows, bearing floral decorations, are still in place in an internal window in the lobby and in the windows of the north gable wall, either side of the pulpit.

7.8 At some point around the end of the 20th century, the interior of the chapel was altered. This saw the creation of an inner lobby, flanked by a modern kitchen to the east and two internal WCs to the west. Presumably these alterations were made after the loss of the vestry and schoolroom in 1998. To accommodate the interior lobby, the original lobby was kept unchanged, but the pews at the southern end of the main congregational room were removed and a new partition wall built, shortening the length of the congregational room by approximately 4 metres.

7.9 Brynteg Independent Chapel closed in 2013 and was advertised for sale by July of that year. The minutes of Gorseinon Town Council for 2nd July, 2014 show that the chapel and graveyard had been sold by that time, with an assurance regarding the long term maintenance of the graveyard (available online through <http://www.gorseinontowncouncil.gov.uk>).

7.10 The church records from 1816 to closure are held by the West Glamorgan Record Service (Reference D/D Ind 35/80-83).

7.11 The history of the cause at Brynteg was recorded in an undated Welsh language volume published after 1971, entitled "Hanes Capel Brynteg" (Williams & Davies, undated). This book is also available in an English translation as "The History of Brynteg Chapel" (Griffiths, 2000).

7.12 In historical terms, the present chapel is particularly noteworthy for its association with Evan Roberts and the 1904 Revival. Roberts began the Revival with a series of meetings held at Moriah Chapel, Loughor, during the first week of November, 1904. On the night of November 9th, he came to Brynteg to preach in the old chapel. He preached in the new chapel on the following evening, to a full chapel. These two meetings were the first of the Revival to be held outside Loughor and mark the beginnings of the movement becoming a National Revival. Brynteg will long remain an important milestone in the history of Welsh nonconformity for this reason.

7.12.1 The following translated excerpt from D.M. Phillips' biography of Evan Roberts (Phillips, 1912) gives an excellent account of events at Brynteg over those two nights;

“III NOVEMBER 9th.

Evan Roberts is at Brynteg Congregational Chapel tonight, in answer to the deputation that waited upon him on Monday evening. Before going to the meeting, he had a divine prayer meeting in the house of Mr. Daniel Davies, Loughor, and on the way to Brynteg he told Mr. Davies there was a glorious time before them that night. He stopped the Rev. Mr. Stephens from calling anyone to introduce the service, and told him that his difficulty would soon be not to get people to take part in the meetings, but to stop them. His letter of November 10th to Mr. Sydney Evans contains a comparatively full account of this night's proceedings. Everything had a heavenly character from beginning to end, and one minister said that he never saw anything more like a transfiguration than some persons who came under the divine influence in the meeting... The melting power of the singing was sweeping, and those present will never forget the tendering of — 'Here is love vast as the ocean,' etc. which we shall henceforth call the Chief Revival Song. When a collection towards the Foreign Mission was made, some threw every penny in their possession into the boxes, and the young ladies who took the boxes round had been so much absorbed by the mighty influence of the service, that they could not count the money. Roberts remarked that he heard the sound of a good collection in the singing of 'Calvary Summit'. At twelve o'clock, he opened the Bible, read a portion, and commented on it in a way that impressed the audience deeply.

IV. NOVEMBER 10th.

The revival meeting was held at Brynteg this night again, but the old chapel proved too small and they had to go to the new one, every corner of which was soon filled... What a never to be forgotten night this was. At one time, the greater number of the audience had been completely carried away by spiritual emotion. Evan Roberts paraded back and fore along the aisle with the Bible in his hand. Those who were over-come by the holy influence went to the deacons pew, and many of the most intelligent persons who were present assure us that an influence came from them which was too much for the audience to bear. One got up in the meeting, and expressed the opinions of the people regarding Evan Roberts. He said that many thought that he was getting insane. But, he added, I saw many like him in the Revival of 1859, hence do not fear anything. The Revivalist laughed heartily when he heard that. Visitors came from afar this night to see and judge for themselves the quality of the Revival, and the mental condition of its leader. A number ran to the meeting in their working clothes, fearing that the chapel would be filled before they reached there if they went home for their food. One at least

brought his ration with him, in order to go to his work the next morning from the meeting. To-night was the first time for a newspaper correspondent to visit the meetings. A short article had appeared in the Western Mail in the morning, and, consequently, the same firm sent a special correspondent to see for himself about the nature of the movement. This article being the first public notice of the Revival, we insert it here in full as it appeared (November 10th): —

A WONDERFUL PREACHER.

GREAT CROWDS OF PEOPLE DRAWN TO LOUGHOR

Congregation stay till Half-past Two in the Morning.

A remarkable religious revival is now taking place at Loughor. For some days a young man named Evan Roberts, a native of Loughor, but at present a student at Newcastle-Emlyn, has been causing great surprise by his extraordinary orations at Moriah Chapel, that place of worship having been besieged by dense crowds of people unable to obtain admission. Such excitement has prevailed that the road in which the chapel is situated has been lined with people from end to end...

He is a Methodist, but the present movement is participated in by ministers of all the Non-conformist denominations in the locality. Brynteg Chapel, Gorseinon, is to be the next scene of his ministrations. A collection was made during this service, as on the previous night, for the Foreign Mission, and many gave all they had in their possession. In the meetings at Brynteg, Evan Roberts had a sufficient proof that things had turned on his side and that victory was his."

(available as an English translation online on the website www.welshrevival.org).

Capel Annibynnol Brynteg - Capel Brynteg, Gorseinon
 Photographic Survey P/2015/0026 (Swansea)

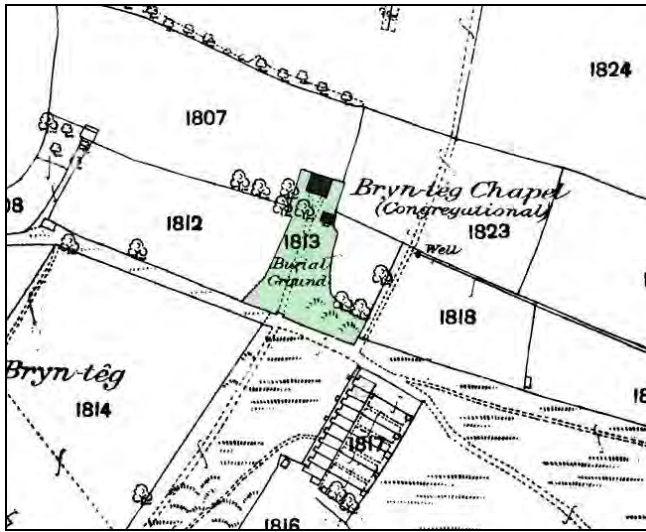


Figure 3: The 1877 1:2500 scale Ordnance Survey map shows the site of the chapel built in 1847 and its smaller burial ground.

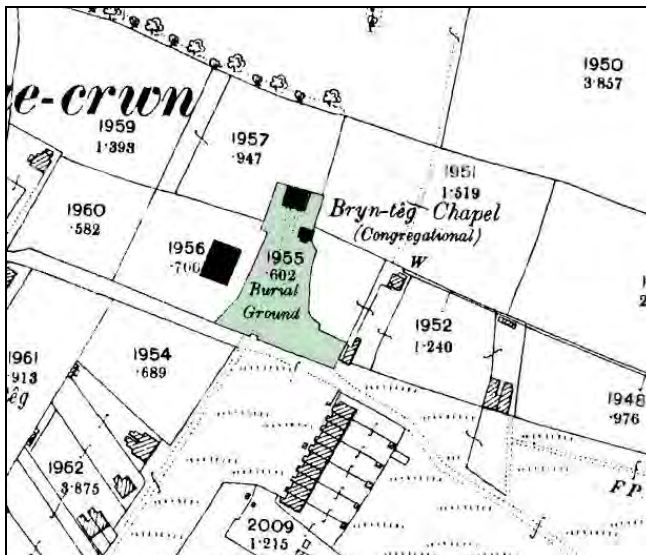


Figure 4: The 1898 1:2500 scale Ordnance Survey map shows the 1847 chapel still in use with the new chapel already standing to the southwest. This map would probably have been surveyed prior to 1898 and is likely to show the layout in 1897.

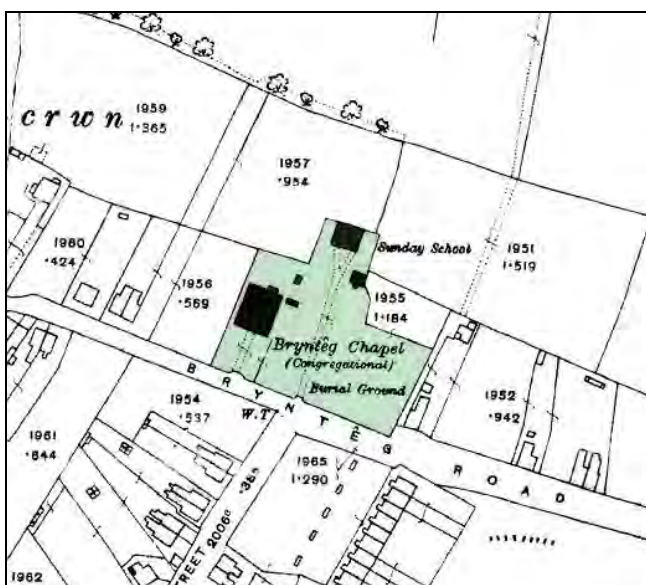


Figure 5: The 1916 1:2500 scale Ordnance Survey map shows that the 1847 chapel had become the Sunday School, with the new chapel now standing within an enlarged burial ground. The burial ground was extended further northwards during the 20th century.

8. Photographs

8.1 Colour digital photographs, inside and outside the chapel, using a 16M pixel camera. The following table describes the content of each photograph included in the project archive and their locations are provided in the following map, see Figure 6, 7, 8, 9 and 10. The photographs are included in Appendix B at the end of the report.

Site Code:	Site Name:		NGR:	
BTC2017	Brynteg Chapel, Gorseinon			
Photo Number	Contexts/ Description	Direction Looking	Date	Taken by
BTC2017_001	External view of the chapel.	Northwest	7 July 2017	RPS
BTC2017_002	External view of the chapel.	Northwest	7 July 2017	RPS
BTC2017_003	External view of east elevation of chapel.	West-northwest	7 July 2017	RPS
BTC2017_004	External view of east elevation of chapel.	West	7 July 2017	RPS
BTC2017_005	External view of north elevation of chapel.	Southwest	7 July 2017	RPS
BTC2017_006	External view of boiler house attached to north side of chapel	Southwest	7 July 2017	RPS
BTC2017_007	External view of ancillary building to north of chapel.	North-northwest	7 July 2017	RPS
BTC2017_008	External view of ancillary building to north of chapel.	East-northeast	7 July 2017	RPS
BTC2017_009	External view of boiler house attached to north side of chapel	Southeast	7 July 2017	RPS
BTC2017_010	External view of outbuilding to north of chapel.	Southeast	7 July 2017	RPS
BTC2017_011	External view of outbuilding to north of chapel.	South-southwest	7 July 2017	RPS
BTC2017_012	External view of north elevation of	South	7 July 2017	RPS

Capel Annibynnol Brynteg - Capel Brynteg, Gorseinon
Photographic Survey P/2015/0026 (Swansea)

Site Code:	Site Name:		NGR:	
BTC2017	Brynteg Chapel, Gorseinon			
Photo Number	Contexts/ Description	Direction Looking	Date	Taken by
	chapel.			
BTC2017_013	An original window in the north elevation of the chapel.	South	7 July 2017	RPS
BTC2017_014	A ventilation aperture in the peak of the north elevation of the chapel.	South	7 July 2017	RPS
BTC2017_015	External view of the chapel.	Southeast	7 July 2017	RPS
BTC2017_016	External view of the outbuilding to the north of the chapel.	East-southeast	7 July 2017	RPS
BTC2017_017	External view of the west elevation of the chapel.	East-southeast	7 July 2017	RPS
BTC2017_018	Paved area along the western side of the chapel.	North-northeast	7 July 2017	RPS
BTC2017_019	An inscribed memorial plaque on the south elevation of the chapel, to the west of the entrance.	North-northeast	7 July 2017	RPS
BTC2017_020	An inscribed foundation plaque on the south elevation of the chapel, to the east of the entrance.	North-northeast	7 July 2017	RPS
BTC2017_021	The war memorial to the south of the chapel.	Northeast	7 July 2017	RPS
BTC2017_022	The war memorial to the south of the chapel.	North-northeast	7 July 2017	RPS
BTC2017_023	The inscription on the war memorial to the south of the chapel.	North-northeast	7 July 2017	RPS

Capel Annibynnol Brynteg - Capel Brynteg, Gorseinon
Photographic Survey P/2015/0026 (Swansea)

Site Code:	Site Name:		NGR:	
BTC2017	Brynteg Chapel, Gorseinon			
Photo Number	Contexts/ Description	Direction Looking	Date	Taken by
BTC2017_024	The inscription on the war memorial to the south of the chapel.	East-southeast	7 July 2017	RPS
BTC2017_025	The war memorial to the south of the chapel.	East-southeast	7 July 2017	RPS
BTC2017_026	External view of the south elevation of the chapel, with the war memorial to the right.	North-northeast	7 July 2017	RPS
BTC2017_027	External view of the south elevation.	North-northeast	7 July 2017	RPS
BTC2017_028	External view of the south elevation, looking along the path	North-northeast	7 July 2017	RPS
BTC2017_029	External view of the south elevation, looking from the gateway.	North-northeast	7 July 2017	RPS
BTC2017_030	External view of the south elevation, looking from the road outside the gateway.	North-northeast	7 July 2017	RPS
BTC2017_031	External view of the south elevation, looking from the road outside the gateway.	Northeast	7 July 2017	RPS
BTC2017_032	External view of the south elevation, looking from the road outside the gateway.	North	7 July 2017	RPS
BTC2017_033	A view of the southern burial ground wall from the road to the south of the chapel.	Northeast	7 July 2017	RPS
BTC2017_034	The pedestrian gateway leading into	North-northeast	7 July 2017	RPS

Capel Annibynnol Brynteg - Capel Brynteg, Gorseinon
Photographic Survey P/2015/0026 (Swansea)

Site Code:	Site Name:		NGR:	
BTC2017	Brynteg Chapel, Gorseinon			
Photo Number	Contexts/ Description	Direction Looking	Date	Taken by
	the chapel entrance to the south of the chapel			
BTC2017_035	Detail of the ornate cast ironwork on the pedestrian gateway leading into the chapel entrance to the south of the chapel.	North-northeast	7 July 2017	RPS
BTC2017_036	A view from the pulpit of the interior of the chapel.	South-southwest	7 July 2017	RPS
BTC2017_037	A view of the pulpit and "set fawr" or deacons' pews inside the chapel.	Southeast	7 July 2017	RPS
BTC2017_038	A view of the "set fawr" inside the chapel.	Southeast	7 July 2017	RPS
BTC2017_039	A view of the pulpit and "set fawr" inside the chapel.	East	7 July 2017	RPS
BTC2017_040	A view of the pulpit and "set fawr" inside the chapel.	North-northeast	7 July 2017	RPS
BTC2017_041	A view of the pulpit and "set fawr" inside the chapel, showing the "Duw Cariad Yw" inscription above.	North-northeast	7 July 2017	RPS
BTC2017_042	Internal view of the chapel looking across the ground floor with the ornate gallery above, supported on cast iron pillars.	East-southeast	7 July 2017	RPS

*Capel Annibynnol Brynteg - Capel Brynteg, Gorseinon
Photographic Survey P/2015/0026 (Swansea)*

Site Code:	Site Name:		NGR:	
BTC2017	Brynteg Chapel, Gorseinon			
Photo Number	Contexts/ Description	Direction Looking	Date	Taken by
BTC2017_043	Internal view of the chapel looking across the ground floor with the ornate gallery above, supported on cast iron pillars.	West-northwest	7 July 2017	RPS
BTC2017_044	Internal view of the chapel looking across the ground floor with the ornate gallery above, supported on cast iron pillars.	Northeast	7 July 2017	RPS
BTC2017_045	Internal view of the chapel along the western aisle with the pews along the western wall to the left, below the gallery, supported on cast iron pillars.	North-northeast	7 July 2017	RPS
BTC2017_046	Internal view of the chapel from the eastern aisle across the central pews, towards the pulpit and "set fawr".	North	7 July 2017	RPS
BTC2017_047	Internal view of the chapel along the eastern aisle with the pews along the eastern wall to the right, below the gallery, supported on cast iron pillars.	North-northeast	7 July 2017	RPS
BTC2017_048	Internal view of the chapel from the gallery.	Northeast	7 July 2017	RPS
BTC2017_049	Internal view of the chapel from the gallery.	Northwest	7 July 2017	RPS

*Capel Annibynnol Brynteg - Capel Brynteg, Gorseinon
Photographic Survey P/2015/0026 (Swansea)*

Site Code:	Site Name:		NGR:	
BTC2017	Brynteg Chapel, Gorseinon			
Photo Number	Contexts/ Description	Direction Looking	Date	Taken by
BTC2017_050	Internal view of the chapel from the gallery towards the pulpit.	North-northeast	7 July 2017	RPS
BTC2017_051	Internal view of the chapel from the gallery towards the pulpit.	North-northeast	7 July 2017	RPS
BTC2017_052	Internal view of the chapel from the gallery, looking towards the seats at rear of the gallery.	Southwest	7 July 2017	RPS
BTC2017_053	Internal view of the stained glass window above and east of the pulpit.	North-northeast	7 July 2017	RPS
BTC2017_054	"Duw Cariad Yw" – the inscription painted above the pulpit, behind an electric light pendant hanging from the ceiling.	North-northeast	7 July 2017	RPS
BTC2017_055	Gallery seats and the decorative cast-iron panels of the eastern side of the gallery.	East-southeast	7 July 2017	RPS
BTC2017_056	A closer view of the decorative cast-iron panels fronting the eastern side of the gallery.	East-southeast	7 July 2017	RPS
BTC2017_057	A view of the pulpit from the western gallery, showing the stained glass windows and "Duw Cariad Yw" inscription above the pulpit.	Northeast	7 July 2017	RPS

Capel Annibynnol Brynteg - Capel Brynteg, Gorseinon
Photographic Survey P/2015/0026 (Swansea)

Site Code:	Site Name:		NGR:	
BTC2017	Brynteg Chapel, Gorseinon			
Photo Number	Contexts/ Description	Direction Looking	Date	Taken by
BTC2017_058	A view of the eastern side of the ground floor from the western gallery, with the eastern gallery above.	East-southeast	7 July 2017	RPS
BTC2017_059	A view of the western side of the ground floor from the eastern gallery, with the western gallery above.	West-northwest	7 July 2017	RPS
BTC2017_060	A view down the upper flight of stairs from the western gallery to the landing, from where a lower flight of steps leads to the entrance lobby.	South-southwest	7 July 2017	RPS
BTC2017_061	A view down the lower flight of stairs from the western gallery to the entrance lobby.	East-southeast	7 July 2017	RPS
BTC2017_062	A view of the lower flight of stairs leading to the eastern gallery from the entrance lobby. This stairs is blocked at the landing.	East-southeast	7 July 2017	RPS
BTC2017_063	The highly decorative, stained-glass window in the wall which originally separated the entrance lobby from the main body of the chapel.	South-southwest	7 July 2017	RPS

*Capel Annibynnol Brynteg - Capel Brynteg, Gorseinon
Photographic Survey P/2015/0026 (Swansea)*

Site Code:	Site Name:		NGR:	
BTC2017	Brynteg Chapel, Gorseinon			
Photo Number	Contexts/ Description	Direction Looking	Date	Taken by
BTC2017_064	The highly decorative, stained-glass window in the wall of the entrance lobby.	South-southwest	7 July 2017	RPS
BTC2017_065	The eastern pane of the highly decorative, stained-glass window in the wall of the entrance lobby.	South-southwest	7 July 2017	RPS
BTC2017_066	The western pane of the highly decorative, stained-glass window in the wall of the entrance lobby.	South-southwest	7 July 2017	RPS
BTC2017_067	The inner lobby of the chapel, created in modern times by removing the rear pews and building a partition wall and new ceiling beneath the gallery. A kitchen was installed and is visible through the facing door. The main body of the chapel is entered via the door on the left here.	East-southeast	7 July 2017	RPS
BTC2017_068	The inner lobby with the stained-glass window of the entrance lobby to the right.	East-southeast	7 July 2017	RPS
BTC2017_069	The inner lobby and the stained-glass window of the entrance lobby. A pew removed from the chapel when it	Southeast	7 July 2017	RPS

Capel Annibynnol Brynteg - Capel Brynteg, Gorseinon
Photographic Survey P/2015/0026 (Swansea)

Site Code:	Site Name:	NGR:		
BTC2017	Brynteg Chapel, Gorseinon			
Photo Number	Contexts/ Description	Direction Looking	Date	Taken by
	was truncated to create the inner lobby is placed below the window, with decorative radiators either side.			
BTC2017_070	The inner lobby with the stained-glass window of the entrance lobby to the right. The facing doors lead to separate, modern WCs.	Southwest	7 July 2017	RPS
BTC2017_071	A view from the front door of the chapel, looking towards the gateway.	South-southwest	7 July 2017	RPS
BTC2017_072	The inner lobby showing the stained-glass window of the entrance lobby, the pew below and the decorative radiators.	Southeast	7 July 2017	RPS
BTC2017_073	A close up of the western decorative radiator in the inner lobby.	South-southwest	7 July 2017	RPS
BTC2017_074	A close up of the western decorative radiator in the inner lobby.	Southeast	7 July 2017	RPS
BTC2017_075	A close up of the western decorative radiator in the inner lobby.	East-southeast	7 July 2017	RPS
BTC2017_076	A view of the eastern door connecting the	South	7 July 2017	RPS

Capel Annibynnol Brynteg - Capel Brynteg, Gorseinon
Photographic Survey P/2015/0026 (Swansea)

Site Code:	Site Name:		NGR:	
BTC2017	Brynteg Chapel, Gorseinon			
Photo Number	Contexts/ Description	Direction Looking	Date	Taken by
	outer and inner lobby. It would originally have led from the outer lobby into the main body of the chapel.			
BTC2017_077	A view of the western door connecting the outer and inner lobby. It would originally have led from the outer lobby into the main body of the chapel.	South	7 July 2017	RPS
BTC2017_078	A view of the chapel interior on the ground floor, with the gallery above.	Southwest	7 July 2017	RPS
BTC2017_079	A view of the former position of the organ, now removed.	West-northwest	7 July 2017	RPS
BTC2017_080	An internal view looking towards the pulpit.	Northwest	7 July 2017	RPS
BTC2017_081	A close up of the decorative capital of one of the cast-iron columns supporting the gallery.	East-southeast	7 July 2017	RPS
BTC2017_082	A close up of the decorative capital of one of the cast-iron columns supporting the gallery.	Southeast	7 July 2017	RPS
BTC2017_083	The decorative front of the eastern gallery.	East-southeast	7 July 2017	RPS
BTC2017_084	The decorative front of the eastern gallery.	East-southeast	7 July 2017	RPS

*Capel Annibynnol Brynteg - Capel Brynteg, Gorseinon
Photographic Survey P/2015/0026 (Swansea)*

Site Code:	Site Name:		NGR:	
BTC2017	Brynteg Chapel, Gorseinon			
Photo Number	Contexts/Description	Direction Looking	Date	Taken by
BTC2017_085	The decorative front of the eastern gallery.	East-southeast	7 July 2017	RPS
BTC2017_086	A view of the pews in the southeastern corner of the chapel, showing the painted numbers on each row.	East-southeast	7 July 2017	RPS
BTC2017_087	A view of the centre of the chapel ceiling, looking upwards from the ground floor.	Upwards	7 July 2017	RPS
BTC2017_088	A view of the chapel ceiling.	North-northeast	7 July 2017	RPS
BTC2017_089	A view of the décor along the front edge of the western gallery, with the centre of the chapel ceiling above.	Upwards	7 July 2017	RPS
BTC2017_090	A view of the chapel ceiling from the eastern gallery.	North	7 July 2017	RPS
BTC2017_091	A view of the chapel ceiling from the western gallery.	Northeast	7 July 2017	RPS
BTC2017_092	The chapel ceiling at the southwest corner of the chapel.	Upwards	7 July 2017	RPS
BTC2017_093	A view of the southern gallery, which faces the pulpit, showing the clock.	South-southwest	7 July 2017	RPS
BTC2017_094	The chapel clock set into the front of the southern gallery.	South-southwest	7 July 2017	RPS
BTC2017_095	A close-up of the chapel clock set into	South-southwest	7 July 2017	RPS

*Capel Annibynnol Brynteg - Capel Brynteg, Gorseinon
Photographic Survey P/2015/0026 (Swansea)*

Site Code:	Site Name:		NGR:	
BTC2017	Brynteg Chapel, Gorseinon			
Photo Number	Contexts/ Description	Direction Looking	Date	Taken by
	the front of the southern gallery. "Presented by H. Kaltenbach, Llanelly."			
BTC2017_096	The pulpit.	North-northeast	7 July 2017	RPS
BTC2017_097	The pulpit.	North-northwest	7 July 2017	RPS
BTC2017_098	The passage leading from the interior of the chapel to the boiler room, with the external door to the right.	North-northeast	7 July 2017	RPS
BTC2017_099	The boiler room and boiler.	West-northwest	7 July 2017	RPS
BTC2017_100	The carpet in the western aisle.	North-northeast	7 July 2017	RPS
BTC2017_101	Row number 7 of the pews on the ground floor.	East-southeast	7 July 2017	RPS
BTC2017_102	Row number 32 of the pews on the ground floor.	East-southeast	7 July 2017	RPS
BTC2017_103	The book cupboard in the northern wall of the chapel, at the end of the western aisle, with the pulpit stairs visible to the right.	Northeast	7 July 2017	RPS
BTC2017_104	The southern toilet to the west of the inner lobby	West-southwest	7 July 2017	RPS
BTC2017_105	The northern toilet to the west of the inner lobby.	West-southwest	7 July 2017	RPS
BTC2017_106	The kitchen to the east of the inner lobby.	East	7 July 2017	RPS

Capel Annibynnol Brynteg - Capel Brynteg, Gorseinon
Photographic Survey P/2015/0026 (Swansea)

Site Code:	Site Name:		NGR:	
BTC2017	Brynteg Chapel, Gorseinon			
Photo Number	Contexts/ Description	Direction Looking	Date	Taken by
BTC2017_107	An old doorway and surviving decorative woodwork retained in the modern kitchen.	South-southwest	7 July 2017	RPS
BTC2017_108	A poster in the inner lobby: "Gweithgareddau'r Eglwys" (Church Activities).	North-northeast	7 July 2017	RPS
BTC2017_109	A poster in the inner lobby: "Croeso" (Welcome).	North-northeast	7 July 2017	RPS
BTC2017_110	A fundraising poster in the inner lobby.	North-northeast	7 July 2017	RPS
BTC2017_111	A poster in the inner lobby: "Ieuenctid" (Youth).	North-northeast	7 July 2017	RPS
BTC2017_112	A poster bearing the words of a hymn in the inner lobby.	North-northeast	7 July 2017	RPS
BTC2017_113	A poster bearing the words of a hymn in the inner lobby.	North-northeast	7 July 2017	RPS
BTC2017_114	Fair Trade posters in the inner lobby.	Southwest	7 July 2017	RPS
BTC2017_115	A missionary poster in the inner lobby.	East-southeast	7 July 2017	RPS
BTC2017_116	A poster in the inner lobby: "Iechyd a Diogelwch" (Health and Safety)	North-northeast	7 July 2017	RPS
BTC2017_117	A poster in the inner lobby: "Rotas".	North-northeast	7 July 2017	RPS
BTC2017_118	Wet rot in the outer lobby panelling. Note the decorative, white-painted roundels, which feature throughout the chapel.	Southeast	7 July 2017	RPS

*Capel Annibynnol Brynteg - Capel Brynteg, Gorseinon
Photographic Survey P/2015/0026 (Swansea)*

Site Code:	Site Name:		NGR:	
BTC2017	Brynteg Chapel, Gorseinon			
Photo Number	Contexts/ Description	Direction Looking	Date	Taken by
BTC2017_119	The pews in the southwest corner of the chapel. The furthest pew has been truncated to fit into the new layout created when the inner lobby was added.	Southwest	7 July 2017	RPS
BTC2017_120	The pews in the southwest corner of the chapel, showing the row numbers.	Southwest	7 July 2017	RPS
BTC2017_121	A view of the steps at the chapel entrance door.	South-southwest	7 July 2017	RPS
BTC2017_122	A view of the decorative metal grill in the threshold of the chapel entrance door.	South-southwest	7 July 2017	RPS

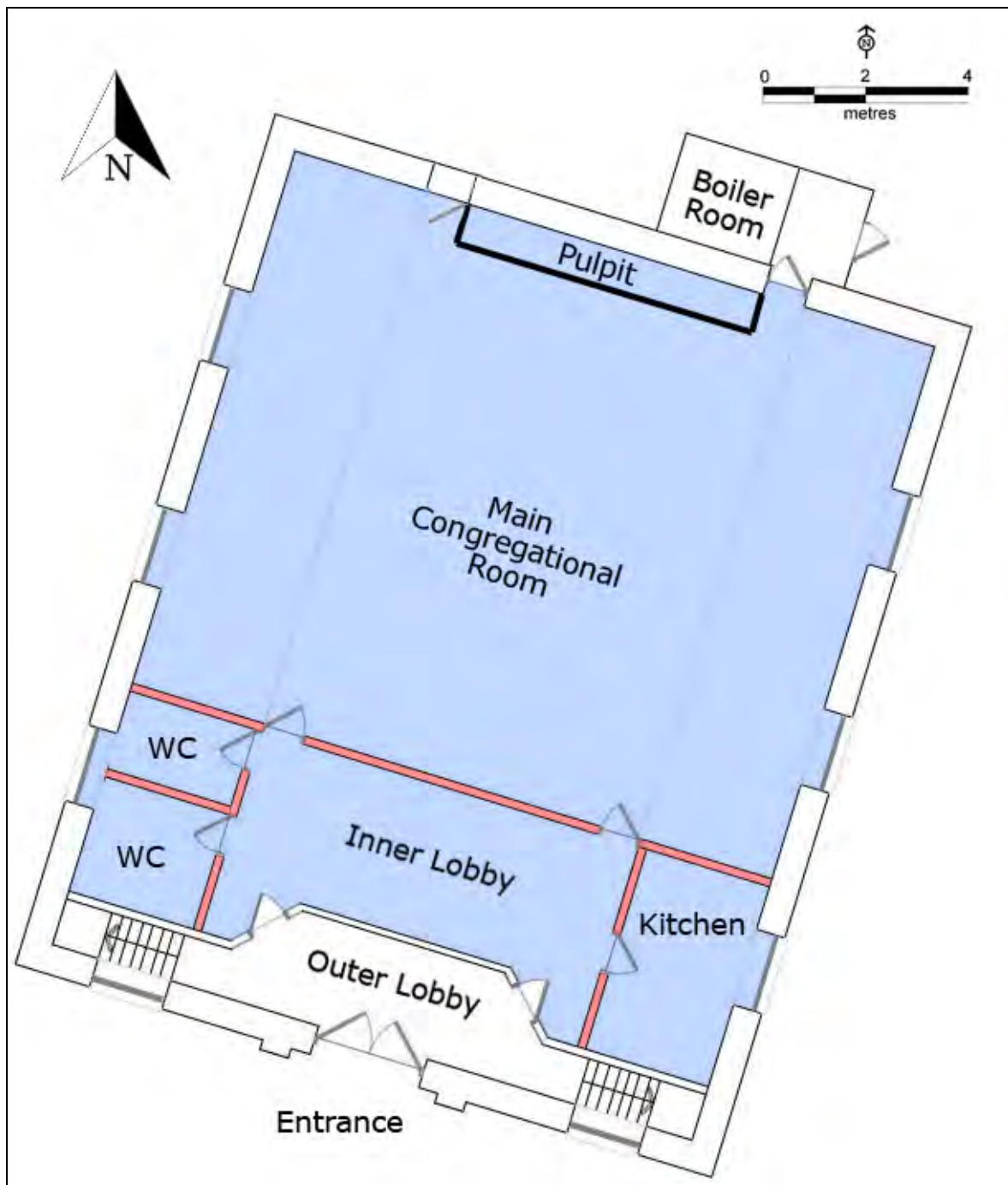


Figure 6: An annotated plan of the chapel. The area shaded blue shows the original extent of the main congregational room, which was truncated in the late 20th or early 21st century by the creation of the inner lobby, kitchen and WCs. The partition walls inserted at that time are shown in red.

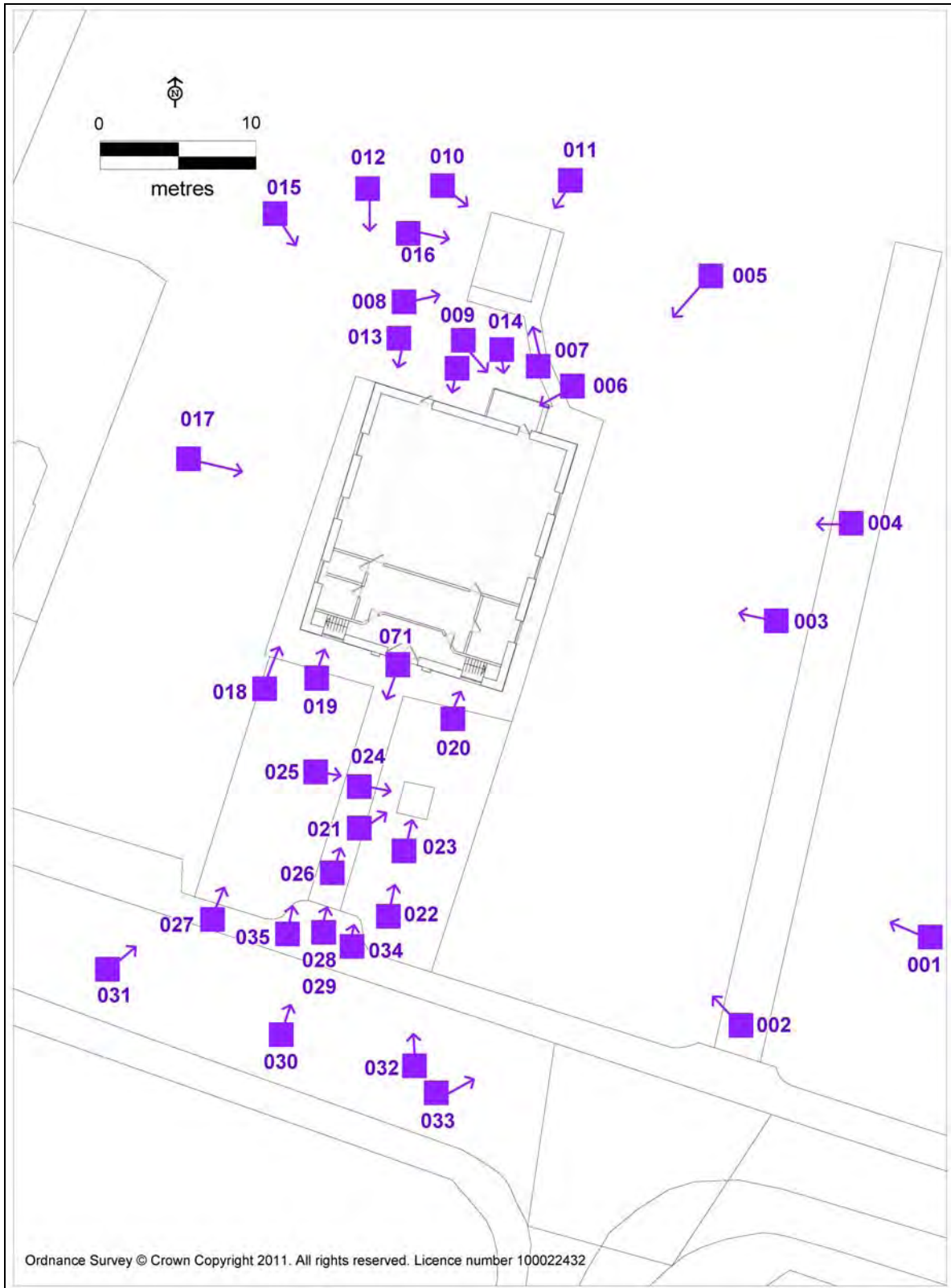


Figure 7: Location of photographs. External views of the chapel and its environs.

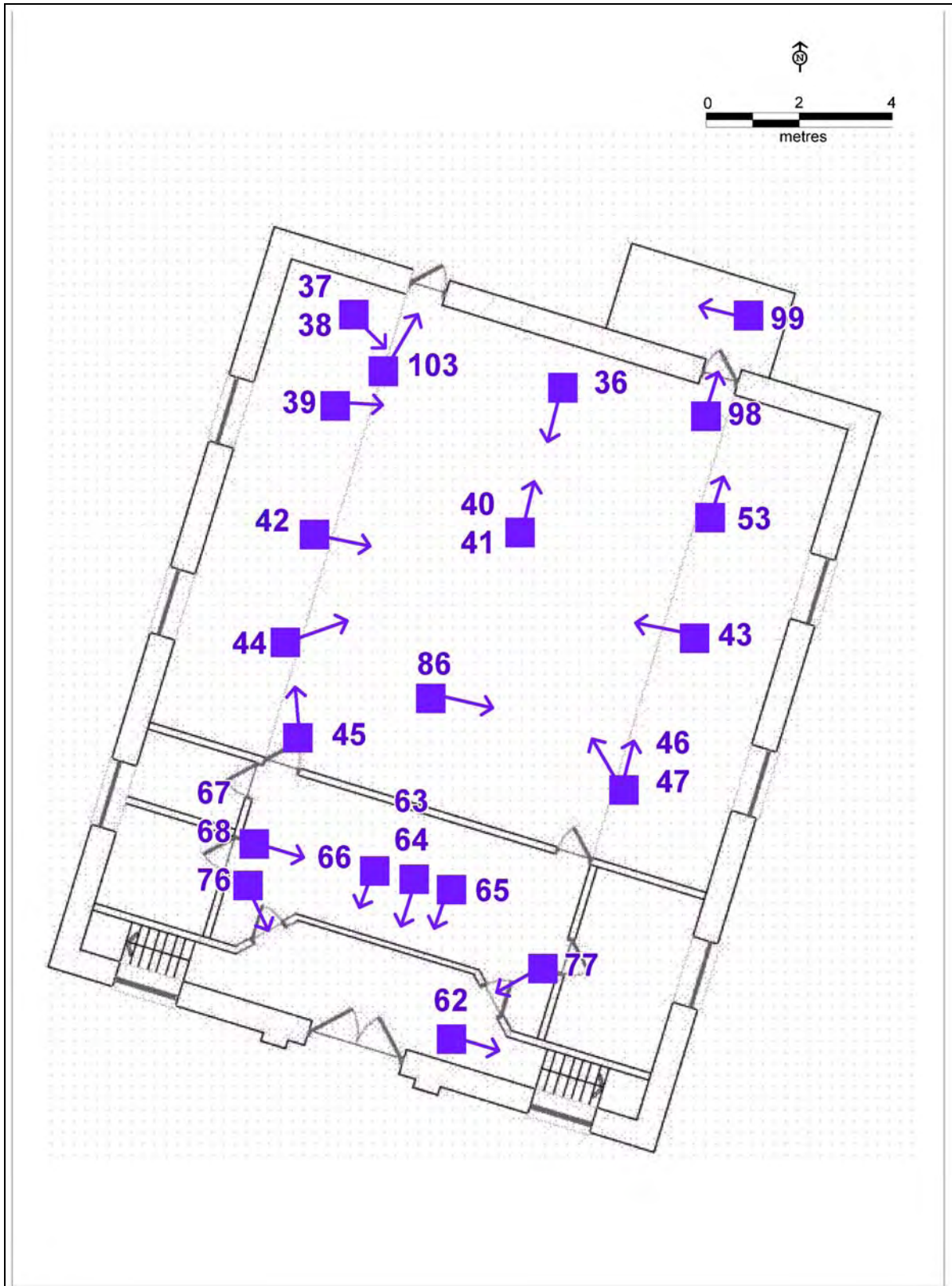


Figure 8: Location of photographs. Internal views of ground floor of chapel, see also Figures 10 and 11.

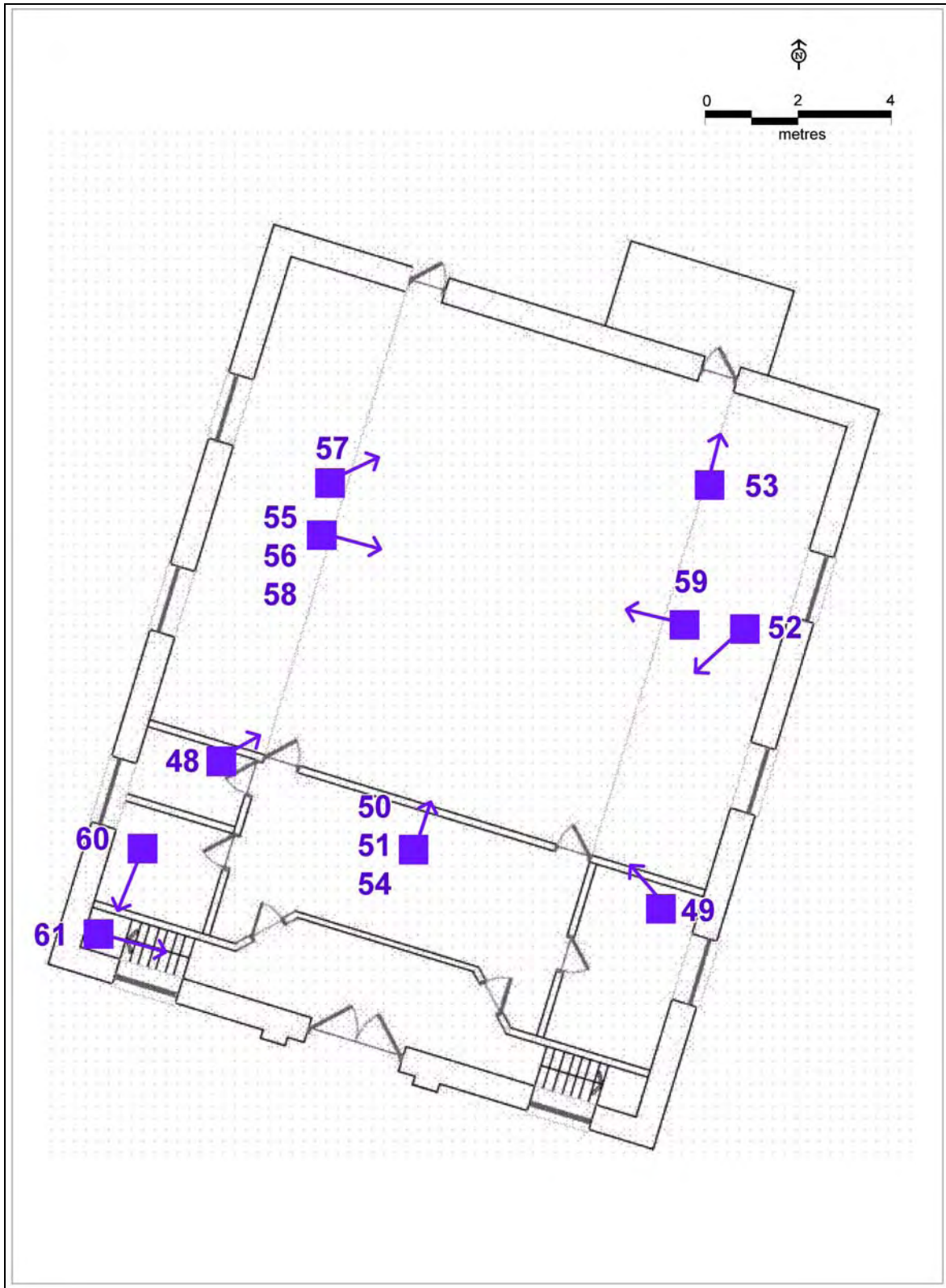


Figure 9: Location of photographs. Internal photographs of gallery level

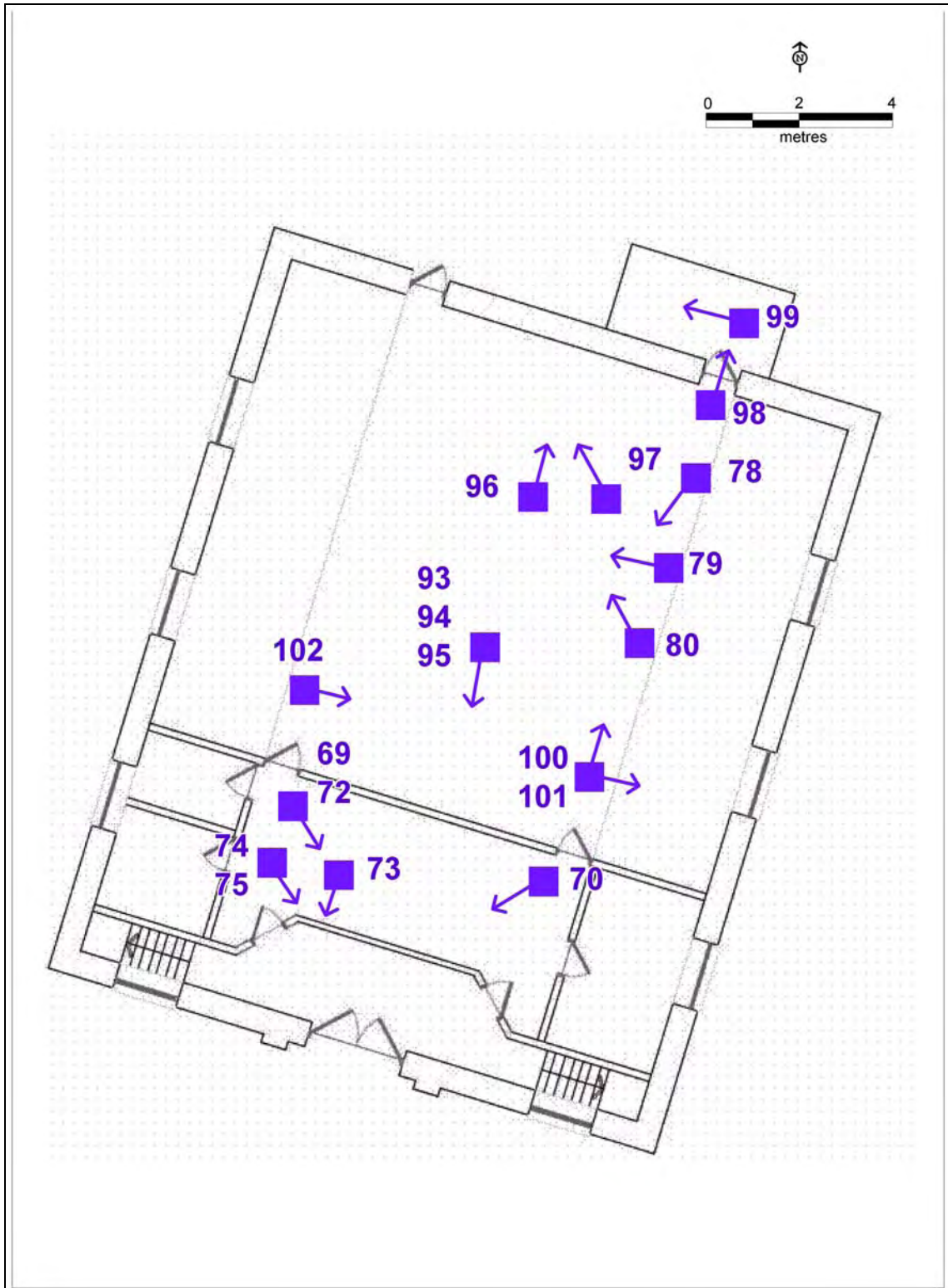


Figure 10: Location of photographs. Internal views of ground floor of chapel, see also Figures 8 and 11.

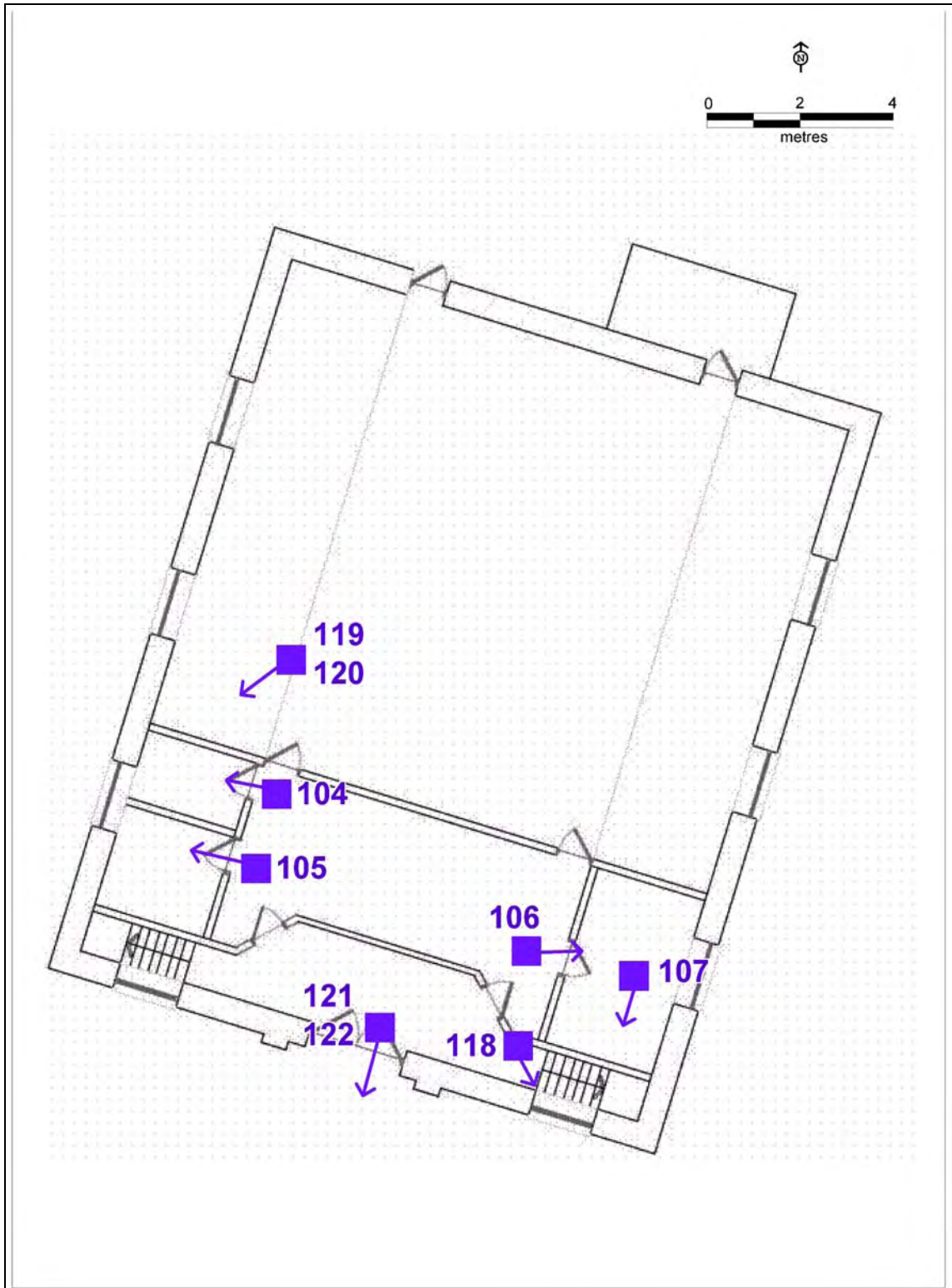


Figure 11: Location of photographs. Internal views of ground floor of chapel, see also Figures 8 and 10.

9. Archive

9.1 The archive and a copy of the report and photographs will be deposited with the National Monuments Record, Aberystwyth. Photographs are in TIFF format, following the standard required by the RCAHMW.

9.2 A further pdf copy of the report and photographic archive will be supplied to the Historic Environment Record at Glamorgan Gwent Archaeological Trust, Swansea.

10. Sources

Capel, undated, *Local Information Sheet 26, Loughor and Gorseinon*. Printed by the West Glamorgan Archive Service.

Chartered Institute for Archaeologists, 2014, *Standard and Guidance for the creation, compilation, transfer and deposition of archaeological archives*, available online from the CIfA website, www.archaeologists.net

Phillips, Parch. D.M., 1912, *Evan Roberts a'i waith*.

Williams, I, 2002, *The History of Brynteg Chapel*, English translation of Hanes Capel Brynteg.

West Glamorgan Archive Service, D/D Ind 35, D/D Z 448/5-9.

APPENDIX A – Written Scheme of Investigation

WRITTEN SCHEME OF INVESTIGATION FOR BRYNTEG CHAPEL, GORSEINON PLANNING APPLICATION 2015/0026

Contents

1	Introduction	1
2.	Objective of the Written Scheme of Investigation	2
3.	The Development	2
4.	Conditions on the Listed Building consent	2
5.	Nature of the Archaeological Resource	2
6.	Scope of Work	3
7.	Methodology	3
8.	Health & Safety	3
9.	Reporting	3
10.	Dissemination	3
11.	Archive	3
12.	Resources to be used	4
13.	Qualification of personnel	4
14.	Insurance & Professional indemnity	4
15.	Project identification	4
16.	Monitoring	4
17.	Sources	5

**BRYNTEG CHAPEL BRYNTEG ROAD
 GORSEINON SWANSEA SA4 4FR
 WRITTEN SCHEME OF INVESTIGATION**

Planning application – 2015/0026 (Swansea)

1. Introduction

1.1 Ian Powell of 125 Gorseinon Road, Penllergaer, Swansea SA4 9AA, has commissioned Trysor heritage consultants to write a Written Scheme of Investigation relating to a condition attached to a planning application to convert Brynteg Chapel into 12 residential flats, planning application number: 2015/0026 (Swansea)

1.2 The development is at SS5870399241, north of Brynteg Road, north of Gorseinon.



Figure 1: Location of Brynteg Chapel, Gorseinon

2. Objective of the Written Scheme of Investigation

2.1 The objective of this written scheme of investigation (WSI) is to specify the method to be used for a programme of building recording.

3. The development

3.1 The development consists of conversion of the chapel at Brynteg to 12 residential flats including rear extension, car parking and associated external alterations.

4. Condition on the planning application consent

4.1 In granting approval for the application, the Local Planning Authority imposed a condition on the consent; the condition specifies the actions necessary to mitigate the impact of the development on the built resource.

No site works shall be undertaken until the implementation of an appropriate programme of building recording and analysis has been agreed with the local planning authority, to be carried out by a specialist acceptable to the local planning authority and in accordance with an agreed written specification.

Reason: The buildings are of architectural and cultural significance and the specified records are required to mitigate the impact of the development.

5. Nature of the archaeological resource

5.1 Brynteg Independent Chapel, Gorseinon is not a Listed Building. It is recorded in the National Monuments Record (NMR) as NPRN 9116, but is not recorded in the regional Historic Environment Record (HER).

5.2 There are varying histories of the original chapel (NPRN 13498). The NMR states that it was first built in 1693 at the northeastern end of the graveyard, however summaries in the online West Glamorgan archive catalogue state that *“The cause began as a branch of the church at Tirdwncyn. This later became Mynydd-bach, holding meetings in a farmhouse in the Upper Town area of Loughor. In the beginning of the eighteenth century, the congregation moved to new premises at Rhydymaerdy.”* West Glamorgan Archive services

5.3 They both agree that a chapel was built, or rebuilt, in 1815 at the northeastern end of the graveyard. The NMR records that this was rebuilt in 1847.

5.4 In 1897 the current chapel was built at the other end of the graveyard, and the old chapel was converted into a Sunday school and vestry. The original chapel was built in the simple round-headed style. It was a long-wall entry plan with doors at the outer corners. This former chapel caught fire in February 1998 and the whole building was demolished in April 1998.

5.5 The 1897 chapel was built in the Classical style with a gable-entry plan and round-headed windows.

6. Scope of Work

6.1 Historic England's *Understanding Historic Buildings: A guide to good recording practice* was used to write this Written Scheme of Investigation. They define a Level 2 record as

"...as a **descriptive record**, made in similar circumstances to Level 1 but when more information is needed. It may be made of a building which is judged not to require a more detailed record, or it may serve to gather data for a wider project. Both the exterior and interior of the building will be seen, described and photographed. The examination of the building will produce an analysis of its development and use and the record will include the conclusions reached, but it will not discuss in detail the evidence on which this analysis is based. A plan and sometimes other drawings may be made but the drawn record will normally not be comprehensive and may be tailored to the scope of a wider project.

6.2 A Level 2 record of the buildings will be made to record the interior and exteriors of the building (Historic England, 2016, p,26).

7. Methodology

7.1 The building recording will be carried out in accordance with Chartered Institute for Archaeologists' *Standard and Guidance for the Archaeological Investigation and Recording of Standing Buildings or Structures* (CIfA, 2014a) and according to the description of a Level 2 in Historic England's guide.

7.2 Colour digital photographs will be taken using a 16M pixel camera. A written record will be made on site of the photographs taken. Appropriate photographic scales will be used.

7.3 Copies of the architects drawings of the existing building will be used as a base on which additional annotations will be made.

8. Health & Safety

8.1 Trysor will undertake a risk assessment in accordance with their health and safety policy.

9. Reporting

9.1 A report on the building recording will be prepared according to the requirements of Annex 2 of the Chartered Institute for Archaeologists' *Standard and Guidance for the Archaeological Investigation and Recording of Standing Buildings or Structures* (CIfA, 2014a, p.19) following the completion of the work. Copies of the report will be provided to the client, the Regional Historic Environment Record and the National Monuments Record.

10. Dissemination

10.1 A summary of the work undertaken and its findings will be submitted to *Archaeology in Wales*, if appropriate, the annual review of archaeological work in Wales collated the Council for British Archaeology Wales (CBA Wales)

11. Archive

11.1 The archive will be deposited with the National Monuments Record, including a copy of the final report in accordance with the CIfA's *Standard and Guidance for the creation, compilation, transfer and deposition of archaeological archives* (CIfA, 2014b) and *The*

National Standard and Guidance to Best Practice for Collecting and Depositing Archaeological Archives in Wales 2017 (NPAAW, 2017). This archive will include all written, drawn and photographic records relating directly to the investigations undertaken. Digital archives will follow the standard required by the RCAHMW (RCAHMW, 2015).

12. Resources to be used

12.1 Two members of staff will undertake the building recording. They will be equipped with standard field equipment, including digital cameras, GPS and first aid kits. Trysor have access to the computer hardware and software required to deliver the completed final report and archive to a professional standard.

13. Qualification of personnel

13.1 Trysor is a Registered Organisation with the Chartered Institute for Archaeologists and both partners are Members of the Chartered Institute for Archaeologists, www.archaeologists.net

13.2 Jenny Hall (BSc Joint Hons., Geology and Archaeology, MCIfA) had 12 years excavation experience, which included undertaking watching briefs prior to becoming the Sites and Monuments Record Manager for a Welsh Archaeological Trust for 10 years. Since 2004 she has been an independent archaeologist undertaking a variety of work that includes upland survey, desktop assessments and watching briefs.

13.3 Paul Sambrook (BA Joint Hons., Archaeology and Welsh, MCIfA, PGCE) has extensive experience as a fieldworker in Wales. He was involved with Cadw's pan-Wales Deserted Rural Settlements Project for 7 years. He also undertook Tir Gofal field survey work and watching briefs. Since 2004 he has been an independent archaeologist undertaking a variety of work that includes upland survey, desktop assessments and watching briefs.

14. Insurance & Professional indemnity

14.1 Trysor has Public Liability and Professional Indemnity Insurance.

15. Project identification

15.1 The project has been designated Trysor Project No. 2017/560

16. Monitoring

16.1 Staff from Swansea LPA will be welcome to visit the site and monitor the work.

17. Sources

17.1 Non-published

NPAAW, 2017, *The National Standard and Guidance to Best Practice for Collecting and Depositing Archaeological Archives in Wales 2017*

RCAHMW, 2015, *RCAHMW guidelines for Digital Archives*, Version 1

West Glamorgan Archive Service, D/D Ind 35, D/D Z 448/5-9

17.2 Published

CIfA, 2014a, *Standard and Guidance for the Archaeological Investigation and Recording of Standing Buildings or Structures*

CIfA, 2014c, *Standard and Guidance for the creation, compilation, transfer and deposition of archaeological archives*

Historic England, 2016, Understanding Historic Buildings: A Guide to Good Recording Practice

17.3 Web based materials

Historic Wales, <http://historicwales.gov.uk/>, accessed 15/05/2017

Jenny Hall & Paul Sambrook

Tryson, May 2017

APPENDIX B: PHOTOGRAPHS



Plate 1: BTC2017_001, external view of the chapel looking northwest.



Plate 2: BTC2017_002, external view of the chapel looking northwest.



Plate 3: BTC2017_003, external view of east elevation of chapel, looking west-northwest.



Plate 4: BTC2017_004, external view of east elevation of chapel, looking west.



Plate 5: BTC2017_005, external view of north elevation of chapel, looking southwest.



Plate 6: BTC2017_006, external view of boiler house attached to north side of chapel, looking southwest.



Plate 7: BTC2017_007, external view of ancillary building to north of chapel, looking north-northwest.



Plate 8: BTC2017_008, external view of ancillary building to north of chapel, looking east-northeast.



Plate 9: BTC2017_009, External view of boiler house attached to north side of chapel, looking southeast.



Plate 10: BTC2017_010, external view of outbuilding to north of chapel, looking east-northeast.



Plate 11: BTC2017_011, external view of outbuilding to north of chapel, looking south-southwest.



Plate 12: BTC2017_012, External view of north elevation of chapel, looking south.



Plate 13: BTC2017_013, An original window in the north elevation of the chapel, looking south.



Plate 14: BTC2017_014, A ventilation aperture in the peak of the north elevation of the chapel, looking south.



Plate 15: BTC2017_015, External view of the chapel, looking southeast.



Plate 16: BTC2017_016, External view of the outbuilding to the north of the chapel, looking east-southeast.



Plate 17: BTC2017_017, External view of the west elevation of the chapel, looking east-southeast.



Plate 18: BTC2017_018, Paved area along the western side of the chapel, looking north-northeast.

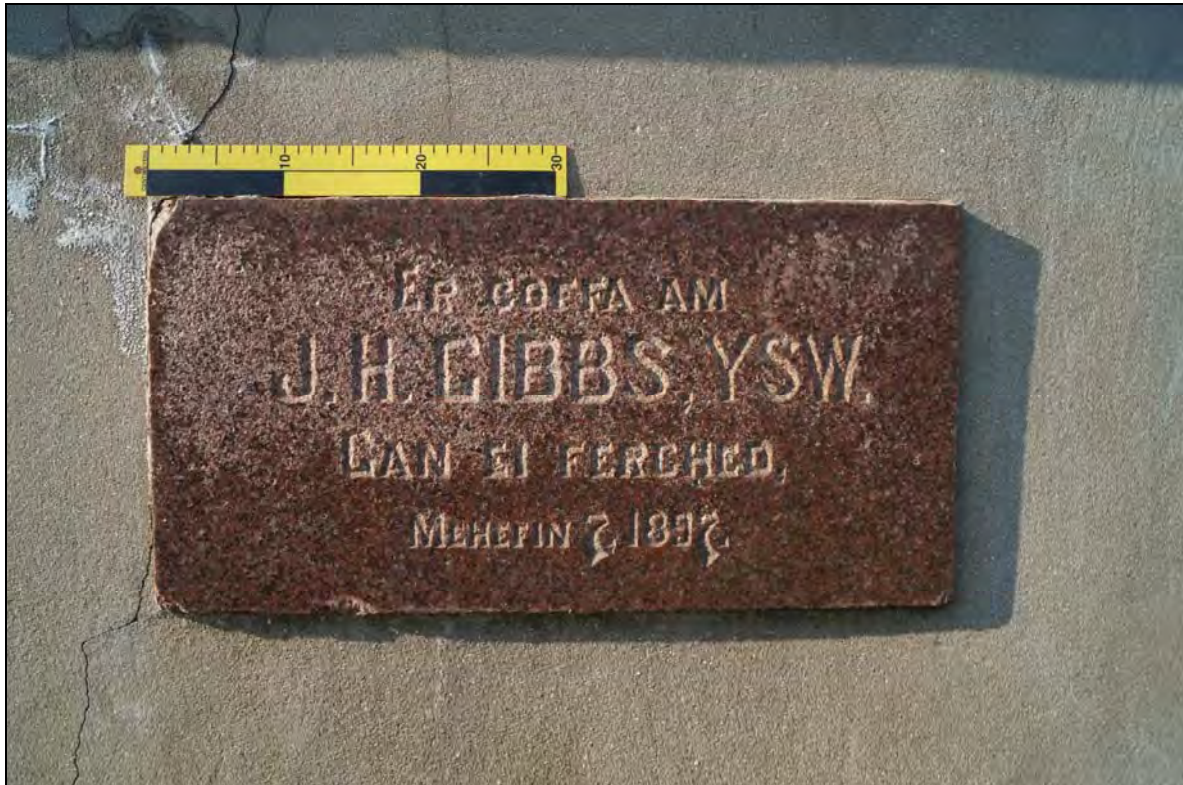


Plate 19: BTC2017_019, An inscribed memorial plaque on the south elevation of the chapel, to the west of the entrance, looking north-northeast.

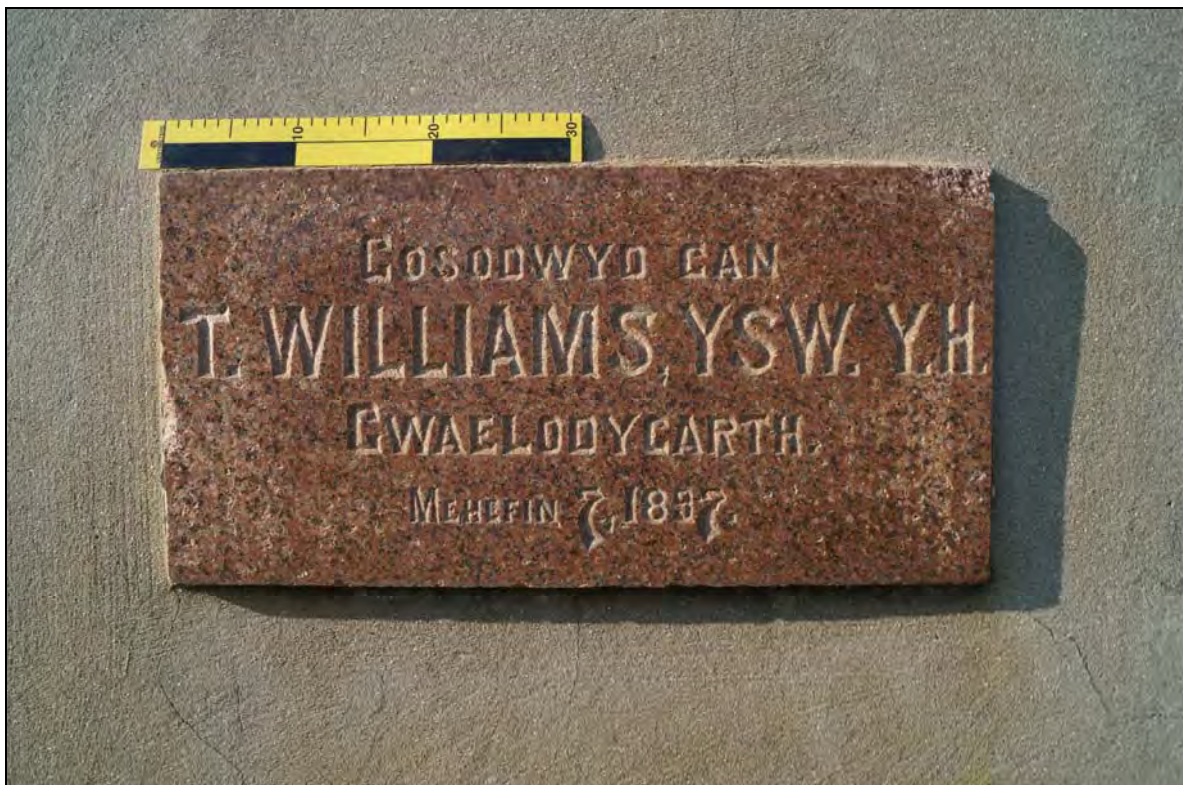


Plate 20: BTC2017_020, An inscribed foundation plaque on the south elevation of the chapel, to the east of the entrance, looking north-northeast.

*Capel Annibynnol Brynteg - Capel Brynteg, Gorseinon
Photographic Survey P/2015/0026 (Swansea)*



Plate 21: BTC2017_021, the war memorial to the south of the chapel, looking northeast.



Plate 22: BTC2017_022, the war memorial to the south of the chapel, looking north-northeast.

Capel Annibynnol Brynteg - Capel Brynteg, Gorseinon
Photographic Survey P/2015/0026 (Swansea)



Plate 23: BTC2017_023, the inscription on the war memorial to the south of the chapel, looking north-northeast.



Plate 24: BTC2017_024, the inscription on the war memorial to the south of the chapel, looking east-southeast.



Plate 25: BTC2017_025, the war memorial to the south of the chapel, looking east-southeast.



Plate 26: BTC2017_026, external view of the south elevation of the chapel, with the war memorial to the right, looking north-northeast.

Capel Annibynnol Brynteg - Capel Brynteg, Gorseinon
Photographic Survey P/2015/0026 (Swansea)



Plate 27: BTC2017_027, external view of the south elevation, looking north-northeast.



Plate 28: BTC2017_028, external view of the south elevation, looking north-northeast along the path.

*Capel Annibynnol Brynteg - Capel Brynteg, Gorseinon
Photographic Survey P/2015/0026 (Swansea)*



Plate 29: BTC2017_029, external view of the south elevation, looking north-northeast from the gateway.



Plate 30: BTC2017_030, external view of the south elevation, looking north-northeast from the road outside the gateway.

*Capel Annibynnol Brynteg - Capel Brynteg, Gorseinon
Photographic Survey P/2015/0026 (Swansea)*



Plate 31: BTC2017_031, external view of the south elevation, looking northeast from the road outside the gateway.



Plate 32: BTC2017_032, external view of the south elevation, looking north from the road outside the gateway.



Plate 33: BTC2017_033, a view of the southern burial ground wall from the road to the south of the chapel, looking northeast.



Plate 34: BTC2017_034, the pedestrian gateway leading into the chapel entrance to the south of the chapel, looking north-northeast.

*Capel Annibynnol Brynteg - Capel Brynteg, Gorseinon
Photographic Survey P/2015/0026 (Swansea)*



Plate 35: BTC2017_035, detail of the ornate cast ironwork on the pedestrian gateway leading into the chapel entrance to the south of the chapel, looking north-northeast.



Plate 36: BTC2017_036, a view from the pulpit of the interior of the chapel, looking south-southwest.



Plate 37: BTC2017_037, a view of the pulpit and "set fawr" or deacons' pews inside the chapel, looking southeast.



Plate 38: BTC2017_038, a view of the "set fawr" inside the chapel, looking southeast.



Plate 39: BTC2017_039, a view of the pulpit and "set fawr" inside the chapel, looking east.



Plate 40: BTC2017_040, a view of the pulpit and "set fawr" inside the chapel, looking north-northeast.



Plate 41: BTC2017_041, a view of the pulpit and "set fawr" inside the chapel, showing the "Duw Cariad Yw" inscription above, looking north-northeast.



Plate 42: BTC2017_042, internal view of the chapel looking east-southeast across the ground floor with the ornate gallery above, supported on cast iron pillars.

*Capel Annibynnol Brynteg - Capel Brynteg, Gorseinon
Photographic Survey P/2015/0026 (Swansea)*



Plate 43: BTC2017_043, internal view of the chapel looking west-northwest across the ground floor with the ornate gallery above, supported on cast iron pillars.



Plate 44: BTC2017_044, internal view of the chapel looking northeast across the ground floor with the ornate gallery above, supported on cast iron pillars.

Capel Annibynnol Brynteg - Capel Brynteg, Gorseinon
Photographic Survey P/2015/0026 (Swansea)



Plate 45: BTC2017_045, internal view of the chapel along the western aisle with the pews along the western wall to the left, below the gallery, supported on cast iron pillars, looking north-northeast.



Plate 46: BTC2017_046, internal view of the chapel from the eastern aisle across the central pews, towards the pulpit and "set fawr", looking north-northwest.

Capel Annibynnol Brynteg - Capel Brynteg, Gorseinon
Photographic Survey P/2015/0026 (Swansea)



Plate 47: BTC2017_047, internal view of the chapel along the eastern aisle with the pews along the eastern wall to the right, below the gallery, supported on cast iron pillars, looking north-northeast.



Plate 48: BTC2017_048, internal view of the chapel from the gallery, looking northeast.

Capel Annibynnol Brynteg - Capel Brynteg, Gorseinon
Photographic Survey P/2015/0026 (Swansea)



Plate 49: BTC2017_049, internal view of the chapel from the gallery, looking northwest.



Plate 50: BTC2017_050, internal view of the chapel from the gallery, looking north-northeast towards the pulpit.

*Capel Annibynnol Brynteg - Capel Brynteg, Gorseinon
Photographic Survey P/2015/0026 (Swansea)*



Plate 51: BTC2017_051, internal view of the chapel from the gallery, looking north-northeast towards the pulpit.



Plate 52: BTC2017_052, internal view of the chapel from the gallery, looking southwest towards the seats at rear of the gallery.

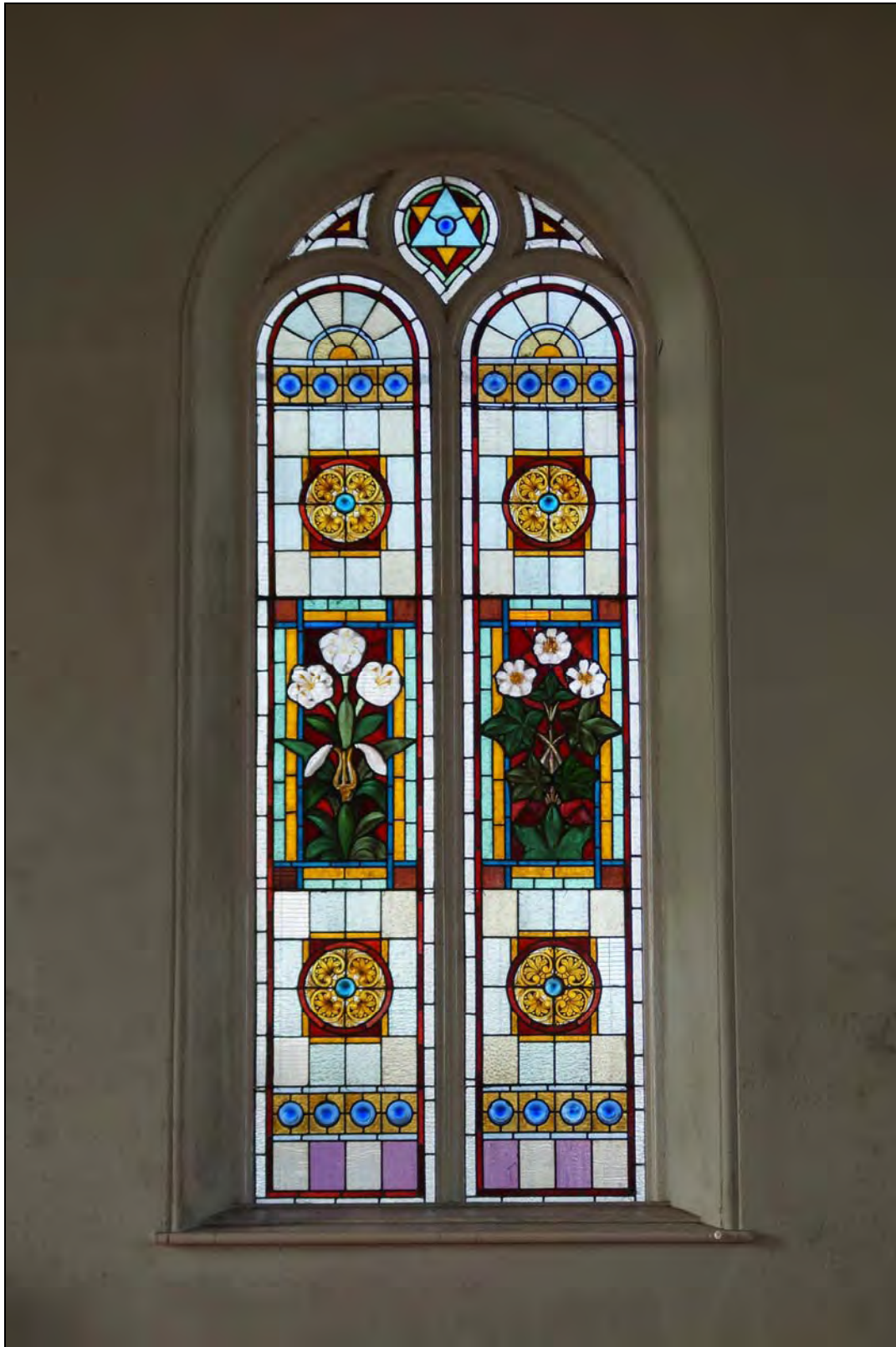


Plate 53: BTC2017_053, internal view of the stained glass window above and east of the pulpit, looking north-northeast.



Plate 54: BTC2017_054, "Duw Cariad Yw" – the inscription above the pulpit, behind an electric light pendant hanging from the ceiling, looking north-northeast.



Plate 55: BTC2017_055, gallery seats and the decorative cast-iron tracery of the eastern side of the gallery, looking east-southeast.



Plate 56: BTC2017_056, a closer view of the decorative cast-iron tracery fronting the eastern side of the gallery, looking east-southeast.



Plate 57: BTC2017_057, a view of the pulpit from the western gallery, showing the stained glass windows and "Duw Cariad Yw" inscription above the pulpit, looking northeast.

*Capel Annibynnol Brynteg - Capel Brynteg, Gorseinon
Photographic Survey P/2015/0026 (Swansea)*



Plate 58: BTC2017_058, a view of the eastern side of the ground floor from the western gallery, with the eastern gallery above, looking east-southeast.



Plate 59: BTC2017_059, a view of the western side of the ground floor from the eastern gallery, with the western gallery above, looking west-northwest.



Plate 60: BTC2017_060, a view down the upper flight of stairs from the western gallery to the landing, from where a lower flight of steps leads to the entrance lobby, looking south-southwest.



Plate 61: BTC2017_061, a view down the lower flight of stairs from the western gallery to the entrance lobby, looking east-southeast.

Capel Annibynnol Brynteg - Capel Brynteg, Gorseinon
Photographic Survey P/2015/0026 (Swansea)

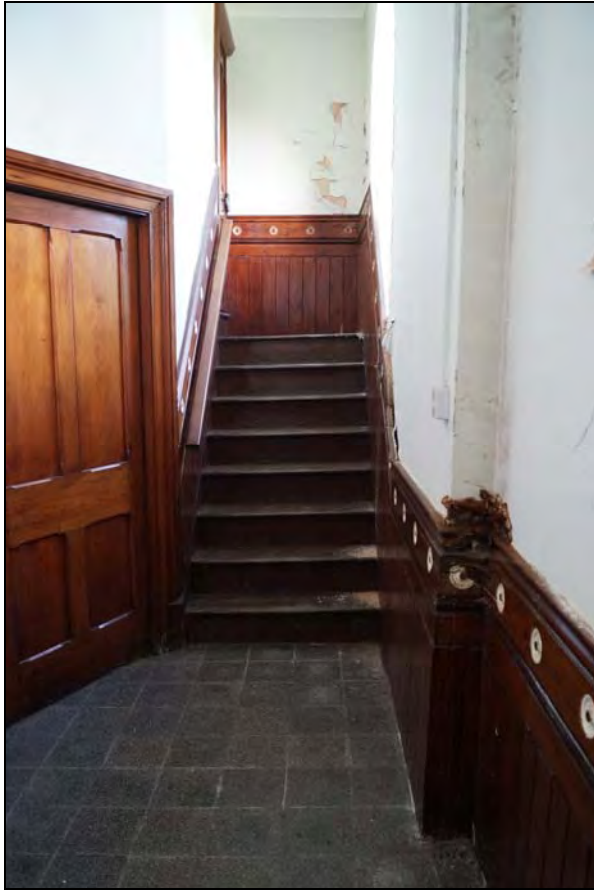


Plate 62: BTC2017_062, A view of the lower flight of stairs leading to the eastern gallery from the entrance lobby. This stairs is blocked at the landing. Looking east-southeast



Plate 63: BTC2017_063, the highly decorative, stained-glass window in the wall which originally separated the entrance lobby from the main body of the chapel, looking south-southwest.



Plate 64: BTC2017_064, the highly decorative, stained-glass window in the wall of the entrance lobby, looking south-southwest.



Plate 65: BTC2017_065, the eastern pane of the highly decorative, stained-glass window in the wall of the entrance lobby, looking south-southwest.



Plate 66: BTC2017_066, the western pane of the highly decorative, stained-glass window in the wall of the entrance lobby, looking south-southwest.

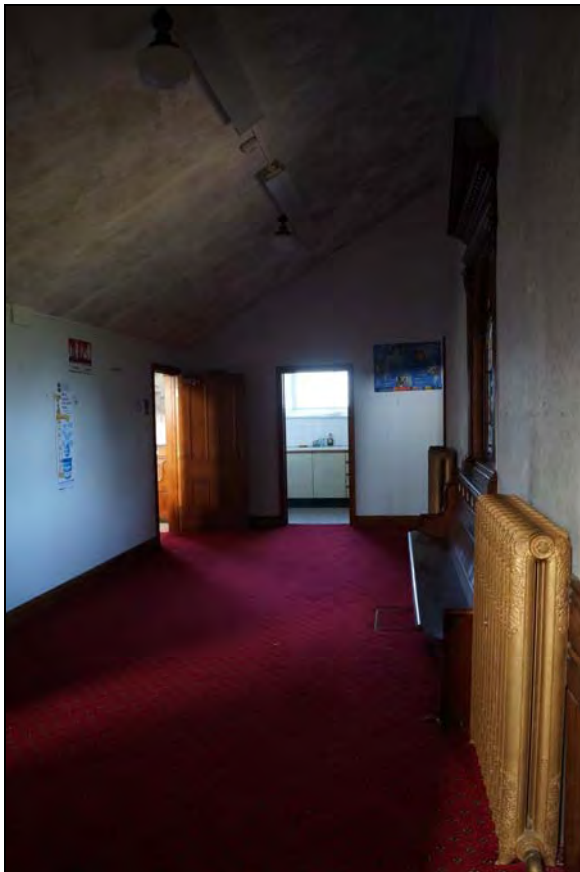


Plate 67: BTC2017_067, the inner lobby of the chapel, created in modern times by removing the rear pews and building a partition wall and new ceiling beneath the gallery. A kitchen was installed and is visible through the facing door. The main body of the chapel is entered via the door on the left here.



Plate 68: BTC2017_068, the inner lobby with the stained-glass window of the entrance lobby to the right, looking east-southeast.



Plate 69: BTC2017_069, the inner lobby and the stained-glass window of the entrance lobby. A pew removed from the chapel when it was truncated to create the inner lobby is placed below the window, with decorative radiators either side. Looking southeast.



Plate 70: BTC2017_070, the inner lobby with the stained-glass window of the entrance lobby to the right, looking southwest. The facing doors lead to separate, modern WCs.



Plate 71: BTC2017_071, a view from the front door of the chapel, looking south-southwest towards the gateway.



Plate 72: BTC2017_072, the inner lobby showing the stained-glass window of the entrance lobby, the pew below and the decorative radiators, looking southeast.



Plate 73: BTC2017_073, a close up of the western decorative radiator in the inner lobby, looking south-southwest.



Plate 74: BTC2017_074, a close up of the western decorative radiator in the inner lobby, looking southeast.



Plate 75: BTC2017_075, a close up of the western decorative radiator in the inner lobby, looking southeast.



Plate 76: BTC2017_076, a view of the western door connecting the outer and inner lobby. It would originally have led from the outer lobby into the main body of the chapel, looking southeast.



Plate 77: BTC2017_077, a view of the eastern door connecting the outer and inner lobby. It would originally have led from the outer lobby into the main body of the chapel, looking southwest.



Plate 78: BTC2017_078, a view of the chapel interior on the ground floor, with the gallery above, looking southwest.

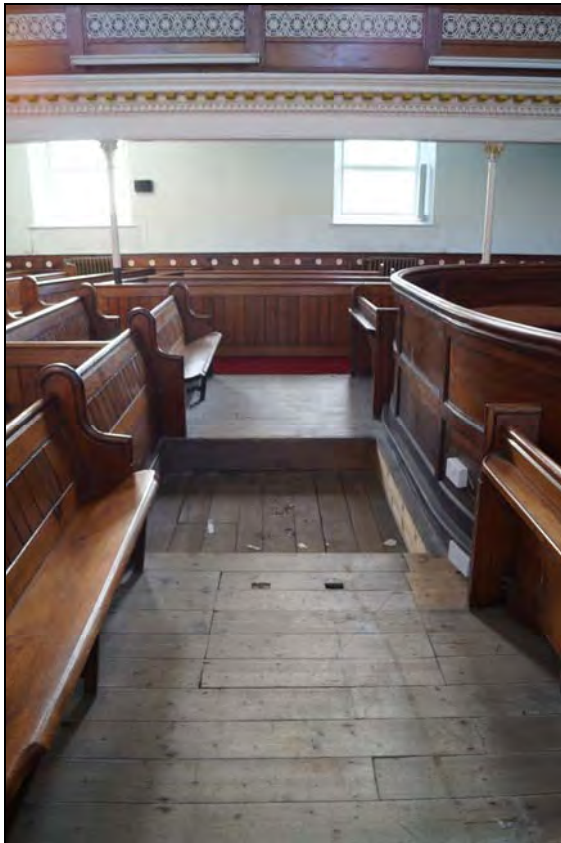


Plate 79: BTC2017_079, a view of the former position of the organ, now removed, looking west-northwest.

*Capel Annibynnol Brynteg - Capel Brynteg, Gorseinon
Photographic Survey P/2015/0026 (Swansea)*



Plate 80: BTC2017_080, an internal view looking towards the pulpit, looking northwest.



Plate 81: BTC2017_081, a close up of the decorative capital of one of the cast-iron columns supporting the gallery, looking east-southeast.

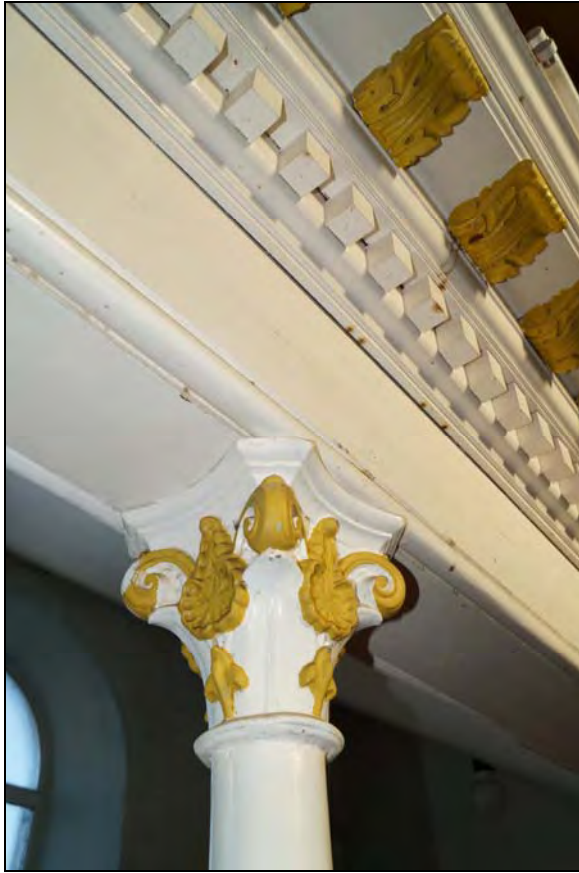


Plate 82: BTC2017_082, a close up of the decorative capital of one of the cast-iron columns supporting the gallery, looking southeast.



Plate 83: BTC2017_083, the decorative front of the eastern gallery looking east-southeast.



Plate 84: BTC2017_084, the decorative front of the eastern gallery looking east-southeast.



Plate 85: BTC2017_085, the decorative front of the eastern gallery looking east-southeast.



Plate 86: BTC2017_086, a view of the pews in the southeastern corner of the chapel, showing the painted numbers on each row, looking east-southeast.



Plate 87: BTC2017_087, a view of the centre of the chapel ceiling, looking upwards from the ground floor.

*Capel Annibynnol Brynteg - Capel Brynteg, Gorseinon
Photographic Survey P/2015/0026 (Swansea)*



Plate 88: BTC2017_088, a view of the chapel ceiling looking north-northeast.



Plate 89: BTC2017_089, a view of the décor along the front edge of the western gallery, with the centre of the chapel ceiling above.



Plate 90: BTC2017_090, a view of the chapel ceiling from the gallery, looking north.



Plate 91: BTC2017_091, a view of the chapel ceiling from the gallery, looking northeast.



Plate 92: BTC2017_092, Internal view of the pews along the northern side of the nave, looking northwest.



Plate 93: BTC2017_093, a view of the southern gallery, which faces the pulpit, showing the clock, looking south-southwest.



Plate 94: BTC2017_094, Internal view of north transept, showing the pulpit, the partition creating the vestry area and the doorway leading into the vestry, looking



Plate 95: BTC2017_095, A close-up of the chapel clock set into the front of the southern gallery. "Presented by H. Kaltenbach, Llanelly."



Plate 96: BTC2017_096, the pulpit, looking north-northeast.



Plate 97: BTC2017_097, the pulpit, looking north-northwest.



Plate 98: BTC2017_098, the passage leading from the interior of the chapel to the boiler room, with the external door to the right.



Plate 99: BTC2017_099, the boiler room and boiler, looking west-northwest.

*Capel Annibynnol Brynteg - Capel Brynteg, Gorseinon
Photographic Survey P/2015/0026 (Swansea)*



Plate 100: BTC2017_100, the carpet in the eastern aisle, looking north-northeast.



Plate 101: BTC2017_101, row number 7 of the pews on the ground floor, looking east-southeast.

*Capel Annibynnol Brynteg - Capel Brynteg, Gorseinon
Photographic Survey P/2015/0026 (Swansea)*



Plate 102: BTC2017_102, row number 32 of the pews on the ground floor, looking east-southeast.



Plate 103: BTC2017_103, the book cupboard in the northern wall of the chapel, at the end of the western aisle, with the pulpit stairs visible to the right.

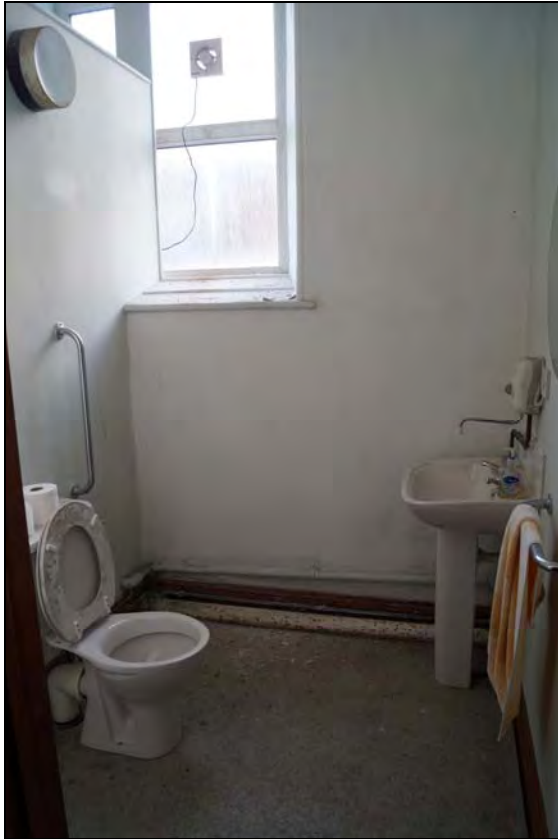


Plate 104: BTC2017_104, the northern toilet to the west of the inner lobby, looking west-northwest.



Plate 105: BTC2017_105, the southern toilet to the west of the inner lobby, looking west-northwest.



Plate 106: BTC2017_106, the kitchen to the east of the inner lobby, looking east.



Plate 107: BTC2017_107, an old doorway and surviving decorative woodwork retained in the modern kitchen, looking south-southwest.

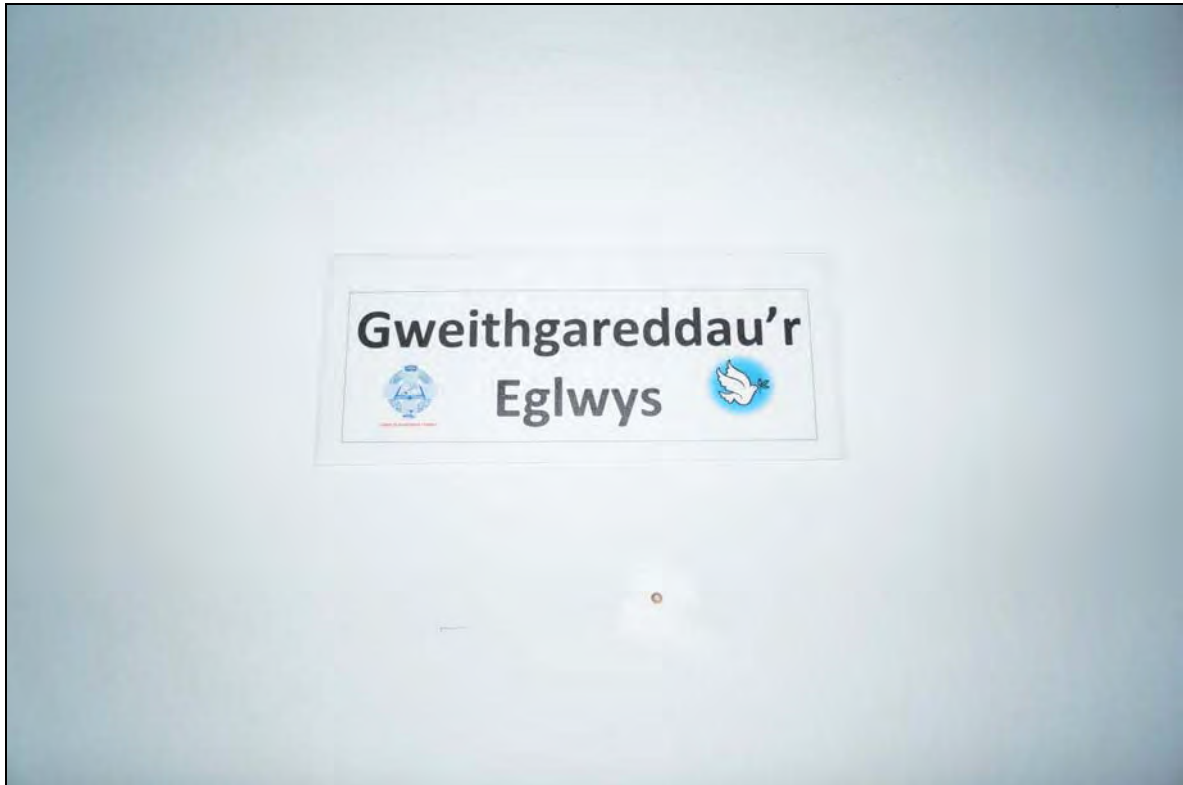


Plate 108: BTC2017_108, a poster in the inner lobby: "Gweithgareddau'r Eglwys" (Church Activities), looking north-northeast.



Plate 109: BTC2017_109, a poster in the inner lobby: "Croeso" (Welcome), looking north-northeast.

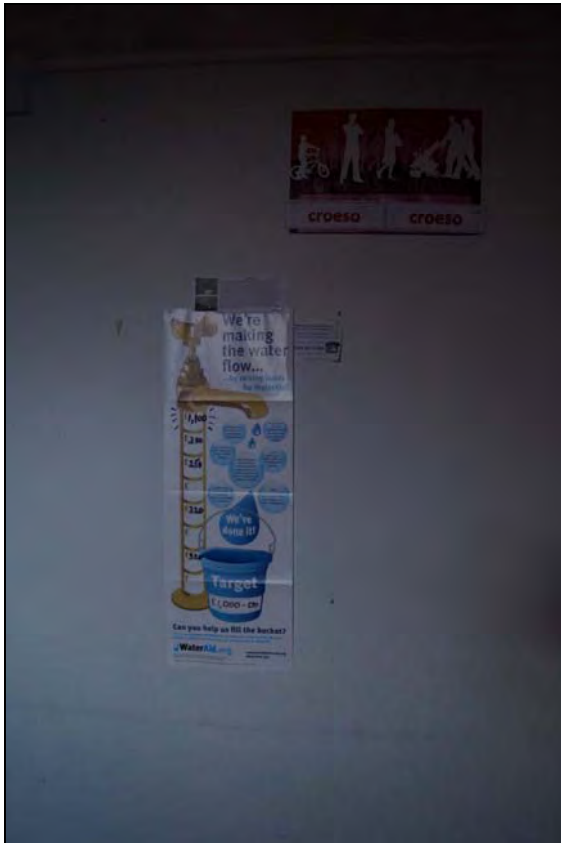


Plate 110: BTC2017_110, a fundraising poster in the inner lobby, looking north-northeast.



Plate 111: BTC2017_111, a poster in the inner lobby: "leuenctid" (Youth), looking north-northeast.

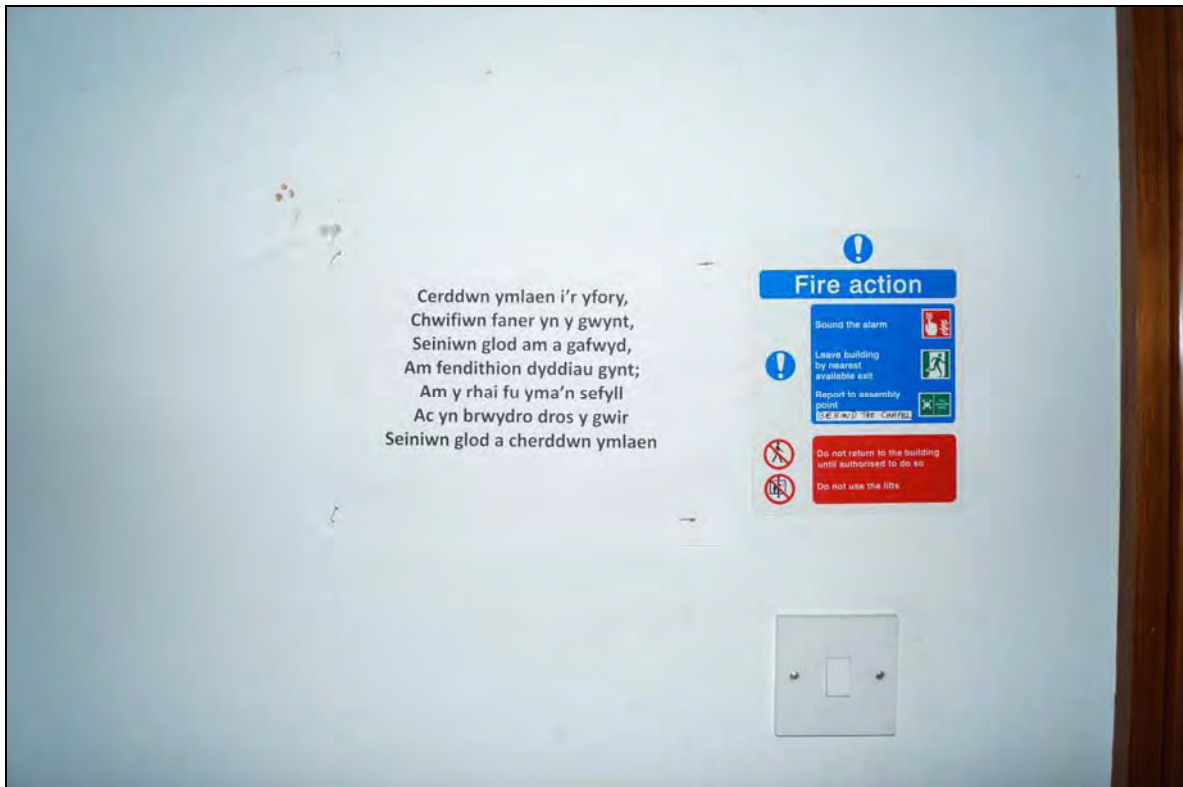


Plate 112: BTC2017_112, a poster bearing the words of a hymn in the inner lobby, looking north-northeast.

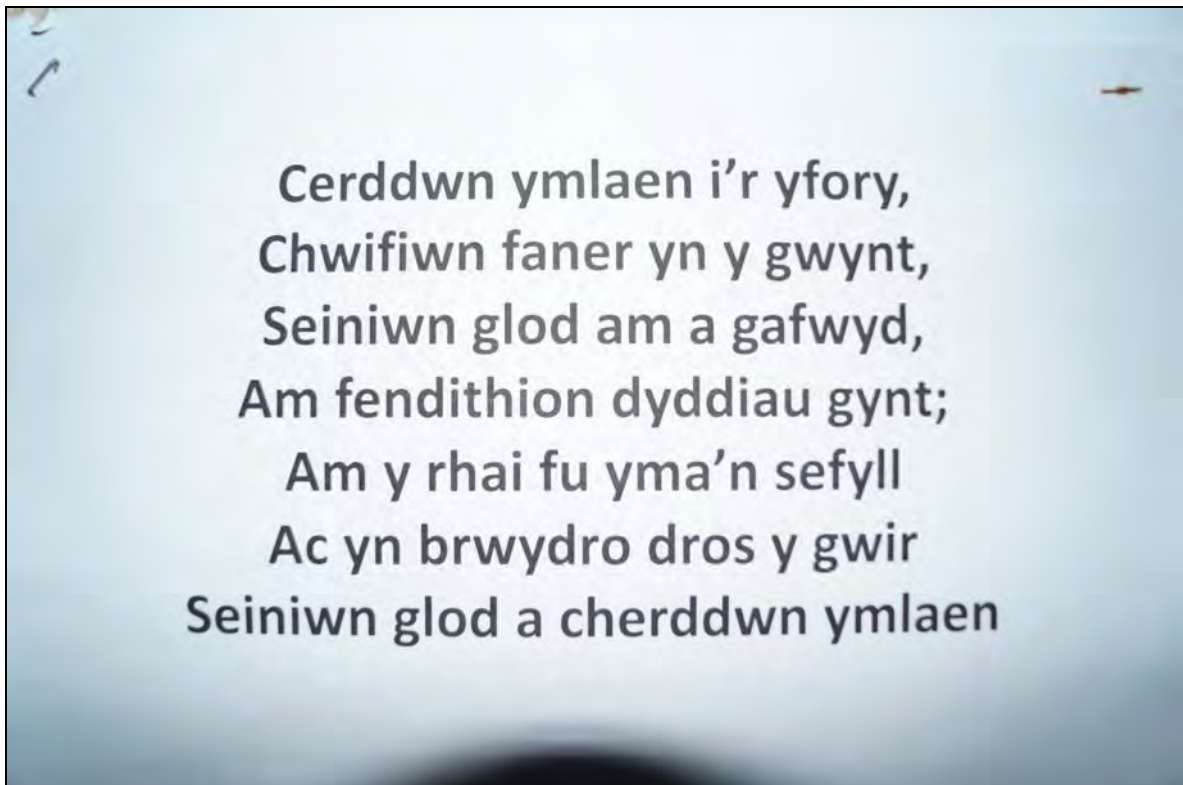


Plate 113: BTC2017_113, a poster bearing the words of a hymn in the inner lobby, looking north-northeast.



Plate 114: BTC2017_114, Fair Trade posters in the inner lobby, looking southwest.



Plate 115: BTC2017_115, a missionary poster in the inner lobby, looking east-southeast.



Plate 116: BTC2017_116, a poster in the inner lobby: "Iechyd a Diogelwch" (Health and Safety), looking north-northeast.

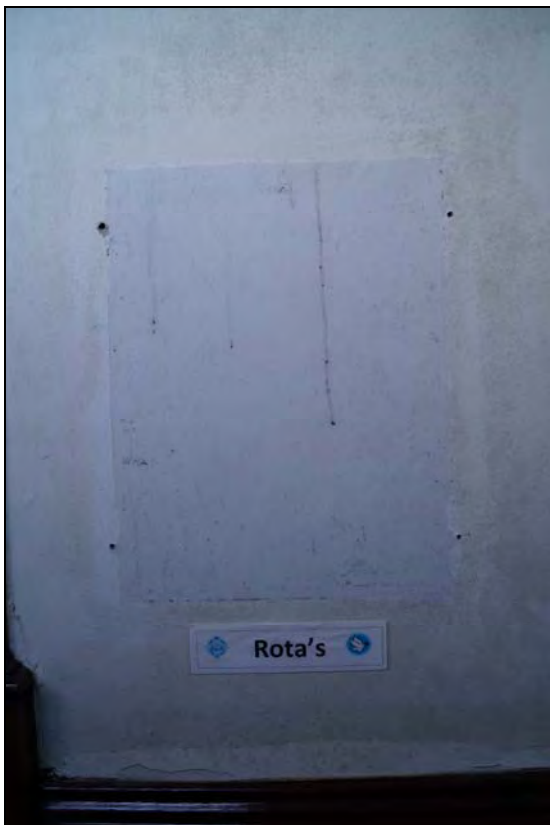


Plate 117: BTC2017_117, a poster in the inner lobby: "Rota's", looking north-northeast.



Plate 118: BTC2017_118, wet rot in the outer lobby panelling, looking southeast. Note the decorative, white-painted roundels, which feature throughout the chapel.



Plate 119: BTC2017_119, the pews in the southwest corner of the chapel. The furthest pew has been truncated to fit into the new layout created when the inner lobby was added. Looking southwest.



Plate 120: BTC2017_120, the pews in the southwest corner of the chapel, showing the row numbers, looking southwest.



Plate 121: BTC2017_121, a view of the steps at the chapel entrance door, looking south-southwest.



Plate 122: BTC2017_122, a view of the decorative metal grill in the threshold of the chapel entrance door, looking south-southwest.