

# Glan Yr Afon, Llangernyw

ARCHAEOLOGICAL MITIGATION:

LEVEL 3 BUILDING RECORD &  
ARCHAEOLOGICAL WATCHING BRIEF



Ymddiriedolaeth Archaeolegol Gwynedd  
Gwynedd Archaeological Trust

# Glan Yr Afon, Llangernyw

## ARCHAEOLOGICAL MITIGATION:

## LEVEL 3 BUILDING RECORD & ARCHAEOLOGICAL WATCHING BRIEF

Project No. G2479

Report No. 1387

Prepared for: Rhys Jones

September 2017

Written by: Spencer Gavin Smith

Illustration by: Spencer Gavin Smith & Bethan Jones




Cover Photo: View looking South West towards East Elevation of Glan Yr Afon  
(Photo Ref: G2479\_001)

Cyhoeddwyd gan Ymddiriedolaeth Achaolegol Gwynedd  
Ymddiriedolaeth Archaeolegol Gwynedd  
Craig Beuno, Ffordd y Garth,  
Bangor, Gwynedd, LL57 2RT

Published by Gwynedd Archaeological Trust  
Gwynedd Archaeological Trust  
Craig Beuno, Garth Road,  
Bangor, Gwynedd, LL57 2RT

Cadeiryddes/Chair - Yr Athro/Professor Nancy Edwards, B.A., PhD, F.S.A.  
Prif Archaeolegydd/Chief Archaeologist - Andrew Davidson, B.A., M.I.F.A.

Mae Ymddiriedolaeth Archaeolegol Gwynedd yn Gwmni Cyfyngedig (Ref Cof. 1180515) ac yn Elusen (Rhif Cof. 508849)  
Gwynedd Archaeological Trust is both a Limited Company (Reg No. 1180515) and a Charity (reg No. 508849)

Approvals Table				
	Role	Printed Name	Signature	Date
Originated by	Document Author	SPENCER GAVIN SMITH		06.10.17
Reviewed by	Document Reviewer	JOHN ROBERTS		06/10/17
Approved by	Principal Archaeologist	JOHN ROBERTS		06/10/17

Revision History			
Rev No.	Summary of Changes	Ref Section	Purpose of Issue

## CONTENTS

Non-Technical Summary .....	3
Crynodeb Annhechnegol .....	4
1 INTRODUCTION.....	5
2 METHODOLOGY.....	7
2.1 Building Record Level 3 .....	7
2.2 Watching Brief.....	7
3 LEVEL 3 RESULTS.....	8
3.1 North Elevation.....	9
3.2 South Elevation .....	10
3.3 East Elevation .....	11
3.4 West Elevation .....	14
3.5 Ground Floor Rooms .....	16
3.5.1 G01 Stables .....	17
3.5.2 G02 Outbuilding.....	19
3.5.3 G03 Outbuilding.....	20
3.5.4 G04 Cart Shed.....	21
3.6 First Floor Rooms .....	23
3.6.1 F01 Hayloft .....	24
3.6.2 F02 Store .....	26
3.6.3 F03 Store .....	27
4 WATCHING BRIEF RESULTS .....	30
5 CONCLUSION .....	31
6 SOURCES CONSULTED.....	32
APPENDIX I .....	34
Reproduction of Gwynedd Archaeological Trust written scheme of investigation (September 2016) .....	34
APPENDIX II .....	35
Reproduction of Gwynedd Archaeological Trust Photographic Metadata .....	35

## Figures

Figure 01: Reproduction of Donald Insall Associates Drawing Reference GYAS.01. Not to scale.

Figure 02: Reproduction of Donald Insall Associates Drawing Reference GYAS.01 101. Not to scale.

Figure 03: Reproduction of Donald Insall Associates Drawing Reference GYAS.01 102. Not to scale.

Figure 04: Reproduction of Donald Insall Associates Drawing Reference GYAS.01 103. Not to scale.

Figure 05: Reproduction of Donald Insall Associates Drawing Reference GYAS.01 104. Not to scale.

Figure 06: Reproduction of Donald Insall Associates Drawing Reference GYAS.01 105. Not to scale.

Figure 07: Reproduction of Donald Insall Associates Drawing Reference GYAS.01 101 with amendments to illustrate location and direction of Gwynedd Archaeological Trust photographic record. Not to scale.

## Plates

Plate 1: NE elevation Cart Shed G04 (external) (archive reference: G2479\_004).

Plate 2: NE elevation of Outbuilding G02 (archive reference: G2479\_024).

Plate 3: SW/SE elevation of Outbuilding G03 (archive reference: G2479\_026).

Plate 4: Chimney breast of G01/F01 showing scar of Outbuilding G02 and vertical crack in breast (archive reference: G2479\_046).

Plate 5: General shot of Cart Shed G04 in relation to Glan yr Afon House G01/G02/G03/F01/F02/F03 (Buildings C and B in Morriss Report) (archive reference: G2479\_001).

Plate 6: NE end of G01/F01 showing structural failings around ground floor window (archive reference: G2479\_031).

Plate 7: Central portion of G01/F01 showing entrance doorway (archive reference: G2479\_032).

Plate 8: NE end of G01/F01 showing vertical crack and slit window (archive reference: G2479\_030).

Plate 9: Relationship of external stairs, string course and structural failure (G01) (archive reference: G2479\_033).

Plate 10: Limestone quoins visible in both inner and outer faces (G01) (archive reference: G2479\_034).

Plate 11: Collapsing repair between central door of G01 and Outbuilding G02 (archive reference: G2479\_036).

Plate 12: E elevation of Cart Shed G04 (external) (archive reference: G2479\_003).

Plate 13: External staircase to Grain Store F04 (archive reference: G2479\_029).

Plate 14: NE elevation Cart Shed G04 (external) (archive reference: G2479\_005).

Plate 15: NW wall of G01/F01 showing complex phasing (archive reference: G2479\_041).

## Plates

Plate 16: Blocked doorway in NW elevation of G01/F01 with butt joint either side; scale: 1x2m (archive reference: G2479\_048).

Plate 17: NW wall of G01/F01 showing complex phasing (archive reference: G2479\_040).

Plate 18: View of Glan yr Afon from NW (archive reference: G2479\_097).

Plate 19: Fireplace Lintel; scale: (archive reference: G2479\_189).

Plate 20: Loose box in G01 Stables (archive reference: G2479\_127).

Plate 21: Stall 05 in G01 Stables (archive reference: G2479\_155).

Plate 22: Rendered feed storage area built into window opening in G01 (archive reference: G2479\_059).

Plate 23: Three horse collars hanging above chimney breast opening in G01; scale: 1x1m (archive reference: G2479\_056).

Plate 24: Stairs up to Hayloft F01 from Stables G01 (archive reference: G2479\_191).

Plate 25: Roof; scale: (archive reference: G2479\_176).

Plate 26: Roof; scale: (archive reference: G2479\_180).

Plate 27: Roof; scale: (archive reference: G2479\_177).

Plate 28: Chimney breast in end of building showing timber lintel above, reduction in width and built in oven on left of photo (G01); scale: 1x1m (archive reference: G2479\_066).

Plate 29: Cobbled floor remains in Loose box in G01 Stables; scale: 1x1m (archive reference: G2479\_141).

Plate 30: SW/SE elevation of Outbuilding G02 (archive reference: G2479\_025).

Plate 31: Internal elevation of East wall of G01 Stables from Stall 01 (archive reference: G2479\_122).

Plate 32: North elevation of Outbuilding G03 (archive reference: G2479\_027).

## Plates

Plate 33: SE elevation of Cart Shed G04 (external) (archive reference: G2479\_002).

Plate 34: SE elevation of Cart Shed G04 (internal) (archive reference: G2479\_013).

Plate 35: SW elevation of Cart Shed G04 (internal) (archive reference: G2479\_010).

Plate 36: NW elevation of Cart Shed G04 (internal) (archive reference: G2479\_008).

Plate 37: NE elevation Cart Shed G04 (internal) (archive reference: G2479\_007).

Plate 38: Butt joint between Cart Shed G04 and external access stairs, bricks visible at base of wall (archive reference: G2479\_011).

Plate 39: Cobbled surface partly revealed under sawdust covering floor of Cart Shed G04 (archive reference: G2479\_012).

Plate 40: Central portion of SE internal elevation. Access point in floor F01 Hayloft (archive reference: G2479\_077).

Plate 41: Partition with plater work, N corner F01 Hayloft (archive reference: G2479\_075).

Plate 42: Partition with plasterwork, S corner F01 Hayloft (archive reference: G2479\_076).

Plate 43: Chimney breast in F01 Hayloft (archive reference: G2479\_069).

Plate 44: Decorative plasterwork - upper and lower panels - F01 Hayloft / F03 Store; scale: 1x1m (archive reference: G2479\_081).

Plate 45: Decorated plaster to partition below mezzanine F01 Hayloft (archive reference: G2479\_086).

Plate 46: Decorative plaster - upper portion - detail - F01 Hayloft / F03 Store (archive reference: G2479\_082).

Plate 47: Representative graffiti from roof of mezzanine, engraved / F01 Hayloft (archive reference: G2479\_083).

Plate 48: Representative graffiti from roof of mezzanine, painted / F01 Hayloft (archive reference: G2479\_084).



## Plates

Plate 49: Low quality lathe and plaster wall forming corridor down NW side of building F02 Store (archive reference: G2479\_092).

Plate 50: Corridor formed on SE side of F03 Store showing timber in place (archive reference: G2479\_091).

Plate 51: Blocked fireplace with internal still in place, low quality plaster. F02 Store (archive reference: G2479\_093).

Plate 52: Low quality lathe and plaster forming internal room upstairs. F03 Store (archive reference: G2479\_089).

Plate 53: Graffiti on low quality lathe and plaster forming internal room upstairs. F03 Store (archive reference: G2479\_090).

Plate 54: External staircase to Grain Store F04 (archive reference: G2479\_028).

Plate 55: SW elevation of Grain Store F04 - upper floor - (internal) (archive reference: G2479\_016).

Plate 56: Example of graffiti from SW elevation of roof truss of Grain Store F04 - upper floor - (internal) (archive reference: G2479\_023).

Plate 57: SE elevation of Grain Store F04 - upper floor - (internal) (archive reference: G2479\_018).

Plate 58: NW elevation of Grain Store F04 - upper floor- (internal) (archive reference: G2479\_014).

Plate 59: NW/SW elevation of Grain Store F04 - upper floor (internal) (archive reference: G2479\_015).

Plate 60: SW/SE elevation of Grain Store F04 - upper floor- (internal) (archive reference: G2479\_017).

Plate 61: NE elevation of Grain Store F04 - upper floor - (internal) (archive reference: G2479\_020).

Plate 62: NE/NW elevation of Grain Store F04 - upper floor - (internal) (archive reference: G2479\_021).

Plate 63: N wall and cobbled floor in Cart Shed G04; scale: 1x1m (archive reference: G2479\_100).

## Plates

Plate 64: E opening and cobbled floor in Cart Shed G04; scale: 1x1m (archive reference: G2479\_101).

Plate 65: S wall and cobbled floor in Cart Shed G04; scale: 1x1m (archive reference: G2479\_102).

Plate 66: Lifting of Cobbles in NW corner of G04 Cart Shed; scale: 1x1m (archive reference: G2479\_196).

Plate 67: Cobbles lifted on N side of G04 Cart Shed showing depth of bedding gravel (archive reference: G2479\_198).

Plate 68: Cobbles lifted on S side of G04 Cart Shed showing depth of bedding gravel; scale: 1x1m (archive reference: G2479\_201).

Plate 69: Cobbles lifted on N side of G04 Cart Shed showing base of wall of G04 Cart Shed; scale: 1x1m (archive reference: G2479\_209).

Plate 70: Cobbles lifted in G04 Cart Shed showing base of pillar of G04 Cart Shed; scale: 1x1m (archive reference: G2479\_218).

Plate 71: Cobbles lifted on S side of G04 Cart Shed showing base of wall of G04 Cart Shed (archive reference: G2479\_217).

Plate 72: Detailed of blocked chimney in G01 showing two successive blockages; scale: 1x1m (archive reference: G2479\_055).

Plate 73: G01 Stables; scale: (archive reference: G2479\_186).

## **NON-TECHNICAL SUMMARY**

*Gwynedd Archaeological Trust (GAT) was asked by Mr Rhys Jones to undertake archaeological mitigation comprising a building record and watching brief of Glanyrafon, Llangernyw, Conwy County Borough (Figure 01; NGR SH8795169319). The property is a Grade II Listed Building (NMRW NPRN 27210; CPAT PRN 112434) and was originally constructed as a house in the 16th century and subsequently extended northwards. It was later converted into a stable, hayloft and store rooms with two single storey buildings added to the south of the building and a cart shed with granary above added to the north of the building.*

*The building record revealed that the interpretation by the Royal Commission on the Ancient and Historic Monuments of Wales (RCAHMW) from two site visits undertaken in 1971 and 2014 were broadly accurate, and a survey by Morriss in 2004 had clarified certain points of detail about the chronology of the development of the farmstead as a whole. The phasing of the buildings and the modifications which made up these phases however had not been discussed in detail. The building record undertaken identified and clarified the overall phasing and that modifications made to the main structure had fundamentally weakened it, to such an extent the construction of a replacement house was required.*

## **CRYNODEB ANNHECHNEGOL**

*Gofynnodd Mr Rhys Jones i Ymddiriedolaeth Archeolegol Gwynedd (YAG) ymgymryd â lliniaru archeolegol yn cynnwys cofnod adeiladu a briff gwylioarchaeolegol o Glanyrafon, Llangernyw, Bwrdeistref Sirol Conwy (Ffigur 01; NGR SH8795169319). Mae'r adeilad yn Adeilad Rhestredig Gradd II (NMRW NPRN 27210; CPAT PRN 112434) ac fe'i adeiladwyd yn wreiddiol fel tŷ yn yr 16eg ganrif ac wedi ei ymestyn i'r gogledd wedyn. Fe'i trosi'n ddiweddarach yn stabl, lloft gwair a storfa gyda dau adeilad unllawr yn cael ei ychwanegu i'r de o'r adeilad a codwyd sied cert gyda graenogen uwchben i'r gogledd o'r adeilad.*

*Datgelodd y cofnod adeiladu fod y dehongliad gan Gomisiwn Brenhinol Henebion Cymru (RCAHMMW) o ddau ymweliad safle a wnaed yn 1971 a 2014 yn fras gywir, ac roedd arolwg gan Morriss yn 2004 wedi egluro manau penodol o fanylion am y cronoleg o ddatblygiad y fferm yn ei gyfanrwydd. Fodd bynnag, nid oedd trafodaethau cyson yr adeiladau a'r addasiadau a oedd yn rhan o'r camau hyn wedi cael eu trafod yn fanwl. Roedd y cofnod adeiladu yn cael ei nodi ac yn egluro'r cyfnod graddol cyffredinol ac y byddai'r addasiadau a wnaed i'r prif strwythur wedi gwanhau'n sylfaenol, i raddau helaeth roedd angen adeiladu tŷ newydd.*

# 1 INTRODUCTION

Gwynedd Archaeological Trust (GAT) was asked by Mr Rhys Jones to undertake archaeological mitigation comprising a building record and watching brief of Glanyrafon, Llangernyw, Conwy County Borough (Figure 01; NGR SH87956931). The property is a Grade II Listed Building (NMRW NPRN 27210; CPAT PRN 112434) and was originally constructed as a house in the 16th century, and later converted into a stable, hayloft and store rooms with two single storey buildings added to the south of the building and a cart shed with granary above added to the north of the building.

The archaeological mitigation was been commissioned in response to conditions 6 & 7 within the grant of Listed Building Consent of Planning Application 0/42511 submitted to Conwy County Council and to enable these conditions to be discharged. The Clwyd Powys Archaeological Trust (CPAT) Development Control Archaeologist requested a Level 3 building record as described in *Understanding Historic Buildings: A guide to good recording practice* (Historic England 2016) as well as a watching brief during groundworks. Gwynedd Archaeological Trust prepared a written scheme of investigation in advance of site attendance that was subsequently approved by the CPAT Development Control Archaeologist (q.v. Appendix I).

The archaeological works conformed to the following guidance:

1. *Management of Archaeological Projects* English Heritage, 1991;
2. *Management of Research Projects in the Historic Environment: The MoRPHE Project Managers' Guide*. Historic England, 2015;
3. *Planning Policy Wales* (Edn.8, Jan 2016)
4. *RCAHMW Guidelines for Digital Archives Version 1*.
5. *Standard and Guidance for Archaeological Investigation and Recording of Standing Buildings and Structures* (Chartered Institute for Archaeologists, 2014); and
6. WO Circular 60/96 Planning and the Historic Environment: Archaeology and the Historic Environment: Archaeology.

Gwynedd Archaeological Trust is a Chartered Institute for Archaeologists *Registered Archaeological Organisation*.

.

## 2 METHODOLOGY

### 2.1 Building Record Level 3

A Level 3 building record, as defined in 'Understanding Historic Buildings: A Guide to good recording practice' (Historic England 2016) was requested. A Level 3 record is described as a descriptive and analytical record and includes.

- a photographic and descriptive record of the buildings; and
- an analysis and account of the building's origin, development and use.

An initial visit was undertaken on the 19<sup>th</sup> of September 2016, followed by a second visit on the 10<sup>th</sup> of August 2017, with a total of 193 photographic images taken (G2479\_001 to G2479\_193; see Appendix II).

### 2.2 Watching Brief

The watching brief was undertaken on the 10<sup>th</sup> of August 2017 when a total of 25 images were taken (G2479\_194 to G2479\_219; see Appendix II).

- A cobbled surface within **G04** was lifted by a mechanical excavator and was supervised by an archaeologist at all times who observed and cleaned areas as the machine cleaned back in order to identify archaeological features and finds.
- The results were recorded on GAT pro-formas and with digital SLR cameras set to maximum resolution in RAW format.

For the location of all photographic images taken, see Figure 07.

### 3 LEVEL 3 RESULTS

Note: Morris (2004) and Donald Insall Associates (2015) use differing orientations for the buildings e.g. Morris uses south as the direction of the entrance elevation of the stables / hayloft (**G01 / F01**) whilst Donald Insall Associates use east as the direction of the entrance elevation of the stables / hayloft (**G01 / F01**). In order to maintain consistency with the Donald Insall drawings, their orientation direction will be used throughout.

The roof slates are identical to those on the main building (**G01 / F01**) and the outbuildings (**G02** and **G03**, suggesting the whole structure was re-roofed in a single event.

A pink mortar visible on the east elevation of the cart shed (**G04**) and grain store (**F04**) and within the cart shed (**G04**) and on the south elevation of outbuilding **G03** suggests movement of the walls had become an issue which required a fairly recent repair to maintain the structural integrity of the building. These repairs predated the visit by Morris for his report (2004:20).



### 3.1 North Elevation

*Dimensions:*

<b>G01 / F01</b>	<i>Length: 7.19m</i>	<i>Height: 9.10m</i>
<b>G04 / F04</b>	<i>Length: 7.01m</i>	<i>Height:8.12m</i>

*Description:*

The principal building visible is the north gable of cart shed / grain store (**G04 / F04**), with the upper part of the north gable of the stables / hayloft (**G01 / F01**) visible above it (Plate 1). The gable of **G04 / F04** is all of one build, primarily constructed of locally derived limestone rubble and originally lime washed / rendered. Some of this render has subsequently been lost due to the weather removing it and there being no subsequent renewal of the render.

There is a single window (**WF04**) in this elevation with a timber lintel and stone sill. This window has subsequently been narrowed to a slit by constructing a thin wall containing bricks in its construction. A vertical crack running from the bottom left hand corner of the window is recorded on the drawing prepared by Donald Insall Associates (**GYAS.01 104 North Elevation**). The wall has suffered some movement, particularly in relation to the interface between the long and short rubble quoins linking the gable to both the east and west elevations. A pink mortar, also visible on the east elevation and within the cart shed (**G04**) suggests movement of the wall above this point had become an issue which required a fairly recent repair to maintain the structural integrity of the building. These repairs predated the visit by Morriss for his report (2004:20).

The upper part of north gable of the stables / hayloft (**G01 / F01**) is visible above the roof line of the cart shed (**G04 / F04**), and the lower part of the north gable of the stables / hayloft (**G01 / F01**) is visible within the cart shed (**G04 / F04**).

### 3.2 South Elevation

*Dimensions:*

<b>G01 / F01</b>	<i>Length: 6.88m</i>	<i>Height: 8.04m</i>
<b>G02</b>	<i>Length: 5.41m</i>	<i>Height: 4.01m</i>
<b>G03</b>	<i>Length: 4.59m</i>	<i>Height: 4.88m</i>

*Description:*

The principal building visible is the south gable of the stables / hayloft (**G01 / F01**), with the outbuildings (**G02** and **G03**) attached to the east elevation and south elevation respectively (Plate 2 and Plate 3). The stables / hayloft (**G01 / F01**) and the outbuildings (**G02** and **G03**) are primarily constructed of locally derived limestone rubble and were originally lime washed / rendered. Some of this render has subsequently been lost due to the weather removing it and there being no subsequent renewal of the render. A pink mortar visible on the south elevation of outbuilding **G03** suggests movement of the walls had become an issue which required a fairly recent repair to maintain the structural integrity of the building. These repairs predated the visit by Morriss for his report (2004:20).

The most obvious architectural features of this elevation are the contrasting stone long and short quoins which form the corners of both the chimney breast and the gable proper. The high quality of the workmanship is still apparent, with the only damage to the structure being a long almost vertical crack which has opened in the chimney breast, most probably caused by the movement of the rebuilt east and west walls of the stables / hayloft (**G01 / F01**) (Plate 4). This crack is recorded on the drawing prepared by Donald Insall Associates (**GYAS.01 103 South Elevation**).

### 3.3 East Elevation

*Dimensions:*

<b>G01 / F01</b>	<i>Length: 17.26m</i>	<i>Height:9.10m (North Gable)  Height:8.04m (South Gable)</i>
<b>G02</b>	<i>Length: 3.88m</i>	<i>Height: 4.01m</i>
<b>G03</b>	<i>Length: 4.59m</i>	<i>Height: 4.88m</i>
<b>G04 / F04</b>	<i>Length: 7.29m</i>	<i>Height: 8.12m</i>

*Description:*

The principal building visible is that of the entrance front of the stables / hayloft (**G01 / F01**), with the outbuildings (**G02** and **G03**) attached to the east elevation and south elevation respectively. The cart shed / granary (**G04 / F04**) is attached to the north elevation with both the openings into the card shed and the entrance door into the granary being on this elevation (Plate 5).

The stables / hayloft (**G01 / F01**) are primarily constructed of locally derived limestone rubble and were originally lime washed / rendered. Some of this render has subsequently been lost due to the weather removing it and there being no subsequent renewal of the render.

The probable second phase of the original three-unit (Parlour and Kitchen with central Pantry opposite the front door) sub-medieval house of Glan Yr Afon is now represented by the upper storey walls and the horizontally rectangular windows, probably with stone mullions and transoms within them which have been subsequently blocked when the vertically rectangular windows were inserted (Plate 6). The lower storey walls consist almost entirely of repairs of several different

phases which have all failed to one degree or another, leading to the eventual abandonment of the house and its conversion to a stables, hayloft and stores (Plate 7).

The diagonal set chimney is a characteristic of houses in the Vale of Clwyd constructed in the mid-17<sup>th</sup> Century, with another example at Plas Uchaf, Craig-Adwy-Wynt, Denbighshire (NMRW NPRN 27775). The horizontally rectangular windows have parallels at the recent restored house of Dolbelydir, Denbighshire (NMRW NPRN 27114).

The original house was subsequently extended northwards and a new chimney breast constructed as part of the north gable wall, with the evidence for this being visible in a vertical joint in the stonework, particularly visible on the upper storey (Plate 8) and a finely carved projecting string course on the lower storey (Plate 9). This extension was primarily constructed of locally derived limestone rubble and was originally lime washed / rendered. Some of this render has subsequently been lost due to the weather removing it and there being no subsequent renewal of the render.

The string course and slit window (**WG04**) above it, which Morris suggests is a vent to help the fire draw better (2004:11) would have served to visibly articulate the extension and rebuilding (Plate 9). The chimney stack which would have stood above the north gable has been removed and roofed over, most probably when the house was abandoned and converted to its secondary use.

It appears that modifications were made to the principal entrance at the same time as the extension northwards was constructed. The decision was taken to recess the doorway (**DG05**) and quoins added to articulate this change (Plate 7). These are still visible on the internal and external faces northern side of the doorway (Plate 10) and on the southern internal face of the southern side of the doorway. Unfortunately, this change, coupled with the extension of the building northwards which was not tied to the existing masonry, meant that there was considerable structural movement in this wall, which is visible most clearly around the lower northern (**WG03**) and southern (**WG02**) windows (Plate 9 and Plate 11).

At some point after this the outbuildings (**G02** and **G03**) were constructed, with butt joints against the main the main building (**G01** / **F01**). Primarily constructed of locally

derived limestone rubble and was originally lime washed / rendered, Some of this render has subsequently been lost due to the weather removing it and there being no subsequent renewal of the render. The suggestion by Morriss that **G02** served as a pantry (2004: 11) suggests this was constructed prior to the abandonment of the building as a house, although it is difficult without access to the interior of **G02** and **G03** to understand if **G03** was constructed at the same time as **G02**.

At the same time as the house was converted to its secondary use of as stables, hayloft and a custom built two storey cart shed (**G04**) and grain store (**F04**) was constructed of locally derived limestone rubble against the north gable (Plate 12). The building was originally lime washed / rendered. The situation of a cart shed below a grain store was found in 258 of the 279 granaries surveyed by William (1982: 240). He suggested that this kind of construction was part of a trend in the early 19<sup>th</sup> century to introduce wheeled vehicles into farming in north-east Wales (William 1982: 236). An exterior staircase to access the grain store (**F04**) was attached to the north end of the east elevation of the Stables / Hayloft (**G01 / F01**) (Plate 13).

The roof slates are identical on all four buildings (**G01 / F01; G02; G03; G04 / F04**) suggesting the whole structure was re-roofed in a single event.

### 3.4 West Elevation

*Dimensions:*

<b>G01 / F01</b>	<i>Length: 17.41m</i>	<i>Height:9.10m (North Gable)  Height:8.04m (South Gable)</i>
<b>G03</b>	<i>Length: 4.59m</i>	<i>Height: 4.88m</i>
<b>G04 / F04</b>	<i>Length: 7.20m</i>	<i>Height: 8.12m</i>

*Description:*

The principal building visible is that of the rear of the stables / hayloft (**G01 / F01**), with a single window (**WF01**) in the elevation. Outbuilding (**G03**) is attached to the south elevation with door **DG01** visible. The cart shed / granary (**G04 / F04**) is attached to the north elevation with window openings (**WF02** and **WF03**) visible in this elevation (Plate 14).

This elevation of stables / hayloft (**G01 / F01**) is clearly of two phases, with both originally lime washed / rendered. Some of this render has subsequently been lost due to the weather removing it and there being no subsequent renewal of the render.

The probable second phase of the three-unit (Parlour and Kitchen with central Pantry opposite the front door) sub-medieval house of Glan Yr Afon is now represented by the upper storey walls and the horizontally rectangular windows, probably with stone mullions and transoms within them, which have been subsequently blocked when the vertically rectangular windows were inserted (Plate 15). The lower storey walls represent the first phase of Glan yr Afon and consist of a finely jointed dark grey limestone which survives particularly at the south end of the elevation, where the bond into the south gable shows this to all be one of one building phase. Later modifications include the opening of a door with a timber lintel from what would have

been the pantry of the 17<sup>th</sup> century house (Plate 16). This was subsequently blocked, including bricks in the fabric of the blocking, but a drain out of the house left at the base.

The original house was subsequently extended northwards and a new chimney breast constructed as part of the north gable wall, with the evidence for this being visible in a vertical joint in the stonework, particularly visible on the upper storey (Plate 17). In comparison to the finely carved projecting string course on the lower storey of the east elevation (Plate 9) four long pieces of dark grey limestone rubble have been selected to replicate the effect when seen from a distance across the River Elwy (Plate 18). This extension was primarily constructed of locally derived limestone rubble and was originally lime washed / rendered. Some of this render has subsequently been lost due to the weather removing it and there being no subsequent renewal of the render.

The chimney stack which would have stood above the north gable has been removed and roofed over, most probably when the house was abandoned and converted to its secondary use.

At the same time as the house was converted to its secondary use of as stables, hayloft and a custom built two storey cart shed (**G04**) and grain store (**F04**) was constructed of locally derived limestone rubble against the north gable (Plate 12). The building was originally lime washed / rendered. The situation of a cart shed below a grain store was found in 258 of the 279 granaries surveyed by William (1982: 240). He suggested that this kind of construction was part of a trend in the early 19<sup>th</sup> century to introduce wheeled vehicles into farming in north-east Wales (William 1982: 236).

The roof slates are identical on all four buildings (**G01 / F01; G02; G03; G04 / F04**) suggesting the whole structure was re-roofed in a single event.

### **3.5 Ground Floor Rooms**



### 3.5.1 G01 Stables

#### *Dimensions:*

<i>Length: 12.71m</i>
<i>Width: 5.00m</i>
<i>Height: 2.67m</i>

#### *Description:*

A six stall stable with the horses facing across the building (Type 2 in William 1982:164-166) (Plate 73) and a separate loose box at the north end, which has a wooden manger and slate feeding trough attached to the east wall (Plate 20). The stall dimensions conform to the measurements of provided in William (1982:169) and all have both wooden mangers and slate feeding troughs attached to the east wall and (Plate 21) as a representative example.

Other additions to the interior for this phase of use include a plastered storage box to hold feed bags under **WG02** (Plate 22) and brackets for three horse collars above the lintel of the south gable fireplace (Plate 23). The National Building Record photographed the same collars hanging here in 1954 (NMRW C402338).

A narrow set of stairs at the northern end of **G01** provides access to the upper floor **F01** through a hole in the floor (Plate 24).

The 17<sup>th</sup> century internal arrangement was identified in during a site visit in 1971 as a three-unit house, with a Parlour at the north end and Kitchen at the south end and central Pantry opposite the front door (NMRW C402337). The visible evidence for this phase is mainly contained within the ceiling timbers and elucidated by Morriss (2004: 15). Briefly, retained within the principal ceiling beams are the mortice holes for the plank and muntin partitions which would have divided the building into the individual rooms (Plate 25). Most of the floor joists for **F01** above are original (Plate

26), although there have been repairs inserted here and in in other locations as and when required (Plate 27).

The fireplaces at the southern (Plate 72) and the northern (Plate 28) end of the building survive, but show signs of phased blocking, where the grate space has been made smaller and smaller over time. There are traces of a cobbled stone floor in the loose box (Plate 29), and other evidence may be identified during the archaeological watching brief to the undertaken. The original location of the stairs was not identified by Morriss (2004:15), and could not be identified during this building recording survey. Evidence for their position, orientation and construction may come to light during the archaeological watching brief to the undertaken.

The extension of the building northwards and the construction of the additional bay containing a large fireplace greatly extended the Parlour area (Plate 20). However, because of the modifications to the principal and entrance and the lack of coursing to tie the two phases together, this caused structural movement throughout the building, but particularly the east wall and roof. There are 'Witches Circles' as graffiti visible on the underside of the ceiling (Plate 27).

### 3.5.2 G02 Outbuilding

*Dimensions:*

<i>Length: 3.37m</i>
<i>Width: 3.01m</i>
<i>Height: 4.01m</i>

*Description:*

A single storey building attached partly to the east elevation of the stables (**G01**) and partly to the north east corner of outbuilding (**G03**) (Plate 30). Due to the partly collapsed roof, this structure was unsafe to enter. The drawing prepared by Donald Insall Associates (**GYAS.01 101 Ground Floor Plan**) does not provide any evidence for internal fittings. Morris states that this building served as a pantry (2004:11) although his report does not state if he was able to access the interior at this time. There is an external access door (**DG07**) on the eastern side (Plate 30) and an internal access door from **G01** on the western side (Plate 31) and a single light window in the northern wall (**DG06**) (Plate 2).

### 3.5.3 G03 Outbuilding

*Dimensions:*

<i>Length: 3.87m</i>
<i>Width: 3.73m</i>
<i>Height: 4.88m</i>

*Description:*

A single storey building attached partly to the east elevation of the stables (**G01**) and partly to the south west corner of outbuilding (**G02**) (Plate 4 and Plate 32). Due to the partly collapsed roof, this structure was unsafe to enter. The drawing prepared by Donald Insall Associates (**GYAS.01 101 Ground Floor Plan**) shows a WC fitted in the south east corner behind door **DG03**. Morris does not suggest an earlier use for this building or if he was able to access the interior (2004:13). There are external access doors on the eastern (**DG04**) and western (**DG01**) sides (Plate 3 and Plate 32) and a single light window in the southern wall (**WG01**) (Plate 3).

### 3.5.4 G04 Cart Shed

#### *Dimensions:*

<i>Length: 5.86m</i>
<i>Width: 6.64m</i>
<i>Height: 1.95m</i>

#### *Description:*

A custom built cart shed (**G04**) below the grain store (**F04**) with both stories constructed at the same time (Plate 33). The situation of a cart shed below a grain store was found in 258 of the 279 granaries surveyed by William (1982: 240). The cart shed is of two bays (**SOG01** and **SOG02**), and these are articulated on the east elevation by fairly flat three-centred arches with worked stone voussoirs (Morriss 2004: 19). Behind the arches is a large full width chamfered timber beam which supports the roof of the cart shed (Plate 34) and shows signs of reuse, having mortice holes cut into it at various points along its length. Beams also support the floor at the southern end of the building and through the centre, where a single rectangular post on a pad post, has later been supplemented by a round, partly debarked tree branch inserted immediately east of it (Plate 35). The floor joists rest on the beams, and run directly into the north gable wall as there is no beam on this side of the roof / floor structure (Plate 36). The recess in the north gable wall identified by Morriss for the storage of grease or oils to service the machinery stored in the cart shed (2004: 19) is still open, with a stone sill and timber lintel (Plate 37)

The walls show signs of repair and consolidation, particularly visible on the lower part of the north gable wall where a pink mortar has been used along the full length of the wall and wrapping around the pier on the north cart shed opening. The pink mortar has also been applied in limited quantities to the lower part of the central pillar. These repairs predated the visit by Morriss for his report (2004:20). There are

signs of building movement on the southern side of cart shed opening **SOG01**, where repairs have been undertaken using brick inserted into the lower courses of the wall (Plate 38). The floor has a cobbled stone surface (Plate 39).

## 3.6 First Floor Rooms

### 3.6.1 F01 Hayloft

#### *Dimensions:*

<i>Length: 8.77m</i>
<i>Width: 5.81m</i>
<i>Height: 5.42m (Max)</i> <i>Height: 1.93m (Min)</i>

#### *Description:*

A room which extends over more than half of the upper floor area of the building. The existing access from the floor below (**G01**) consists of a hole in the floor with a narrow set of stairs (Plate 40). Rooms **F02** and **F03** are accessed by doors in the original partition wall at the southern end of the room (Plate 41). There is visible evidence for the original window arrangements, particularly in the western wall to the south of **WF01** (Plate 42). Morriss (2004: 16) suggests that the two western bays made up the 'great chamber', not including the later bay added on the northern end of the building. The chimney breast for the Parlour fireplace at the northern end of the building projects out into the space (Plate 43).

Original wall paintings are visible on the southern partition between **F01** and **F02/F03** and also on the western wall. Richard Suggett, Investigator of Threatened Buildings at the RCAHMW suggests that the painting on the southern partition date may date to the 19<sup>th</sup> century (Plate 44) and those on the western wall in a blue floral design may date to the mid-18<sup>th</sup> century, best described as 'fictive' wallpaper (a design painted to represent wallpaper) (Plate 45). Witches circles, and other graffiti are also visible on various walls (Plate 46 and the low ceiling to the north of **F03** within **F01** (Plate 47 and Plate 48).

There is a clear distinction between the top of the stone wall plate and the timber roof components. The visible evidence for the roof structure was elucidated by



Morriss (2004: 14). Briefly, all the roof trusses are different but generally support two tiers of trenched purlins and a ridge piece. Three of the trusses all use a combination of either king or queen posts as the vertical members, whilst the fourth consists simply of a tie-beam, principal rafters and a collar (Morriss 2004:14).

### 3.6.2 F02 Store

*Dimensions:*

<i>Length: 2.84m</i>
<i>Width: 4.45m</i>
<i>Height: 5.42m (Max)</i> <i>Height: 1.93m (Min)</i>

*Description:*

A store room constructed using the northern wall of the 19<sup>th</sup> century store (**F02**) to form its southern wall and accessed through a doorway on the eastern side of **F02**. (Plate 49 and Plate 50). The west wall of the room is constructed in lath and plaster and appear to date from the 19<sup>th</sup> century conversion of the building to a stables (**G01**) and hayloft (**F01**). The plaster walls are covered in historic graffiti, which could not be accessed due to the weak floor in this room. There is a large fireplace, now blocked, in the southern wall (Plate 51). This room has no ceiling, and is open to the main roof of the building **G01/F01**.

### 3.6.3 F03 Store

*Dimensions:*

<i>Length: 2.64m</i>
<i>Width: 3.30m</i>
<i>Height: 5.42m</i>

*Description:*

A store room constructed using part of the 17<sup>th</sup> century partition wall which ran the full width of the building and accessed through door **DF01** (Plates 41 and 42). The north, west and east walls of the room and the ceiling are constructed in lath and plaster and appear to date from the 19<sup>th</sup> century conversion of the building to a stables (**G01**) and hayloft (**F01**) (Plate 52). The plaster walls are covered in historic graffiti, examples of which is provided here (Plate 53). A small two light and mesh covered window is situated at the north end of the west wall.

## F04 Grain Store

### *Dimensions:*

<i>Length: 7.20m (West Wall)</i>	<i>Length: 7.29m (East Wall)</i>
<i>Width: 7.01m (North Gable)</i>	
<i>Height: 4.47m</i>	

### *Description:*

A custom built grain store / granary above the cart shed (**G04**) (Plate 33), comparing very closely to the description and location of an idealised granary as described by William (1982: 239-244). The situation of a grain store above a cart shed was found in 258 of the 279 granaries surveyed by William. Prior to this in north-east Wales, grain was usually stored within the farm house (1982: 240).

The room is accessed by an external stair attached to the north end of the east elevation of the Stables / Hayloft (**G01 / F01**) (Plate 54). The door (**DF03**) has a latch with no external handle, meaning the latch is lifted by inserting a finger into a hole drilled in the door. Below this is the remains of a padlock hasp, and William states that: 'Even today (1982), the granary is usually the only building on the farmstead to be locked' (William 1982:243). Internally the walls are smoothly plastered to ensure that the dangers of insect infestation were kept to a minimum (William 1982: 241-242). The plasterwork has crazed on all four walls and failed in places where water ingress through the damage to the roof has allowed sufficient quantities of water to penetrate (Plate 55). The plaster walls are covered in historic graffiti, an example of which is provided here (Plate 56). The windows, one in the east wall (**WF05**) (Plate 57) and two in the west wall (**WF02** and **WF03**) (Plate 58), are fitted with diamond holed metal grills, and this measure, along with the lining of the lower part of the wall with slate slabs set on edge at the junction of the floor boards – and in the case of this example but not in the two examples William identified – metal reinforcement

covered over with a cement render was also included (Plate 59) was designed to prevent vermin penetrating this grain store at this vulnerable point (William 1982: 242). The grain scales are still within the room (Plate 60).

The floor is made of wooden floorboards (Plate 61), and doubles as the roof of the cart shed below. A window in the north gable (**WF04**) was later reduced from a full size window to a narrow slit, although the slate window sill, also present on the other windows, remains (Plate 61).

The roof is supported by a single king-post truss with raking purlins, which is bolted together and has the appearance of having been made elsewhere and subsequently brought to site and assembled (Plate 62). The truss has historic graffiti on it, an example of which is provided here (Plate 56). The description of the roof structure by Morriss 2004: 19) is still applicable, with a single tier of chocked purlins and a ridgeboard. The roof slates are identical to those on the main building (**G01 / F01**) and the outbuildings (**G02** and **G03**, suggesting the whole structure was re-roofed in a single event.

## 4 WATCHING BRIEF RESULTS

The watching brief within **G04** was undertaken on 11.08.2017. The floor was swept clean to reveal a well-constructed cobbled surface (Plates 63 to 65). Removal of the cobbled surface began in the north west corner of the building (Plate 66), and revealed that the cobbles were all large in size, ranging between 10 and 15cm in circumference around their longest axis. The cobbles had been set into a fine bed of pea gravel and the floor had been laid to a very high standard (Plate 67). In the south western corner the cobbled surface had been laid under the northern wall of **G01/F01** where it bowed outwards and a glass bottle placed in this space above the cobbles but under the bow overhang (Plate 68). The bottle, made for 'Day & Sons' of Crewe, dates from after 1880, when Day & Sons relocated their equine medicine business to Crewe from London (<http://cosgb.blogspot.co.uk/2011/02/day-sons-crewe-limited.html>). The bases of the openings from SOG01 and SOG02 were exposed and photographed (Plates 69 to 71). No other finds or features were recorded.

## 5 CONCLUSION

The survival of Glanyrafon, unmodernised and visibly displaying both internally and externally the evidence for its construction, extension, modification and decay has meant it has provided important evidence on both house and on others which it resembles typologically. The original house constructed in the early 17<sup>th</sup> century is still the core of the structure, with west elevation providing the best evidence for a half-timbered upper storey being subsequently replaced by a limestone rubble wall containing evidence of blocked up windows and traces of exterior whitewash.

The modifications undertaken when the house was extended northwards unfortunately also set in train the structural problems which subsequently required the construction of a replacement house immediately to the south. The removal of the north gable wall and the lack of construction work undertaken to tie the original building to its extension meant the two would eventually try and separate themselves, a situation exacerbated by the substantial chimney breast inserted in the north gable wall of the extension which helped pull the two structures apart. In addition, the decision to create a recessed entrance for the main door in the east elevation by removing the outer skin of stonework caused massive structural movement in the east elevation as the weight of the building transferred through this weakened point. The structural movement was so great it eventually caused the south gable to crack, opening up the chimney flue at the same time.

Although the structural damage had rendered the building uninhabitable by the occupants, the building had reached a point of equilibrium in its movements. With a re-slatted main roof, the removal of the south gable chimney stack and the construction of a two storey cartshed against the southern gable the main building served as stables, with farmhands occupying the upstairs rooms and a grain store being constructed above the cartshed.

The building survived in this condition until the middle of the 20<sup>th</sup> century, when it was photographed for the National Building Record, and remained in substantially the same condition when surveyed by the RCAHMW in 1971, Morriss in 2004 and again for this report in 2016.

## 6 SOURCES CONSULTED

CADW 1999 *Stables and Cartshed at Glan yr Afon, Llangernyw*, Listed Building **21484**

Conwy County Council *Planning Application* **0/42511**

CPAT 2004 *Llangernyw, Glan yr Afon, assessment project 2004*, PRN **112434**

Chartered Institute for Archaeologists, 2014, *Standards and Guidance for Archaeological Watching Brief*

Chartered Institute for Archaeologists, 2014. *Standard and guidance for the archaeological investigation and recording of standing buildings or structures* (

Donald Insall Associates Drawing Reference **GYAS.0 101 to 105**

English Heritage, 1991, *Management of Archaeological Projects*

Green, P. 2011 Day & Sons Crewe, Limited [Online] Available from:  
<http://cosgb.blogspot.co.uk/2011/02/day-sons-crewe-limited.html>

Historic England, 2015, *Management of Research Projects in the Historic Environment* (MoRPHE)

Historic England 2016 *Understanding Historic Buildings: A Guide to Good Recording Practice*

Historic Environment Record – Clwyd-Powys Archaeological Trust, 41 Broad Street, Welshpool, Powys, SY21 7RR

Historic Environment Record - Gwynedd Archaeological Trust, Craig Beuno, Garth Road, Bangor, Gwynedd LL57 2RT

Morriss, R. K. 2004 'Glan yr Afon, Llangernyw, Denbighshire: An Outline Archaeological & Architectural Assessment', *Mercian Heritage Services* **229**, Bromlow.

NMRW 1971 *Descriptive note and pencil drawing of floor plan, showing periods of construction, for Glan Yr Afon, Llangernyw*, **C402337**

NMRW 1954 *Photo survey of Glan Yr Afon, Llangernyw*, **C402338**

NMRW 2014 *Glanyrafon (Old House)*, NPRN **27210**

RCAHMW 2015 *Guidelines for Digital Archives, Version 1*

Smith, P. 1975 *Houses of the Welsh Countryside*, Royal Commission on the Ancient and Historical Monuments in Wales, HMSO, London.

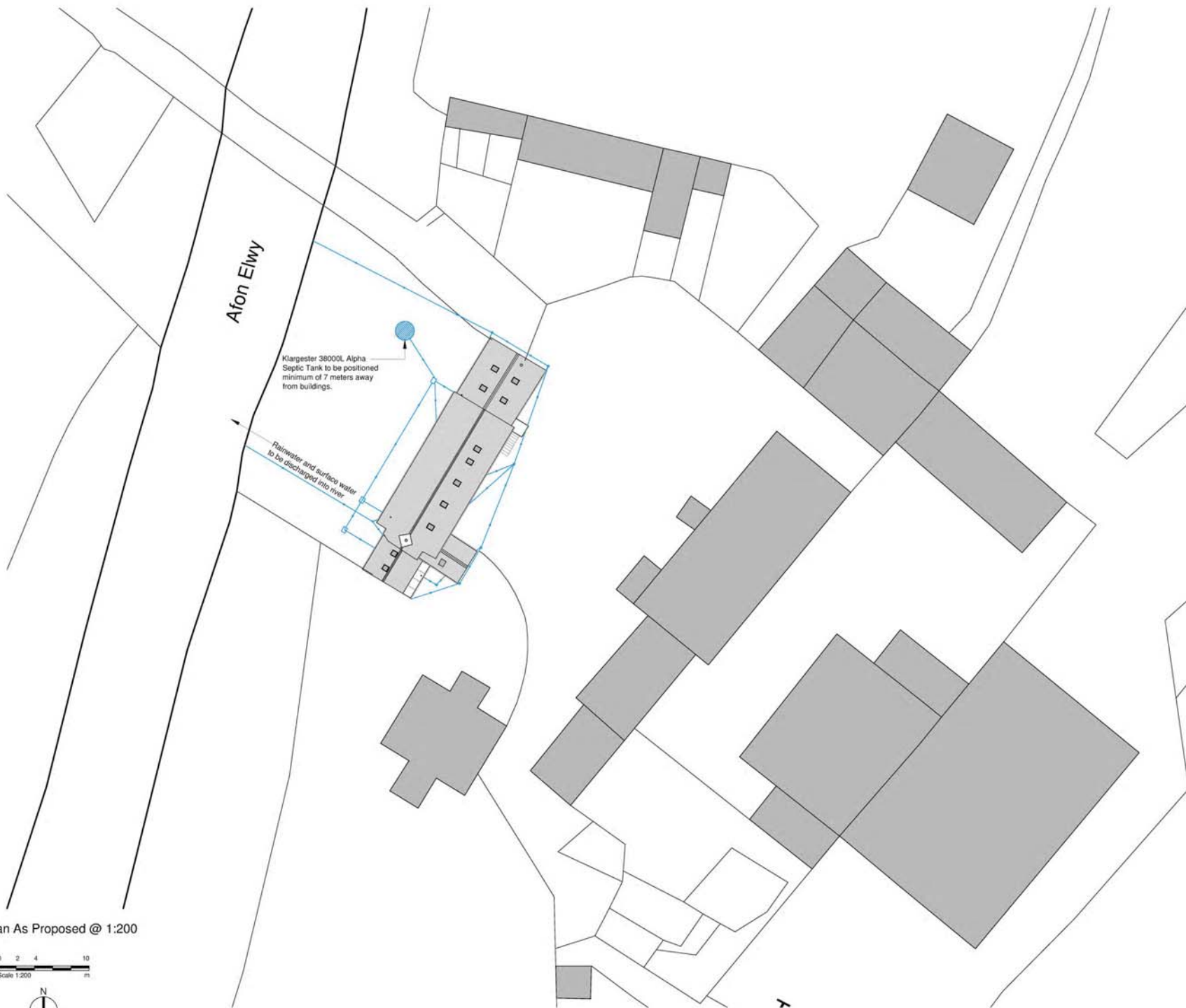


Suggett, R. and Dunn, M. 2014 *Discovering the Historic Houses of Snowdonia: the North-west Wales Tree-ring Dating Project*, Royal Commission on the Ancient and Historical Monuments of Wales, RCAHMW / DOWHG, Aberystwyth.

Welsh Government 2014 [Online] *Planning Policy Wales 2014*. Available from:  
[http://wales.gov.uk/topics/planning/policy/ppw/?lang=en;](http://wales.gov.uk/topics/planning/policy/ppw/?lang=en)

Welsh Office 1996 [Online] *Welsh Office Circular 60/96 Planning and the Historic Environment: Archaeology*. Available from:  
[http://wales.gov.uk/topics/planning/policy/circulars/welshofficecirculars/circular6096/?lang=en.](http://wales.gov.uk/topics/planning/policy/circulars/welshofficecirculars/circular6096/?lang=en)

William, E. 1982 *Traditional Farm Buildings in North-East Wales 1550-1900*, National Museum of Wales, Cardiff.



Site Plan As Proposed @ 1:200

0 2 4 10  
Scale 1:200  
m



**Notes:**  
 1 Any dwg format drawing is to be read only in conjunction with and at the scale of the accompanying pdf.  
 2 Status 'C' drawing (Construction):  
 All dimensions are to be checked on site by the contractor, scaling is for Planning purposes only.  
 Unless otherwise indicated, all dimensions are in millimeters.  
 All information on this drawing is to be read in conjunction with the relevant Donald Insall Associates specification and 'trade contractors' drawings and information by specialists.  
 3 In the event of any query, please contact us immediately.  
 4 This drawing contains survey information by others and is to be used solely for the purposes for which it was issued.  
 © 2015 DONALD INSALL ASSOCIATES LTD

**CONWY COUNTY BOROUGH  
 COUNCIL  
 DEVELOPMENT CONTROL**  
 RECEIVED: 23/02/2016  
 APPLICATION NO: 0142510  
 A16/15

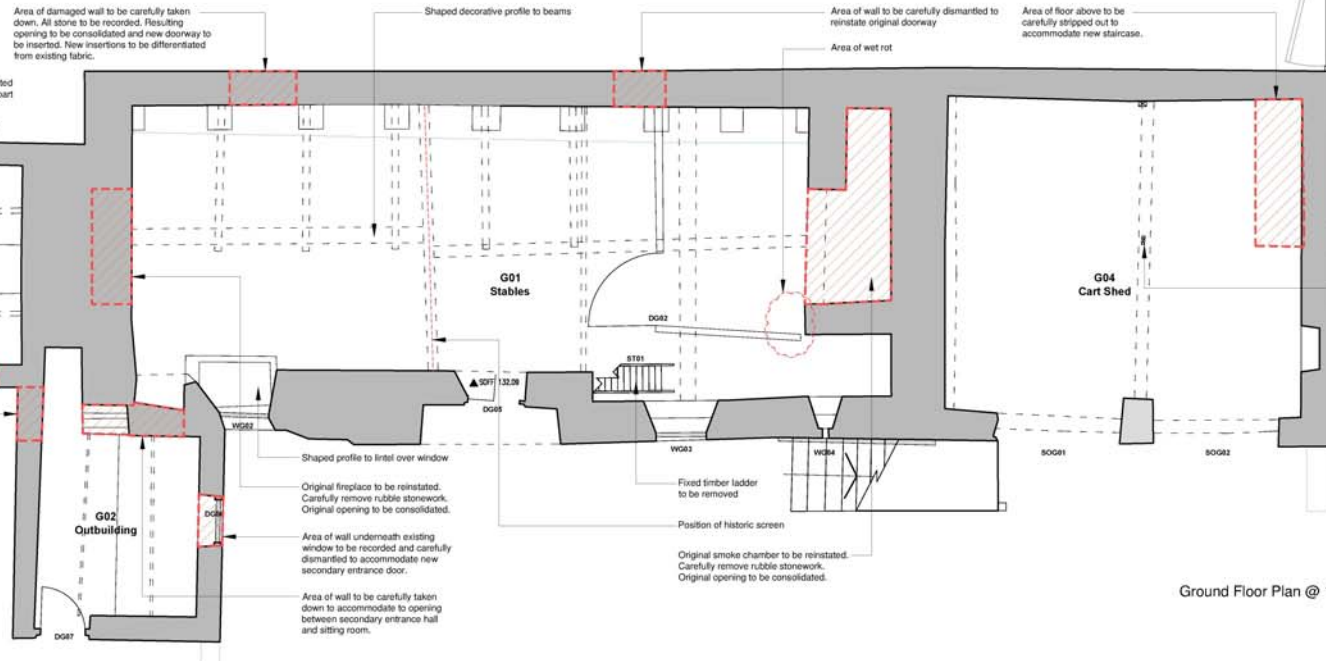
Rev	Date	Drawn	Auth	Revision
A	24.11.2015	GRR	MTO	Position of septic tank & soakaways shown.
-	13.11.2015	GRR	MTO	Issued to Planning

**Donald Insall Associates**  
 Chartered Architects and Historic Building Consultants  
 Y Becws, Pool Lane, Conwy LL32 8PZ  
 T: (+44)01492 592 378 [www.insall-architects.co.uk](http://www.insall-architects.co.uk)

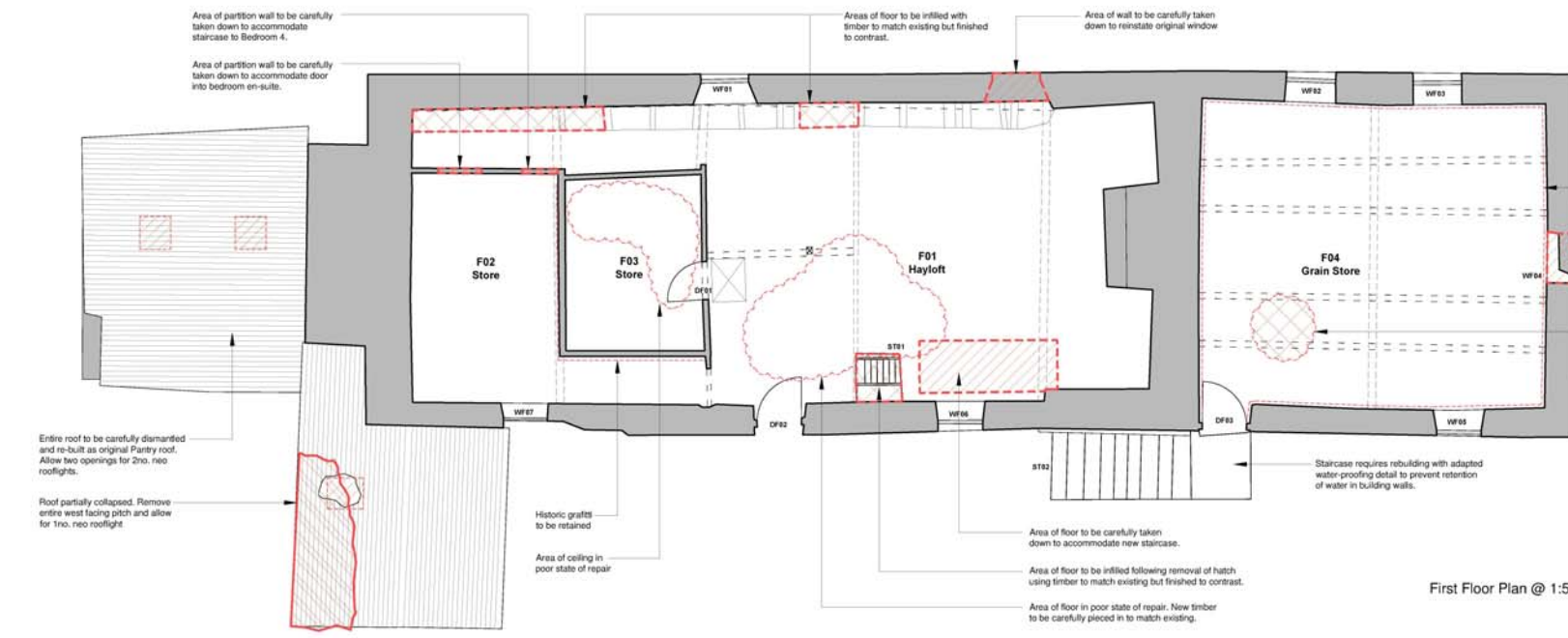
Glan yr Afon Stables and Cart Shed  
 Conservation and Conversion Project  
 Site Plan As Proposed

Drawing Status	Project	Scale	Status	Rev
F Feasibility S Sketch Design D Design P Planning B Building Control	No	GYAS.01	P	A
W Working Drawing M Measurement T Tender C Construction R Record	200			

Figure 01: Reproduction of Donald Insall Associates Drawing Reference GYAS.01. Not to scale.



Ground Floor Plan @ 1:50



First Floor Plan @ 1:50

NOTES  
 This schedule has been prepared for outlining repairs and alterations proposed for consents, and for approximate outline costing (not tender) purposes.

- Internal (General)**
- Ceilings**  
 1. GROUND FLOOR: Ceilings and finishes. Ceilings and internal infill panels are to be repaired with lath and lime plaster, wattle and daub, to match original. All lime plaster finishes are to be feathered to the edge of any timber frame members.  
 2. FIRST FLOOR: Ceilings and Wiche's marks to be retained within F03 are to be repaired with lath and lime plaster, wattle and daub, to match original. All lime plaster finishes are to be feathered to the edge of any timber frame members. To remainder of first floor space the spaces are open to the underside of the roof. The original lime torching is missing in most places and this should be reinstated once works to the roof have been completed.
  - Timber Frame**  
 3. Timber frame members. Exposed internal timber frame members are not to be cleaned with an abrasive, rather with a soft brush and water alone to keep all existing paint finishes and to avoid scoring the timber. Internal infill panels are to be redecorated with a breathable natural emulsion.  
 4. Structure. Structural beams and joist repairs are to be to Structural Engineer's specification and recommendations and based on like with like replacements, or supported by other means where additional strengthening is considered necessary.
  - Walls**  
 5. GROUND FLOOR: Stone walls and finishes. All internal rubble stonework will be repointed in lime where required. Stitching and grouting to Structural Engineer's specification. Lime wash to west and east internal elevations. North and South to be left as unfinished stonework.  
 6. FIRST FLOOR: Stone walls and finishes. All internal rubble stonework will be repointed in lime where required, and will be re-plastered with a soft hydraulic lime and lime wash finish, to include wall returns. Stitching and grouting to Structural Engineer's specification. Historic plasterers to be patch repaired and made good with lime and refreshed to match. Great care to be taken so as not to remove historic graffiti.  
 7. Fittings. Redundant modern C20 fixtures and fittings to be removed. All C20 electrical conduits, boards / meters closed off and removed. Holes will be made good unless they can be reutilised within new installation. Electrical wiring will be surface fixed where no alterations to existing substrate and finishes are possible, and in discreet positions elsewhere and as possible. Domestic electrical installations, wiring and fittings will be chased in trunking within thickness of any new lime plaster finishes. No chases or recesses will be made in timber frame members are to existing stonework or plasterwork in connection with the electrical installation. All period ironmongery will be retained and reconditioned.  
 8. Joinery. All timber joinery repairs to historic structural frame and historic fittings (to include doors, doorframes, architraves, and any decorative profiles) will be in timber to match existing and to match existing period profiles. Conduct repairs and refresh existing internal door frames and doors as required, and on basis of like for like to period profiles, in materials to match. New doors will match existing where immediately adjacent and appropriate.
  - Floors**  
 9. GROUND FLOOR: Stone floors. All ground floor slate slabs are to be retained. Current extent unknown - assumption is entire floor flagged. Generally, these will need to be lifted and re-bedded level. Where proposed to be lifted, these will be done in accordance with an Archaeologist's watching brief, marking with tags and fully recording location for relaying after works to isolate slab. No existing foundations are to be undermined during any excavations. Flags will be re-laid on lime mortar screed if loose or require re-bedding, and fully pointed in lime mortar.  
 10. FIRST FLOOR: Timber floors. Replace timber boards where rotten in materials and board dimensions to match existing.  
 11. Drainage. Drainage is to exit through ground floor and under building via route to the west to new treatment plant. The route to be minimally destructive to building fabric and minimises loss of historic character. Soil stacks will be concealed internally and will not project through walls.  
 12. Insulation. Where possible to install, insulation will be inserted to all roof pitches with adequate ventilation gap at ridge height and eaves level. Details will allow ancient timbers to be exposed whilst aiming for best insulation levels possible to achieve without alterations to historic fabric.  
 13. Wattle and daub partitions. All partitions are to be retained and repaired incorporating traditional like with like repairs in situ. If necessary, substantial leans will be permanently propped / strengthened by designed structural and independent integration in accordance with Structural Engineer's recommendations on existing loadings where necessary. Conservation intention is to retain all wattle and daub partitions incorporating all leans and to strengthen and support as necessary.
- NOTE:**  
 Drawing to be printed in Colour.  
 0 0.5 1 2.5  
 Scale 1:50 m

**Notes:**  
 1 Any dwg format drawing is to be read only in conjunction with and at the scale of the accompanying pdf.  
 2 Status 'C' drawing (Construction)  
 All dimensions are to be checked on site by the contractor, scaling is for Planning purposes only.  
 Unless otherwise indicated, all dimensions are in millimeters.  
 All information on this drawing is to be read in conjunction with the relevant Donald Insall Associates specification and trade contractors' drawings and information by neoclients.  
 3 In the event of any query, please contact us immediately.  
 4 This drawing contains survey information by others and is to be used solely for the purposes for which it was issued.  
 © 2015 DONALD INSALL ASSOCIATES LTD

Rev	Date	Dwn	Auth	Revision
A	13.11.2015	GRR	MTO	Issued for Planning
B	06.11.2015	GRR	MTO	Issued for Client sign-off

**Drawing Status**  
 F Feasibility  
 S Sketch Design  
 D Design  
 P Planning  
 B Building Control  
 W Working Drawing  
 M Measurement  
 T Tender  
 C Construction  
 R Record

Glan yr Afon Stables and Cart Shed  
 Conservation and Conversion Project

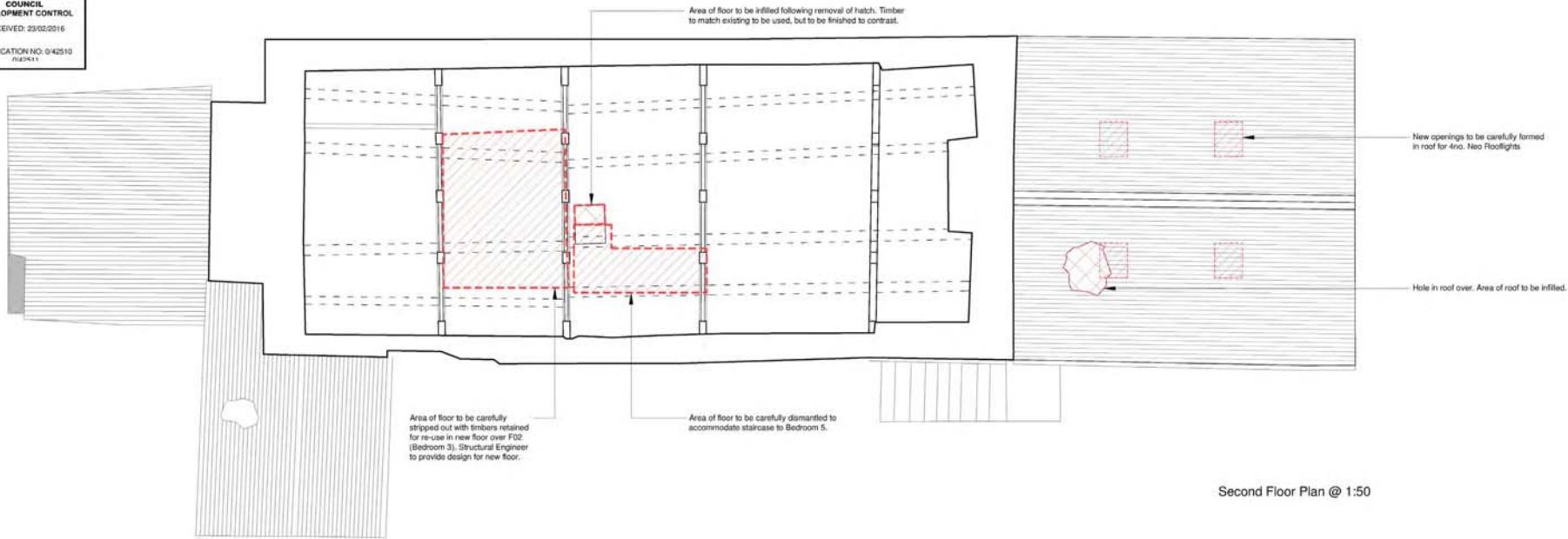
Ground and First Floor Plans  
 As Existing  
 Internal Repairs and Demolitions

**Donald Insall Associates**  
 Chartered Architects and Historic Building Consultants

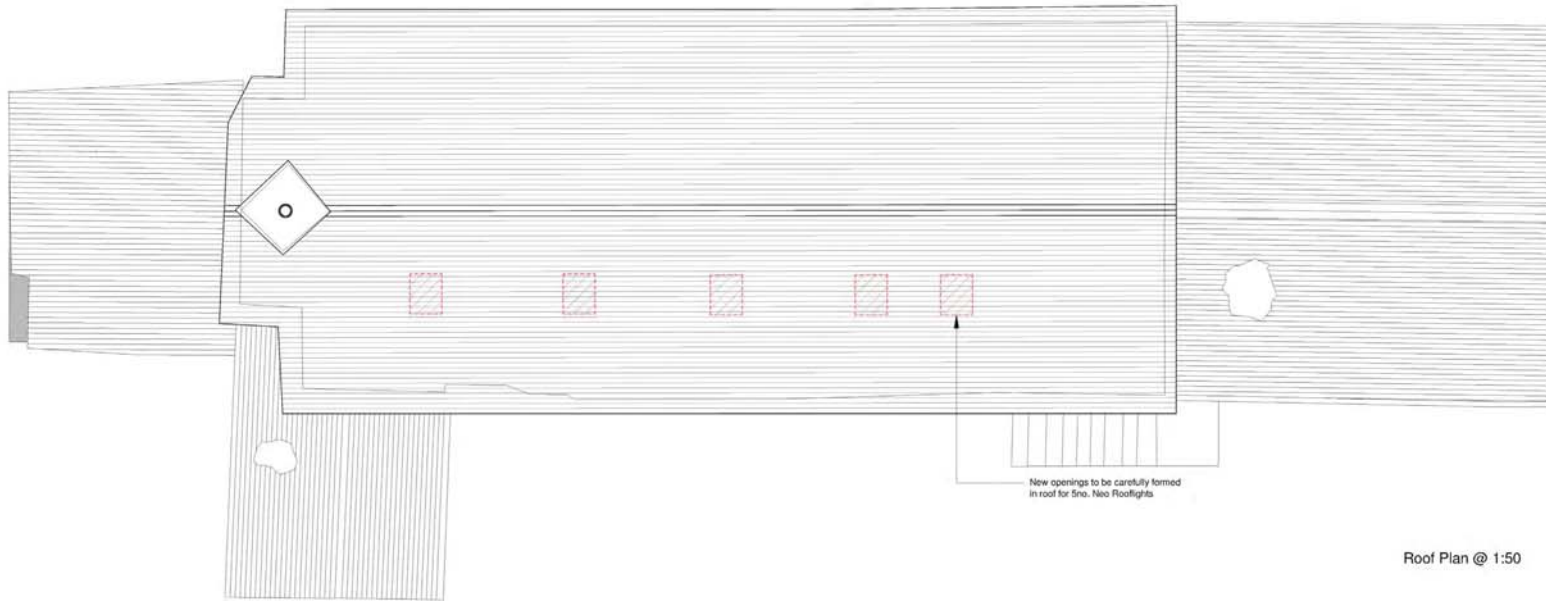
Y Bwca, Pool Lane, Conwy LL32 8PZ  
 T: (+44)01492 592 378 www.insall-architects.co.uk

Project	GYAS.01	No	101
Scale	(A1) 1:50	Status	P
		Rev	A

Figure 02: Reproduction of Donald Insall Associates Drawing Reference GYAS.01 101. Not to scale.



Second Floor Plan @ 1:50



Roof Plan @ 1:50

NOTE:  
 Drawing to be printed in Colour.  
 0 0.5 1 2.5  
 Scale 1:50  
 m



Notes:  
 1 Any dwg format drawing is to be read only in conjunction with and at the scale of the accompanying pdf.  
 2 Status 'C' drawing (Construction).  
 All dimensions are to be checked on site by the contractor, scaling is for Planning purposes only.  
 Unless otherwise indicated, all dimensions are in millimeters.  
 All information on this drawing is to be read in conjunction with the relevant Donald Insall Associates specification and trade contractors' drawings and information by specialists.  
 3 In the event of any query, please contact us immediately.  
 4 This drawing contains survey information by others and is to be used solely for the purposes for which it was issued.  
 © 2015 DONALD INSALL ASSOCIATES LTD

Rev	Date	Dwn	Auth	Revision
A	13.11.2015	GRR	MTQ	Issued to Planning
-	06.11.2015	GRR	MTQ	Issued for Client sign-off

Drawing Status
F Feasibility
S Sketch Design
D Design
P Planning
B Building Control
W Working Drawing
M Measurement
T Tender
C Construction
R Record

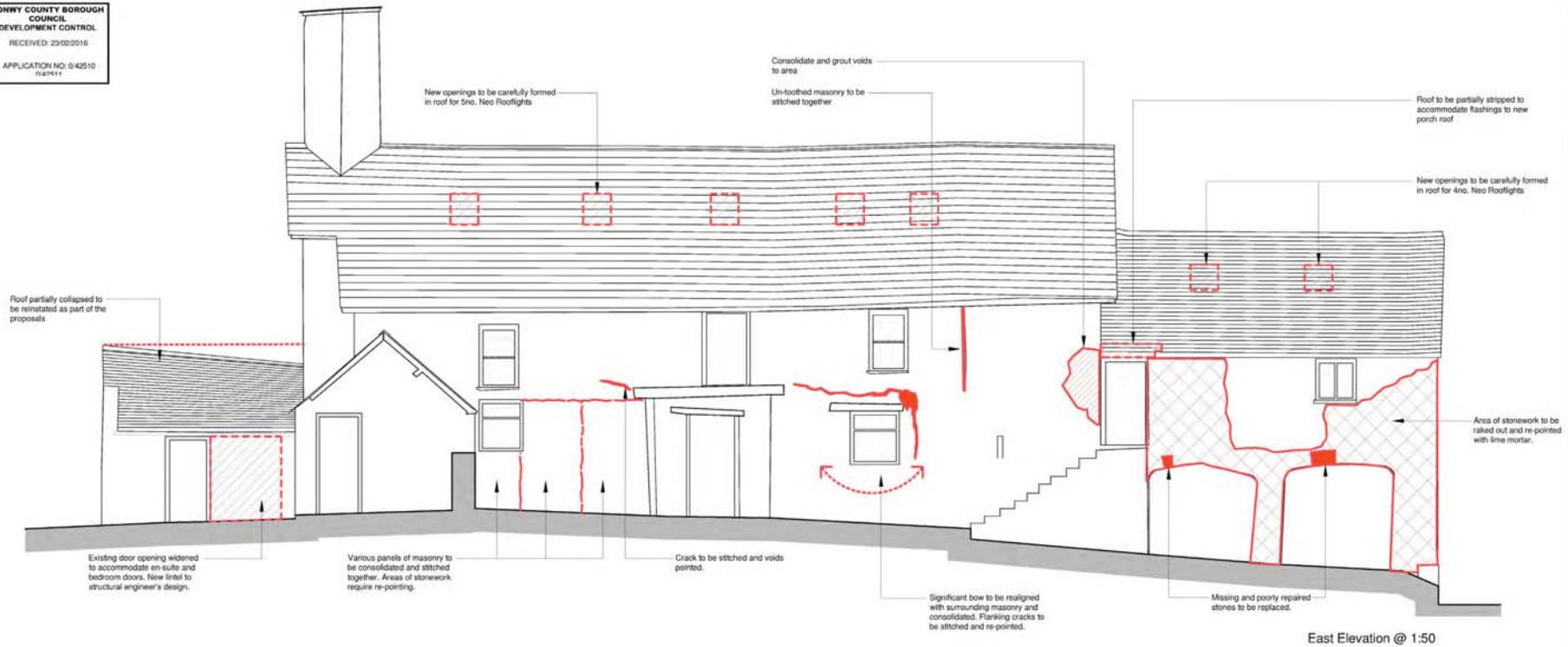
Glan yr Afon Stables and Cart Shed  
 Conservation and Conversion Project

Ground and First Floor Plans  
 As Existing  
 Internal Repairs and Demolitions

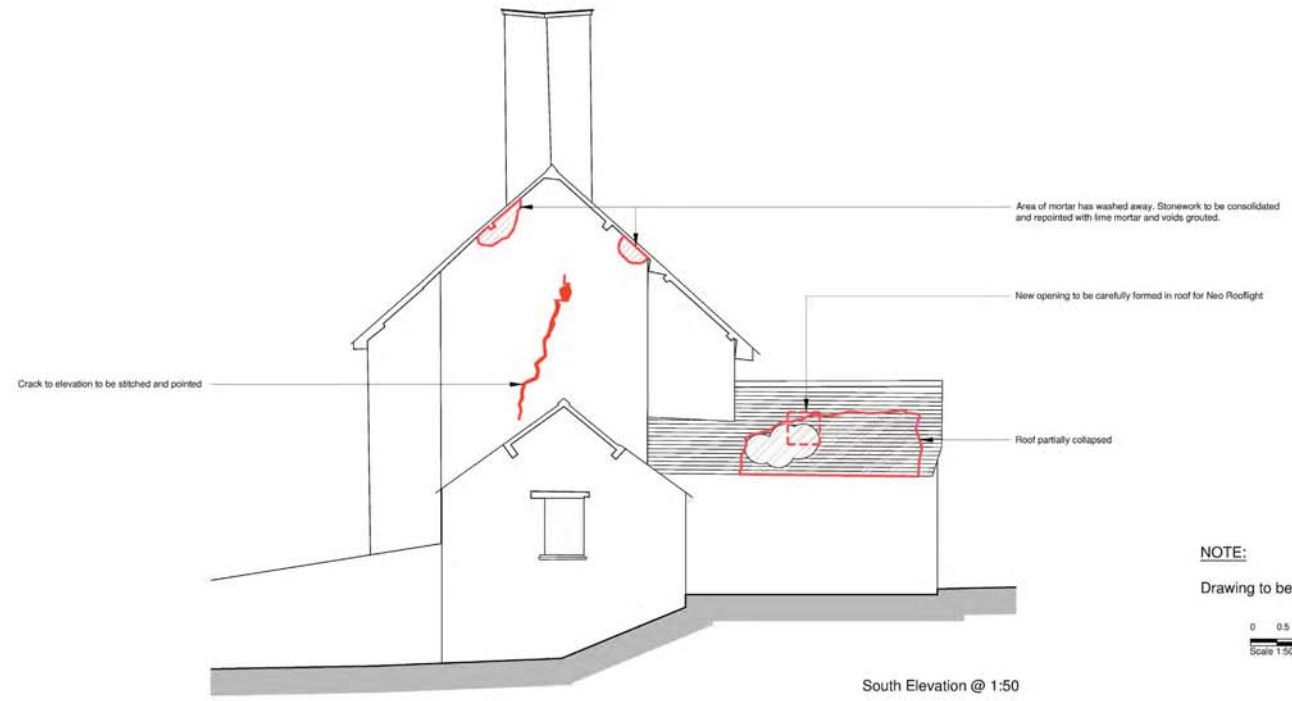
<b>Donald Insall Associates</b> Chartered Architects and Historic Building Consultants	
Y Becws, Pool Lane, Conwy LL32 8PZ T: (+44)01492 592 378 www.insall-architects.co.uk	
Project	GYAS.01
No	102
Scale	Status Rev
(A1) 1:50	P A

Figure 03: Reproduction of Donald Insall Associates Drawing Reference GYAS.01 102. Not to scale.

CONWY COUNTY BOROUGH  
COUNCIL  
DEVELOPMENT CONTROL  
RECEIVED: 23/02/2016  
APPLICATION NO: 0/42510  
16/2/16



East Elevation @ 1:50



South Elevation @ 1:50

Notes:  
1 Any dwg format drawing is to be read only in conjunction with and at the scale of the accompanying pdf.  
2 Status 'C' Drawing (Construction):  
All dimensions are to be checked on site by the contractor, scaling is for Planning purposes only.  
Unless otherwise indicated, all dimensions are in millimeters.  
All information on this drawing is to be read in conjunction with the relevant Donald Insall Associates specification and trade contractors' drawings and information by specialists.  
3 In the event of any query, please contact us immediately.  
4 This drawing contains survey information by others and is to be used solely for the purposes for which it was issued.  
© 2015 DONALD INSALL ASSOCIATES LTD

Rev	Date	Dwn	Auth	Revision
A	15.11.2015	GRH	MTD	Issued to Planning
-	06.11.2015	GRH	MTD	Issued for Client sign-off

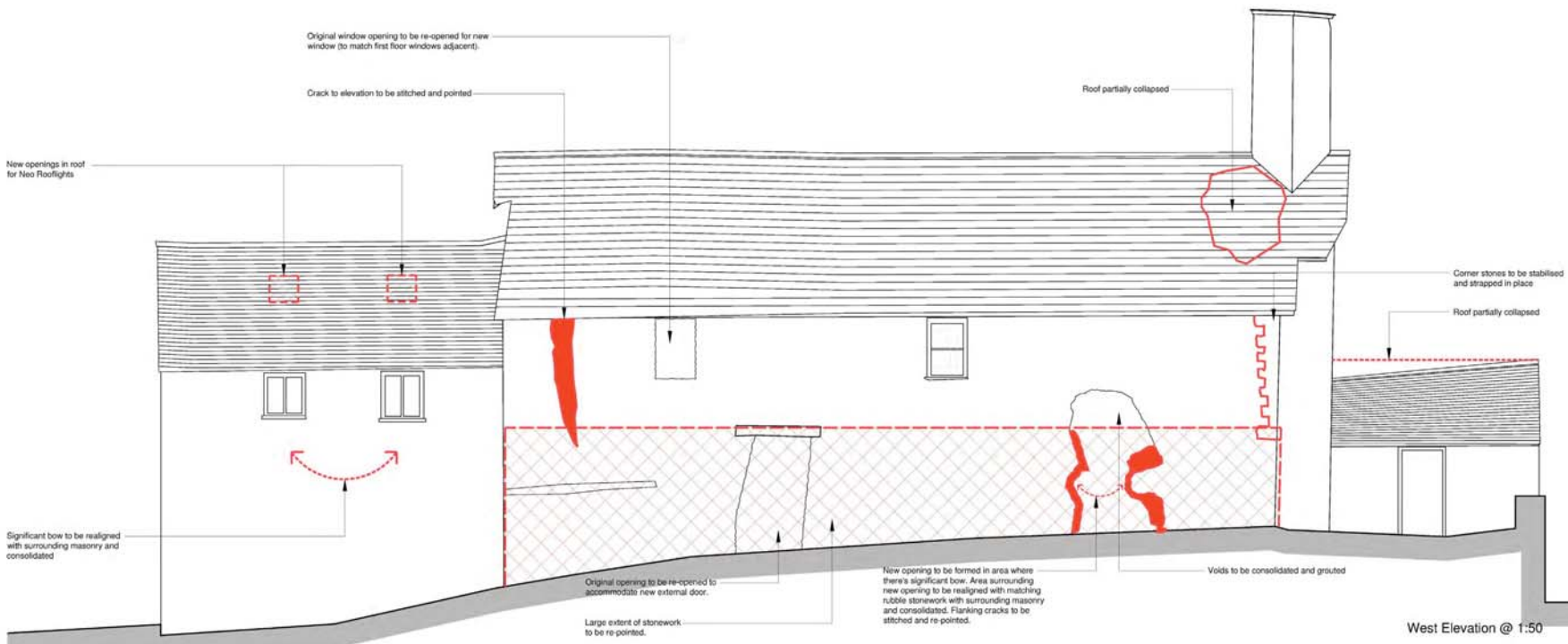
**Donald Insall Associates**  
Chartered Architects and Historic Building Consultants

Y Bwys, Pool Lane, Conwy LL32 8PZ  
T: (+44)01492 592 378 [www.insall-architects.co.uk](http://www.insall-architects.co.uk)

Glan yr Afon Stables and Cart Shed  
Conservation and Conversion Project  
  
East & South Elevations As Existing  
B-B Section  
Repairs and Demolitions

Drawing Status		Project	
F	Feasibility	No	
S	Sketch Design		
D	Design		
P	Planning		
B	Building Control		
W	Working Drawing		
M	Measurement		
T	Tender		
C	Construction		
R	Record		
Project		GYAS.01	103
Scale		Status	Rev
(A1)	1: 5 0	P	A

Figure 04: Reproduction of Donald Insall Associates Drawing Reference GYAS.01 103. Not to scale.



**Notes:**  
 1 Any dwg format drawing is to be read only in conjunction with and at the scale of the accompanying pdf.  
 2 Status 'C' drawing (Construction).  
 All dimensions are to be checked on site by the contractor, scaling is for Planning purposes only.  
 Unless otherwise indicated, all dimensions are in millimeters.  
 All information on this drawing is to be read in conjunction with the relevant Donald Insall Associates specification and trade contractors' drawings and information by specialists.  
 3 In the event of any query, please contact us immediately.  
 4 This drawing contains survey information by others and is to be used solely for the purposes for which it was issued.  
 © 2015 DONALD INSALL ASSOCIATES LTD

**CONWY COUNTY BOROUGH COUNCIL**  
**DEVELOPMENT CONTROL**  
 RECEIVED: 23/02/2016  
 APPLICATION NO: 042510  
 (16/2/11)

Rev	Date	Dwn	Auth	Revision
A	13.11.2015	GRR	MTO	Issued to Planning
-	06.11.2015	GRR	MTO	Issued for Client sign off

**Donald Insall Associates**  
 Chartered Architects and Historic Building Consultants

Y Beows, Pool Lane, Conwy LL32 8PZ  
 T: (+44)01492 592 378 [www.insall-architects.co.uk](http://www.insall-architects.co.uk)

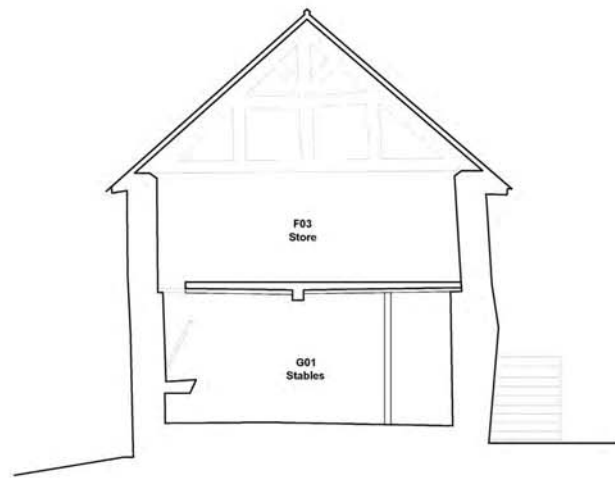
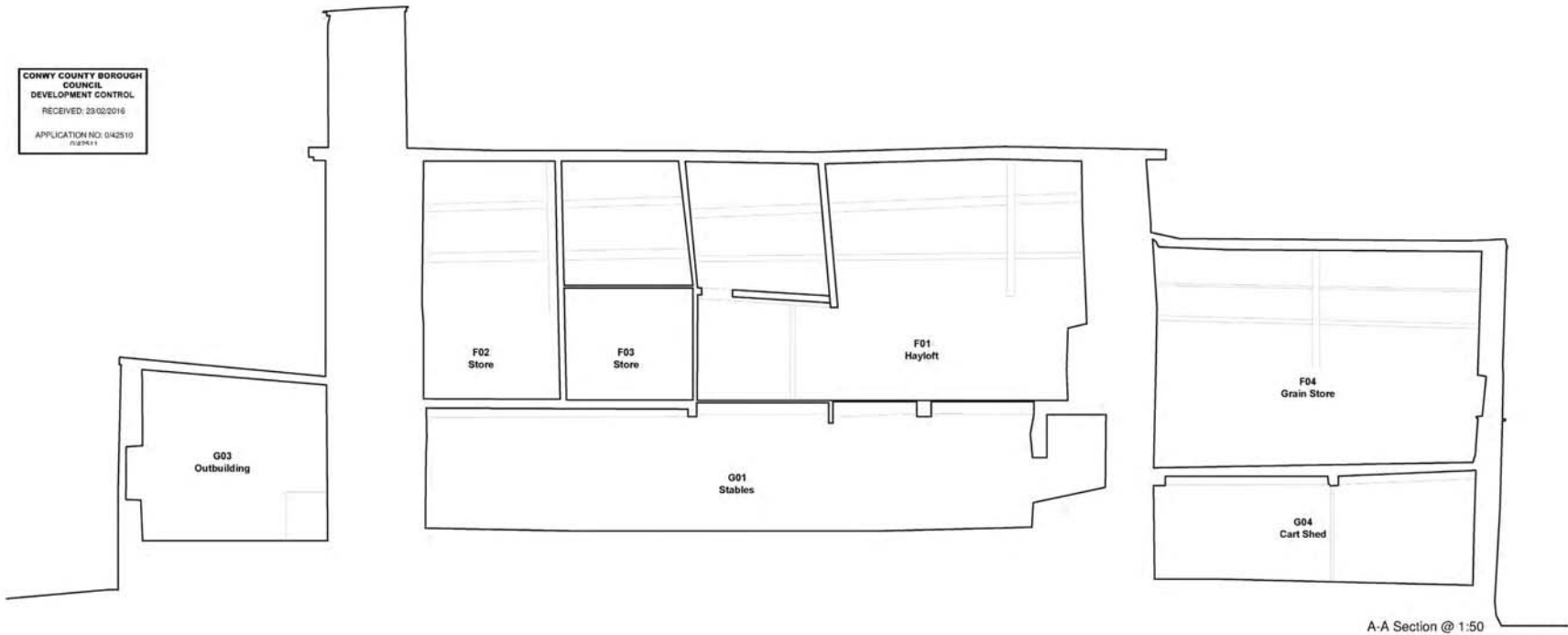
Glan yr Afon Stables and Cart Shed  
 Conservation and Conversion Project  
 West & North Elevations As Existing  
 B-B Section  
 Repairs and Demolitions

Drawing Status		Project	
F	Feasibility	No	
S	Sketch Design		
D	Design		
P	Planning		
B	Building Control		
W	Working Drawing		
M	Measurement		
T	Tender		
C	Construction		
R	Record		
Project		GYAS.01	104
Scale		Status	Rev
(A1)	1: 5 0	P	A

**NOTE:**  
 Drawing to be printed in Colour.  
 0 0.5 1 2.5  
 Scale 1:50 m

Figure 05: Reproduction of Donald Insall Associates Drawing Reference GYAS.01 104 . Not to scale.

CONWY COUNTY BOROUGH  
COUNCIL  
DEVELOPMENT CONTROL  
RECEIVED: 23/02/2016  
APPLICATION NO: 042510  
03/2011



NOTE:  
Drawing to be printed in Colour.  
0 0.5 1 2.5  
Scale 1:50 m

Notes:  
1 Any dwg format drawing is to be read only in conjunction with and at the scale of the accompanying pdf.  
2 Status 'C' drawing (Construction)  
All dimensions are to be checked on site by the contractor, scaling is for Planning purposes only.  
Unless otherwise indicated, all dimensions are in millimeters.  
All information on this drawing is to be read in conjunction with the relevant Donald Insall Associates specification and trade contractors' drawings and information by specialists.  
3 In the event of any query, please contact us immediately.  
4 This drawing contains survey information by others and is to be used solely for the purposes for which it was issued.  
© 2015 DONALD INSALL ASSOCIATES LTD

Rev	Date	Dwn	Auth	Revision
A	13.11.2015	GRR	MTO	Issued to Planning
	08.11.2015	GRR	MTO	Issued for Client sign-off

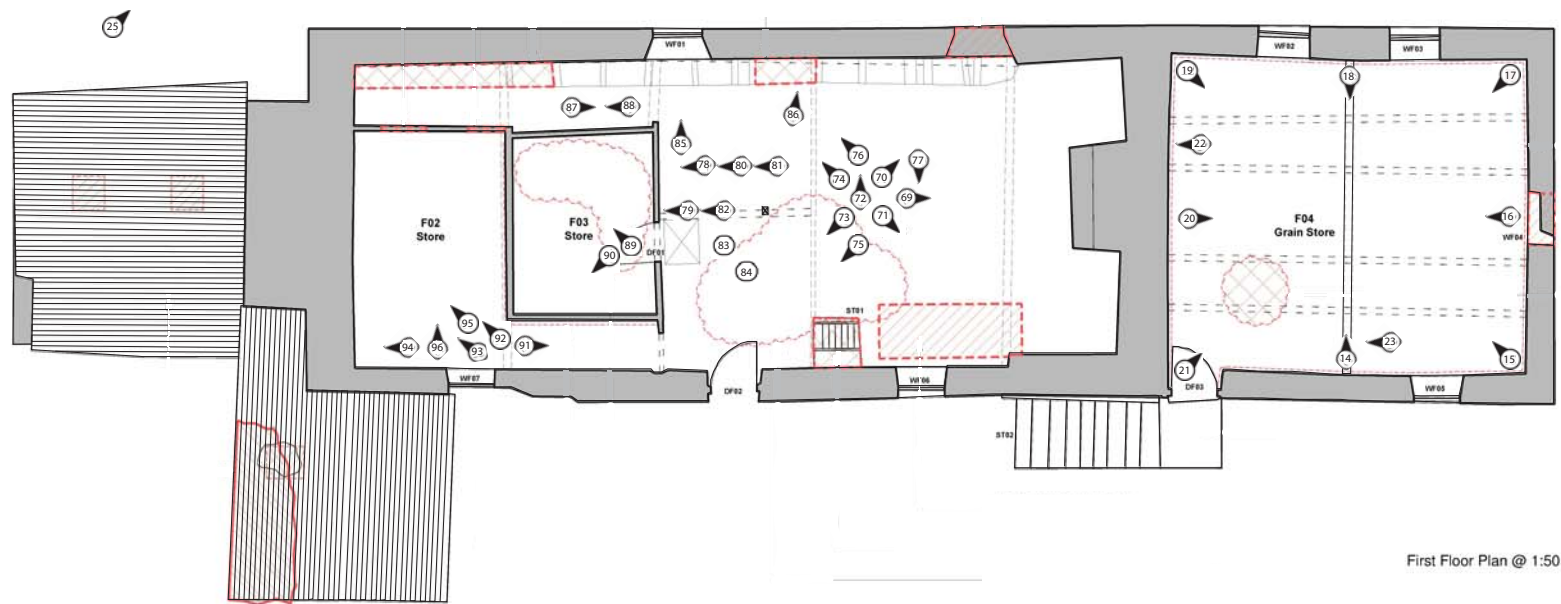
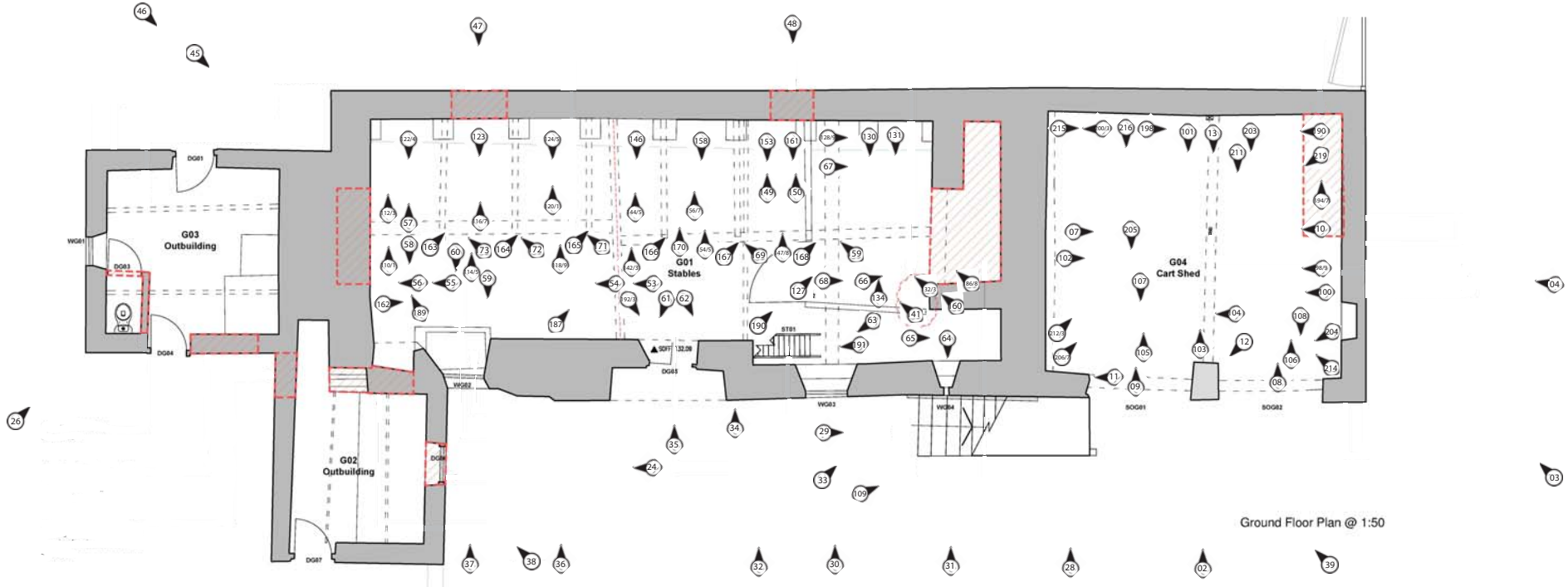
**Donald Insall Associates**  
Chartered Architects and Historic Building Consultants

Y Beccws, Pool Lane, Conwy LL32 8PZ  
T: (+44)01492 532 378 [www.insall-architects.co.uk](http://www.insall-architects.co.uk)

Glan yr Afon Stables and Cart Shed  
Conservation and Conversion Project  
  
A-A & B-B Sections  
As Existing  
Repairs and Demolitions

Drawing Status	
F Feasibility	W Working Drawing
S Sketch Design	M Measurement
D Design	T Tender
P Planning	C Construction
B Building Control	R Record
Project	No
GYAS.01	105
Scale	Status Rev
(A1) 1: 5 0	P A

Figure 06: Reproduction of Donald Insall Associates Drawing Reference GYAS.01 105. Not to scale.



NOTE:  
Drawing to be printed in Colour.  
0 0.5 1 2.5  
Scale 1:50 m



Glan yr Afon Stables and Cart Shed Conservation and Conversion Project		<b>Donald Insall Associates</b> Chartered Architects and Historic Building Consultants Y Beca, Pool Lane, Corwy LL32 8PZ T: (+44)01492 592 378 www.insall-architects.co.uk	
Ground and First Floor Plans As Existing Internal Repairs and Demolitions		Project GYAS.01	No 101
Scale	Status	Rev	
(A1) 1: 5 0	P	A	

Figure 07: Reproduction of Donald Insall Associates Drawing Reference GYAS.01101 with amendments to illustrate location and direction of Gwynedd Archaeological Trust photographic record. Not to scale.





Plate 1: NE elevation Cart Shed G04 (external) (archive reference: G2479\_004).



Plate 2: NE elevation of Outbuilding G02 (archive reference: G2479\_024).



Plate 3: SW/SE elevation of Outbuilding G03 (archive reference: G2479\_026).



Plate 4: Chimney breast of G01/F01 showing scar of Outbuilding G02 and vertical crack in breast; (archive reference: G2479\_046).



Plate 5: General shot of Cart Shed G04 in relation to Glan yr Afon House G01/G02/G03/F01/F02/F03 (Buildings C and B in Morriss Report) (archive reference: G2479\_001).



Plate 6: NE end of G01/F01 showing structural failings around ground floor window (archive reference: G2479\_031).



Plate 7: Central portion of G01/F01 showing entrance doorway; (archive reference: G2479\_032).



Plate 8: NE end of G01/F01 showing vertical crack and slit window (archive reference: G2479\_030).



Plate 9: Relationship of external stairs, string course and structural failure (G01)  
(archive reference: G2479\_033).



Plate 10: Limestone quoins visible in both inner and outer faces (G01) (archive reference: G2479\_034).



Plate 11: Collapsing repair between central door of G01 and Outbuilding G02 (archive reference: G2479\_036).



Plate 12: E elevation of Cart Shed G04 (external) (archive reference: G2479\_003).



Plate 13: External staircase to Grain Store F04 (archive reference: G2479\_029).



Plate 14: NE elevation Cart Shed G04 (external) (archive reference: G2479\_005).



Plate 15: NW wall of G01/F01 showing complex phasing (archive reference: G2479\_041).



Plate 16: Blocked doorway in NW elevation of G01/F01 with butt joint either side; scale: 1x2m (archive reference: G2479\_048).





Plate 17: NW wall of G01/F01 showing complex phasing (archive reference: G2479\_040).



Plate 18: View of Glan yr Afon from NW (archive reference: G2479\_097).



Plate 19: Fireplace Lintel; scale: (archive reference: G2479\_189).



Plate 20: Loose box in G01 Stables (archive reference: G2479\_127).



Plate 21: Stall 05 in G01 Stables (archive reference: G2479\_155).



Plate 22: Rendered feed storage area built into window opening in G01 (archive reference: G2479\_059).



**Plate 23: Three horse collars hanging above chimney breast opening in G01; scale: 1x1m (archive reference: G2479\_056).**



**Plate 24: Stairs up to Hayloft F01 from Stables G01 (archive reference: G2479\_191).**



Plate 25: Roof; scale: (archive reference: G2479\_176).



Plate 26: Roof; scale: (archive reference: G2479\_180).



Plate 27: Roof; scale: (archive reference: G2479\_177).



Plate 28: Chimney breast in end of building showing timber lintel above, reduction in width and built in oven on left of photo (G01); scale: 1x1m (archive reference: G2479\_066).



Plate 29: Cobbled floor remains in Loose box in G01 Stables; scale: 1x1m (archive reference: G2479\_141).



Plate 30: SW/SE elevation of Outbuilding G02 (archive reference: G2479\_025).



Plate 31: Internal elevation of East wall of G01 Stables from Stall 01 (archive reference: G2479\_122).



Plate 32: North elevation of Outbuilding G03 (archive reference: G2479\_027).





Plate 33: SE elevation of Cart Shed G04 (external) (archive reference: G2479\_002).



Plate 34: SE elevation of Cart Shed G04 (internal) (archive reference: G2479\_013).



Plate 35: SW elevation of Cart Shed G04 (internal) (archive reference: G2479\_010).



Plate 36: NW elevation of Cart Shed G04 (internal) (archive reference: G2479\_008).



Plate 37: NE elevation Cart Shed G04 (internal) (archive reference: G2479\_007).



Plate 38: Butt joint between Cart Shed G04 and external access stairs, bricks visible at base of wall (archive reference: G2479\_011).



**Plate 39: Cobbled surface partly revealed under sawdust covering floor of Cart Shed G04 (archive reference: G2479\_012).**



**Plate 40: Central portion of SE internal elevation. Access point in floor F01 Hayloft (archive reference: G2479\_077).**



Plate 41: Partition with plater work, N corner F01 Hayloft (archive reference: G2479\_075).



Plate 42: Partition with plasterwork, S corner F01 Hayloft (archive reference: G2479\_076).



Plate 43: Chimney breast in F01 Hayloft (archive reference: G2479\_069).



Plate 44: Decorative plasterwork - upper and lower panels - F01 Hayloft / F03 Store; scale: 1x1m (archive reference: G2479\_081).



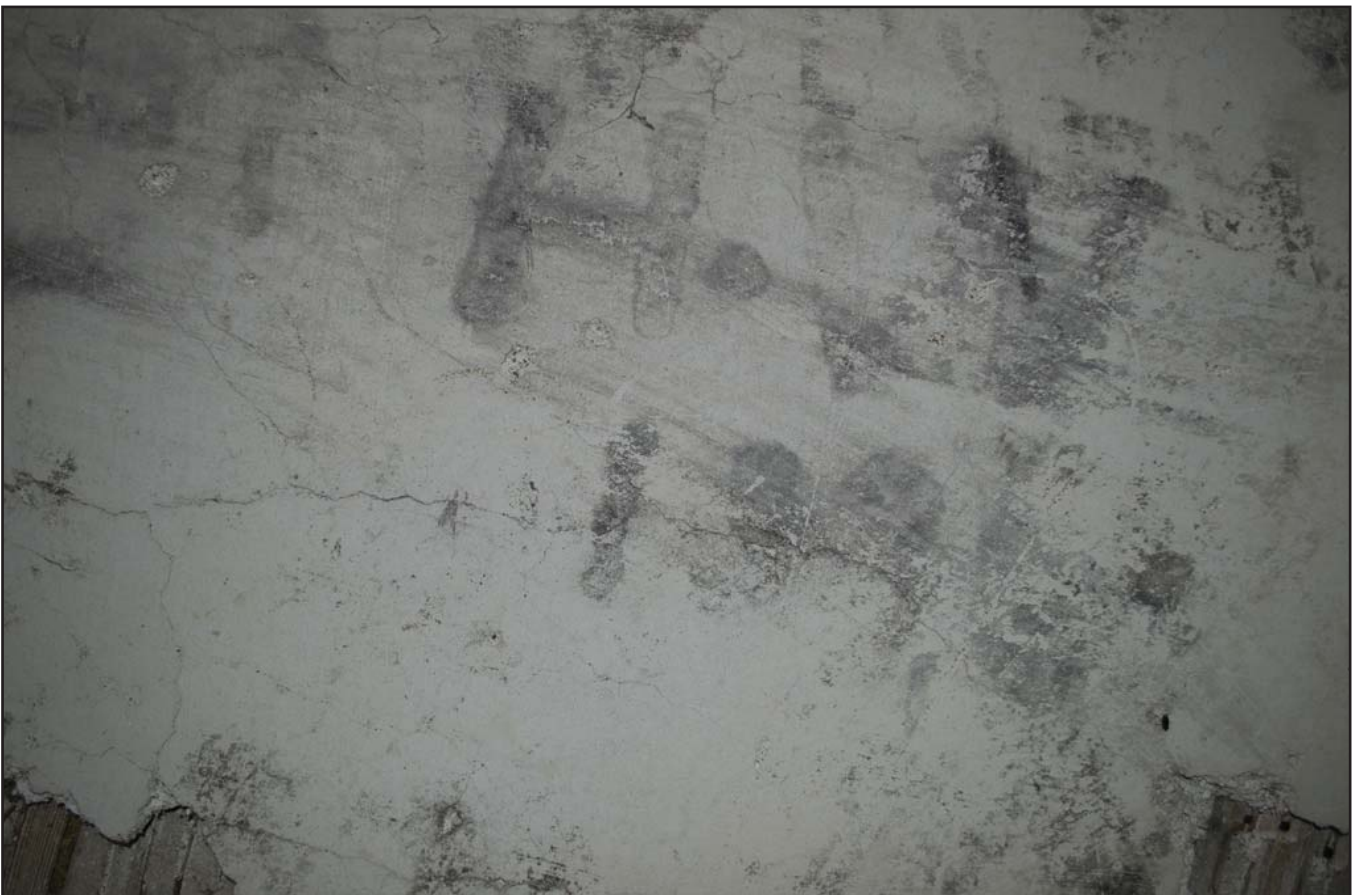
Plate 45: Decorated plaster to partition below mezzanine F01 Hayloft (archive reference: G2479\_086).



Plate 46: Decorative plaster - upper portion - detail - F01 Hayloft / F03 Store (archive reference: G2479\_082).



**Plate 47: Representative graffiti from roof of mezzanine, engraved / F01 Hayloft  
(archive reference: G2479\_083).**



**Plate 48: Representative graffiti from roof of mezzanine, painted / F01 Hayloft  
(archive reference: G2479\_084).**





Plate 49: Low quality lathe and plaster wall forming corridor down NW side of building F02 Store (archive reference: G2479\_092).



Plate 50: Corridor formed on SE side of F03 Store showing timber in place (archive reference: G2479\_091).



**Plate 51: Blocked fireplace with internal still in place, low quality plaster. F02 Store**  
(archive reference: G2479\_093).



**Plate 52: Low quality lathe and plaster forming internal room upstairs. F03 Store**  
(archive reference: G2479\_089).



Plate 53: Graffiti on low quality lathe and plaster forming internal room upstairs. F03 Store (archive reference: G2479\_090).



Plate 54: External staircase to Grain Store F04 (archive reference: G2479\_028).



Plate 55: SW elevation of Grain Store F04 - upper floor - (internal) (archive reference: G2479\_016).

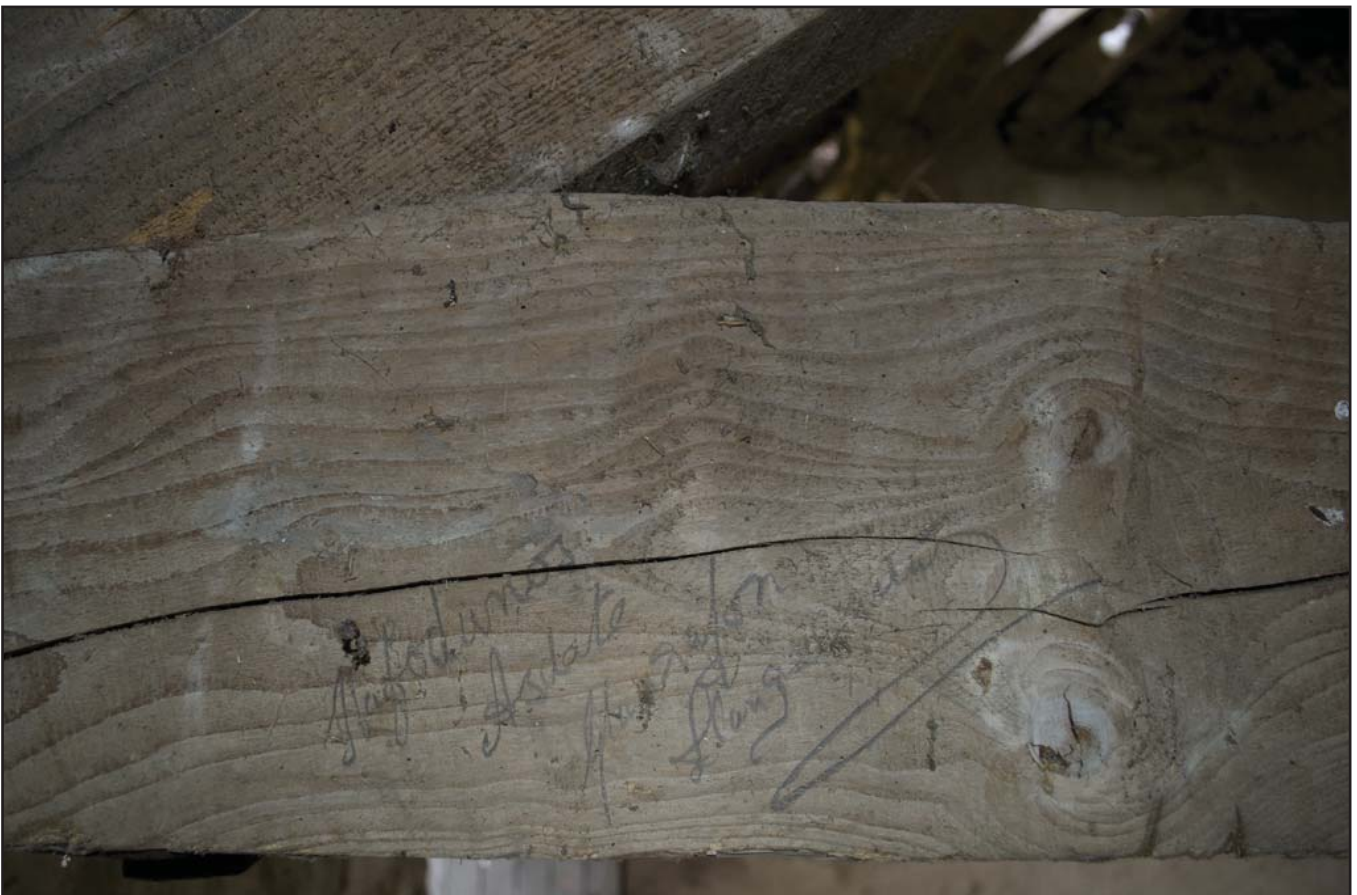


Plate 56: Example of graffiti from SW elevation of roof truss of Grain Store F04 - upper floor - (internal) (archive reference: G2479\_023).



Plate 57: SE elevation of Grain Store F04 - upper floor - (internal) (archive reference: G2479\_018).



Plate 58: NW elevation of Grain Store F04 - upper floor- (internal) (archive reference: G2479\_014).



Plate 59: NW/SW elevation of Grain Store F04 - upper floor (internal) (archive reference: G2479\_015).



Plate 60: SW/SE elevation of Grain Store F04 - upper floor- (internal) (archive reference: G2479\_017).



Plate 61: NE elevation of Grain Store F04 - upper floor - (internal) (archive reference: G2479\_020).



Plate 62: NE/NW elevation of Grain Store F04 - upper floor - (internal) (archive reference: G2479\_021).



Plate 63: N wall and cobbled floor in Cart Shed G04; scale: 1x1 m (archive reference: G2479\_100).



Plate 64: E opening and cobbled floor in Cart Shed G04; scale: 1x1 m (archive reference: G2479\_101).





Plate 65: S wall and cobbled floor in Cart Shed G04; scale: 1x1m (archive reference: G2479\_102).



Plate 66: Lifting of Cobbles in NW corner of G04 Cart Shed; scale: 1x1m (archive reference: G2479\_196).



Plate 67: Cobbles lifted on N side of G04 Cart Shed showing depth of bedding gravel (archive reference: G2479\_198).



Plate 68: Cobbles lifted on S side of G04 Cart Shed showing depth of bedding gravel; scale: 1x1m (archive reference: G2479\_201).



Plate 69: Cobbles lifted on N side of G04 Cart Shed showing base of wall of G04 Cart Shed; scale: 1x1m (archive reference: G2479\_209).



Plate 70: Cobbles lifted in G04 Cart Shed showing base of pillar of G04 Cart Shed; scale: 1x1m (archive reference: G2479\_218).



**Plate 71: Cobbles lifted on S side of G04 Cart Shed showing base of wall of G04 Cart Shed (archive reference: G2479\_217).**

## **APPENDIX I**

**Reproduction of Gwynedd Archaeological Trust written scheme of investigation (September 2016)**

GLANYRAFON, LLANGERNYW

PROJECT SPECIFICATION FOR ARCHAEOLOGICAL  
MITIGATION:




LEVEL 3 BUILDING RECORD & WATCHING BRIEF  
(G2479)

***Prepared for***

*Mr Rhys Jones*

***September 2016***

Ymddiriedolaeth Archaeolegol Gwynedd  
Gwynedd Archaeological Trust

Approvals Table				
	Role	Printed Name	Signature	Date
Originated by	Document Author	SPENCER GAVIN SMITH		14/09/16
Reviewed by	Document Reviewer	JOHN ROBERTS		14/09/16
Approved by	Principal Archaeologist	JOHN ROBERTS		14/09/16

Revision History			
Rev No.	Summary of Changes	Ref Section	Purpose of Issue
01	Revised methodology further to feedback from the CPAT Development Control Archaeologist	3.2	Final

## GLANYRAFON, LLANGERNYW

### PROJECT SPECIFICATION FOR ARCHAEOLOGICAL MITIGATION: LEVEL 3 BUILDING RECORD & WATCHING BRIEF (G2479)

Prepared for Mr Rhys Jones, September 2016

## CONTENTS

1	INTRODUCTION .....	4
2	ARCHAEOLOGICAL AND HISTORICAL BACKGROUND .....	5
3	METHODOLOGY: LEVEL 3 BUILDING RECORD .....	6
3.1	Photographic Record .....	7
3.2	Descriptive Record.....	7
3.3	Analysis and Account of the Building's Origin, Development and Use.....	8
4	METHODOLOGY: watching brief .....	9
4.1	Watching Brief.....	9
4.2	Basic watching brief methodological procedures.....	10
4.2.1	Watching Brief.....	10
4.3	Environmental Samples .....	12
4.4	Human Remains .....	13
4.5	Small Finds .....	14
4.6	Further Archaeological Works.....	15
4.7	Monitoring Arrangements.....	16
4.8	Fieldwork Archiving .....	17
4.9	Data processing and report compilation .....	18
5	PERSONNEL.....	20
6	HEALTH AND SAFETY .....	21
7	INSURANCE.....	22
8	SOURCES CONSULTED.....	23
	FIGURE 01.....	25
	Location Map .....	25
	APPENDIX I .....	26
	Reproduction of Gwynedd Archaeological Trust photographic record pro-forma.....	26
	APPENDIX II .....	27
	Reproduction of Gwynedd Archaeological Trust watching brief record pro-forma .....	27



# 1 INTRODUCTION

Gwynedd Archaeological Trust (GAT) has been asked by *Mr. Rhys Jones* to prepare a project specification for archaeological mitigation comprising a building record and watching brief of Glanyrafon, Llangernyw, Conwy County Borough (Figure 01; NGR SH8795169319). The property is a Grade II Listed Building (NMRW NPRN 27210; CPAT PRN 112434) and was originally constructed as a house in the 17<sup>th</sup> century, and later converted into stables and a cart shed. The archaeological mitigation is scheduled to begin in September 2016.

The archaeological mitigation has been commissioned in response to conditions 6 & 7 within the grant of Listed Building Consent of Planning Application 0/42511 submitted to Conwy County Council and to enable these conditions to be discharged. The Clwyd Powys Archaeological Trust (CPAT) Development Control Archaeologist has requested a LEVEL 3 building record as described in *Understanding Historic Buildings: A guide to good recording practice* (Historic England 2016). The scheme will be monitored throughout by the CPAT Development Control Archaeologist. The content of this design and all subsequent reporting must be approved in advance by CPAT.

The archaeological works will also conform to the following guidance:

- *Management of Archaeological Projects* English Heritage, 1991;
- *Management of Research Projects in the Historic Environment: The MoRPHE Project Managers' Guide*. Historic England, 2015;
- *Planning Policy Wales* (Edn.8, Jan 2016)
- *RCAHMW Guidelines for Digital Archives Version 1*.
- *Standard and Guidance for Archaeological Investigation and Recording of Standing Buildings and Structures* (Chartered Institute for Archaeologists, 2014); and
- WO Circular 60/96 Planning and the Historic Environment: Archaeology and the Historic Environment: Archaeology.

Gwynedd Archaeological Trust is a Chartered Institute for Archaeologists *Registered Archaeological Organisation*.

## **2 ARCHAEOLOGICAL AND HISTORICAL BACKGROUND**

The farmstead of Glanyrafon is situated on the east bank of the River Elwy, with the villages of Llangernyw approximately 1800m (1.1 miles) to the south and Llanfair Talhaiarn 4750m (2.9 miles) to the east.

The building formerly in use as a stables (Morriss 2004, 11- 18) was originally constructed as a high-status house which has been dated stylistically to the mid-17<sup>th</sup> century. The building was recorded by the National Building Record in 1953 (NMRW C402338) and subsequently examined by Investigators from the Royal Commission on the Ancient and Historical Monuments of Wales in 1971 (NMRW C402337) and 2014 (NPRN 27210). The building shows evidence of both internal and external modification during its lifetime, including the addition of a two-storey extension north-eastwards to which a cart shed was later attached, and two single-storey outbuildings on the south-west and south-south-west.

The building formerly in use as a cart shed (Morriss 2004; 19-21), was constructed against the east gable of the stables / old house and is included within the interpretations of the house undertaken by the Royal Commission in 1971 and 2014.

### **3 METHODOLOGY: LEVEL 3 BUILDING RECORD**

The buildings are constructed of Limestone blocks with wooden window frames and lintels all under slated roofs. The buildings measure approximately 30m in length and 7m in width, and are orientated roughly north-east to south-west.

The building record will be completed to LEVEL 3 as described in *Understanding Historic Buildings: A guide to good recording practice* (Historic England 2016). A LEVEL 3 record is described as a descriptive and analytical record and will include:

- a photographic and descriptive record of the buildings; and
- an analysis and account of the building's origin, development and use.

### **3.1 Photographic Record**

The photographic record will include general views of the buildings within the local environs, particularly in relation to the other buildings in the farmstead and any surviving industrial archaeological remains (where present/identifiable). This record will include elevation photographs of the buildings with oblique shots used where direct elevation shots are not practical as well as visible details related to construction forms and techniques, including any phasing associated with original construction and later refurbishment. The buildings are in a dilapidated state there may be no direct access for recording to certain sections. The following methodology will apply:

Photographs will be taken by GAT with a *Nikon D3100* fitted with a *AF-S DX Zoom-NIKKOR 18-55mm f/3.5-5.6G ED VR* lens; the maximum image resolution will be 14.2 effective megapixels. The photographs will be taken in RAW format and recorded on GAT proformas (Appendix I). A photographic metadata table will be completed and included in the report; photographic images will be archived in TIFF format in accordance with the Royal Commission on Ancient and Historic Monuments of Wales 2015 *Guidelines for digital archives*.

### **3.2 Descriptive Record**

The descriptive record will be completed on GAT pro-formas and record the exterior and interior of the structures in terms of building fabric, appearance and content. This will include the materials used, the location, the composition and appearance of the rooms and any structural remains. Dimensions will be included for the height, width, length and structural thickness, as well as for any openings (doors, windows and apertures) and structural features. The existing plan and elevation drawings (Donald Insall Associates Drawing Nos. GYAS.0 102 to 105) will be used for general reference and for completing a measured survey. CAD digital copies of the architect's plan have been sourced.

A plan will also be produced by GAT indicating location and orientation of the photographic images taken.

### **3.3 Analysis and Account of the Building's Origin, Development and Use**

This will comprise of a desk-based study will be undertaken prior to the commencement of the survey, involving accessing records and historic cartography at the following repositories

- Regional Historic Environment Record (Clwyd Powys Archaeological Trust: 41 Broad Street, Welshpool, Powys SY21 7RR)
- National Monument Record (Royal Commission on the Ancient and Historical Monuments of Wales, Ffordd Penglais, Aberystwyth, Ceredigion SY23 3BU)
- National Library of Wales (Ffordd Penglais, Aberystwyth, Ceredigion SY23 3BU)

## 4 METHODOLOGY: WATCHING BRIEF

The watching brief will be completed by a GAT archaeologist and will be monitored by the GAT project manager. The project manager will be responsible for reviewing the fieldwork report. *Plant and security will be provided by the client.*

The work is currently scheduled for September 2016, with a minimum estimate of 1 day on site to excavate and record any material found during the watching brief. *Additional time and costs may be required if complex activity and stratigraphy is encountered.*

A report will be produced in a GAT format within two weeks of fieldwork completion. Should dateable artefacts and ecofacts be recovered, an interim report will be submitted summarising the results, along with an assessment of potential for analysis specification.

### 4.1 Watching Brief

(Reproduced from Chartered Institute for Archaeologists 2014, *Standard and Guidance for an Archaeological Watching Brief*)

The definition of an archaeological watching brief is a formal programme of observation and investigation conducted during any operation carried out for non-archaeological reasons where there is a possibility that archaeological deposits may be disturbed or destroyed. The programme will result in the preparation of a report and ordered archive.

An archaeological watching brief is divided into four categories according the Institute for Archaeologists *Standard and Guidance for an archaeological watching brief*:

- comprehensive (present during all ground disturbance)
- intensive (present during sensitive ground disturbance)
- intermittent (viewing the trenches after machining)
- partial (as and when seems appropriate).

A **comprehensive** watching brief category is not directly specified in CPAT correspondence. In an e-mail dated 18<sup>th</sup> August 2016, CPAT state that “The on-site archaeologist must be present during all works involving ground disturbance” (see

Appendix III). It is therefore recommended by GAT (further to CPAT approval) that a **comprehensive** watching brief is undertaken.

The watching brief will be carried out during the initial works which involve the reduction of the ground level within the cart shed and also any works outside to provide services to the building.

GAT will be in regular contact with the client and/or contractor to confirm the works programme and schedule. CPAT will be informed of any changes to working methodology from those outlined above.

## **4.2 Basic watching brief methodological procedures**

### *4.2.1 Watching Brief*

- All attendances and identified features will be recorded using GAT watching brief pro-formas (Appendix II)
- Photographic images will be taken using a digital SLR (Nikon D3100) camera set to maximum resolution (4,608 × 3,072 14.2 effective megapixels) in RAW format and will be converted to TIFF and JPEG format for archiving using Adobe Photoshop; a photographic record will be maintained on site using GAT pro-formas (Appendix VI) and digitised in *Microsoft Access* as part of the fieldwork archive and dissemination process;
- Any subsurface remains will be recorded photographically, with detailed notations and a measured survey.
- All archaeological features/deposits encountered will be manually cleaned and examined to determine extent, function, date and relationship to adjacent features. If discrete features such as pits, postholes or ditches are encountered, the following will apply: 50% sample of each sub-circular feature, 10% sample of each linear feature. Any large-scale or more detailed excavation required will be detailed in an appropriate **Further Archaeological Works Design**.
- All sections to be drawn at a minimum 1:10 scale. This will include the profiles/sections of any earthworks truncated or removed during the course of the car park groundworks. Sections will be drawn on GAT pro-forma permatrace.

- All plans to be at a minimum 1:20 scale. Plans will be drawn on GAT pro-forma permatrace.
- Should dateable artefacts and ecofacts be recovered, an interim report will be submitted summarising the results, along with an assessment of potential for analysis specification (in line with the MAP2 process).



### **4.3 Environmental Samples**

Should any deposits deemed suitable for dating will be taken from sealed contexts, with bulk samples from ditches and pit fills proposed as not less than 10 litres from each context. The sampling strategy will be undertaken in accordance with the principles set out in *Environmental Archaeology: a guide to the theory and practice of methods, from sampling and recovery to post-excavation* (English Heritage, 2011). Recourse will be made to relevant specialists for palaeoenvironmental analysis and dating. Any required specialists will be consulted during the fieldwork to advise GAT on a sampling strategy.

#### **4.4 Human Remains**

Should any finds of human remains be encountered, they will be left *in-situ*, covered and protected, and both the coroner and the CPAT Archaeologist informed. If removal is necessary it will take place under appropriate regulations and with due regard for health and safety issues. In order to excavate human remains, a Ministry of Justice licence is required under Section 25 of the Burials Act 1857 for the removal of any body or remains of any body from any place of burial. This will be applied for should human remains need to be investigated or moved.

## 4.5 Small Finds

Diagnostic artefacts will be retained for further examination and identification. Pottery sherds of 19<sup>th</sup> and 20<sup>th</sup> century date will be examined on site and the context from which they were retrieved noted but the sherds will not be retained. The artefacts will be treated according to guidelines issued by the UK Institute of Conservation (Watkinson and Neal 2001) in particular the advice provided within *First Aid for Finds* (Rescue 1999) and Historic England.

All finds are the property of the landowner; however, it is Trust policy to recommend that all finds are donated to an appropriate museum, in this case the *Bodelwyddan Castle Trust*, where they can receive specialist treatment and study. Access to finds must be granted to the Trust for a reasonable period to allow for analysis and for study and publication as necessary. Trust staff will undertake initial identification, but any additional advice would be sought from a wide range of consultants used by the Trust, including National Museums and Galleries of Wales at Cardiff.

All finds of treasure must be reported to the coroner for the district within fourteen days of discovery or identification of the items. Items declared Treasure Trove become the property of the Crown, on whose behalf the National Museums and Galleries of Wales acts as advisor on technical matters, and may be the recipient body for the objects.

The National Museums and Galleries of Wales will decide whether they or any other museum may wish to acquire the object. If no museum wishes to acquire the object, then the Secretary of State will be able to disclaim it. When this happens, the coroner will notify the occupier and landowner that he intends to return the object to the finder after 28 days unless he receives no objection. If the coroner receives an objection, the find will be retained until the dispute has been settled.

## 4.6 Further Archaeological Works

**The identification of significant archaeological features during the fieldwork may necessitate the production of a new project specification and the submission of new cost estimates to the contractor.**

The application of a further archaeological works design (FAWD) will be dependent on the initial identification, interpretation and examination of an archaeological feature and the identification of activity that cannot be addressed within the provisions of the current design, e.g., structures. The requirement for an FAWD will be determined in conjunction with CPAT through established communication lines and the monitoring process.

The FAWD will be instigated through a GAT produced document that will include:

- feature specific methodologies;
- artefact specialist requirements, with detail of appropriate specialist analysis;
- timings, staffing and resourcing;
- additional costs.

The FAWD document will need to be approved by CPAT.

## 4.7 Monitoring Arrangements

The CPAT Development Control Archaeologist will need to be informed of the project start date and of the subsequent progress and findings. This will allow the CPAT Archaeologist time to arrange monitoring visits and attend site meetings (if required) and enable discussion about the need or otherwise for FAWDs (if required) as features of potential archaeological significance are encountered. The CPAT contact details are as follows:

- Mark Walters [Mark@cpat.org.uk](mailto:Mark@cpat.org.uk) | 01938 553670

The role of the Development Control Section, Curatorial Services, in designing, instigating and monitoring the project should be clearly acknowledged in the report.

## 4.8 Fieldwork Archiving

Following the completion of the fieldwork, a programme of field work archiving will be completed based on following task list;

1. Pro-formas: all cross referenced and complete;
2. Photographic Metadata: completed in *Microsoft Access* and cross-referenced with all pro-formas;
3. Sections: all cross referenced and complete;
4. Survey data (if relevant): downloaded using a Computer Aided Design package imported into a GIS shapefile;
5. Plans (if relevant): all cross referenced and complete;
6. Artefacts (if relevant): quantified and identified; register completed;
7. Ecofacts (if relevant): quantified and register completed;
8. Context register (if relevant): quantified and register completed;

All data will be processed, final illustrations will be compiled and a report will be produced which will detail and synthesise the results. Location drawings and a sample of relevant photographs will be used to illustrate the reports.

## 4.9 Data processing and report compilation

Following completion of the stages outlined above, a report will be produced incorporating the following:

1. Front cover;
2. Inner cover;
3. Figures and Plates
4. Non-technical summary;
5. Introduction;
6. Methodology;
7. Level 3 Results;
8. Watching Brief Results;
9. Conclusion;
10. Figure/s (inc. location plan, trench plan and relevant section drawings)
11. Plates (as many as required)
12. Appendix I approved GAT project specification
13. Appendix II Photographic Metadata

Illustrations will include plans of the location of the study area and archaeological sites. Historical maps, when appropriate and if copyright permissions allow, will be included. Interpretative plans of the geophysical results will be included with the report. Photographs of relevant sites and of the study area where appropriate will be included.

A draft copy of the report will be sent to the regional Development Control Archaeologist (CPAT) within two weeks of completion of fieldwork. Should dateable artefacts and ecofacts be recovered, an interim report will be submitted summarising the results, along with an assessment of potential for analysis specification (in line with the MAP2 process).

A copy of the results will be supplied to the County Historic Environment Record held by the Clwyd Powys Archaeological Trust, on the understanding that this will become a public document after an appropriate period of time (generally not exceeding six months). The full site archive will be deposited within one month of the completion of the final report for publication. The archive will be deposited at a time and location to be agreed with the curator. The archive will include all site notes, finds, documents, drawings, photographs, digital data and a copy of the final report and any prior draft versions. In the archive

deposition statement located at the rear of the interim clients report all of the above items must be clearly quantified in tabular form and their ultimate location and proposed date of deposition stated.



## **5 PERSONNEL**

The project will be managed by John Roberts, Principal Archaeologist GAT Contracts Section. The archaeologist on site will be responsible for field management duties, including liaison with CPAT. The site archaeologist will have responsibility for maintaining the site archive, liaising with any specialists and for preparing and submitting the draft final report or interim report. The project manager will be responsible for reviewing and approving the report, which will then be submitted as per the arrangements defined above.

## **6 HEALTH AND SAFETY**

The GAT field team will be CSCS certified. A site specific risk assessment will be prepared prior to the start of fieldwork. The field team will be issued with required personal safety equipment, including high visibility jacket, steel toe-capped boots and hard hat.

## 7 INSURANCE

### Public Liability

Limit of Indemnity- £5,000,000 any one event in respect of Public Liability

INSURER Aviva Insurance Ltd  
POLICY TYPE Public Liability  
POLICY NUMBER 24 7651 01 CHC/000405  
EXPIRY DATE 22/06/2017

### Employers Liability

Limit of Indemnity- £10,000,000 any one occurrence.

INSURER Aviva Insurance Ltd  
POLICY TYPE Employers Liability  
POLICY NUMBER 24 765101 CHC/000405  
EXPIRY DATE 22/06/2017

### Professional Indemnity

Limit of Indemnity- £5,000,000 in respect of each and every claim

INSURER Hiscox Insurance Company  
POLICY TYPE Professional Indemnity  
POLICY NUMBER HU PI 9129989/1208  
EXPIRY DATE 23/07/2017

## 8 SOURCES CONSULTED

CADW 1999 *Stables and Cartshed at Glan yr Afon, Llangernyw*, Listed Building **21484**

Conwy County Council *Planning Application 0/42511*

CPAT 2004 *Llangernyw, Glan yr Afon, assessment project 2004*, PRN **112434**

Donald Insall Associates Drawing Reference GYAS.0 102 to 105

English Heritage 1991 *Management of Archaeological Projects*

English Heritage, 2015, *Management of Research Projects in the Historic Environment (MoRPHE)*

Historic England 2016 *Understanding Historic Buildings: A Guide to Good Recording Practice*

Morriss, R. K. 2004 'Glan yr Afon, Llangernyw, Denbighshire: An Outline Archaeological & Architectural Assessment', *Mercian Heritage Services* **229**, Bromlow.

NMRW 1971 *Descriptive note and pencil drawing of floor plan, showing periods of construction, for Glan Yr Afon, Llangernyw*, **C402337**

NMRW 1954 *Photo survey of Glan Yr Afon, Llangernyw*, **C402338**

NMRW 2014 *Glanyrafon (Old House)*, NPRN **27210**

WG 2016 *Planning Policy Wales*, Edition **8**

RCAHMW 2015 *Guidelines for Digital Archives*, Version **1**

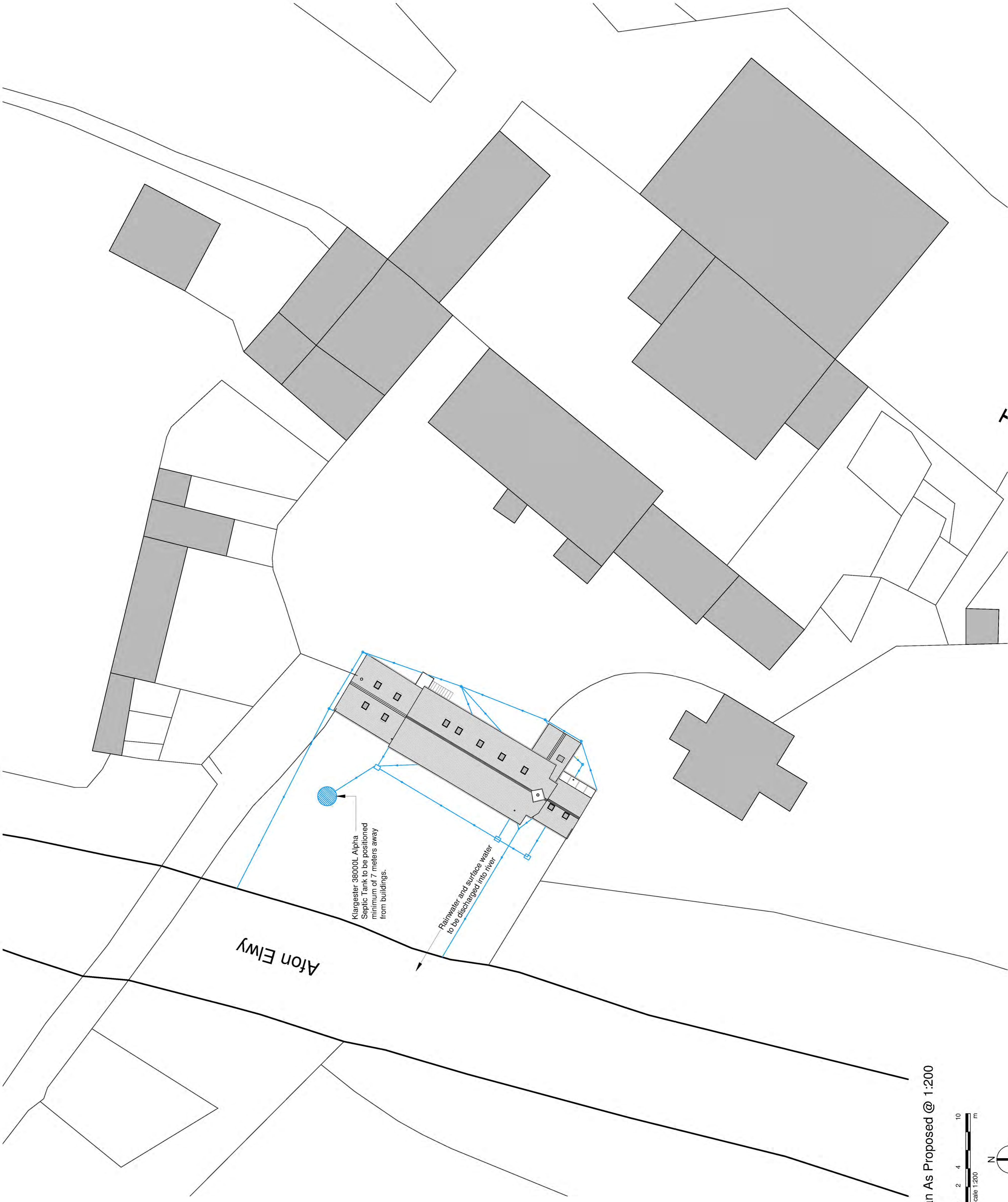
*Standard and guidance for an archaeological watching brief*, (Chartered Institute for Archaeologists, 2014)

*Standard and guidance for the archaeological investigation and recording of standing buildings or structures* (Chartered Institute for Archaeologists, 2014)

WO Circular 60/96 *Planning and the Historic Environment: Archaeology and the Historic Environment: Archaeology.*

**FIGURE 01**

**Location Map**



**Notes:**

- 1 Any other format drawing is to be read only in conjunction with and at the scale of the accompanying pdf.
- 2 Status 'C' drawing (Construction): All dimensions are to be checked on site by the contractor, scaling is for Planning purposes only. Unless otherwise indicated, all dimensions are in millimeters. All dimensions are to be checked on site by the contractor, scaling is for Planning purposes only. All dimensions are to be checked on site by the contractor, scaling is for Planning purposes only. All dimensions are to be checked on site by the contractor, scaling is for Planning purposes only.
- 3 In the event of any query, please contact us immediately.
- 4 This drawing contains survey information by others and is to be used solely for the purposes for which it was issued.

© 2015 DONALD INSALL ASSOCIATES LTD

**CONWY COUNTY BOROUGH  
COUNCIL  
DEVELOPMENT CONTROL**  
RECEIVED: 29/02/2016  
APPLICATION NO: 04/2510  
04/2511

Rev	Date	Drawn/Author	Revision
A	24.11.2015	GBR	MTD
-	13.11.2015	GBR	MTD

**Donald Insall Associates**  
Chartered Architects and Historic Building Consultants

Y Becws, Pool Lane, Conwy LL32 8PZ  
T: (+44)01492 592 378 [www.insall-architects.co.uk](http://www.insall-architects.co.uk)

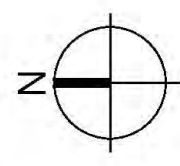
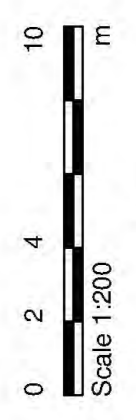
Glan yr Afon Stables and Cart Shed  
Conservation and Conversion Project

Site Plan As Proposed

Project	No
GYAS.01	200

Scale	Status	Rev
(A1) 1:200	P	A

Site Plan As Proposed @ 1:200



## **APPENDIX I**

**Reproduction of Gwynedd Archaeological Trust photographic record  
pro-forma**





## **APPENDIX II**

**Reproduction of Gwynedd Archaeological Trust watching brief record  
pro-forma**

YMDDIRIEDOLAETH ARCHAEOLEGOL GWYNEDD ARCHAEOLOGICAL TRUST

WATCHING BRIEF DAY RECORD

*Date*

*Project name*

*Project number*

*Compiler*

*Location*

*Description*

Times of travelling and on-site

Drawn record details

Photographic record details

## **APPENDIX II**

### **Reproduction of Gwynedd Archaeological Trust Photographic Metadata**

<b>File reference</b>	<b>Project name</b>	<b>Activity</b>	<b>Description</b>	<b>View from</b>	<b>Scale (s)</b>	<b>Date</b>	<b>Originating person</b>	<b>Originating organisation</b>	<b>Plate</b>
G2479_001	Glan Yr Afon	Building Recording	General shot of Cart Shed G04 in relation to Glan yr Afon House G01/G02/G03/F01/F02/F03 (Buildings C and B in Morriss Report)	E	-	19/09/2016	Spencer Smith	Gwynedd Archaeological Trust	5
G2479_002	Glan Yr Afon	Building Recording	SE elevation of Cart Shed G04 (external)	SE	-	19/09/2016	Spencer Smith	Gwynedd Archaeological Trust	33
G2479_003	Glan Yr Afon	Building Recording	E elevation of Cart Shed G04 (external)	E	-	19/09/2016	Spencer Smith	Gwynedd Archaeological Trust	12
G2479_004	Glan Yr Afon	Building Recording	NE elevation Cart Shed G04 (external)	NE	-	19/09/2016	Spencer Smith	Gwynedd Archaeological Trust	1
G2479_005	Glan Yr Afon	Building Recording	NE elevation Cart Shed G04 (external)	N	-	19/09/2016	Spencer Smith	Gwynedd Archaeological Trust	14
G2479_006	Glan Yr Afon	Building Recording	NW elevation of Cart Shed G04 (external)	NW	-	19/09/2016	Spencer Smith	Gwynedd Archaeological Trust	
G2479_007	Glan Yr Afon	Building Recording	NE elevation Cart Shed G04 (internal)	SW	-	19/09/2016	Spencer Smith	Gwynedd Archaeological Trust	37
G2479_008	Glan Yr Afon	Building Recording	NW elevation of Cart Shed G04 (internal)	SE	-	19/09/2016	Spencer Smith	Gwynedd Archaeological Trust	36
G2479_009	Glan Yr Afon	Building Recording	NW elevation of Cart Shed G04 (internal)	SE	-	19/09/2016	Spencer Smith	Gwynedd Archaeological Trust	
G2479_010	Glan Yr Afon	Building Recording	SW elevation of Cart Shed G04 (internal)	NE	-	19/09/2016	Spencer Smith	Gwynedd Archaeological Trust	35

<b>File reference</b>	<b>Project name</b>	<b>Activity</b>	<b>Description</b>	<b>View from</b>	<b>Scale (s)</b>	<b>Date</b>	<b>Originating person</b>	<b>Originating organisation</b>	<b>Plate</b>
G2479_011	Glan Yr Afon	Building Recording	Butt joint between Cart Shed G04 and external access stairs, bricks visible at base of wall	NE	-	19/09/2016	Spencer Smith	Gwynedd Archaeological Trust	38
G2479_012	Glan Yr Afon	Building Recording	Cobbled surface partly revealed under sawdust covering floor of Cart Shed G04	NE	-	19/09/2016	Spencer Smith	Gwynedd Archaeological Trust	39
G2479_013	Glan Yr Afon	Building Recording	SE elevation of Cart Shed G04 (internal)	NW	-	19/09/2016	Spencer Smith	Gwynedd Archaeological Trust	34
G2479_014	Glan Yr Afon	Building Recording	NW elevation of Grain Store F04 - upper floor- (internal)	SE	-	19/09/2016	Spencer Smith	Gwynedd Archaeological Trust	58
G2479_015	Glan Yr Afon	Building Recording	NW/SW elevation of Grain Store F04 - upper floor (internal)	E	-	19/09/2016	Spencer Smith	Gwynedd Archaeological Trust	59
G2479_016	Glan Yr Afon	Building Recording	SW elevation of Grain Store F04 - upper floor - (internal)	NE	-	19/09/2016	Spencer Smith	Gwynedd Archaeological Trust	55
G2479_017	Glan Yr Afon	Building Recording	SW/SE elevation of Grain Store F04 - upper floor- (internal)	N	-	19/09/2016	Spencer Smith	Gwynedd Archaeological Trust	60
G2479_018	Glan Yr Afon	Building Recording	SE elevation of Grain Store F04 - upper floor - (internal)	NW	-	19/09/2016	Spencer Smith	Gwynedd Archaeological Trust	57
G2479_019	Glan Yr Afon	Building Recording	SE/NE elevation of Grain Store F04 - upper floor (internal)	W	-	19/09/2016	Spencer Smith	Gwynedd Archaeological Trust	
G2479_020	Glan Yr Afon	Building Recording	NE elevation of Grain Store F04 - upper floor - (internal)	SW	-	19/09/2016	Spencer Smith	Gwynedd Archaeological Trust	61

<b>File reference</b>	<b>Project name</b>	<b>Activity</b>	<b>Description</b>	<b>View from</b>	<b>Scale (s)</b>	<b>Date</b>	<b>Originating person</b>	<b>Originating organisation</b>	<b>Plate</b>
G2479_021	Glan Yr Afon	Building Recording	NE/NW elevation of Grain Store F04 - upper floor - (internal)	S	-	19/09/2016	Spencer Smith	Gwynedd Archaeological Trust	62
G2479_022	Glan Yr Afon	Building Recording	Example of graffiti from SW wall of Grain Store F04 - upper floor - (internal)	NE	-	19/09/2016	Spencer Smith	Gwynedd Archaeological Trust	
G2479_023	Glan Yr Afon	Building Recording	Example of graffiti from SW elevation of roof truss of Grain Store F04 - upper floor - (internal)	NE	-	19/09/2016	Spencer Smith	Gwynedd Archaeological Trust	56
G2479_024	Glan Yr Afon	Building Recording	NE elevation of Outbuilding G02	SW	-	19/09/2016	Spencer Smith	Gwynedd Archaeological Trust	2
G2479_025	Glan Yr Afon	Building Recording	SW/SE elevation of Outbuilding G02	S	-	19/09/2016	Spencer Smith	Gwynedd Archaeological Trust	30
G2479_026	Glan Yr Afon	Building Recording	SW/SE elevation of Outbuilding G03	S	-	19/09/2016	Spencer Smith	Gwynedd Archaeological Trust	3
G2479_027	Glan Yr Afon	Building Recording	North elevation of Outbuilding G03	N	-	19/09/2016	Spencer Smith	Gwynedd Archaeological Trust	32
G2479_028	Glan Yr Afon	Building Recording	External staircase to Grain Store F04	SE	-	19/09/2016	Spencer Smith	Gwynedd Archaeological Trust	54
G2479_029	Glan Yr Afon	Building Recording	External staircase to Grain Store F04	SW	-	19/09/2016	Spencer Smith	Gwynedd Archaeological Trust	13
G2479_030	Glan Yr Afon	Building Recording	NE end of G01/F01 showing vertical crack and slit window	SE	-	19/09/2016	Spencer Smith	Gwynedd Archaeological Trust	8

<b>File reference</b>	<b>Project name</b>	<b>Activity</b>	<b>Description</b>	<b>View from</b>	<b>Scale (s)</b>	<b>Date</b>	<b>Originating person</b>	<b>Originating organisation</b>	<b>Plate</b>
G2479_031	Glan Yr Afon	Building Recording	NE end of G01/F01 showing structural failings around ground floor window	SE	-	19/09/2016	Spencer Smith	Gwynedd Archaeological Trust	6
G2479_032	Glan Yr Afon	Building Recording	Central portion of G01/F01 showing entrance doorway	SE	-	19/09/2016	Spencer Smith	Gwynedd Archaeological Trust	7
G2479_033	Glan Yr Afon	Building Recording	Relationship of external stairs, string course and structural failure (G01)	S	-	19/09/2016	Spencer Smith	Gwynedd Archaeological Trust	9
G2479_034	Glan Yr Afon	Building Recording	Limestone quoins visible in both inner and outer faces (G01)	SE	-	19/09/2016	Spencer Smith	Gwynedd Archaeological Trust	10
G2479_035	Glan Yr Afon	Building Recording	Limestone quoins around door and well coursed blocks above (G01)	SE	-	19/09/2016	Spencer Smith	Gwynedd Archaeological Trust	
G2479_036	Glan Yr Afon	Building Recording	Collapsing repair between central door of G01 and Outbuilding G02	SE	-	19/09/2016	Spencer Smith	Gwynedd Archaeological Trust	11
G2479_037	Glan Yr Afon	Building Recording	Butt joint below window next to Outbuilding G02	SE	-	19/09/2016	Spencer Smith	Gwynedd Archaeological Trust	
G2479_038	Glan Yr Afon	Building Recording	Evidence for earlier roofline above Outbuilding G02 and limestone butt joint above centreline of Outbuilding G02	SE	-	19/09/2016	Spencer Smith	Gwynedd Archaeological Trust	
G2479_039	Glan Yr Afon	Building Recording	Roofline of upper gable of G01/F01 above G04/F04	SE	-	19/09/2016	Spencer Smith	Gwynedd Archaeological Trust	
G2479_040	Glan Yr Afon	Building Recording	NW wall of G01/F01 showing complex phasing	NW	-	19/09/2016	Spencer Smith	Gwynedd Archaeological Trust	17



<b>File reference</b>	<b>Project name</b>	<b>Activity</b>	<b>Description</b>	<b>View from</b>	<b>Scale (s)</b>	<b>Date</b>	<b>Originating person</b>	<b>Originating organisation</b>	<b>Plate</b>
G2479_041	Glan Yr Afon	Building Recording	NW wall of G01/F01 showing complex phasing	NW	-	19/09/2016	Spencer Smith	Gwynedd Archaeological Trust	15
G2479_042	Glan Yr Afon	Building Recording	NW wall of G01/F01 showing complex phasing	NW	-	19/09/2016	Spencer Smith	Gwynedd Archaeological Trust	
G2479_043	Glan Yr Afon	Building Recording	NW wall of G01/F01 B showing complex phasing	NW	-	19/09/2016	Spencer Smith	Gwynedd Archaeological Trust	
G2479_044	Glan Yr Afon	Building Recording	Chimney breast, chimney stack and quoins of both breast and gable of NW wall of G01/F01	NW	-	19/09/2016	Spencer Smith	Gwynedd Archaeological Trust	
G2479_045	Glan Yr Afon	Building Recording	Chimney breast of G01/F01 showing butt joint to Outbuilding G02	W	-	19/09/2016	Spencer Smith	Gwynedd Archaeological Trust	
G2479_046	Glan Yr Afon	Building Recording	Chimney breast of G01/F01 showing scar of Outbuilding G02 and vertical crack in breast	NW	-	19/09/2016	Spencer Smith	Gwynedd Archaeological Trust	4
G2479_047	Glan Yr Afon	Building Recording	Repairs to original wall of G01/F01 (right) and (left) in mixture of bricks and water washed stones	NW	1x2m	19/09/2016	Spencer Smith	Gwynedd Archaeological Trust	
G2479_048	Glan Yr Afon	Building Recording	Blocked doorway in NW elevation of G01/F01 with butt joint either side	NW	1x2m	19/09/2016	Spencer Smith	Gwynedd Archaeological Trust	16
G2479_049	Glan Yr Afon	Building Recording	Vertical joints in upper part of NW elevation of G01/F01	NW	-	19/09/2016	Spencer Smith	Gwynedd Archaeological Trust	
G2479_050	Glan Yr Afon	Building Recording	Vertical joints in upper part of NW elevation of G01/F01	NW	-	19/09/2016	Spencer Smith	Gwynedd Archaeological Trust	

<b>File reference</b>	<b>Project name</b>	<b>Activity</b>	<b>Description</b>	<b>View from</b>	<b>Scale (s)</b>	<b>Date</b>	<b>Originating person</b>	<b>Originating organisation</b>	<b>Plate</b>
G2479_051	Glan Yr Afon	Building Recording	Vertical joints in upper part of NW elevation of G01/F01	NW	-	19/09/2016	Spencer Smith	Gwynedd Archaeological Trust	
G2479_052	Glan Yr Afon	Building Recording	Vertical joints in upper part of NW elevation of G01/F01	NW	-	19/09/2016	Spencer Smith	Gwynedd Archaeological Trust	
G2479_053	Glan Yr Afon	Building Recording	Interior of G01 looking SW towards chimney breast showing blockages - two successive and stable stalls	NE	-	19/09/2016	Spencer Smith	Gwynedd Archaeological Trust	
G2479_054	Glan Yr Afon	Building Recording	Interior of G01 looking SW towards chimney breast showing blockages - two successive and stable stalls	NE	1x1m	19/09/2016	Spencer Smith	Gwynedd Archaeological Trust	
G2479_055	Glan Yr Afon	Building Recording	Detailed of blocked chimney in G01 showing two successive blockages	NE	1x1m	19/09/2016	Spencer Smith	Gwynedd Archaeological Trust	
G2479_056	Glan Yr Afon	Building Recording	Three horse collars hanging above chimney breast opening in G01	NE	1x1m	19/09/2016	Spencer Smith	Gwynedd Archaeological Trust	23
G2479_057	Glan Yr Afon	Building Recording	Stall 01 - only stall accessible due to the debris on floor in G01	SE	-	19/09/2016	Spencer Smith	Gwynedd Archaeological Trust	
G2479_058	Glan Yr Afon	Building Recording	Blocked doorway between G01 and Outbuilding G02	NW	1x1m	19/09/2016	Spencer Smith	Gwynedd Archaeological Trust	
G2479_059	Glan Yr Afon	Building Recording	Rendered feed storage area built into window opening in G01	NW	-	19/09/2016	Spencer Smith	Gwynedd Archaeological Trust	22
G2479_060	Glan Yr Afon	Building Recording	Ground floor window in G01 showing uneven splays	NW	-	19/09/2016	Spencer Smith	Gwynedd Archaeological Trust	

<b>File reference</b>	<b>Project name</b>	<b>Activity</b>	<b>Description</b>	<b>View from</b>	<b>Scale (s)</b>	<b>Date</b>	<b>Originating person</b>	<b>Originating organisation</b>	<b>Plate</b>
G2479_061	Glan Yr Afon	Building Recording	Splayed internal jamb to central access door in G01	NW	-	19/09/2016	Spencer Smith	Gwynedd Archaeological Trust	
G2479_062	Glan Yr Afon	Building Recording	Straight internal jamb to central access door in G01	NW	-	19/09/2016	Spencer Smith	Gwynedd Archaeological Trust	
G2479_063	Glan Yr Afon	Building Recording	Current access arrangements to upper floor (F01/F02/F03) and evidence for a seat in the window recess (G01)	SW	1x1m	19/09/2016	Spencer Smith	Gwynedd Archaeological Trust	
G2479_064	Glan Yr Afon	Building Recording	Well constructed splays in slit window within G01	SE	-	19/09/2016	Spencer Smith	Gwynedd Archaeological Trust	
G2479_065	Glan Yr Afon	Building Recording	Wall render still in situ on NE face of interior wall of G01	NE	-	19/09/2016	Spencer Smith	Gwynedd Archaeological Trust	
G2479_066	Glan Yr Afon	Building Recording	Chimney breast in end of building showing timber lintel above, reduction in width and built in oven on left of photo (G01)	SW	1x1m	19/09/2016	Spencer Smith	Gwynedd Archaeological Trust	28
G2479_067	Glan Yr Afon	Building Recording	Open recess above chimney breast (G01)	SW	-	19/09/2016	Spencer Smith	Gwynedd Archaeological Trust	
G2479_068	Glan Yr Afon	Building Recording	Blocked recess above chimney breast (G01)	SW	-	19/09/2016	Spencer Smith	Gwynedd Archaeological Trust	
G2479_069	Glan Yr Afon	Building Recording	Chimney breast in F01 Hayloft	SW	-	19/09/2016	Spencer Smith	Gwynedd Archaeological Trust	43
G2479_070	Glan Yr Afon	Building Recording	Blackened roof truss, N corner in F01 Hayloft	SW	-	19/09/2016	Spencer Smith	Gwynedd Archaeological Trust	

<b>File reference</b>	<b>Project name</b>	<b>Activity</b>	<b>Description</b>	<b>View from</b>	<b>Scale (s)</b>	<b>Date</b>	<b>Originating person</b>	<b>Originating organisation</b>	<b>Plate</b>
G2479_071	Glan Yr Afon	Building Recording	Blackened roof truss, S corner in F01 Hayloft	SW	-	19/09/2016	Spencer Smith	Gwynedd Archaeological Trust	
G2479_072	Glan Yr Afon	Building Recording	Blocked window in NE internal elevation and sloped to the roof eaves in F01 Hayloft	SE	-	19/09/2016	Spencer Smith	Gwynedd Archaeological Trust	
G2479_073	Glan Yr Afon	Building Recording	Mezzanine truss N corner F01 Hayloft	NE	-	19/09/2016	Spencer Smith	Gwynedd Archaeological Trust	
G2479_074	Glan Yr Afon	Building Recording	Mezzanine truss S corner F01 Hayloft	NE	-	19/09/2016	Spencer Smith	Gwynedd Archaeological Trust	
G2479_075	Glan Yr Afon	Building Recording	Partition with plater work, N corner F01 Hayloft	NE	-	19/09/2016	Spencer Smith	Gwynedd Archaeological Trust	41
G2479_076	Glan Yr Afon	Building Recording	Partition with plasterwork, S corner F01 Hayloft	NE	-	19/09/2016	Spencer Smith	Gwynedd Archaeological Trust	42
G2479_077	Glan Yr Afon	Building Recording	Central portion of SE internal elevation. Access point in floor F01 Hayloft	NW	-	19/09/2016	Spencer Smith	Gwynedd Archaeological Trust	40
G2479_078	Glan Yr Afon	Building Recording	Decorative plasterwork - lower portion. F01 Hayloft / F03 Store	SW	1x1m	19/09/2016	Spencer Smith	Gwynedd Archaeological Trust	
G2479_079	Glan Yr Afon	Building Recording	Decorative plasterwork - lower portion - detail. F01 Hayloft / F03 Store	SW	1x1m	19/09/2016	Spencer Smith	Gwynedd Archaeological Trust	
G2479_080	Glan Yr Afon	Building Recording	Decorative plasterwork - upper portion - detail. F01 Hayloft / F03 Store	SW	1x1m	19/09/2016	Spencer Smith	Gwynedd Archaeological Trust	

<b>File reference</b>	<b>Project name</b>	<b>Activity</b>	<b>Description</b>	<b>View from</b>	<b>Scale (s)</b>	<b>Date</b>	<b>Originating person</b>	<b>Originating organisation</b>	<b>Plate</b>
G2479_081	Glan Yr Afon	Building Recording	Decorative plasterwork - upper and lower panels - F01 Hayloft / F03 Store	SW	1x1m	19/09/2016	Spencer Smith	Gwynedd Archaeological Trust	44
G2479_082	Glan Yr Afon	Building Recording	Decorative plaster - upper portion - detail - F01 Hayloft / F03 Store	SW	-	19/09/2016	Spencer Smith	Gwynedd Archaeological Trust	46
G2479_083	Glan Yr Afon	Building Recording	Representative graffiti from roof of mezzanine, engraved / F01 Hayloft	-	-	19/09/2016	Spencer Smith	Gwynedd Archaeological Trust	47
G2479_084	Glan Yr Afon	Building Recording	Representative graffiti from roof of mezzanine, painted / F01 Hayloft	-	-	19/09/2016	Spencer Smith	Gwynedd Archaeological Trust	48
G2479_085	Glan Yr Afon	Building Recording	Decorated plaster above cast iron window in elevation F01 Hayloft	SE	-	19/09/2016	Spencer Smith	Gwynedd Archaeological Trust	
G2479_086	Glan Yr Afon	Building Recording	Decorated plaster to partition below mezzanine F01 Hayloft	SE	-	19/09/2016	Spencer Smith	Gwynedd Archaeological Trust	45
G2479_087	Glan Yr Afon	Building Recording	Original window blocked and replaced by smaller narrower window F01 Hayloft	SW	-	19/09/2016	Spencer Smith	Gwynedd Archaeological Trust	
G2479_088	Glan Yr Afon	Building Recording	Corridor running down NW side of upper floor. Unable to survey (UTS) end. F01 Hayloft	NE	-	19/09/2016	Spencer Smith	Gwynedd Archaeological Trust	
G2479_089	Glan Yr Afon	Building Recording	Low quality lathe and plaster forming internal room upstairs. F03 Store	N	-	19/09/2016	Spencer Smith	Gwynedd Archaeological Trust	52
G2479_090	Glan Yr Afon	Building Recording	Grffiti on low quality lathe and plaster forming internal room upstairs. F03 Store	NW	-	19/09/2016	Spencer Smith	Gwynedd Archaeological Trust	53

<b>File reference</b>	<b>Project name</b>	<b>Activity</b>	<b>Description</b>	<b>View from</b>	<b>Scale (s)</b>	<b>Date</b>	<b>Originating person</b>	<b>Originating organisation</b>	<b>Plate</b>
G2479_091	Glan Yr Afon	Building Recording	Corridor formed on SE side of F03 Store showing timber in place	SW	-	19/09/2016	Spencer Smith	Gwynedd Archaeological Trust	50
G2479_092	Glan Yr Afon	Building Recording	Low quality lathe and plaster wall forming corridor down NW side of building F02 Store	NW	-	19/09/2016	Spencer Smith	Gwynedd Archaeological Trust	49
G2479_093	Glan Yr Afon	Building Recording	Blocked fireplace with internal still in place, low quality plaster. F02 Store	NW	-	19/09/2016	Spencer Smith	Gwynedd Archaeological Trust	51
G2479_094	Glan Yr Afon	Building Recording	Relationship between fireplace, gable, roof and wall. F02 Store	NE	-	19/09/2016	Spencer Smith	Gwynedd Archaeological Trust	
G2479_095	Glan Yr Afon	Building Recording	Damaged roof at NE end in NE room above F02 Store	NW	-	19/09/2016	Spencer Smith	Gwynedd Archaeological Trust	
G2479_096	Glan Yr Afon	Building Recording	Damaged floor at NE end in F02 Store	NW	-	19/09/2016	Spencer Smith	Gwynedd Archaeological Trust	
G2479_097	Glan Yr Afon	Building Recording	View of Glan yr Afon from NW	NW	-	19/09/2016	Spencer Smith	Gwynedd Archaeological Trust	18
G2479_098	Glan Yr Afon	Building Recording	N wall and cobbled floor in Cart Shed G04	S	-	10/08/2017	Spencer Smith	Gwynedd Archaeological Trust	
G2479_099	Glan Yr Afon	Building Recording	N wall and cobbled floor in Cart Shed G04	S	1x1m	10/08/2017	Spencer Smith	Gwynedd Archaeological Trust	
G2479_100	Glan Yr Afon	Building Recording	N wall and cobbled floor in Cart Shed G04	S	1x1m	10/08/2017	Spencer Smith	Gwynedd Archaeological Trust	63

<b>File reference</b>	<b>Project name</b>	<b>Activity</b>	<b>Description</b>	<b>View from</b>	<b>Scale (s)</b>	<b>Date</b>	<b>Originating person</b>	<b>Originating organisation</b>	<b>Plate</b>
G2479_101	Glan Yr Afon	Building Recording	E opening and cobbled floor in Cart Shed G04	W	1x1m	10/08/2017	Spencer Smith	Gwynedd Archaeological Trust	64
G2479_102	Glan Yr Afon	Building Recording	S wall and cobbled floor in Cart Shed G04	N	1x1m	10/08/2017	Spencer Smith	Gwynedd Archaeological Trust	65
G2479_103	Glan Yr Afon	Building Recording	W wall and cobbled floor in Cart Shed G04	E	1x1m	10/08/2017	Spencer Smith	Gwynedd Archaeological Trust	
G2479_104	Glan Yr Afon	Building Recording	E opening and cobbled floor in Cart Shed G04	N	1x1m	10/08/2017	Spencer Smith	Gwynedd Archaeological Trust	
G2479_105	Glan Yr Afon	Building Recording	W wall and cobbled floor in Cart Shed G04	E	1x1m	10/08/2017	Spencer Smith	Gwynedd Archaeological Trust	
G2479_106	Glan Yr Afon	Building Recording	W wall and cobbled floor in Cart Shed G04	E	1x1m	10/08/2017	Spencer Smith	Gwynedd Archaeological Trust	
G2479_107	Glan Yr Afon	Building Recording	E opening and cobbled floor in Cart Shed G04	W	1x1m	10/08/2017	Spencer Smith	Gwynedd Archaeological Trust	
G2479_108	Glan Yr Afon	Building Recording	E opening and cobbled floor in Cart Shed G04	W	1x1m	10/08/2017	Spencer Smith	Gwynedd Archaeological Trust	
G2479_109	Glan Yr Afon	Building Recording	Rebuilding of external stairs up to F04 Grain Store	E	-	10/08/2017	Spencer Smith	Gwynedd Archaeological Trust	
G2479_110	Glan Yr Afon	Building Recording	Southernmost stall (Stall 01) in G01 Stables	E	-	10/08/2017	Spencer Smith	Gwynedd Archaeological Trust	

<b>File reference</b>	<b>Project name</b>	<b>Activity</b>	<b>Description</b>	<b>View from</b>	<b>Scale (s)</b>	<b>Date</b>	<b>Originating person</b>	<b>Originating organisation</b>	<b>Plate</b>
G2479_111	Glan Yr Afon	Building Recording	Southernmost stall (Stall 01) in G01 Stables	E	1x1m	10/08/2017	Spencer Smith	Gwynedd Archaeological Trust	
G2479_112	Glan Yr Afon	Building Recording	Southernmost stall (Stall 01) in G01 Stables - Detail of manger and trough	E	1x1m	10/08/2017	Spencer Smith	Gwynedd Archaeological Trust	
G2479_113	Glan Yr Afon	Building Recording	Southernmost stall (Stall 01) in G01 Stables - Detail of wall and manger	E	-	10/08/2017	Spencer Smith	Gwynedd Archaeological Trust	
G2479_114	Glan Yr Afon	Building Recording	Stall 02 in G01 Stables	E	-	10/08/2017	Spencer Smith	Gwynedd Archaeological Trust	
G2479_115	Glan Yr Afon	Building Recording	Stall 02 in G01 Stables	E	1x1m	10/08/2017	Spencer Smith	Gwynedd Archaeological Trust	
G2479_116	Glan Yr Afon	Building Recording	Stall 02 in G01 Stables - Detail of manger and trough	E	1x1m	10/08/2017	Spencer Smith	Gwynedd Archaeological Trust	
G2479_117	Glan Yr Afon	Building Recording	Stall 02 in G01 Stables - Detail of wall and manger	E	-	10/08/2017	Spencer Smith	Gwynedd Archaeological Trust	
G2479_118	Glan Yr Afon	Building Recording	Stall 03 in G01 Stables	E	-	10/08/2017	Spencer Smith	Gwynedd Archaeological Trust	
G2479_119	Glan Yr Afon	Building Recording	Stall 03 in G01 Stables	E	1x1m	10/08/2017	Spencer Smith	Gwynedd Archaeological Trust	
G2479_120	Glan Yr Afon	Building Recording	Stall 03 in G01 Stables - Detail of manger and trough	E	1x1m	10/08/2017	Spencer Smith	Gwynedd Archaeological Trust	



<b>File reference</b>	<b>Project name</b>	<b>Activity</b>	<b>Description</b>	<b>View from</b>	<b>Scale (s)</b>	<b>Date</b>	<b>Originating person</b>	<b>Originating organisation</b>	<b>Plate</b>
G2479_121	Glan Yr Afon	Building Recording	Stall 03 in G01 Stables - Detail of wall and manger	E	-	10/08/2017	Spencer Smith	Gwynedd Archaeological Trust	
G2479_122	Glan Yr Afon	Building Recording	Internal elevation of East wall of G01 Stables from Stall 01	W	-	10/08/2017	Spencer Smith	Gwynedd Archaeological Trust	31
G2479_123	Glan Yr Afon	Building Recording	Internal elevation of East wall of G01 Stables from Stall 02	W	-	10/08/2017	Spencer Smith	Gwynedd Archaeological Trust	
G2479_124	Glan Yr Afon	Building Recording	Internal elevation of East wall of G01 Stables from Stall 01	W	-	10/08/2017	Spencer Smith	Gwynedd Archaeological Trust	
G2479_125	Glan Yr Afon	Building Recording	Internal elevation of East wall of G01 Stables from Stall 03	W	-	10/08/2017	Spencer Smith	Gwynedd Archaeological Trust	
G2479_126	Glan Yr Afon	Building Recording	Internal elevation of East wall of G01 Stables from Stall 03	W	-	10/08/2017	Spencer Smith	Gwynedd Archaeological Trust	
G2479_127	Glan Yr Afon	Building Recording	Loose box in G01 Stables	SE	-	10/08/2017	Spencer Smith	Gwynedd Archaeological Trust	20
G2479_128	Glan Yr Afon	Building Recording	N wall of Loose box in G01 Stables	S	-	10/08/2017	Spencer Smith	Gwynedd Archaeological Trust	
G2479_129	Glan Yr Afon	Building Recording	N wall of Loose box in G01 Stables	SW	-	10/08/2017	Spencer Smith	Gwynedd Archaeological Trust	
G2479_130	Glan Yr Afon	Building Recording	E partition of Loose box in G01 Stables	W	-	10/08/2017	Spencer Smith	Gwynedd Archaeological Trust	

<b>File reference</b>	<b>Project name</b>	<b>Activity</b>	<b>Description</b>	<b>View from</b>	<b>Scale (s)</b>	<b>Date</b>	<b>Originating person</b>	<b>Originating organisation</b>	<b>Plate</b>
G2479_131	Glan Yr Afon	Building Recording	E partition of Loose box in G01 Stables	NW	-	10/08/2017	Spencer Smith	Gwynedd Archaeological Trust	
G2479_132	Glan Yr Afon	Building Recording	S partition of Loose box in G01 Stables	N	-	10/08/2017	Spencer Smith	Gwynedd Archaeological Trust	
G2479_133	Glan Yr Afon	Building Recording	S partition of Loose box in G01 Stables	NE	-	10/08/2017	Spencer Smith	Gwynedd Archaeological Trust	
G2479_134	Glan Yr Afon	Building Recording	W wall of Loose box in G01 Stables	E	-	10/08/2017	Spencer Smith	Gwynedd Archaeological Trust	
G2479_135	Glan Yr Afon	Building Recording	Roof			10/08/2017	Spencer Smith	Gwynedd Archaeological Trust	
G2479_136	Glan Yr Afon	Building Recording	Roof			10/08/2017	Spencer Smith	Gwynedd Archaeological Trust	
G2479_137	Glan Yr Afon	Building Recording	Roof			10/08/2017	Spencer Smith	Gwynedd Archaeological Trust	
G2479_138	Glan Yr Afon	Building Recording	Roof			10/08/2017	Spencer Smith	Gwynedd Archaeological Trust	
G2479_139	Glan Yr Afon	Building Recording	Roof			10/08/2017	Spencer Smith	Gwynedd Archaeological Trust	
G2479_140	Glan Yr Afon	Building Recording	Roof			10/08/2017	Spencer Smith	Gwynedd Archaeological Trust	

<b>File reference</b>	<b>Project name</b>	<b>Activity</b>	<b>Description</b>	<b>View from</b>	<b>Scale (s)</b>	<b>Date</b>	<b>Originating person</b>	<b>Originating organisation</b>	<b>Plate</b>
G2479_141	Glan Yr Afon	Building Recording	Cobbled floor remains in Loose box in G01 Stables	W	1x1m	10/08/2017	Spencer Smith	Gwynedd Archaeological Trust	29
G2479_142	Glan Yr Afon	Building Recording	Stall 04 in G01 Stables	E	-	10/08/2017	Spencer Smith	Gwynedd Archaeological Trust	
G2479_143	Glan Yr Afon	Building Recording	Stall 04 in G01 Stables	E	1x1m	10/08/2017	Spencer Smith	Gwynedd Archaeological Trust	
G2479_144	Glan Yr Afon	Building Recording	Stall 04 in G01 Stables - Detail of manger and trough	E	1x1m	10/08/2017	Spencer Smith	Gwynedd Archaeological Trust	
G2479_145	Glan Yr Afon	Building Recording	Stall 04 in G01 Stables - Detail of wall and manger	E	-	10/08/2017	Spencer Smith	Gwynedd Archaeological Trust	
G2479_146	Glan Yr Afon	Building Recording	Internal elevation of East wall of G01 Stables from Stall 04	W	-	10/08/2017	Spencer Smith	Gwynedd Archaeological Trust	
G2479_147	Glan Yr Afon	Building Recording	Stall 06 in G01 Stables	E	-	10/08/2017	Spencer Smith	Gwynedd Archaeological Trust	
G2479_148	Glan Yr Afon	Building Recording	Stall 06 in G01 Stables	E	1x1m	10/08/2017	Spencer Smith	Gwynedd Archaeological Trust	
G2479_149	Glan Yr Afon	Building Recording	Stall 06 in G01 Stables - Detail of manger and trough	E	1x1m	10/08/2017	Spencer Smith	Gwynedd Archaeological Trust	
G2479_150	Glan Yr Afon	Building Recording	Stall 06 in G01 Stables - Detail of wall and manger	E	-	10/08/2017	Spencer Smith	Gwynedd Archaeological Trust	

<b>File reference</b>	<b>Project name</b>	<b>Activity</b>	<b>Description</b>	<b>View from</b>	<b>Scale (s)</b>	<b>Date</b>	<b>Originating person</b>	<b>Originating organisation</b>	<b>Plate</b>
G2479_151	Glan Yr Afon	Building Recording	Roof	W	-	10/08/2017	Spencer Smith	Gwynedd Archaeological Trust	
G2479_152	Glan Yr Afon	Building Recording	Roof	E	-	10/08/2017	Spencer Smith	Gwynedd Archaeological Trust	
G2479_153	Glan Yr Afon	Building Recording	Internal elevation of East wall of G01 Stables from Stall 06	E	1x1m	10/08/2017	Spencer Smith	Gwynedd Archaeological Trust	
G2479_154	Glan Yr Afon	Building Recording	Stall 05 in G01 Stables	E	1x1m	10/08/2017	Spencer Smith	Gwynedd Archaeological Trust	
G2479_155	Glan Yr Afon	Building Recording	Stall 05 in G01 Stables	E	-	10/08/2017	Spencer Smith	Gwynedd Archaeological Trust	21
G2479_156	Glan Yr Afon	Building Recording	Stall 05 in G01 Stables - Detail of manger and trough	W	-	10/08/2017	Spencer Smith	Gwynedd Archaeological Trust	
G2479_157	Glan Yr Afon	Building Recording	Stall 05 in G01 Stables - Detail of wall and manger			10/08/2017	Spencer Smith	Gwynedd Archaeological Trust	
G2479_158	Glan Yr Afon	Building Recording	Internal elevation of East wall of G01 Stables from Stall 05			10/08/2017	Spencer Smith	Gwynedd Archaeological Trust	
G2479_159	Glan Yr Afon	Building Recording	Partition	NE	-	10/08/2017	Spencer Smith	Gwynedd Archaeological Trust	
G2479_160	Glan Yr Afon	Building Recording	G01 Stables	N	1x1m	10/08/2017	Spencer Smith	Gwynedd Archaeological Trust	

<b>File reference</b>	<b>Project name</b>	<b>Activity</b>	<b>Description</b>	<b>View from</b>	<b>Scale (s)</b>	<b>Date</b>	<b>Originating person</b>	<b>Originating organisation</b>	<b>Plate</b>
G2479_161	Glan Yr Afon	Building Recording	Loose box door of G01 Stables from Stall 06	W	-	10/08/2017	Spencer Smith	Gwynedd Archaeological Trust	
G2479_162	Glan Yr Afon	Building Recording	G01 Stables	S	1x1m	10/08/2017	Spencer Smith	Gwynedd Archaeological Trust	
G2479_163	Glan Yr Afon	Building Recording	Partition			10/08/2017	Spencer Smith	Gwynedd Archaeological Trust	
G2479_164	Glan Yr Afon	Building Recording	Partitions			10/08/2017	Spencer Smith	Gwynedd Archaeological Trust	
G2479_165	Glan Yr Afon	Building Recording	Partitions			10/08/2017	Spencer Smith	Gwynedd Archaeological Trust	
G2479_166	Glan Yr Afon	Building Recording	Partitions			10/08/2017	Spencer Smith	Gwynedd Archaeological Trust	
G2479_167	Glan Yr Afon	Building Recording	Partitions			10/08/2017	Spencer Smith	Gwynedd Archaeological Trust	
G2479_168	Glan Yr Afon	Building Recording	Partitions and Loose box Door			10/08/2017	Spencer Smith	Gwynedd Archaeological Trust	
G2479_169	Glan Yr Afon	Building Recording	Partitions			10/08/2017	Spencer Smith	Gwynedd Archaeological Trust	
G2479_170	Glan Yr Afon	Building Recording	Partitions			10/08/2017	Spencer Smith	Gwynedd Archaeological Trust	

<b>File reference</b>	<b>Project name</b>	<b>Activity</b>	<b>Description</b>	<b>View from</b>	<b>Scale (s)</b>	<b>Date</b>	<b>Originating person</b>	<b>Originating organisation</b>	<b>Plate</b>
G2479_171	Glan Yr Afon	Building Recording	Partitions			10/08/2017	Spencer Smith	Gwynedd Archaeological Trust	
G2479_172	Glan Yr Afon	Building Recording	Partitions			10/08/2017	Spencer Smith	Gwynedd Archaeological Trust	
G2479_173	Glan Yr Afon	Building Recording	Partitions			10/08/2017	Spencer Smith	Gwynedd Archaeological Trust	
G2479_174	Glan Yr Afon	Building Recording	Roof			10/08/2017	Spencer Smith	Gwynedd Archaeological Trust	
G2479_175	Glan Yr Afon	Building Recording	Roof			10/08/2017	Spencer Smith	Gwynedd Archaeological Trust	
G2479_176	Glan Yr Afon	Building Recording	Roof			10/08/2017	Spencer Smith	Gwynedd Archaeological Trust	25
G2479_177	Glan Yr Afon	Building Recording	Roof			10/08/2017	Spencer Smith	Gwynedd Archaeological Trust	27
G2479_178	Glan Yr Afon	Building Recording	Roof			10/08/2017	Spencer Smith	Gwynedd Archaeological Trust	
G2479_179	Glan Yr Afon	Building Recording	Roof			10/08/2017	Spencer Smith	Gwynedd Archaeological Trust	
G2479_180	Glan Yr Afon	Building Recording	Roof			10/08/2017	Spencer Smith	Gwynedd Archaeological Trust	26

<b>File reference</b>	<b>Project name</b>	<b>Activity</b>	<b>Description</b>	<b>View from</b>	<b>Scale (s)</b>	<b>Date</b>	<b>Originating person</b>	<b>Originating organisation</b>	<b>Plate</b>
G2479_181	Glan Yr Afon	Building Recording	Roof			10/08/2017	Spencer Smith	Gwynedd Archaeological Trust	
G2479_182	Glan Yr Afon	Building Recording	Roof			10/08/2017	Spencer Smith	Gwynedd Archaeological Trust	
G2479_183	Glan Yr Afon	Building Recording	Roof			10/08/2017	Spencer Smith	Gwynedd Archaeological Trust	
G2479_184	Glan Yr Afon	Building Recording	Roof			10/08/2017	Spencer Smith	Gwynedd Archaeological Trust	
G2479_185	Glan Yr Afon	Building Recording	Roof			10/08/2017	Spencer Smith	Gwynedd Archaeological Trust	
G2479_186	Glan Yr Afon	Building Recording	G01 Stables			10/08/2017	Spencer Smith	Gwynedd Archaeological Trust	
G2479_187	Glan Yr Afon	Building Recording	G01 Stables			10/08/2017	Spencer Smith	Gwynedd Archaeological Trust	
G2479_188	Glan Yr Afon	Building Recording	G01 Stables			10/08/2017	Spencer Smith	Gwynedd Archaeological Trust	
G2479_189	Glan Yr Afon	Building Recording	Fireplace Lintel			10/08/2017	Spencer Smith	Gwynedd Archaeological Trust	19
G2479_190	Glan Yr Afon	Building Recording	Stairs up to Hayloft F01 from Stables G01	S	-	10/08/2017	Spencer Smith	Gwynedd Archaeological Trust	

<b>File reference</b>	<b>Project name</b>	<b>Activity</b>	<b>Description</b>	<b>View from</b>	<b>Scale (s)</b>	<b>Date</b>	<b>Originating person</b>	<b>Originating organisation</b>	<b>Plate</b>
G2479_191	Glan Yr Afon	Building Recording	Stairs up to Hayloft F01 from Stables G01	N	-	10/08/2017	Spencer Smith	Gwynedd Archaeological Trust	24
G2479_192	Glan Yr Afon	Building Recording	Door in G01 Stables with chamfered limestone quoin	SW	1x1m	10/08/2017	Spencer Smith	Gwynedd Archaeological Trust	
G2479_193	Glan Yr Afon	Building Recording	Door in G01 Stables with chamfered limestone quoin	SW	-	10/08/2017	Spencer Smith	Gwynedd Archaeological Trust	
G2479_194	Glan Yr Afon	Watching Brief	Lifting of Cobbles in NW corner of G04 Cart Shed	E	-	10/08/2017	Spencer Smith	Gwynedd Archaeological Trust	
G2479_195	Glan Yr Afon	Watching Brief	Lifting of Cobbles in NW corner of G04 Cart Shed	E	-	10/08/2017	Spencer Smith	Gwynedd Archaeological Trust	
G2479_196	Glan Yr Afon	Watching Brief	Lifting of Cobbles in NW corner of G04 Cart Shed	E	1x1m	10/08/2017	Spencer Smith	Gwynedd Archaeological Trust	66
G2479_197	Glan Yr Afon	Watching Brief	Lifting of Cobbles in NW corner of G04 Cart Shed	E	1x1m	10/08/2017	Spencer Smith	Gwynedd Archaeological Trust	
G2479_198	Glan Yr Afon	Watching Brief	Cobbles lifted on N side of G04 Cart Shed showing depth of bedding gravel	S	-	10/08/2017	Spencer Smith	Gwynedd Archaeological Trust	67
G2479_199	Glan Yr Afon	Watching Brief	Lifting of Cobbles on S side of G04 Cart Shed	N	1x1m	10/08/2017	Spencer Smith	Gwynedd Archaeological Trust	
G2479_200	Glan Yr Afon	Watching Brief	Cobbles lifted on S side of G04 Cart Shed showing depth of bedding gravel	N	1x1m	10/08/2017	Spencer Smith	Gwynedd Archaeological Trust	



<b>File reference</b>	<b>Project name</b>	<b>Activity</b>	<b>Description</b>	<b>View from</b>	<b>Scale (s)</b>	<b>Date</b>	<b>Originating person</b>	<b>Originating organisation</b>	<b>Plate</b>
G2479_201	Glan Yr Afon	Watching Brief	Cobbles lifted on S side of G04 Cart Shed showing depth of bedding gravel	N	1x1m	10/08/2017	Spencer Smith	Gwynedd Archaeological Trust	68
G2479_202	Glan Yr Afon	Watching Brief	Bottle recovered from between cobbles and base of S external wall of G01 Stables	-	-	10/08/2017	Spencer Smith	Gwynedd Archaeological Trust	
G2479_203	Glan Yr Afon	Watching Brief	Lifting of Cobbles in NE corner of G04 Cart Shed	W	-	10/08/2017	Spencer Smith	Gwynedd Archaeological Trust	
G2479_204	Glan Yr Afon	Watching Brief	Lifting of Cobbles in NE corner of G04 Cart Shed	W	-	10/08/2017	Spencer Smith	Gwynedd Archaeological Trust	
G2479_205	Glan Yr Afon	Watching Brief	Lifting of Cobbles in SE corner of G04 Cart Shed	W	-	10/08/2017	Spencer Smith	Gwynedd Archaeological Trust	
G2479_206	Glan Yr Afon	Watching Brief	Lifting of Cobbles in SE corner of G04 Cart Shed	NW	-	10/08/2017	Spencer Smith	Gwynedd Archaeological Trust	
G2479_207	Glan Yr Afon	Watching Brief	Lifting of Cobbles in G04 Cart Shed	NW	-	10/08/2017	Spencer Smith	Gwynedd Archaeological Trust	
G2479_208	Glan Yr Afon	Watching Brief	Cobbles lifted on N side of G04 Cart Shed showing base of wall of G04 Cart Shed	S	1x1m	10/08/2017	Spencer Smith	Gwynedd Archaeological Trust	
G2479_209	Glan Yr Afon	Watching Brief	Cobbles lifted on N side of G04 Cart Shed showing base of wall of G04 Cart Shed	S	1x1m	10/08/2017	Spencer Smith	Gwynedd Archaeological Trust	69
G2479_210	Glan Yr Afon	Watching Brief	Cobbles lifted on N side of G04 Cart Shed showing base of wall of G04 Cart Shed	SW	1x1m	10/08/2017	Spencer Smith	Gwynedd Archaeological Trust	

<b>File reference</b>	<b>Project name</b>	<b>Activity</b>	<b>Description</b>	<b>View from</b>	<b>Scale (s)</b>	<b>Date</b>	<b>Originating person</b>	<b>Originating organisation</b>	<b>Plate</b>
G2479_211	Glan Yr Afon	Watching Brief	Cobbles lifted on N side of G04 Cart Shed	W	1x1m	10/08/2017	Spencer Smith	Gwynedd Archaeological Trust	
G2479_212	Glan Yr Afon	Watching Brief	Lifting of Cobbles in SE corner of G04 Cart Shed	NW	-	10/08/2017	Spencer Smith	Gwynedd Archaeological Trust	
G2479_213	Glan Yr Afon	Watching Brief	Lifting of Cobbles in SE corner of G04 Cart Shed	NW	-	10/08/2017	Spencer Smith	Gwynedd Archaeological Trust	
G2479_214	Glan Yr Afon	Watching Brief	Cobbles lifted on S side of G04 Cart Shed showing depth of bedding gravel	NE	-	10/08/2017	Spencer Smith	Gwynedd Archaeological Trust	
G2479_215	Glan Yr Afon	Watching Brief	Cobbles lifted on N side of G04 Cart Shed showing depth of bedding gravel	SW	1x1m	10/08/2017	Spencer Smith	Gwynedd Archaeological Trust	
G2479_216	Glan Yr Afon	Watching Brief	Lifting of Cobbles in SE corner of G04 Cart Shed	W	-	10/08/2017	Spencer Smith	Gwynedd Archaeological Trust	
G2479_217	Glan Yr Afon	Watching Brief	Cobbles lifted on S side of G04 Cart Shed showing base of wall of G04 Cart Shed	NW	-	10/08/2017	Spencer Smith	Gwynedd Archaeological Trust	71
G2479_218	Glan Yr Afon	Watching Brief	Cobbles lifted in G04 Cart Shed showing base of pillar of G04 Cart Shed	SW	1x1m	10/08/2017	Spencer Smith	Gwynedd Archaeological Trust	70
G2479_219	Glan Yr Afon	Watching Brief	Cobbles lifted within G04 Cart Shed showing depth of bedding gravel			10/08/2017	Spencer Smith	Gwynedd Archaeological Trust	



Gwynedd Archaeological Trust  
Ymddiriedolaeth Archaeolegol Gwynedd

Craig Beuno, Ffordd y Garth, Bangor, Gwynedd. LL57 2RT  
Ffon: 01248 352535. Ffacs: 01248 370925. email: [gat@heneb.co.uk](mailto:gat@heneb.co.uk)

