

MV “KING EDGAR”

LOST 2 MARCH 1945

PROJECT OVERVIEW

The Nautilus Group (**Nautilus**) is the research arm of a joint venture aimed at salvaging the cargoes of sunken World War 1 and World War 2 cargo ships.

Nautilus holds a research database of potential targets, and within the group, different teams handle database management, target due diligence, licensing, legal and commercial matters on behalf of CORAL, making Nautilus an all-inclusive research outfit.

The Nautilus Group is in a joint venture with Ardent, a company recently formed of the merger of Svitzer Salvage BV and Titan Salvage. Ardent is a global marine network, offering services in risk mitigation, emergency response, wreck removal, offshore decommissioning and underwater services. Put simply, the business of marine salvage has never before had such an experienced, comprehensive and well-equipped partner.

Contents

HISTORY

3

HISTORY

The King Edgar was a cargo ship weighing 4536 gross tons. It was built by Harland & Wolff in 1927 for Philipps, Philipps & Co - King Line, who owned it at the date of sinking.

The King Edgar was one of 40 ships built by Harland & Wolff in 1927, of which 11 were cargo ships. It was powered by a diesel engine powering a single shaft and single screw. Harland & Wolff had a huge output and from the turn of the last century were regularly making in excess of 100,000 gross tons of ships every year. During the Second World War, 169 Harland & Wolff ships were sunk, 106 of which were cargo ships.

King Line was founded in 1899. It lost a total of 12 ships during Second World War, all of which were cargo ships. Of these, 5 were built by Harland & Wolff, (King Edwin, King John, King Lud and King Malcolm being the other 4). Between 1925 and 1958, Harland & Wolff built a total of 17 ships for King Line, all of them cargo ships.

The King Edgar was on route from Victoria (British Columbia) and Halifax, Canada to Swansea Bay and London sailing in convoy SC-167 when, on 2 March 1945, it was torpedoed by German submarine U-1302, which was commanded by Wolfgang Herwartz. 2 crewmembers and 2 gunners were lost and the master, 32 crew and 9 gunners that survived were picked up by HMS Nyasaland and landed at Milton Haven. The King Edgar was taken in tow but sank later. The Norfolk Coast was also sunk in the same attack and the U-boat that carried out the attack was itself sunk 5 days later in the St George's Channel by depth charges. All 48 aboard were lost.

The King Edgar was carrying a cargo of 1667 standard lumber logs, 2038 tons of plywood, 250 tons of lead and 250 tons of zinc spelter. The metals are both non-ferrous and as such will survive today with fairly minimal corrosion and are the focus of our salvage operation. Precise details of how we plan on removing the cargo will follow in the section on methodology.

The precise location of the wreck is known as it was located by the HMS Bulldog on 13 June 1980. HMS Bulldog located the King Edgar at 51°53,124'N 05°35,928'W (the **Work Site**) using HI-FIX Parabolic scanning, which has an accuracy of 25m. A salvage contract was initially handed to Risdon Beazley in 1971, although he never actually salvaged the wreck and to our knowledge the wreck has not been salvaged since.

The King Edgar is not a protected wreck under sections 1 or 2 of the Protection of Wrecks Act 1973, or the Protection of Military Remains Act 1986. Further, it is not protected under the UNESCO Convention on the Protection of the Underwater Cultural Heritage.

QUICK REFERENCE CHART

Ship Name	MV King Edgar
Date Built	1927
Date of Sinking	1945
Owner at Time of Sinking	Philipps, Philipps & Co - King Line
Ship Type	Cargo
Ship Weight	4536 gross tons
Engine Type	Diesel, single shaft, single screw
Journey when Sunk	Canada to Swansea and London
Lives Lost	4
Cargo	Zinc spelter, lead, lumber logs and ply wood
Location	51°53,124'N 05°35,928'W
Number of Ships Built by H&W in 1927	40
Number of Cargo Ships Built by H&W in 1927	11
Number of H&W Ships Lost in WWII	169
Number of H&W Cargo Ships Lost in WWII	106
Number of Ships Lost by King Line in WWII	12
Number of H&W Ships Owned by King Line	17
Number of H&W Ships Lost by King Line in WWII	5

SUPPORTING DOCUMENTS

The following supporting documents for all the above information can be found in Appendix 1:

1. List of ships built by H&W in 1927 (pages 12-13);
2. List of H&W ships owned by King Line (page 13);
3. List of H&W ships lost (pages 14-31);
4. Protection of Military Remains Act 1986 (pages 32-37)
5. Protection of Wrecks Act 1973, sections 1 and 2 (pages 38-46);
6. Screenshot of wrecksite.eu information (page 47); and
7. Screenshot of uboat.net information (page 48).

APPENDIX 1 – HISTORICAL DOCUMENTS

List of Ships Built by Harland and Wolff Ltd in 1927.

This list is part of a comprehensive list of all ships built by Harland and Wolff found on Wikipedia at

https://en.wikipedia.org/wiki/List_of_ships_built_by_Harland_and_Wolff#1920s,

which itself cites the following references:

1. Passenger lists and Emigrant ships from Norway-Heritage – Shipyard: Harland & Wolff
2. Experience of a UK Shipyard in the 1990s Offshore Market, J. MacGregor, RINA, W272, 2001
3. Dunn, Lawrence (1964). Famous Liners of the Past Belfast Built. London: Adlard Coles.
4. McCluskie, Tom (2013). The Rise and Fall of Harland and Wolff. Stroud: The History Press. ISBN 978 0 7524 8861 5.
5. Moss, Michael; Hume, John R (1986). Shipbuilders to the World. Belfast: Blackstaff Press. pp. 507–565. ISBN 0 85640 343 1.

Cargo ships have been highlighted.

- **MV Apapa**, passenger ship for Elder Dempster, launched 26 August 1926, completed 28 January 1927, bombed and sunk 15 November 1940
- **RMS Alcantara**, passenger ship for Royal Mail Line, launched 1927, completed 18 February 1927, scrapped 1958
- **SS Sin Kheng Seng**, coaster for McKie & Baxter Ltd, completed 2 April 1927
- **SS Encina**, lighter for Argentine Navigation Co, completed 9 May 1927
- **SS Enea**, lighter for Argentine Navigation Co, completed 24 May 1927
- **SS Paua**, oil tanker for Nederland Stoomboot Co, completed 9 June 1927
- **SS Lagunilla**, oil tanker for Lago Shipping Co, completed 16 June 1927
- **SS Icotea**, oil tanker for Lago Shipping Co, completed 17 June 1927
- **SS La Salina**, oil tanker for Lago Shipping Co, completed 28 June 1927
- **SS Minmi**, coaster for J&A Brown Ltd, completed 30 June 1927
- **SS Erata**, lighter for Argentine Navigation Co, completed 5 July 1927
- **SS Erica**, lighter for Argentine Navigation Co, completed 5 July 1927
- **La Falaise**, yacht for Mr James Allen, completed 13 July 1927
- **SS Berta**, oil tanker for Anglo Saxon Petroleum Co, completed 14 July 1927
- **London Mammoth**, crane pontoon for the Port of London Authority, completed 16 July 1927
- **SS San Carlos**, oil tanker for Lago Shipping Co, completed 29 July 1927
- **SS Grantleyhall**, cargo ship for West Hartlepool Steamship Co, completed 16 August 1927
- **SS Dunkwa**, cargo ship for Elder Dempster, completed 24 August 1927
- **SS Brigida**, oil tanker for Anglo Saxon Petroleum Co, completed 30 August 1927
- **SS Agatha**, oil tanker for Nederland Stoomboot Co, completed 8 September 1927
- **SS Eddystone**, coaster for Clyde Shipping Co, completed 15 September 1927
- **SS Oranjestad**, oil tanker for Bank Line, completed 23 September 1927
- **SS Sabaneta**, oil tanker for Bank Line, completed 30 September 1927

- **SS Petronella**, oil tanker for Nederland Stoomboot Co, completed 11 October 1927
- **SS Lahji**, tug for P&O, completed 16 October 1927
- **SS Palacio**, cargo ship for MacAndrews & Co, completed 19 October 1927
- **SS Dixcove**, cargo ship for Elder Dempster, completed 21 October 1927
- **SS Kheti**, cargo ship for James Moss Ltd, completed 25 October 1927
- **SS Laurentic**, passenger ship for White Star Line, launched 16 June 1927, completed 1 November 1927, maiden voyage 12 November 1927, torpedoed and sunk 3 November 1940
- **SS Uganda**, cargo ship for MacLay & MacIntyre Ltd, completed 4 November 1927
- **SS Paula**, oil tanker for Nederland Stoomboot Co, completed 22 November 1927
- **SS Zahra**, oil tanker for Vacuum Oil Co, completed 22 November 1927
- **SS Iguazu**, passenger ship for Argentine Navigation Co, 26 November 1927
- **Sefwi**, barge for Elder Dempster, completed 29 November 1927
- **Wala**, barge for Elder Dempster, completed 29 November 1927
- **SS King Edgar**, cargo ship for King Line, completed 30 November 1927
- **SS Pelayo**, cargo ship for MacAndrews & Co, completed 1 December 1927
- **SS Daru**, cargo ship for Elder Dempster, completed 20 December 1927
- **SS King Edwin**, cargo ship for King Line, completed 20 December 1927
- **SS Pacheco**, cargo ship for MacAndrews & Co, completed 22 December 1927

List of Harland and Wolff ships built for the King Line (picked from the same Wikipedia article)

- **SS King James**, cargo ship for King Line, completed 28 November 1925
- **SS King Malcolm**, cargo ship for King Line, completed 29 December 1925
- **SS King Edgar**, cargo ship for King Line, completed 30 November 1927
- **SS King Edwin**, cargo ship for King Line, completed 20 December 1927
- **SS King Egbert**, cargo ship for King Line, completed 17 January 1928
- **SS King John**, cargo ship for King Line, completed 16 February 1928
- **SS King Lud**, cargo ship for King Line, completed 15 March 1928
- **SS King Neptune**, cargo ship for King Line, completed 17 April 1928
- **SS King Arthur**, cargo ship for King Line, completed 17 May 1928
- **SS King William**, cargo ship for King Line, completed 19 May 1928
- **SS King Stephen**, cargo ship for King Line, completed 14 June 1928
- **SS King Malcolm**, cargo ship for King Line, completed 29 February 1952
- **SS King Alexander**, cargo ship for King Line, completed 6 May 1952
- **SS King Arthur**, cargo ship for King Line, completed 19 March 1953
- **SS King Charles**, cargo ship for King Line, completed 25 June 1957
- **SS King George**, cargo ship for King Line, completed 19 December 1957
- **SS King Henry**, cargo ship for King Line, completed 5 December 1958

The following are screen shots from the comprehensive shipwreck website Wrecksite.eu, listing all Harland and Wolff ships that have ever been lost alphabetically, including those in the World Wars.



Ships lost show prev. names show pos. builder engine builder

417 results sorted by: Name

Name	Rep	Media	Nationality	Type	Propulsion	Cause Lost	Year ^o	Year ^t	†	No.	Weight	Latitude	Longitude
Abosso SS (I) (+1917)			british	cargo ship	steam	torpedo	1912	1917	65	430	7782	51°58,473'N	14°20,905'W
Aburi SS (+1917)			british	cargo ship	steam	torpedo	1906	1917	25	383	3730	56°15'N	11°30'W
Accra II MV (+1940)			british	ocean liner	motor vessel (diesel)	torpedo	1926	1940	24	9337	55°40'N	16°28'W	
Ada MV (+1941)			british	ocean liner	motor vessel (diesel)	torpedo	1922	1941	12	7816	08°30'N	14°39'W	
Adrias SS (+1951)			greek	passenger ship	steam	ran aground (wrecked)	1893	1951	271	2082	36°49,93'N	23°53,96'E	
Afric SS (+1917)			british	passenger ship	steam	gunfire - shelled	1899	1917	23	322	11948	50°01,105'N	04°33,005'W
Alarm HMS (J-140) (+1943)			british	minesweeper	motor vessel (diesel)	air raid	1941	1943		850			
Alcantara RMS (+1916)			british	cruiser (auxiliary)	steam	gunfire - shelled	1914	1916	72	435	15831	61°48'N	01°40'E
Alegrete SS (I) (+1942)			brazilian	cargo ship	steam	torpedo	1906	1942	0	380	5970	13°40'N	61°30'W
Alessandria SS (+1917)			italian	cargo ship	steam	torpedo	1911	1917		8006	33°46,667'N	20°03,267'E	
Alfred Jones MV (+1941)			british	cargo ship	motor vessel (diesel)	torpedo	1930	1941	2	868	4022	08°00'N	15°00'W
Algerine (J 213) HMS (+1942)			british	minesweeper	motor vessel (diesel)	torpedo	1941	1942		850	36°51,43'N	05°07,94'E	
Almazora RMS			british	ocean liner	steam		1914			15551			
Almedia SV (+1905)			norwegian	barque - bark	sailing ship	foundered	1866	1905	45	1477			
Alstermixe SV (+1906)			german	barque - bark	sailing ship	missing	1892	1906	30	262	3043		
Alynbank MV (+1944)			british	cargo ship	motor vessel (diesel)	scuttled	1925	1944		5151	49°21,232'N	00°36,963'W	
Amazon RMS (+1918)			british	cargo ship	steam	torpedo	1906	1918		10037	55°46,252'N	08°11,366'W	
Amov MV (+1972)			somalian	cargo ship	motor vessel (diesel)	ran aground (wrecked)	1952	1972	1449	5895	16°10'N	94°15'E	
Anadara MV (+1942)			british	tanker	motor vessel (diesel)	torpedo	1935	1942	62	932	8009	43°57'N	44°45'W
Andreas SS (+1942)			greek	cargo ship	steam	torpedo	1919	1942	10	557	6566	02°00'S	30°30'W
Aneroid SS (+1942)			american	cargo ship	steam	torpedo	1917	1942	6	4976	08°24'N	59°12'W	
Angarstroi SS (Angarstrov) (+1942)			russian	cargo ship	steam	torpedo	1927	1942	647	4761	32°00'N	128°25'E	
Apapa MV (II) (+1940)			british	passenger ship	motor vessel (diesel)	air raid	1927	1940	24	9333	54°34'N	16°47'W	
Apapa SS (II) (+1917)			british	ocean liner	steam	torpedo	1914	1917	77	443	7832	53°27,864'N	04°25,021'W
Anabic SS (II) (+1915)			british	ocean liner	steam	torpedo	1903	1915	44	340	15801	50°56,391'N	08°29,211'W
Araby MV (+1940)			british	cargo ship	motor vessel (diesel)	mine	1923	1940	6	630	4936	51°29,182'N	00°49,532'E
Aragon RMS (+1917)			british	ocean liner	steam	torpedo	1905	1917	610	9588	31°20,000'N	29°48,634'E	

Araybank MV (+1941)		british	cargo ship	(diesel)	air raid	1940	1941	1034	7258										
Argonaut 7 SS (+1918)		american	passenger/cargo ship	steam	torpedo	1893	1918	264	4826	49°08,569'N	04°17,306'W								
Argonaut SS (+1918)		american	ocean liner	steam	torpedo	1893	1918	0	264	49°12'N	06°45'W								
Armenian SS (+1915)		british	ocean liner	steam	torpedo	1895	1915	29	292	8825	50°45,448'N	06°03,158'W							
Ashkhabad SS (+1942)		russian	cargo ship	steam	torpedo	1917	1942	0	525	5284	34°22,840'N	76°21,928'W							
Asia SS (+1911)		american	cargo ship	steam	ran aground (wrecked)	1883	1911	153	4680										
Asmara 7 SS (+1943)		italian	cargo ship	steam	torpedo	1915	1943	673	7192	40°39,442'N	18°03,262'E								
Assaye SS (+1897)		british	cargo ship	steam	ran aground (wrecked)	1891	1897	0	239	5129	43°20,533'N	65°59,117'W							
Astra MV (+1974)		british	fishing ship	motor vessel (diesel)	collision	1947	1974	1			11°56,415'N	17°17,075'W							
Atlantic RMS (+1873)		british	passenger ship	steam	ran aground (wrecked)	1870	1873	585	74	3707	44°26,52'N	63°43,93'W							
Auckland Star MV (+1940)		british	cargo ship	steam	motor vessel (diesel)	1939	1940			12382	52°16,999'N	12°34,000'W							
Avon River SS (+1936)		british	cargo ship	steam	ran aground (wrecked)	1918	1936	528	5286	62°06'N	80°18'W								
Baltara (+1929)		british	cargo ship	steam	ran aground (wrecked)	1909	1929	405	2379	54°21,733'N	18°57,500'E								
Bansel Maru No.2 (+1918)		japanese	cargo ship	steam	missing	1879	1918	123	1677										
Bay of Panama SV (+1891)		british	barque - bark	steam	sailing ship	1883	1891	22	164	2365	50°04,756'N	05°04,594'W							
Bay State SS (+1899)		british	cargo ship	steam	ran aground (wrecked)	1898	1899	0	321	6824	43°33,304'N	70°12,969'W							
Beemsterdijk 7 SS (+1941)		dutch	cargo ship	steam	mine	1922	1941	39	290	6869	51°51,320'N	05°50,105'W							
Belgian Airman MV (+1945)		belgian	cargo ship	motor vessel (diesel)	torpedo	1942	1945	1	1093	6959	36°04,529'N	74°30,805'W							
Berwick HMS (+1986)		british	frigate	steam	sailing ship	1961	1986												
Bhutan SS (+1942)		british	cargo ship	steam	air raid	1929	1942	6	842	6104	34°00'N	23°40'E							
Bilderdijk SS (+1940)		dutch	cargo ship	steam	torpedo	1922	1940	0	487	6856	56°35'N	17°15'W							
Binnendijk SS (+1939)		dutch	cargo ship	steam	mine	1921	1939	0	131	6875	50°32,130'N	02°20,072'W							
Birchbank MV (1) (+1943)		british	cargo ship	motor vessel (diesel)	air raid	1924	1943	656	5159		36°10'N	00°06'W							

1 2 3 4 5 6 7 8 9

BELGIUM

N.V. (Naamloze Vennootschap) : = p.l.c. (UK)
 SA, S.A. (Société Anonyme): = p.l.c. (UK)

DENMARK

A/S (Aktieselskab): = p.l.c. (UK).

FRANCE

SA, S.A. (Société anonyme): = public limited company (p.l.c.) (UK)

GERMANY

AG, A.G. (Aktiengesellschaft): = p.l.c. (UK).
 GmbH, G.m.b.h. (Gesellschaft mit beschränkter Haftung): = Ltd. (UK).

ITALY

S.p.A. (Società per Azioni): = p.l.c. (UK)
 S.r.l., Srl, S.R.L. (Società a responsabilità limitata): = Ltd. (UK)

JAPAN

株式会社 (kabushiki-kaisha or kabushiki-gaisha, "K.K.") - "stock company," typical form of business corporation
 有限会社 (yūgen-kaisha or yūgen-gaisha, "Y.K.") - "limited company," a close corporation form for smaller businesses
 合資会社 (gōsai-kaisha or gōsai-gaisha, "G.K.") - "amalgamated company," a close corporation form similar to the American LLC
 合資会社 (gōshi-kaisha or gōshi-gaisha, "GSK") - corporation similar to a limited partnership
 合名会社 (gōmei-kaisha or gōmei-gaisha, "GMK") - corporation similar to a general partnership

NETHERLANDS

N.V. (Naamloze Vennootschap): = p.l.c. (UK). The name means "nameless company".
 B.V. (Besloten Vennootschap): = Ltd. (UK). The name means "secluded company".

NORWAY

AS, A/S (Aksjeselskap): = Ltd. (UK).

PORTUGAL

Lda. (Limitada): = Ltd. (UK)
 S.A. (Sociedade Anónima): = p.l.c. (UK),

SPAIN

S.A. (Sociedad Anónima): = p.l.c. (UK).

SWEDEN

AB, A/B (Aktiebolag): = Ltd. (UK).

[more info on company entities](#)

copyright © 2001-2016 [The Wrecksite](#) sitemap

✚ Gustave Zédé (Grel...
✚ Gustave Zédé (A759...



copyrights: [Unknown - onbekend - inconnu](#)
ref. used: [Lloyd's of London, Lloyd's Register of Shipping](#)

[Chlochase Nick](#) 21/08/2010 [EN]

 [Company built ships 1926](#)

copyrights: [Unknown - onbekend - inconnu](#)
ref. used: [Lloyd's of London, Lloyd's Register of Shipping](#)
[insert new document](#)

Ships lost show prev. names show pos. builder engine builder

417 results sorted by: [Name](#)

1 2 3 4 5 6 7 8 9

Name	Rep	Media	Nationality	Type	Propulsion	Cause Lost	Year ^o	Year ^t	†	No.	Weight	Latitude	Longitude
Black Head SS (+1912)			british	cargo ship	steam	ran aground (wrecked)	1881	1912		136	1173		
Boardsdale RFA (+1940)			british	tanker	motor vessel (diesel)	ran aground (wrecked)	1937	1940	0	971	8334	68°42,0'N	14°20,9'E
Bohemian SS (+1881)			british	cargo ship	steam	ran aground (wrecked)	1870	1881	35	71	3113	51°27,229'N	09°49,079'W
Boma SS (11) (+1940)			british	cargo ship	steam	torpedo	1920	1940	3	561	5408	55°43,24'N	07°51,36'W
Bonheur SS (+1940)			british	cargo ship	steam turbine	torpedo	1920	1940		547	5327	57°09,982'N	08°36,043'W
Boschdijk SS (+1942)			dutch	cargo ship	steam	used as a target	1922	1942		132	6876		
Boyne SV (+1873)			british	barque - bark	sailing ship	ran aground (wrecked)	1865	1873	40	615	50°00,452'N	05°15,961'W	
Brecknockshire SS (+1917)			british	cargo ship	steam	scuttled	1916	1917		453	8423	21°17,833'S	33°21,417'W
Breedijk SS (+1942)			dutch	cargo ship	steam turbine	torpedo	1922	1942	2	118	6861	05°05'S	08°54'W
Breton SS (+1917)			french	cargo ship	steam	mine	1886	1917	0	185	3739	37°30'N	09°19'E
Britannic HMHS (+1916)			british	ocean liner	steam	mine	1914	1916	30	433	48158	37°42,083'N	24°17,033'E
British Peer SV (+1896)			british	fully rigged ship	sailing ship	ran aground (wrecked)	1865	1896	19	32	1478	33°30,4'S	18°18,7'E
British Security MV (+1941)			british	tanker	motor vessel (diesel)	torpedo	1937	1941	53	974	8470	57°14'N	39°23'W
British Trust MV (+1943)			british	tanker	motor vessel (diesel)	torpedo	1939	1943	10	1011	8466	32°40'N	19°53'E
British Vigilance MV (+1943)			british	tanker	motor vessel (diesel)	torpedo	1942	1943		1116	8093	20°58'N	44°40'W
Brittany MV (+1942)			british	cargo ship	motor vessel (diesel)	torpedo	1928	1942	14	499	4772	33°29'N	18°32'W
Buccaneer MV (+1942)			norwegian	tanker	motor vessel (diesel)	gunfire - shelled	1927	1942		141	6222		
Burgerdijk SS (+1940)			dutch	cargo ship	steam	torpedo	1921	1940	0	483	6853	49°38,887'N	06°40,302'W
Byron I (+1985)			panamanian	cargo ship	motor vessel (diesel)			1985		8541	34°56,156'N	24°48,868'E	
Cairndale MV (+1941)			british	tanker	motor vessel (diesel)	torpedo	1939	1941		8129		35°19'N	08°33'W
California 7 SV (+1913)			russian	barque - bark	sailing ship	ran aground (wrecked)	1882	1913	10	150	2518	55°04,325'N	01°26,862'W
Calpean Star MV (+1960)			british	cargo ship	motor vessel (diesel)	ran aground (wrecked)	1929	1960		806	14135	34°57,369'S	56°13,776'W
Cameo MV (+1950)			british	cargo ship	motor vessel (diesel)	ran aground (wrecked)	1937	1950		979	946	52°45,869'N	05°57,559'W
Caraguet SS (+1923)			british	cargo ship	steam	ran aground (wrecked)	1894	1923		284	4890	32°27,75'N	64°49,95'W
Cedarbank MV (+1940)			british	cargo ship	motor vessel (diesel)	torpedo	1924	1940		662	5159	62°49'N	04°10'E
Cedrlington Court SS (+1940)			british	cargo ship	steam	mine	1918	1940		531	5160	51°23,056'N	01°35,708'E
Celtic SS (+1928)			british	ocean liner	steam	ran aground (wrecked)	1901	1928	0	335	21035	51°47,436'N	08°15,306'W
Ceramic SS (1) (+1942)			british	ocean liner	steam	torpedo	1913	1942	655		18713	40°30'N	40°20'W
Cestrian SS (+1917)			british	ocean liner	steam	torpedo	1896	1917	3		8912	38°43,583'N	24°44,083'E
Champagne HMS (+1917)			british	cruiser (auxiliary)	steam	torpedo	1895	1917	58		5317	54°17'N	05°10'W
Chattahoochee SS (+1918)			american	cargo ship	steam	torpedo	1911	1918	0	413	8007	49°39,637'N	05°31,258'W
Christel Vinnen SV (+1927)			italian	barque - bark	sailing ship	ran aground (wrecked)	1890	1927	225	3099		13°20,933'N	81°22,483'W
City Of Waterford SS (+1941)			irish	cargo ship	steam	collision	1879	1941		126	1071	52°06'N	21°36'W
Ciudad de Asunción MV (+1953)			argentinian	passenger ship	motor vessel (diesel)	submerged object	1930	1963	52	847	2330	34°45,892'S	57°27,430'W
Ciudad del Salto MV (+1963)			uruguayan	passenger ship	motor vessel (diesel)	ran aground (wrecked)	1928	1963	829	1922		34°22,733'S	53°46,717'W
Cobequid SS (+1914)			british	passenger ship	steam	ran aground (wrecked)	1893	1914	0	263	2960	43°59,650'N	66°18,283'W

<http://www.wrecksite.eu/ownerBuilderView.aspx?1055#&aj=z2mMeoBr4zPVq%2bX5ByI6vgKkQKcxMUqYObECKVISw%3d>

1/12/2016

WRECKSITE - Harland & Wolff Ltd. Belfast & Glasgow

Columbian SS (+1914)		british	cargo ship	steam	fire	1890	1914	18	229	5088	41°00'N	59°00'W
Conch MV (+1940)		british	tanker	motor vessel (diesel)	torpedo	1931	1940	0	909	8376	54°21'N	19°30'W
Consul Horn SS (3) (+1942)		german	cargo ship	steam	mine	1904	1942	365	8384	53°47,893'N	06°25,420'E	
Cymric SS (+1916)		british	ocean liner	steam	torpedo	1898	1916	5	316	13370	52°16,782'N	13°05,445'W
Dagomba MV (+1942)		british	cargo ship	motor vessel (diesel)	torpedo	1928	1942	7	738	3845	02°30'N	19°00'W
Daiten Maru (+1918)		japanese	ocean liner	steam	torpedo	1889	1918	0	216	4555	38°20'N	11°50'E
Daru MV (1) ? (+1941)		british	cargo ship	motor vessel (diesel)	air raid	1927	1941	0	737	3854	51°58,197'N	05°56,243'W
Defoe MV (+1942)		british	cargo ship	motor vessel (diesel)	explosion	1940	1942	1030	6245	51°00'N	18°10'W	
Delfin SS (+1937)		spanish	passenger ship	steam	air raid	1886	1937	188	1254	36°43,594'N	03°57,439'W	
Delphic SS (+1917)		british	ocean liner	steam	torpedo	1897	1917	5	309	8273	48°00,0'N	08°22,5'W
Denton Holme SV (+1890)		british	fully rigged ship	sailing ship	ran aground (wrecked)	1863	1890	20	998	31°59,400'S	115°33,517'E	
Derbyshire MV [+1980]		british	cargo - bulk carrier	motor vessel (diesel)	foundered	1976	1980	44	57	91655	25°51,667'N	133°31,875'E
Deudraeth Castle SV (+1905)		british	barque - bark	sailing ship	gale/storm	1886	1905	1766	54°00'S	57°00'W		
Devis MV (+1943)		british	cargo ship	motor vessel (diesel)	torpedo	1938	1943	52	1002	6054	37°01'N	04°10'E

BELGIUM

N.V. N.V. (Naamloze Vennootschap) : ≈ p.l.c. (UK)
SA, S.A. (Société Anonyme) : ≈ p.l.c. (UK)

DENMARK

A/S (Aktieselskab) : ≈ p.l.c. (UK).

FRANCE

SA, S.A. (Société anonyme) : ≈ public limited company (p.l.c.) (UK)

GERMANY

AG, A.G. (Aktiengesellschaft) : ≈ p.l.c. (UK).
GmbH, G.m.b.h. (Gesellschaft mit beschränkter Haftung) : ≈ Ltd. (UK).

ITALY

S.p.A. (Società per Azioni) : ≈ p.l.c. (UK)
S.r.l., Srl, S.R.L. (Società a responsabilità limitata) : ≈ Ltd. (UK)

JAPAN

株式会社 (kabushiki-kaisha or kabushiki-gaisha, "K.K.") - "stock company," typical form of business corporation
有限会社 (yūgen-kaisha or yūgen-gaisha, "Y.K.") - "limited company," a close corporation form for smaller businesses
合資会社 (gōdō-kaisha or gōdō-gaisha, "G.K.") - "amalgamated company," a close corporation form similar to the American LLC
合資会社 (gōshi-kaisha or gōshi-gaisha, "GSK") - corporation similar to a limited partnership
合名会社 (gōmei-kaisha or gōmei-gaisha, "GMK") - corporation similar to a general partnership

NETHERLANDS

N.V. (Naamloze Vennootschap) : ≈ p.l.c. (UK). The name means "nameless company".
B.V. (Besloten Vennootschap) : ≈ Ltd. (UK). The name means "secluded company".

NORWAY

AS, A/S (Aksjeselskap) : ≈ Ltd. (UK).

PORTUGAL

Lda. (Limitada) : ≈ Ltd. (UK)
S.A. (Sociedade Anónima) : ≈ p.l.c. (UK),

SPAIN

S.A. (Sociedad Anónima) : ≈ p.l.c. (UK).

SWEDEN

AB, A/B (Aktiebolag) : ≈ Ltd. (UK).

[more info on company entities](#)

copyright © 2001-2016 [The Wrecksite](#) sitemap

copyrights: Unknown - onbekend - inconnu
 ref. used: Lloyd's of London, Lloyd's Register of Shipping

Chipchase Nick 21/08/2010 [EN]
 Company built ships 1926



copyrights: Unknown - onbekend - inconnu
 ref. used: Lloyd's of London, Lloyd's Register of Shipping
 insert new document

Ships lost show prev. names show pos. builder engine builder


417 results sorted by: Name

Name	Rep	Media	Nationality	Type	Propulsion	Cause Lost	Year ¹	Year ²	±	No.	Weight	Latitude	Longitude
Devonian SS (+1917)			british	ocean liner	steam	torpedo	1900	1917	2	331	10418	55°30,158'N	08°01,863'W
Dinsdale MV (+1942)			british	tanker	motor vessel (diesel)	torpedo	1942	1942	13	8214		00°45'S	29°50'W
Dinteldyk MV (+1944)			dutch	cargo ship	motor vessel (diesel)	scuttled	1922	1944	0	515	9388		
Dipayati MV (+1948)			indian	passenger ship	motor vessel (diesel)	capsized	1936	1948		985	840		
Doggerbank MV (ex-Speybank) (+1943)			german	cargo ship	motor vessel (diesel)	torpedo	1926	1943	364	686	5159	29°10'N	34°10'W
Donax MV (+1942)			british	tanker	motor vessel (diesel)	torpedo	1938	1942	0	1008	8036	49°51'N	27°58'W
Drina SS (+1917)			british	ocean liner	steam	mine	1913	1917	15	428	11483	51°40,470'N	05°18,025'W
Dromore Castle SS (+1941)			british	cargo ship	steam	mine	1919	1941	0	539	5242	53°29,536'N	00°52,258'E
Duke of Lancaster SS (+1979)			british	passenger ship	steam turbine	abandoned	1956	1979	0	1540	4.45	53°18,383'N	03°14,133'W
Duke of York SS (bow section) (+1953)			british	passenger ship	steam	collision	1935	1953		4109		51°43,396'N	02°02,904'E
Dunbar Castle MV (+1940)			british	ocean liner	motor vessel (diesel)	mine	1930	1940	9	851	10002	51°22,668'N	01°36,253'E
Dundrum Castle SS (+1943)			british	cargo ship	steam	fire	1919	1943		572	5259	14°37'N	42°23'E
Dunvegan Castle HMS (+1940)			british	cruiser (auxiliary)	motor vessel (diesel)	torpedo	1936	1940	27	960	15007	55°05'N	11°00'W
Dvinsk SS (Dvinsk) (+1918)			british	ocean liner	steam	gunfire - shelled	1897	1918	23	312	8173	39°10'N	63°10'W
E. Evangelia MV (+1968)			greek	cargo ship	motor vessel (diesel)	ran aground (wrecked)	1942	1968		1120	7388	43°57,709'N	28°39,086'E
Eastern Saturn (+1978)			panamanian	cargo ship	motor vessel (diesel)	foundered	1955	1978		1515	7563	00°20'S	05°50'E
Edinburgh Castle SS (+1945)			british	ocean liner	steam	used as a target (wrecked)	1910	1945		410	13329	08°29,050'N	14°14,733'W
Edith SV (+1903)			german	barque - bark	sailing ship	ran aground (wrecked)	1868	1903		55	1289	20°03'S	160°27'E
Edward Blyden MV (+1941)			british	cargo ship	motor vessel (diesel)	torpedo	1930	1941	0	867	5003	27°36'N	24°29'W
Elmbank MV (+1940)			british	cargo ship	motor vessel (diesel)	torpedo	1925	1940	2	677	5156	55°20'N	22°30'W
Elpis MV (+1968)			greek	cargo ship	motor vessel (diesel)	submerged object	1941	1968		1092	878	53°35,07'N	05°57,03'E
Empire Bede MV (+1942)			british	cargo ship	motor vessel (diesel)	gunfire - shelled	1942	1942	2	6959		19°35'N	76°25'W
Empire Bittern SS (+1944)			british	cargo ship	steam	scuttled	1902	1944		349	8369	49°21,281'N	00°36,880'W
Empire Gem MV (+1942)			british	tanker	motor vessel (diesel)	torpedo	1941	1942	49	1045	8139	35°01,783'N	75°28,502'W
Empire Hope MV (+1942)			british	cargo ship	motor vessel (diesel)	air raid	1941	1942	0	1050	12668	37°34'N	10°34'E
Empire Metal MV (+1943)			british	tanker	motor vessel (diesel)	air raid	1942	1943	6	1160	8201		
Empire Progress SS (+1942)			british	cargo ship	steam	torpedo	1918	1942	12	526	5249	40°29'N	52°35'W
Empire Rowan MV (+1943)			british	cargo ship	motor vessel (diesel)	torpedo	1922	1943		516	9462		
Empire Severn SS (+1946)			british	cargo ship	steam	scuttled	1914	1946		444	6681	58°17,999'N	09°37,000'W
Empire Spenser MV (+1942)			british	tanker	motor vessel (diesel)	torpedo	1942	1942	1	1079	8194	57°04'N	36°01'W
Empire Star MV (+1942)			british	cargo ship	motor vessel (diesel)	torpedo	1935	1942	42	12656		48°14'N	26°22'W
Englishman SS (+1916)			british	passenger ship	steam	torpedo	1891	1916	10	242	5257	55°44,176'N	06°45,729'W
Estonica SS (+1913)			russian	cargo ship	steam	fire	1889	1913	6	217	4261	20°00'N	38°44'E
Etolia SS (+1906)			british	cargo ship	steam	ran aground (wrecked)	1887	1906		196	3207		
Fiji (+1891)			british	barque - bark	sailing ship	ran aground (wrecked)	1875	1891	13	95	1436	38°45,750'S	143°13,499'E
Forresbank MV (+1958)			british	cargo ship	motor vessel (diesel)	fire	1925	1958	1	678	5159	31°51'S	29°17'E
Foyiebank HMS (+1940)			british	cargo ship	motor vessel (diesel)	air raid	1930	1940	176	878	5582	50°34,309'N	02°25,228'W

http://www.wrecksite.eu/ownerBuilderView.aspx?1055#&&aj=z2mMeoBr4zPVq%2bX5ByI6vv9KdV6Pbbzy%2f3WVtAdhk%3d

copyrights: Unknown - onbekend - inconnu
 ref. used: Lloyd's of London, Lloyd's Register of Shipping

Chipchase Nick 21/08/2010 [EN]
 Company built ships 1926



copyrights: Unknown - onbekend - inconnu
 ref. used: Lloyd's of London, Lloyd's Register of Shipping
 insert new document

Ships lost show prev. names show pos. builder engine builder

417 results sorted by: Name


Name	Rep	Media	Nationality	Type	Propulsion	Cause Lost	Year*	Year†	‡	No.	Weight	Latitude	Longitude
Glorious HMS (77) [+1940]			british	aircraft carrier	steam turbine	naval battle	1917	1940	1207	482	26518	68°30'N	03°50'E
Greleen SS [+1917]			british	cargo ship	steam	torpedo	1894	1917	19	287	2286	50°27,667'N	03°13,857'W
Guayra MV [+1982]			argentinian	passenger/cargo ship	motor vessel (diesel)	fire	1930	1982	877	785	42°30,425'S	64°36,299'W	
Guvernoren SS (Ex-Imo) [+1921]			norwegian	tanker	steam	ran aground (wrecked)	1889	1921	5043	51°24,981'S	57°51,148'W		
Heinrich Schulte SS [+1944]			german	cargo ship	steam	torpedo	1918	1944	523	5188	70°08'N	28°14'E	
Hektor SS [+1942]			british	whale factory	steam	torpedo	1899	1942	1	13797	48°55'N	33°38'W	
Highland Hope MV [+1930]			british	ocean liner	motor vessel (diesel)	ran aground (wrecked)	1929	1930	1	813	14129	39°28,667'N	09°32,717'W
Highland Patriot MV [+1940]			british	ocean liner	motor vessel (diesel)	torpedo	1932	1940	3	916	14172	52°20'N	19°04'W
Hokutai Maru [+1944]			japanese	cargo ship	steam	air raid	1918	1944	532	5185	07°30'N	134°30'E	
Holmurst SS [+1885]			british	cargo ship	steam	collision	1879	1885	495	50°03,515'N	04°16,112'W		
Horn Head SS [+1893]			british	cargo ship	steam	foundered	1884	1893	30	165	2386		
Hugo Hamilton SV [+1917]			swedish	barque - bark	sail and motor	gunfire - shelled	1883	1917	156	2570	55°45'N	12°10'W	
Ibal SS [+1917]			british	cargo ship	steam	torpedo	1894	1917	0	279	5434	48°43'N	12°35'W
Ilvirian SS [+1884]			british	cargo ship	sail and steam	ran aground (wrecked)	1867	1884	0	49	2931	51°26,227'N	09°28,698'W
Imperial Star MV [+1941]			british	cargo ship	motor vessel (diesel)	air raid	1934	1941	0	933	12427	37°31'N	10°46'E
Industry SS [+1916]			british	cargo ship	steam	torpedo	1888	1916	0	206	4044	51°11'N	12°46'W
Ingenieur General Haerbleicher SS [+1945]			french	cargo ship	steam	ran aground (wrecked)	1944	1945	462	7067			
Ingenieur Riebel SS [+1941]			german	escort vessel	steam	torpedo	1911	1941		675			
Inishowen Head SS [+1917]			british	cargo ship	steam	mine	1886	1917	1	189	3050	51°40,152'N	05°17,537'W
Innisfallen MV [+1940]			british	passenger ship	motor vessel (diesel)	mine	1930	1940	4	870	3071	53°26,063'N	03°01,455'W
Inverampton SS [+1928]			british	tanker	steam	ran aground (wrecked)	1920	1928	625	715			
Iran SS [+1917]			british	cargo ship	steam	ran aground (wrecked)	1896	1917	0	6250	35°42,197'N	21°16,603'W	
Island Cypress SS [+1963]			canadian	barge, lighter	steam	ran aground (wrecked)	1929	1963	863	3046	47°54,572'N	124°38,824'W	
Istrar SS [+1916]			british	cargo ship	steam	torpedo	1896	1916	1	301	4582	33°15'N	28°20'E
Italian SS [+1869]			british	cargo ship	steam	ran aground (wrecked)	1861	1869	32	8	1860		
Justicia HMS [+1918]			british	ocean liner	steam	torpedo	1914	1918	15	436	32234	55°39,783'N	07°43,219'W
Kabinda SS [+1939]			belgian	cargo ship	steam	ran aground (wrecked)	1917	1939	520	5182	51°15,084'N	01°29,179'E	
Kate SS [+1941]			greek	cargo ship	steam	mine	1918	1941	2	524	5197		
Kathlwar MV [+1937]			british	passenger/cargo ship	motor vessel (diesel)	ran aground (wrecked)	1924	1937	611	4150	15°03,091'S	40°47,374'E	
Kharbine SS [+1904]			russian	ocean liner	sail and steam	blockship	1881	1904		3657			
King Arthur MV [+1942]			british	cargo ship	motor vessel (diesel)	torpedo	1928	1942	0	763	5224	10°30'N	59°50'W
King Edgar MV [+1945]			british	cargo ship	motor vessel (diesel)	torpedo	1927	1945	4	757	4536	51°53,124'N	05°35,928'W
King Edwin MV [+1943]			british	cargo ship	motor vessel (diesel)	scuttled	1927	1943	758	4536	35°55,201'N	14°33,942'E	
King Egbert MV [+1939]			british	cargo ship	motor vessel (diesel)	mine	1928	1939	1	759	4536	52°55,124'N	01°30,939'E
King John MV [+1940]			british	cargo ship	motor vessel (diesel)	charges/explosives	1928	1940	760	5528	20°40'N	59°26'W	
King Lud MV [+1942]			british	cargo ship	motor vessel (diesel)	torpedo	1928	1942	39	761	5224	20°00'S	40°00'E
King Malcolm MV [+1941]			british	cargo ship	motor vessel (diesel)	torpedo	1925	1941	38	692	5120	47°40'N	51°15'W
Kohina Maru [+1916]			japanese	passenger/cargo ship	sail and steam	torpedo	1884	1916	0	174	3164		
Koolama MV [+1942]			australian	passenger ship	motor vessel (diesel)	air raid	1937	1942	1003	4068	12°45'S	128°15'E	
Korshamn MV [+1941]			swedish	cargo ship	motor vessel (diesel)	torpedo	1920	1941	26	514	6673	61°09'N	12°20'W

http://www.wrecksite.eu/ownerBuilderView.aspx?1055#&&aj=z2mMeoBr4zPVq%2bX5ByI6vvAGE%2fxX8r2W996%2bNhvnmA4%3d

List of all Harland and Wolff ships lost – 7 of 18

copyrights: Unknown - onbekend - inconnu
 ref. used: Lloyd's of London, Lloyd's Register of Shipping

Chipchase Nick 21/08/2010 [EN]

 Company built ships 1926

copyrights: Unknown - onbekend - inconnu
 ref. used: Lloyd's of London, Lloyd's Register of Shipping
[insert new document](#)

Ships lost show prev. names show pos. builder enc

417 results sorted by: Name

[1](#) [2](#) [3](#) [4](#) [5](#) [6](#)

Name	Rep	Media	Nationality	Type	Propulsion	Cause Lost	Year ¹	Year ²	±	No.	Weight	Latitude	Longitude
LCT-102 (+1941)			british	LCT (landing craft tank)	petrol engine	founded	1941	1941		1130	296	18°45'N	21°18'W
LCT-11 HMS (+1941)			british	LCT (landing craft tank)	petrol engine	founded	1940	1941		1121	226		
LCT-12 HMS (+1941)			british	LCT (landing craft tank)	petrol engine	founded	1940	1941		1122	226		
Leander HMS (+1989)			british	frigate	steam turbine	used as a target	1961	1989	0	2450			
Liguria SS (+1941)			italian	ocean liner	steam	air raid	1918	1941		517	13967		
Lira (+1927)				motor vessel (diesel)				1977		7133		07°30'N	71°32'E
Llanquihue SS (+1928)			chilean	cargo ship	steam	ran aground (wrecked)	1893	1928	0	275	3590		
Lochevon MV (+1939)			british	cargo ship	motor vessel (diesel)	torpedo	1938	1939	0	999	9205	50°25'N	13°10'W
Lochkatrine MV (+1942)			british	cargo ship	motor vessel (diesel)	torpedo	1922	1942	9	508	9149	45°52'N	46°44'W
Lochmonar MV (fwd part) (+1927)			british	cargo ship	motor vessel (diesel)	ran aground (wrecked)	1924	1927		517	9463	53°31,881'N	03°08,446'W
Lord Charlemon SS (+1918)			british	cargo ship	steam	torpedo	1886	1918	8	193	3209	36°15'N	03°04'W
Lord Lansdowne SS (+1912)			british	cargo ship	steam	ran aground (wrecked)	1884	1912	0	170	2726	13°07,832'N	59°24,644'W
Lord Londonderry SS (+1909)			british	cargo ship	steam	fire	1888	1909	0	213	2523	37°57,200'N	09°31,246'W
Lord O'Neill SS (+1898)			british	cargo ship	steam	ran aground (wrecked)	1884	1898		166	2751		
Loyalty HMS (J217) (+1944)			british	minesweeper	steam	torpedo	1941	1944		850		50°12,719'N	00°44,020'W
Lucky Carrier MV (+1956)			norwegian	tanker	motor vessel (diesel)	ran aground (wrecked)	1927	1956		750	1412		
Lynx HMS (part) (+1915)			british	destroyer	steam	mine	1913	1915	70	957		58°09,913'N	02°30,730'W
M-30 HMS (+1916)			british	monitor	steam	gunfire - shelled	1915	1916		486	535		
Madrid MV (+1936)			argentinian	cargo ship	motor vessel (diesel)	ran aground (wrecked)	1925	1936	0	704	878	33°28'S	60°01'W
Magdalena RMS (fore part) (+1949)			british	cargo ship	steam turbine	ran aground (wrecked)	1948	1949		1354	17547	22°57,686'S	43°07,594'W
Magellan SS (II) (+1918)			british	cargo ship	steam		1893	1918	1	3642		38°06,133'N	09°07,166'E
Maharatta SS (+1909)			british	cargo ship	steam	ran aground (wrecked)	1892	1909		246	5730	51°14,492'N	01°28,754'E
Malakand SS (+1917)			british	passenger ship	steam	torpedo	1905	1917	1	373	7653	49°20'N	10°00'W
Maloja SS (+1916)			british	ocean liner	steam	mine	1911	1916	155	414	12358	51°04,869'N	01°18,126'E
Mamari SS (Tender C.) (+1941)			british	passenger/cargo ship	steam	torpedo	1911	1941		421	7924	53°22,578'N	00°59,958'E
Manes P. MV (+1970)			greek	passenger ship	motor vessel (diesel)	ran aground (wrecked)	1955	1970		7791			
Manxman SS (+1919)			british	cargo ship	sail and steam	cargo shift	1888	1919	39	210	4827	41°53'N	59°51'W
Marathon SS (+1941)			greek	cargo ship	steam	gunfire - shelled	1919	1941		542	8010	21°40'N	23°50'W
Marconi SS (+1941)			british	cargo ship	steam	torpedo	1917	1941	22	462	7402	58°00'N	41°00'W
Mariner MV (+1973)			cypriot	cargo ship	motor vessel (diesel)	water leakage (flooding)	1955	1973		1508	7917	35°00'N	152°47'E
Marmora SS (+1918)			british	ocean liner	steam	torpedo	1903	1918	10	350	12358	50°41,53'N	08°53,04'W
Mary Slessor MV (+1943)			british	cargo ship	motor vessel (diesel)	mine	1930	1943	32	854	5027	35°55,220'N	06°00,913'W
Marzocco SS (ex War Arvan) (+1940)			british	cargo ship	steam	blockship	1918	1940		528	5393	57°30,535'N	01°45,818'W
Matheran SS (I) (+1917)			british	cargo ship	steam	mine	1906	1917	1	375	7654	33°25,938'S	17°54,552'E
Mattawin MV (+1942)			british	cargo ship	motor vessel (diesel)	torpedo	1923	1942	0	582	6919	40°14,009'N	66°00,958'W
Mayumba SS (+1883)			british	passenger/cargo ship	sail and steam	fire	1859	1883	2	1569			
Med Star MV (+1967)			80	7	1	40	1927	19671009		800	2650		152009
Memnon SS (+1917)			british	cargo ship	steam	torpedo	1890	1917	6	228	3203	50°12,250'N	02°40,981'W
Memphien SS (+1917)			british	passenger/cargo ship	steam	torpedo	1908	1917	32	6305		52°49,731'N	05°35,791'W

http://www.wrecksite.eu/ownerBuilderView.aspx?1055#&&aj=z2mMeoBr4zPVq%2bX5ByI6vmGvOo8NNTKGo9BAMUdjBsE%3d

1/12/2016

WRECKSITE - Harland & Wolff Ltd. Belfast & Glasgow

Memphis SS [+1896]		british	cargo ship	steam	ran aground (wrecked)	1890	1896	9	233	3797	51°27,630'N	09°49,429'W
Merrimack SS [+1899]		british	ocean liner	steam	missing	1890	1899	36	223	4177		
Mesaba SS [+1918]		british	cargo ship	steam	torpedo	1898	1918	20	6833		52°15,265'N	05°38,642'W
Mexico SS [+1895]		british	passenger/cargo ship	steam	ran aground (wrecked)	1890	1895	0	232	3185	52°00,830'N	55°16,837'W
Minneapolis SS [+1916]		british	ocean liner	steam	torpedo	1900	1916	12	13443		36°30'N	18°22'E
Minnehaha SS [+1917]		british	ocean liner	steam	torpedo	1900	1917	43	329	13714	51°17,82'N	09°17,88'W
Minnetonka SS (I) [+1918]		british	ocean liner	steam	torpedo	1902	1918	4	339	13528	36°09,167'N	15°17,500'E
Minnewaska SS (III) [+1916]		british	cargo ship	steam	mine	1909	1916	0	397	14317	35°29,302'N	24°10,419'E
Monte Gorbea MV [+1942]		spanish	cargo ship	motor vessel (diesel)	torpedo	1923	1942	52	58	3720	14°55'N	60°00'W
Monte Negro SS [+1950]		spanish	cargo ship	steam	ran aground (wrecked)	1919	1950	548	5253		04°52,725'N	01°43,652'W
Moordrecht MV [+1940]		dutch	tanker	motor vessel (diesel)	torpedo	1930	1940	25	171	7493	43°34'N	14°20'W

[1](#) [2](#) [3](#) [4](#) [5](#) [6](#)

BELGIUM

NV, N.V. (Naamloze Vennootschap): ≈ p.l.c. (UK)
SA, S.A. (Société Anonyme): ≈ p.l.c. (UK)

DENMARK

A/S (Aktieselskab): ≈ p.l.c. (UK).

FRANCE

SA, S.A. (Société anonyme): ≈ public limited company (p.l.c.) (UK)

GERMANY

AG, A.G. (Aktiengesellschaft): ≈ p.l.c. (UK).
GmbH, G.m.b.h. (Gesellschaft mit beschränkter Haftung): ≈ Ltd. (UK).

ITALY

S.p.A. (Società per Azioni): ≈ p.l.c. (UK)
S.r.l., Srl, S.R.L. (Società a responsabilità limitata): ≈ Ltd. (UK)

JAPAN

株式会社 (kabushiki-kaisha or kabushiki-gaisha, "K.K.") - "stock company," typical form of business corporation
有限会社 (yūgen-kaisha or yūgen-gaisha, "Y.K.") - "limited company," a close corporation form for smaller businesses
合資会社 (gōdō-kaisha or gōdō-gaisha, "G.K.") - "amalgamated company," a close corporation form similar to the American LLC
合夥会社 (gōshi-kaisha or gōshi-gaisha, "GSK") - corporation similar to a limited partnership
合名会社 (gōmei-kaisha or gōmei-gaisha, "GMK") - corporation similar to a general partnership

NETHERLANDS

N.V. (Naamloze Vennootschap): ≈ p.l.c. (UK). The name means "nameless company".
B.V. (Besloten Vennootschap): ≈ Ltd. (UK). The name means "secluded company".

NORWAY

AS, A/S (Aksjeselskap): ≈ Ltd. (UK).

PORTUGAL

Lda, (Limitada): ≈ Ltd. (UK)
S.A. (Sociedade Anónima): ≈ p.l.c. (UK),

SPAIN

S.A. (Sociedad Anónima): ≈ p.l.c. (UK).

SWEDEN

AB, A/B (Aktiebolag): ≈ Ltd. (UK).

[more info on company entities](#)

copyright © 2001-2016 [The Wrecksite](#) [sitemap](#)



Harland & Wolff Ltd.

Details

owner: no
 builder: yes [381]
 engine builder: yes [152]
 is navy: no
 nationality: british
 city: [Belfast & Glasgow](#)
 country: United Kingdom
 year founded: 1861
 year stopped:
 reason stopped:
 acquired by:
 companies acquired: [1912] [London & Glasgow Engineering & Iron Shipbuilding Co. Ltd.](#)
 [1913] [Mackie & Thomson & Co.](#)
 [1916] [J. Caird & Co.](#)
 [1919] [Inglis A. & J. Ltd.](#)
 [1919] [Henderson D. & W. & Co. Ltd.](#)
 references: [gracesguide.co.uk](#)
 entered by: [Jan Lettens](#)
 entered: 08/01/2009
 last update: [Carl Racey](#)
 last update: 15/10/2010

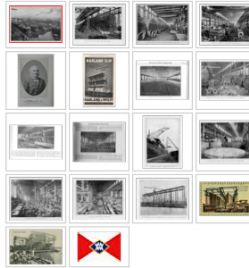
History

[Carl Racey](#) 28/05/2014
 Harland and Wolff was formed in 1861 by Edward James Harland and Hamburg-born Gustav Wilhelm Wolff. Based in Belfast at Queen's Island, Harland and Wolff are a huge and very important shipbuilding company. The shipbuilding complex is only one of two yards left in the U.K. capable of building large merchant ships. The yard was most well known for building high-class transatlantic passenger liners and was considered to be the best in the world.
 The company has built over 1700 ships at four yards and has been in operation for over 135 years.
 ref. used: [gracesguide.co.uk](#)
[insert new history](#)

Pictures



[Chipchase Nick](#) 02/11/2009
 copyrights: [Chipchase Nick](#)
 ref. used: [Chipchase Nick, Personal Research](#) [Chipchase N.](#)



[insert new picture](#)

Documents

[Chipchase Nick](#) 07/01/2011 [EN]

[Belfast Shipbuilding.](#)



copyrights: [Unknown - onbekend - Inconnu](#)
 ref. used: [Unknown - onbekend - Inconnu](#)

[Chipchase Nick](#) 23/08/2010 [EN]

[Company built ships listed 1912](#)



Search

search owner/builder:
 search wreck
 name starts with
 show prev. names
[search](#) [A-Z](#)

FAVOURITE C

West Indies - !

VISITED CH:

Mizen Head - Dir

Bristol Channe

Severn Estuar

Akra Kokkala to

Ile Vierge à Poi

PAGES VISI

- Harland & Wolff L
- Tarquah 7 SS [+1]
- Abbots Roger
- Opal HMS [+1911]
- John Brown & Co
- Sargon PV (CY85)
- Egret SS (+1892)
- Petite Mere (F-91)
- Petite Mere F918
- 751*25 XXXN-00:
- 751*25 XXXN-00:
- Gabrielle SS (+11)
- MTB-217 HMS (+)
- Five LCA [+1941]
- Eight LCAS [+194
- MTB-67 HMS [+1
- Eight Lcas ships [
- Five Lca ships [+
- MTB-216 HMS (+
- A-6, A-18 & A-20
- 735*28*XXXN-02:
- 735*28*XXXN-02:
- Petite Mere (+19
- Titanic RMS [+19
- Tabago SS (+188
- Neol Noa
- Gustave (+1856)
- Malo et Cie.
- Malo Et Cie.
- Gustav Adolph
- Gustav Adolph Sv
- Gustave Zédé
- Gustave Zédé [+
- War Song SS [+1
- 748*03*XXXN-00:
- Gustave Zédé (ex
- Gustave Zédé (G
- Gustave Zédé (A:

List of all Harland and Wolff ships lost – 11 of 18

copyrights: [Unknown - onbekend - inconnu](#)
 ref. used: [Lloyd's of London, Lloyd's Register of Shipping](#)

[Chipchase Nick](#) 21/08/2010 [EN]
[Company built ships 1926](#)



copyrights: [Unknown - onbekend - inconnu](#)
 ref. used: [Lloyd's of London, Lloyd's Register of Shipping](#)
[Insert new document](#)

Ships lost show prev. names show pos. builder engine builder

417 results sorted by: [Name](#)

1 2 3 4 5 6 7 8 9

Name	Rep	Media	Nationality	Type	Propulsion	Cause Lost	Year ¹	Year ²	±	No.	Weight	Latitude	Longitude
MTB-356 HMS (+1943)			british	torpedo boat	petrol engine	gunfire - shelled	1942	1943		42			
Munster MV (+1940)			british	passenger/cargo ship	motor vessel (diesel)	mine	1938	1940	0	996	4305	53°35,996'N	03°26,811'W
Narkunda SS (+1942)			british	ocean liner	steam	air raid	1920	1942	31	471	16632	36°49,380'N	05°00,323'E
Naronic SS (+1893)			british	ocean liner	steam	ice	1892	1893	74	251	6594	48°00'N	47°37'W
New Brunswick SS (+1942)			british	cargo ship	steam	torpedo	1919	1942	3	555	6529	36°53'N	22°55'W
New Columbia SS (+1943)			british	cargo ship	steam	torpedo	1920	1943	0	567	6574	04°25'N	05°03'E
New Sevilla SS (+1940)			british	whale factory	steam	torpedo	1900	1940	2	332	13801	55°53,987'N	07°23,111'W
New Toronto SS (+1942)			british	cargo ship	steam	torpedo	1919	1942	4	6568		05°57'N	02°30'E
Newcrest MV (+1983)			british	cargo ship	motor vessel (diesel)	ran aground (wrecked)	1959	1983		1592	6221	43°32,94'N	05°40,08'W
Nikkou Maru (+1943)			japanese	cargo ship	steam	torpedo	1918	1943		543	6529	34°33'N	138°37'E
Norah Moller MV (+1942)			british	passenger/cargo ship	motor vessel (diesel)	air raid	1915	1942	17	452	4348		
Norseman SS (+1916)			british	ocean liner	steam	ran aground (wrecked)	1897	1916	0	318	9542	40°28,358'N	22°49,177'E
Nortind MV (+1943)			norwegian	tanker	motor vessel (diesel)	torpedo	1941	1943	42	1083	8221	59°00'N	39°00'W
Nurjahan SS (I) (+1890)			british	passenger/cargo ship	sail and steam	ran aground (wrecked)	1884	1890		173	2967		
Oakbank MV (+1942)			british	cargo ship	motor vessel (diesel)	torpedo	1926	1942	25	685	5159	00°46'S	37°58'W
Oceana SS (+1912)			british	ocean liner	steam	collision	1888	1912	9	201	6610	50°42,367'N	00°25,627'E
Oceanic RMS (+1914)			british	ocean liner	steam	ran aground (wrecked)	1897	1914	0	17274		60°07,019'N	01°58,843'W
Olympic II SV (+1940)			american	clipper	sailing ship	collision	1877	1940	8	1766		33°39,401'N	118°13,854'W
Omega SS (+1918)			american	ocean liner	sail and steam	torpedo	1880	1918	26	138	3636	50°26,560'N	05°20,257'W
Oranjestad SS (+1942)			british	tenker	steam	torpedo	1927	1942	15	809	2396	12°24,527'N	69°53,720'W
Oravia RMS (+1912)			british	ocean liner	steam	ran aground (wrecked)	1895	1912	0	310	5358	51°40,822'S	57°43,028'W
Orchis HMS (K76) (+1944)			british	corvette	steam	mine	1940	1944		925			
Oriana SS (+1917)			italian	cargo ship	steam	gunfire - shelled	1886	1917	0	186	3132	38°21,467'N	00°21,533'W
Orient Pioneer MV (+1990)			liberian	cargo - bulk carrier	motor vessel (diesel)	abandoned	1971	1990		1684	51506	16°04'S	69°20'E
Orissa RMS (+1918)			british	ocean liner	steam	torpedo	1895	1918	6	286	5358	56°02,991'N	07°31,049'W
Orissa SS (+1916)			british	ocean liner	steam	ran aground (wrecked)	1894	1916		5317		46°59,171'N	02°21,243'W
Oronsa SS (+1918)			british	ocean liner	steam	torpedo	1906	1918	3	377	8075	52°53,101'N	05°05,214'W
Owasco SS (+1917)			american	ocean liner	sail and steam	torpedo	1893	1917	2	259	4630	38°10'N	00°18'W
Palma MV (+1944)			british	cargo ship	motor vessel (diesel)	torpedo	1941	1944	7	1028	5419	05°51'N	79°58'E
Palmas SS (+1903)			british	cargo ship	sail and steam	missing	1888	1903	42	212	2495	50°00'N	29°00'W
Pampas MV (after Part) (+1942)			british	cargo ship	motor vessel (diesel)	air raid	1941	1942		1027	5415	35°52,9'N	14°30,2'E
Parnon MV (+1954)			greek	cargo ship	motor vessel (diesel)	foundered	1941	1954		1096	724	40°15'N	13°20'E
Pelayo MV (+1942)			british	cargo ship	motor vessel (diesel)	torpedo	1927	1942	17	742	1346	43°18'N	17°38'W
Pellias MV (+1972)			greek	cargo ship	motor vessel (diesel)	foundered	1946	1972	0	1193	8590	31°15'S	35°40'E
Penelope HMS (97) (+1944)			british	cruiser (light)	steam	torpedo	1935	1944	417		5270	40°55'N	13°25'E
Pennland SS (+1941)			dutch	ocean liner	steam	air raid	1922	1941	4	457	16322	37°10'N	23°50'E
Pericles SS (+1910)			british	passenger/cargo ship	steam	ran aground (wrecked)	1908	1910	0	392	10,925	34°25,509'S	115°08,291'E
Perseus SS (+1941)			greek	cargo ship	steam	gunfire - shelled	1918	1941	14	535	5178	37°12'N	21°20'W

<http://www.wrecksite.eu/ownerBuilderView.aspx?1055#&&aj=z2mMeoBr4zPvq?2bX5ByI6vs6cDtzpNCBYHYRSJe8R9uc%3d>

List of all Harland and Wolff ships lost – 12 of 18

copyrights: [Unknown - onbekend - inconnu](#)
 ref. used: [Lloyd's of London, Lloyd's Register of Shipping](#)

[Chipchase Nick](#) 21/08/2010 [EN]

 [Company built ships 1926](#)

copyrights: [Unknown - onbekend - inconnu](#)
 ref. used: [Lloyd's of London, Lloyd's Register of Shipping](#)
[insert new document](#)

Ships lost show prev. names show pos. builder er

417 results sorted by: Name

1 2 3 4 5 6

Name	Rep	Media	Nationality	Type	Propulsion	Cause Lost	Year ¹	Year ²	±	No.	Weight	Latitude	Longitude
Quetsino SV (ex British Merchant) (+1909)			american	fully rigged ship	sailing ship	ran aground (wrecked)	1880	1909		137	1742	54°34,115'N	130°42,525'W
Queensmore SS (+1889)			british	cargo ship	steam	ran aground (wrecked)	1889	1889	0	215	4195	51°28,463'N	09°49,863'W
Redyr SS (+1929)			british	cargo ship	steam	foundered	1918	1929	21	537	2357	51°01,030'N	04°32,066'W
Regian HMS (+1918)			british	monitor	steam	gunfire - shelled	1915	1918	122	476	6150	40°13,669'N	25°57,669'E
Rejoutena HMS (F35) (+1941)			british	cruiser (auxiliary)	steam	torpedo	1925	1941	40	661	16568	64°50'N	27°25'W
Rawalpindi HMS (+1939)			british	ocean liner	steam	naval battle	1925	1939	275	660	16697	63°39,5'N	11°19,0'W
Redline No. 1 (+1925)			british	tanker	steam	gale/storm	1924	1925	9	698	272	50°26,950'N	05°25,111'W
Regency MV (+1889)			panamanian	passenger/cargo ship	motor vessel (diesel)	foundered	1952	1989		1461	3824		
Republic RMS (II) (+1909)			british	ocean liner	steam	collision	1903	1909	7	345	15378	40°42,319'N	70°09,297'W
Richmond Castle MV (+1942)			british	cargo ship	motor vessel (diesel)	torpedo	1939	1942	14	1012	7798	50°25'N	25°05'W
Rina Corrado SS (+1941)			italian	cargo ship	steam	gunfire - shelled	1918	1941		538	5222	37°08'N	18°09'E
Rio Bravo MV (+1981)			greek	cargo - bulk carrier	motor vessel (diesel)	fire	1960	1981	0	1599	12011	36°55,867'N	34°06,866'W
River Swift MV (+1948)			british	cargo ship	motor vessel (diesel)	fire	1915	1948		466	6225		
Rohilla SS (+1941)			british	passenger ship	steam	ran aground (wrecked)	1906	1914	84	381	7409	54°29,359'N	00°35,801'W
Romolo Gessi SS (+1941)			italian	cargo ship	steam	scuttled	1917	1941		533	5155		
Rothesay Castle SS (+1940)			british	cargo ship	steam	ran aground (wrecked)	1935	1940		944	7016	55°53,144'N	06°21,758'W
Rowallan Castle MV (+1942)			british	cargo ship	motor vessel (diesel)	air raid	1939	1942	0	1013	7801	34°54'N	19°40'E
Roxburgh Castle MV (+1943)			british	cargo ship	motor vessel (diesel)	torpedo	1937	1943		993	7801	38°12'N	26°22'W
Rubens MV (+1951)			british	cargo ship	motor vessel (diesel)	fire	1920	1951		569	6548	35°12,2'N	140°24,2'E
Runic SS (+1961)			british	cargo ship	steam turbine	ran aground (wrecked)	1950	1961	0	1414	13587	29°26,967'S	159°03,400'E
Russian SS (+1916)			british	cargo ship	steam	torpedo	1895	1916	28	291	8825	35°30'N	18°52'E
Sagamore SS (+1917)			british	cargo ship	steam	torpedo	1892	1917	52	256	5197	52°20,609'N	13°20,556'W
Saint Pancras SS (+1895)			british	cargo ship	steam	ran aground (wrecked)	1890	1895		224	4283		
San Antonio SS (+1943)			german	cargo ship	steam	air raid	1930	1943		888	6013		
San Arcadio MV (+1942)			british	tanker	motor vessel (diesel)	torpedo	1935	1942	41	938	7419	38°10'N	63°50'W
San Carlos SS (+1965)			dominican	tanker	steam	ran aground (wrecked)	1927	1965		795	2395	18°24,758'N	70°01,091'W
San Diego SS (+1943)			german	cargo ship	steam	air raid	1930	1943		889	6013		
San Emiliano MV (+1942)			british	tanker	motor vessel (diesel)	torpedo	1939	1942	40	1015	8071	07°22'N	54°08'W
San Francisco SS (+1943)			french	cargo ship	steam	air raid	1930	1943		890	6013		
San Mardeno SS (+1954)			panamanian	cargo ship	steam	ran aground (wrecked)	1931	1954		7346	20°51,746'N	71°26,002'E	
San Nicolas SS (+1942)			british	tanker	steam	torpedo	1926	1942	7	739	2391	11°48,000'N	70°30,459'W
San Pietro SS (+1942)			italian	cargo ship	steam	scuttled	1918	1942		529	5292		
Saugor SS (+1941)			british	cargo ship	steam	torpedo	1928	1941	59	801	6303	53°36'N	16°40'W
Schiedyk MV (+1968)			dutch	cargo ship	motor vessel (diesel)	ran aground (wrecked)	1949	1968		1366	7594		
Scotsman SS (+1899)			british	ocean liner	steam	ran aground (wrecked)	1894	1899	13	289	6041	51°55,569'N	55°25,233'W
Scottish Star SS (+1942)			british	cargo ship	steam	torpedo	1917	1942	4	460	7224	13°24'N	49°36'W
Seabird SS (+1958)			panamanian	cargo ship	steam	air raid	1940	1958		1063	816		
Seang Choon SS (+1917)			british	cargo ship	steam	torpedo	1891	1917	19	240	5807	51°19,519'N	09°47,790'W

List of all Harland and Wolff ships lost – 14 of 18

1/12/2016

WRECKSITE - Harland & Wolff Ltd. Belfast & Glasgow

Seasprite MV [+1979]			greek	cargo ship	(diesel)	(wrecked)	1959	1979	1609	6791	23°30,2'N	68°20,3'E
Shikisan Maru [+1944]			japanese	cargo ship	steam	torpedo	1925	1944	15	675	4725	20°27,083'N 118°31,250'E
Shoryu Maru (Shoryu Maru Parche) [+1944]			japanese	cargo ship	steam	torpedo	1919	1944	545	6475	20°48'N	118°03'E
Siberia Maru (+1944)			17	7	2	6	1909	19440924		407	3213	138901
Sierra Leone SS [+1910]			1	129	2	5	1907	19100701			3730	33 101286
Simnia MV (+1941)			1	6	1	39	1936	19410315	3	962	6197	137257
Sindia SV (+1901)			1	18	3	5	1887	19011215		204	3068	30724
Sir Hastings Anderson SS (+1942)			1	24	2	6	1934	19420000		935	228	219573
Siris SS [+1942]			british	cargo ship	steam	torpedo	1919	1942	3	571	5242	31°20'N 24°48'W
Sitalia MV [+1940]			british	tanker	motor vessel (diesel)	torpedo	1937	1940	1	981	6218	55°42'N 16°48'W
Sixtus SV [+1905]			danish	barque - bark	sailing ship		1886	1905	194	1707	51°29,248'S 57°46,994'W	
Skytteren SS [+1942]			norwegian	whale factory	steam	scuttled	1899	1942	333	12531	58°09,31'N 11°11,36'E	

[1](#) [2](#) [3](#) [4](#) [5](#) [€](#)

BELGIUM

NV, N.V. (Naamloze Vennootschap): ≈ p.l.c. (UK)
SA, S.A. (Société Anonyme): ≈ p.l.c. (UK)

DENMARK

A/S (Aktieselskab): ≈ p.l.c. (UK).

FRANCE

SA, S.A. (Société anonyme): ≈ public limited company (p.l.c.) (UK)

GERMANY

AG, A.G. (Aktiengesellschaft): ≈ p.l.c. (UK).
GmbH, G.m.b.h. (Gesellschaft mit beschränkter Haftung): ≈ Ltd. (UK).

ITALY

S.p.A. (Società per Azioni): ≈ p.l.c. (UK)
S.r.l., Srl, S.R.L. (Società a responsabilità limitata): ≈ Ltd. (UK)

JAPAN

株式会社 (kabushiki-kaisha or kabushiki-gaisha, "K.K.") - "stock company," typical form of business corporation
有限会社 (yūgen-kaisha or yūgen-gaisha, "Y.K.") - "limited company," a close corporation form for smaller businesses
合資会社 (gōsai-kaisha or gōsai-gaisha, "G.K.") - "armalgamated company," a close corporation form similar to the American LLC
合夥会社 (gōmei-kaisha or gōmei-gaisha, "GSK") - corporation similar to a limited partnership
合名会社 (gōmei-kaisha or gōmei-gaisha, "GMK") - corporation similar to a general partnership

NETHERLANDS

N.V. (Naamloze Vennootschap): ≈ p.l.c. (UK). The name means "nameless company".
B.V. (Besloten Vennootschap): ≈ Ltd. (UK). The name means "secluded company".

NORWAY

AS, A/S (Aksjeselskap): ≈ Ltd. (UK).

PORTUGAL

Lda. (Limitada): ≈ Ltd. (UK)
S.A. (Sociedade Anónima): ≈ p.l.c. (UK).

SPAIN

S.A. (Sociedad Anónima): ≈ p.l.c. (UK).

SWEDEN

AB, A/B (Aktiebolag): ≈ Ltd. (UK).

[more info on company entities](#)

copyright © 2001-2016 [The Wrecksite](#) siteman

copyrights: Unknown - onbekend - inconnu
 ref. used: Lloyd's of London, Lloyd's Register of Shipping

Chipchase Nick 21/08/2010 [EN]
 Company built ships 1926



copyrights: Unknown - onbekend - inconnu
 ref. used: Lloyd's of London, Lloyd's Register of Shipping
 insert new document

Ships lost show prev. names show pos. builder

417 results sorted by: Name

1 2 3 4 5


Name	Rep	Media	Nationality	Type	Propulsion	Cause Lost	Year*	Year†	‡	No.	Weight	Latitude	Longitude			
Slieve Bawn SV (+1904)			british	fully rigged ship	sailing ship	ran aground (wrecked)	1877	1904		111	2670	40°14,767'S	73°43,183'W			
Somali SS (+1941)			british	passenger ship	steam	air raid	1930	1941		898	6809	55°34,090'N	01°36,121'W			
Sophoclyve MV (+1960)			liberian	cargo ship	motor vessel (diesel)	water leakage (flooding)	1925	1960		691	6810	15°57'N	56°09'E			
Sounion MV (+1973)			greek	passenger ship	motor vessel (diesel)	charges/explosives	1936	1973	2	963	3244					
Springbank HMS (+1941)			british	cargo ship	motor vessel (diesel)	torpedo	1926	1941	32	687	5159	49°09'N	20°10'W			
Saurer HMS (I-301) (+1965)			british	minesweeper	steam turbine	mine	1943	1945	7	1206	850	07°45,127'N	98°28,833'E			
St. Olaves HMS (+1942)			british	tug	steam	ran aground (wrecked)	1919	1942		564	468	58°38,976'N	03°02,095'W			
Stad Maastricht SS (+1940)			dutch	cargo ship	steam	torpedo	1924	1940		609	6552	51°42,939'N	01°22,795'E			
Star of Bengal SV (+1908)			american	fully rigged ship	sailing ship	ran aground (wrecked)	1874	1908	112	86	1870	55°49,417'N	134°16,583'W			
Star Of Erin SV (+1892)			british	barque - bark	sailing ship	ran aground (wrecked)	1862	1892		16	949					
Star Of Greece SV (+1888)			british	fully rigged ship	sailing ship	ran aground (wrecked)	1868	1888	18	57	1289	35°15,154'S	138°27,601'E			
Star Of Mecca MV (+1962)			saudi-arabian	cargo ship	motor vessel (diesel)	ran aground (wrecked)	1927	1962		743	1346	14°31,615'N	49°07,883'E			
Star Of Scotia (+1887)			british	barque - bark	sailing ship	foundered	1864	1887	9	24	999	52°19,91'S	59°18,06'W			
Steelfield SV (+1889)			british	barque - bark	sailing ship	missing	1877	1889		108	1315					
Stella Maris (Stella Della Mare) (+1916)			italian	fully rigged ship	sailing ship		1875	1916		1201	4015	40°15,366'N	02°49,631'E			
Suevic SS (bow) (+1907)			british	ocean liner	steam	ran aground (wrecked)	1899	1907		12500	49°57,236'N	05°12,661'W				
Syrian (+1869)			british	cargo ship	steam	ran aground (wrecked)	1860	1869	3	1492						
Talyabi SS (+1918)			indian	passenger/cargo ship	sail and steam	foundered	1889	1918		220	3157	49°50'N	08°30'W			
Talookdar SV (+1890)							1	59	3	2	1885	18901213	22	183	2120	186230
Tamon Maru No.12 (+1945)							17	129	6	14	1890	19450408	222	3142		134974
Telvii Maru (+1944)			japanese	cargo ship	steam	air raid	1918	1944		525	5272					
Temmei Maru (+1916)							17	129	6	39	1889	19160810	0	221	3360	166474
Terror HMS (I 03) ? (+1941)							1	0	2	6	1916	19410223	493	7200	33	98977
Tharos SS (+1951)			greek	cargo ship	steam	gale/storm	1919	1951		354	5030	70°58,01'N	25°53,92'E			
Thursby SS (+1923)							1	7	2	40	1876	19230826	101	496		195669
Tia Juana SS (+1942)			british	tanker	steam	torpedo	1928	1942	17	833	2395	09°36'N	79°26'W			
Titanic RMS (+1912)			british	ocean liner	steam	ice	1909	1912	1514	401	52310	41°43,533'N	49°56,817'W			
Tarr Head SS (I) (+1917)			british	cargo ship	sail and steam	torpedo	1894	1917	0	274	5911	52°10'N	14°00'W			
Tran MV (+1954)			norwegian	cargo ship	motor vessel (diesel)	capsized	1916	1954		687	306	58°25,783'N	05°46,300'E			
Tranevaal SAS (K602) (+1978)			south-african	frigate	steam	artificial reef	1944	1978	0	1251	1435	34°16,084'S	18°28,867'E			
Trelissick SS (II) (+1941)			british	cargo ship	steam	air raid	1919	1941	2	5265	53°07,622'N	01°23,956'E				
Treveal SS (+1920)			british	cargo ship	steam	ran aground (wrecked)	1919	1920	36	549	5243	50°35,203'N	02°04,982'W			
Trevorbyn SS (+1941)			british	cargo ship	steam	torpedo	1920	1941	48	530	5218	51°00'N	19°00'W			
Trichera SV (+1905)			swedish	barque - bark	sailing ship	ran aground (wrecked)	1860	1905	8	5	1003	30°17,3'S	30°45,6'E			
Triona SS (+1940)			british	cargo ship	steam	scuttled	1931	1940	4	911	4413	04°11,55'S	166°56,20'E			
Taze-Hong SS (+1950)			taiwanese	tug	steam	foundered	1918	1950		552	468					
Ulster Duke SS (+1951)			british	passenger ship	steam	foundered	1906	1951		379	2017	42°52,650'N	09°16,133'W			
Ulster Prince MV (+1941)			british	passenger ship	motor vessel (diesel)	ran aground (wrecked)	1930	1941		697	3791					
Ulstermore SS (+1913)			british	cargo ship	steam	ran aground (wrecked)	1894	1913		288	6411	53°31,764'N	03°08,046'W			
Uniwaleco SS (+1942)			south-african	tanker	steam	torpedo	1905	1942	18	369	9755	13°23'N	62°04'W			
Vedamore SS (+1917)			british	cargo ship	steam	torpedo	1896	1917	23	298	6330	51°15,520'N	10°11,039'W			

http://www.wrecksite.eu/ownerBuilderView.aspx?1055#&&aj=z2mMeoBr4zPVq%2bX5Byl6vrp8K0h25xb%2b5feKHKd8T8%3d

List of all Harland and Wolff ships lost – 16 of 18

1/12/2016

WRECKSITE - Harland & Wolff Ltd. Belfast & Glasgow

Veendam I SS (+1898)		dutch	ocean liner	steam	submerged object	1871	1898	0	75	3707	49°19'N	19°47'W
Vervain HMS (K190) [+1945]		british	corvette	steam	torpedo	1941	1945	60		940	51°47,640'N	07°09,131'W
Vestel HMS (J-215) [+1945]		british	minesweeper	steam turbine	air raid	1943	1945	20	1147	850	07°41,53'N	98°15,56'W
Vestelv ? SV [+1917]		norwegian	fully rigged ship	sailing ship	charges/explosives	1880	1917	0	130	1729	55°40,115'N	07°59,632'W
Victoria Nvanza SV (+1894)		british	barque - bark	sailing ship	ran aground (wrecked)	1863	1894		21	1022		
Vrystaat SAS (F157) [+1976]		south-african	destroyer	steam	used as a target	1944	1976	0	834	1710	34°25,200'S	18°21,833'E
W. H. Fuller SS (+1944)		south-african	tug	steam	ran aground (wrecked)	1934	1944	0	937	551	33°51,60'S	26°16,67'E
Walkato HMNZS (+2000)		new zealand	frigate	steam turbine	artificial reef	1965	2000	0		2450	35°39,165'S	174°32,670'E
Waimarama MV (+1942)		british	cargo ship	motor vessel (diesel)	air raid	1938	1942	83	1004	12843	36°24,847'N	11°59,950'E

1 2 3 4 5

BELGIUM

NV, N.V. (Naamloze Vennootschap): ≈ p.l.c. (UK)
SA, S.A. (Société Anonyme): ≈ p.l.c. (UK)

DENMARK

A/S (Aktieselskab): ≈ p.l.c. (UK)

FRANCE

SA, S.A. (Société anonyme): ≈ public limited company (p.l.c.) (UK)

GERMANY

AG, A.G. (Aktiengesellschaft): ≈ p.l.c. (UK)
GmbH, G.m.b.h. (Gesellschaft mit beschränkter Haftung): ≈ Ltd. (UK)

ITALY

S.p.A. (Società per Azioni): ≈ p.l.c. (UK)
S.r.l., Srl, S.R.L. (Società a responsabilità limitata): ≈ Ltd. (UK)

JAPAN

株式会社 (kabushiki-kaisha or kabushiki-gaisha, "K.K.") - "stock company," typical form of business corporation
有限会社 (yūgen-kaisha or yūgen-gaisha, "Y.K.") - "limited company," a close corporation form for smaller businesses
合資会社 (gōdō-kaisha or gōdō-gaisha, "G.K.") - "amalgamated company," a close corporation form similar to the American LLC
合資会社 (gōshi-kaisha or gōshi-gaisha, "GSK") - corporation similar to a limited partnership
合名会社 (gōmei-kaisha or gōmei-gaisha, "GMK") - corporation similar to a general partnership

NETHERLANDS

N.V. (Naamloze Vennootschap): ≈ p.l.c. (UK). The name means "nameless company".
B.V. (Besloten Vennootschap): ≈ Ltd. (UK). The name means "secluded company".

NORWAY

AS, A/S (Aksjeselskap): ≈ Ltd. (UK)

PORTUGAL

Lda. (Limitada): ≈ Ltd. (UK)
S.A. (Sociedade Anónima): ≈ p.l.c. (UK)

SPAIN

S.A. (Sociedad Anónima): ≈ p.l.c. (UK)

SWEDEN


AB, A/B (Aktiebolag): ≈ Ltd. (UK)

[more info on company entities](#)

copyright © 2001-2016 [The Wrecksite](#) [sitemap](#)

copyrights: Unknown - onbekend - inconnu
 ref. used: Lloyd's of London, Lloyd's Register of Shipping

Chipchase Nick 21/08/2010 [EN]
 Company built ships 1926



copyrights: Unknown - onbekend - inconnu
 ref. used: Lloyd's of London, Lloyd's Register of Shipping
[insert new document](#)

Ships lost show prev. names show pos. builder engine builder

417 results sorted by: Name

Name	Rep	Media	Nationality	Type	Propulsion	Cause Lost	Year ¹	Year ²	†	No.	Weight	Latitude	Longitude
Walotira MV (+1940)			british	ocean liner	motor vessel (diesel)	torpedo	1939	1940	1	1019	12823	60°02,899'N	14°37,798'W
Wairangi MV (+1942)			british	ocean liner	motor vessel (diesel)	torpedo	1935	1942	0	924	12436	36°34'N	11°15'E
Walvera MV (+1942)			british	ocean liner	motor vessel (diesel)	torpedo	1934	1942	8	922	12435	45°49'N	34°29'W
Walmer Castle MV (+1941)			british	cargo ship	motor vessel (diesel)	air raid	1936	1941	983	906		47°16'N	22°25'W
War Clover SS (+1917)			british	cargo ship	steam	torpedo	1917	1917	14	521	5174	36°59,93'N	12°34,95'E
Warwick Castle MV (+1942)			british	ocean liner	motor vessel (diesel)	torpedo	1930	1942	63	840	20107	39°12'N	13°25'W
Weirbank MV (+1942)			british	cargo ship	motor vessel (diesel)	torpedo	1925	1942	680	5159		11°29'N	58°51'W
Wellington Star MV (+1940)			british	ocean liner	motor vessel (diesel)	gunfire - shelled	1939	1940	0	1016	12382	42°39'N	17°01'W
Wenny MV (+1969)			norwegian	cargo - bulk carrier	motor vessel (diesel)	capsized	1950	1969	9	1495	8945		
White Head SS (+1917)			british	cargo ship	steam	torpedo	1880	1917	23	135	1172	35°41,93'N	24°16,96'E
Windsor Castle RMS (I) (+1943)			british	ocean liner	steam	torpedo	1922	1943	1	456	19141	37°27'N	00°54'E
Worcestershire SS (+1917)			british	passenger/cargo ship	steam	mine	1904	1917	359	7160		06°49,90'N	79°43,85'E
Yasukawa Maru (+1942)			japanese	cargo ship	motor vessel (diesel)	air raid	1930	1942	882	6710		07°16'S	156°00'E
Yorkshire SS (+1939)			british	passenger/cargo ship	steam	torpedo	1920	1939	58	509	10184	44°52'N	14°31'W
Zamzam (+1941)			egyptian	ocean liner	steam	gunfire - shelled	1909	1941	24	8299		27°41'S	08°08'W
Zenith SS (+1995)			panamanian	passenger ship	steam turbine		1956	1995	1541	4841		22°17,125'N	114°04,865'E
Zulu Coast MV (+1953)			south-african	cargo ship	motor vessel (diesel)	ran aground (wrecked)	1934	1953	354	369		31°10,9'S	17°46,2'E

- BELGIUM**
 N.V. (Naamloze Venootschap): ≈ p.l.c. (UK)
 SA, S.A. (Société Anonyme): ≈ p.l.c. (UK)
- DENMARK**
 A/S (Aktieselskab): ≈ p.l.c. (UK).
- FRANCE**
 SA, S.A. (Société anonyme): ≈ public limited company (p.l.c.) (UK)
- GERMANY**
 AG, A.G. (Aktiengesellschaft): ≈ p.l.c. (UK).
 GmbH, G.m.b.h. (Gesellschaft mit beschränkter Haftung): ≈ Ltd. (UK).
- ITALY**
 S.p.A. (Società per Azioni): ≈ p.l.c. (UK)
 S.r.l., Srl, S.R.L. (Società a responsabilità limitata): ≈ Ltd. (UK)
- JAPAN**
 株式会社 (kabushiki-kaisha or kabushiki-gaisha, "K.K.") - "stock company", typical form of business corporation
 有限会社 (yūgen-kaisha or yūgen-gaisha, "Y.K.") - "limited company", a close corporation form for smaller businesses
 合同会社 (gōdō-kaisha or gōdō-gaisha, "G.K.") - "amalgamated company", a close corporation form similar to the American LLC
 合資会社 (gōshi-kaisha or gōshi-gaisha, "GSK") - corporation similar to a limited partnership
 合名会社 (gōmei-kaisha or gōmei-gaisha, "GMK") - corporation similar to a general partnership
- NETHERLANDS**
 N.V. (Naamloze Venootschap): ≈ p.l.c. (UK). The name means "nameless company".
 B.V. (Besloten Venootschap): ≈ Ltd. (UK). The name means "secluded company".
- NORWAY**
 AS, A/S (Aksjeselskap): ≈ Ltd. (UK).
- PORTUGAL**
 Lda. (Limitada): ≈ Ltd. (UK)
 S.A. (Sociedade Anónima): ≈ p.l.c. (UK).
- SPAIN**
 S.A. (Sociedad Anónima): ≈ p.l.c. (UK).