

001. Dyfed gravel-tempered ware



002. North-Devon gravel-tempered ware



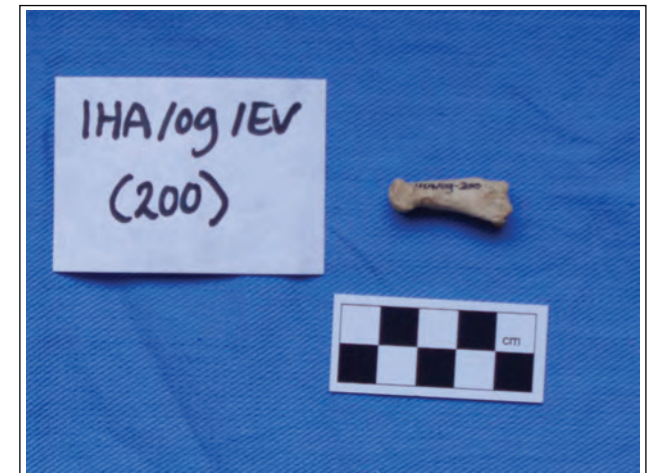
003. Medieval Earthenware jug handle



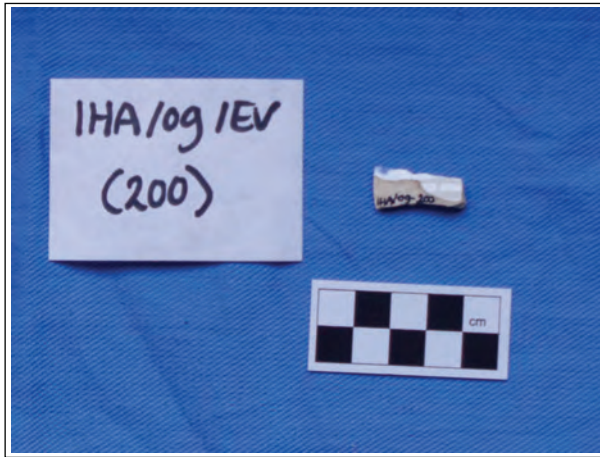
004. Post-medieval (C19-C20th) glazed Earthenware



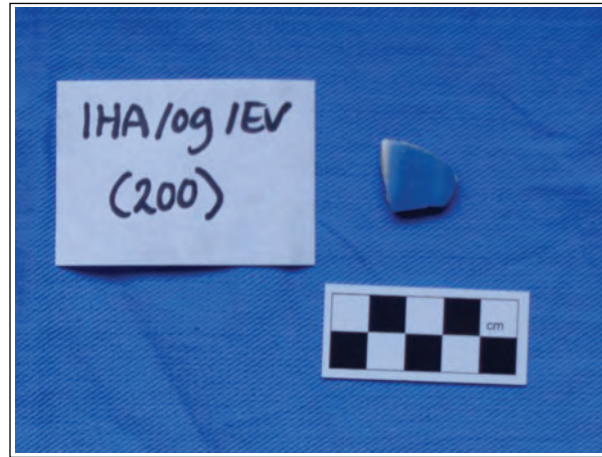
005. Ceramic Building Material



006. Animal bone



007. China/IPWW



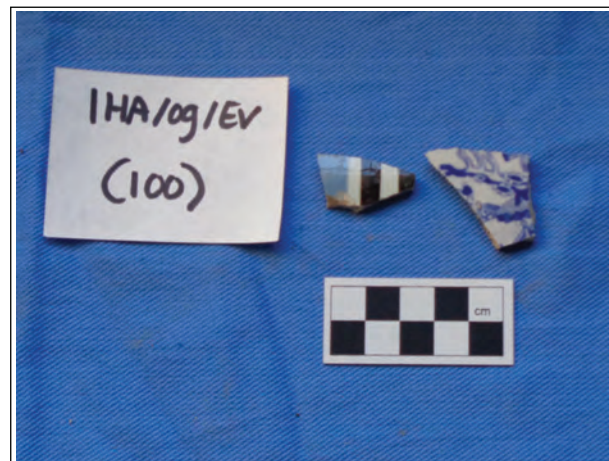
008. China/IPWW



009. Dyfed gravel-tempered ware



010. Post-medieval glazed Earthenware (C19)



011. China/IPWW



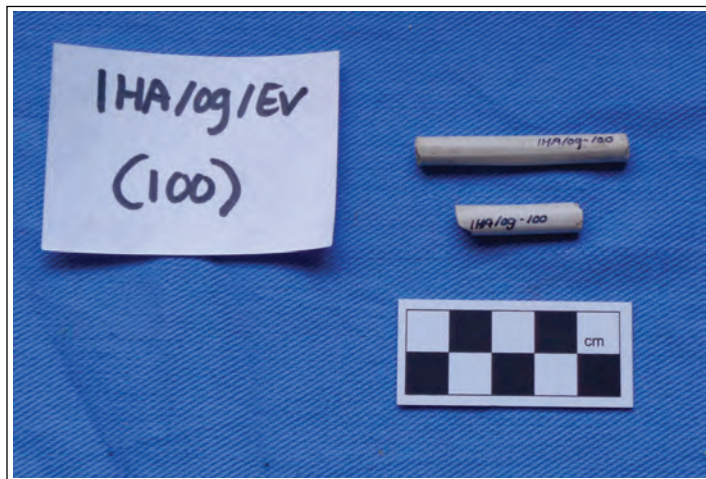
012. Post-medieval Earthenware



013. China/IPWW



014. Post-medieval glazed Earthenware



015. Tobacco Clay-pipe stems



016. Animal bone