

*eas*

*Engineering Archaeological Services Ltd.*

# Capel Hermon, Llandrillo, Denbighshire: Photographic Survey



**Capel Hermon, Llandrillo,  
Denbighshire  
Photographic Survey**

**I.P. Brooks**

*EAS Client report 2019/01*

**Project Commissioned**

**by**

**Rhys Llwyd Davies**

**on behalf of**

**SPeaR Associates Ltd**

**Fieldwork**

**by**

**I.P. Brooks**

**Engineering Archaeological Services Ltd.**

**Capel Hermon, Llandrillo,  
Denbighshire  
Photographic Survey**

**I.P. Brooks**

***EAS Client report 2019/01***

**registered in England**

**No 2869678**

## **CONTENTS**

### ***Introduction:***

***NGR***

***Status***

***Location and Topography***

***Background***

***SUMMARY***

### ***Methodology:***

***Results***

***Acknowledgments***

***Appendix 1: Photographs in the Archive***

### ***Figures***

***Figure 1: Location***

***Figure 2: Photogrammetric elevation***

***Figure 3: Location of the photographs (External)***

***Figure 4: Location of the photographs (Ground Floor)***

***Figure 5: Location of the photographs (First Floor)***

### ***Plates***

***Plate 1: Capel Hermon looking east***

***Plate 2: Capel Hermon, looking north west***

***Plate 3: Front elevation***

***Plate 4: North western elevation***

***Plate 5: Rear Elevation***

***Plate 6: South eastern face looking south west***

***Plate 7: Gate***

***Plate 8: Detail of front door***

***Plate 9: Flanking windows on the front elevation***

***Plate 10: Location of the bench mark***

***Plate 11: Detail of bench mark***

***Plate 12: Enclosure around the access to the cellar***

***Plate 13: Steps down to the cellar***

***Plate 14: Toilet blocks looking south east***

***Plate 15: Toilet blocks looking north west***

***Plate 16: Window between the lobby and the nave***

***Plate 17: Lobby looking south east***

*Plate 18: Lobby looking north west*  
*Plate 19: Ceiling rose in the lobby*  
*Plate 20: Moulded consoles defining the stairways to the balcony*  
*Plate 21: Detail of moulding on the terminal of the handrails*  
*Plate 22: View of the organ and pulpit from the gallery*  
*Plate 23: View across the ground floor of the nave, looking north*  
*Plate 24: Detail of pew end*  
*Plate 25: Detail of cast iron pillar supporting the gallery*  
*Plate 26: Rail around the sanctuary*  
*Plate 27: Pulpit looking north west*  
*Plate 28: Pulpit looking north east*  
*Plate 29: Steps up to the pulpit*  
*Plate 30: Steps to the "organ loft"*  
*Plate 31: Piano in front of the sanctuary*  
*Plate 32: Gallery, looking east*  
*Plate 33: Gallery, looking south*  
*Plate 34: Stained glass windows in south western gable.*  
*Plate 35: Light fitting above the nave*  
*Plate 36: Nave ceiling*  
*Plate 37: Detail of ceiling rose above the nave*  
*Plate 38: Southern door to the gallery*  
*Plate 39: Northern door to the gallery*  
*Plate 40: Roof structure*  
*Plate 41: Sunday School room, looking south east*  
*Plate 42: Sunday School room, looking north west*  
*Plate 43: Internal "porch" in the Sunday School room*  
*Plate 44: Coat hooks in the Sunday School room*  
*Plate 45: Organ mechanism*  
*Plate 46: Organ pump handle in the Sunday School Room*  
*Plate 47: Organ pump handle in the vestry*  
*Plate 48: Brass plaque on the side of the organ*  
*Plate 49: Fireplace in the Sunday School room*  
*Plate 50: Remnant of the previous decorative scheme in the Sunday School Room*  
*Plate 51: Iron plate between the Sunday School room and the nave*  
*Plate 52: Vestry, looking east*  
*Plate 53: Vestry, looking west*  
*Plate 54: Fireplace in the vestry*  
*Plate 55: Fragment of previous decorative scheme in the vestry*  
*Plate 56: Pump organ in the vestry*  
*Plate 57: Dish cover*  
*Plate 58: Dinner plate*  
*Plate 59: Tea plate and cup*  
*Plate 60: Cup*  
*Plate 61: Cellar, looking east*  
*Plate 62: Cellar looking north west*  
*Plate 63: Cellar looking south east*



## **Introduction**

<b>Grid Reference:</b>	<b>SJ 03330 37157</b>
<b>Listed Building No.</b>	<b>Not listed</b>
<b>NPRN</b>	<b>8447</b>
<b>PRN</b>	<b>CPAT89048</b>

## **Location**

Capel Hermon is located on the western side of the village of Llandrillo, Denbighshire, fronting onto High Street (B4401) (Figure 1, Plates 1).

## **Background**

It is intended to convert the now disused chapel and as part of the planning process archaeological conditions were imposed on the development requiring a photographic survey equivalent to that outlined in Historic England 2016. *Understanding Historic Buildings. A Guide to Good Recording* p27.

Llandrillo Calvinist Methodist Chapel was built in 1880, in the Lombardic/Italian style, to the design of architect Richard Owens of Liverpool. The chapel has two-storeys, stone walls and a slate roof. (<http://www.welshchapels.org/search/nprn/8447>)

Prior to the construction of the chapel the site was occupied by a property called Erw llan and an associated arable field (<https://places.library.wales/browse/52.922/-3.438/17?page=1&alt=>)

## **Summary**

*A photographic survey of Capel Hermon, Llandrillo, Denbighshire took place on 10<sup>th</sup> January 2019.*

*Gwnaed arolwg ffotograffeg o Gapel Hermon, Llandrillo, Sir Ddinbych ar y 10fed Ionawr 2019.*

## Methodology

A series of photographs of Capel Hermon were taken with a Nikon D5300 Digital SLR Camera at a resolution of 24.2 MP with the photographs being taken in RAW (NEF) format. These photographs were converted into JPEG format for use as illustration in this report and TIFF for archiving. Where suitable the photographs included a metric scale. The selection of the photographs was based on the recommendations of English Heritage 2016 *Understanding Historic Buildings. A guide to good recording practice*.

The opportunity was also taken to take a series of overlapping digital photographs which were processed using Agisoft Photoscan to produce a three-dimensional model of the building from which the photogrammetric elevation (Figures 2) could be extracted.

The field work took place on 10<sup>th</sup> January 2019

The archive will be deposited with the Royal Commission on the Ancient and Historical Monuments of Wales. The location and direction of the photographs in this archive are shown on Figures 3 – 5 and are summarised in Appendix 1.

This report contains a selection of the photographs within the full archive.

## Results

Capel Hermon is set slightly back from High Street, Llandrillo, Denbighshire towards the western side of the village (Plates 1 – 2). The enclosure containing the building is entered through a double gateway with a cast iron arch (Plates 3 and 7) and has its most developed façade facing the street. The chapel consists of a stone-built, two-storey range with a single storied range to the rear of the building containing the vestry and Sunday school (Plates 4 – 6). The front façade has a triple widow, held in blind arches and with circular windows within the arches, above the main door (Plate 8). Flanking this are double height widows with arched tops (Plate 9).

The south western elevation (Plate 4) included a bench mark near to the south western corner of the building (Plates 10 and 11) and a fenced enclosure defining the steps down to the cellar door near to the north western corner (Plates 12 and 13). At the rear of the plot are two, brick-built toilet blocks (Plates 14 and 15) which are clearly later than the chapel itself and are from different phases of construction.

The main entrance to the chapel is through the double doors in the front elevation, this gives access to a lobby (Plates 16 – 18) which, in turn, gives access to the two doors to the nave and two stair cases leading to the gallery. The lobby has a patterned tile floor, a decorative ceiling rose (Plate 19) and contains a stained-glass window between the lobby and the nave of the chapel (Plate 16). For this window to give light to the main body of the chapel the front doors would have had to be left open. On either side of the lobby are stair cases leading to the balcony or gallery of the chapel, which are partly defined by moulded plaster consoles (Plate 20). They also have carved handrails with spiral terminals (Plate 21).

The main body of the chapel consists of two storied space with a gallery running along three sides of the nave. The north eastern end of the space contains the organ and pulpit (Plate 22) which are contained within a sanctuary defined by a wooden rail (Plate 26). The main body of the nave (Plate 23) contains a series of pews each of which has a carved end on which is

printed a “row number” (Plate 24). Also, within this space are a series of cast iron pillars with acanthus decorated capitals which supports the gallery above (Plate 25).

The sanctuary contains the pulpit (Plates 28 and 28) in the Arts and Crafts style which is accessed by means of a short stair case (Plate 29) on the southern side of sanctuary. The “organ loft” is accessed by a similar set of steps (Plate 30) on the other side of the sanctuary, however, the space is very limited such that there is no space for a seat in the organ loft which must have been played whilst standing. Outside the sanctuary is an upright piano (Plate 31).

The gallery (Plate 32) has two rows of pews on either side of the chapel and four rows across the south western gable end (Plate 33) all of which are raked so that all of the congregation could see the pulpit. Lighting the south western gable are three circular windows (Plate 34) which contain glass stained yellow and blue. There is a surviving four light chandelier which springs from a plaster rose decoration in the ceiling (Plate 37). This is one of four ceiling roses which are within a coffered ceiling design (Plate 36). Access to the gallery is through one of two doors placed at either end of the south western gable (Plates 38 and 39). A small hatch in the south eastern corner of the chapel gives access to the roof space (Plate 40). Each of the trusses have three posts braced by raking struts.

The single storied space behind the sanctuary contains two room, a slightly larger room to the north, is assumed to be the Sunday School and a smaller room, to the south, which is assumed to have been the Vestry. These two rooms are separated by a simple wooden partition. The Sunday School (Plates 41 and 42) contains a series of wooden benches with backs which can be moved so that the direction of the seating can be changed. In the north western corner of the room is an internal “porch” which gives access to the back door of the chapel (Plate 43). Immediately adjacent to this “porch” is a coat rack (Plate 44), which also continues onto the back of the “porch”. The back of the organ dominates the south western corner of the room (Plate 45) with what is assumed to be a later electric bellows above. The original pump handle for the organ extends through the wall between the Sunday School and the Vestry (Plates 46 and 47). There is also a brass plaque on the side of the organ case (Plate 48) which reads:

Cyflwynwyd y peiriant uchod yn 1968  
er Cōf am  
THOMAS FRANCIS JONES. Branas Lodge  
(blaeor 1908 – 1933)  
a’i briod CATHERINE JONES  
a’u mab  
THOMAS JOHN JONES. Branas Lodge  
(blaenor 1958 – 1967)  
a’l briod Ethel Jones

This would suggest that the organ was converted from a hand pumped instrument to an electrically blown instrument as late as 1968. There is also a cast iron fireplace on the north eastern wall. In the corner of the room a fragment of a previous decorative scheme is exposed (Plate 50). This is similar to that exposed in the vestry (Plate 55) which has a frieze of stencilled floral pattern. In the doorway between the Sunday School and the nave is a cast iron plate (Plate 51) of unknown function.

The Vestry (Plates 52 – 53) also has a cast iron fireplace in its north eastern corner (Plate 54) and it contains a small pump organ (Plate 56). Also, within the Vestry and a series of ceramic items all of which have a transfer print of the chapel. This is assumed to be part of a dinner service as a dish lid, dinner plate, side plate and cup (Plates 57 – 60) were recorded. It is likely that these were made as part of a commemoration within the chapel.

The cellar (Plates 61 and 62) are access from the outside, down a short flight of steps within a fenced enclosure (Plates 12 and 13). The cellar has a brick floor and contains the heating boiler, although this is clearly a modern boiler, presumably replacing an earlier coal fired boiler. There is also a brick patch in the south eastern corner of the cellar suggesting there may have been a vent leading to the chapel itself (Plate 63).

### **Acknowledgements**

The project was commissioned by Rhys Llwyd Davies on behalf of the SPeaR Associates Ltd. He also kindly supplied digital copies of the survey of the chapel carried out by Curvasure Ltd.

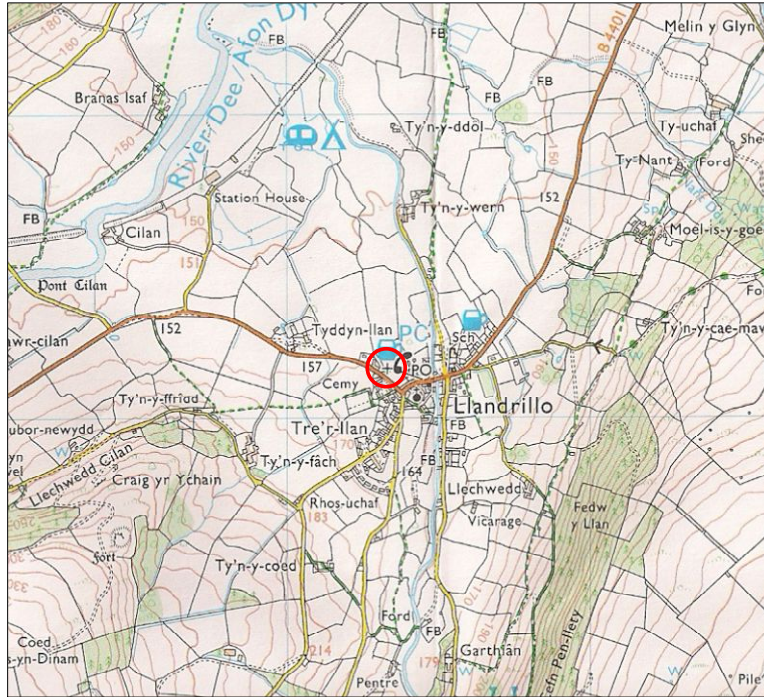


Figure 1: Location  
Scale 1:25,000

Reproduced from the Explorer™ 255, 1:25,000 scale  
by permission of the Ordnance Survey ® on behalf of  
The Controller of Her Majesty's Stationary Office  
© Crown Copyright 2000  
All Rights Reserved Licence Number AL 100014722



Figure 2: Photogrammetric Elevation  
Scale 1:100

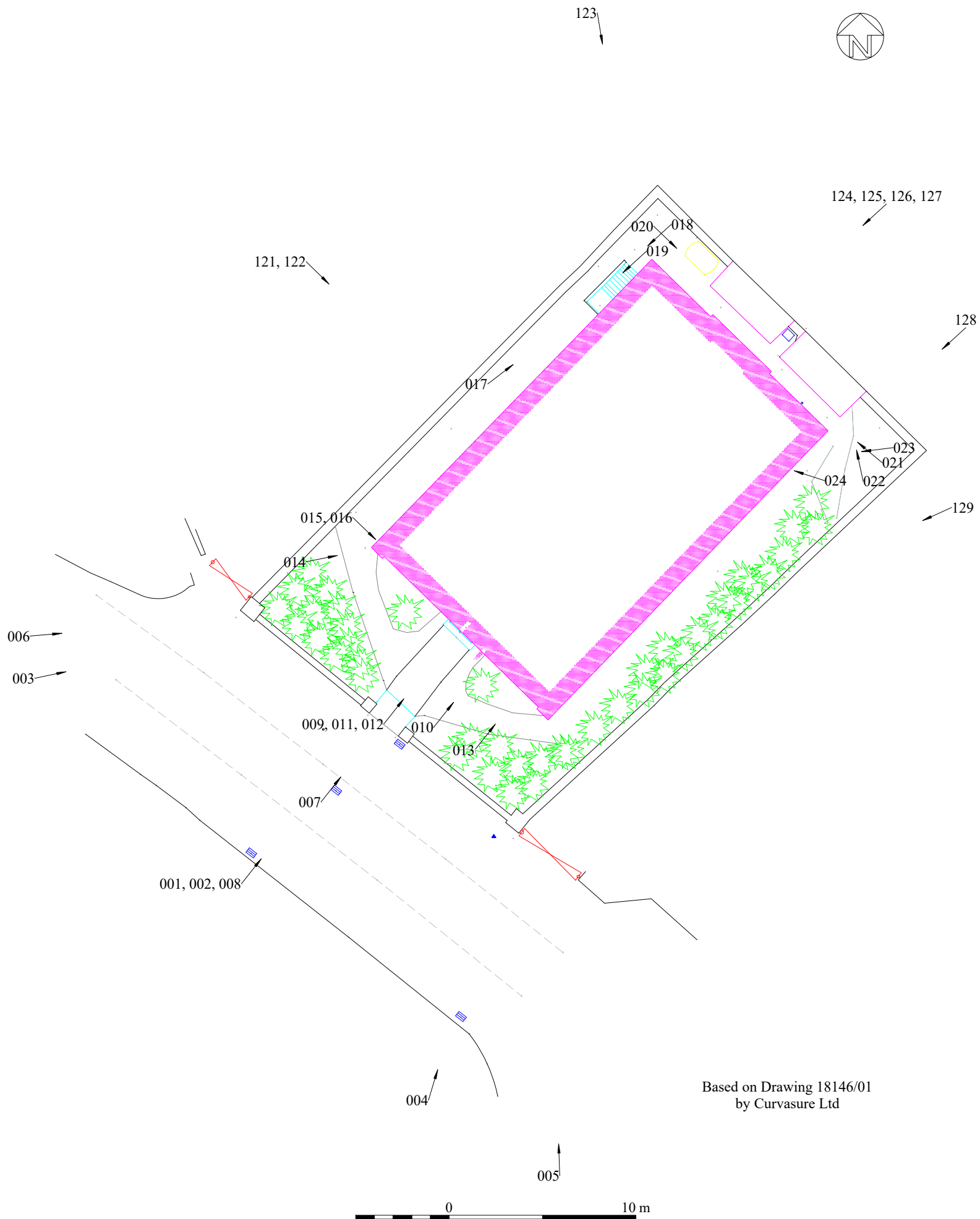


Figure 3: Location of the photographs in the archive  
 (External)  
 Scale 1:250



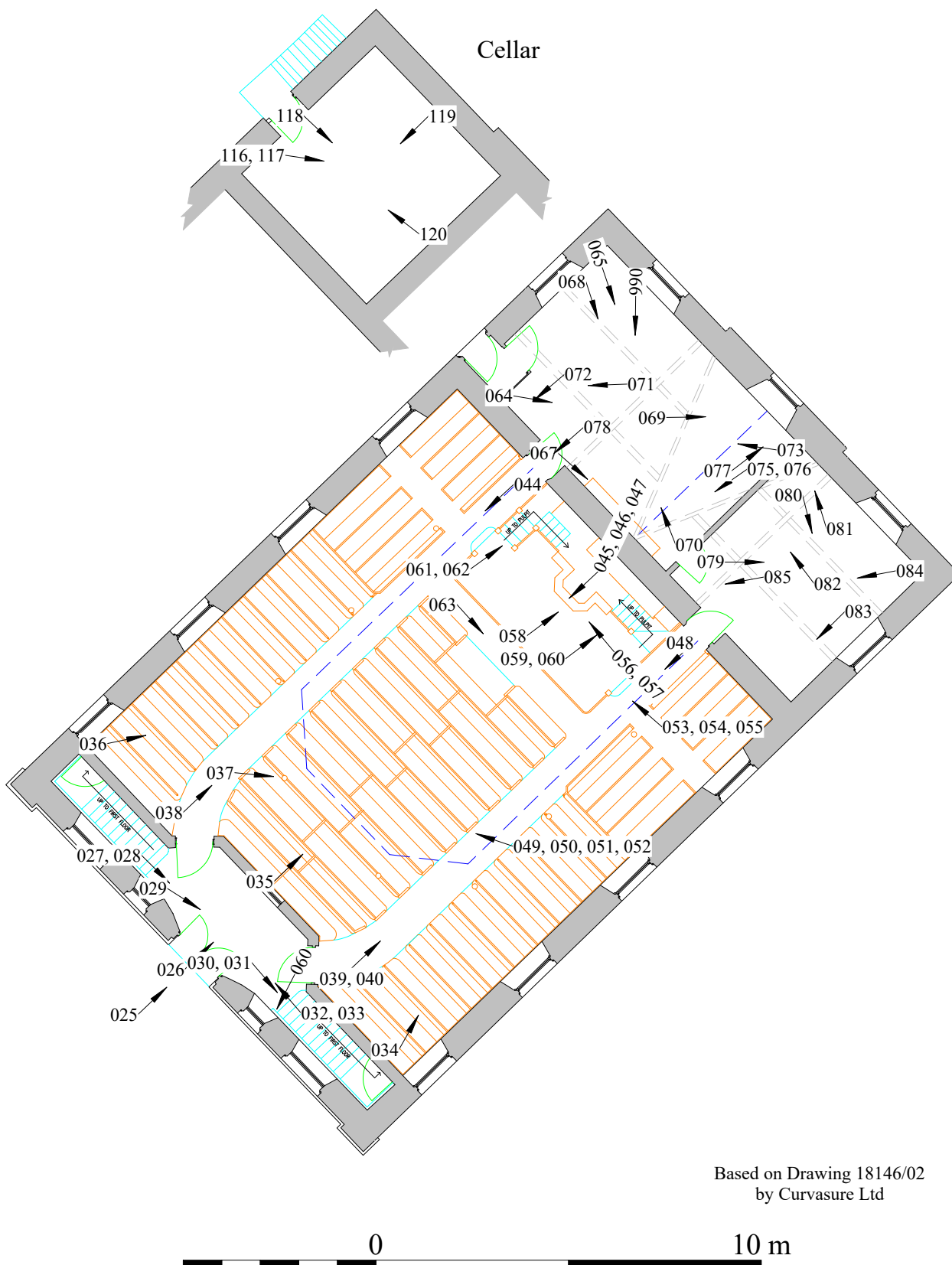
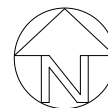


Figure 4: Location of the photographs in the archive  
(Ground Floor)  
Scale 1:150



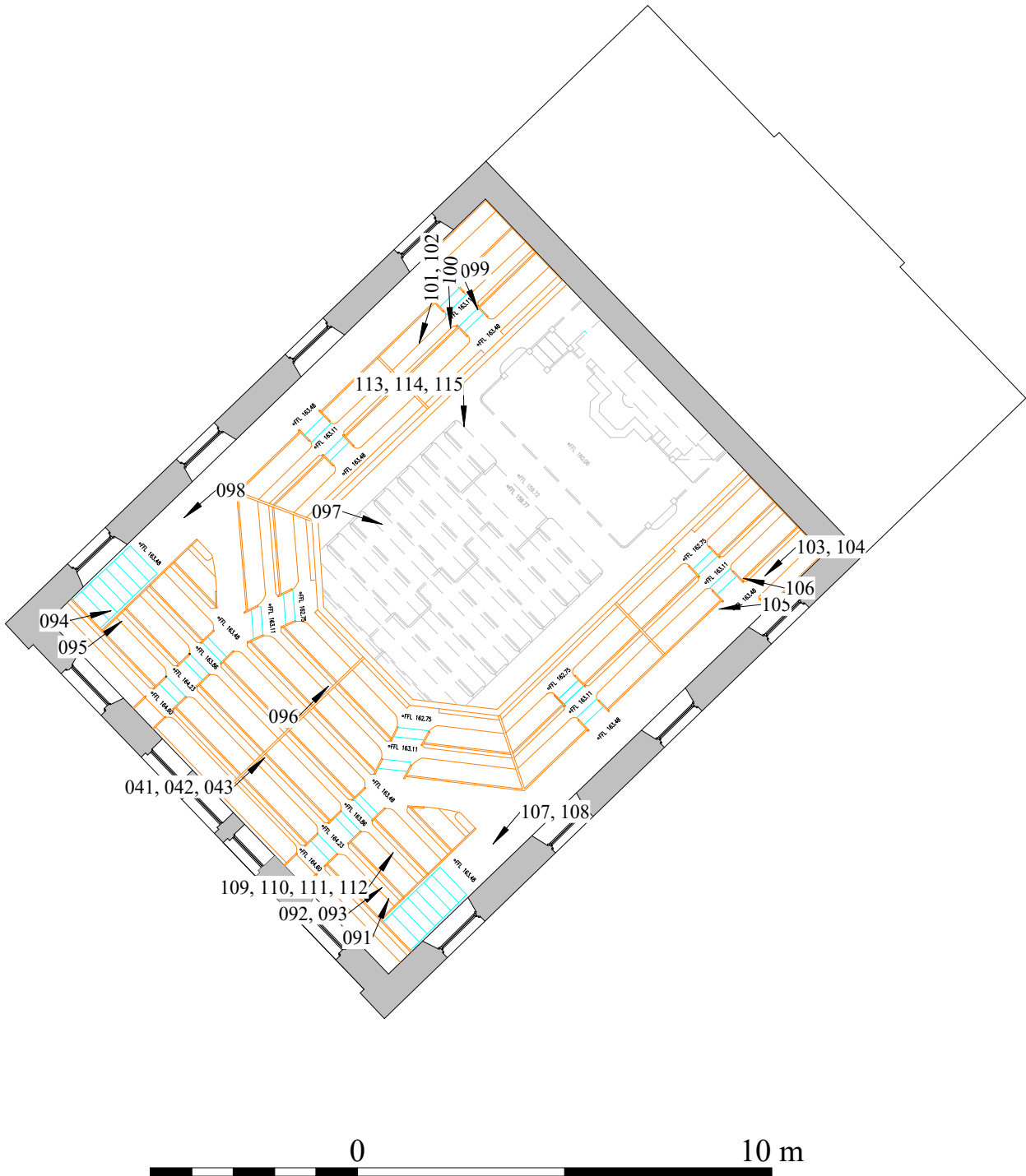


Figure 5: Location of the photographs in the archive  
(First Floor)  
Scale 1:150



Plate 1: Capel Hermon looking east



Plate 2: Capel Hermon, looking north west





Plate 3: Front elevation



Plate 4: North western elevation





Plate 5: Rear Elevation



Plate 6: South eastern face looking south west





Plate 7: Gate



Plate 8: Detail of front door



Plate 9: Flanking windows on the front elevation



Plate 10: Location of the bench mark





Plate 11: Detail of bench mark



Plate 12: Enclosure around the access to the cellar





Plate 13: Steps down to the cellar



Plate 14: Toilet blocks looking south east





Plate 15: Toilet blocks looking north west



Plate 16: Window between the lobby and the nave

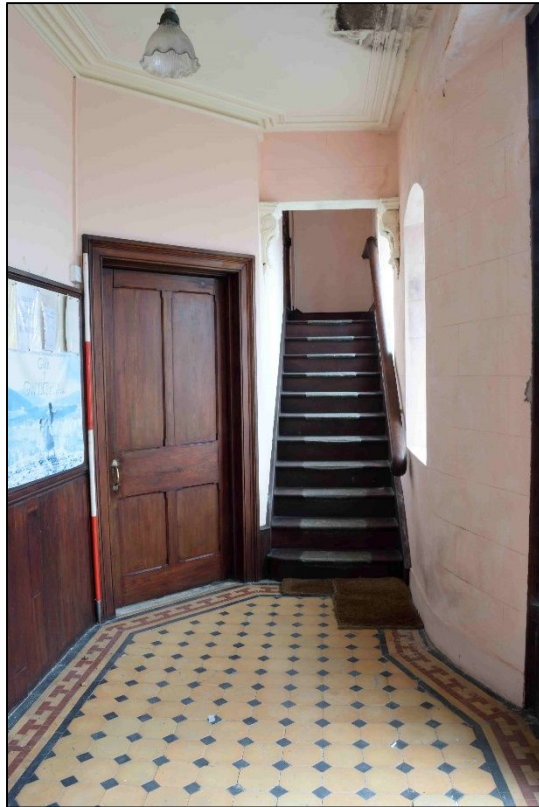


Plate 17: Lobby looking south east



Plate 18: Lobby looking north west



Plate 19: Ceiling rose in the lobby

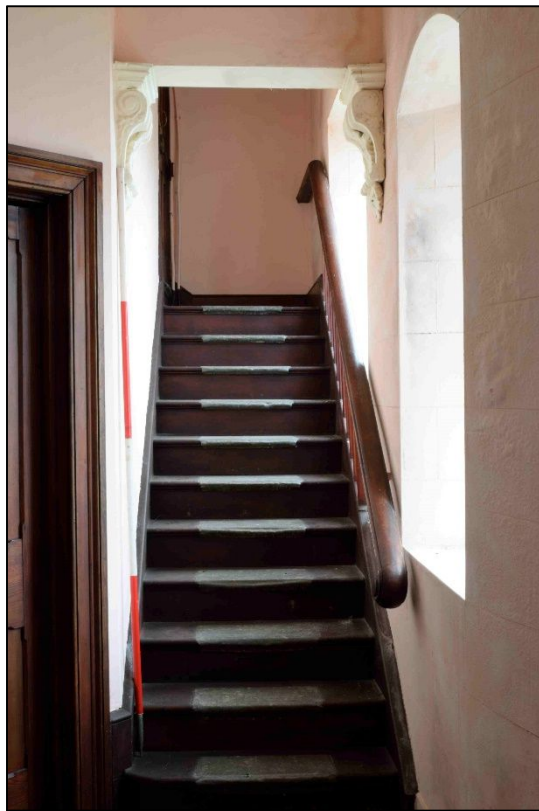


Plate 20: Moulded consoles defining the stairways to the balcony



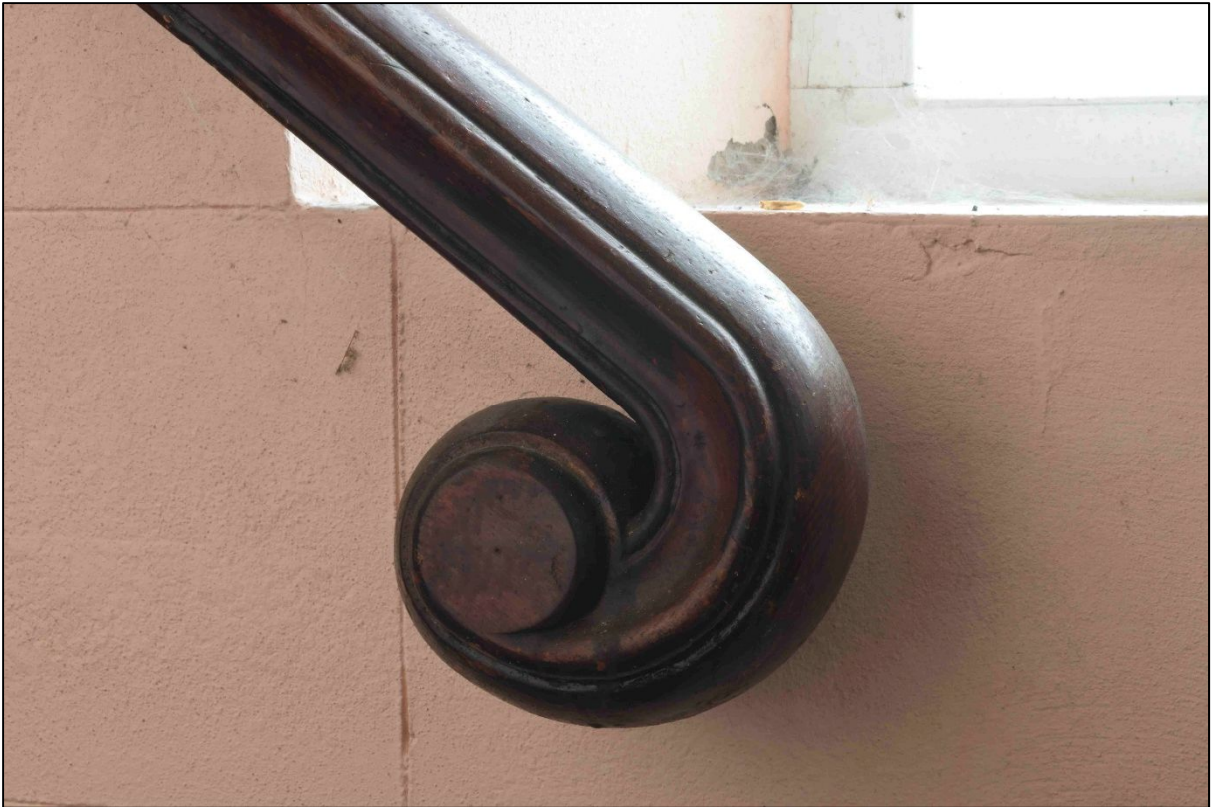


Plate 21: Detail of moulding on the terminal of the handrails



Plate 22: View of the organ and pulpit from the gallery



Plate 23: View across the ground floor of the nave, looking north



Plate 24: Detail of pew end



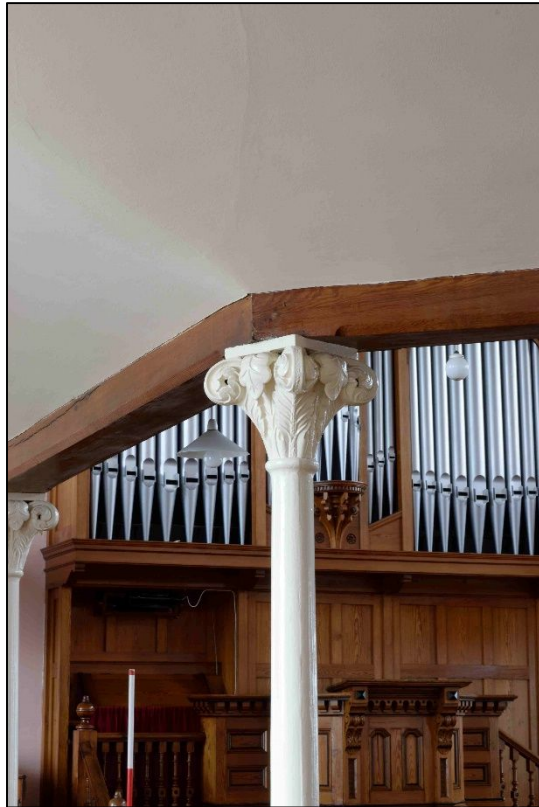


Plate 25: Detail of cast iron pillar supporting the gallery

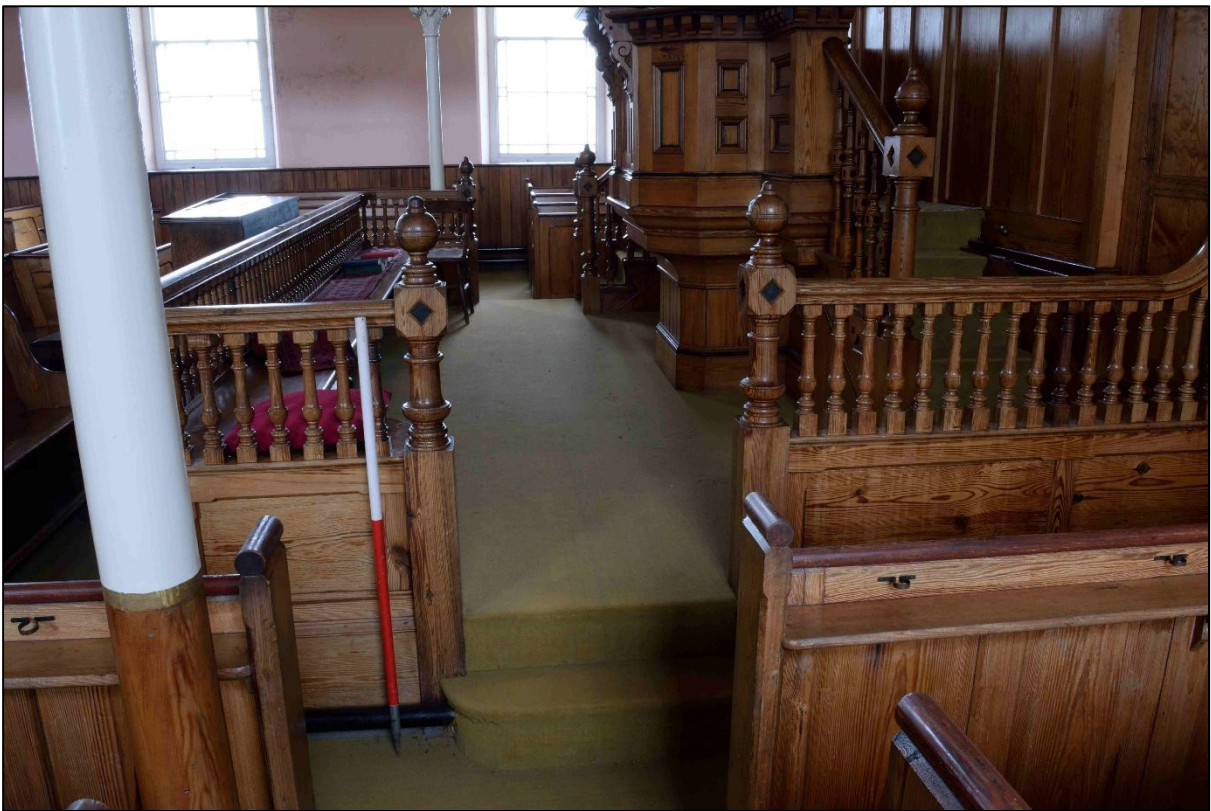


Plate 26: Rail around the sanctuary



Plate 27: Pulpit looking north west



Plate 28: Pulpit looking north west





Plate 29: Steps up to the pulpit



Plate 30: Steps to the “organ loft”





Plate 31: Piano in front of the sanctuary



Plate 32: Gallery, looking east





Plate 33: Gallery, looking south



Plate 34: Stained glass windows in south western gable.



Plate 35: Light fitting above the nave

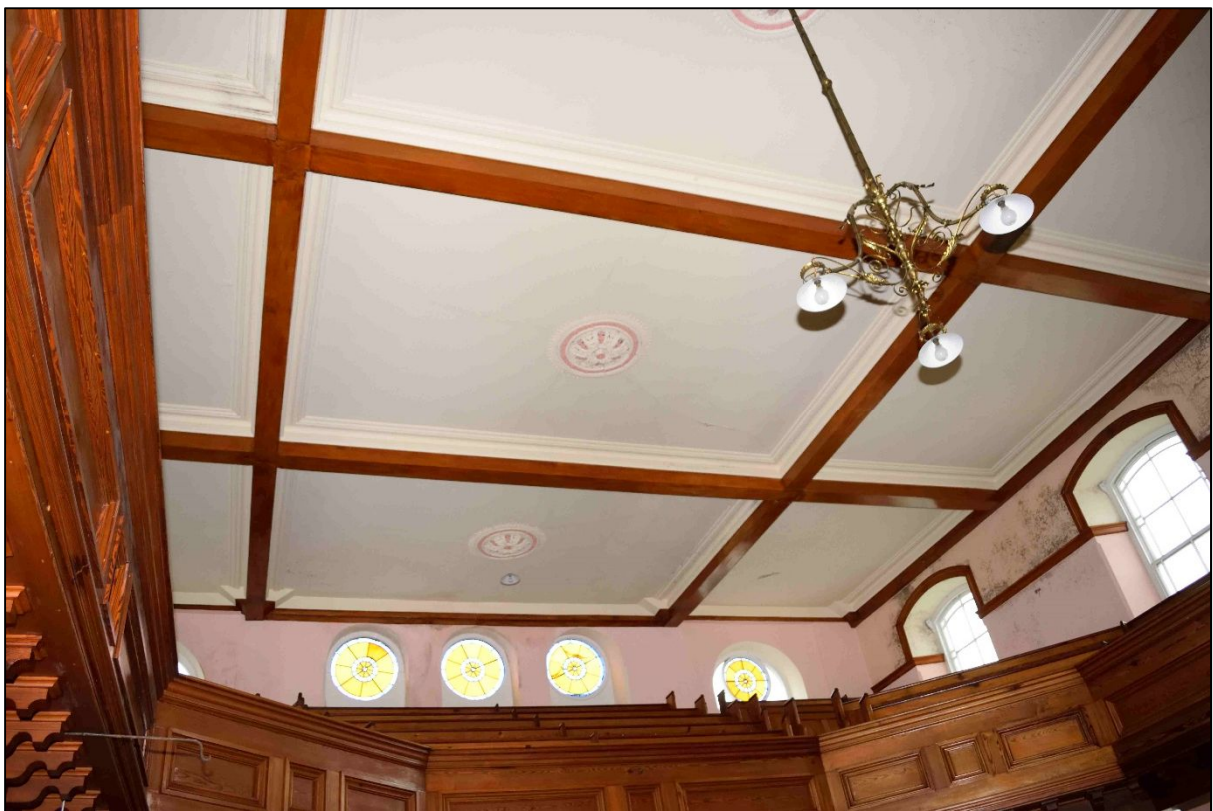


Plate 36: Nave ceiling





Plate 37: Detail of ceiling rose above the nave

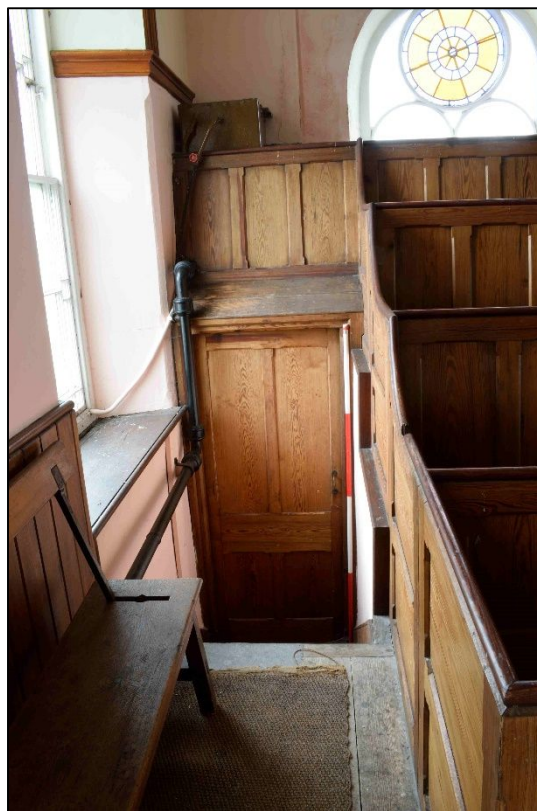


Plate 38: Southern door to the gallery



Plate 39: Northern door to the gallery



Plate 40: Roof structure





Plate 41: Sunday School room, looking south east



Plate 42: Sunday School room, looking north west

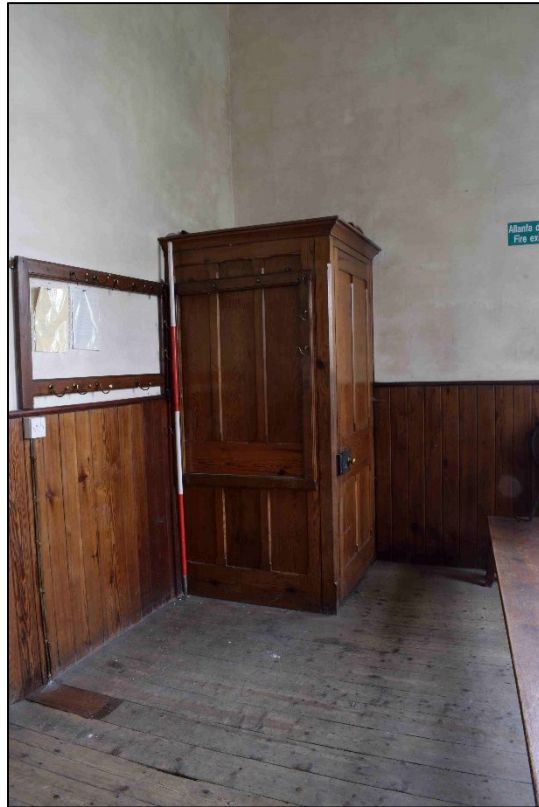


Plate 43: Internal “porch” in the Sunday School room

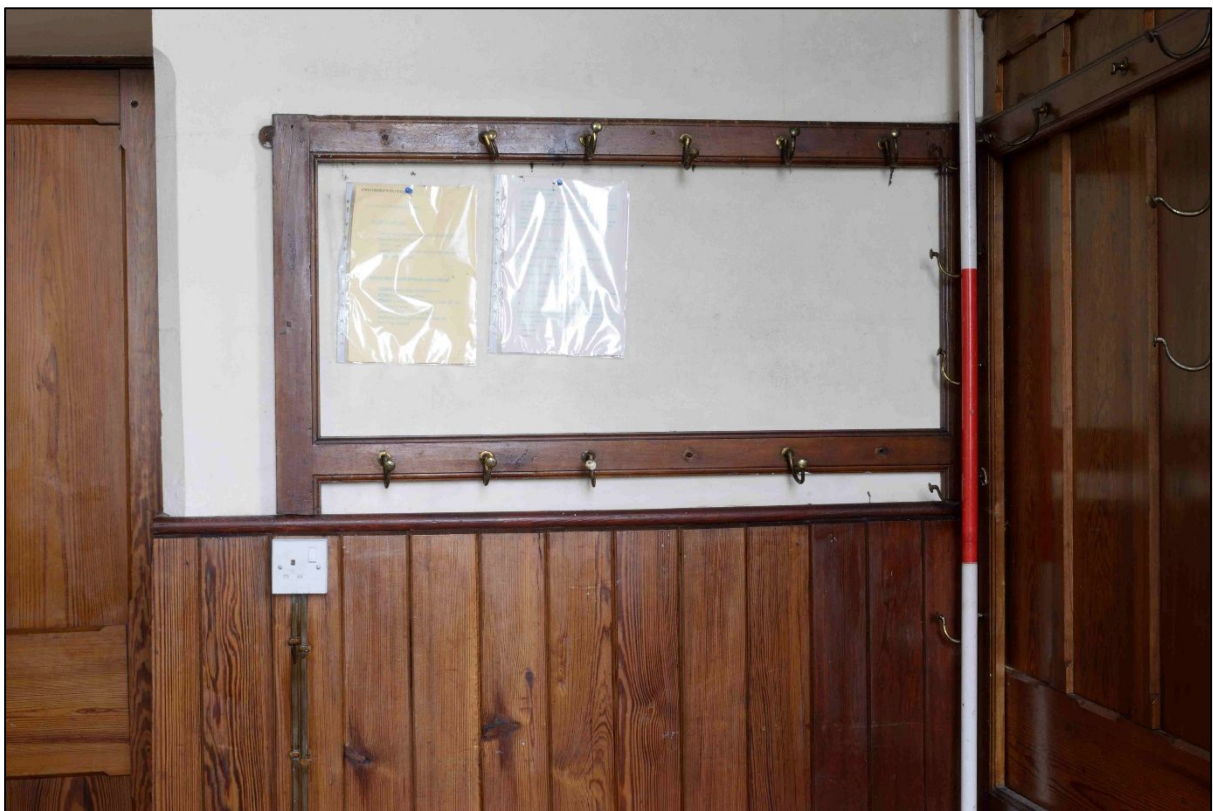


Plate 44: Coat hooks in the Sunday School room





Plate 45: Organ mechanism



Plate 46: Organ pump handle in the Sunday School Room





Plate 47: Organ pump handle in the vestry



Plate 48: Brass plaque on the side of the organ



Plate 49: Fireplace in the Sunday School room



Plate 50: Remnant of the previous decorative scheme in the Sunday School Room





Plate 51: Iron plate between the Sunday School room and the nave



Plate 52: Vestry, looking east



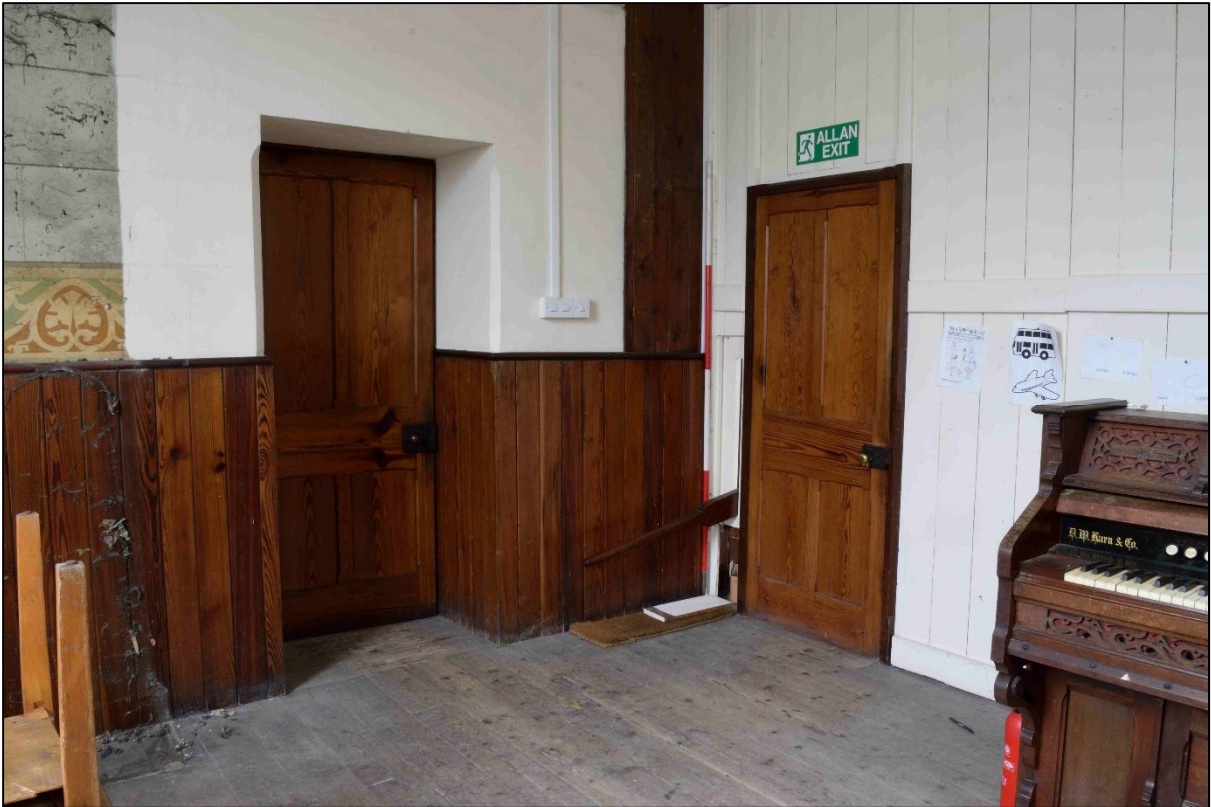


Plate 53: Vestry, looking west



Plate 54: Fireplace in the vestry





Plate 55: Fragment of previous decorative scheme in the vestry



Plate 56: Pump organ in the vestry



Plate 57: Dish cover



Plate 58: Dinner plate





Plate 59: Tea plate and cup



Plate 60: Cup





Plate 61: Cellar, looking east

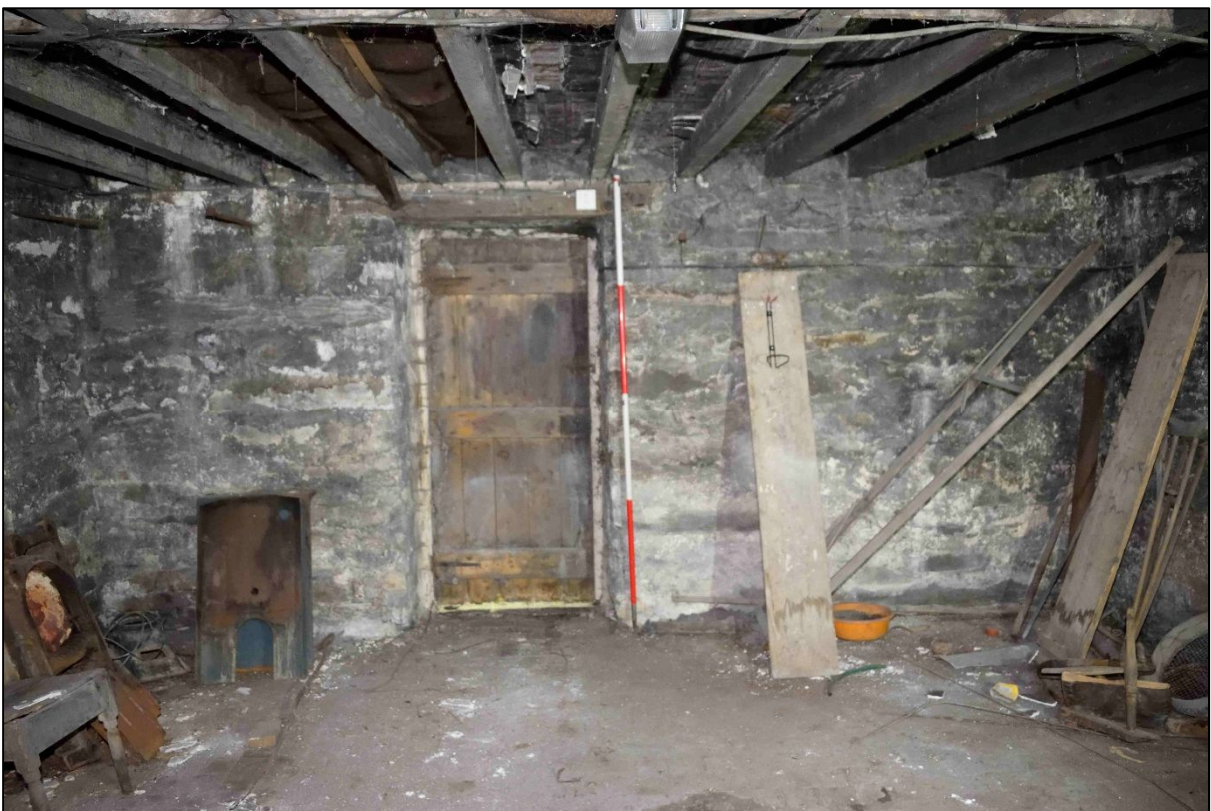


Plate 62: Cellar looking north west





Plate 63: Cellar looking south east.

## Appendix 1: Photographs in the Archive

Filename	Description of file's content
CHL.001	Front elevation
CHL.002	Front elevation
CHL.003	External appearance looking east
CHL.004	External appearance looking north
CHL.005	General view of chapel in its setting, looking NE
CHL.006	General view of chapel in its setting, looking E
CHL.007	Gate in front of chapel
CHL.008	Front elevation
CHL.009	Front door
CHL.010	SW side of front elevation
CHL.011	Central section of front elevation
CHL.012	Central section of front elevation
CHL.013	Detail of lower window in SW section of front elevation
CHL.014	Location of the bench mark
CHL.015	Bench mark
CHL.016	Bench mark
CHL.017	Access to the cellar, looking NW
CHL.018	Access to the cellar, looking SE
CHL.019	Steps down to the cellar
CHL.020	Toilet blocks looking SW
CHL.021	Toilet blocks looking NE
CHL.022	Toilet block looking NE
CHL.023	SW elevation, looking SE
CHL.024	Window in SW elevation into the vestry
CHL.025	Front entrance with the doors open
CHL.026	Window between the lobby and the nave
CHL.027	Lobby looking SW
CHL.028	Lobby looking SW
CHL.029	Ceiling rose in the lobby
CHL.030	South western stairs from the lobby
CHL.031	South western stairs from the lobby
CHL.032	Lobby looking NE
CHL.033	Lobby looking NE
CHL.034	Ground floor of nave from SW corner
CHL.035	Ground floor of nave looking NW
CHL.036	Ground floor of nave from NE corner
CHL.037	Detail of capital to column supporting the balcony
CHL.038	Ground floor of nave looking NW (northern aisle)
CHL.039	Ground floor of nave looking NW (southern aisle)
CHL.040	Ground floor of nave looking NW (southern aisle)
CHL.041	View of pulpit and organ from the balcony
CHL.042	View of pulpit and organ from the balcony
CHL.043	View of pulpit and organ from the balcony

<b>Filename</b>	<b>Description of file's content</b>
CHL.044	Ground floor looking SE along the northern aisle
CHL.045	Ground floor looking SE (central section)
CHL.046	Ground floor looking SE (central section)
CHL.047	Ground floor looking SE (central section)
CHL.048	Ground floor, looking SE along southern aisle
CHL.049	Detail of pew end
CHL.050	Detail of pew end
CHL.051	Detail of pew end
CHL.052	Detail of pew end
CHL.053	Entrance to the sanctuary
CHL.054	Detail of moulding to entrance to the sanctuary
CHL.055	Detail of moulding to entrance to the sanctuary
CHL.056	Pulpit looking NE
CHL.057	Pulpit looking NE
CHL.058	Pulpit looking NW
CHL.059	Stairs to the pulpit
CHL.060	Stairs to the pulpit
CHL.061	Stairs to the "organ loft"
CHL.062	Stairs to the "organ loft"
CHL.063	Piano in front of the sanctuary, looking SW
CHL.064	Sunday school room looking SSE
CHL.065	Sunday school room looking south
CHL.066	Organ chamber and works in the Sunday School room
CHL.067	Brass plaque on side of organ
CHL.068	Truss in the Sunday School room
CHL.069	Fireplace in the Sunday School room
CHL.070	Sunday School room looking north
CHL.071	Internal porch in Sunday School room
CHL.072	Coat pegs in the Sunday School room
CHL.073	Sunday School room looking NE
CHL.075	Organ pump arm in the Sunday School Room
CHL.076	Organ pump arm in the Sunday School Room
CHL.077	Fragment of previous decorative order in the Sunday School room
CHL.078	Floor vent between the Sunday School room and the Nave
CHL.079	Vestry looking WSW
CHL.080	Vestry looking SW
CHL.081	Fireplace in NW corner of the Vestry
CHL.082	Pump organ in the Vestry
CHL.083	Fragment of previous decorative order in the Vestry
CHL.084	Vestry looking east
CHL.085	Pump handle to the main organ in the vestry
CHL.086	Dish cover
CHL.087	Dinner plate
CHL.088	Cup and saucer
CHL.089	Cup



<b>Filename</b>	<b>Description of file's content</b>
CHL.090	Detail of moulding on the handrail in the lobby
CHL.091	View across the chapel from the south eastern corner of the balcony looking north
CHL.092	View across the chapel from the south eastern corner of the balcony looking NE
CHL.093	View across the chapel from the south eastern corner of the balcony looking NE
CHL.094	View across the chapel from the south western corner of the balcony looking east
CHL.095	View across the chapel from the south western corner of the balcony looking north east
CHL.096	View across the chapel from the centre of the southern balcony
CHL.097	Detail of the light fitting
CHL.098	Northern door to the balcony
CHL.099	View across the chapel at first floor level looking SE
CHL.100	View across the chapel at first floor level looking S
CHL.101	View of circular windows in the south western end of the chapel
CHL.102	View of circular windows in the south western end of the chapel
CHL.103	View of circular windows in the south western end of the chapel
CHL.104	View of circular windows in the south western end of the chapel
CHL.105	View across the chapel at first floor level looking NW
CHL.106	View across the chapel at first floor level looking west
CHL.107	Southern door to the balcony
CHL.108	Southern door to the balcony
CHL.109	Roof structure
CHL.110	Roof structure
CHL.111	Roof structure
CHL.112	Roof structure
CHL.113	Ceiling rose in the nave
CHL.114	Celling in the nave, looking up
CHL.115	Ceiling in the nave looking NE
CHL.116	Cellar looking east
CHL.117	Cellar looking east
CHL.118	Cellar looking SE
CHL.119	Cellar looking SW
CHL.120	Cellar looking NW
CHL.121	North western elevation
CHL.122	North western elevation
CHL.123	Chapel looking south
CHL.124	North eastern elevation
CHL.125	North eastern elevation
CHL.126	North eastern elevation
CHL.127	North eastern elevation
CHL.128	Chapel looking SW
CHL.129	Chapel looking WSW

<b>Filename</b>	<b>Description of file's content</b>
Elevation	Photogrammetric elevation of the front façade