

MOEL DDINAS, RHOSYGWALIA, Y BALA,

Cofnod Adeiladau Hanesyddol/
Historic Building Recording



Ymddiriedolaeth Archaeolegol Gwynedd
Gwynedd Archaeological Trust

MOEL DDINAS, RHOSYGWALIA, Y BALA

COFNOD ADEILADAU HANESYDDOL / HISTORIC BUILDING RECORDING

Rhif Cyfeirnod Cynradd Digwyddiad Cofnod yr Amgylchedd Hanesyddol /
Historic Environment Record Event Primary Reference Number: 46619

Rhif Prosiect / Project No. G2778

Rhif Adroddiad / Report No. 1705

Wedi'i baratoi ar gyfer / Prepared for: Mr & Mrs Ceri and Mark Katz

Ebrill 2023 / April 2023

Ysgrifenyddwyd gan / Written by: Robert Evans, Mike Woods and Jessie Baumgardner




Delwedd clawr blaen: Y fynedfa i Ystâd Ddiwydiannol Peblig (swyddfa ddiogelwch mewn blaendir) (cyfeirnod archif: G2778_057) /
Front cover image: Golygfa o'r safle yng nghyd-destun tirwedd ehangach gan gynnwys buarth y fferm (Archive reference: G2778_057)

Cyhoeddwyd gan Ymddiriedolaeth Archaeolegol Gwynedd
Ymddiriedolaeth Archaeolegol Gwynedd
Craig Beuno, Ffordd y Garth,
Bangor, Gwynedd, LL57 2RT

Published by Gwynedd Archaeological Trust
Gwynedd Archaeological Trust
Craig Beuno, Garth Road,
Bangor, Gwynedd, LL57 2RT

Cadeiryddes/Chair - Yr Athro/David Elis-Williams MA(Oxon), MSc, CPFA
Prif Archaeolegydd/Chief Archaeologist - Andrew Davidson, B.A., MCIfA

Mae Ymddiriedolaeth Archaeolegol Gwynedd yn Gwmni Cyfyngedig (Ref Cof. 1180515) ac yn Elusen (Rhif Cof. 508849)
Gwynedd Archaeological Trust is both a Limited Company (Reg No. 1180515) and a Charity (reg No. 508849)

Approvals Table				
	Role	Printed Name	Signature	Date
Originated by	Document Author	Jessie Baumgardner		25/04/2023
Reviewed by	Document Reviewer	Robert Evans		25/04/2023
Approved by	Principal Archaeologist	John Roberts		25/04/2023

Revision History			
Rev No.	Summary of Changes	Ref Section	Purpose of Issue

CONTENTS

CRYNHODEB ANHECHNEGOL	3
NON-TECHNICAL SUMMARY	3
1 INTRODUCTION.....	4
2 METHOD STATEMENT	6
2.1 Introduction.....	6
2.2 Photographic Record.....	6
2.3 Written Record.....	8
2.4 Drawn Record.....	8
2.5 Dissemination & Archiving.....	9
3 RESULTS.....	10
3.1 Introduction.....	10
3.1.1 Exterior.....	10
3.1.2 Barn Wing (Room 2)	10
3.1.3 Cottage (Room 1)	11
3.2 Photographic Survey	12
4 CONCLUSION	13
5 SOURCES CONSULTED	14
Appendix I.....	15
Gwynedd Archaeological Trust Written Scheme of Investigation	15
Appendix II.....	16
Gwynedd Archaeological Trust Photographic Metadata.....	16
Appendix III.....	17
Gwynedd Archaeological Trust Selection Strategy.....	17

FIGURES

Figure 01: Site Location. Based on Client Ordnance Survey Land Registry Map Sheet SH95. Scale 1:1250@A4.

Figure 02: Reproduction of Gruffydd Price drawing 01 job 1824. Scale: 1:50 and 1:100@A2.

Figure 03: Sketch plan detailing location and orientation of photographic archived. Not to scale. Based on Gruffydd Price drawing 01 job 1824.

PLATES

Plate 1: Exterior - View of exterior NE wall of cottage and large entrance to barn; scale 2x1m; view from NE (archive reference: G2778_001).

Plate 2: Exterior - Oblique view of barn and cottage from the E corner, exterior; scale 2x1m; view from E (archive reference: G2778_002).

Plate 3: Exterior - View of exterior SE wall of barn, showing window infilled with stone; scale 1x1m; view from SE (archive reference: G2778_003).

Plate 4: Exterior - Oblique view of S corner of barn with corner of cottage in background; scale 1x1m; view from S (archive reference: G2778_004).

Plate 5: Exterior - View of exterior SW wall of cottage and barn, showing window of barn; scale 1x1m; view from SW (archive reference: G2778_005).

Plate 6: Exterior - Oblique view of NW corner of cottage and barn, showing door into barn; scale 1x1m; view from NW (archive reference: G2778_006).

Plate 7: Exterior - View of N wall of cottage showing door into cottage, with barn in background; scale 2x1m; view from N (archive reference: G2778_007).

Plate 8: Exterior - Oblique view of N corner of cottage showing collapsed wall; scale 2x1m; view from N (archive reference: G2778_008).

Plate 9: Exterior - View of NE corner of cottage showing fireplace beam; scale 1x1m; view from NE (archive reference: G2778_009).

Plate 10: Exterior - View of large entrance into barn; scale 1x1m; view from NE (archive reference: G2778_010).

Plate 11: Exterior - Infilled ventilation slit in SE wall of barn; scale 0.10 m; view from SE (archive reference: G2778_011).

Plate 12: Exterior - Close-up of infilled ventilation slit in SE wall of barn; scale 0.10 m; view from SE (archive reference: G2778_012).

Plate 13: Exterior - Close-up of window infilled with stone in SE wall of barn; scale 1x1m; view from SE (archive reference: G2778_013).

Plate 14: Exterior - Close-up of window with concrete lintels and roof of barn; scale not used; view from S (archive reference: G2778_014).

Plate 15: Exterior - View of doorway into barn; scale 1x1m; view from NW (archive reference: G2778_015).

Plate 16: Exterior - View of blocked up doorway into cottage; scale 1x1m; view from SW (archive reference: G2778_016).

Plate 17: Exterior - View of collapsed SW wall of cottage and fireplace within; scale 1x1m; view from SW (archive reference: G2778_017).

Plate 18: Exterior - View of doorway into cottage and adjacent window; scale 1x1m; view from NW (archive reference: G2778_018).

Plate 19: Exterior - Close-up of window with sheet metal; scale not used; view from NW (archive reference: G2778_019).

Plate 20: Exterior - View of collapsed NE wall of cottage and fireplace within; scale 1x1m; view from NE (archive reference: G2778_020).

Plate 21: Exterior - Close-up of metal pins for gate in large entrance to barn; scale not used; view from N (archive reference: G2778_021).

Plate 22: Interior Barn - View of large fireplace inside barn; scale 1x1m; view from S (archive reference: G2778_022).

Plate 23: Interior Barn - View behind fireplace showing it is not attached to the wall of the barn; scale 1x1m; view from SW (archive reference: G2778_023).

Plate 24: Interior Barn - View of line between barn and cottage gable end, showing cottage is older; scale 1x1m; view from S (archive reference: G2778_024).

Plate 25: Interior Barn - View out of the barn doorway; scale 1x1m; view from S (archive reference: G2778_025).

Plate 26: Interior Barn - Close-up of old barn door; scale 1x1m; view from S (archive reference: G2778_026).

Plate 27: Interior Barn - View of window infilled with stone; scale 1x1m; view from N (archive reference: G2778_027).

Plate 28: Interior Barn - Close-up view of graffiti in fireplace lintel "David Shepherd"; scale 0.10 m; view from S (archive reference: G2778_028).

Plate 29: Interior Barn - View of trussed roof inside barn; scale not used; view from E (archive reference: G2778_029).

Plate 30: Interior Barn - View of trussed roof inside barn showing collapse; scale not used; view from E (archive reference: G2778_030).

Plate 31: Interior Barn - View of trussed roof inside barn; scale not used; view from SW (archive reference: G2778_031).

Plate 32: Interior Barn - Close-up of wooden pegs in trussed roof; scale not used; view from SW (archive reference: G2778_032).

Plate 33: Interior Barn - View of collapsed roof above fireplace in barn; scale not used; view from S (archive reference: G2778_033).

Plate 34: Interior Barn - View into barn from large entrance showing roof trusses; scale not used; view from E (archive reference: G2778_034).

Plate 35: Interior Barn - View of trussed roof in barn; scale not used; view from SW (archive reference: G2778_035).

Plate 36: Interior Cottage - View of large fireplace in N wall of cottage; scale 1x1m; view from SE (archive reference: G2778_036).

Plate 37: Interior Cottage - View out of the door and window into the cottage; scale 1x1m; view from S (archive reference: G2778_037).

Plate 38: Interior Cottage - Close-up of cottage window; scale not used; view from SE (archive reference: G2778_038).

Plate 39: Interior Cottage - Oblique view of fireplace and door leading out of cottage; scale 1x1m; view from SE (archive reference: G2778_039).

Plate 40: Interior Cottage - Close-up view of fireplace showing first floor fireplace above and small alcove in the right hand corner; scale 1x1m; view from SE (archive reference: G2778_040).

Plate 41: Interior Cottage - View of inside of cottage from the fireplace; scale 1x1m; view from NW (archive reference: G2778_041).

Plate 42: Interior Cottage - View of SE gable end of cottage; scale 1x1m; view from NW (archive reference: G2778_042).

Plate 43: Interior Cottage - View of blocked up doorway into cottage; scale 1x1m; view from NE (archive reference: G2778_043).

Plate 44: Interior Cottage - Close-up view of wooden beam protruding from SE gable end of the cottage; scale not used; view from N (archive reference: G2778_044).

Plate 45: Interior Cottage - View of wooden beams in the top of SE gable end; scale not used; view from NW (archive reference: G2778_045).

Plate 46: Interior Cottage - View of interior of cottage showing fireplace; scale 1x1m; view from SE (archive reference: G2778_046).

Plate 47: Interior Cottage - View of SW wall of the cottage showing collapse; scale 1x1m; view from NE (archive reference: G2778_047).

Plate 48: Interior Cottage - View of SW wall of the cottage showing collapse; scale 1x1m; view from N (archive reference: G2778_048).

Plate 49: Interior Cottage - View of the NE wall of the cottage showing collapse, large concrete block; scale 1x1m; view from W (archive reference: G2778_049).

Plate 50: Interior Cottage - View of the NE wall of the cottage showing collapse, large concrete block; scale 1x1m; view from W (archive reference: G2778_050).

Plate 51: Interior Cottage - Close-up of metal Victorian bedframe under collapsed stones; scale not used; view from NW (archive reference: G2778_051).

Plate 52: Interior Cottage - View up into fireplace chimney in cottage; scale not used; view from E (archive reference: G2778_052).

Plate 53: Interior Cottage - View up into fireplace chimney in cottage, showing collapsing beam; scale not used; view from E (archive reference: G2778_053).

Plate 54: Interior Cottage - Close-up of alcove and metal bar in fireplace; scale not used; view from SE (archive reference: G2778_054).

Plate 55: Interior Cottage - Close-up of wooden fireplace lintel; scale not used; view from SW (archive reference: G2778_055).

Plate 56: Interior Cottage - Close-up of carving in lintel and wooden addition; scale not used; view from S (archive reference: G2778_056).

Plate 57: Exterior - View of site in wider landscape context including farm yard; scale not used; view from NW (archive reference: G2778_057).

Plate 58: Exterior - View of site in wider landscape context including farm yard, slightly closer; scale not used; view from NW (archive reference: G2778_058).

Plate 59: Exterior - View of site in wider landscape context from the S; scale not used; view from S (archive reference: G2778_059).

Plate 60: Exterior - View of site in wider landscape context from the S, showing adjacent hill; scale not used; view from S (archive reference: G2778_060).

Plate 61: Exterior - View of site in wider landscape context with drystone wall in the foreground; scale not used; view from SE (archive reference: G2778_061).

Plate 62: Exterior - View of site in landscape with nearby small ruined building; scale not used; view from NE (archive reference: G2778_062).

Plate 63: Exterior - View of site from road with river adjacent; scale not used; view from NE (archive reference: G2778_063).

Plate 64: Exterior - View of nearby small ruined building with collapsed roof; scale not used; view from S (archive reference: G2778_064).

Plate 65: Exterior - View of site from the road showing drystone wall; scale not used; view from N (archive reference: G2778_065).

CRYNHODEB ANHECHNEGOL

Yn 2023, comisiynwyd Ymddiriedolaeth Archeolegol Gwynedd gan Mr. a Mrs. Ceri a Mark Katz i wneud arolwg ffotograffig o hen fwthyn ac ysgubor amaethyddol ym Moel Ddinas, Rhosygwalia, Y Bala, cyn ei drawsnewid yn dŷ fforddiadwy. Roedd yr arolwg ffotograffig yn cynnwys 65 o ddelweddau a oedd yn cynnwys golygfeydd allanol a mewnol o bob drychiad ac ystafell hygyrch. Adeiladwyd yr adeilad o flociau bach o gerrig maes rwbwl ac roedd yn cynnwys lle tân mawr a thystiolaeth o lawr cyntaf, tra bod y cyplau to pren yn awgrymu dyddiad o'r 18fed ganrif neu'n gynharach.

NON-TECHNICAL SUMMARY

In 2023 Gwynedd Archaeological Trust was commissioned by Mr. & Mrs. Ceri and Mark Katz to undertake a photographic survey of a former cottage and agricultural barn located at Moel Ddinas, Rhosygwalia, Y Bala, prior to conversion to an affordable dwelling. The photographic survey comprised 65 images which included exterior and internal views of all elevations and accessible rooms. The building was constructed from small blocks of rubble fieldstone and included a large fireplace and evidence of a first floor, whilst the wooden roof trusses suggested an 18th century date or earlier.

1 INTRODUCTION

Gwynedd Archaeological Trust (GAT) was commissioned by Mr & Mrs Ceri and Mark Katz to undertake archaeological mitigation prior to the conversion of a former cottage and agricultural barn to an affordable dwelling at Moel Ddinas, Rhosygwalia, Y Bala, LL23 7EY (SH 95235 31196) (Figure 01). The building was a stone-built structure with blocked up openings, corrugated roof, and timbers of an unknown date (Figure 02). Moel Y Ddinas is listed in the regional Historic Environment Record as Primary Reference Number (PRN) 81780 and described as being marked on the Ordnance Survey first edition map of 1888.

The internal and external alterations are being undertaken in accordance with consent ref., which stated:

Prior to any work commencing on the building a full photographic record of the building shall be undertaken in accordance with the guidance in G and approved by the Local Planning Authority.

The archaeological mitigation was undertaken in accordance with planning reference NP5/70/146A - Condition 5 and was commensurate with *Gwynedd Archaeological Planning Service Requirements for General Photographic Surveys of Buildings 2010* and a Photographic Survey as defined in *Understanding Historic Buildings: A guide to good recording practice* (Historic England, 2016). The aim of the Photographic Survey was to provide a very full visual record, but not a written or drawn survey at a comparable level of detail. All work was planned, managed, and undertaken by GAT in accordance with the following standards and guidance:

- Guidance for the Submission of Data to the Welsh Historic Environment Records (HERs) Version 2 (The Welsh Archaeological Trusts, 2022);
- Guidelines for digital archives (Royal Commission on Ancient and Historic Monuments of Wales, 2015).
- Management of Archaeological Projects (English Heritage, 1991);
- Management of Research Projects in the Historic Environment: The MoRPHE Project Managers' Guide (Historic England, 2015);
- Standard and Guidance for the Archaeological Investigation and Recording of Standing Buildings or Structures (Chartered Institute for Archaeologists, 2020);
- Standard and guidance for the collection, documentation, conservation, and research of archaeological materials (Chartered Institute for Archaeologists, 2020); and

- Understanding Historic Buildings: A Guide to Good Recording Practice (Historic England, 2016).

The archaeological mitigation was monitored by the Gwynedd Archaeological Planning Service (GAPS) and undertaken in accordance with an approved written scheme of investigation (cf. [Appendix I](#)). In line with the GAPS Environment Record (HER) requirements, the HER was contacted at the onset of the project to ensure that any data arising was formatted in a manner suitable for accession to the HER and followed the guidance set out in *Guidance for the Submission of Data to the Welsh Historic Environment Records (HERs)* (The Welsh Archaeological Trusts, 2022). The HER enquiry number for this project was GATHER1833 and the Event Primary Reference Number is 46619.

2 METHOD STATEMENT

2.1 Introduction

The archaeological mitigation was undertaken as a Photographic Survey, as defined by *Understanding Historic Buildings: A Guide to Good Recording Practice* (Historic England, 2016). The photographic survey was to provide a very full visual record, but without a written or drawn survey at a comparable level of detail. The photographic survey was undertaken on the 18th of April 2023.

2.2 Photographic Record

The Photographic Record included the following:

- A general view or views of the building (in its wider setting or landscape).
- The building's external appearance, typically a series of oblique views that will show all external elevations of the building, and give an overall impression of its size, shape, and immediate setting. Where individual elevations include complex historical information, it may also be appropriate to take views at right-angles to the plane of the elevation. Images received suggest oblique views will be necessary, due to the proximity of neighbouring buildings restricting space. In this instance, there is limited access and visibility of the north elevation, which represents the side of the building; an oblique image will be taken of this elevation.
- The overall appearance of the principal rooms and circulation areas. B.
- Any external or internal detail, structural or decorative, which is relevant to the building's design, development, and use, with scale where appropriate.
- A photographic register detailing the photo number, the location and direction of each view, and the composition of the shot.
- Photograph locations and directions of view marked on plans; in this instance, *Gruffydd Price drawing 01 job 1824* (Figure 02) was used.
- Photographs were of archive quality using a digital SLR (minimum 12 megapixel)
- Photographs, where appropriate (i.e., not general shots) included a clearly visible, graduated metric scale.
- Photographs were adequately lit and not blurry; all images checked on site.

Photographic images were taken using a digital SLR (Nikon D3100) camera set to maximum resolution (4608 x 3072; 14.2 effective megapixels) in RAW format. A photographic record was maintained on site using GAT pro-formas and digitised in Microsoft Excel and Access

as part of the fieldwork archive and dissemination process; a total of 65 images were taken (archive ref.: G2778_01 to G2778_65). The photographic images were converted to TIFF for final archiving using Adobe Photoshop.

2.3 Written Record

The Written Record comprised:

- The precise location of the building as an address and in the form of a National Grid reference.
- A note of any statutory designation (that is, listing, scheduling, Register of Historic Parks and Gardens, conservation area), where applicable.
- The date when the record was made, the name(s) of the recorder(s) and the location of the archive material.
- A summary statement describing the building's type and purpose, historically and at present, materials, and any dating, so far as was apparent from a superficial inspection.
- A basic written record was completed using GAT pro-formas.

2.4 Drawn Record

The Drawn Record comprised:

- A plan showing the location and direction of view of each photograph (Figure 03), with *Gruffydd Price drawing 01 job 1824* (Figure 02) used as a base plan.

2.5 Dissemination & Archiving

The physical archive is stored in a designated project folder and the location confirmed in the Data Management Plan; the digital dataset is stored on a dedicated Trust server, with the location confirmed in the Data Management Plan via a specific hyperlink. The working project archive in this instance comprises digital data including photographic data, documentation, and written data, as well as paper records, including project pro-formas. The Data Management Plan is stored on a project specific form in the GAT project database (format: *Microsoft Access*) and a Selection Strategy has been completed and appended (cf. [Appendix III](#)). The following dissemination and archiving of the report and digital dataset were applied:

- A digital report has been provided to Cyngor Gwynedd and Gwynedd Archaeological Planning Service (draft report then final report);
- A digital report has been provided to the regional Historic Environment Record; this was submitted within six months of project completion, along with a digital dataset comprising an Event PRN summary. The report and dataset was submitted in accordance with the required standards set out in *Guidance for the Submission of Data to the Welsh Historic Environment Records (HERs)* (Version 2); and
- A digital report and digital archive dataset have been provided to the Royal Commission on Ancient and Historical Monuments, Wales (final report only), in accordance with the *RCAHMW Guidelines for Digital Archives Version 1*. The dataset was prepared in the format required by RCAHMW and included:
 - Photographic metadata (Microsoft Access);
 - Photographic archive (TIFF format);
 - Project Information form (Excel);
 - File Information form (Excel) – Microsoft Word report text final;
 - File Information form (Excel) – Photographic metadata (general);
 - File Information form (Excel) – Adobe PDF report final; and
 - File Information form (Excel) - Photographic metadata (detail).

3 RESULTS

3.1 Introduction

3.1.1 *Exterior*

This building is composed of two wings, a lateral east west oriented wing with a large fireplace to the west, and a north-south barn wing, with a substantial fireplace in the northeast corner (cf. Figure 03). The lateral wing is gable ended, with the eaves level at a height of 2.75 m. It is constructed of local fieldstone rubble, with blocks up to 1.0 m x 0.3 m in size, of a rough shaley schist. The north facing elevation is somewhat collapsed and the location of the doorway and window opening difficult to determine. However, the large wooden fireplace lintel could be seen protruding through the wall at a height of 1.7 m above the ground level, with the probable doorway and a window to the east of it. The western gable end elevation had an off-centre doorway (south of the chimney breast) and a small window, 0.66 m x 0.52 m and 0.9 m above ground level, within the southern annexe to the building. Some cracking was noted in the masonry above the doorway, which had a stone lintel. The southern lateral wall was much collapsed, surviving to eaves level of 1.76 m only at the southwestern end. The southward protruding annexe (measured on plan) was very collapsed at its eastern end. The straight joint with the N-S barn wing demonstrates that this wing was the earlier. The eastern gable was only visible internally, but the barn wing could be seen to have been built up against it. The collapsed roof over the former cottage (room 1) had been recently removed, so it was possible to do further recording of the internal elements of that room.

3.1.2 *Barn Wing (Room 2)*

The north-south barn wing had a 3.5 m wide entrance on its northern side, and was built of generally smaller, irregular rubblestone blocks. A blocked window was noted on the eastern elevation, 0.7 m up from the ground level and 0.95 m wide by 1.2 m high. It was infilled with the rubblestone of a similar character to the main build. This window had nice arched voussoirs as a lintel, up to 0.35 m by 0.2 m, and a large stone sill 1.4 m long by 0.18 m wide. The east facing gable end showed no constructional dimensions with the rest of the barn wall, suggesting that the construction was all of one piece. An infilled ventilation shaft was noted, 0.45 m x 0.1 m, 0.8 m above the ground level, and 6.02 m from the NE corner, and possibly one 1.45 m north of it, giving further evidence of its use as a barn. The roof is covered in modern corrugated tin sheeting. The building is set within an area of farm paddock, in a small clearing of low-lying ground surrounded by wooded hills. Fragmentary remains of drystone walls were noted, probably parts of earlier paddocks that formed the in-

fields. The cottage (room 1) appears to be of an earlier 18th or 17th century date. The large fireplace lintel in room 1 and the roof trusses in the barn (room 2) seem suitable for dendrochronology in order to better estimate the date of the building, if this was considered appropriate. (cf. Figure 03). The river runs alongside the cottage to the north and east and would have provided essential supplies. To the rear of the building, evidence of a modern yard was noted. In the southwest corner of the western lateral wall was a doorway, 1.28 m wide and 1.8 m high. A large slate threshold slab was noted against the southern gable end wall. The southern gable end wall has a high window opening (unable to measure) that had a concrete sill and lintel, suggestive of modern work being carried out. Damage was noted to the bottom of the southwest corner of the gable.

The barn consisted of a single N-S room built of rubble fieldstone, gable ended and south facing; to the north it has a cross wing, oriented E-W. The roof survives partially and the purlins in the E-W roof are of a simple character, although of some antiquity. In the southern wing however, two queen post trusses survive, with angled bracing struts. These have wooden pegs, so they must be at least 18th century in date. The wall plates are shortened beams, and do not run along the length of the wall. The common rafters appear later in date, battened onto 18th c purlins. The south window has a concrete lintel suggesting late rebuilding of this gable end. The most dramatic feature however is a chimney breast in the NE corner of the room. It is 2.3 m long, 0.4 m wide and 0.2 m deep, with the opening 1.4 m wide. It abuts the gable end of the E-W cottage (room 1), so it is clearly later than the cottage. It is of a simple construction with a stone lintel 1.35 m above the ground surface, running the full length of the fireplace. It is graffitied with the name 'David Shepherd'. The chimney is of a rectangular construction, but with an 'L' shape on the northern side. The opening is partly filled at a lower level with modern breeze blocks. It is uncertain whether this fireplace was for domestic or agricultural/industrial purposes, but it is in an odd position for domestic use. There is evidence of a butt joint on the western internal wall, indicating that the barn is later than the cottage. The room is much more intact than room 1. There is a modern concrete floor surface, so no indication of the early floor was visible, except in the SW corner, where a raised slab of slate overlay earth and rubble.

3.1.3 Cottage (Room 1)

Room 1 appears to be a simple one room farm cottage that had a first floor above at least the fireplace end (as evidenced by the small fireplace above the main one), so it may be a traditional Welsh Crogloft cottage. It has a small protruding annexe space to the southeast. Remnants of structures in the eastern gable wall also hint at further subdivisions within the building, but the structure is in an advanced state of collapse. There is a large fireplace

against the western gable end, raising the full height of the gable. It has a very large wooden lintel >4.9 m long, 0.4 m wide and 0.28 m deep. With a rough chamfer on the face, it protrudes through the northern lateral wall. A small fireplace c. 1m x 0.6 m in the chimney breast above the lintel indicates that the building at one time had a first-floor level at the fireplace end, possibly a Crogloft. There is also evidence of floor joist holes above the wooden fireplace lintel. There is a small alcove in the NW corner of the chimney, suggestive of a bread oven. To the southwest of the chimney breast, within the annex, there is an entrance doorway. It has wooden lintels and a door surround surviving (2.1 m high). To the south of this is a small window opening with angled returns, wooden lintel, and wooden window surrounds. There is an opening for a door in the SE corner, now blocked with modern breeze blocks (see plan). The eastern gable end has two wooden cross beams embedded within it, and a beam sawn off 0.25² That may have supported the first floor and been the main roof joist. The gable end is otherwise made of undistinguishable rubble fieldstone. The interior of the building was filled with collapsed rubble and some timber that may have formed part of the internal fittings. The windows/door on the north side is now hard to distinguish due to the level of collapse.

3.2 Photographic Survey

The photographic survey was undertaken on 19/04/2023 by Rob Evans and Jessie Baumgardner. A total of 65 images were taken on a Nikon D3000, Resolution 3872 x 2592. (G2778_001 through G2778_065, see [Appendix II](#)). Exterior shots were taken first, and then interior shots of the barn and cottage. Shots of the site in a wider landscape context were then taken from three different locations. The weather was warm and sunny. All angles were successfully accessed, and a comprehensive photographic record of the structures was obtained (cf. Figure 03 for the location and orientation of the photographic archive, room numbers in red).

4 CONCLUSION

Gwynedd Archaeological Trust was commissioned by Mr. & Mrs. Ceri and Mark Katz to undertake a photographic survey prior to renovation works. The building was comprised of a simple one room cottage, with an additional E-W barn wing which was added on later. The barn and cottage are both comprised of small blocks of rubble fieldstone. The north and south walls of the cottage are heavily collapsed, and the tin roof had recently been removed. The cottage featured a large annexe area on the south side, a large fireplace, and a first floor at one time. The barn wing also contained a large fireplace, which was constructed separately from the barn wall. This L shaped fireplace may have had some agricultural or industrial function. Based on the wooden roof trusses with pegs in the barn, we can estimate a 18th century date or earlier for the building.

5 SOURCES CONSULTED

1. Chartered Institute for Archaeologists, 2020, Standard and Guidance for the Archaeological Investigation and Recording of Standing Buildings or Structures
2. Chartered Institute for Archaeologists, 2020, Standard and guidance for the collection, documentation, conservation, and research of archaeological materials
3. English Heritage, 1991, Management of Archaeological Projects (MAP2)
4. Historic England, 2015, Management of Research Projects in the Historic Environment (MoRPHE)
5. Historic England, 2016. *Understanding Historic Buildings: A Good to Good Recording Practice*
6. Royal Commission on Ancient and Historic Monuments of Wales, 2015, Guidelines for digital archives
7. The Welsh Archaeological Trusts, 2022. *Guidance for the Submission of Data to the Welsh Historic Environment Records (HERs) Version 2.*

New boundary -

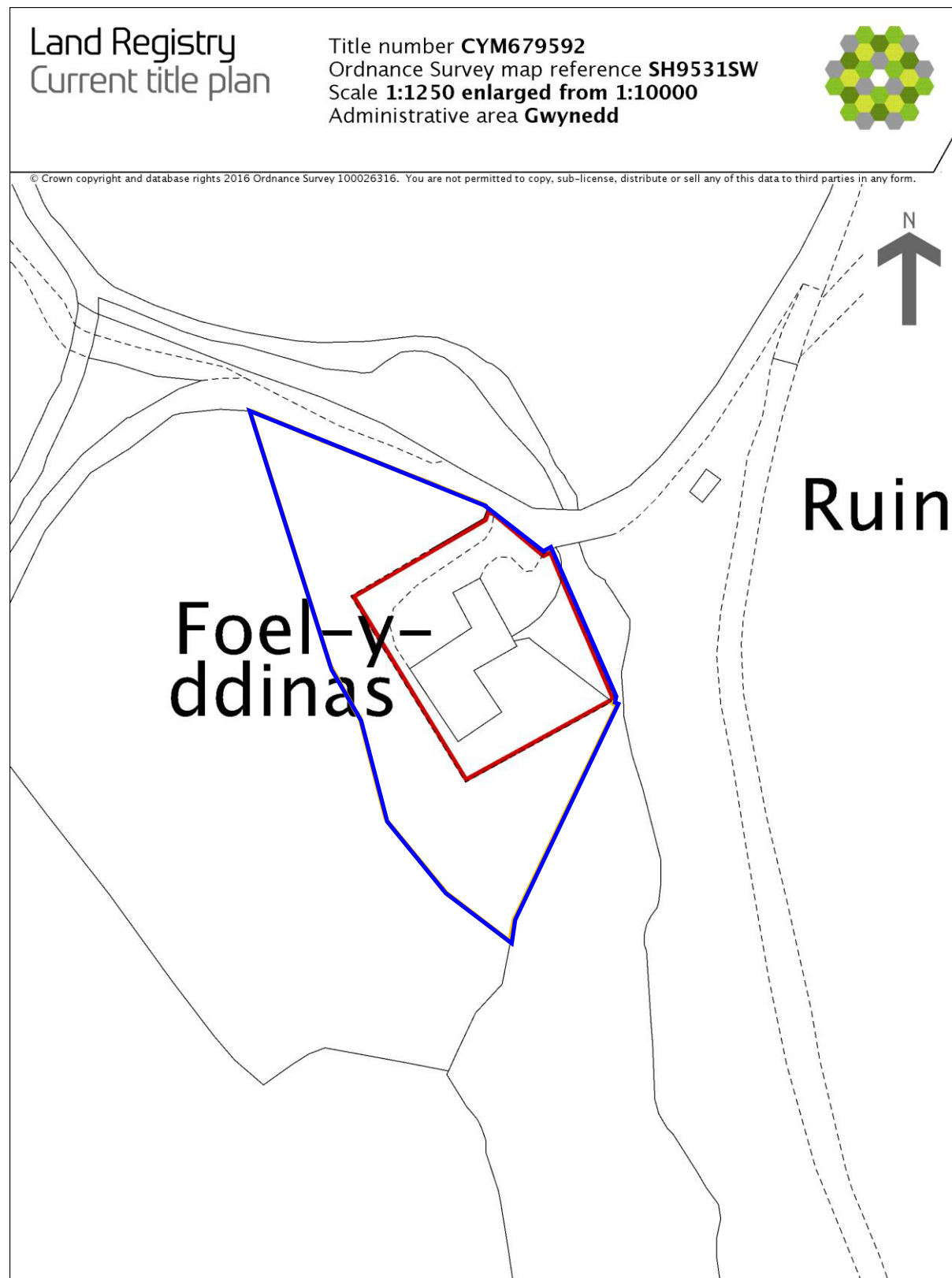
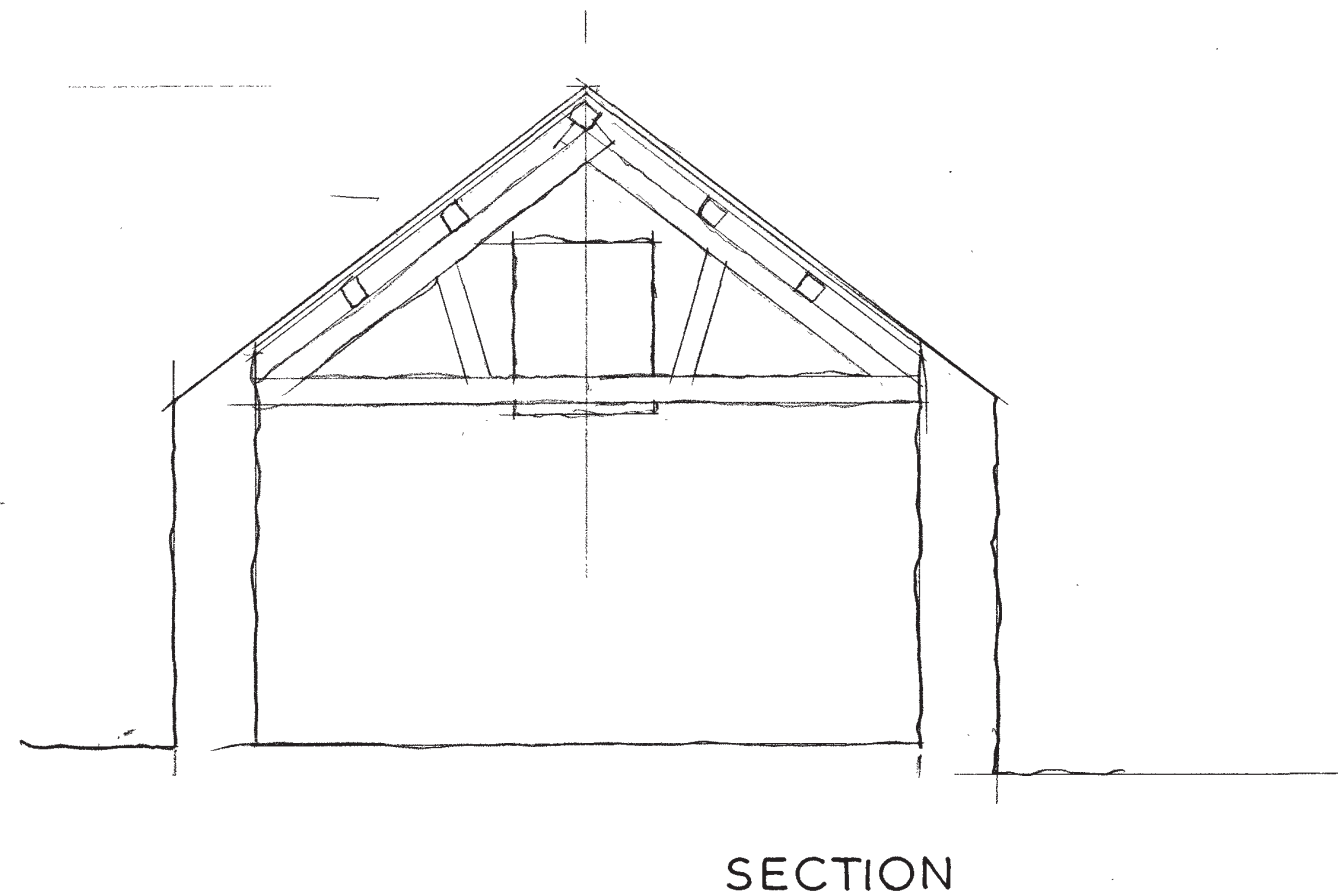
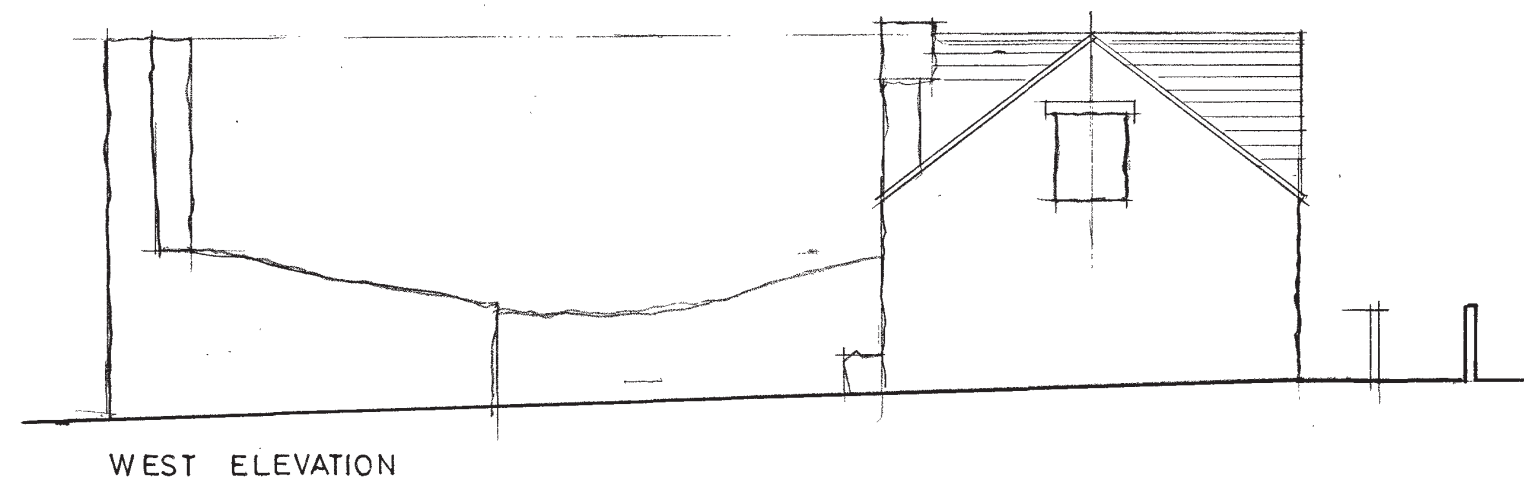
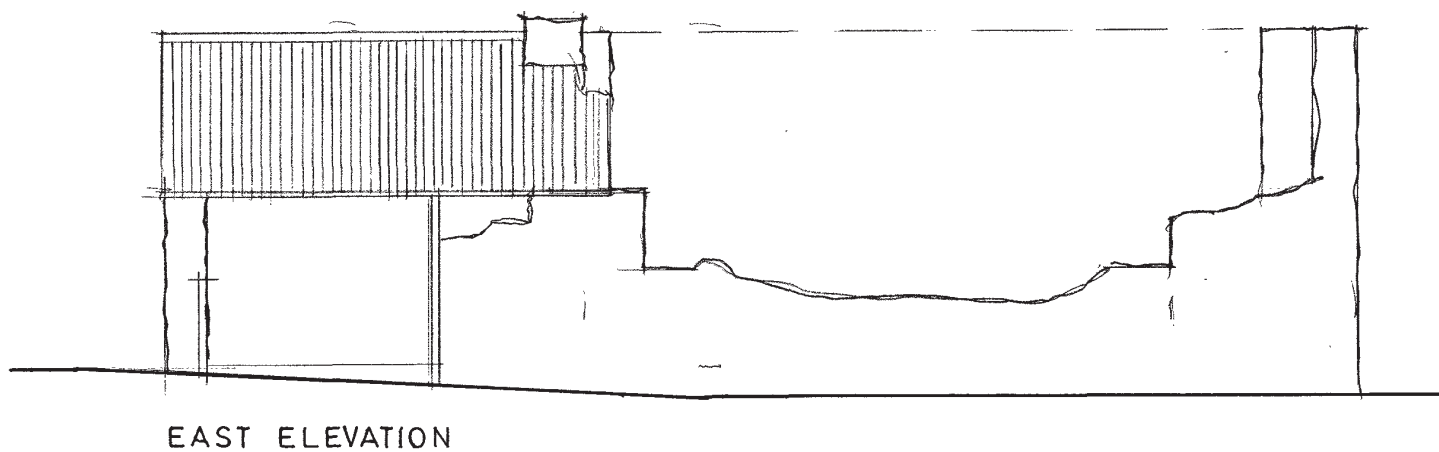
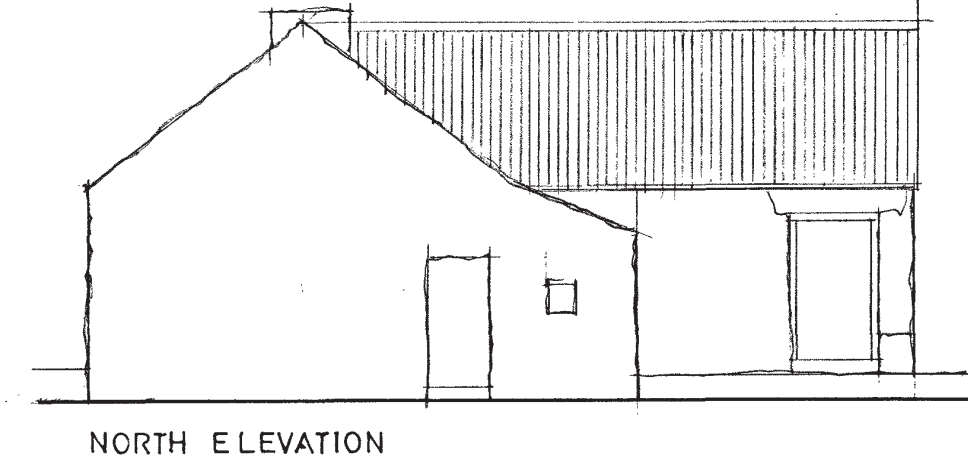
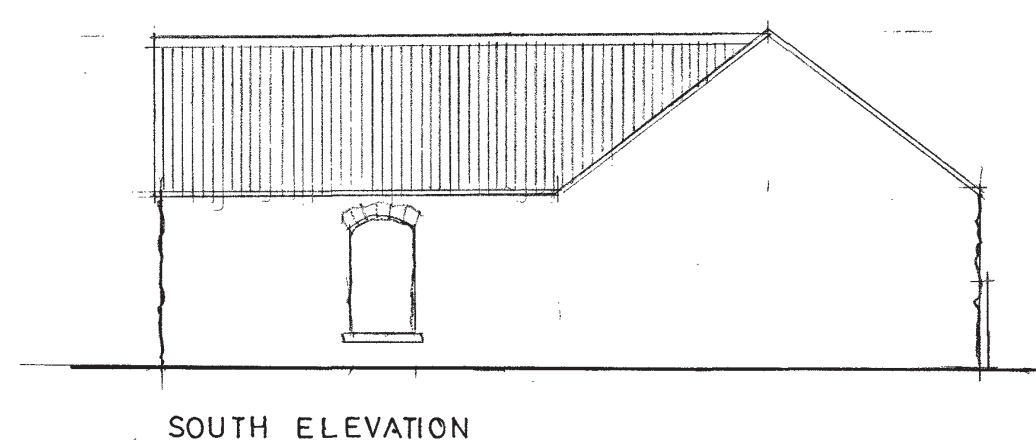
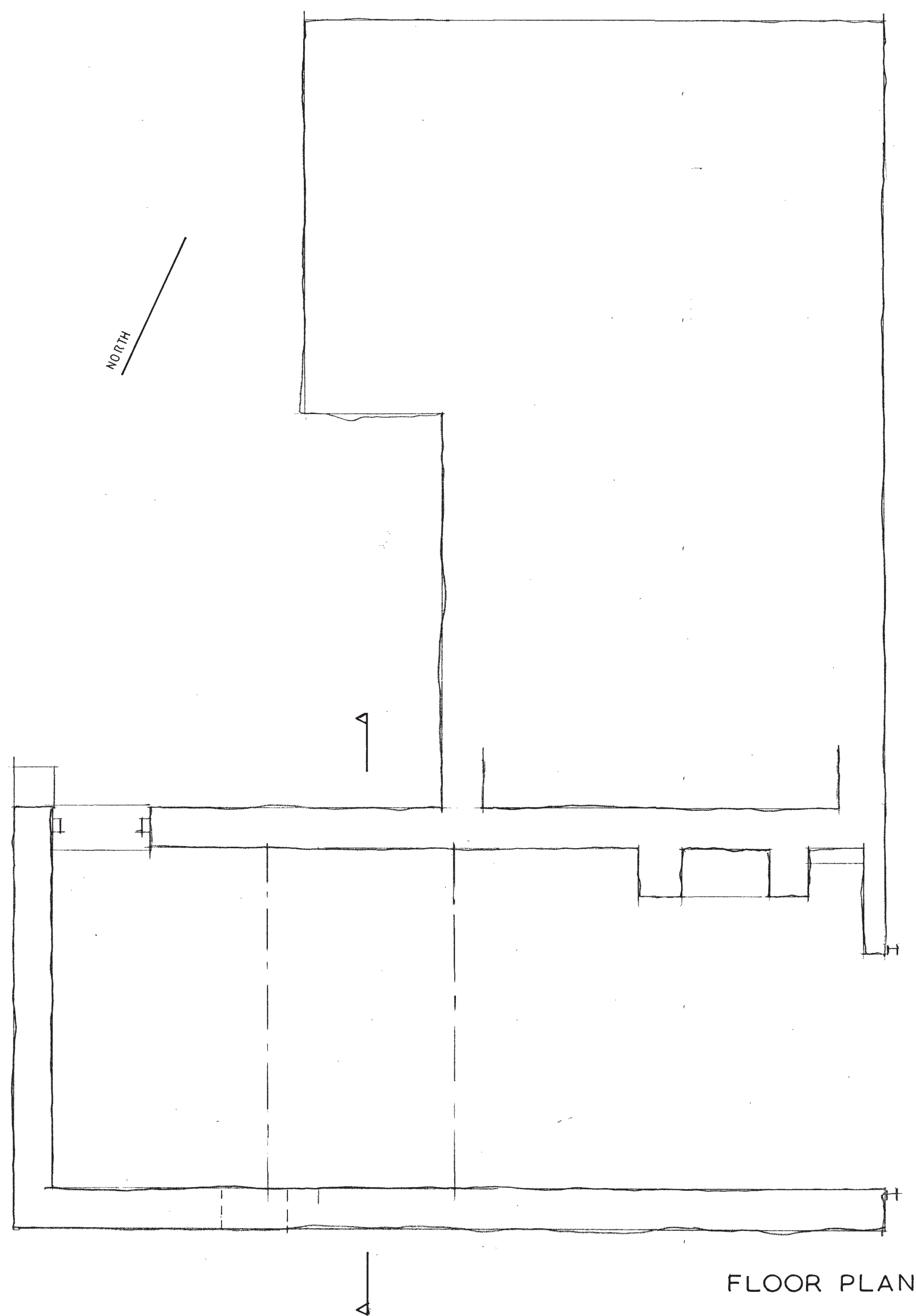


Figure 01: Site Location. Based on Client Ordnance Survey Land Registry Map Sheet SH95.
Scale 1:1250@A4



AMENDMENTS			
No		Date	By
Do not scale this drawing Architects to be notified of discrepancies in figured dimensions Contractors must check all dimensions from site This drawing is copyright			
Job PROPOSED BARN CONVERSION MOEL DDINAS RHOSYGWALIAU BALA			
Title PLANS AS EXISTING			
Job 1824 Issue	Drawing 01		
Scale 1:50, 1:100 @ A2			
Drawn		Date 191120	
Gruffydd Price R.I.B.A. Gwylfa Llanbedr Meirion, Gwynedd, LL45 2LW TEL: (01341) 241448			

Figure 02: Reproduction of Gruffydd Price drawing 01 job 1824. Scale: 1:50 and 1:100@A2.

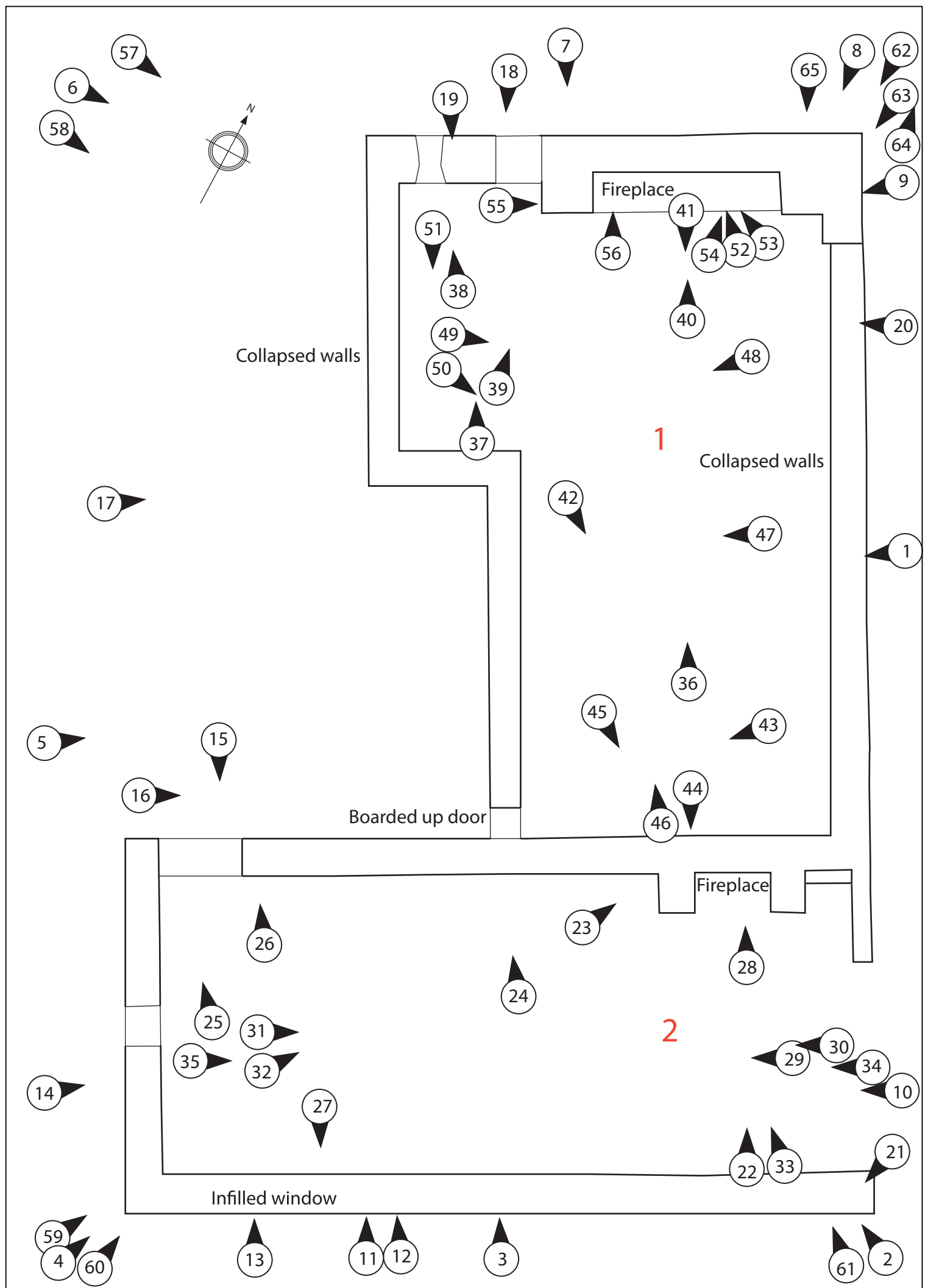


Figure 03: Sketch plan detailing location and orientation of photographic archived. Not to scale.
Based on Gruffydd Price drawing 01 job 1824.



Plate 1: Exterior - View of exterior NE wall of cottage and large entrance to barn; scale 2x1m; view from NE (archive reference: G2778_001).



Plate 2: Exterior - Oblique view of barn and cottage from the E corner, exterior; scale 2x1m; view from E (archive reference: G2778_002).



Plate 3: Exterior - View of exterior SE wall of barn, showing window infilled with stone; scale 1x1m; view from SE (archive reference: G2778_003).



Plate 4: Exterior - Oblique view of S corner of barn with corner of cottage in background; scale 1x1m; view from S (archive reference: G2778_004).



Plate 5: Exterior - View of exterior SW wall of cottage and barn, showing window of barn; scale 1x1m; view from SW (archive reference: G2778_005).



Plate 6: Exterior - Oblique view of NW corner of cottage and barn, showing door into barn; scale 1x1m; view from NW (archive reference: G2778_006).



Plate 7: Exterior - View of N wall of cottage showing door into cottage, with barn in background; scale 2x1m; view from N (archive reference: G2778_007).



Plate 8: Exterior - Oblique view of N corner of cottage showing collapsed wall; scale 2x1m; view from N (archive reference: G2778_008).



Plate 9: Exterior - View of NE corner of cottage showing fireplace beam; scale 1x1m; view from NE (archive reference: G2778_009).



Plate 10: Exterior - View of large entrance into barn; scale 1x1m; view from NE (archive reference: G2778_010).



Plate 11: Exterior - Infilled ventilation slit in SE wall of barn; scale 0.10 m; view from SE (archive reference: G2778_011).

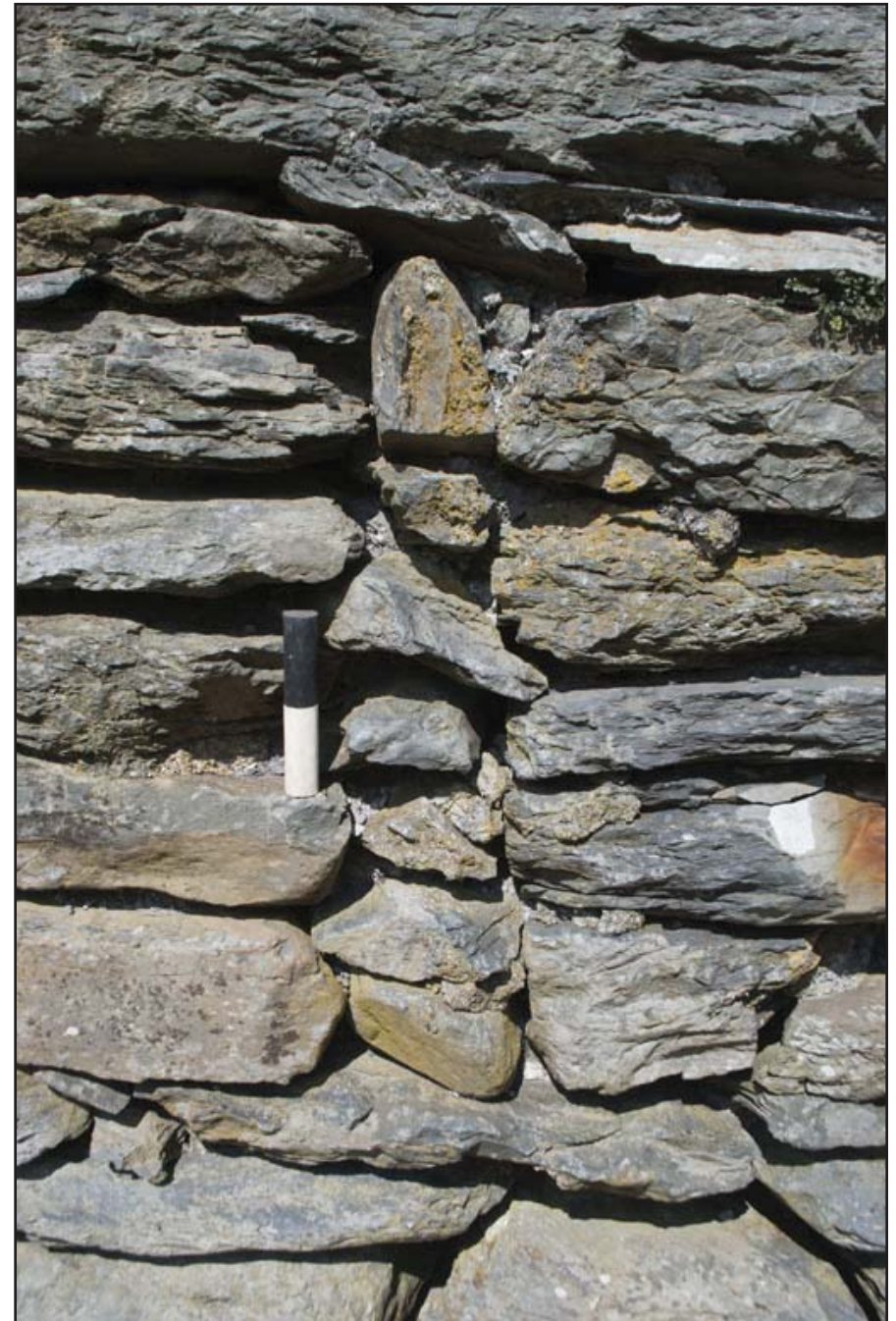


Plate 12: Exterior - Close-up of infilled ventilation slit in SE wall of barn; scale 0.10 m; view from SE (archive reference: G2778_012).



Plate 13: Exterior - Close-up of window infilled with stone in SE wall of barn; scale 1x1m; view from SE (archive reference: G2778_013).



Plate 14: Exterior - Close-up of window with concrete lintels and roof of barn; scale not used; view from S (archive reference: G2778_014).



Plate 15: Exterior - View of doorway into barn; scale 1x1m; view from NW
(archive reference: G2778_015).



Plate 16: Exterior - View of blocked up doorway into cottage; scale 1x1m; view from SW
(archive reference: G2778_016).



Plate 17: Exterior - View of collapsed SW wall of cottage and fireplace within; scale 1x1m; view from SW (archive reference: G2778_017).



Plate 18: Exterior - View of doorway into cottage and adjacent window; scale 1x1m; view from NW (archive reference: G2778_018).



Plate 19: Exterior - Close-up of window with sheet metal; scale not used; view from NW (archive reference: G2778_019).



Plate 20: Exterior - View of collapsed NE wall of cottage and fireplace within; scale 1x1m; view from NE (archive reference: G2778_020).



Plate 21: Exterior - Close-up of metal pins for gate in large entrance to barn; scale not used; view from N (archive reference: G2778_021).



Plate 22: Interior Barn - View of large fireplace inside barn; scale 1x1m; view from S (archive reference: G2778_022).



Plate 25: Interior Barn - View out of the barn doorway; scale 1x1m; view from S (archive reference: G2778_025).



Plate 26: Interior Barn - Close-up of old barn door; scale 1x1m; view from S (archive reference: G2778_026).



Plate 27: Interior Barn - View of window infilled with stone; scale 1x1m; view from N (archive reference: G2778_027).



Plate 28: Interior Barn - Close-up view of graffiti in fireplace lintel "David Shepherd"; scale 0.10 m; view from S (archive reference: G2778_028).



Plate 29: Interior Barn - View of trussed roof inside barn; scale not used; view from E (archive reference: G2778_029).



Plate 30: Interior Barn - View of trussed roof inside barn showing collapse; scale not used; view from E (archive reference: G2778_030).



Plate 31: Interior Barn - View of trussed roof inside barn; scale not used; view from SW (archive reference: G2778_031).



Plate 32: Interior Barn - Close-up of wooden pegs in trussed roof; scale not used; view from SW (archive reference: G2778_032).



Plate 33: Interior Barn - View of collapsed roof above fireplace in barn; scale not used; view from S (archive reference: G2778_033).



Plate 34: Interior Barn - View into barn from large entrance showing roof trusses; scale not used; view from E (archive reference: G2778_034).



Plate 35: Interior Barn - View of trussed roof in barn; scale not used; view from SW
(archive reference: G2778_035).



Plate 36: Interior Cottage - View of large fireplace in N wall of cottage; scale 1x1m; view from SE
(archive reference: G2778_036).



Plate 37: Interior Cottage - View out of the door and window into the cottage; scale 1x1m; view from S (archive reference: G2778_037).



Plate 38: Interior Cottage - Close-up of cottage window; scale not used; view from SE (archive reference: G2778_038).



Plate 39: Interior Cottage - Oblique view of fireplace and door leading out of cottage; scale 1x1m; view from SE (archive reference: G2778_039).



Plate 40: Interior Cottage - Close-up view of fireplace showing first floor fireplace above and small alcove in the right hand corner; scale 1x1m; view from SE (archive reference: G2778_040).



Plate 41: Interior Cottage - View of inside of cottage from the fireplace; scale 1x1m; view from NW (archive reference: G2778_041).



Plate 42: Interior Cottage - View of SE gable end of cottage; scale 1x1m; view from NW (archive reference: G2778_042).



Plate 43: Interior Cottage - View of blocked up doorway into cottage; scale 1x1 m; view from NE (archive reference: G2778_043).



Plate 44: Interior Cottage - Close-up view of wooden beam protruding from SE gable end of the cottage; scale not used; view from N (archive reference: G2778_044).



Plate 45: Interior Cottage - View of wooden beams in the top of SE gable end; scale not used; view from NW (archive reference: G2778_045).



Plate 46: Interior Cottage - View of interior of cottage showing fireplace; scale 1x1m; view from SE (archive reference: G2778_046).



Plate 47: Interior Cottage - View of SW wall of the cottage showing collapse; scale 1x1m; view from NE (archive reference: G2778_047).



Plate 48: Interior Cottage - View of SW wall of the cottage showing collapse; scale 1x1m; view from N (archive reference: G2778_048).



Plate 49: Interior Cottage - View of the NE wall of the cottage showing collapse, large concrete block; scale 1x1m; view from W (archive reference: G2778_049).



Plate 50: Interior Cottage - View of the NE wall of the cottage showing collapse, large concrete block; scale 1x1m; view from W (archive reference: G2778_050).

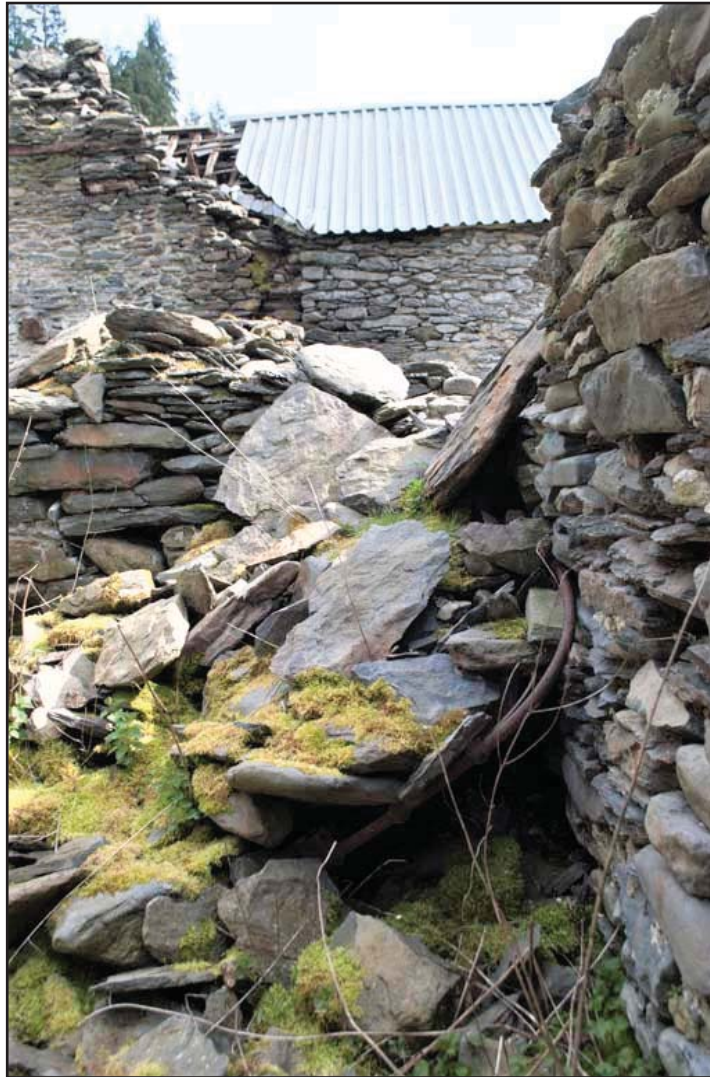


Plate 51: Interior Cottage - Close-up of metal Victorian bedframe under collapsed stones; scale not used; view from NW (archive reference: G2778_051).



Plate 52: Interior Cottage - View up into fireplace chimney in cottage; scale not used; view from E (archive reference: G2778_052).



Plate 53: Interior Cottage - View up into fireplace chimney in cottage, showing collapsing beam; scale not used; view from E (archive reference: G2778_053).



Plate 54: Interior Cottage - Close-up of alcove and metal bar in fireplace; scale not used; view from SE (archive reference: G2778_054).



Plate 55: Interior Cottage - Close-up of wooden fireplace lintel; scale not used; view from SW (archive reference: G2778_055).



Plate 56: Interior Cottage - Close-up of carving in lintel and wooden addition; scale not used; view from S (archive reference: G2778_056).



Plate 57: Exterior - View of site in wider landscape context including farm yard; scale not used; view from NW (archive reference: G2778_057).

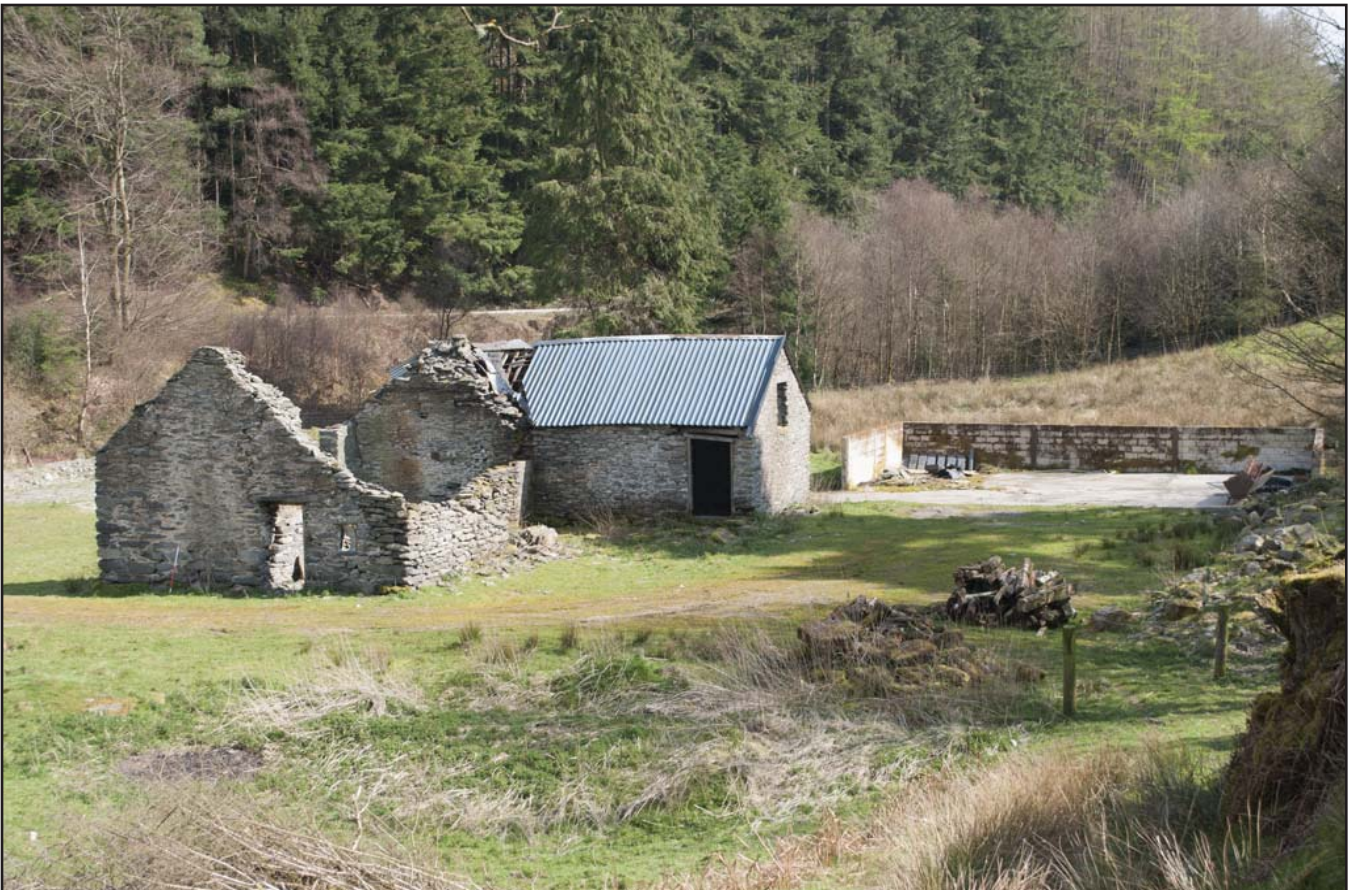


Plate 58: Exterior - View of site in wider landscape context including farm yard, slightly closer; scale not used; view from NW (archive reference: G2778_058).



Plate 59: Exterior - View of site in wider landscape context from the S; scale not used; view from S (archive reference: G2778_059).



Plate 60: Exterior - View of site in wider landscape context from the S, showing adjacent hill; scale not used; view from S (archive reference: G2778_060).



Plate 61: Exterior - View of site in wider landscape context with drystone wall in the foreground; scale not used; view from SE (archive reference: G2778_061).



Plate 62: Exterior - View of site in landscape with nearby small ruined building; scale not used; view from NE (archive reference: G2778_062).



Plate 63: Exterior - View of site from road with river adjacent; scale not used; view from NE (archive reference: G2778_063).



Plate 64: Exterior - View of nearby small ruined building with collapsed roof; scale not used; view from S (archive reference: G2778_064).



Plate 65: Exterior - View of site from the road showing drystone wall; scale not used; view from N (archive reference: G2778_065).

APPENDIX I

Gwynedd Archaeological Trust Written Scheme of Investigation

MOEL DDINAS, RHOSYGWALIAU (G2778)

WRITTEN SCHEME OF INVESTIGATION FOR ARCHAEOLOGICAL MITIGATION: PHOTOGRAPHIC SURVEY



Prepared for

Mr. & Mrs. Ceri and Mark Katz

April 2023



Ymddiriedolaeth Archaeolegol Gwynedd
Gwynedd Archaeological Trust

Approvals Table				
	Role	Printed Name	Signature	Date
Originated by	Document Author	Michael S Lynes	Michael S Lynes	03/04/23
Reviewed by	Document Reviewer	John Roberts		03/04/23
Approved by	Principal Archaeologist	John Roberts		03/04/23

Revision History			
Rev No.	Summary of Changes	Ref Section	Purpose of Issue

All GAT staff should sign their copy to confirm the project specification is read and understood and retain a copy of the specification for the duration of their involvement with the project. On completion, the specification should be retained with the project archive:

Name

Signature

Date

MOEL DDINAS, RHOSYGWALIAU (G2778)

WRITTEN SCHEME OF INVESTIGATION FOR ARCHAEOLOGICAL MITIGATION: PHOTOGRAPHIC SURVEY

Prepared for *Mr. & Mrs. Ceri and Mark Katz*, April 2023

Historic Environment Record Event Primary Reference Number **46619**

1	INTRODUCTION.....	6
1.1	Aims and Objectives	7
1.2	Monitoring Arrangements.....	7
1.3	Historic Environment Record	8
2	METHOD STATEMENT	9
2.1	Introduction.....	9
2.2	Photographic Record	10
2.3	Written Record.....	12
2.4	Drawn Record.....	13
2.5	Selection Strategy & Data Management Plan	14
2.6	Reporting	15
2.7	Dissemination & Archiving	16
3	PERSONNEL	17
4	HEALTH AND SAFETY.....	18
5	social media	19
6	INSURANCE	20
6.1	Public/Products Liability	20
6.2	Employers Liability	20
6.3	Professional Indemnity.....	20
7	SOURCES CONSULTED.....	21

Figure 01.....	22
Site Location. Based on Client Ordnance Survey Land Registry Map Sheet SH95. Scale 1:1250@A4.....	22
Figure 02.....	23
Reproduction of Gruffydd Price drawing 01 job 1824. Scale: 1:50 and 1:100@A2	23
Appendix I	24
Gwynedd Archaeological Trust Photographic Metadata Pro-Forma	24
Appendix II	25
Gwynedd Archaeological Trust Building Record pro-forma	25
Appendix III	26
Gwynedd Archaeological Trust room recording pro-forma ..	Error! Bookmark not defined.
Appendix IV	27
Gwynedd Archaeological Trust Selection Strategy.....	27

1 INTRODUCTION

Gwynedd Archaeological Trust (GAT) has been commissioned by Mr & Mrs Ceri and Mark Katz to undertake archaeological mitigation prior to the conversion of a former agricultural barn in to an affordable dwelling at Moel Ddinas, Rhosygwalia, Y Bala, LL23 7EY (SH 95235 31196) ([Figure 01](#)). The building is a stone-built structure with blocked up openings, corrugated roof and timbers of an unknown date ([Figure 02](#)). Moel Y Ddinas is listed in the regional Historic Environment Record as Primary Reference Number (PRN) 81780 and described as being marked on the Ordnance Survey first edition map of 1888.

The internal and external alterations will be undertaken in accordance with consent ref. NP5/70/146A, Condition 5, which states:

Prior to any work commencing on the building a full photographic record of the building shall be undertaken in accordance with the guidance in Gwynedd Archaeological Planning Service Requirements for General Photographic Surveys of Buildings 2010 and approved by the Local Planning Authority.

The archaeological mitigation will be undertaken in accordance with these requirements and will be commensurate to a Photographic Survey as defined in *Understanding Historic Buildings: A guide to good recording practice* (Historic England, 2016). A Photographic Survey provides a very full visual record, but without a written or drawn survey at a comparable level of detail. All work will be planned, managed and undertaken by GAT in accordance with the following standards and guidance:

- Guidance for the Submission of Data to the Welsh Historic Environment Records (HERs) Version 2 (The Welsh Archaeological Trusts, 2020);
- Guidelines for digital archives (Royal Commission on Ancient and Historic Monuments of Wales, 2015).
- Gwynedd Archaeological Planning Service Requirements for General Photographic Surveys of Buildings, 2010
- Management of Archaeological Projects (English Heritage, 1991);
- Management of Research Projects in the Historic Environment: The MoRPHE Project Managers' Guide (Historic England, 2015);
- Standard and Guidance for the Archaeological Investigation and Recording of Standing Buildings or Structures (Chartered Institute for Archaeologists, 2020);

- Standard and guidance for the collection, documentation, conservation, and research of archaeological materials (Chartered Institute for Archaeologists, 2020); and
- Understanding Historic Buildings: A Guide to Good Recording Practice (Historic England, 2016).

Gwynedd Archaeological Trust is certified to ISO 9001:2008 and ISO 14001:2004 (Cert. No. 74180/A/0001/UK/En), a Registered Organisation with the Chartered Institute for Archaeologists (CIfA), and a member of the Federation of Archaeological Managers and Employers (FAME).

1.1 Aims and Objectives

The key aims and objectives are to:

- Complete a full photographic record of Moel Ddinas prior to development.

1.2 Monitoring Arrangements

The archaeological mitigation will be monitored by the Gwynedd Archaeological Planning Service (GAPS); both the written scheme of investigation and all subsequent reporting must be approved by GAPS before final issue. GAPS contact details are:

- Tom Fildes | tom.fildes@heneb.co.uk | 07920264232.

1.3 Historic Environment Record

In line with the GAPS Environment Record (HER) requirements, the HER will be contacted at the onset of the project to ensure that any data arising is formatted in a manner suitable for accession to the HER and follows the guidance set out in *Guidance for the Submission of Data to the Welsh Historic Environment Records (HERs)* (The Welsh Archaeological Trusts, 2018). In line with this guidance, all submitted reporting will need to include the equivalent of a non-technical summary in Welsh and English at the front of the report combined with short bilingual summaries of the principal Historic Assets recorded during the event. These requirements are mandatory. The HER Enquiry Number for this project is **GATHER1833** and the Event Primary Reference Number is **46619**.

2 METHOD STATEMENT

2.1 Introduction

The archaeological mitigation will be undertaken as a Photographic Survey, as defined by *Understanding Historic Buildings: A Guide to Good Recording Practice* (Historic England, 2016). A photographic survey provides a very full visual record, but without a written or drawn survey at a comparable level of detail. A comprehensive photographic survey may be called for when recording a building for which there is no need for detailed analysis. It may also be appropriate for recording a building of well-known type which is under threat, but where existing documentation is in other respects adequate, or when for some other reason drawings and historical analysis are not required. The Photographic Survey will incorporate the exterior and interior of the building as detailed in *Gruffydd Price drawing 01 job 1824* ([Figure 02](#)).

2.2 Photographic Record

The Photographic Record will include the following as a minimum:

- A general view or views of the building (in its wider setting or landscape).
- The building's external appearance. Typically, a series of oblique views that will show all external elevations of the building, and give an overall impression of its size, shape and immediate setting. Where individual elevations include complex historical information, it may also be appropriate to take views at right-angles to the plane of the elevation. Images received suggest oblique views will be necessary, due to the proximity of neighbouring buildings restricting space. In this instance, there is limited access and visibility of the north elevation, which represents the side of the building; an oblique image will be taken of this elevation.
- The overall appearance of the principal rooms and circulation areas
- Any external or internal detail, structural or decorative, which is relevant to the building's design, development and use, with scale where appropriate.
- A photographic register detailing the photo number, the location and direction of each view, and the composition of the shot.
- Photograph locations and directions of view marked on plans. In this instance, *Gruffydd Price drawing 01 job 1824* ([Figure 02](#)). will be used.
- Photographs should be of archive quality using a digital SLR (minimum 12 megapixel)
- Photographs, where appropriate (i.e. not general shots) should include a clearly visible, graduated metric scale.
- Photographs should be adequately lit and not blurry. With all images checked on site.

Photographic images will be taken using a digital SLR (Nikon D5100) camera set to maximum resolution (4928 × 3264; 16.2 effective megapixels) in RAW format. Camera tripods and poles will be used for the elevations and where practical elsewhere. A photographic record will be maintained on site using GAT pro-formas ([Appendix III](#)) and digitised in Microsoft Excel and Access as part of the fieldwork archive and dissemination process; the archive numbering system will start from G2778_001. The location and orientation of photographs taken will be recorded on a scaled plan and digitised for final reporting. The photographic images will then be converted to TIFF for final archiving using Adobe Photoshop.

2.3 Written Record

As a minimum, the Written Record will comprise of:

- The precise location of the building as an address and in the form of a National Grid reference.
- A note of any statutory designation (that is, listing, scheduling, Register of Historic Parks and Gardens, conservation area), where applicable. Information on statutory designations can be found on the CADW website. Non-statutory designations (local lists) may be added. The building is not listed and does not currently have a Primary Reference Number assigned by the regional Historic Environment Record.
- The date when the record was made, the name(s) of the recorder(s) and the location of any archive material.
- A summary statement. This account should describe the buildings type and purpose, historically and at present, its materials and possible date(s), so far as these are apparent from a superficial inspection. The building was established in the mid-nineteenth century as a public house and hotel and has retained this function throughout its history. The photographic record will aim to document evidence for any phasing.

A basic written record will be completed using a building record pro-forma ([Appendix II](#)) and a room record pro-forma ([Appendix III](#)) to assist with archiving and reporting.

2.4 Drawn Record

As a minimum, the Drawn Record will comprise of:

- A plan showing the location and direction of view of each photograph. In this instance, the scaled plans detailed in *Gruffydd Price drawing 01 job 1824* ([Figure 02](#)) will be used for reference and as a base plan.

2.5 Selection Strategy & Data Management Plan

As stated in *Standard and guidance for the creation, compilation, transfer and deposition of archaeological archives* (Chartered Institute for Archaeologists, 2020), para. 3.3.1, “Project specifications, research designs or similar documents should include a project- specific Selection Strategy and a Data Management Plan. The Chartered Institute for Archaeologists states that “(I)t is widely accepted that not all the records and materials collected or created during the course of an Archaeological Project require preservation in perpetuity. These records and materials constitute the Working Project Archive which will be subject to Selection, in order to establish what will be retained for long-term curation” (<https://www.archaeologists.net/selection-toolkit>). The working project archive in this instance will comprise digital data including photographic data, documentation and written data, as well as paper records, including project pro-formas. The Data Management Plan will be stored on a project specific form in the GAT project database (format: *Microsoft Access*) and the Selection Strategy will be based on a GAT pro-forma (cf. [Appendix IV](#)) that will be appended to the final report.

This working project archive data will be processed as follows:

1. Pro-formas: all cross referenced and scanned for digital archiving;
2. Photographic Metadata: cross-referenced with all pro-formas and completed in *Microsoft Excel*;

Information from these will be used to compile the project report. The physical archive will be stored in a designated project folder and the location confirmed in the Data Management Plan; the digital dataset will be stored on a dedicated Trust server, with the location confirmed in the Data Management Plan via a specific hyperlink. External datasets for the HER and RCAHMW are as defined in the dissemination strategy below.

2.6 Reporting

The project report will include the following:

1. Front cover;
 2. Inner cover;
 3. Figures and Plates List;
 4. Non-technical summary (Welsh/English);
 5. Introduction;
 6. Methodology;
 7. Results;
 8. Conclusion
 9. Bibliography;
 10. Figures; inc.:
 - location plan;
 - location and orientation of images taken.
 11. Plates; inc.
 - Illustrative examples from the Photographic Survey
 12. Appendix I (approved specification);
 13. Appendix II (Photographic metadata);
 14. Appendix III (Selection Strategy)
- Back cover.

2.7 Dissemination & Archiving

The following dissemination and archiving of the report and digital dataset will be applied:

- A digital report will be provided to *Cornerstone Properties (Llandudno) LTD.* and Gwynedd Archaeological Planning Service (draft report then final report);
- A digital report will be provided to the regional Historic Environment Record; this will be submitted within six months of project completion, along with a digital dataset comprising an Event PRN summary. The report and dataset will be submitted in accordance with the required standards set out in *Guidance for the Submission of Data to the Welsh Historic Environment Records (HERs)* (Version 2); and
- A digital report and digital archive dataset will be provided to Royal Commission on Ancient and Historic Monuments, Wales (final report only), in accordance with the *RCAHMW Guidelines for Digital Archives Version 1*. The dataset will be prepared in the format required by RCAHMW and will include:
 - Photographic metadata (Microsoft Access);
 - Photographic archive (TIFF format);
 - Project Information form (Excel);
 - File Information form (Excel) – Microsoft Word report text final;
 - File Information form (Excel) – Photographic metadata (general);
 - File Information form (Excel) – Adobe PDF report final; and
 - File Information form (Excel) - Photographic metadata (detail).

3 PERSONNEL

The project will be managed by John Roberts, Principal Archaeologist GAT Contracts Section and undertaken by a Project Archaeologist. The Project Archaeologist will be responsible for the completion of all on site pro-formas and the photographic archive, as well as for submitting a draft final report for project manager review and approval. The report will then be submitted as per the arrangements defined above.

4 HEALTH AND SAFETY

A site-specific risk assessment will be prepared and will be reviewed by the GAT Project Archaeologist in advance of works, with any additional risks identified on site highlighted in the dynamic risks section and appropriate mitigation undertaken. The GAT attendee will be issued with required personal safety equipment, including high visibility jacket, steel toe-capped boots and safety helmet. All site work will be managed and undertaken in accordance with the GAT Health & Safety Policy.

5 SOCIAL MEDIA

One of the key aims in the GAT mission statement is to improve the understanding, conservation and promotion of the historic environment in our area and inform and educate the wider public. To help achieve this, GAT maintains an active social media presence and seeks all opportunities to promote our projects and results. With permission, GAT would like the opportunity to promote our work on this scheme through our social media platforms. This could include social media postings during our attendance on site as well as any postings to highlight results. In all instances, approval will be sought from client prior to any postings.

6 INSURANCE

6.1 Public/Products Liability

Limit of Indemnity- £5,000,000 any one event in respect of Public Liability

INSURER Aviva Insurance Limited

POLICY TYPE Public Liability

POLICY NUMBER 24765101CHC/UN/000375

EXPIRY DATE 21/06/2022

6.2 Employers Liability

Limit of Indemnity- £10,000,000 any one occurrence.

The cover has been issued on the insurers standard policy form and is subject to their usual terms and conditions. A copy of the policy wording is available on request.

INSURER Aviva Insurance Limited

POLICY TYPE Employers Liability

POLICY NUMBER 24765101 CHC / UN/000375

EXPIRY DATE 21/06/2022

6.3 Professional Indemnity

Limit of Indemnity- £5,000,000 in respect of each and every claim

INSURER Hiscox Insurance Company Limited

POLICY TYPE Professional Indemnity

POLICY NUMBER PL-PSC10002389775/00

EXPIRY DATE 22/07/2022

7 SOURCES CONSULTED

1. Chartered Institute for Archaeologists, 2020, Standard and Guidance for the Archaeological Investigation and Recording of Standing Buildings or Structures
2. Chartered Institute for Archaeologists, 2020, Standard and guidance for the collection, documentation, conservation and research of archaeological materials
3. English Heritage, 1991, Management of Archaeological Projects (MAP2)
4. Historic England, 2015, Management of Research Projects in the Historic Environment (MoRPHE)
5. Historic England, 2016. *Understanding Historic Buildings: A Guide to Good Recording Practice*
6. Royal Commission on Ancient and Historic Monuments of Wales, 2015, Guidelines for digital archives
7. The Welsh Archaeological Trusts, 2022. *Guidance for the Submission of Data to the Welsh Historic Environment Records (HERs) Version 2.*

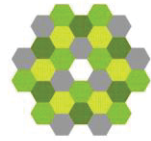
FIGURE 01

Site Location. Based on Client Ordnance Survey Land Registry Map Sheet SH95. Scale 1:1250@A4.

New boundary -

Land Registry
Current title plan

Title number **CYM679592**
Ordnance Survey map reference **SH9531SW**
Scale **1:1250 enlarged from 1:10000**
Administrative area **Gwynedd**



© Crown copyright and database rights 2016 Ordnance Survey 100026316. You are not permitted to copy, sub-license, distribute or sell any of this data to third parties in any form.

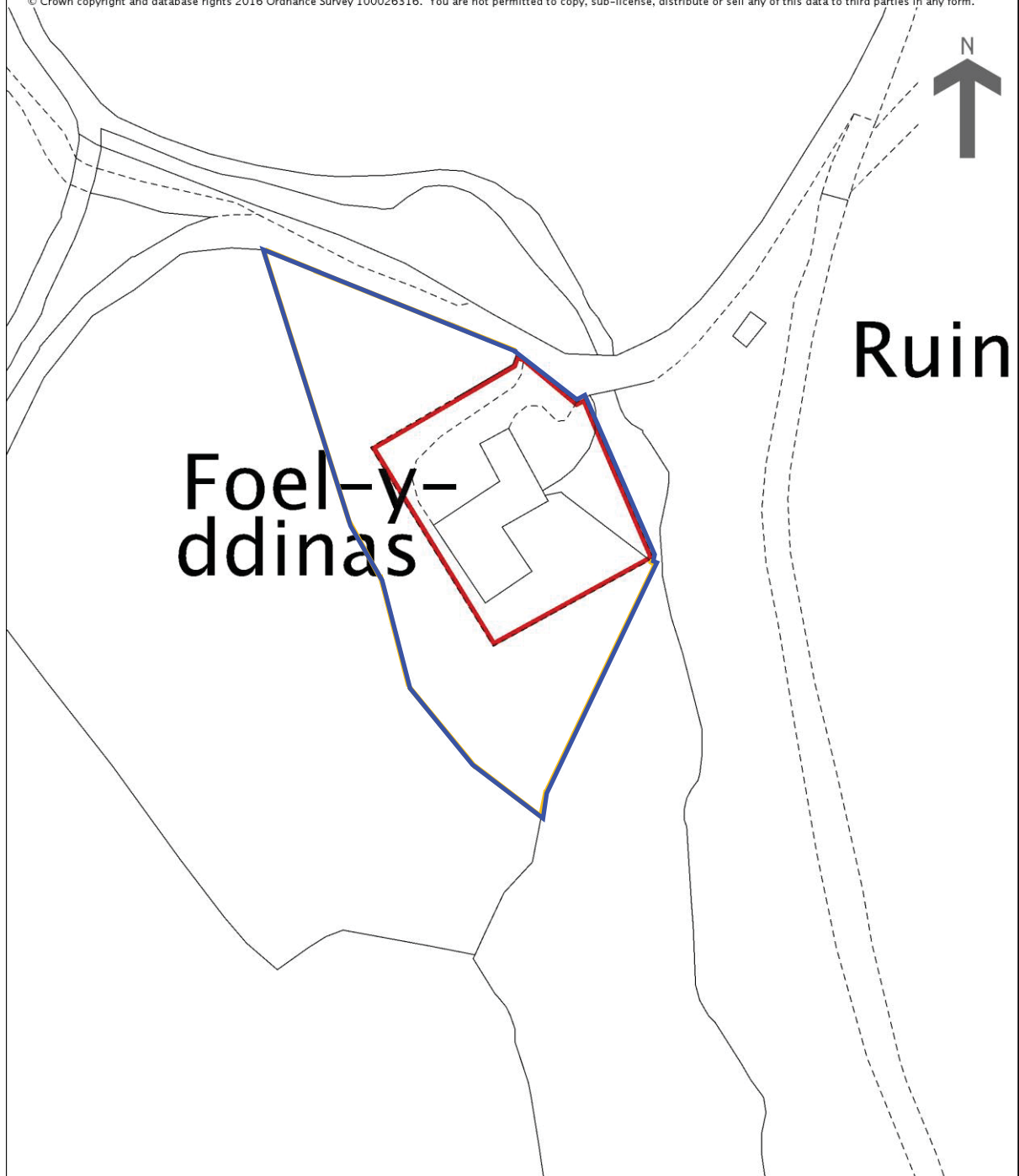
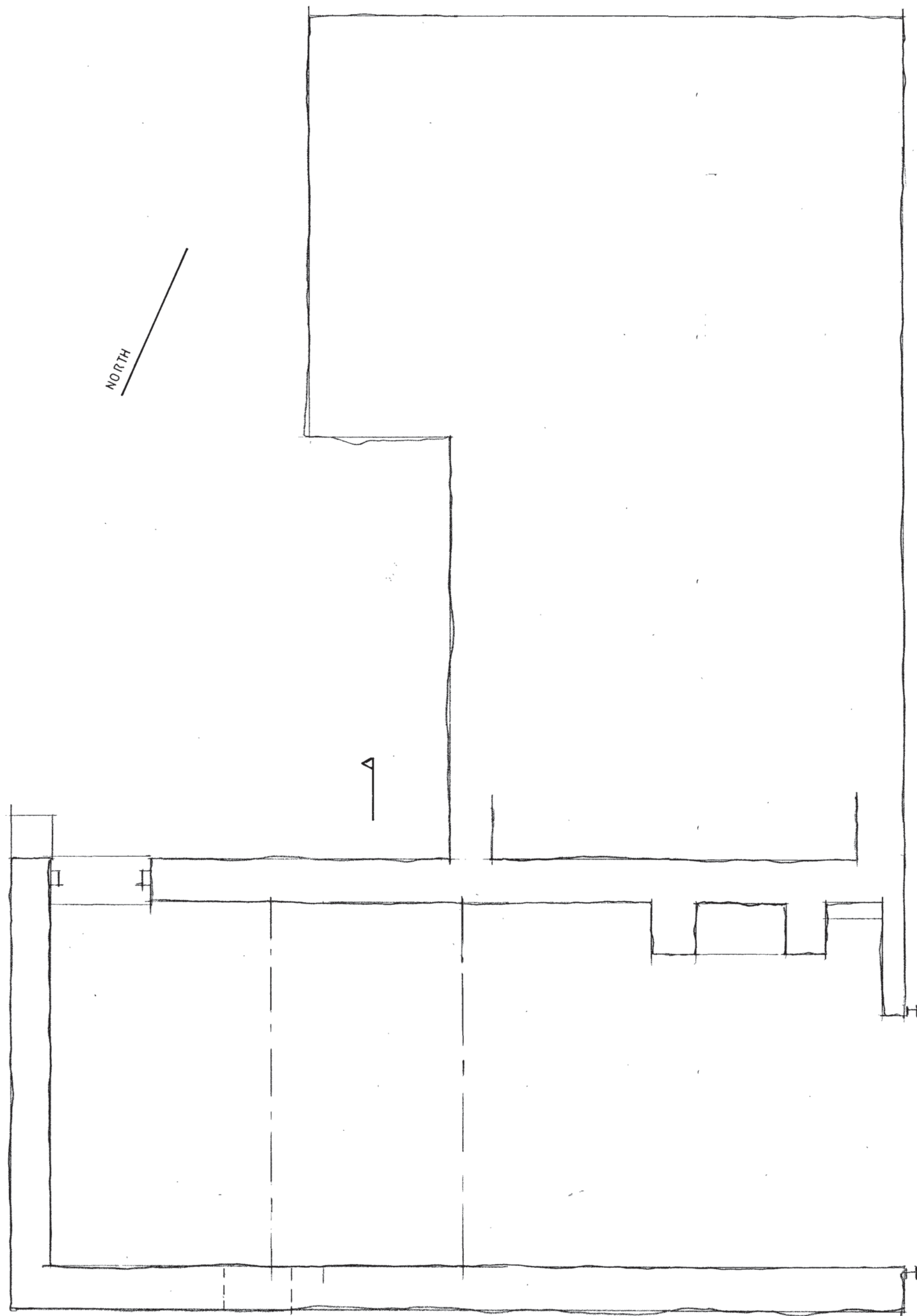


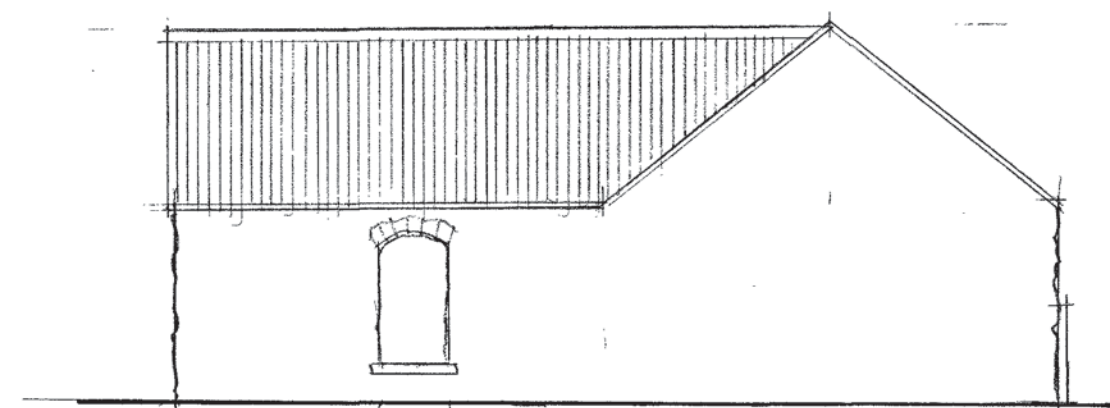
FIGURE 02

Reproduction of Gruffydd Price drawing 01 job 1824. Scale: 1:50 and 1:100@A2

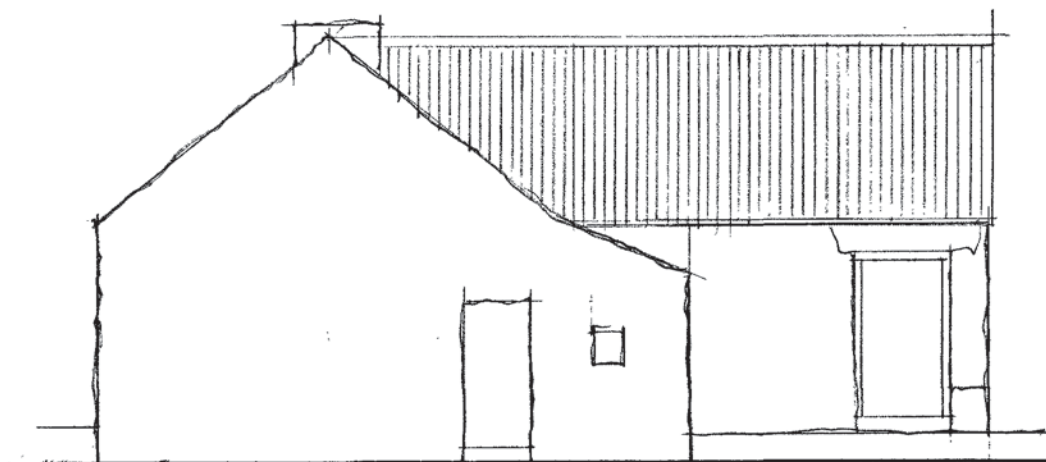
NORTH



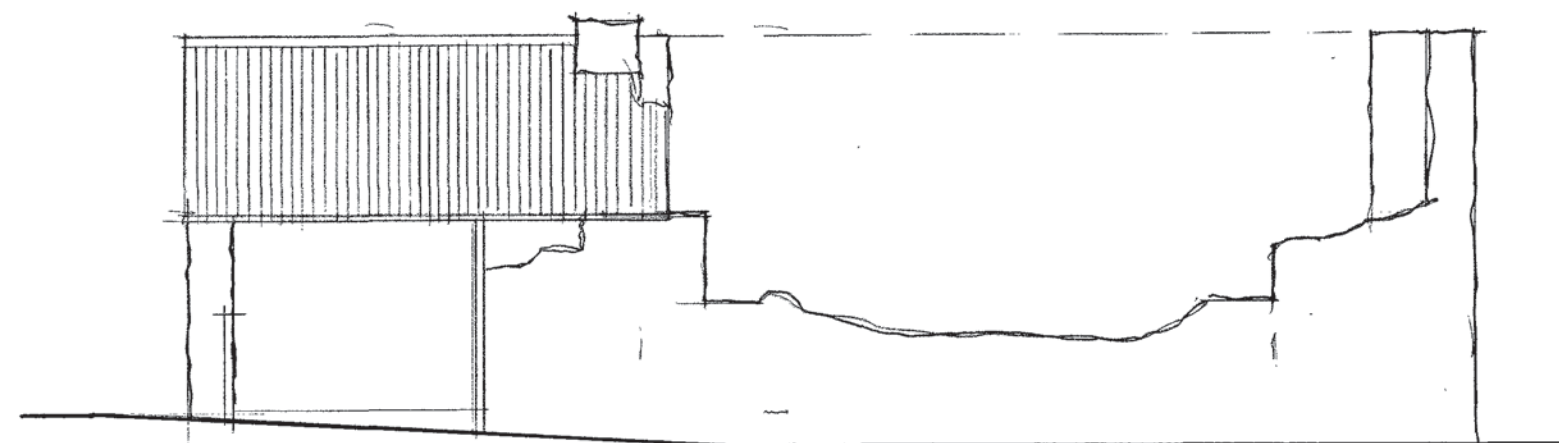
FLOOR PLAN



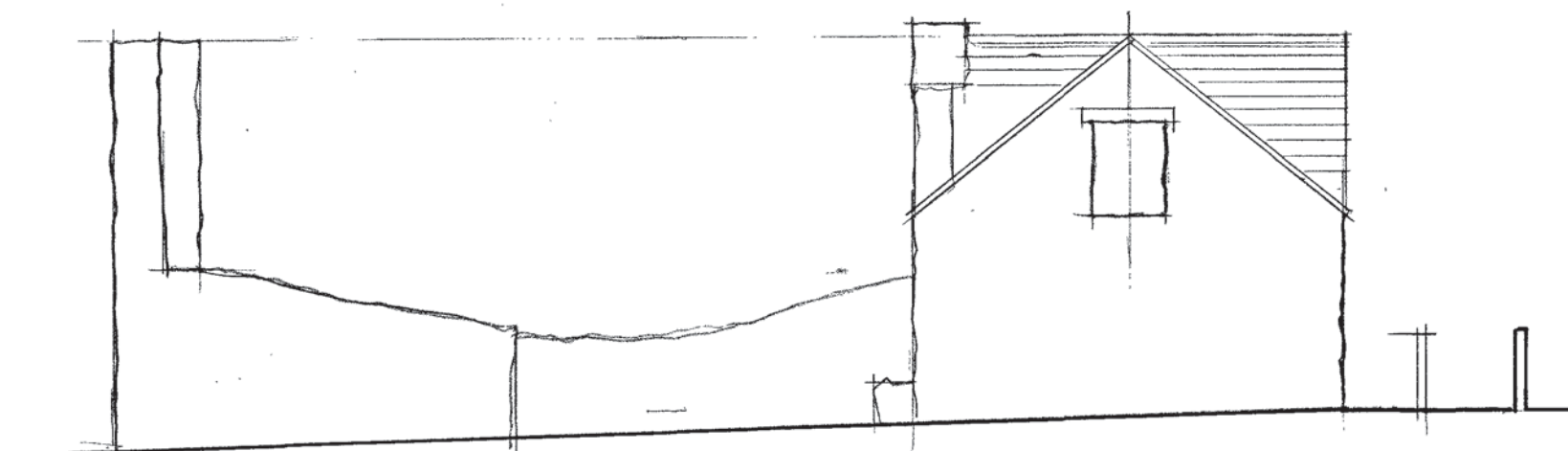
SOUTH ELEVATION



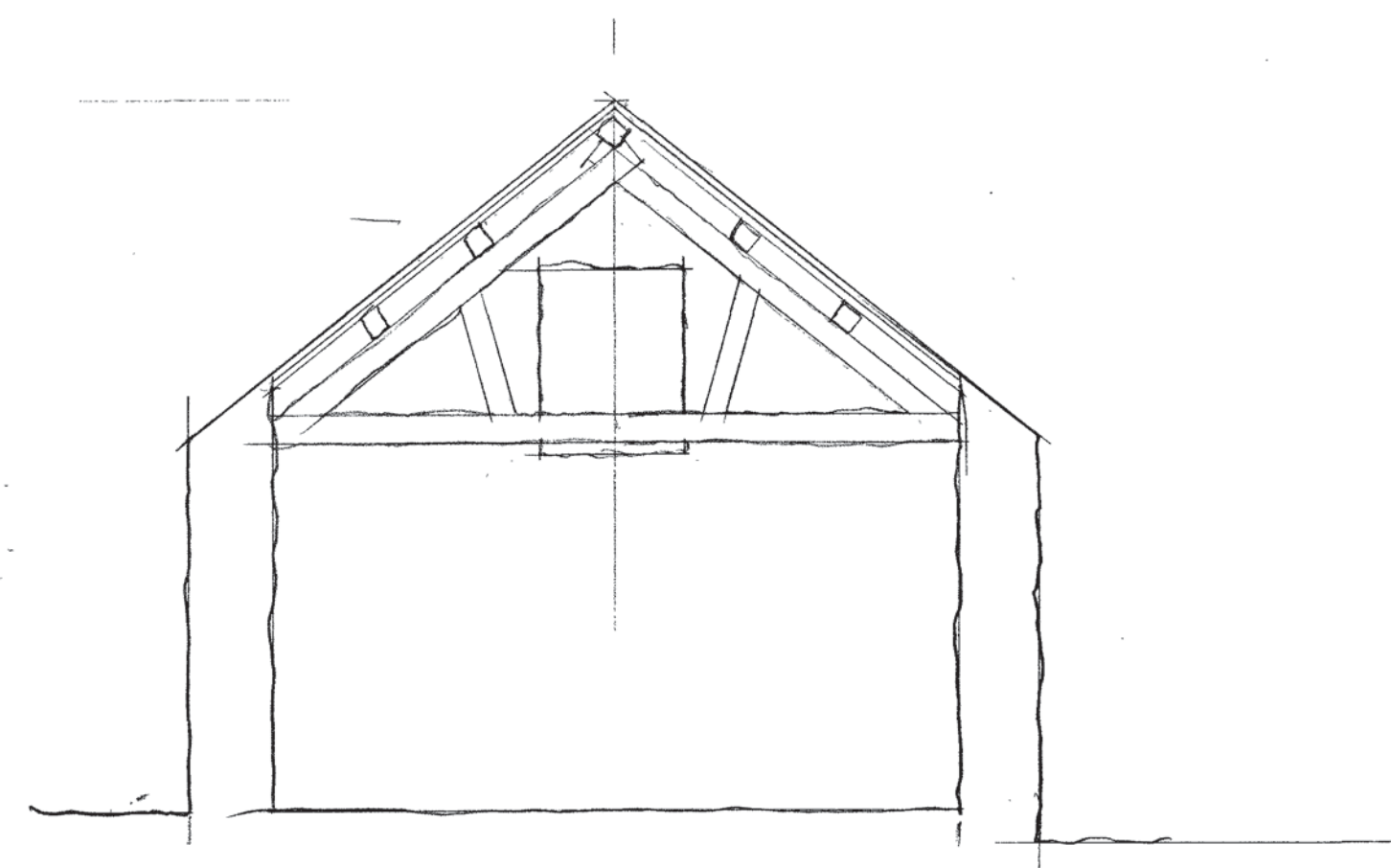
NORTH ELEVATION



EAST ELEVATION



WEST ELEVATION



SECTION

AMENDMENTS

No	Date	By
----	------	----

Do not scale this drawing
Architects to be notified of
discrepancies in figured dimensions
Contractors must check all
dimensions from site
This drawing is copyright

Job
PROPOSED BARN CONVERSION
MOEL DDINAS
RHOSYGWALIAU BALA

Title
PLANS AS
EXISTING

Job	Drawing
1824	01
Issue	

Scale 1:50, 1:100 @ A2

Drawn  Date 191120

Gruffydd Price R.I.B.A.
Gwylfa
Llanbedr
Meirion, Gwynedd, LL45 2LW
TEL: (01341) 241448

APPENDIX I

Gwynedd Archaeological Trust Building Record pro-forma

YMDDIRIEDOLAETH ARCHAEOLEGOL GWYNEDD ARCHAEOLOGICAL TRUST		
BASIC RECORDING FORM	Project name	Project number
Feature name		Feature Number
NGR		
Description		
Recommendations for further assessment		
Photographic record numbers		
Digital		
	Visit date	Visit by

APPENDIX II

Gwynedd Archaeological Trust room recordoring pro-forma

NOTE: Sketch entire floor level with measurements (overleaf)

YMDDIRIEDOLAETH ARCHAEOLEGOL GWYNEDD ARCHAEOLOGICAL TRUST			
ROOM RECORDING FORM		Project name	Project number
Room Number	Floor /Level		
Description			
Photographic record numbers		Scales used	Dimensions Length Width Height
YMDDIRIEDOLAETH ARCHAEOLEGOL GWYNEDD ARCHAEOLOGICAL TRUST			
ROOM RECORDING FORM		Project name	Project number
Room Number	Floor /Level		
Description			
Photographic record numbers		Scales used	Dimensions Length Width Height

	<i>Visit date</i>	<i>Visit by</i>

APPENDIX III

Gwynedd Archaeological Trust Photographic Metadata Pro-Forma



Digital Photographic Record

Include main context numbers for each shot, drawing numbers for sections and any other relevant numbers for cross referencing.

Delete any unwanted photos **immediately** from the camera.

Regularly upload photographs to computer.

[illegible]

APPENDIX IV

Gwynedd Archaeological Trust Selection Strategy

G2773_Cefnhirfynydd_Uchaf

07/02/2023 v1.0

Selection Strategy

Project Information

Project Management

Project Manager	John Roberts john.roberts@heneb.co.uk
Archaeological Archive Manager	John Roberts john.roberts@heneb.co.uk
Organisation	Gwynedd Archaeological Trust

Stakeholders		Date Contacted
Collecting Institution(s)	Gwynedd Archaeological Trust Historic Environment Record	31/03/2023
	RCAHMW	On completion of Project Archive
Project Lead / Project Assurance	Tom Fildes, Development Control Archaeologist Gwynedd Archaeological Trust	tbc
Landowner / Developer	Mr. & Mrs. Ceri and Mark Katz	n/a

Resources

Resources required Describe the resources required to implement this Selection Strategy, particularly if unusual resources are required.	No unusual resources required outside of GAT normal operating equipment and personnel.
--	--

Context

The full aims and objectives of this project are detailed in the project specific WSI.

Gwynedd Archaeological Trust (GAT) has been commissioned by Mr & Mrs Ceri and Mark Katz to undertake archaeological mitigation prior to the conversion of a former agricultural barn in to an affordable dwelling at Moel Ddinas, Rhosygwalia, Y Bala, LL23 7EY (SH 95235 31196) (Figure 01). The building is a stone-built structure with blocked up openings, corrugated roof and timbers of an unknown date (Figure 02). Moel Y Ddinas is listed in the regional Historic Environment Record as Primary Reference Number (PRN) 81780 and described as being marked on the Ordnance Survey first edition map of 1888.

The internal and external alterations will be undertaken in accordance with consent ref. NP5/70/146A, Condition 5, which states:

Prior to any work commencing on the building a full photographic record of the building shall be undertaken in accordance with the guidance in Gwynedd Archaeological Planning Service Requirements for General Photographic Surveys of Buildings 2010 and approved by the Local Planning Authority.

The archaeological mitigation will be undertaken in accordance with these requirements and will be commensurate to a Photographic Survey as defined in Understanding Historic Buildings: A guide to good recording practice (Historic England, 2016). A Photographic Survey provides a very full visual record, but without a written or drawn survey at a comparable level of detail.

Gwynedd Archaeological Trust. 2023. Moel Ddinas, Rhosygwalia (G2778): Written Scheme of Investigation for Archaeological Mitigation. Project G2778.

1 – Digital Data

Stakeholders

John Roberts (GAT Principal Archaeologist)

Selection

All digital data will be collected, stored and selected in lines with the Gwynedd Archaeological Trust (GAT) Data Management Plan located on GAT's servers (available on request).

Following the completion of the fieldwork, a working project archive will be created based on following task list;

1. Pro-formas: all cross referenced and complete;
2. Photographic Metadata: completed in *Microsoft Access* and cross-referenced with all pro-formas;

All relevant site archive data will be added to a digital project register specific to this project, which will be prepared in *Microsoft Excel*.

This data will be used as the basis for the physical and digital dataset archives. Information from these will be used to compile the project report. The physical archive will be stored in a designated project folder and the location confirmed in the Trust project database; the digital dataset will be stored on a dedicated Trust server, with the location confirmed in the Trust project database via a specific hyperlink. External datasets for the HER and RCAHMW are as defined in the dissemination strategy below. De-selected digital data will be confirmed in an updated digital management plan appended to the final report

De-Selected Digital Data

No de-selected documents

2 – Documents

Stakeholders

Name the individual(s) responsible for the Documents Selection decisions (i.e. Archaeological Archive Manager, Project Manager, Repository Representative).

John Roberts – Principal Archaeologist, Gwynedd Archaeological Trust;
Gary Duckers – Historic Environment Record, Gwynedd Archaeological Trust;
Helen Rowe - Royal Commission on Ancient and Historical Monuments of Wales.

Selection

- A digital report will be provided to the regional Historic Environment Record; this will be submitted within six months of project completion (final report only), along with a digital dataset comprising an Event PRN summary. The report and dataset have been submitted in accordance with the required standards set out in *Guidance for the Submission of Data to the Welsh Historic Environment Records (HERs)* (Version 2); and
- A digital report and digital archive dataset have been provided to the Royal Commission on Ancient and Historic Monuments, Wales (final report only), in accordance with the *RCAHMW Guidelines for Digital Archives Version 1*. The dataset will be prepared in the format required by RCAHMW and will include:
 - Photographic metadata (Microsoft Access);
 - Photographic archive (TIFF format);
 - Project Information form (Excel);
 - File Information form (Excel) – Microsoft Word report text final;
 - File Information form (Excel) – Photographic metadata (general);
 - File Information form (Excel) – Adobe PDF report final; and
 - File Information form (Excel) - Photographic metadata (detail).

De-Selected Documents

No de-selected documents

APPENDIX II

Gwynedd Archaeological Trust Photographic Metadata

PHOTO RECORD NUMBER	PROJECT NAME	PROJECT PHASE	SITE SUB- DIVISION	DESCRIPTION	VIEW FROM	SCALE(S)	CREATOR OF DIGITAL PHOTO	DATE OF CREATION OF DIGITAL PHOTO	ORIGINATING ORGANISATION	PLATE
G2778_001	Moel Ddinas	Photographic Survey	Exterior	View of exterior NE wall of cottage and large entrance to barn	NE	2x1m	Jessie Baumgardner	19/04/2023	Gwynedd Archaeological Trust	1
G2778_002	Moel Ddinas	Photographic Survey	Exterior	Oblique view of barn and cottage from the E corner, exterior	E	2x1m	Jessie Baumgardner	19/04/2023	Gwynedd Archaeological Trust	2
G2778_003	Moel Ddinas	Photographic Survey	Exterior	View of exterior SE wall of barn, showing window infilled with stone	SE	1x1m	Jessie Baumgardner	19/04/2023	Gwynedd Archaeological Trust	3
G2778_004	Moel Ddinas	Photographic Survey	Exterior	Oblique view of S corner of barn with corner of cottage in background	S	1x1m	Jessie Baumgardner	19/04/2023	Gwynedd Archaeological Trust	4
G2778_005	Moel Ddinas	Photographic Survey	Exterior	View of exterior SW wall of cottage and barn, showing window of barn	SW	1x1m	Jessie Baumgardner	19/04/2023	Gwynedd Archaeological Trust	5
G2778_006	Moel Ddinas	Photographic Survey	Exterior	Oblique view of NW corner of cottage and barn, showing door into barn	NW	1x1m	Jessie Baumgardner	19/04/2023	Gwynedd Archaeological Trust	6
G2778_007	Moel Ddinas	Photographic Survey	Exterior	View of N wall of cottage showing door into cottage, with barn in background	N	2x1m	Jessie Baumgardner	19/04/2023	Gwynedd Archaeological Trust	7
G2778_008	Moel Ddinas	Photographic Survey	Exterior	Oblique view of N corner of cottage showing collapsed wall	N	2x1m	Jessie Baumgardner	19/04/2023	Gwynedd Archaeological Trust	8
G2778_009	Moel Ddinas	Photographic Survey	Exterior	View of NE corner of cottage showing fireplace beam	NE	1x1m	Jessie Baumgardner	19/04/2023	Gwynedd Archaeological Trust	9

PHOTO RECORD NUMBER	PROJECT NAME	PROJECT PHASE	SITE SUB- DIVISION	DESCRIPTION	VIEW FROM	SCALE(S)	CREATOR OF DIGITAL PHOTO	DATE OF CREATION OF DIGITAL PHOTO	ORIGINATING ORGANISATION	PLATE
G2778_010	Moel Ddinas	Photographic Survey	Exterior	View of large entrance into barn	NE	1x1m	Jessie Baumgardner	19/04/2023	Gwynedd Archaeological Trust	10
G2778_011	Moel Ddinas	Photographic Survey	Exterior	Infilled ventilation slit in SE wall of barn	SE	0.10 m	Jessie Baumgardner	19/04/2023	Gwynedd Archaeological Trust	11
G2778_012	Moel Ddinas	Photographic Survey	Exterior	Close-up of infilled ventilation slit in SE wall of barn	SE	0.10 m	Jessie Baumgardner	19/04/2023	Gwynedd Archaeological Trust	12
G2778_013	Moel Ddinas	Photographic Survey	Exterior	Close-up of window infilled with stone in SE wall of barn	SE	1x1m	Jessie Baumgardner	19/04/2023	Gwynedd Archaeological Trust	13
G2778_014	Moel Ddinas	Photographic Survey	Exterior	Close-up of window with concrete lintels and roof of barn	S	not used	Jessie Baumgardner	19/04/2023	Gwynedd Archaeological Trust	14
G2778_015	Moel Ddinas	Photographic Survey	Exterior	View of doorway into barn	NW	1x1m	Jessie Baumgardner	19/04/2023	Gwynedd Archaeological Trust	15
G2778_016	Moel Ddinas	Photographic Survey	Exterior	View of blocked up doorway into cottage	SW	1x1m	Jessie Baumgardner	19/04/2023	Gwynedd Archaeological Trust	16
G2778_017	Moel Ddinas	Photographic Survey	Exterior	View of collapsed SW wall of cottage and fireplace within	SW	1x1m	Jessie Baumgardner	19/04/2023	Gwynedd Archaeological Trust	17
G2778_018	Moel Ddinas	Photographic Survey	Exterior	View of doorway into cottage and adjacent window	NW	1x1m	Jessie Baumgardner	19/04/2023	Gwynedd Archaeological Trust	18

PHOTO RECORD NUMBER	PROJECT NAME	PROJECT PHASE	SITE SUB-DIVISION	DESCRIPTION	VIEW FROM	SCALE(S)	CREATOR OF DIGITAL PHOTO	DATE OF CREATION OF DIGITAL PHOTO	ORIGINATING ORGANISATION	PLATE
G2778_019	Moel Ddinas	Photographic Survey	Exterior	Close-up of window with sheet metal	NW	not used	Jessie Baumgardner	19/04/2023	Gwynedd Archaeological Trust	19
G2778_020	Moel Ddinas	Photographic Survey	Exterior	View of collapsed NE wall of cottage and fireplace within	NE	1x1m	Jessie Baumgardner	19/04/2023	Gwynedd Archaeological Trust	20
G2778_021	Moel Ddinas	Photographic Survey	Exterior	Close-up of metal pins for gate in large entrance to barn	N	not used	Jessie Baumgardner	19/04/2023	Gwynedd Archaeological Trust	21
G2778_022	Moel Ddinas	Photographic Survey	Interior Barn	View of large fireplace inside barn	S	1x1m	Jessie Baumgardner	19/04/2023	Gwynedd Archaeological Trust	22
G2778_023	Moel Ddinas	Photographic Survey	Interior Barn	View behind fireplace showing it is not attached to the wall of the barn	SW	1x1m	Jessie Baumgardner	19/04/2023	Gwynedd Archaeological Trust	23
G2778_024	Moel Ddinas	Photographic Survey	Interior Barn	View of line between barn and cottage gable end, showing cottage is older	S	1x1m	Jessie Baumgardner	19/04/2023	Gwynedd Archaeological Trust	24
G2778_025	Moel Ddinas	Photographic Survey	Interior Barn	View out of the barn doorway	S	1x1m	Jessie Baumgardner	19/04/2023	Gwynedd Archaeological Trust	25
G2778_026	Moel Ddinas	Photographic Survey	Interior Barn	Close-up of old barn door	S	1x1m	Jessie Baumgardner	19/04/2023	Gwynedd Archaeological Trust	26
G2778_027	Moel Ddinas	Photographic Survey	Interior Barn	View of window infilled with stone	N	1x1m	Jessie Baumgardner	19/04/2023	Gwynedd Archaeological Trust	27

PHOTO RECORD NUMBER	PROJECT NAME	PROJECT PHASE	SITE SUB- DIVISION	DESCRIPTION	VIEW FROM	SCALE(S)	CREATOR OF DIGITAL PHOTO	DATE OF CREATION OF DIGITAL PHOTO	ORIGINATING ORGANISATION	PLATE
G2778_028	Moel Ddinas	Photographic Survey	Interior Barn	Close-up view of graffiti in fireplace lintel "David Shepherd"	S	0.10 m	Jessie Baumgardner	19/04/2023	Gwynedd Archaeological Trust	28
G2778_029	Moel Ddinas	Photographic Survey	Interior Barn	View of trussed roof inside barn	E	not used	Jessie Baumgardner	19/04/2023	Gwynedd Archaeological Trust	29
G2778_030	Moel Ddinas	Photographic Survey	Interior Barn	View of trussed roof inside barn showing collapse	E	not used	Jessie Baumgardner	19/04/2023	Gwynedd Archaeological Trust	30
G2778_031	Moel Ddinas	Photographic Survey	Interior Barn	View of trussed roof inside barn	SW	not used	Jessie Baumgardner	19/04/2023	Gwynedd Archaeological Trust	31
G2778_032	Moel Ddinas	Photographic Survey	Interior Barn	Close-up of wooden pegs in trussed roof	SW	not used	Jessie Baumgardner	19/04/2023	Gwynedd Archaeological Trust	32
G2778_033	Moel Ddinas	Photographic Survey	Interior Barn	View of collapsed roof above fireplace in barn	S	not used	Jessie Baumgardner	19/04/2023	Gwynedd Archaeological Trust	33
G2778_034	Moel Ddinas	Photographic Survey	Interior Barn	View into barn from large entrance showing roof trusses	E	not used	Jessie Baumgardner	19/04/2023	Gwynedd Archaeological Trust	34
G2778_035	Moel Ddinas	Photographic Survey	Interior Barn	View of trussed roof in barn	SW	not used	Jessie Baumgardner	19/04/2023	Gwynedd Archaeological Trust	35
G2778_036	Moel Ddinas	Photographic Survey	Interior Cottage	View of large fireplace in N wall of cottage	SE	1x1m	Jessie Baumgardner	19/04/2023	Gwynedd Archaeological Trust	36

PHOTO RECORD NUMBER	PROJECT NAME	PROJECT PHASE	SITE SUB-DIVISION	DESCRIPTION	VIEW FROM	SCALE(S)	CREATOR OF DIGITAL PHOTO	DATE OF CREATION OF DIGITAL PHOTO	ORIGINATING ORGANISATION	PLATE
G2778_037	Moel Ddinas	Photographic Survey	Interior Cottage	View out of the door and window into the cottage	S	1x1m	Jessie Baumgardner	19/04/2023	Gwynedd Archaeological Trust	37
G2778_038	Moel Ddinas	Photographic Survey	Interior Cottage	Close-up of cottage window	SE	not used	Jessie Baumgardner	19/04/2023	Gwynedd Archaeological Trust	38
G2778_039	Moel Ddinas	Photographic Survey	Interior Cottage	Obilque view of fireplace and door leading out of cottage	SE	1x1m	Jessie Baumgardner	19/04/2023	Gwynedd Archaeological Trust	39
G2778_040	Moel Ddinas	Photographic Survey	Interior Cottage	Close-up view of fireplace showing first floor fireplace above and small alcove in the right hand corner	SE	1x1m	Jessie Baumgardner	19/04/2023	Gwynedd Archaeological Trust	40
G2778_041	Moel Ddinas	Photographic Survey	Interior Cottage	View of inside of cottage from the fireplace	NW	1x1m	Jessie Baumgardner	19/04/2023	Gwynedd Archaeological Trust	41
G2778_042	Moel Ddinas	Photographic Survey	Interior Cottage	View of SE gable end of cottage	NW	1x1m	Jessie Baumgardner	19/04/2023	Gwynedd Archaeological Trust	42
G2778_043	Moel Ddinas	Photographic Survey	Interior Cottage	View of blocked up doorway into cottage	NE	1x1m	Jessie Baumgardner	19/04/2023	Gwynedd Archaeological Trust	43
G2778_044	Moel Ddinas	Photographic Survey	Interior Cottage	Close-up view of wooden beam protruding from SE gable end of the cottage	N	not used	Jessie Baumgardner	19/04/2023	Gwynedd Archaeological Trust	44
G2778_045	Moel Ddinas	Photographic Survey	Interior Cottage	View of wooden beams in the top of SE gable end	NW	not used	Jessie Baumgardner	19/04/2023	Gwynedd Archaeological Trust	45

PHOTO RECORD NUMBER	PROJECT NAME	PROJECT PHASE	SITE SUB- DIVISION	DESCRIPTION	VIEW FROM	SCALE(S)	CREATOR OF DIGITAL PHOTO	DATE OF CREATION OF DIGITAL PHOTO	ORIGINATING ORGANISATION	PLATE
G2778_046	Moel Ddinas	Photographic Survey	Interior Cottage	View of interior of cottage showing fireplace	SE	1x1m	Jessie Baumgardner	19/04/2023	Gwynedd Archaeological Trust	46
G2778_047	Moel Ddinas	Photographic Survey	Interior Cottage	View of SW wall of the cottage showing collapse	NE	1x1m	Jessie Baumgardner	19/04/2023	Gwynedd Archaeological Trust	47
G2778_048	Moel Ddinas	Photographic Survey	Interior Cottage	View of SW wall of the cottage showing collapse	N	1x1m	Jessie Baumgardner	19/04/2023	Gwynedd Archaeological Trust	48
G2778_049	Moel Ddinas	Photographic Survey	Interior Cottage	View of the NE wall of the cottage showing collapse, large concrete block	W	1x1m	Jessie Baumgardner	19/04/2023	Gwynedd Archaeological Trust	49
G2778_050	Moel Ddinas	Photographic Survey	Interior Cottage	View of the NE wall of the cottage showing collapse, large concrete block	W	1x1m	Jessie Baumgardner	19/04/2023	Gwynedd Archaeological Trust	50
G2778_051	Moel Ddinas	Photographic Survey	Interior Cottage	Close-up of metal Victorian bedframe under collapsed stones	NW	not used	Jessie Baumgardner	19/04/2023	Gwynedd Archaeological Trust	51
G2778_052	Moel Ddinas	Photographic Survey	Interior Cottage	View up into fireplace chimney in cottage	E	not used	Jessie Baumgardner	19/04/2023	Gwynedd Archaeological Trust	52
G2778_053	Moel Ddinas	Photographic Survey	Interior Cottage	View up into fireplace chimney in cottage, showing collapsing beam	E	not used	Jessie Baumgardner	19/04/2023	Gwynedd Archaeological Trust	53
G2778_054	Moel Ddinas	Photographic Survey	Interior Cottage	Close-up of alcove and metal bar in fireplace	SE	not used	Jessie Baumgardner	19/04/2023	Gwynedd Archaeological Trust	54

PHOTO RECORD NUMBER	PROJECT NAME	PROJECT PHASE	SITE SUB- DIVISION	DESCRIPTION	VIEW FROM	SCALE(S)	CREATOR OF DIGITAL PHOTO	DATE OF CREATION OF DIGITAL PHOTO	ORIGINATING ORGANISATION	PLATE
G2778_055	Moel Ddinas	Photographic Survey	Interior Cottage	Close-up of wooden fireplace lintel	SW	not used	Jessie Baumgardner	19/04/2023	Gwynedd Archaeological Trust	55
G2778_056	Moel Ddinas	Photographic Survey	Interior Cottage	Close-up of carving in lintel and wooden addition	S	not used	Jessie Baumgardner	19/04/2023	Gwynedd Archaeological Trust	56
G2778_057	Moel Ddinas	Photographic Survey	Exterior	View of site in wider landscape context including farm yard	NW	not used	Jessie Baumgardner	19/04/2023	Gwynedd Archaeological Trust	57
G2778_058	Moel Ddinas	Photographic Survey	Exterior	View of site in wider landscape context including farm yard, slightly closer	NW	not used	Jessie Baumgardner	19/04/2023	Gwynedd Archaeological Trust	58
G2778_059	Moel Ddinas	Photographic Survey	Exterior	View of site in wider landscape context from the S	S	not used	Jessie Baumgardner	19/04/2023	Gwynedd Archaeological Trust	59
G2778_060	Moel Ddinas	Photographic Survey	Exterior	View of site in wider landscape context from the S, showing adjacent hill	S	not used	Jessie Baumgardner	19/04/2023	Gwynedd Archaeological Trust	60
G2778_061	Moel Ddinas	Photographic Survey	Exterior	View of site in wider landscape context with drystone wall in the foreground	SE	not used	Jessie Baumgardner	19/04/2023	Gwynedd Archaeological Trust	61
G2778_062	Moel Ddinas	Photographic Survey	Exterior	View of site in landscape with nearby small ruined building	NE	not used	Jessie Baumgardner	19/04/2023	Gwynedd Archaeological Trust	62
G2778_063	Moel Ddinas	Photographic Survey	Exterior	View of site from road with river adjacent	NE	not used	Jessie Baumgardner	19/04/2023	Gwynedd Archaeological Trust	63

PHOTO RECORD NUMBER	PROJECT NAME	PROJECT PHASE	SITE SUB- DIVISION	DESCRIPTION	VIEW FROM	SCALE(S)	CREATOR OF DIGITAL PHOTO	DATE OF CREATION OF DIGITAL PHOTO	ORIGINATING ORGANISATION	PLATE
G2778_064	Moel Ddinas	Photographic Survey	Exterior	View of nearby small ruined building with collapsed roof	S	not used	Jessie Baumgardner	19/04/2023	Gwynedd Archaeological Trust	64
G2778_065	Moel Ddinas	Photographic Survey	Exterior	View of site from the road showing drystone wall	N	not used	Rob Evans	19/04/2023	Gwynedd Archaeological Trust	65

APPENDIX III

Gwynedd Archaeological Trust Selection Strategy

G2778_Moel_Ddinas

19/04/2023 v2.0

Selection Strategy

Project Information

Project Management

Project Manager	John Roberts john.roberts@heneb.co.uk	
Archaeological Archive Manager	John Roberts john.roberts@heneb.co.uk	
Organisation	Gwynedd Archaeological Trust	
Stakeholders		Date Contacted
Collecting Institution(s)	Gwynedd Archaeological Trust Historic Environment Record	04/04/2023
	RCAHMW	On completion of Project Archive
Project Lead / Project Assurance	Tom Fildes, Development Control Archaeologist Gwynedd Archaeological Trust	04/04/2023
Landowner / Developer	Mr. & Mrs. Ceri and Mark Katz	n/a

Resources

Resources required Describe the resources required to implement this Selection Strategy, particularly if unusual resources are required.	No unusual resources required outside of GAT normal operating equipment and personnel.
--	--

Context

The full aims and objectives of this project are detailed in the project specific WSI.

Gwynedd Archaeological Trust (GAT) has been commissioned by Mr & Mrs Ceri and Mark Katz to undertake archaeological mitigation prior to the conversion of a former agricultural barn in to an affordable dwelling at Moel Ddinas, Rhosygwalia, Y Bala, LL23 7EY (SH 95235 31196) (Figure 01). The building is a stone-built structure with blocked up openings, corrugated roof and timbers of an unknown date (Figure 02). Moel Y Ddinas is listed in the regional Historic Environment Record as Primary Reference Number (PRN) 81780 and described as being marked on the Ordnance Survey first edition map of 1888.

The internal and external alterations has been undertaken in accordance with consent ref. NP5/70/146A, Condition 5, which states:

Prior to any work commencing on the building a full photographic record of the building shall be undertaken in accordance with the guidance in Gwynedd Archaeological Planning Service Requirements for General Photographic Surveys of Buildings 2010 and approved by the Local Planning Authority.

The archaeological mitigation has been undertaken in accordance with these requirements and has been commensurate to a Photographic Survey as defined in Understanding Historic Buildings: A guide to good recording practice (Historic England, 2016). A Photographic Survey provides a very full visual record, but without a written or drawn survey at a comparable level of detail.

Gwynedd Archaeological Trust. 2023. Moel Ddinas, Rhosygwalia (G2778): Written Scheme of Investigation for Archaeological Mitigation. Project G2778.

1 – Digital Data

Stakeholders

John Roberts (GAT Principal Archaeologist)

Selection

All digital data has been collected, stored and selected in lines with the Gwynedd Archaeological Trust (GAT) Data Management Plan located on GAT's servers (available on request).

Following the completion of the fieldwork, a working project archive has been created based on following task list;

1. Pro-formas: all cross referenced and complete;
2. Photographic Metadata: completed in *Microsoft Access* and cross-referenced with all pro-formas;

All relevant site archive data has been added to a digital project register specific to this project, which has been prepared in *Microsoft Excel*.

This data has been used as the basis for the physical and digital dataset archives. Information from these has been used to compile the project report. The physical archive has been stored in a designated project folder and the location confirmed in the Trust project database; the digital dataset has been stored on a dedicated Trust server, with the location confirmed in the Trust project database via a specific hyperlink. External datasets for the HER and RCAHMW are as defined in the dissemination strategy below. De-selected digital data has been confirmed in an updated digital management plan appended to the final report

De-Selected Digital Data

No de-selected documents

2 – Documents

Stakeholders

Name the individual(s) responsible for the Documents Selection decisions (i.e. Archaeological Archive Manager, Project Manager, Repository Representative).

John Roberts – Principal Archaeologist, Gwynedd Archaeological Trust;
Gary Duckers – Historic Environment Record, Gwynedd Archaeological Trust;
Helen Rowe - Royal Commission on Ancient and Historical Monuments of Wales.

Selection

- A digital report has been provided to the regional Historic Environment Record; this has been submitted within six months of project completion (final report only), along with a digital dataset comprising an Event PRN summary. The report and dataset have been submitted in accordance with the required standards set out in *Guidance for the Submission of Data to the Welsh Historic Environment Records (HERs)* (Version 2); and
- A digital report and digital archive dataset have been provided to the Royal Commission on Ancient and Historical Monuments, Wales (final report only), in accordance with the *RCAHMW Guidelines for Digital Archives Version 1*. The dataset has been prepared in the format required by RCAHMW and will include:
 - Photographic metadata (Microsoft Access);
 - Photographic archive (TIFF format);
 - Project Information form (Excel);
 - File Information form (Excel) – Microsoft Word report text final;
 - File Information form (Excel) – Photographic metadata (general);
 - File Information form (Excel) – Adobe PDF report final; and
 - File Information form (Excel) - Photographic metadata (detail).

De-Selected Documents

No de-selected documents



Gwynedd Archaeological Trust
Ymddiriedolaeth Archaeolegol Gwynedd

Craig Beuno, Ffordd y Garth, Bangor, Gwynedd. LL57 2RT
Ffon: 01248 352535. Ffacs: 01248 370925. email: gat@heneb.co.uk

