
Craig-Yr-Aderyn, Snowdonia National Park

WALKOVER SURVEY



Photograph 1 - <http://www.summitpost.org/craig-yr-aderyn/475611>

Ana Marta Anastacio

Student Number: 140124495

Contents

Summary	
1. Introduction	5
2. Location, topography and geology	5
3. Methodology	7
3.1. Aims	7
3.2. Documentary survey	7
3.3. Field survey	7
4. Archaeology and historical background	9
5. Results	10
5.1. Overall survey results	10
5.1.1. Survey sits by period	11
5.1.2. Range of site types identified	12
5.2. Discussion of sites by period	13
5.2.1. Prehistoric	13
5.2.2. Iron Age	14
5.2.3. Medieval	14
5.2.4. Post-Medieval	15
5.2.5. Post-Medieval/Modern	15
5.2.6. Modern	15
5.2.7. Unknown	17
5.3. Limitations of survey	19
6. Discussion	20
7. Bibliography	21
8. Survey data	22
9. Acknowledgments	26

Summary

An archaeological survey was undertaken at Craig-yr-Aderyn from 12th to 15th April 2015 as part of the MA Landscape Archaeology from the University of Sheffield.

The survey area was at Craig-yr-Aderyn, SH 647 066, which is a Site of Special Scientific Interest in the Unitary Authority of Gwynedd as part of the Snowdonia National Park, in Wales.

The Craig is a prominent feature in the landscape of the Dysynni Valley, between the villages of Llanegryn and Llanfihangel-y-pennant. It has a very characteristic shape and holds the only regular inland breeding colony of Cormorant birds in Wales.

The desk-based assessment identified only 2 known archaeological sites within the survey area, an Iron Age hillfort and a Prehistoric cairn. The survey identified a total of 52 sites, including the Prehistoric cairn previously recorded by aerial photograph. All the archaeological sites identified on this survey were found through walkover survey on Craig-yr-Aderyn.

The sites mainly relate to agriculture and subsistence, 30 sites, from which they comprise 11 sheepfolds, 1 farmstead, 11 cairn related sites, 3 banks of earthwork, 2 enclosures and 2 platforms. The main period is the Medieval to Post-medieval with 7 records and there are 11 records of unknown period.

All the Modern sites are related to agriculture and subsistence work, which include sheepfolds, shelters and clearance cairns.

1. Introduction

This report presents the results of upland identification survey undertaken at Craig-yr-Aderyn in 2015. The work was done as part of the module Landscape Survey from the Landscape Archaeology MA at the University of Sheffield. The survey was undertaken to identify and record archaeological features within the area of Craig-yr-Aderyn, in Snowdonia National Park, Gwynedd, Wales. The survey results also include a table of recorded sites in Table 5 of the chapter 9. A total of 52 sites were recorded.

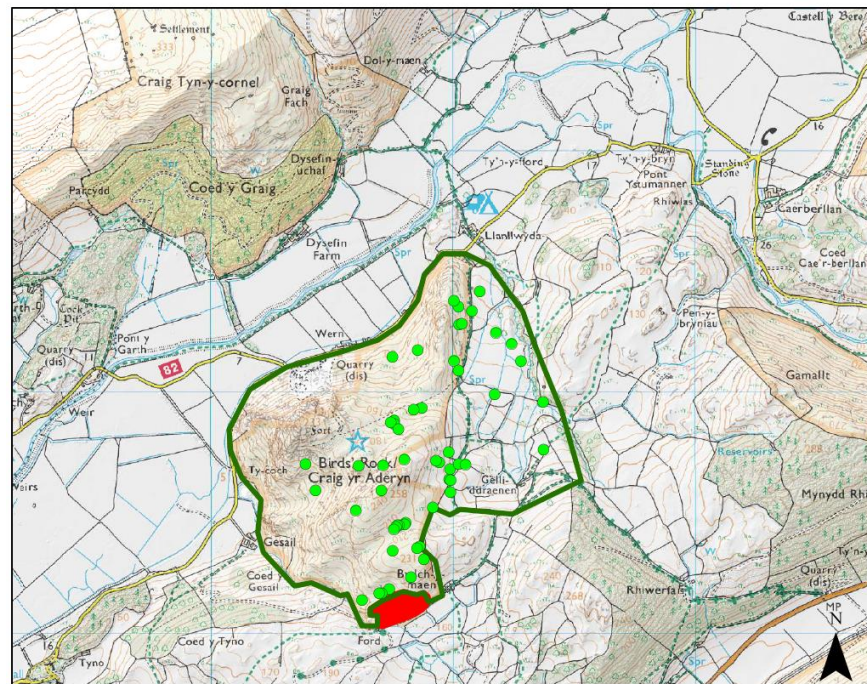
2. Location, Topography and Geology

The survey area (SH 647 066), Craig-yr-Aderyn rock, is located to the west of Cadair Idris. This rock outcrop reaches up to 258 meters above sea level and it's a prominent feature of the landscape because of its sharpness and shape. On the northeast of the rock, lies a large area of unimproved acid grassland interspersed with bracken.¹

The survey covered an area of 121.29335 ha (12100m²), this includes the Craig-yr-Aderyn rock and the fields to its East side. The underlying geology comprises *craig cau* formations and *gawen* mudstone, with some superficial deposits of *talus*.

¹ http://www.visitsnowdonia.info/craig_yr_aderyn-251.aspx

Figure 1 - Craig-yr-Aderyn Survey Area



Legend

- sites
- Survey area
- Not surveyed

0 0.5 1 Kilometers

The grassland is maintained short as its one of the feeding areas influencing the number of breeding and roosting birds.² Towards the south-eastern part of the site, there is the dominance of acidic and dry heathland.

The site is owned by various private landowners and the Snowdonia National Park Authority.

² Idem

3. Methodology

3.1. Aims

The main aim of this survey is to promote a better understanding of the landscape of Wales. To see how it changed throughout the times and how it was occupied and used. To achieve this the survey was done at Craig-yr-Aderyn to comprehend its place and importance in the Wales landscape and history.

3.2. Documentary Survey

The preliminary stage of the survey was done by a desk-based research of the Craig-yr-Aderyn area. The desk-based research had as its aim to find all the information about known archaeological sites within the area of study. This was collected through the use of the Historic Environment Record (HER), the National Monuments Records of Wales (NMRW) which provided aerial mapping of features visible from Google Earth and also aerial photographs. The historic OS maps were provided by Edina Digimap.

3.3. Field Survey

The identification survey was done by Ana Marta Anastacio (student of the MA landscape Archaeology) under the supervision of Dr. Robert Johnston. The field survey was carried out through four days, from the 12th to the 15th of April 2015. It is a Level 1 standard survey as defined by English Heritage (2007). The survey provided information on the location, type, date and condition of features, and had the aim of recording new archaeological sites. One site had already been recorded by aerial photograph so we have recorded it in detail at the same level of the others.

The field survey was undertaken by using a Lenovo Windows 8-based ThinkPad tablet, containing integral GPS with a horizontal accuracy of <10m. The survey used the ArcPad GIS program on the tablet to record the sites and to have access to the following shapefile layers:

✓ OS mapping;

- ✓ Property boundaries;
- ✓ DTM shade map;
- ✓ GAT HER sites.

Only one member was equipped with a tablet so we worked in group by tracking transects with 10m and 20m intervals according to altitude and topography. Access to the survey area was previously arranged by talking to the landowner and to the Snowdonia National Park Authority. An eight-figure grid reference has been recorded for all features, with the grid being taken at the centre of the site when possible. Digital images were taken of all the features and field sketches were made to help the written description.

The features need to be assigned a National Primary Record Number (ID/NPRN) by the RCAHMW. After the field survey, a sheet with all the data was made using Microsoft Excel.

4. Archaeological and Historical Background

Craig-yr-Aderyn rock means Bird's rock. It was named that way as it is the home to a lot of different species of birds.

It has a known Iron Age to Roman hillfort on a high point of the area and it has a predominant view of the valley.

The area of Craig-yr-Aderyn also had a known cairn site by aerial photograph, but apart from this two features there wasn't a lot known in the area.

5. Results

5.1. Overall Survey Results

A summary of the overall results is given in the Table 1 below with the number of known and surveyed sites. The survey has found a total of 52 sites in addition to the two sites already known in Craig-yr-Aderyn. The sites already known are the Craig-yr-Aderyn hillfort (SH6451306834) and a cairn (SH64700657), the last has only been recorded by aerial photograph so this survey has recorded it also. The majority were individual sites, though there were several complexes of settlement and agricultural features.

Table 1 – Total number of known and surveyed sites in Craig-yr-Aderyn

Period	Known sites (NMR/HER)	Surveyed sites
Prehistoric	1	2
Prehistoric/Medieval?	0	1
Iron Age	1	1
Medieval	0	3
Post-Medieval	0	3
Post-Medieval/Modern?	0	3
Modern	0	19
Unknown	0	21
Total	2	53

5.1.1. Survey sites by period

A list of the range sites surveyed by period is given in Table 2 below. The survey recorded 52 (98%) new sites and 53 (100%) sites in total with the addition of recording a site already known by aerial photograph. The majority of places recorded are from unknown dates (40.38%) and places from modern period (36.53%). The sites that were identified as or likely to be of prehistoric to post-medieval date form 59.62 of the surveyed sites. The distribution of sites by period is shown in the Table 2.

Table 2 - Surveyed sites by period

Period	Number	Feature Types
Prehistoric	2 (3.84%)	Cairn, platform
Prehistoric/Medieval?	1 (1.92%)	Hut circle
Iron Age	1 (1.92%)	Enclosure
Medieval	3 (5.76%)	Long hut, platform
Post-Medieval	3 (5.76%)	Farmstead, sheepfold
Post-Medieval/Modern?	3 (5.76%)	Sheepfold, wall
Modern	19 (36.53%)	Bank, building, cairn, clearance cairn, clearance, quarry, shelter, sheepfold, stone pile, terrace, wall
Unknown	21 (40.38%)	Building, clearance cairn, clearance, enclosure, platform, quarry, stone bank, structure, terrace

5.1.2. Range of site types identified

A range of site types identified during survey is given on Table 3, with number of sites recorded for each type. The largest number of sites were sheepfolds (11 sites), followed by cairns (7 sites) and, with 5 sites on each, terrace and platform sites. The largest number relates to Agriculture and Subsistence by Broad Class shown in Table 4.

Table 3 - Number of sites by type

Feature type	Number of sites
Farmstead	1
Wall	2
Terrace	5
Structure	1
Sheepfold	11
Shelter	1
Shelter/sheepfold	1
Quarry's	1
Quarry	3
Platform	5
Cairn/Cairn field	7
Bank	3
Building	2
Stone pile	1
Stone bank	1
Enclosure	2
Platform	5
Clearance cairn	4
Hut circle	1
Long hut	1
Clearance	1

Table 4 - Number of sites by broad class

Broad Class	Number of sites	Percentage (%)
Agricultural and Subsistence	28	52.83
Religious, Ritual and Funerary	1	1.88
Domestic	13	24.52
Domestic/Agriculture and Subsistence	1	1.88
Monument	2	3.77
Industrial	6	11.32
Defence	1	1.88
Unassigned	1	1.88

As seen in Table 4, the largest number of sites relate to Agriculture and Subsistence (52.83%), followed by Domestic (24.52%) and Industrial (11.32%).

5.2. Discussion of sites by period

5.2.1. Prehistoric

The number of Prehistoric sites within the survey area is quite low (2 sites). The ID 43 is located at SH6499106676. It is a circular platform, in an East facing slope with a low bank on the upper slope side. Possible spring of 5m to Northwest of the platform. The platform is 6m long, 5.8wide and 0.5 high. The bank is 1.3m wide and 0.2m high. The ID 50 (NPRN 407753) is located at SH6470706587 and is a cairn. The cairn is on top of a Northwest facing hill. It is oval shaped with the inside empty. Its dimensions are: 10.2m long, 10.2m wide and 1.3m high. Inside width of 3.3x2.7m. This cairn was already identified by aerial photograph.

5.2.2. Iron Age

This period is represented by an enclosure (ID 49) at the location SH6461506689. This enclosure doesn't exist in any OS map as it has never been recorded or found.

It is a defence enclosure on the left of the Craig-yr-Aderyn hillfort (NPRN 302862). The enclosure could be contemporary of the hillfort as it is in a position to defend a blind area of the Hillfort.

The enclosure has a total of 17m width on the drystone wall with the entrance. The entrance has 1.5m width. The enclosure is surrounded by drystone walls of 7m length on the outwork and 2.5m width where there is one main wall, with a narrow entrance, and an outwork downslope. The stone walls on the South side of the enclosure are 16m length.

5.2.3. Medieval

There are three sites from this period. The first is a long hut (ID 24) located at SH6476106878 and North South orientated. It is cut into North facing slope. It is visible that some stones have been moved and that the drystone wall has been disturbed. It has evidences of having had a later sheepfold on the North end.

The other two features are platforms. The first (ID 25) is located at SH6476106863 and is cut into North facing slope. It is north south orientated. It used to have a timber hut. This platform is 4.5m length, 3m wide. The second platform (ID 26) is located at SH6474606869. It is East West orientated and its 6.5m wide and 3.7m length platform, cut into the North facing slope, where it used to have a long hut.

All three sites are in the same area and very close to each other. They were for domestic and agricultural and subsistence use.

5.2.4. Post-Medieval

This period has three sites and they were all for agricultural and subsistence use. The first is a farmstead (ID 23) located at SH6484206922. This farmstead could be a long hut is built-in a North facing slope. There is a pile of stones that could possible indicate agriculture use: potato clamp. It seems to have a sheepfold. The main chamber is 5.2m length.

5.2.5. Post-Medieval/Modern

There are three sites that might be either post-medieval or modern. These consist of two sheepfolds (ID 14, located at SH643940669738 and ID 38, located at SH6474006180). They were all for agriculture and subsistence use. The last feature is a wall (ID 51) which is located at SH6460206505 and its period is not clear.

5.2.6. Modern

The modern period is characterized by different types of features: industrial, agriculture and subsistence, domestic and monument.

The industrial features are characterized by quarries and a stone pile. The first quarry (ID 18) is located at SH6500707372. The quarry is 4.70m wide and 2.50m length. It has a spoil with 3.50m length, 5.30m wide and 0.7cm high. This is a small quarry close to a nearby field wall.

The second feature is a quarry complex, meaning several quarries (ID 21) at the location SH6500807124. The quarry to the right is 7.60m long, 3.20m wide and has a height of 0.4m. On the left there is another quarry 7m long, 7.3m wide with a height of 0.4m. Next to the quarries there's a stone pile 5.7m long, 3.8m wide and 0.6m high.

Another quarry (ID 47) was located at SH6493306712. It is a few shallow scopes, covered, with piles of stones down on the South side. This quarry is 18m wide, 12m long and 0.3m high. Its spoil is 6.6m long, 3m wide and has a height of 0.5m.

At the location of SH6504107279, we have found a stone pile (ID 20) that looks loose and created for walling, however it doesn't seem to

have been all used for walls. This stone pile is 5.6m long, 2m wide and has a height of 0.7m.

There is a stone bank (earthwork), (ID 5) at the location SH6537606953. This stone bank is of agriculture and subsistence use and is 8m long, 0.6m wide and 0.2m high.

We identified one terrace (ID 6) at the location SH6537806756. This terrace could be of domestic use and is 6m wide and 2m high.

There are five sheepfold features for this period (ID 41, 28, 27 and 16). They are all of agriculture and subsistence use.

The ID 41 is located at SH6462806133. It is a square sheepfold with a drafting wall that continues against the slope. It's 3.1m wide, 3.6m long and 1.3m high. The wall is 0.6m wide and the drafting wall is 5.5m long.

The ID 28 is located at SH6492006517. It's a rectangular drystone wall sheepfold. It's 4.6m long, 2.1m wide and 1m high. The wall has a width of 4.6m.

The ID 27 is located at SH6477706842. It's a multi-cell drystone structure. The bigger cell is 3.5m (inside length), 2m wide and 0.8m high. The smaller cell is 2x2m and 1m high. The drafting wall is 5.5m long, 0.6m wide and 0.7m high.

The ID 16 is located at SH6471406692. It is a rectangular sheepfold with two cells and rough walling. Its West-east orientated and sheltered by a rock. It is 5.40m wide, 9.60m long and 1.30m high.

From this period there are also three clearance cairns (ID 44, 37 and 36).

The ID 44 is located at SH6502706696. This clearance cairn it's on the edge of a mire. It shows recent field clearance. The feature is 4m wide and 15m long.

The ID 37 is located at SH6488306301. This clearance cairn is 1.9m wide, 2.1m long and 1.2m high. It's located on the edge of a south facing top of hill.

The ID 36 is located at SH6485506348. This clearance cairn is 2m wide, 1.9m long and 0.8m high.

The survey has also identified a monument (ID 8) which is a building at the location SH6499506631. It is a feature made of drystone, 0.6m wide, 5x7m internal and < 2.3m high.

The survey identified two shelters. The first, ID 35, is located at SH6486606356. There's a 5m fragment of drystone wall west to the shelter. The shelter is 1.6m wide, 1.3m long and 1.2m high. The second feature is a shelter/sheepfold (ID 53) of domestic and agriculture and subsistence use as it seems to have been adapted later on. It's a small oval drystone enclosure of 2.1x1.8m, 0.7m high.

A wall (ID 52) has been found at SH6483006229. There are four walls across 50m on a hillside. On the East side it's faced with a shelter area. We believe this wall was meant for the sheep to shelter behind. Its dimensions are 2x1m.

5.2.7. Unknown

There is a total of 21 sites unknown from which: 12 unknown, 6 possible prehistoric, 1 medieval, 1 modern and 1 post-medieval/modern.

The 13 sites unknown (ID 1, 2, 4, 4b, 7, 9, 10, 11, 12, 13, 17, 19 and 42) include domestic and agriculture and subsistence use.

The ID 1 is located at SH6511407411. It is a terrace with maximum width of 6.2m and minimum width of 3.5m. Its 0.5-1m high and 14m East-west, 51m North.

The ID 2 is located at SH6508107331. It is a sub circular platform built into an East facing slope. The platform is 6x6m and 0.7m high.

The ID 4 is located at SH6524707196. It is a terrace 5m wide, 0.8m high and 14m East-west.

The ID 4b is located at SH6528407123. It is an "L" shaped terrace, 15m north-south, 15m east-west; 2.5m wide, 0.6m high, stone faced.

The ID 7 is located at SH6505606696. It is a terrace near a stone wall that has its entrance blocked by stones. The terrace is 4.8m wide, 1m high, and 2m West-east. It is in a downslope track.

The ID 9 is located at SH6499306581. It is a terrace on the track way 4.5m wide; 6.5m long and 1.5m high.

The ID 10 is located at SH6517506987. It is a clearance cairn 6x6m and 0.3m high. The feature seems to be disturbed.

The ID 11 is located at SH6502707084. It is a building of drystone on East facing slope. A large pile of rumbled stones at the west of the building next to the track. Possible entrance near track. It's cut into the hillside. It is 5m wide, 60cm high, and 7.90m long. Bank wall: 1.5m wide, 0.2/0.6m high. The stones are missing as they seem to have been used for the wall of the track.

ID 12 is located at SH6485807169. It is an ovoid enclosure on a North-west facing slope and some parts have collapse. Some walls are standing and one continues west. Dimensions: 6m long, 4m wide, 80cm high. The wall that continues west is 4.70m long.

ID 13 is located at SH6475307140. It is an enclosure on a North facing slope. Dimensions: 18.10m long, 24.10m wide and 14cm high.

ID 17 is located at SH6502707348. It is a quarry of industrial use, with the dimensions of: 27.10m wide, 9.80m long and 85cm high approx.

ID 19 is located at SH6502907274. It is a curving stone bank near the quarry. Its dimensions are: 1.45m wide, 0.5m high and 40m long.

ID 42 is located at SH6498806635. It is a sub rectangular platform of poor condition in East facing slope. Fragment of stone bank on east side. Dimensions: 8.4m long, 5.5wide, 0.7m high.

The 7 possible prehistoric unknown sites are all cairns from a cairn field:

ID 29 is located at SH6480806455. It is a cairn mostly covered by grass in a saddle. The cairn is 4m wide, 4.30m long and 50cm high.

ID 30 is located at SH6480406448. It is a cairn covered by grass. Its 4m long and 3.8m wide.

ID 31 is located at SH6478106444. It is a cairn covered by grass. Its 3.2m wide, 3.2 long and 30cm high.

ID 32 is located at SH6477406443. It is a cairn covered by grass. Its 3m wide, 3.6m long and 0.3m high.

ID 33 is located at SH6476806435. It is a cairn with the dimensions of 4.30m wide, 3.90m long and 0.2m high.

ID 34 is located at SH6476006427. It is a cairn with the dimensions of 2.2m long, 2.2m wide and 0.3m high.

ID 45 is located at SH6498606747. It is a hut circle, possibly reused, round oval to sub rectangular shaped. There's a stone and earth bank (2.4m wide, 0.5m high) on a platform in East facing slope. The stone used to build the hut was used earlier on this platform. There is a small section of walling (0.6m high) visible on the West side. The entrance is to southeast. The hut is 6.6m wide, 7.8m long and it has an earth lump of 5m wide.

From the unknown period there is also the ID 3 located at SH6518007241 which could be modern as it is an East facing "L" shaped bank: 23m long, 1m wide and 0.3m high with recent disturbances.

The ID 22 is located at SH6487406928, is a sheepfold from possible post-medieval or modern period. Its intern width is 3.7m, 3.7m long and 0.7m high. The wall is 1m wide and the entrance is 4.4m long.

The ID 48 is located at SH6480206715, is a sheepfold from possible medieval period. Possibly a two cell sub rectangular structure on North facing slope. Its 1.9m wide and 4.20m long. The wall is 0.5m wide and 0.4m high.

5.3. Limitations of survey

Some of the limitations of the survey were related to weather conditions, topography and vegetation. In general, we had nice days where the visibility was good and there was no rain.

However on the 13th April the weather conditions were harsher which slowed the survey.

The topography of the area created some limitations regarding the access to all the area of Craig-yr-Aderyn, however we have covered all the area that is humanly possible.

The area figure 1 as not surveyed, wasn't surveyed due to the overgrowth of vegetation that wouldn't allow access and visibility of the ground.

During writing the report I have encounter some problems when using ArcGis 10.1 when doing the mapping, to support the information on this report, about the surveyed sites. Since I wasn't able to resolve the program problem, this report is lacking maps that will be added in the additional data to this report alongside with the photographs of all the sites and an ArcGis 10.1 project.

6. Discussion

The survey results shown mainly agriculture and subsistence sites. The area of the Dysynni Valley has been mainly used for livestock. The sites of sheepfolds, shelters, long huts and farmsteads found, show that this has been a practice since the medieval times.

There is need for more survey studies around the area to relate all the data and be able to understand the development and history of upland Wales.

7. Bibliography

http://www.visitsnowdonia.info/craig_yr_aderyn-251.aspx

http://map.coflein.gov.uk/index.php?action=do_details&cache_name=ZXh0ZW50dHlwZSxCT1hfbWlueCwyNjQzNDRfbWlueSwzMDY3NDNfbWF4eSwzMDcwMjBfbWF4eCwyNjQ2MjBfc2VhcmNodHlwZSxhZHZhbmNlZF9vcmlkeS=&numlink=302862#tabs-4

Digimap.edina.ac.uk

Magic.gov.uk

8. Survey data

Table 5 - Survey results

Survey ID	NGR	Easting	Northing	Type	Broadclass	Period	Form	Condition	Land-use	Date	Photo ID	NPRN
1	SH6511407411	52.647613	-3.9952008	Terrace	Domestic	Unknown	Earthwork	Good	Grazed pasture	12/04/2015	1	
2	SH6508107331	52.646886	-3.9956556	Platform	unassigned	Unknown	Earthwork	Good	Grazed pasture	12/04/2015	2	
3	SH6518007241	52.646102	-3.9941564	Bank (Eathwork)	Agriculture and Subsistence	Unknown/Modern?	Earthwork	Recent disturbed	Grazed pasture	12/04/2015	4	
4	SH6524707196	52.645714	-3.9931484	Terrace	Domestic	Unknown	Earthwork	Good	Grazed pasture	12/04/2015	5; 6	
4b	SH6537606953	52.643563	-3.9911437	Bank (Eathwork)	Agriculture and Subsistence	Modern	Earthwork	Good	Grazed pasture	12/04/2015	8	
6	SH6537806756	52.641794	-3.9910338	Terrace	Domestic	Modern	Earthwork	Good	Grazed pasture	12/04/2015	9	
7	SH6505606696	52.641175	-3.995765	Terrace	Domestic	Unknown	Earthwork	Good	Grazed pasture	12/04/2015	10	
8	SH6499506631	52.640576	-3.9966393	Building	Monument	Modern	Building	Good	Grazed pasture	12/04/2015	11; 12; 13	
9	SH6499306581	52.640126	-3.9966484	Terrace	Domestic	Unknown	Earthwork	Good	Grazed pasture	12/04/2015	14	
10	SH6517506987	52.643819	-3.9941264	Clearance Cairn	Agriculture and Subsistence	Unknown	Earthwork	Disturbed	Grazed pasture	12/04/2015	15	
11	SH6502707084	52.644653	-3.9963521	Building	Monument	Unknown	Building	Good	Grazed pasture	12/04/2015	16; 17	
12	SH6485807169	52.645375	-3.9988831	Structure	Domestic	Unknown	Other structure	Moderate	Grazed pasture	13/04/2015	20; 21	

13	SH6475307140	52.645088	-4.0004221	Enclosure	Agriculture and Subsistence	Unknown	Complex	Good	Grazed pasture	13/04/2015	22; 23	
14	SH6439406697	52.641019	-4.0055426	Sheepfold	Agriculture and Subsistence	Post-Medieval/Modern?	Other structure	Good	Rough pasture	13/04/2015	25; 26; 27	
15	SH6443606587	52.640041	-4.004877	Sheepfold	Agriculture and Subsistence	Modern	Other structure	Good	Rough pasture	13/04/2015	28; 29	
16	SH6471406692	52.641054	-4.0008144	Sheepfold	Agriculture and Subsistence	Modern	Other structure	Good	Grazed pasture	13/04/2015	30; 31	
17	SH6502707348	52.647025	-3.9964602	Quarry	Industrial	Unknown	Earthwork	Good	Grazed pasture	14/04/2015	32; 33	
18	SH6500707372	52.647236	-3.9967654	Quarry	Industrial	Modern	Earthwork	Good	Grazed pasture	14/04/2015	34	
19	SH6502907274	52.646361	-3.9964003	Stone bank	Industrial	Unknown	Earthwork	Good	Grazed pasture	14/04/2015	35	
20	SH6504107279	52.646409	-3.9962251	Stone pile	Industrial	Modern	Earthwork	Good	Grazed pasture	14/04/2015	36	
21	SH6500807124	52.645008	-3.9966491	Quarries	Industrial	Modern	Earthwork	Good	Grazed pasture	14/04/2015	37	
22	SH6487406928	52.643214	-3.998548	Sheepfold	Agriculture and Subsistence	Unknown/Post-Medieval/Modern?	Other structure	Good	Grazed pasture	14/04/2015	38	
23	SH6484206922	52.643152	-3.9990182	Farmstead	Agriculture and Subsistence	Post-Medieval	Other structure	Moderate	Grazed pasture	14/04/2015	39a-d	
24	SH6476106878	52.642736	-4.0001965	Longhut	Domestic	Medieval	Other structure	Good	Grazed pasture	14/04/2015	41	
25	SH6476106863	52.642602	-4.0001904	Platform	Agriculture and Subsistence	Medieval	Earthwork	Moderate	Grazed pasture	14/04/2015	41	
26	SH6474606869	52.642652	-4.0004144	Platform	Agriculture and Subsistence	Medieval	Earthwork	Moderate	Grazed pasture	14/04/2015	42	
27	SH6477706842	52.642417	-3.9999454	Sheepfold	Agriculture and Subsistence	Modern	Other structure	Good	Grazed pasture	14/04/2015	43/43b	
28	SH6492006517	52.639533	-3.9977003	Sheepfold	Agriculture and Subsistence	Modern	Other structure	Good	Grazed pasture	14/04/2015	44	

29	SH6480806455	52.638948	-3.999329	Cairnfield	Agriculture and Subsistence	Unknown/Prehistoric?	Earthwork	Good	Grazed pasture	14/04/2015	45	
30	SH6480406448	52.638884	-3.9993852	Cairnfield	Agriculture and Subsistence	Unknown/Prehistoric?	Earthwork	Good	Grazed pasture	14/04/2015	46	
31	SH6478106444	52.638842	-3.9997232	Cairnfield	Agriculture and Subsistence	Unknown/Prehistoric?	Earthwork	Good	Grazed pasture	14/04/2015	47	
32	SH6477406443	52.638832	-3.9998262	Cairnfield	Agriculture and Subsistence	Unknown/Prehistoric?	Earthwork	Good	Grazed pasture	14/04/2015	48	
33	SH6476806435	52.638758	-3.9999115	Cairnfield	Agriculture and Subsistence	Unknown/Prehistoric?	Earthwork	Good	Grazed pasture	14/04/2015	49	
34	SH6476006427	52.638684	-4.0000264	Cairnfield	Agriculture and Subsistence	Unknown/Prehistoric?	Earthwork	Good	Grazed pasture	14/04/2015	50	
35	SH6486606356	52.638073	-3.9984318	Shelter	Domestic	Modern	Other structure	Good	Grazed pasture	14/04/2015	51	
36	SH6485506348	52.637998	-3.998591	Clearance Cairn	Agriculture and Subsistence	Modern	Earthwork	Good	Grazed pasture	14/04/2015	52	
37	SH6488306301	52.637583	-3.9981583	Clearance Cairn	Agriculture and Subsistence	Modern	Earthwork	Good	Grazed pasture	14/04/2015	53	
38	SH6474006180	52.63646	-4.0002205	Sheepfold	Agriculture and Subsistence	Post-Medieval/Modern?	Other structure	Moderate	Grazed pasture	14/04/2015	54a-b	
39	SH6470806160	52.636273	-4.0006848	Sheepfold	Agriculture and Subsistence	Post-Medieval	Other structure	Fair	Grazed pasture	14/04/2015	55	
40	SH6469906162	52.636288	-4.0008186	Sheepfold	Agriculture and Subsistence	Post-Medieval	Other structure	Moderate	Grazed pasture	14/04/2015	56	
41	SH6462806133	52.63601	-4.0018551	Sheepfold	Agriculture and Subsistence	Modern	Other structure	Good	Grazed pasture	14/04/2015	57	
42	SH6498806635	52.64061	-3.9967443	Platform	Domestic	Unknown	Earthwork	Poor	Grazed pasture	15/04/2015	58	
43	SH6499106676	52.640979	-3.9967168	Platform	Domestic	Prehistoric	Earthwork	Moderate	Grazed pasture	15/04/2015	59a-b	
44	SH6502706696	52.641168	-3.9961933	Clearance Cairn	Agriculture and Subsistence	Modern	Earthwork	Good	Grazed pasture	15/04/2015	60	

45	SH6498606747	52.641616	-3.9968197	Hut circle	Domestic	Prehistoric/Medieval?	Other structure	Good	Grazed pasture	15/04/2015	61a-c	
46	SH6494606703	52.64121	-3.9973925	Clearance	Agriculture and Subsistence	Modern	Earthwork	Good	Grazed pasture	15/04/2015	62	
47	SH6493306712	52.641288	-3.9975882	Quarry	Industrial	Modern	Earthwork	Good	Grazed pasture	15/04/2015	63	
48	SH6480206715	52.641282	-3.9995241	Sheepfold	Agriculture and Subsistence	Unknown/Medieval?	Other structure	Good	Grazed pasture	15/04/2015	64a-b	
49	SH6461506689	52.641002	-4.0022753	Enclosure	Defence	Iron Age	Complex	Good	Rough pasture	15/04/2015	65a-e	
50	SH6470706587	52.640109	-4.0008747	Cairn	Religious, Ritual and Funerary	Prehistoric	Earthwork	Good	Grazed pasture	15/04/2015	66a-b	407753
51	SH6460206505	52.639346	-4.0023918	Wall	Domestic	Post-Medieval/Modern?	Other structure	Good	Grazed pasture	15/04/2015	67	
52	SH6475406338	52.637883	-4.0000785	Wall	Domestic	Modern	Other structure	Good	Grazed pasture	15/04/2015	68a-d	
53	SH6483006229	52.636923	-3.9989115	Shelter/Sheepfold	Domestic/Agriculture and Subsistence	Modern	Other structure	Good	Grazed pasture	15/04/2015	69	

9. Acknowledgments

This survey wouldn't be possible without the support and teaching of Dr. Robert Johnston and the help of Thomas Parker on day 13th to 14th of April 2015.

I would also like to thank the owner of the land and the National Park Authority for giving us permission to survey the land.