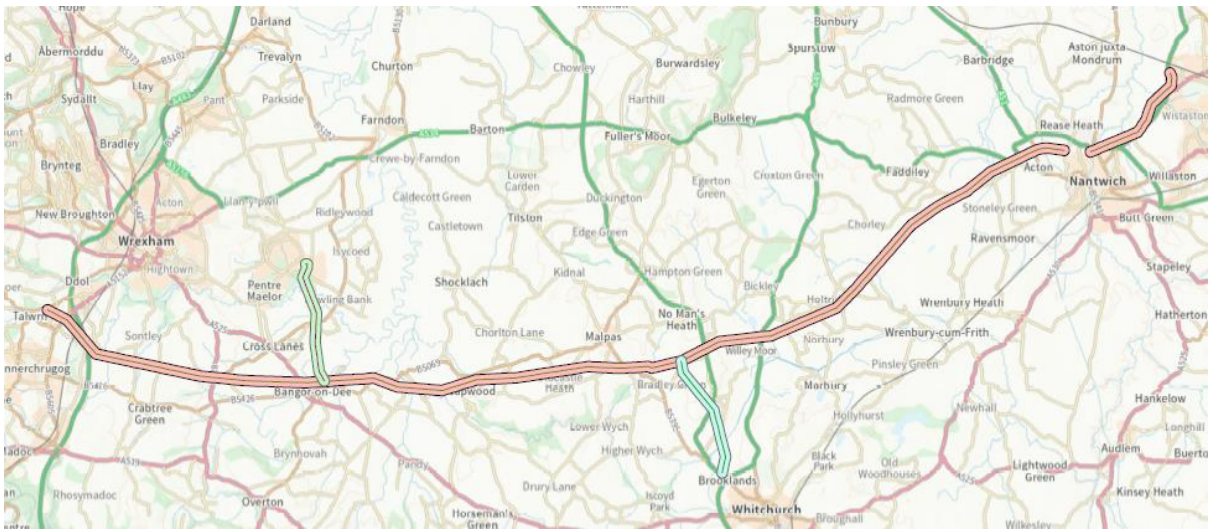


CPAT Report No. 1916

Cable Route BH:




Rhostyllen, Wrexham, to Crewe, Cheshire

Desk-based Heritage Constraint Assessment



YMDDIRIEDOLAETH ARCHAEOLEGOL CLWYD-POWYS
CLWYD-POWYS ARCHAEOLOGICAL TRUST

Organisation	Clwyd-Powys Archaeological Trust
Client Name	SP Manweb PLC / SP Energy Networks
CPAT Project No	2664
Project Name	Cable Route BH
Project Type	Desk based assessment
Project Manager	Tim Malim
Project Supervisor	Evon Kirby
Grid Reference	SJ 67623 56157 to SJ 30089 48261
County/LPA	Wrexham/Cheshire
CPAT Report No	1916

Report prepared by:	Report checked by:	Report approved by:
		
Evon Kirby Project Archaeologist	Tim Malim Principal Archaeologist	Tim Malim Principal Archaeologist
03/11/2022	29/11/2022	01/12/2022
Report Status	Final	
Confidential until	N/A	

Bibliographic reference: Kirby, E., 2022. *Cable Route BH: Rhostyllen, Wrexham, to Crewe, Cheshire: Desk-based Heritage Constraint Assessment*. Unpublished report. CPAT Report No. 1916.



YMDDIRIEDOLAETH ARCHAEOLEGOL CLWYD-POWYS
CLWYD-POWYS ARCHAEOLOGICAL TRUST

The Offices, Coed y Dinas, Welshpool, Powys, SY21 8RP, United Kingdom

+44 (0) 1938 552 002

trust@cpat.org.uk

www.cpat.org.uk

©CPAT 2022



The Clwyd-Powys Archaeological Trust is a Registered Organisation
with the Chartered Institute for Archaeologists

CONTENTS

SUMMARY	ii
CRYNODEB.....	ii
1 INTRODUCTION.....	1
2 NATURE OF THE SCHEME	1
3 METHODOLOGY	1
4 SCOPE AND GUIDANCE	2
5 HISTORICAL BACKGROUND	2
<i>PREHISTORIC ERA (10,000BC – AD 43)</i>	3
<i>ROMAN PERIOD (AD 43 – 410)</i>	3
<i>MEDIEVAL PERIOD (410 - 1500)</i>	3
<i>FIGURE 3 EXTRACT FROM 1888 OS MAP SHOWING SWANLEY HALL AND ASSOCIATED MOAT</i>	5
<i>POST-MEDIEVAL AND MODERN PERIODS</i>	6
6 BASELINE ASSESSMENT	8
<i>REGISTERED HISTORIC BATTLEFIELDS</i>	12
<i>NON-DESIGNATED ASSETS</i>	13
7 ASSESSMENT OF IMPACTS	13
8 MITIGATION.....	17
MITIGATION STRATEGY.....	17
<i>MITIGATION MEASURES</i>	18
TYPES OF IDENTIFIED IMPACT	18
<i>ACCESS</i>	18
<i>MINOR EXCAVATION WORKS</i>	18
<i>RESTRINGING OF STAY WIRES</i>	18
<i>SITE COMPOUNDS AND STORAGE OF MATERIALS</i>	19
<i>HEDGEROW REMOVALS</i>	19
9 SOURCES.....	24
APPENDIX 1: METHODOLOGY FOR ASSESSING THE POTENTIAL IMPACTS OF DEVELOPMENT ON HERITAGE ASSETS.....	25

Summary

A desk-based assessment has been conducted by the Clwyd-Powys Archaeological Trust in connection with proposals to modernise an existing overhead powerline, known as the BH Line, which runs between Rhostyllen, in Wrexham, and Crewe, in Cheshire. The assessment identified a small number of assets where there is the potential for direct impacts as a result of the various elements of the scheme and appropriate mitigation has been recommended. The results will inform the development of the work programme for the scheme and the assessment should be reviewed before the scheme is finalised.

Crynodeb

Cynhaliwyd asesiad desg gan Ymddiriedolaeth Archaeolegol Clwyd-Powys mewn cysylltiad â chynigion i foderneiddio llinell bŵer uwchben sy'n bodoli eisoes, a elwir yn BH Line, sy'n rhedeg rhwng Rhostyllen, yn Wrecsam, a Crewe, yn Sir Gaer. Nododd yr asesiad nifer fach o asedau lle mae potensial am effeithiau uniongyrchol o ganlyniad i wahanol elfennau'r cynllun ac mae lliniaru priodol wedi'i argymhell. Bydd y canlyniadau yn llywio datblygiad y rhaglen waith ar gyfer y cynllun ac y dylid adolygu'r asesiad cyn cwblhau'r cynllun.

1 Introduction

- 1.1. The Clwyd-Powys Archaeological Trust (CPAT) were invited to undertake an archaeological desk-based assessment for constraint mapping on behalf of SP Manweb PLC / SP Energy Networks in connection with the proposed modernisation of an existing 132kV overhead powerline known as the BH Line, which is a 42.15km route running between Wrexham and Crewe (SJ 67623 56157 to SJ 30089 48261). See Maps 1-11 at the rear of the report for location. This assessment is one of three undertaken by CPAT in relation to the modernisation of overhead powerlines. The additional routes are the CT Line and DF Line.
- 1.2. The BH route is a key network interconnector linking the Grid Supply Points (GSPs) at Legacy GSP and Crewe Grid. The route also provides to the Marchwiel areas of Wrexham and the Whitchurch area of Shropshire.
- 1.3. It is understood that there are no elements of the scheme which require planning permission, but the works are subject to the Electricity Act of 1989 which makes provision for the supply, generation and transmission of electricity. Schedule 9 of the Act details the preservation of amenity and fisheries, stating that:

'In formulating any relevant proposals, a licence holder or a person authorised by exemption to generate or supply electricity: (a) shall have regard to the desirability of ... protecting sites, buildings and objects of architectural, historical or archaeological interest; and (b) shall do what he reasonably can to mitigate any effects which the proposals would have on ... any such flora, fauna, features, sites, buildings or objects.'

2 Nature of the Scheme

- 2.1. The scheme involves a programme of refurbishment works including:
 - Replacement and upgrading of steelwork, tower furniture and fittings
 - Replacement of foundation muffs
 - Site compounds
 - Vehicular access to towers
 - Applying protective coating to towers and foundation muffs
 - Removing fibre wrap
- 2.2. The potential for any direct impact on heritage assets is considered to be relatively small, though any heritage assets requiring specific mitigation are detailed below.

3 Methodology

- 3.1. The assessment consisted of a desk-based study of readily available primary and secondary documentary, cartographic, and photographic sources in order to provide a historical framework for any surviving archaeological remains. This included relevant records held at the

regional Historic Environment Records (HER) maintained by CPAT and Cheshire Archaeology, the National Monument Record, the National Library of Wales and Historic England. The 2m-resolution LiDAR data was accessed for the whole area via the Welsh Government's Geo-Portal for Wales and the Environment Agency government data portal. Data for designated and registered assets was obtained from the CPAT and Cheshire Archaeology HER and checked for the route between BH146 and BH220 via Cof Cymru - National Historic Assets of Wales and between BH145 and BH1R via Historic England.

4 Scope and Guidance

- 4.1. The Historic Environment is a broad concept that embraces archaeological remains, the built heritage and historic landscapes. Cultural heritage is deemed to include intangible heritage as well as the full range of man-made features that have been imposed on the landscape from the Palaeolithic, more than two hundred and fifty thousand years ago, to the 20th century. Some of these features will be visible as upstanding remains on the ground; others will be buried and only become apparent during ground disturbance. Some will have an archaeological interest and importance; others will be more historical in their origin. Individually all these features are known as heritage assets – as defined for instance, in the Highways Agency's Design Manual for Roads and Bridges (DMRB).
- 4.2. Heritage assets include the following designated (statutorily protected) and registered (non-statutorily protected) sites: World Heritage Sites; Scheduled Monuments; Listed Buildings (LBs); Conservation Areas; and Registered Historic Parks and Gardens. They also include remains that do not have national protection, but have been included on a historic environment record or other local authority list and therefore are material considerations in the planning process called non-designated heritage assets.
- 4.3. In England the Ancient Monuments and Archaeological Areas Act 1979 provides the legislative framework for the historic environment, which was revised in Wales by The Historic Environment (Wales) Act 2016. The 2016 Act amended the Ancient Monuments and Archaeological Areas Act 1979 and the Planning (Listed Buildings and Conservation Areas) Act 1990. It extended the definition of scheduled monuments and enhanced their protection, as well as making changes to the process of scheduled monument consent. Changes were also made to the protection of listed buildings. The 2016 Act also provided for a statutory register of historic landscapes, a statutory list of place names, and imposed a statutory duty on Welsh Ministers to compile and maintain Historic Environment Records (HERs).
- 4.4. The revised Design Manual for Roads and Bridges (DMRB), LA106 (January 2020) provides a framework for assessments of the historic environment, whether these be for environmental statements or for smaller developments that do not require environmental impact assessments. The approach to the historic environment which it promotes, though designed primarily for road developments, is more generally relevant as a methodology for other types of development and has been adopted here (see Appendix 1).

5 Historical Background

- 5.1. This section provides a brief summary of the archaeology and history of the study area to enable the findings of the assessment to be placed in a wider context. The BH Line crosses 1 Registered Historic Landscape in Wales and passes close to a number of important heritage assets.

Prehistoric Era (10,000BC – AD 43)

- 5.2. Prehistoric representation across Wrexham and Cheshire is primarily dominated by The Iron Age, with archaeological remains most often found in the form of hillforts, with numerous examples along the Clwydian Range to the west and north-west of Wrexham and several along the mid-Cheshire ridge. These sites are placed in visible and strategic locations and often have evidence of earlier occupation but were abandoned by the late Iron Age. In some examples these sites were also used in earlier and later periods, such as at Beeston Castle which has evidence suggesting the area was utilised during the Neolithic, Bronze Age and Iron Age with the later construction of a castle during the medieval period.
- 5.3. Other sites of prehistoric archaeology exist across Wrexham and Cheshire and include the two round barrows located within the search area: Croes-Foel (DE048) and Hafod-y-Bwlch (DE047). Funerary monuments such as round barrows are characteristic of the Bronze Age and are found throughout Cheshire and Clwyd.
- 5.4. An additional seven non-designated heritage assets have been recorded across the route: two prehistoric wetlands that contain palaeo-environmental remains, a scattering of prehistoric worked flint and a series of separate Bronze Age chance finds.

Roman Period (AD 43 – 410)

- 5.5. Deva (Chester) was a vital Roman fortress and served North Wales and North-West England as an administrative centre and port. Recent archaeological surveys and excavations around Wrexham have uncovered a Roman Villa which would be typical of rural communities during this period. Another example was identified in 1998 at Eaton-by-Tarporley c. 21km to the east, but the cable route is more likely to cross rural settlement and field systems, or industrial sites, rather than estate centres such as villas.
- 5.6. Roads were an important part of Roman infrastructure with towns connecting to a main network. In 2002 a previously undiscovered Roman road was identified connecting Nantwich to the main road network. These excavations also identified Nantwich as a minor Romano-British settlement and salt workings and uncovered examples of timber-built brine tanks. Four sections of Roman roads and two non-designated sections of possible Roman Roads have been identified across the route.

Other non-designated heritage assets include a series of single finds such as coins, pottery and brooches, primarily found around the Cheshire towns and Villages of Nantwich, Malpas, Henhull and Baddiley. Linear features, possibly Roman field systems, have been identified near Sontley, Wrexham.

Medieval Period (410 - 1500)

- 5.7. Nantwich continued to be an area of salt production as a medieval town and thrived as a regional centre. The modern town of Wrexham was first mentioned in the 12th century and consisted of a small village. During the 13th century the Lord of the Manor granted land to an abbey splitting the area into Wrexham Abbot and Wrexham Regis.
- 5.8. The medieval rural landscape was primarily agricultural. Land was granted to a Lord of the Manor which was then farmed by tenants. Often the land was split into elongated strips for tenants to farm, creating distinctive field systems which can be identifiable through aerial photography (e.g. Fig 1 and 2). The route primarily passes through rural areas that would have had similar agricultural use surrounding small settlements. The search area includes the non-

designated deserted medieval villages of Henhull (MCH5467), Bickley (MCH1715), Alvaston (187), and Cuddington (2009/1).

- 5.9. Manor houses within settlements during this period were often enclosed by a moat as a sign of status. The search area includes three recorded moated sites: the scheduled monument of the Moated Site near Groesfoel Farm DE193, the moated site within the grounds of the listed building Swanley Hall (265) and the non-scheduled moat at Moat Farm, Swanwick Green (MCH2150). The moat at Swanley Hall is labelled on historic mapping dating to 1888 (Fig 3) and the earthworks of the moat are still visible on LiDAR imaging (Fig 4).

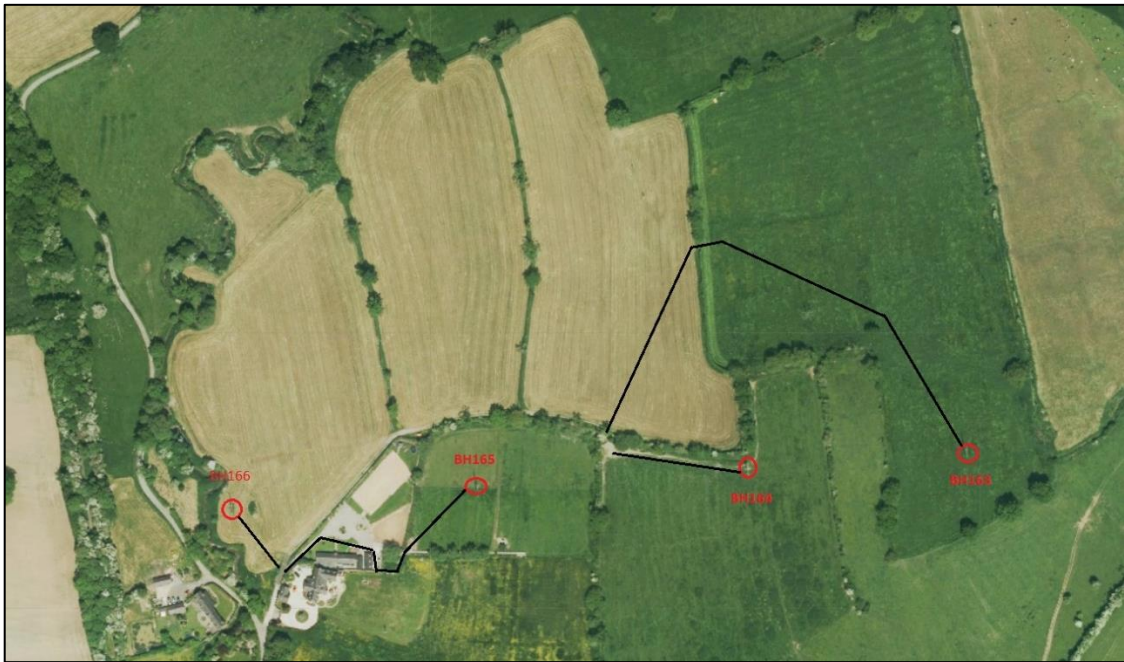


Figure 1 Aerial photograph demonstrating the location of BH Line towers BH166-BH163 and proposed access routes through a strip field system



Figure 2 LiDAR image of strip field system demonstrating the pre-existing line of the field boundaries.

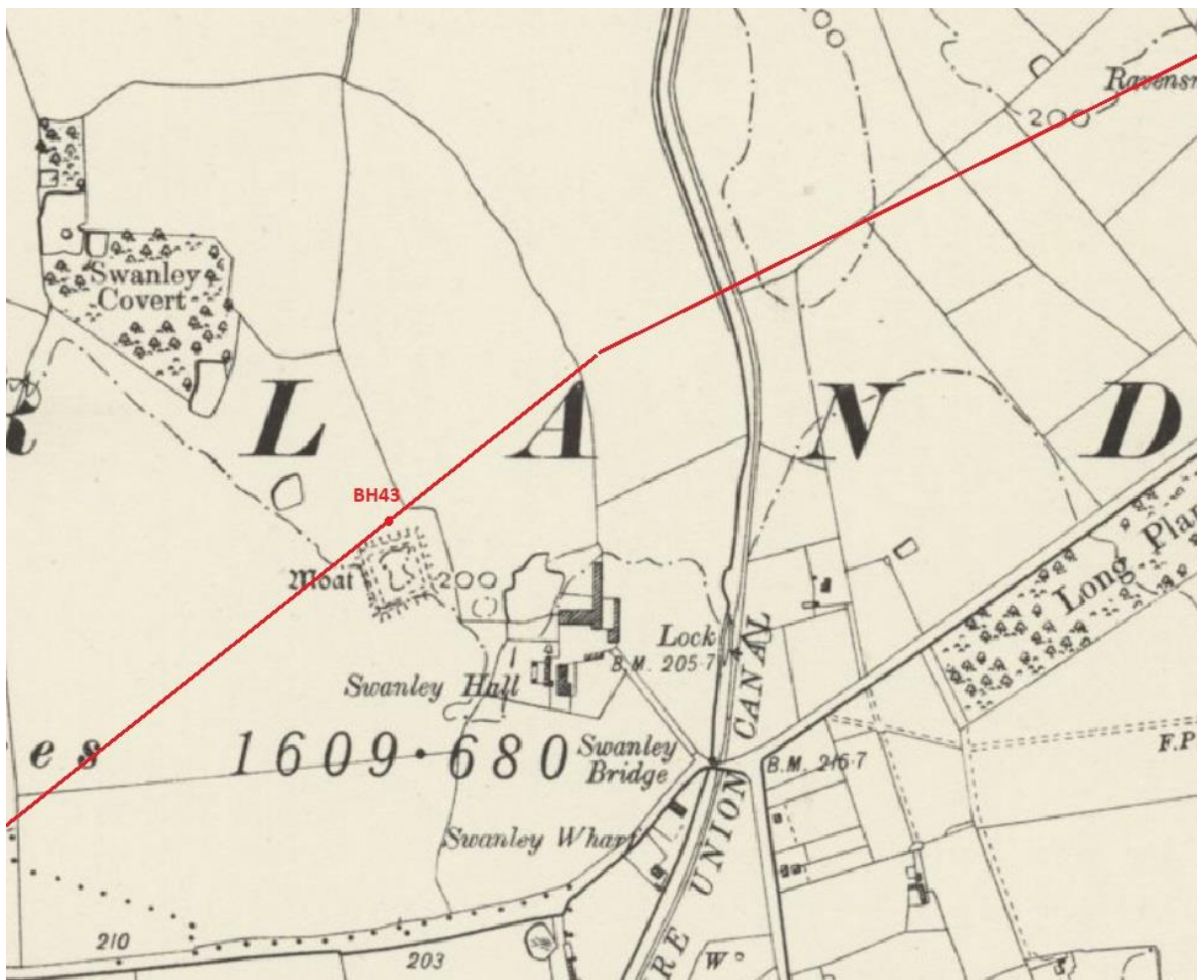


Figure 3 Extract from 1888 OS map showing Swanley Hall and associated moat

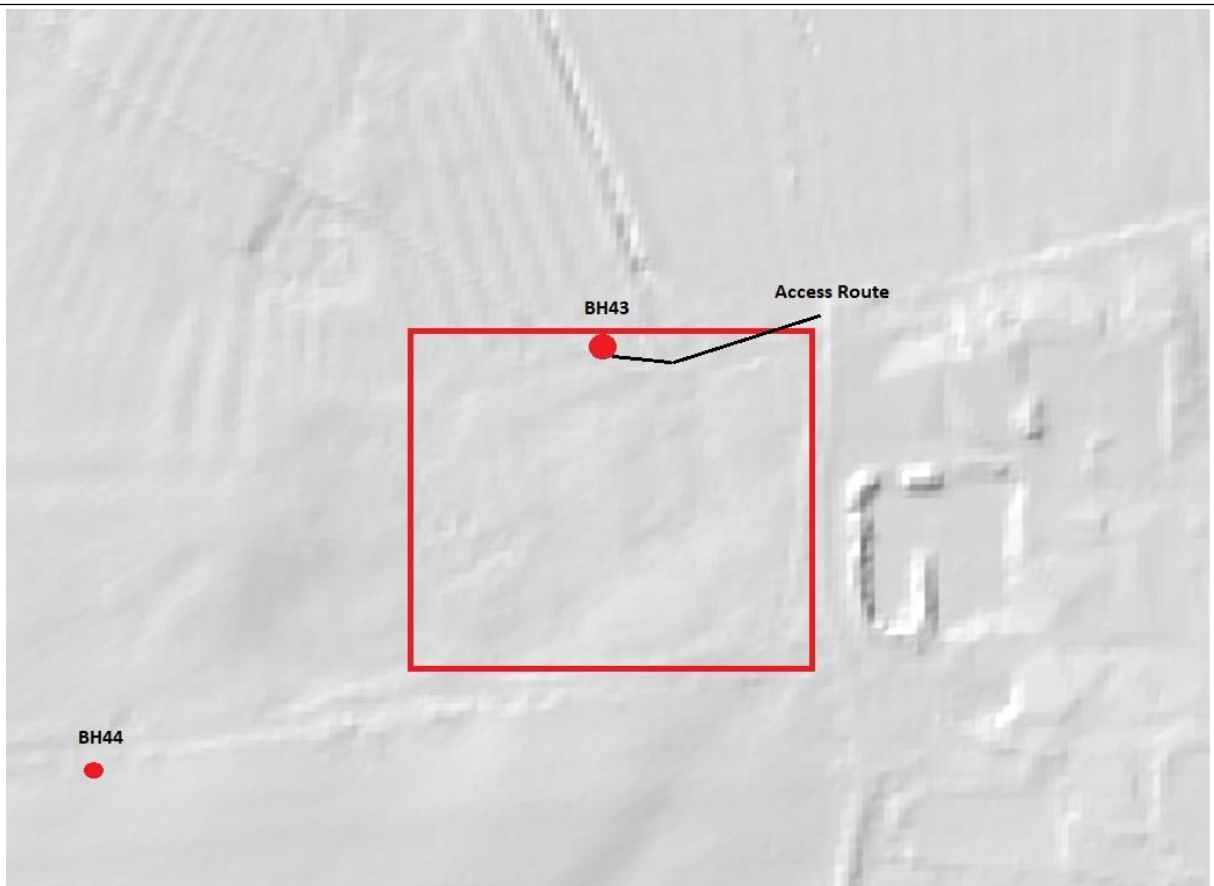


Figure 4 LiDAR imaging showing the moat earthworks at Swanelly Hall (red square)

Post-Medieval and Modern Periods

- 5.10. The BH route passes partially through the towns of Nantwich and Crewe and a small number of villages across Cheshire and Wrexham however, the line primarily crosses rural land. The landscape during the post-medieval period was similar, consisting of agricultural fields and a small number of villages (e.g. Fig 6 and 7), with development during the period largely limited to the outskirts of sizeable settlements and towns as populations grew. All listed buildings within the search area date to this period; six of the eleven buildings are farmhouses in addition to 3 other domestic buildings, a windmill, and a guidepost.
- 5.11. The primary town the route passes through is Nantwich, who's main industry was historically the manufacturing of salt, an industry starting during the Roman period and continuing into the post-medieval period. By the 19th century Nantwich was one of the nation's top producers of salt and additionally served as a crucial coaching route from London to Wales and Ireland. The production technique of extracting salt from natural brine springs eventually became unprofitable due to competition from mined rock salt and by the end of the 1950's the industry had collapsed.
- 5.12. The route passes through the Historic Battlefield of The Battle of Nantwich which was fought 25 January 1644 during the First English Civil War. The battle was a substantial victory for the Parliamentarians as the Royalists had successfully secured all of Cheshire with the exception of Nantwich, where the garrison held out under siege. The battlefield remains largely enclosed pasture, as it was in 1644.

- 5.13. A large portion of the non-designated records across the route dating to this period are farm buildings relating to the Glastir Traditional Farm Building project and ponds recorded during the Maelor Saesneg Historic Landscape project, making up 89 of the 125 recorded assets. Other records include findspots across the route, with a density around The Battle of Nantwich site, and a small number of uninvestigated sites noted from historic maps, documents, and aerial photography.

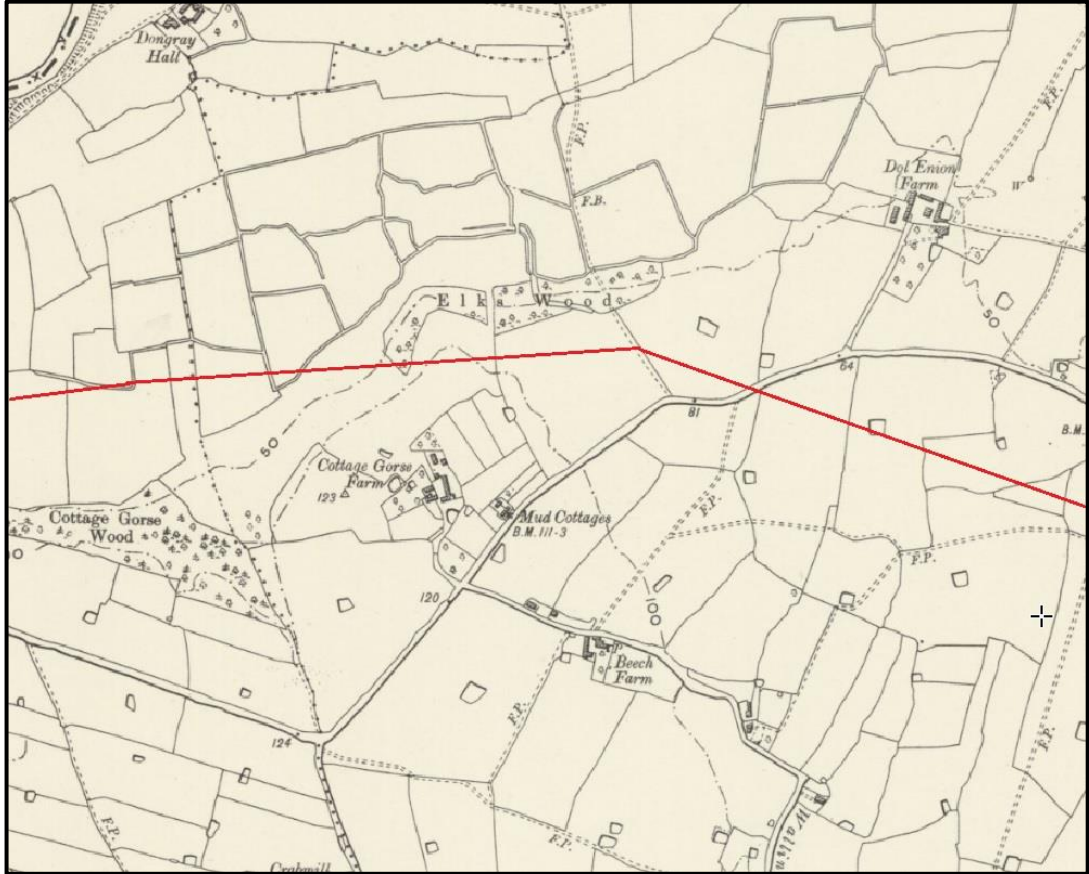


Figure 5 Extract of 1888 OS map showing BH Route between BH157-165

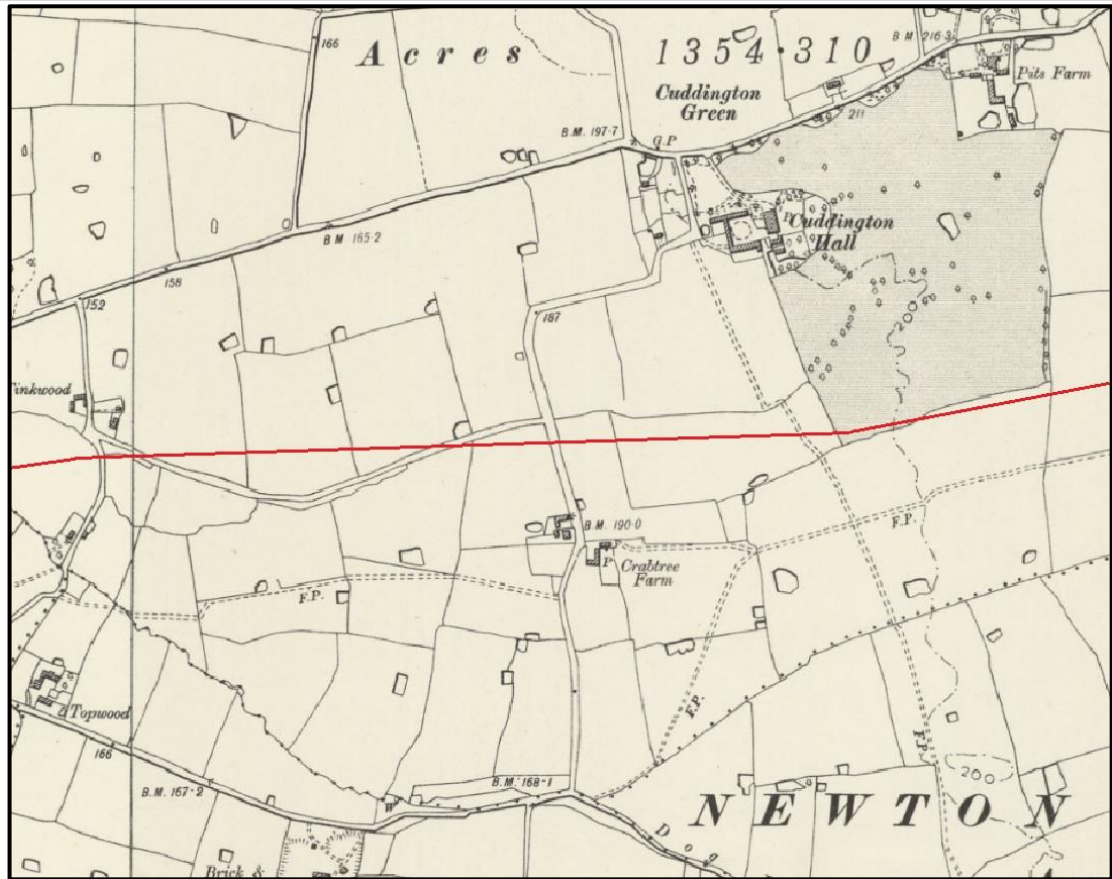


Figure 6 Extract of 1888 OS map showing BH Route between BH133-141

6 Baseline Assessment

- 6.1. The baseline assessment has considered all known heritage assets within a study area which extends for 175m to either side of the BH Line to take account of potential access routes and compounds. Maps 1 – 10 show the location of designated and non-designated heritage assets in relation to the cable alignment, towers and access routes. These data have been purchased from historic environment records administered by the Clwyd Powys Archaeological Trust (search request E6787) and Cheshire Shared Services (search request 12245). An additional search was made for those access routes that extended beyond the buffer zone, and if assets were found in close proximity to the access routes, they have been added to the maps (Drawings 1 – 10 at end of this report).

Designated and Registered Assets within 175m of the overhead line

- 6.2. There are 21 designated assets within 175m of the overhead line, in addition to numerous historic hedgerows. Additional assets in close proximity to access routes outside the buffer zone include on Map 6 two listed buildings which are identified as the Grade II Bickley Hall Farmhouse and attached farm building (1130619) and the Grade II Barhill Farmhouse (1330256).

Table 1: Designated heritage assets within 175m of the overhead line

Designation	Number within 175m
World Heritage Sites	0
Scheduled Monuments	5
Listed Buildings	11
Registered Historic Parks and Gardens	0
Registered Historic Landscapes	1
Registered Historic Battlefield	1
Conservation Areas	3
Historic Hedgerows	Numerous

Scheduled Monuments

- 6.3. Scheduled Monuments are designated features of national importance. They are protected under the Ancient Monuments and Areas of Archaeological Importance Act, 1979, and their settings are also protected.
- 6.4. The assessment has identified 5 scheduled monuments within the study area. Map 1 and Figure 7 shows the location of the western-most three, so that they can be clearly avoided during the proposed works. Wat's Dyke is a north-south aligned linear monument (Map 1 and Figure 8) through which the cable route passes at Middle Sontley Farm. In this zone two sections of the dyke are scheduled, DE152 to the north and DE 153 to the south, but the area in between is not scheduled due to previous disturbance. This is the zone through which the cable route passes, but evidence for this Mercian boundary feature will still survive below ground level.

Table 2 Scheduled Monuments within the study area

SM No.	Name
DE193	Moated Site near Groesfoel Farm, Rhostyllen
DE048	Croes-Foel Round Barrow
DE047	Hadfod-y-Bwlch Round Barrow
DE152	Wat's Dyke: Section extending from Erddig Park to Middle Sontley
DE153	Wat's Dyke: Section extending from Middle Sontley to Black Brook Bridge

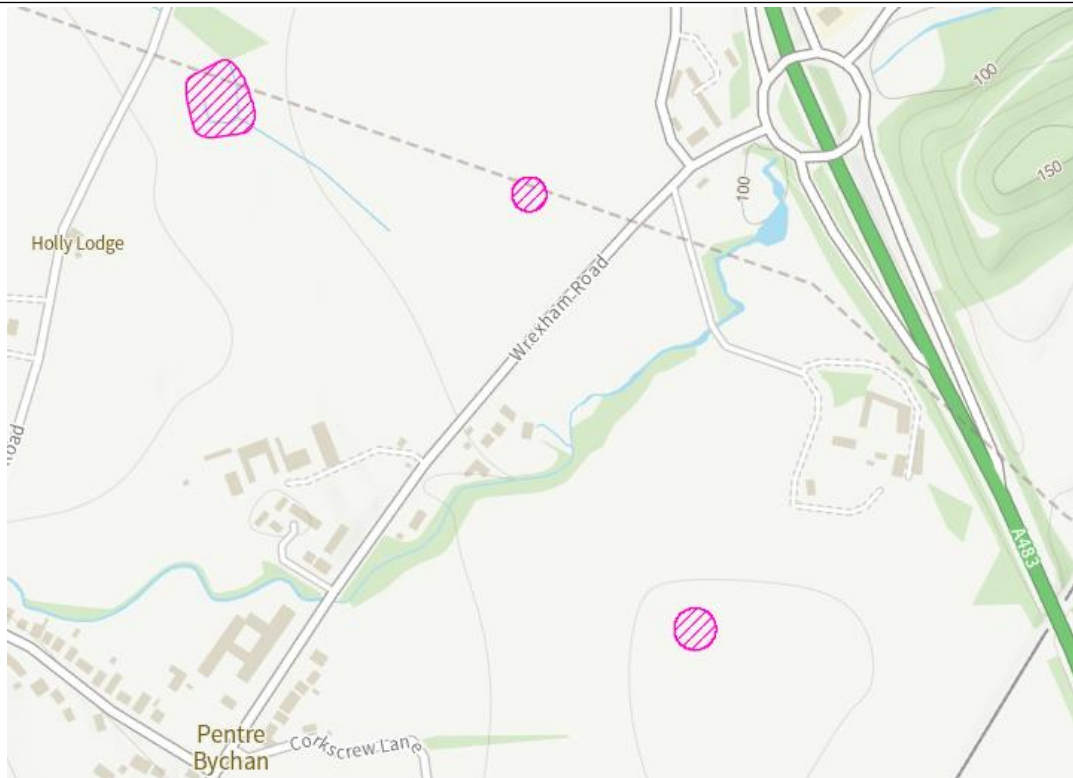


Figure 7 Scheduled monuments at the western end the cable route (detailed map)

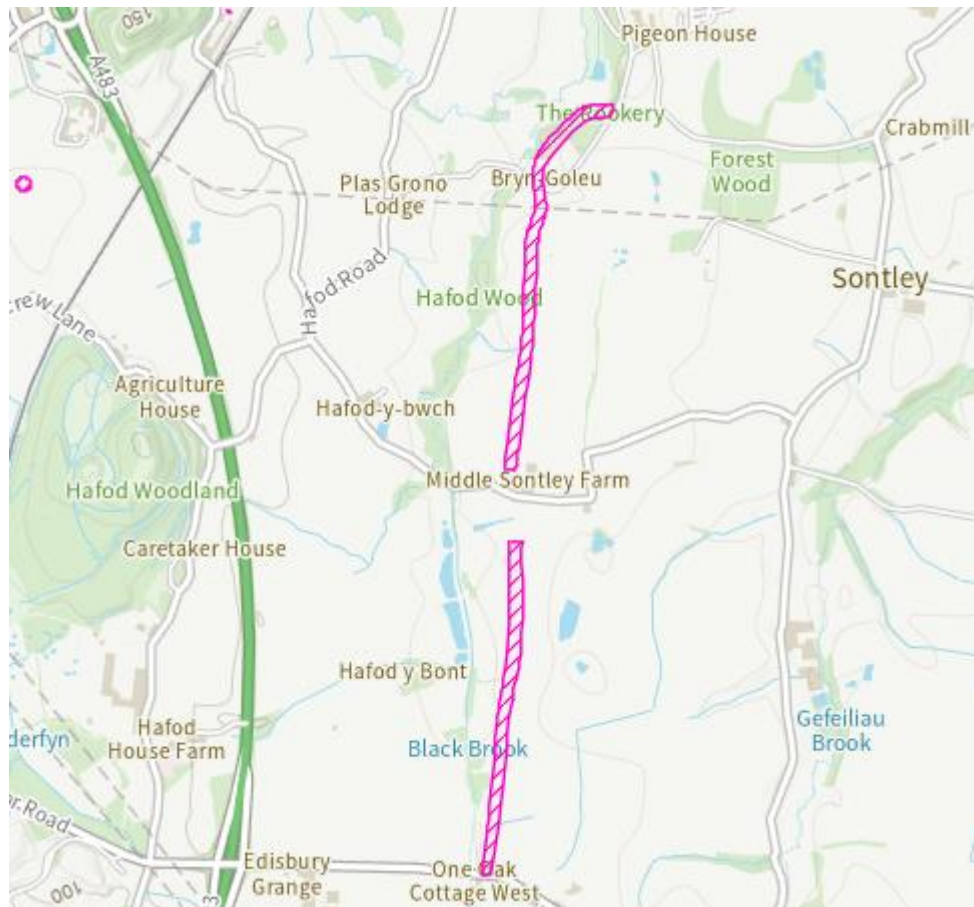


Figure 8 Scheduled sections of Wat's Dyke at Sontley (DE152 and DE153) (BH205 and 206)

Listed Buildings

- 6.5. These are protected under the Planning (Listed Buildings and Conservation Areas) Act 1990. All listed buildings are nationally important, but are graded in order of significance as Grade I, II* or II. Local planning authorities must have special regard to the desirability of preserving a listed building and its setting regardless of its grade, and it also requires planning proposals to meet the test of determining the extent to which a development affects views to and from a listed building.
- 6.6. The assessment has identified 11 listed buildings within the study area.

Table 3 Listed buildings within study area

List no	Name	Grade	NGR
1138578	RAVENSMOOR WINDMILL	II	SJ 6231 5308
1138699	MARSHFIELD BANK FARM HOUSE	II	SJ 6760 5546
1312802	HOLLY TREE HOUSE	II	SJ 6215 5320
1330123	SPRINGE LANE HALL	II	SJ 6116 5232
1129965	TINKWOOD	II	SJ 4473 4601
1130623	SHIPPON 30 METRES SOUTH WEST OF TOP FARM	II	SJ 5100 4652
1135855	TOP FARMHOUSE	II	SJ 5102 4656
1312878	GUIDEPOST	II	SJ 4948 4631
1330255	LOWER MOSS FARMHOUSE	II	SJ 4945 4613
301413	GRAIG COTTAGE	II	SJ 3952 4576
1138575	SWANLEY HALL, SPRINGE LANE	II	SJ 6161 5259

Registered Parks and Gardens

- 6.7. The Historic Environment (Wales) Act 2016 and the National Heritage (England) Act 1983 provides for the creation of a statutory Register of Parks and Gardens of Special Historic Interest in Wales and England respectively. Parks and gardens are graded using the same categories as listed buildings (i.e. I, II*, II).

There are 0 registered parks and gardens within the study area.

Registered Historic Landscapes

- 6.8. Some historic landscapes in Wales are considered to be particularly significant and/or well preserved. These have been recorded in a Register of Landscapes of Historic Interest in Wales. Classed as either outstanding or special interest, these have been published in two volumes

which form Part 2 of the Register of Landscapes, Parks and Gardens of Special Historic Interest in Wales published in 1998 and 2001. This part of the Register is advisory but non-statutory.

- 6.9. The BH Line crosses 1 registered historic landscape.

Table 4 Registered Historic Landscapes within the study area

Ref no	Name
HLW (C) 7	Maelor Saesneg

Registered Historic Battlefields

- 6.10. The Register of Historic Battlefields was established in 1995 and is administered by Historic England. The National Planning Policy Framework (2021) sets out that registered battlefields are designated heritage assets of the highest significance.

- 6.11. The assessment has identified 1 historic battlefield within the study area.

Ref no	Name
1000022	Battle of Nantwich

Conservation Areas

- 6.12. These are protected under the Planning (Listed Buildings and Conservation Areas) Act 1990. This Act requires local planning authorities to have special regard to the desirability of preserving the special character of a conservation area, and it also requires planning proposals to meet the test of determining the extent to which a development affects views to and from such an area.

- 6.13. There are 3 Conservation Areas within the study area:

- Bangor-is-y-Coed
- Chester Canal (East)
- Reaseheath Conservation Area

Historic Hedgerows

- 6.14. Historic hedgerows are protected under the Hedgerow Regulations (1997). A hedgerow is deemed important, i.e. historic, if it marks a parish or township boundary which pre-dates AD 1850, incorporates an archaeological feature, is part of or incorporates an archaeological site, marks the boundary of (or is associated with) an estate or manor which pre-dates AD 1600, or forms an integrated part of a parliamentary enclosure.

- 6.15. The BH Line crosses several areas which retain significant survival of post-medieval boundaries and associated hedgerows identifiable on Tithe maps in addition to small areas of surviving medieval strip field systems identifiable by aerial photography and LiDAR.

Non-designated Assets

- 6.16. A total of 215 non-designated assets have been identified within 175m of the overhead line, 47 of which are traditional farm buildings noted during the Glastir Traditional Farm Building project, while 42 assets are ponds that relate to the Maelor Saesneg Historic Landscape Characterisation Project. Other potentially significant assets include the site of a possible civil war burial site and the postulated sites of two Roman roads. In addition, several assets have been identified in close proximity to access routes which extend beyond the buffer zone. On Map 3 Plas Fron ridge and furrow, Sesswick (PRN128281), and Old Bridge House, Bangor (PRN41085). On Map 4 there are two assets relating to medieval or later settlement at Worthenbury (platform PRN105352 and settlement 15702).

7 Assessment of Impacts

- 7.1. Towers BH215, BH217 and BH218 lie respectively in the same fields as scheduled monuments DE047 Hafod-y-Bwlch Round Barrow, DE048 Croes-Foel Round Barrow and DE193 Moated Site near Groesfoel Farm (Table 3). In addition, BH tower 205 lies in the same field as Wat's Dyke DE153: section extending from Middle Sontley to Black Brook Bridge, 24m to the north-east.
- 7.2. Towers 144A - 171 come within the Historic Landscape of Wales Maelor Saesneg, but the proposed works would not affect this designation. Towers BH29-BH34 lie within the historic battlefield of the Battle of Nantwich and any programme of work has the potential to impact the area.
- 7.3. The access route for tower BH106 passes through the grounds of listed buildings 1130623 Shippon 30m southwest of Top Farm and 1135855 Top Farmhouse. In addition, listed building 1312878 Guidepost lies close to a road crossing which may require the erection of scaffolding as part of the work programme.
- 7.4. Eighteen of the BH Line towers line are in close proximity to non-designated assets, while access to Tower BH185 is through Ancient Woodland 37155 (Table 3). Two non-designated assets lie close to a road crossing which may require the erection of scaffolding.
- 7.5. Thirty-seven of the BH Line towers require access through historic hedgerows and twenty-two towers are placed along or close to historic hedgerows either identified through Tithe maps or aerial photography. Those historic hedgerows which may be impacted upon by the refurbishment of the line are summarised in Table 3.

Table 3: Summary of potential direct impacts to heritage assets

Tower	Asset designation	Ref	Description	Value	Type of impact
BH9	Historic Hedgerows	N/A	Hedgerow	Medium	Access, minor excavation works

BH12	Historic Hedgerows	N/A	Hedgerow	Medium	Access, minor excavation works
BH13	Historic Hedgerows	N/A	Hedgerow	Medium	Access, minor excavation works
BH24-BH29	Non-designated	MCH5467	Henhull Village	Medium	Minor excavation works.
BH29-BH34	Historic Battlefield	MCH5614	Battle of Nantwich	Medium	Access, minor excavation works,
BH31-BH32A	Non-designated	MCH23591	Farmstead Site	Medium	Access
BH32	Historic Hedgerows	N/A	Hedgerow	Medium	Access, minor excavation works
BH34	Historic Hedgerows	N/A	Hedgerow	Medium	Access
BH35	Non-designated	MCH23676	Possible Burial Site	Medium	Access, minor excavation works
BH38	Non-designated	MCH11052	Possible Roman Road	Medium	Access, minor excavation works,
BH39	Historic Hedgerows	N/A	Hedgerow	Medium	Access
BH39	Non-designated	MCH11052	Possible Roman Road	Medium	Access
BH40	Historic Hedgerows	N/A	Hedgerow	Medium	Access
BH41	Historic Hedgerows	N/A	Hedgerow	Medium	Access
BH47	Historic Hedgerows	N/A	Hedgerow	Medium	Access, minor excavation works
BH49	Historic Hedgerows	N/A	Hedgerow	Medium	Access, minor excavation works
BH51	Historic Hedgerows	N/A	Hedgerow	Medium	Access
BH52	Historic Hedgerow	N/A	Hedgerow	Medium	Access
BH53	Historic Hedgerow	N/A	Hedgerow	Medium	Access
BH55	Historic Hedgerow	N/A	Hedgerow	Medium	Access
BH58	Historic Hedgerow	N/A	Hedgerow	Medium	Access, minor excavation works
BH60	Non-designated	MCH23653	Site of Farmstead	Low	Access
BH61	Non-designated	MCH23653	Site of Farmstead	Low	Access

BH69	Historic Hedgerow	N/A	Hedgerow	Medium	Access, minor excavation works
BH71	Historic Hedgerow	N/A	Hedgerow	Medium	Access, minor excavation works
BH73	Historic Hedgerow	N/A	Hedgerow	Medium	Access
BH75	Historic Hedgerow	N/A	Hedgerow	Medium	Access
BH84-BH85	Non-designated	MCH24891	Site of Farm Building	Medium	Minor excavation works
BH90-BH91	Non-designated	MCH25281	Wetland	Medium	Access, minor excavation works
BH92	Non-designated	MCH25281	Wetland Willey Moor	Medium	Access
BH93-BH95	Non-designated	MCH25281	Wetland Willey Moor	Medium	Access, minor excavation works
BH103	Historic Hedgerow	N/A	Hedgerow	Medium	Access, minor excavation works
BH104	Historic Hedgerow	N/A	Hedgerow	Medium	Access, minor excavation works
BH106	Listed Building	1130623; 1135855	Shippon 30m southwest of Top Farm; Top Farmhouse	High	Access
BH108	Non-designated	MCH24334	Tattenhall to Whitchurch Railway Line	Medium	Access
BH109	Historic Hedgerow	N/A	Hedgerow	Medium	Access, minor excavation works
BH115-BH116	Listed Building	1312878	Grade II Guidepost	High	Minor excavation works
BH116	Non-designated	MCH989	Tilston to Malpas Roman Road	Medium	Access, ground investigation
BH122	Historic Hedgerows	N/A	Hedgerow	Medium	Access, minor excavation works
BH123	Historic Hedgerows	N/A	Hedgerow	Medium	Access, minor excavation works
BH127	Historic Hedgerows	N/A	Hedgerow	Medium	Access
BH128A	Historic Hedgerows	N/A	Hedgerow	Medium	Access

BH129	Historic Hedgerows	N/A	Hedgerow	Medium	Access, minor excavation works
BH130	Historic Hedgerows	N/A	Hedgerow	Medium	Access
BH131	Historic Hedgerows	N/A	Hedgerow	Medium	Access
BH133	Historic Hedgerows	N/A	Hedgerow	Medium	Access
BH134	Historic Hedgerows	N/A	Hedgerow	Medium	Access
BH135	Historic Hedgerows	N/A	Hedgerow	Medium	Access, minor excavation works
BH136	Historic Hedgerows	N/A	Hedgerow	Medium	Access
BH138	Historic Hedgerows	N/A	Hedgerow	Medium	Access
BH139	Historic Hedgerows	N/A	Hedgerow	Medium	Access
BH140	Historic Hedgerows	N/A	Hedgerow	Medium	Access, minor excavation works
BH143	Non-designated	265	Listed Building – Site of Moat	Medium	Access, minor excavation works
BH144	Non-designated	265	Listed Building – Site of Moat	Medium	Access
BH148	Historic Hedgerows	N/A	Hedgerow	Medium	Access
BH149	Historic Hedgerows	N/A	Hedgerow	Medium	Access
BH150	Historic Hedgerows	N/A	Hedgerow	Medium	Access
BH156	Historic Hedgerows	N/A	Hedgerow	Medium	Access, minor excavation works
BH159	Historic Hedgerows	N/A	Hedgerow	Medium	Access
BH160	Historic Hedgerows	N/A	Hedgerow	Medium	Access, minor excavation works
BH163	Historic Hedgerows	N/A	Hedgerow	Medium	Access
BH169	Historic Hedgerows	N/A	Hedgerow	Medium	Access
BH171A	Historic Hedgerows	N/A	Hedgerow	Medium	Access
BH172	Historic Hedgerows	N/A	Hedgerow	Medium	Access
BH172	Non-designated	PRN19364	Boatbuilding Site	Medium	Access, minor excavation works
BH173	Non-designated	PRN101840	Possible moated site	Medium	Access, minor excavation works
BH175	Historic Hedgerows	N/A	Hedgerow	Medium	Access
BH176	Historic Hedgerows	N/A	Hedgerow	Medium	Access
BH176A	Historic Hedgerows	N/A	Hedgerow	Medium	Access

BH184	Historic Hedgerows	N/A	Hedgerow	Medium	Access
BH185	Ancient Woodland	37155	Woodland	Medium	Access
BH191	Historic Hedgerows	N/A	Hedgerow	Medium	Access, minor excavation works
BH194/193	Historic Hedgerows	N/A	Hedgerow	Medium	Access
BH197	Historic Hedgerows	N/A	Hedgerow	Medium	Access
BH198	Historic Hedgerows	N/A	Hedgerow	Medium	Access, minor excavation works
BH199	Historic Hedgerows	N/A	Hedgerow	Medium	Access
BH200	Historic Hedgerows	N/A	Hedgerow	Medium	Access
BH203/202	Historic Hedgerows	N/A	Hedgerow	Medium	Access
BH205	Scheduled Monument	DE153	Wat's Dyke 24m North East	High	Access, ground investigation
BH215	Scheduled Monument	DE047	Hafod-y-Bwlch Round Barrow	High	Access
BH215	Historic Hedgerows	N/A	Hedgerow	Medium	Access
BH217	Scheduled Monument	DE048	Croes-Foel Round Barrow	High	Access
BH218	Scheduled Monument	DE193	Moated Site near Groesfoel Farm	High	Access
BH218	Historic Hedgerows	N/A	Hedgerow	Medium	Access

8 Mitigation

- 8.1. A small number of designated and undesignated heritage assets have been identified within the assessment area which could be subject to direct impacts from the proposed work.
- 8.2. In the light of the assessment above, this section provides a description of the measures adopted to mitigate the identified impacts on heritage assets, together with a consideration of the residual effects of the development on heritage assets.

Mitigation Strategy

- 8.3. Heritage assets represent a non-renewable resource, and should be avoided wherever this is feasible in order to avoid damage or destruction. The purpose of mitigation is to avoid or reduce any adverse impacts that might result from the proposed scheme on the historic environment. The main strategy for minimising impacts from the scheme is avoidance, through careful planning, design and demarcation of sensitive assets. Where an impact is unavoidable, the reduction of that impact on the heritage asset necessitates detailed consideration of the site characteristics and the introduction of specific measures designed to limit the impact. These are addressed in the section that follows.
- 8.4. The client will be provided with digital data identifying the locations of all heritage assets which should be incorporated into all constraints mapping for the project.

- 8.5. Table 4 provides detailed mitigation options for those assets for which there may be a direct impact from the proposed refurbishment works

Mitigation Measures

- 8.6. Proposed access routes to each of the towers has been provided and taken into consideration whilst assessing the potential impact of the programme of work. The location of heritage assets should be taken into account during the planning stage and, if necessary, this assessment should be reviewed to evaluate any new information. Although none of the scheduled monuments, or listed buildings will be affected by the proposed refurbishment works, there is the potential for direct impacts from access works. There is also potential for direct impacts to a number of historic hedgerows. Of the numerous non-designated heritage assets within 175m of the overhead line, the majority are unlikely to be impacted by the proposed works, although potential impacts have been identified for 18 heritage assets, the mitigation for which is listed in Table 4.

Types of Identified Impact

Access

- 8.7. *Activity* There is the potential for direct impacts on four scheduled monuments, two listed buildings, a historic battlefield, an ancient woodland, and a number of non-designated assets through gaining vehicular access to the towers.
- 8.8. *Mitigation* The recommended mitigation is avoidance through careful planning. Access routes should be designed to avoid all known heritage assets.

Minor excavation works

- 8.9. *Activity* A number of towers are located along or close to historic hedgerows which could be affected as a result of minor excavation works. There is also the potential for a direct impact from any minor excavation works undertaken at towers BH29-BH34, BH24-BH29, BH38, BH35, BH90, BH91, BH93-BH95, BH173, BH172 and BH205 due to their proximity to or location within the site of a non-designated asset.
- 8.10. *Mitigation* If minor excavation works are required, a watching brief should be undertaken at towers BH24-BH39, BH35, BH172 and BH205.

Restringing of stay wires

- 8.11. *Activity* There is the potential for direct impacts on a number of non-designated assets through vehicle movement.
- 8.12. *Mitigation* The recommended mitigation is avoidance through careful planning of the works programme and specifically:
- No vehicular access across an asset
 - No positioning or operation of machinery within the immediate area of an asset
 - No storage of equipment or materials within the immediate area of an asset

Site Compounds and storage of materials

8.13. *Activity* No details are currently available regarding the positioning of site compounds and storage of material and equipment, although there is the potential for direct impacts on a number of designated and non-designated heritage assets.

8.14. *Mitigation* The recommended mitigation is avoidance through careful planning of the works programme, specifically:

- No storage of equipment or materials within the immediate area of an asset

Hedgerow Removals

8.15. *Activity.* The planned access routes for thirty-seven of the towers cross historic hedgerows while twenty two towers are positioned in close proximity to historic hedgerows (see Table 3) and the BH Line crosses a number of others. The refurbishment scheme has the potential to impact on these hedgerows at all stages of the scheme.

8.16. *Mitigation.* The recommended mitigation is avoidance through careful planning of the works programme, specifically:

- Any hedgerow removals should be checked against the results of this assessment to determine whether an historic hedgerow may be affected.
- Avoid removals of historic hedgerows
- Permission required to remove sections of historic hedgerow from conservation officers

Table 4: Specific Mitigation Measures for assets with potential direct impacts

Tower	Type	Ref	Value	Type of impact	Mitigation
BH9	Hedgerow	N/A	Medium	Access, minor excavation works	Preservation in situ Permission required to remove
BH12	Hedgerow	N/A	Medium	Access, minor excavation works	Preservation in situ Permission required to remove
BH13	Hedgerow	N/A	Medium	Access, minor excavation works	Preservation in situ Permission required to remove
BH24-BH29	Site of Medieval village	MCH5467	Medium	Minor excavation works.	Preservation in situ Avoid ground disturbance Watching brief
BH29-BH34	Historic Battlefield	MCH5614	Medium	Access, minor excavation works	Use of temporary trackways for access No excavation of new ground
BH31-BH32A	Farmstead Site	MCH23591	Medium	Access	Avoidance, Preservation in situ

BH32	Historic Hedgerows	N/A	Medium	Access, minor excavation works	Preservation in situ Permission required to remove
BH34	Historic Hedgerows	N/A	Medium	Access	Preservation in situ Permission required to remove
BH35	Potential burial site	MCH23676	Medium	Access, minor excavation works	Preservation in situ Avoid ground disturbance Watching brief
BH38	Possible Roman Road	MCH11052	Medium	Access, minor excavation works	Avoidance Preservation in situ Avoid ground disturbance
BH39	Historic Hedgerows	N/A	Medium	Access	Preservation in situ Permission required to remove
BH39	Possible Roman Road	MCH11052	Medium	Access	Avoidance, Preservation in situ
BH40	Historic Hedgerows	N/A	Medium	Access	Preservation in situ Permission required to remove
BH41	Historic Hedgerows	N/A	Medium	Access	Preservation in situ Permission required to remove
BH47	Historic Hedgerows	N/A	Medium	Access, minor excavation works	Preservation in situ Permission required to remove
BH49	Historic Hedgerows	N/A	Medium	Access, minor excavation works	Preservation in situ Permission required to remove
BH51	Historic Hedgerows	N/A	Medium	Access	Preservation in situ Permission required to remove
BH52	Historic Hedgerow	N/A	Medium	Access	Preservation in situ Permission required to remove
BH53	Historic Hedgerow	N/A	Medium	Access	Preservation in situ Permission required to remove
BH55	Historic Hedgerow	N/A	Medium	Access	Preservation in situ Permission required to remove
BH58	Historic Hedgerow	N/A	Medium	Access, minor excavation works	Preservation in situ Permission required to remove
BH60	Farmstead Site	MCH23653	Low	Access	Avoidance, Preservation in situ
BH61	Farmstead Site	MCH23653	Low	Access	Avoidance, Preservation in situ

BH69	Historic Hedgerow	N/A	Medium	Access, minor excavation works	Preservation in situ Permission required to remove
BH71	Historic Hedgerow	N/A	Medium	Access, minor excavation works	Preservation in situ Permission required to remove
BH73	Historic Hedgerow	N/A	Medium	Access	Preservation in situ Permission required to remove
BH75	Historic Hedgerow	N/A	Medium	Access	Preservation in situ Permission required to remove
BH84-BH85	House Site	MCH24891	Medium	Scaffolding	Avoidance, Preservation in situ
BH90-BH91	Wetland	MCH25281	Medium	Access, minor excavation works	Preservation in situ Avoid ground disturbance
BH92	Wetland	MCH25281	Medium	Access	Preservation in situ Avoid ground disturbance
BH93-BH95	Wetland	MCH25281	Medium	Access, minor excavation works	Preservation in situ Avoid ground disturbance
BH103	Historic Hedgerow	N/A	Medium	Access, minor excavation works	Preservation in situ Permission required to remove
BH104	Historic Hedgerow	N/A	Medium	Access, minor excavation works	Preservation in situ Permission required to remove
BH106	Listed Building	1130623; 1135855	High	Access	Avoidance, Preservation in situ
BH108	Railway Line	MCH24334	Medium	Access	Avoidance, Preservation in situ
BH109	Historic Hedgerow	N/A	Medium	Access, minor excavation works	Preservation in situ Permission required to remove
BH115-BH116	Listed Building	1312878	High	Minor excavation works	Avoidance, Preservation in situ
BH116	Roman Road	MCH989	Medium	Access, ground investigation	Avoidance, Preservation in situ Avoid ground disturbance Watching brief
BH122	Historic Hedgerows	N/A	Medium	Access, minor excavation works	Preservation in situ Permission required to remove
BH123	Historic Hedgerows	N/A	Medium	Access, minor excavation works	Preservation in situ Permission required to remove

BH127	Historic Hedgerows	N/A	Medium	Access	Preservation in situ Permission required to remove
BH128A	Historic Hedgerows	N/A	Medium	Access	Preservation in situ Permission required to remove
BH129	Historic Hedgerows	N/A	Medium	Access, minor excavation works	Preservation in situ Permission required to remove
BH130	Historic Hedgerows	N/A	Medium	Access	Preservation in situ Permission required to remove
BH131	Historic Hedgerows	N/A	Medium	Access	Preservation in situ Permission required to remove
BH133	Historic Hedgerows	N/A	Medium	Access	Preservation in situ Permission required to remove
BH134	Historic Hedgerows	N/A	Medium	Access	Preservation in situ Permission required to remove
BH135	Historic Hedgerows	N/A	Medium	Access, minor excavation works	Preservation in situ Permission required to remove
BH136	Historic Hedgerows	N/A	Medium	Access	Preservation in situ Permission required to remove
BH138	Historic Hedgerows	N/A	Medium	Access	Preservation in situ Permission required to remove
BH139	Historic Hedgerows	N/A	Medium	Access	Preservation in situ Permission required to remove
BH140	Historic Hedgerows	N/A	Medium	Access, minor excavation works	Preservation in situ Permission required to remove
BH143	Listed Building – Site of Moat	265	Medium	Access, minor excavation works	Avoidance, Preservation in situ, Watching Brief
BH144	Listed Building – Site of Moat	265	Medium	Access	Avoidance, Preservation in situ
BH148	Historic Hedgerows	N/A	Medium	Access	Preservation in situ Permission required to remove
BH149	Historic Hedgerows	N/A	Medium	Access	Preservation in situ Permission required to remove
BH150	Historic Hedgerows	N/A	Medium	Access	Preservation in situ Permission required to remove
BH156	Historic Hedgerows	N/A	Medium	Access, minor excavation works	Preservation in situ Permission required to remove

BH159	Historic Hedgerows	N/A	Medium	Access	Preservation in situ Permission required to remove
BH160	Historic Hedgerows	N/A	Medium	Access, minor excavation works	Preservation in situ Permission required to remove
BH163	Historic Hedgerows	N/A	Medium	Access	Preservation in situ Permission required to remove
BH169	Historic Hedgerows	N/A	Medium	Access	Preservation in situ Permission required to remove
BH171A	Historic Hedgerows	N/A	Medium	Access	Preservation in situ Permission required to remove
BH172	Historic Hedgerows	N/A	Medium	Access	Preservation in situ Permission required to remove
BH172	Boat building site	PRN19364	Medium	Access, minor excavation works	Avoidance, Preservation in situ Watching Brief
BH173	Undesignated	PRN101840	Medium	Access, minor excavation works	Avoidance, Preservation in situ
BH175	Historic Hedgerows	N/A	Medium	Access	Preservation in situ Permission required to remove
BH176	Historic Hedgerows	N/A	Medium	Access	Preservation in situ Permission required to remove
BH176A	Historic Hedgerows	N/A	Medium	Access	Preservation in situ Permission required to remove
BH184	Historic Hedgerows	N/A	Medium	Access	Preservation in situ Permission required to remove
BH185	Ancient Woodland	37155	Medium	Access	Preservation in situ Permission required to remove
BH191	Historic Hedgerows	N/A	Medium	Access, minor excavation works	Preservation in situ Permission required to remove
BH194/193	Historic Hedgerows	N/A	Medium	Access	Preservation in situ Permission required to remove
BH197	Historic Hedgerows	N/A	Medium	Access	Preservation in situ Permission required to remove
BH198	Historic Hedgerows	N/A	Medium	Access, minor excavation works	Preservation in situ Permission required to remove
BH199	Historic Hedgerows	N/A	Medium	Access	Preservation in situ Permission required to remove

BH200	Historic Hedgerows	N/A	Medium	Access	Preservation in situ Permission required to remove
BH203/202	Historic Hedgerows	N/A	Medium	Access	Preservation in situ Permission required to remove
BH205	Wat's Dyke	DE153	High	Access, ground investigation	Avoidance, Preservation in situ Avoid ground disturbance Watching Brief
BH215	Scheduled Monument	DE047	High	Access	Avoidance, Preservation in situ Avoid ground disturbance
BH215	Historic Hedgerows	N/A	Medium	Access	Preservation in situ Permission required to remove
BH217	Scheduled Monument	DE048	High	Access	Avoidance, Preservation in situ Avoid ground disturbance
BH218	Scheduled Monument	DE193	High	Access	Avoidance, Preservation in situ Avoid ground disturbance
BH218	Historic Hedgerows	N/A	Medium	Access	Preservation in situ Permission required to remove

8.17. The assessment and recommended mitigation should be reviewed once further details become available regarding and site compounds and before the scheme is finalised.

9 Sources

Historic Environment Record (Clwyd Powys Archaeological Trust search E6787, and Cheshire Shared Services search 12245)

Published sources

Cadw/ICOMOS., 1999. *Register of Landscapes of Special Historic Interest in Wales: part 1 Parks and Gardens – Powys*. Cardiff: Cadw.

Cadw, 2007. *Guide to good practice on using the Register of Landscapes of Historic Interest in Wales in the Planning and Development Process*. 2nd (revised) Edition. Cardiff: Cadw.

Cadw, 2011. *Conservation Principles for the Sustainable Management of the Historic Environment in Wales*. Cardiff: Welsh Assembly Government/Cadw.

The Design Manual for Roads and Bridges (DMRB) 2020. LA 106 – Cultural heritage assessment

Cartographic sources

Tithe Surveys:

1839	Eclusham
1840	Marchwiell
1840	Bangor
1838	Worthenbury
1838	Macefen
1840	Malpas
1838	Tushigham Cum Grindley
1838	Norbury
1842	Bickley
1843	Wrenbury Cum Frith
1839	Baddiley
1841	Burland
1842	Acton
1840	Henhull
1839	Alvaston
1838	Woolstanwood

1872 Ordnance Survey 1:2500 1st edition Denbighshire XXVIII

1897 Ordnance Survey 1:2500 1st edition Denbighshire XXIX

Appendix 1: Methodology for assessing the potential impacts of development on heritage assets

General

The primary aim of any assessment is to identify the heritage assets within a Development Area in as far as constraints such as varying land-use allow, and to provide a report on them which should enable the reader to understand their historical context, offer guidance on their level of importance, whether national, regional or local, identify the significance of impact that the development might have upon them, and recommend mitigation to limit the impact of the development on them.

Impacts and Effects

The development may affect a heritage asset in one of several ways:

- i) **Direct Impact:** A direct impact upon a heritage asset involves the physical alteration or destruction of the latter as a result of the construction, operation or decommissioning of a development. Direct impacts could include the site clearance, reduction of levels, foundations, services, access roads etc.
- ii) **Indirect Impact:** Sometimes known as a secondary impact. An indirect impact arises where the connection between the development and the asset is remote or unpredictable and can affect an asset lying outside the development area. An indirect impact can be physical or visual, and in certain circumstances noise, smell and the like might also be considered under this heading. It should be noted too that in Wales, visual intrusion is normally considered to be indirect, but in England it appears to be classed as a direct impact. More detailed

descriptions are offered in Guide to Good Practice on Using the Register of Landscapes of Historic Interest in Wales in the Planning and Development Process (Cadw 2007).

- iii) **Cumulative Impact:** A cumulative impact may arise from the multiple effects of the same development on a single asset, or the multiple effects of the development and of other developments on an asset.

It should be noted that the terms impact and effect are frequently used interchangeably, although there are fine gradations in the meanings of the two words. On occasions these are both used in reports though without explanation.

The Assessment Methodology

It is a general tenet in conservation strategies that heritage assets represent a non-renewable resource, and should be avoided wherever this is feasible in order to avoid damage or destruction. All sites can be classified according to a system based on that provided for the assessment of heritage assets in the *Design Manual for Roads and Bridges* (LA 106), revised in January 2020.

The classification of any undesignated asset is based on the collective professional judgement and expertise of the field staff of CPAT using information both from existing records and the field visits to selected assets.

The relative value (importance) of a heritage asset, as given in greater detail in DMRB (2007) is laid out in Table 1.

Table 1 Factors for Assessing the Value of Heritage Assets

Factors for Assessing the Value of Heritage Assets	
Very High	World Heritage Sites (including those nominated). Assets of acknowledged international importance. Assets that can contribute significantly to acknowledged international research objectives.
High	Scheduled Monuments (including those proposed). Undesignated monuments of which could potentially be worthy of scheduling. Listed Buildings. Assets that can contribute significantly to acknowledged national research objectives.
Medium	Conservation Areas. Designated or undesignated assets that contribute to regional research objectives.
Low	Designated and undesignated assets of local importance. Assets compromised by poor preservation and/or poor survival of contextual associations.

	Assets of limited value, but with the potential to contribute to local research objectives.
Negligible	Assets with very little or no surviving heritage interest.
Unknown	The importance of the resource has not been ascertained.

Factors that need to be considered in assessing the magnitude of the impact are given in Table 2, based on the DMRB (2020), but in modified form, for each historic environment sub-topic (archaeological remains, historic buildings, historic landscapes etc) has its own set of factors, which are set out in great detail in the Design Manual.

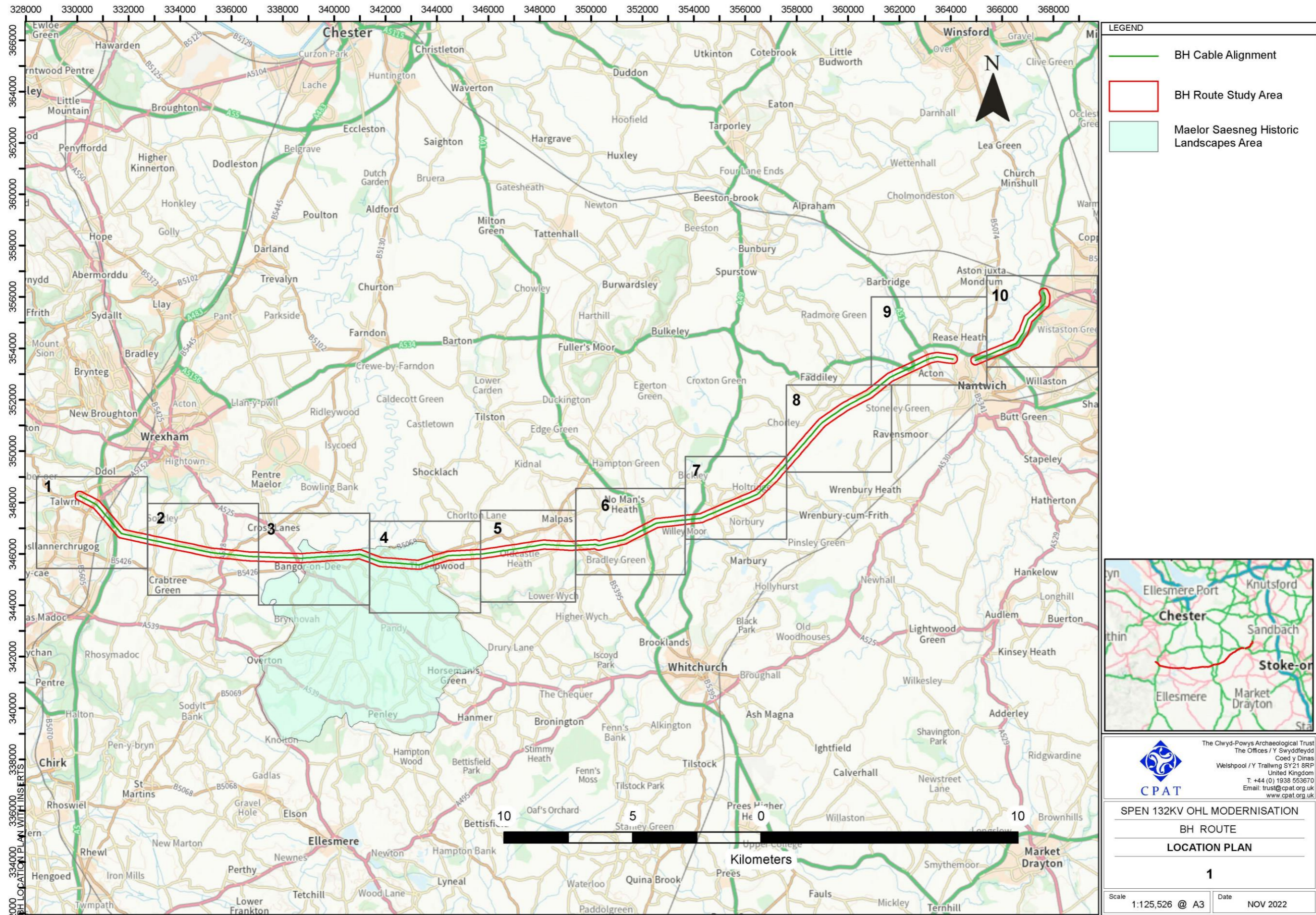
Table 2 Factors in the Assessment of the Magnitude of Impacts

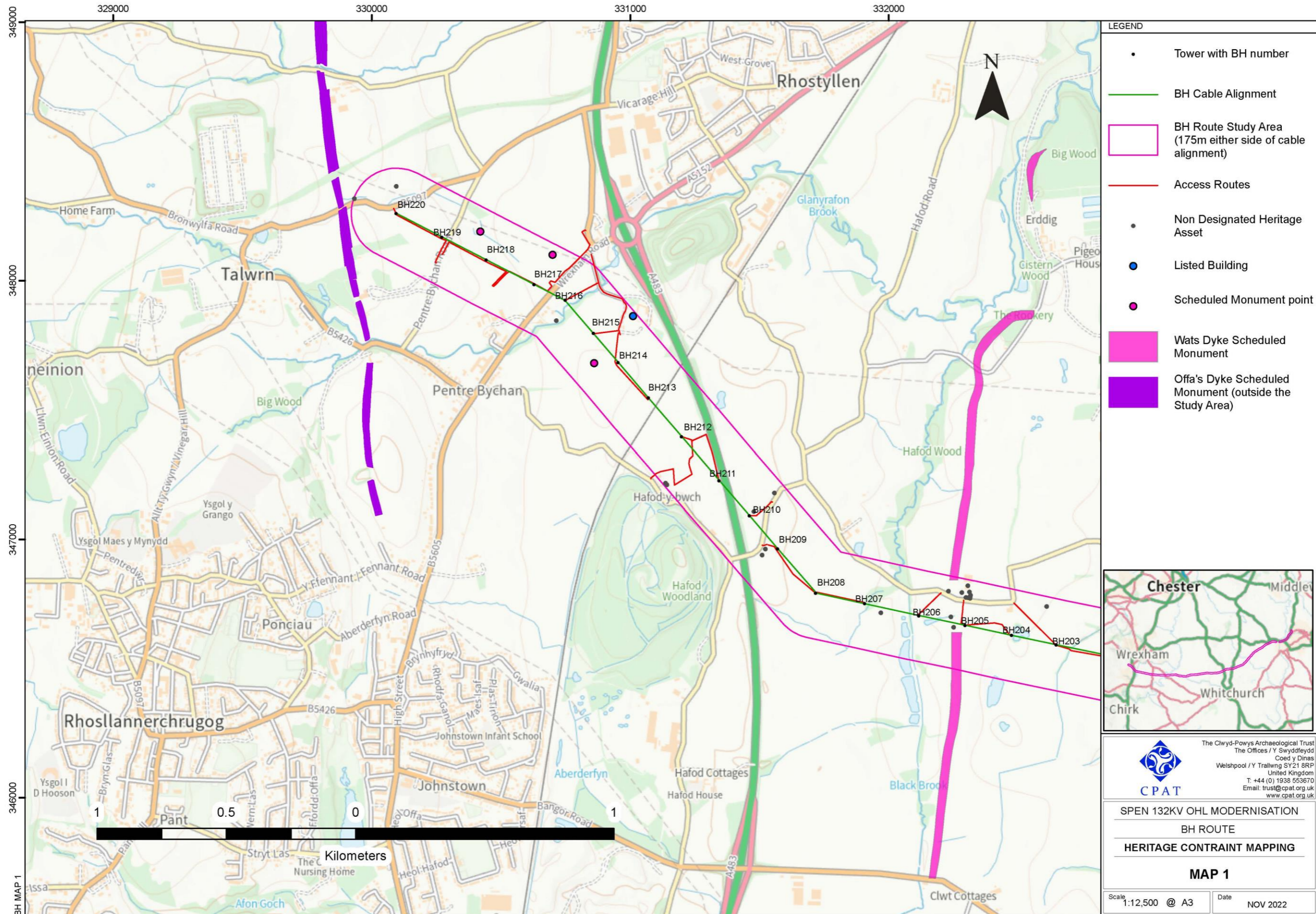
Factors in the Assessment of Magnitude of Direct Impacts	
Major	Change to most or all key heritage elements, such that the resource is totally altered.
Moderate	Changes to many key heritage elements, such that the resource is clearly modified.
Minor	Changes to key heritage elements, such that the asset is slightly altered or different
Negligible	Very minor changes to heritage elements.
No Change	No change

The significance of the impact of a development on a particular heritage asset is then established from the matrix (Table 3) also taken from the DMRB (2020).

Table 3 Matrix for Assessing the Significance of Direct Impacts of the Proposed Development upon Heritage Assets

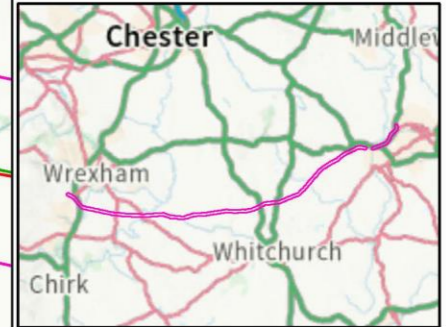
Magnitude of Impact	Value/Sensitivity of Heritage Asset				
	Very High	High	Medium	Low	Negligible
Major	Very Large	Large/Very Large	Moderate/Large	Slight/Moderate	Slight
Moderate	Large/Very Large	Moderate/Large	Moderate	Slight	Neutral/Slight
Minor	Moderate/Large	Moderate/Slight	Slight	Neutral/Slight	Neutral/Slight
Negligible	Slight	Slight	Neutral/Slight	Neutral/Slight	Neutral
No Change	Normal	Neutral	Neutral	Neutral	Neutral





LEGEND

- Tower with BH number
- BH Cable Alignment
- BH Route Study Area (175m either side of cable alignment)
- Access Routes
- Non Designated Heritage Asset
- Listed Building
- Scheduled Monument point
- Wats Dyke Scheduled Monument
- Offa's Dyke Scheduled Monument (outside the Study Area)



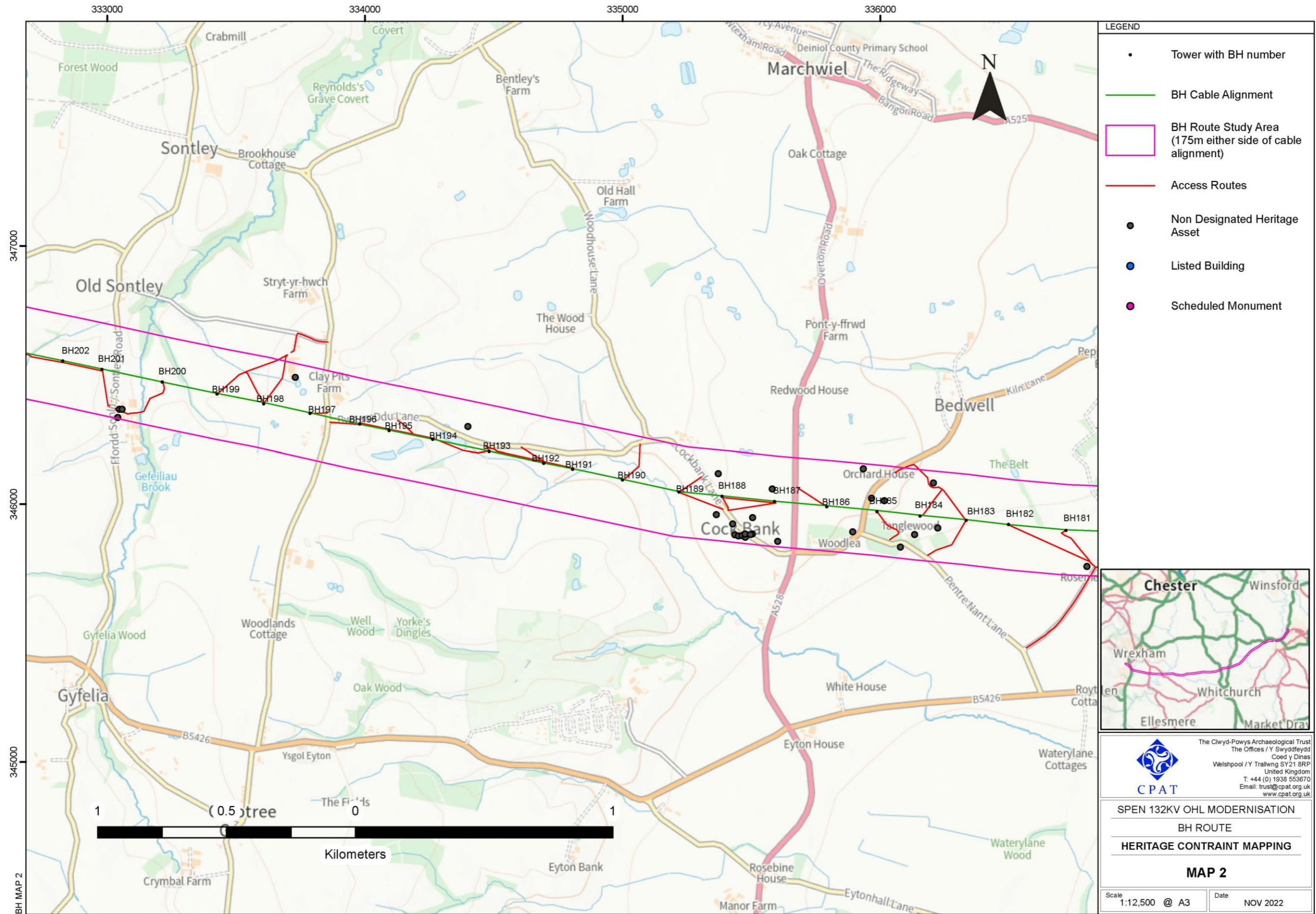
The Clwyd-Powys Archaeological Trust
The Offices / Y Swyddfeydd
Coed y Dinas
Welshpool / Y Trilwng SY21 8RP
United Kingdom
T: +44 (0) 1938 553670
Email: trust@cpat.org.uk
www.cpat.org.uk

CPAT

SPEN 132KV OHL MODERNISATION
BH ROUTE
HERITAGE CONSTRAINT MAPPING

MAP 1

Scale 1:12,500 @ A3 Date NOV 2022



- LEGEND**
- Tower with BH number
 - BH Cable Alignment
 - BH Route Study Area (175m either side of cable alignment)
 - Access Routes
 - Non Designated Heritage Asset
 - Listed Building
 - Scheduled Monument



The Clwyd-Powys Archaeological Trust
The Offices / Y Swyddfeysddi
Coed y Dinas
Welshpool / Y Trallwng SY21 8RF
United Kingdom
T: +44 (0) 1938 553670
Email: trust@cpat.org.uk
www.cpat.org.uk

CPAT

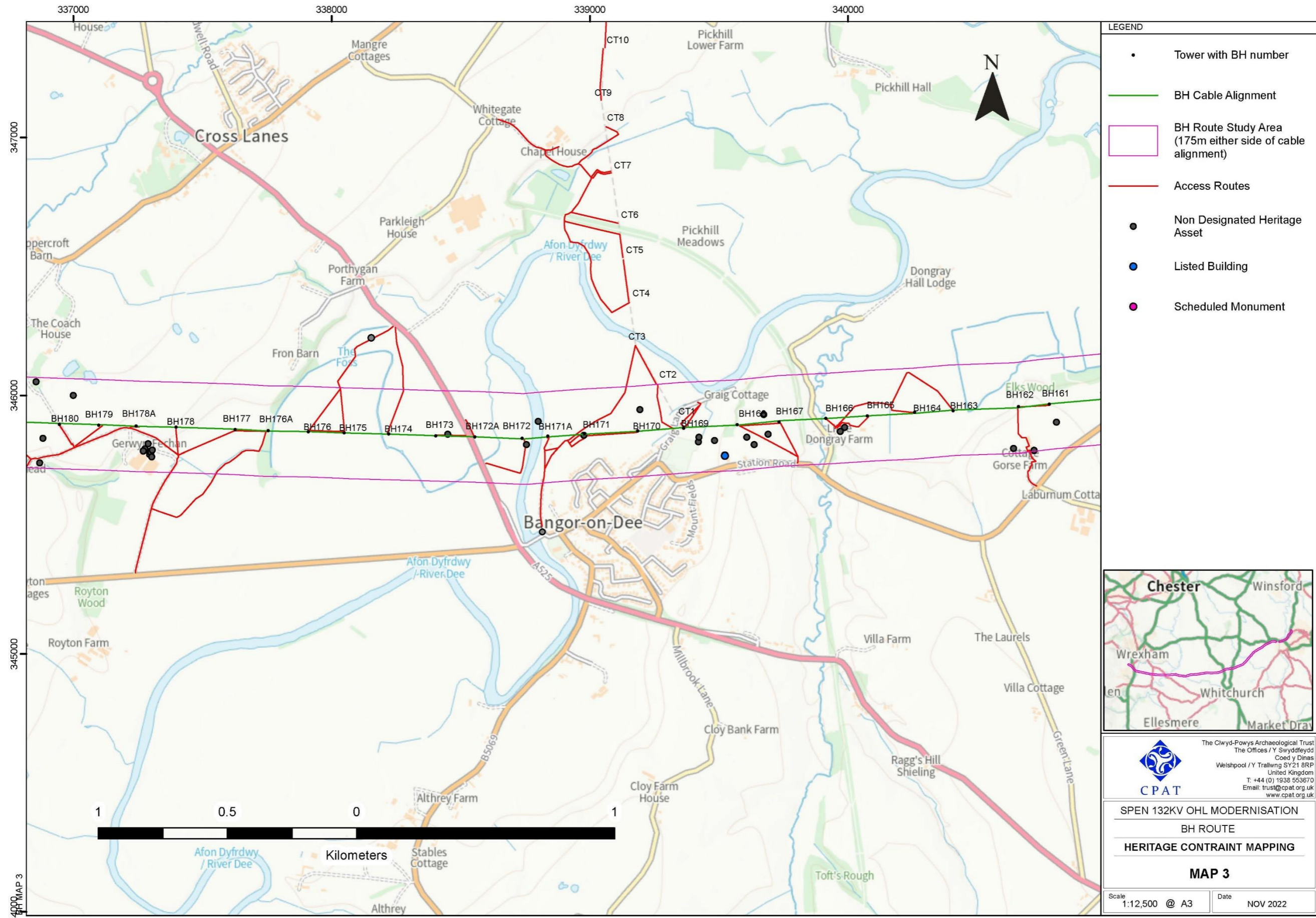
SPEN 132KV OHL MODERNISATION
BH ROUTE
HERITAGE CONTRAINT MAPPING

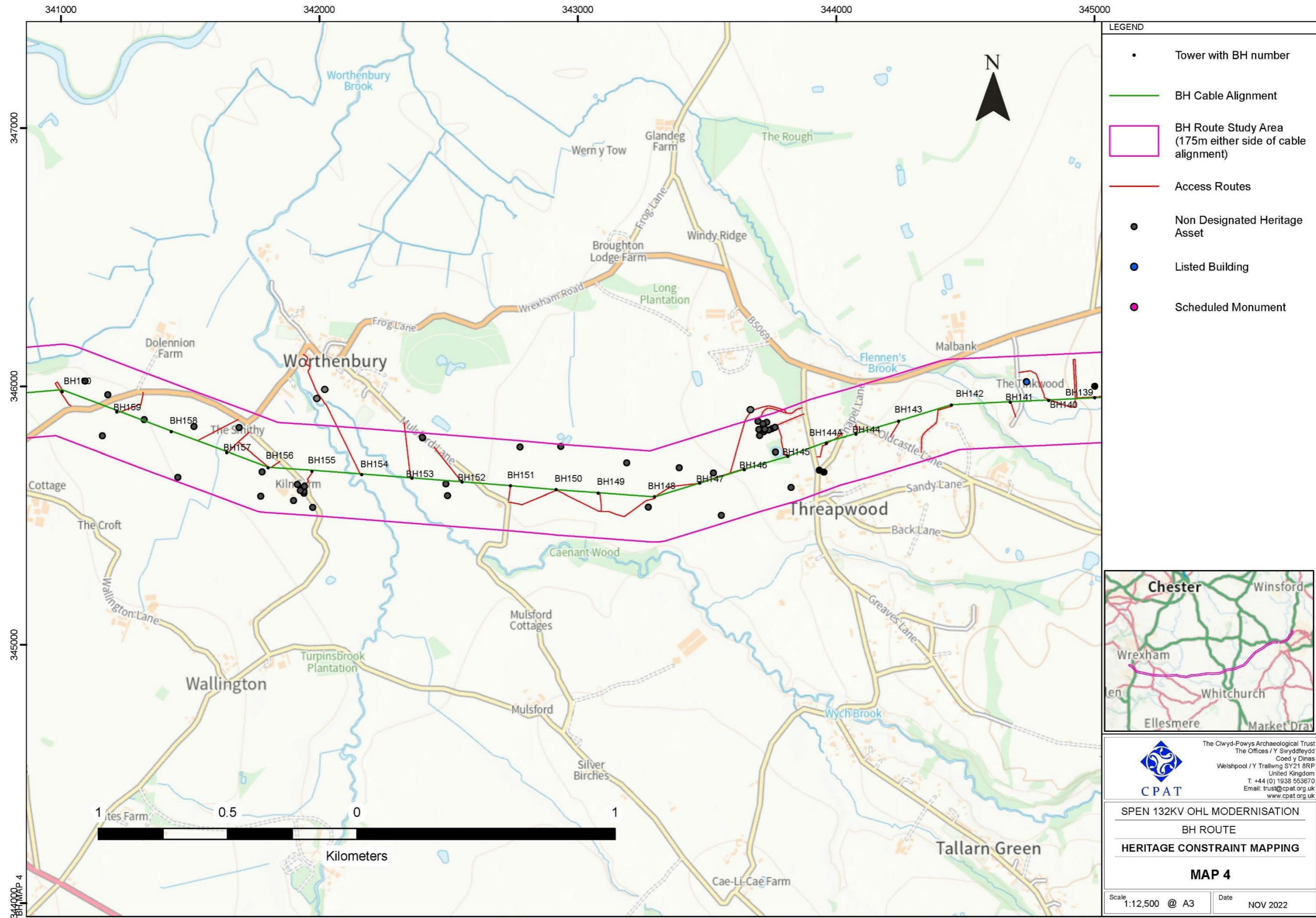
MAP 2

Scale 1:12,500 @ A3 Date NOV 2022

© Crown copyright [and database rights] (2021) OS Open Data

© This drawing and its content are the copyright of Clwyd-Powys Archaeological Trust and may not be reproduced or amended except by prior written permission. Clwyd-Powys Archaeological Trust accepts no liability for any amendments made by other persons.





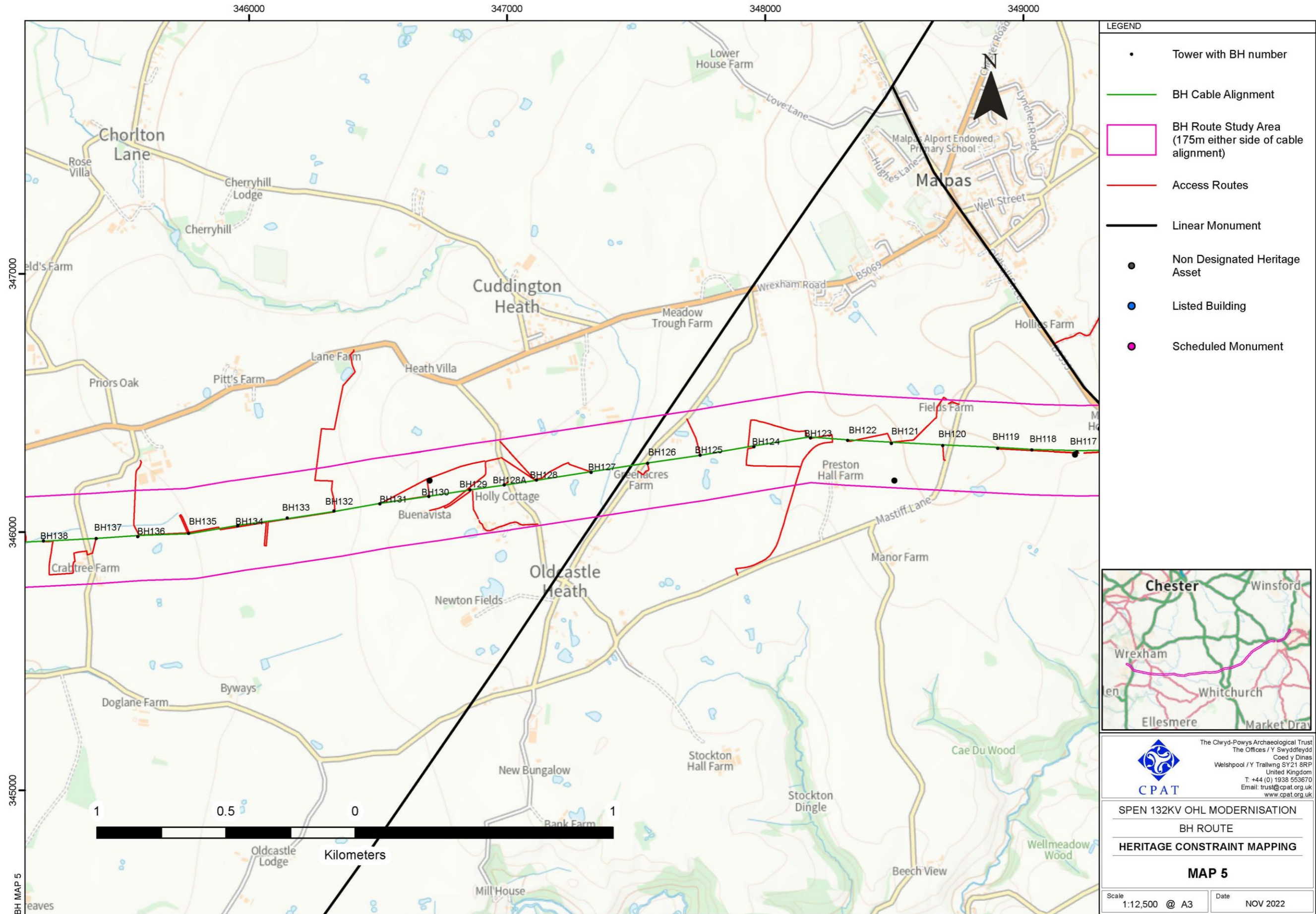
- LEGEND
- Tower with BH number
 - BH Cable Alignment
 - BH Route Study Area (175m either side of cable alignment)
 - Access Routes
 - Non Designated Heritage Asset
 - Listed Building
 - Scheduled Monument



The Clwyd-Powys Archaeological Trust
 The Offices / Y Swyddfeydd
 Coed y Dinas
 Welshpool / Y Trallwng SY21 8RP
 United Kingdom
 T: +44 (0) 1938 553670
 Email: trust@cpat.org.uk
 www.cpat.org.uk

SPEN 132KV OHL MODERNISATION
 BH ROUTE
 HERITAGE CONSTRAINT MAPPING

MAP 4
 Scale 1:12,500 @ A3 Date NOV 2022



LEGEND

- Tower with BH number
- BH Cable Alignment
- ▭ BH Route Study Area (175m either side of cable alignment)
- Access Routes
- Linear Monument
- Non Designated Heritage Asset
- Listed Building
- Scheduled Monument



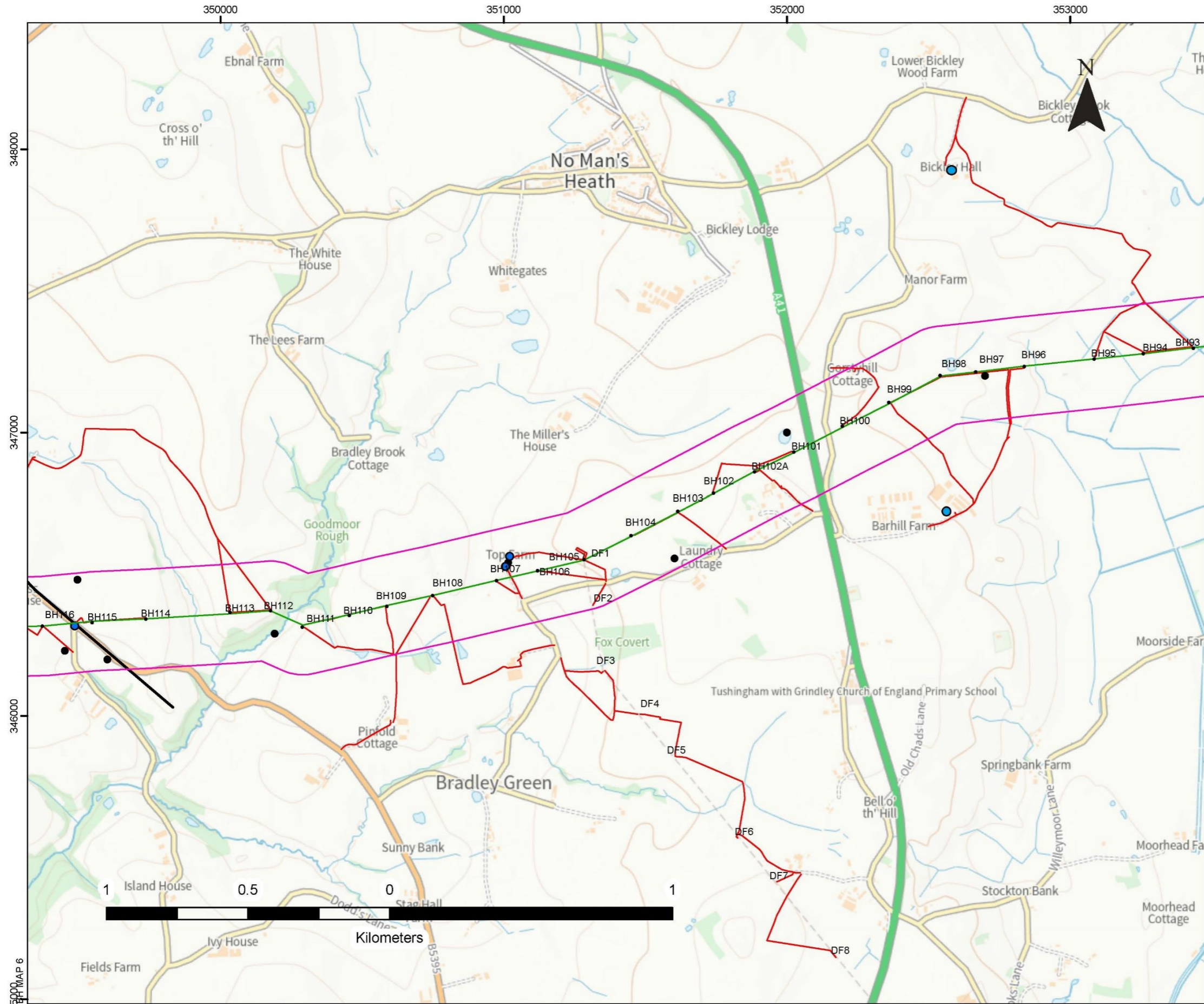
The Clwyd-Powys Archaeological Trust
The Offices / Y Swyddfeydd
Coed y Dinas
Weishpool / Y Trallwng SY21 8RP
United Kingdom
T: +44 (0) 1938 553670
Email: trust@cpat.org.uk
www.cpat.org.uk

CPAT

SPEN 132KV OHL MODERNISATION
BH ROUTE
HERITAGE CONSTRAINT MAPPING

MAP 5

Scale 1:12,500 @ A3 Date NOV 2022



LEGEND

- Tower with BH number
- BH Cable Alignment
- BH Route Study Area (175m either side of cable alignment)
- Access Routes
- Linear Monument
- Non Designated Heritage Asset
- Listed Building
- Scheduled Monument



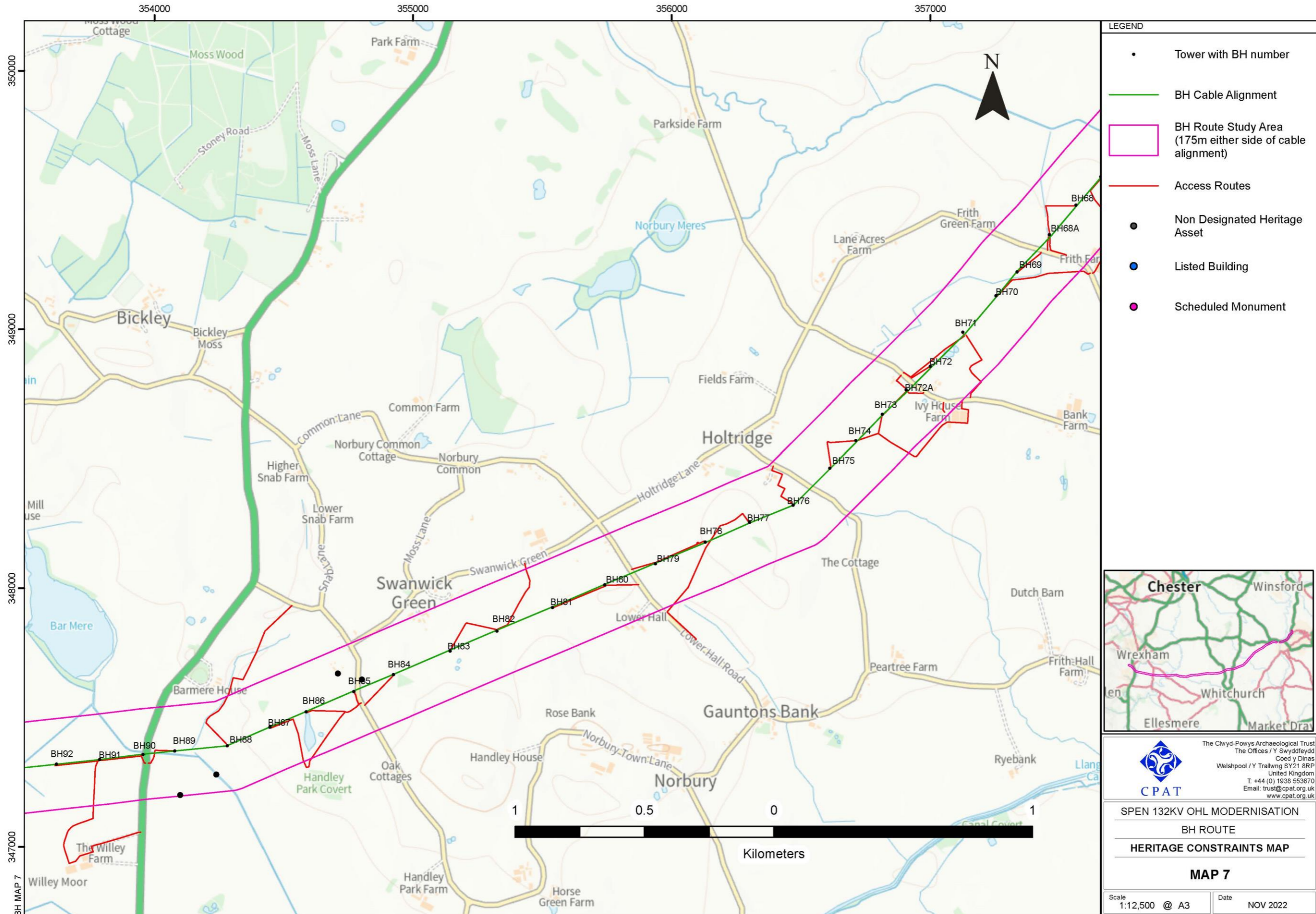
The Cwyd-Powys Archaeological Trust
The Offices / Y Swyddeydd
Coed y Dinas
Welshpool / Y Trallwng SY21 8RP
United Kingdom
T: +44 (0) 1938 553670
Email: trust@cpat.org.uk
www.cpat.org.uk

CPAT

SPEN 132KV OHL MODERNISATION
BH ROUTE
HERITAGE CONSTRAINT MAPPING

MAP 6

Scale 1:12,500 @ A3 Date NOV 2022



- LEGEND**
- Tower with BH number
 - BH Cable Alignment
 - BH Route Study Area (175m either side of cable alignment)
 - Access Routes
 - Non Designated Heritage Asset
 - Listed Building
 - Scheduled Monument



The Clwyd-Powys Archaeological Trust
The Offices / Y Swyddfeydd
Coed y Dinas
Welshpool / Y Trilwng SY21 8RP
United Kingdom
T: +44 (0) 1938 553670
Email: trust@cpat.org.uk
www.cpat.org.uk

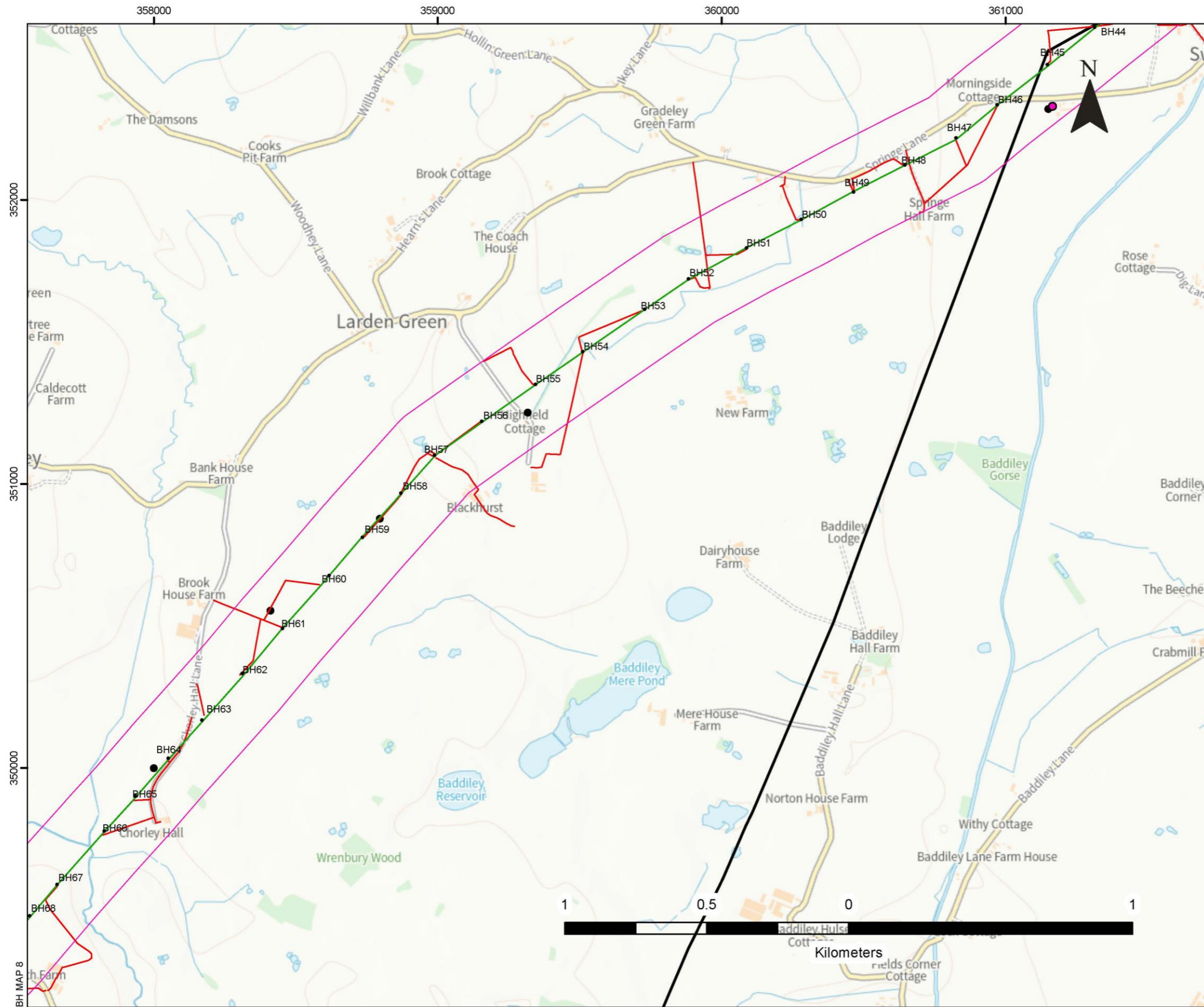
CPAT

SPEN 132KV OHL MODERNISATION
BH ROUTE
HERITAGE CONSTRAINTS MAP
MAP 7

Scale 1:12,500 @ A3 Date NOV 2022

© Crown copyright [and database rights] (2021) OS Open Data

© This drawing and its content are the copyright of Clwyd-Powys Archaeological Trust and may not be reproduced or amended except by prior written permission. Clwyd-Powys Archaeological Trust accepts no liability for any amendments made by other persons.



LEGEND

- Tower with BH number
- BH Cable Alignment
- BH Route Study Area (175m either side of cable alignment)
- Access Routes
- Linear Monument
- Non Designated Heritage Asset
- Listed Building
- Scheduled Monument



The Clwyd-Powys Archaeological Trust
The Offices / Y Swyddfeydd
Coed y Dinas
Welshpool / Y Trallwng SY21 8RP
United Kingdom
T: +44 (0) 1938 553670
Email: trust@cpat.org.uk
www.cpat.org.uk

CPAT

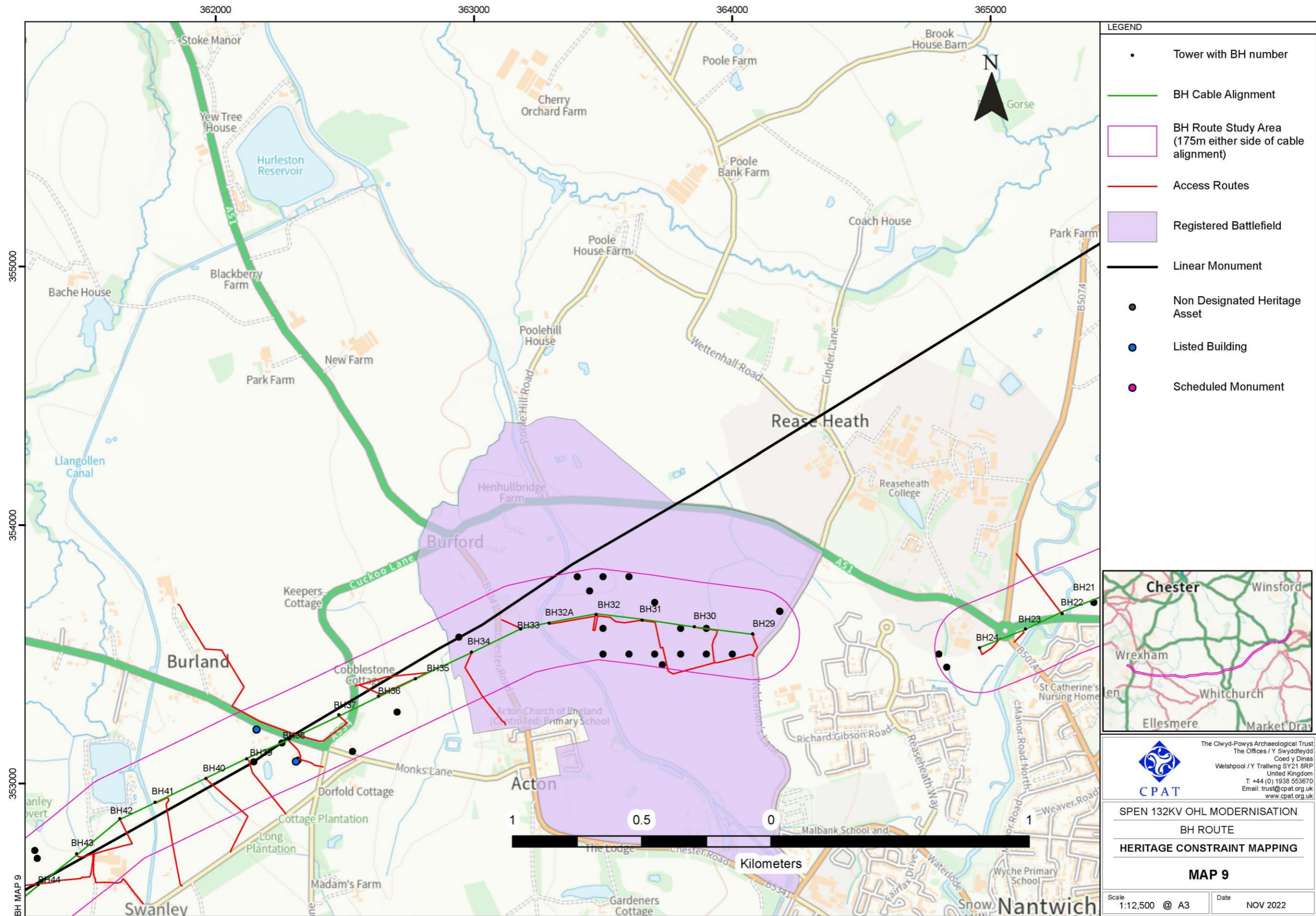
SPEN 132KV OHL MODERNISATION
BH ROUTE
HERITAGE CONSTRAINT MAPPING

MAP 8

Scale 1:12,500 @ A3 Date NOV 2022

© Crown copyright [and database rights] (2021) OS Open Data

© This drawing and its content are the copyright of Clwyd-Powys Archaeological Trust and may not be reproduced or amended except by prior written permission. Clwyd-Powys Archaeological Trust accepts no liability for any amendments made by other persons.



- LEGEND
- Tower with BH number
 - BH Cable Alignment
 - BH Route Study Area (175m either side of cable alignment)
 - Access Routes
 - Registered Battlefield
 - Linear Monument
 - Non Designated Heritage Asset
 - Listed Building
 - Scheduled Monument



The Clwyd-Powys Archaeological Trust
The Offices / Y Swyddfeidd
Coed y Dinas
Welshpool / Y Trilwng SY21 8RP
United Kingdom
T: +44 (0) 1938 553670
Email: trust@cpat.org.uk
www.cpat.org.uk

CPAT

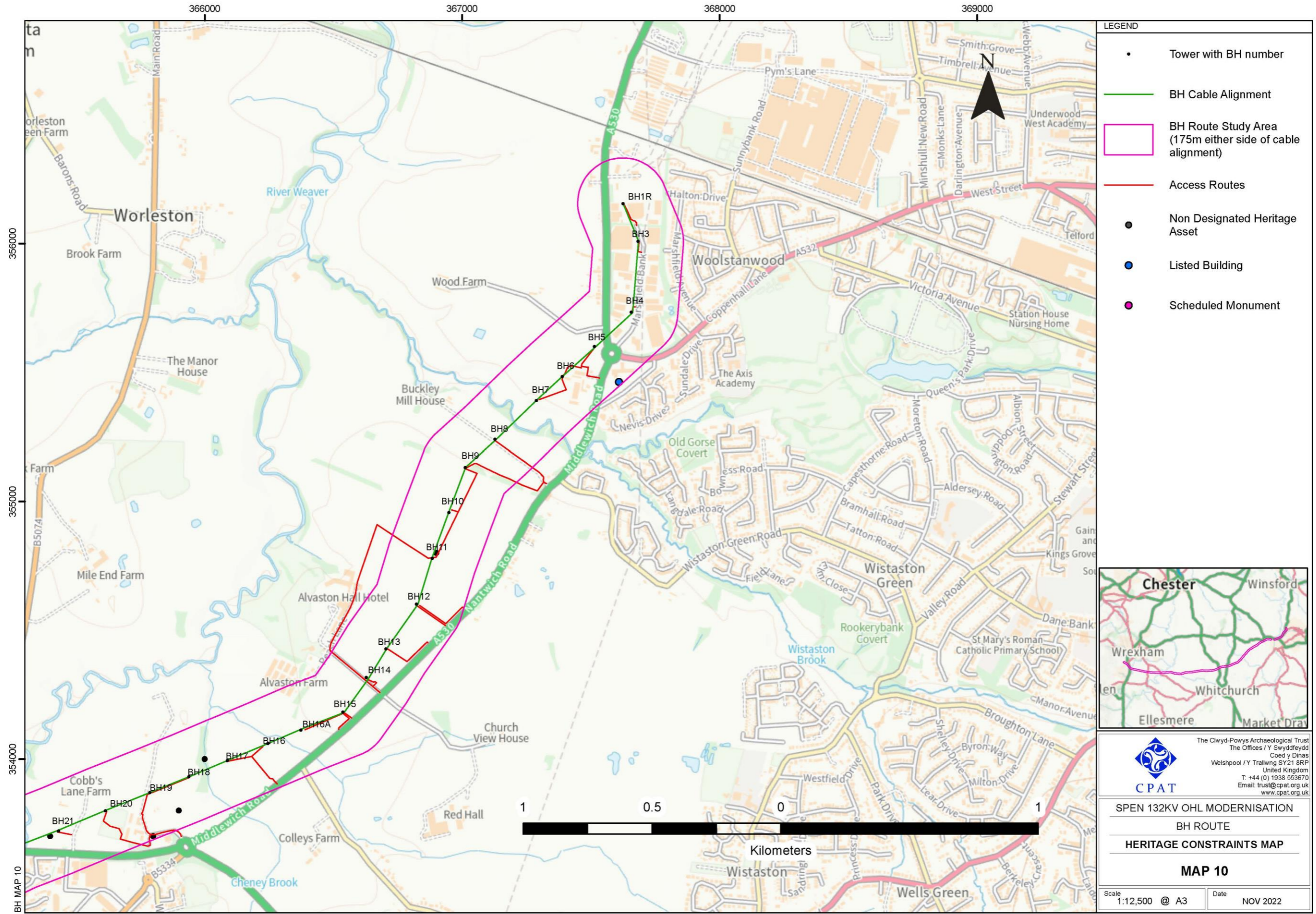
SPEN 132KV OHL MODERNISATION
BH ROUTE
HERITAGE CONSTRAINT MAPPING

MAP 9

Scale 1:12,500 @ A3 Date NOV 2022

© Crown copyright [and database rights] (2021) OS Open Data

© This drawing and its content are the copyright of Clwyd-Powys Archaeological Trust and may not be reproduced or amended except by prior written permission. Clwyd-Powys Archaeological Trust accepts no liability for any amendments made by other persons.



- LEGEND**
- Tower with BH number
 - BH Cable Alignment
 - BH Route Study Area (175m either side of cable alignment)
 - Access Routes
 - Non Designated Heritage Asset
 - Listed Building
 - Scheduled Monument



The Clwyd-Powys Archaeological Trust
The Offices / Y Swyddfaedd
Coed y Dinas
Welshpool / Y Trallwng SY21 8RP
United Kingdom
T: +44 (0) 1938 653670
Email: trust@cpat.org.uk
www.cpat.org.uk

CPAT

SPEN 132KV OHL MODERNISATION
BH ROUTE
HERITAGE CONSTRAINTS MAP

MAP 10

Scale 1:12,500 @ A3 Date NOV 2022

© Crown copyright [and database rights] (2021) OS Open Data

© This drawing and its content are the copyright of Clwyd-Powys Archaeological Trust and may not be reproduced or amended except by prior written permission. Clwyd-Powys Archaeological Trust accepts no liability for any amendments made by other persons.