

# *Archaeology Wales*

## **Llanelly House, Llanelli, Carmarthenshire**

### **Part 3 - Volume 1 of 2 Appendix II - Photo Plates**

**(Part 3 of 4)**

Archaeological Building Investigation and Recording  
& Watching Brief



By

Richard Scott Jones (BA, MA, MCIfA)

Report No. 1296



Archaeology Wales Limited,  
Rhos Helyg, Cwm Belan,  
Llanidloes, Powys SY18 6QF  
Tel: +44 (0) 1686 440371  
E-mail: [admin@arch-wales.co.uk](mailto:admin@arch-wales.co.uk)

# *Archaeology Wales*

## **Llanelly House, Llanelli, Carmarthenshire**

### **Part 3 - Volume 1 of 2 Appendix II - Photo Plates**

**(Part 3 of 4)**

Archaeological Building Investigation and Recording  
& Watching Brief

*Prepared for:* Carmarthenshire Heritage Regeneration Trust

Edited by: Mark Houliston

Signed: *Mark Houliston*

Position: MD

Date: 22/6/15

Authorised by: Mark Houliston

Signed: *Mark Houliston*

Position: MD

Date: 22/6/15

By

Richard Scott Jones (BA, MA, MCIfA)

Report No. 1296

**December 2014**



Archaeology Wales Limited,  
Rhos Helyg, Cwm Belan,  
Llanidloes, Powys SY18 6QF  
Tel: +44 (0) 1686 440371  
E-mail: admin@arch-wales.co.uk



*Due to the size of this report, in order to make it more manageable it has been divided into four (4) individual parts.*

PART 1 - Report Text, Bibliography and References.

PART 2 - Appendix I - Figure and Illustrations

PART 3 - Appendix II - Photo Plates (Volumes 1 and 2)

PART 4 - Appendix III - Finds, Contexts and Levels Registers and Archive Cover Sheet

This part is PART 3 - **Appendix II - Photo Plates (Volume 1 of 2)**

## **Contents**

### **VOLUME 1**

#### *Exterior*

Plates 01 - 24: Exterior Views of house prior to removal of render

Plates 25 - 44: Exterior views of house following removal of cement render from all elevations

Plates 45 - 56: Detail shots of Lead drainage Hoppers

Plates 57 - 62: North facing elevation following render removal

Plates 63 - 70: West facing elevation following render removal

Plates 71 - 83: South facing elevation following render removal

Plates 84 - 92: East facing elevation following render removal

Plates 93 - 103: Roof area

#### *Interior*

*Ground Floor (Standing Building Recording and Watching Brief)*

Plates 104 - 154: Room G1 - The Great Hall

Plates 155 - 194: Room G2 - Sir Thomas Stepney's Study

Plates 195a - 268: Room G3 and Basement - Common Hall or Service Hall and Cellar

*Continued in Part 3 - Appendix II - Volume 2 .....*

#### **Copyright Notice:**

*Archaeology Wales Ltd and Richard Scott Jones retain copyright of this report under the Copyright, Designs and Patents Act, 1988, and have granted a licence to Llanelli Town Council and Carmarthenshire Heritage Regeneration Trust (CHRT) to use and reproduce the material contained within.*

# *Archaeology* *Wales*

## **APPENDIX II: Photo Plates (Volume 1 of 2)**



*Plate 1. Llanelly House prior to restoration work in February 2011. Looking south from St. Elli Church tower.*



*Plate 2. Llanelly House prior to restoration work in February 2011. Looking southeast from War Memorial in church cemetery.*

<b>Project Title:</b> Llanelly House	<b>Photo Plate No's.</b> 1 and 2
<b>Date taken:</b> February 2011	
<b>Photographer:</b> CHRT	





*Plate 3. Llanelli Parish Church of St. Elli. Situated directly opposite Llanelly House. Looking northwest.*



*Plate 4. Llanelly House prior to restoration work in May 2011. Looking east along front north facing elevation*

**Project Title:** Llanelly House

**Date taken:** May 2011

**Photographer:** Richard Scott Jones

**Photo Plate No's.** 3 and 4





Plate 5. Llanelly House - Victorian shopfront in north facing elevation at west end. prior to restoration work. Looking southwest



Plate 6. Llanelly House - Victorian shopfront in north facing elevation at west end. prior to restoration work. Looking southwest. Note original 18th century pilaster at left of photo alongside scale. Marks original central entrance.

**Project Title:** Llanelly House

**Date taken:** May 2011

**Photographer:** Richard Scott Jones

**Photo Plate No's.** 5 and 6





*Plate 7. Llanelly House - Detail shot of Victorian shopfront in north facing elevation. Looking south.*



*Plate 8. Llanelly House - Detail shot of Victorian shopfront in north facing elevation. Looking south.*

**Project Title:** Llanelly House

**Date taken:** May 2011

**Photographer:** Richard Scott Jones

**Photo Plate No's.** 7 and 8



*Plate 9. Llanelly House - Detail shot of western pilaster in Victorian shopfront in north facing elevation. Looking south.*



*Plate 10. Llanelly House - Detail shot of eastern pilaster in Victorian shopfront in north facing elevation. Looking south.*

<b>Project Title:</b> Llanelly House	<b>Photo Plate No's.</b> 9 and 10
<b>Date taken:</b> May 2011	
<b>Photographer:</b> Richard Scott Jones	





*Plate 11. Llanelly House - View of first floor level in north facing elevation at west end. Looking south.*



*Plate 12. Llanelly House - View of first floor level in north facing elevation in central area. Looking south.*

**Project Title:** Llanelly House

**Date taken:** May 2011

**Photographer:** Richard Scott Jones

**Photo Plate No's.** 11 and 12





*Plate 13. Llanelly House - View of first floor level in north facing elevation in central area. Looking southeast.*



*Plate 14. Llanelly House - View of first floor level in north facing elevation at east end. Looking south.*

**Project Title:** Llanelly House

**Date taken:** May 2011

**Photographer:** Richard Scott Jones

**Photo Plate No's.** 13 and 14



*Plate 15. Llanelly House - Detail of cast iron and lead rain drainage pipe and hopper. on north facing elevation. Looking south.*



*Plate 16. Llanelly House - Oblique view of north and west facing elevations at ground level. Looking south.*

**Project Title:** Llanelly House

**Date taken:** May 2011

**Photographer:** Richard Scott Jones

**Photo Plate No's.** 15 and 16





*Plate 17. Llanelly House - Victorian Shopfront at ground level in West facing elevation. Looking northeast..*



*Plate 18. Llanelly House - Modern shopfronts in west facing elevation. Looking northeast.*

**Project Title:** Llanelly House

**Date taken:** May 2011

**Photographer:** Richard Scott Jones

**Photo Plate No's.** 17 and 18





Plate 19. Llanelly House - Victorian Shopfront at ground level in West facing elevation. Looking northeast..



Plate 20. Llanelly House - Detail in Victorian shopfront at ground level in west facing elevation. Looking east.

**Project Title:** Llanelly House

**Date taken:** May 2011

**Photographer:** Richard Scott Jones

**Photo Plate No's.** 19 and 20





*Plate 21. Llanelly House - View of 1st and 2nd floors in north and west facing elevations.*



*Plate 22. Llanelly House - North facing elevation. Looking eastwards.*

<b>Project Title:</b> Llanelly House	<b>Photo Plates No.</b>  21 and 22
<b>Date taken:</b> May 2011	
<b>Photographer:</b> Richard Scott Jones	



*Plate 23. Llanelly House - Detail of victorian shopfront entrance in west facing elevation. Looking east.*



*Plate 24. Llanelly House - Modern shopfronts at far southern end of west facing elevation.*

**Project Title:** Llanelly House

**Date taken:** May 2011

**Photographer:** Richard Scott Jones

**Photo Plates No.**

23 and 24





*Plate 25. Llanelly House - North facing elevation during erection of scaffolding and partial removal of external render. Looking south.*



*Plate 26. Llanelly House - North facing elevation during erection of scaffolding and partial removal of external render. Looking southwest.*

<b>Project Title:</b> Llanelly House	<b>Photo Plate No's.</b> 25 and 26
<b>Date taken:</b> July 2011	
<b>Photographer:</b> Richard Scott Jones	





*Plate 27. Llanelly House - North facing elevation during erection of scaffolding and partial removal of external render. Looking south.*



*Plate 28. Llanelly House - North facing elevation during erection of scaffolding and partial removal of external render. Third floor level. Looking southeast.*

**Project Title:** Llanelly House

**Date taken:** July 2011

**Photographer:** Richard Scott Jones

**Photo Plate No's.** 27 and 28





*Plate 29. Llanelly House - Ground floor eastern end of north facing elevation, in area of former Margrave Brothers Spirit & Wine Merchants. Following removal of external render. Looking southeast.*



*Plate 30. Llanelly House - Ground floor eastern end of north facing elevation, in area of former Margrave Brothers Spirit & Wine Merchants. Following removal of external render. Looking southwest toward position of former 18th century entrance.*

**Project Title:** Llanelly House

**Date taken:** July 2011

**Photographer:** Richard Scott Jones

**Photo Plate No's.** 29 and 30





Plate 31. Llanelly House - Detail shot showing position of former central doorway in ground floor north facing elevation. Looking south.



Plate 32. Llanelly House - Detail shot showing position of former central doorway in ground floor north facing elevation. and remains of former pilaster plinth. Looking southeast.

**Project Title:** Llanelly House

**Date taken:** July 2011

**Photographer:** Richard Scott Jones

**Photo Plate No's.** 31 and 32





*Plate 33. Llanelly House - Detail shot showing area of exposed stonework at eastern end in ground floor north facing elevation. Looking south.*



*Plate 34. Llanelly House - Oblique view looking westward toward position of victorian shopfront at west end, 1st level of scaffolding. Note oak bessemer beam. Looking southwest.*

**Project Title:** Llanelly House

**Date taken:** July 2011

**Photographer:** Richard Scott Jones

**Photo Plate No's.** 33 and 34





Plate 35. Llanelly House - Oblique view looking westward toward position of victorian shopfront at west end of front facade, 1st level of scaffolding. Note oak bessemer beam. Looking southwest.



Plate 36. Llanelly House - Oblique view looking eastward toward position of victorian shopfront at west end of front facade, 1st level of scaffolding. Note oak bessemer beam. Looking southeast

**Project Title:** Llanelly House

**Date taken:** July 2011

**Photographer:** Richard Scott Jones

**Photo Plate No's.** 35 and 36





*Plate 37. Llanelly House - Oblique view looking westward on second level of scaffolding against north facing elevation. Looking west.*



*Plate 38. Llanelly House - Oblique view looking westward on second level of scaffolding against north facing elevation. Looking east.*

**Project Title:** Llanelly House

**Date taken:** July 2011

**Photographer:** Richard Scott Jones

**Photo Plate No's.** 37 and 38





*Plate 39. Llanelly House - Oblique view looking westward on second level of scaffolding against north facing elevation. Looking east.*



*Plate 40. Llanelly House - Oblique view looking over ornate entablature westward at third floor level in north facing elevation. Looking west.*

**Project Title:** Llanelly House

**Date taken:** July 2011

**Photographer:** Richard Scott Jones

**Photo Plate No's.** 39 and 40





*Plate 41. Llanelly House - West looking view detailing the profile of one of the ornate entablatures in the north facing elevation.*



*Plate 42. Llanelly House - Detail shot showing ornate entablature in north facing elevation. Looking west.*

**Project Title:** Llanelly House

**Date taken:** July 2011

**Photographer:** Richard Scott Jones

**Photo Plate No's.** 41 and 42





Plate 43. Llanelly House - View of top of central entablature. Looking east.



Plate 44. Llanelly House - Shot showing ornate detail on central entablature. Looking west.

**Project Title:** Llanelly House

**Date taken:** July 2011

**Photographer:** Richard Scott Jones

**Photo Plate No's.** 43 and 44





Plate 45. Llanelly House - View of lead drain hopper from west facing elevation. Note Stepney coat of arms - three owl design on a fess chequy (archaic) or 'chequered band'.



Plate 46. Llanelly House - Enlarged view of Stepney coat of arms on lead hopper from west facing elevation.

**Project Title:** Llanelly House

**Date taken:** July 2011

**Photographer:** Richard Scott Jones

**Photo Plate No's.** 45 and 46





Plate 47. Llanelly House - Detail of side of lead hopper in west facing elevation. Snarling lion's head



Plate 48. Llanelly House - View of lead hopper on north facing elevation. Note lion symbol and 1714 date on front of hopper neck. Looking east

<b>Project Title:</b> Llanelly House	<b>Photo Plates No.</b>  47 and 48
<b>Date taken:</b> July 2011	
<b>Photographer:</b> Richard Scott Jones	



*Plate 49. Llanelly House - View of centrally placed lead hopper. Looking south.*



*Plate 50. Llanelly House - Enlarged view of area of 1714 date on lead hopper.*

**Project Title:** Llanelly House

**Date taken:** July 2011

**Photographer:** Richard Scott Jones

**Photo Plate No's.** 49 and 50





*Plate 51. Llanelly House - View of 1714 date on centrally placed lead hopper in north facing elevation.*



*Plate 52. Llanelly House - Oblique view of central lead rain hopper.*

**Project Title:** Llanelly House

**Date taken:** July 2011

**Photographer:** Richard Scott Jones

**Photo Plate No's.** 51 and 52





*Plate 53. Llanelly House - View of length of lead rainweater drain pipe with leaded motifs. From west facing elevation.*



*Plate 54. Llanelly House - Detail of lead drain pipe from west facing elevation. Shows lion motif and wild boar, the latter hard to discern from this photo.*

**Project Title:** Llanelly House

**Date taken:** July 2011

**Photographer:** Richard Scott Jones

**Photo Plate No's.** 53 and 54



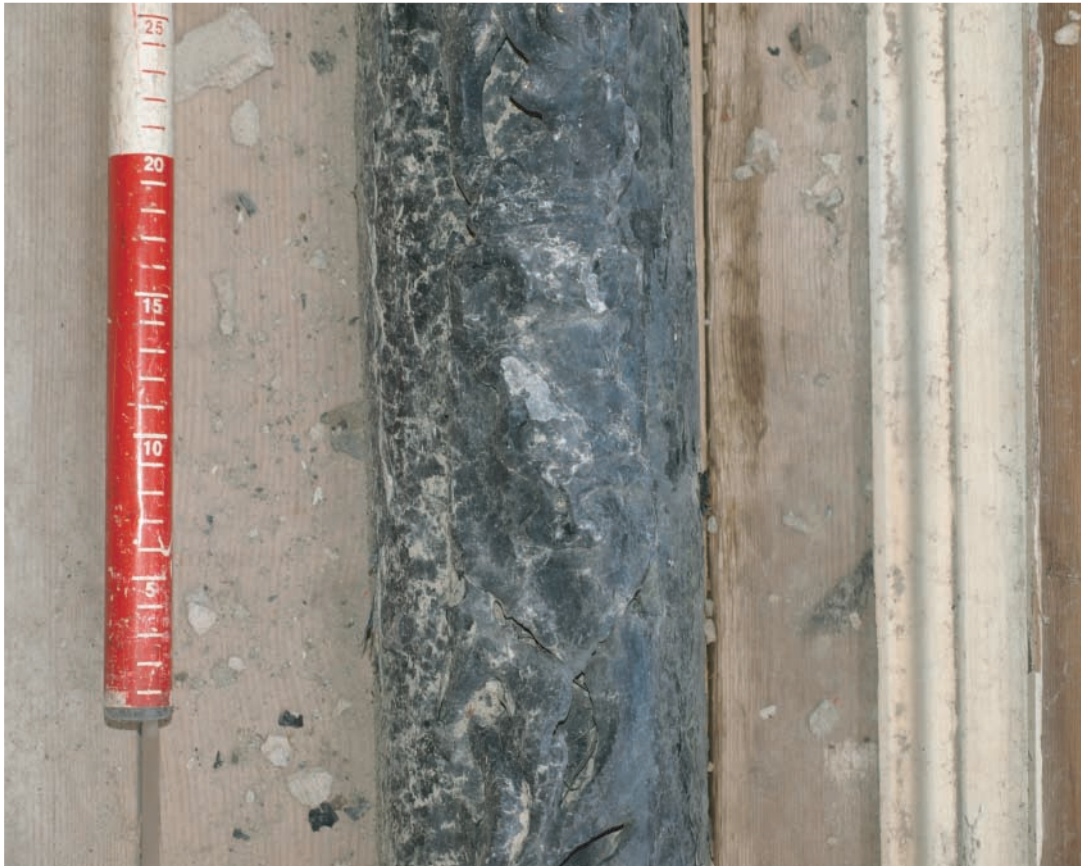


Plate 55. Llanelly House - Detail of lead drain pipe from west facing elevation. Shows filigree and other motifs, hard to discern from this photo.



Plate 56. Llanelly House - Detail of lead drain pipe from west facing elevation. Shows prancing lion motif and wild boar or bear motif either side at mounting areas.

**Project Title:** Llanelly House

**Date taken:** July 2011

**Photographer:** Richard Scott Jones

**Photo Plate No's.** 55 and 56





*Plate 57. Llanelly House - Oblique view at top level above third floor. Looking westwards.*



*Plate 58. Llanelly House - Oblique view at top level above third floor. Looking eastwards.*

**Project Title:** Llanelly House

**Date taken:** July and November 2011

**Photographer:** Richard Scott Jones

**Photo Plate No's.** 57 and 58





*Plate 59. Llanelly House - View of top of north facing elevation. Looking westwards.*



*Plate 60. Llanelly House - View of top of north facing elevation. Looking eastwards.*

**Project Title:** Llanelly House

**Date taken:** July 2011

**Photographer:** Richard Scott Jones

**Photo Plate No's.** 59 and 60





*Plate 61. Llanelly House - View of oak bessemer beam exposed behind former victorian shop front in west facing elevation.*



*Plate 62. Llanelly House - View of red brick repair and oak bessemer beam exposed behind former victorian shop front in west facing elevation. Red brickwork was used to repair/replace the former projecting chimney that was present in the west facing elevation in the 18th century.*

**Project Title:** Llanelly House

**Date taken:** July 2011

**Photographer:** Richard Scott Jones

**Photo Plate No's.** 61 and 62





*Plate 63. Llanelly House - View of oak bessemer beam exposed behind modern shopfront at far southern end of west facing elevation. Looking northwards.*



*Plate 64. Llanelly House - View of oak bessemer beam exposed following removal of victorian shop front and external render in west facing elevation. Looking northwards.*

**Project Title:** Llanelly House

**Date taken:** July 2011

**Photographer:** Richard Scott Jones

**Photo Plate No's.** 63 and 64





Plate 65. Llanelly House - View of first floor level in west facing elevation following removal of external render. Looking southwards.



Plate 66. Llanelly House - View of first floor level above former Victorian shop front in west facing elevation following removal of external render. Looking southwards. Note red brick repair in position of former projected chimney.

**Project Title:** Llanelly House

**Date taken:** July 2011

**Photographer:** Richard Scott Jones

**Photo Plate No's.** 65 and 66





Plate 67. Llanelly House - View of first floor level in west facing elevation following removal of external render. Looking southwards.



Plate 68. Llanelly House - View of first floor level above former victorian shop front in west facing elevation following removal of external render. Looking southwards. Note red brick repair in position of former projected chimney.

**Project Title:** Llanelly House

**Date taken:** July 2011

**Photographer:** Richard Scott Jones

**Photo Plate No's.** 67 and 68





Plate 69. Llanelly House - View of first floor level in west facing elevation following removal of external render. Shows butt joint between west range and west facing elevation, but only at this upper level, suggesting that the roof line has been raised at some time. Looking southwards.



Plate 70. Llanelly House - View of roof timbers in western range following removal of slate. Looking southwards.

**Project Title:** Llanelly House

**Date taken:** July 2011

**Photographer:** Richard Scott Jones

**Photo Plate No's.** 69 and 70





*Plate 71. Llanelly House - View of ground level south facing elevation in rear courtyard area. Note former blocked in window at east end. Looking north.*



*Plate 72. Llanelly House - Detail view of blocked in window feature at ground level in south facing elevation in rear courtyard area. Feature at right of photo, partly blocked in with red brick. Looking north.*

**Project Title:** Llanelly House

**Date taken:** July 2011

**Photographer:** Richard Scott Jones

**Photo Plate No's.** 71 and 72





*Plate 73. Llanelly House - View of south facing elevation in area above rear entrance, following removal of external render. Looking north.*



*Plate 74. Llanelly House - View of south facing elevation in area above rear entrance, following removal of external render. Looking northwest.*

**Project Title:** Llanelly House

**Date taken:** July 2011

**Photographer:** Richard Scott Jones

**Photo Plate No's.** 73 and 74





*Plate 75. Llanelly House - View of south facing elevation at first floor level. Looking north.*



*Plate 76. Llanelly House - Oblique view of south facing elevation at first floor level following removal of external render. Looking northwest.*

**Project Title:** Llanelly House

**Date taken:** July 2011

**Photographer:** Richard Scott Jones

**Photo Plate No's.** 75 and 76





*Plate 77. Llanelly House - Oblique view of south facing elevation at second floor level following removal of external render. Looking northeast.*



*Plate 78. Llanelly House - Oblique view of south facing elevation at second floor level following removal of external render. Looking northwest.*

**Project Title:** Llanelly House

**Date taken:** July 2011

**Photographer:** Richard Scott Jones

**Photo Plate No's.** 78 and 79





*Plate 79. Llanelly House - View of south facing elevation at second floor level following removal of external render. Looking north.*



*Plate 80. Llanelly House - Oblique view of south facing elevation at second floor level following removal of external render. Looking northeast*

**Project Title:** Llanelly House

**Date taken:** July 2011

**Photographer:** Richard Scott Jones

**Photo Plate No's.** 79 and 80





Plate 81. Llanelly House - View of south facing elevation between east and west range (tall window elevation), following removal of external render. Upper area. Looking north.



Plate 82. Llanelly House - View of south facing elevation between east and west range (Tall window elevation), following removal of external render. Central area. Looking north.

**Project Title:** Llanelly House

**Date taken:** July 2011

**Photographer:** Richard Scott Jones

**Photo Plate No's.** 81 and 82





*Plate 83. Llanelly House - Montage of photos showing part of the south facing elevation between the east and west ranges, the area of the tall window in the Stair Hall. Looking north.*

**Project Title:** Llanelly House

**Date taken:** July 2011

**Photographer:** Richard Scott Jones

**Photo Plate No's.** 83





*Plate 84. Llanelly House - View of east facing elevation at the second floor level. Looking northwards.*



*Plate 85. Llanelly House - View of former victorian balcony door in second floor east facing elevation. Looking westward.*

**Project Title:** Llanelly House

**Date taken:** July 2011

**Photographer:** Richard Scott Jones

**Photo Plate No's.** 84 and 85





*Plate 86. Llanelly House - Oblique view of east facing external elevation at ground level of eastern range. Looking southwest. Note series of blocked in openings in red brick.*



*Plate 87. Llanelly House - Oblique view of external east facing elevation at ground level of eastern range. Looking northwest. Note series of blocked in openings in red brick.*

**Project Title:** Llanelly House

**Date taken:** July 2011

**Photographer:** Richard Scott Jones

**Photo Plate No's.** 86 and 87





*Plate 88. Llanelly House - Oblique view of east facing external elevation at upper level of eastern range. Looking southwest.*



*Plate 89. Llanelly House - Oblique view of east facing external elevation at dormer window level of eastern range. Looking southwest.*

**Project Title:** Llanelly House

**Date taken:** July 2011

**Photographer:** Richard Scott Jones

**Photo Plate No's.** 88 and 89





*Plate 90. Llanelly House - Oblique view of east facing elevation at central upper level above former courtyard of western range. Note blocked in opening in centre of photo, suggestive of a former window opening, likely 18th century. Looking southwest.*



*Plate 91. Llanelly House - Oblique view of east facing elevation at uppermost level above former courtyard of western range. Shows remains of former 18th century timber window lintel. Looking southwest.*

**Project Title:** Llanelly House

**Date taken:** July 2011

**Photographer:** Richard Scott Jones

**Photo Plate No's.** 90 and 91





*Plate 92. Llanelly House - View of east facing elevation at uppermost level above former courtyard alongside western range. Shows the remains of an oak timber lintel, likely a former 18th century window opening, also visible as being blocked in. Looking west.*



*Plate 93. Llanelly House - Roof area in process of repair following removal of slates and irreparable timbers. Looking northwest from southeastern corner of roof.*

**Project Title:** Llanelly House

**Date taken:** September 2011

**Photographer:** Richard Scott Jones

**Photo Plate No's.** 92 and 93





*Plate 94. Llanelly House - Roof area in process of repair following removal of slates and irreparable timbers. Looking northwest from southeastern corner of roof.*



*Plate 95. Llanelly House - Roof area in process of repair following removal of slates and irreparable timbers. Looking north from southeastern corner of roof.*

**Project Title:** Llanelly House

**Date taken:** September 2011

**Photographer:** Richard Scott Jones

**Photo Plate No's.** 94 and 95





*Plate 96. Llanelly House - Roof area in process of repair following removal of slates and rotten timbers. Looking west.*



*Plate 97. Llanelly House - Roof area in process of repair following removal of slates and rotten timbers. Looking north.*

**Project Title:** Llanelly House

**Date taken:** September 2011

**Photographer:** Richard Scott Jones

**Photo Plate No's.** 96 and 97





*Plate 98. Llanelly House - Roof of eastern range following removal of slates, floor and floor joists. Looking southwest.*



*Plate 99. Llanelly House - Roof of western range following removal of slates. Looking northwards.*

**Project Title:** Llanelly House

**Date taken:** September 2011

**Photographer:** Richard Scott Jones

**Photo Plate No's.** 98 and 99





*Plate 100. Llanelly House - Roof of western range following removal of slates. Looking northwards.*



*Plate 101. Llanelly House - Roof of western range following removal of slates. Looking northwards.*

**Project Title:** Llanelly House

**Date taken:** October 2011

**Photographer:** Richard Scott Jones

**Photo Plate No's.** 100 and 101





Plate 102. Llanelly House - View of house with scaffolding completed over front and roof. Looking westward with Credit Union building in foreground, formerly part of Llanelly House in the 17th century.



Plate 103. Llanelly House -View of house with scaffolding completed over front and roof. Looking south from Llanelly Parish Church.

**Project Title:** Llanelly House

**Date taken:** November 2011

**Photographer:** Richard Scott Jones

**Photo Plate No's.** 102 and 103





Plate 104. Composite photograph of north facing elevation of supposed Great Hall (Room G1), following removal of wall plaster from former contract work in 2003/03.

Project Title:	Llanelly House	Photo Plate No. 104  The Great Hall (Room G1)
Date taken:	March 2011	
Photographer:	Richard Scott Jones	





Plate 105. Composite photograph of south facing elevation of supposed former 'Great Hall' (Room G1), following removal of wall plaster from former contract work in 2003/03. Note victorian shopfront and original 18th century front door having been reused and reinserted in a new position from its original central position at the right of the photo, in the position of the new window opening. All of the visible standing fabric is 19th century in date in this elevation.

Project Title:	Llanelly House	Photo Plate No. 105  The Great Hall (Room G1) - South facing internal elevation
Date taken:	March 2011	
Photographer:	Richard Scott Jones	





Plate 106. Llanelly House - The Great Hall (Room G1). West facing elevation, prior to unblocking of former 18th century doorway in position of 19th century fireplace.



Plate 107. Llanelly House - The Great Hall (Room G1). East facing elevation, prior to removal of victorian shopfront.

**Project Title:** Llanelly House

**Date taken:** March 2011

**Photographer:** Richard Scott Jones

**Photo Plate No's.** 106 and 107





*Plate 108. Llanelly House - The Great Hall (Room G1). The state of the former trial trench in context with Room G1, excavated in 2003/2004 season, seemingly used for dumping building materials. Looking northeast.*



*Plate 109. Llanelly House - The Great Hall (Room G1). The state of the former trial trench excavated in 2003/2004 season, seemingly used for dumping materials. Looking north.*

**Project Title:** Llanelly House

**Date taken:** February 2011

**Photographer:** Richard Scott Jones

**Photo Plate No's.** 108 and 109





Plate 110. Llanelly House - The Great Hall (Room G1). Former trial trench dug in 2002 season now cleared of dumping material. Looking north.



Plate 111. Llanelly House - The Great Hall (Room G1). West facing section of trial trench. Note depth of overburden (demolition material), approx. 0.50m - 0.70m in depth.

**Project Title:** Llanelly House

**Date taken:** February 2011

**Photographer:** Richard Scott Jones

**Photo Plate No's.** 110 and 111





Plate 112. Llanelly House - The Great Hall (Room G1). Slight overhead view of trial trench looking north. Note position of former 17th century opening, blocked in at left of trench in north facing elevation



Plate 113. Llanelly House - The Great Hall (Room G1). East facing section of trial trench. Note depth of overburden (demolition material), approx. 0.50m - 0.70m in depth.

**Project Title:** Llanelly House

**Date taken:** February 2011

**Photographer:** Richard Scott Jones

**Photo Plate No's.** 112 and 113





Plate 114. Llanelly House - The Great Hall (Room G1). View of eastern end of north facing elevation following removal of floorboards and demolition material. Looking north.



Plate 115. Llanelly House - The Great Hall (Room G1). View of lower section of eastern end of north facing elevation following removal of floorboards and demolition material. Note 16th - 17th century cobbles in foreground and mark in fabric, where the former 18th century front door would have been positioned. Unfortunately very little of this early feature is clearly visible due to its destruction in the 19th century following the creation of the Victorian shopfront. Looking north.

**Project Title:** Llanelly House

**Date taken:** June 2011

**Photographer:** Richard Scott Jones

**Photo Plate No's.** 114 and 115





Plate 116. Llanelly House - The Great Hall (Room G1) - View of exposed 16th - 17th century cobbled floor, following removal of overburden (demolition material). Note framed pictorial cobble work in foreground. Looking north.



Plate 117. Llanelly House - The Great Hall (Room G1) - View of exposed 16th - 17th century cobbled floor, following removal of overburden (demolition material). Note framed pictorial cobble work at far end. Looking south.

<b>Project Title:</b>	Llanelly House	<b>Photo Plate No's.</b>  116 and 117
<b>Date taken:</b>	June 2011	
<b>Photographer:</b>	Richard Scott Jones	





Plate 118. Llanelly House - The Great Hall (Room G1) - View of exposed 16th - 17th century cobbled floor, following removal of overburden (demolition material). Detailed shot of area of framed pictorial cobbled area. Looking south.



Plate 119. Llanelly House - The Great Hall (Room G1) - Detail shot of exposed 16th - 17th century cobbled floor.

<b>Project Title:</b> Llanelly House	<b>Photo Plate No's.</b>  118 and 119
<b>Date taken:</b> June 2011	
<b>Photographer:</b> Richard Scott Jones	



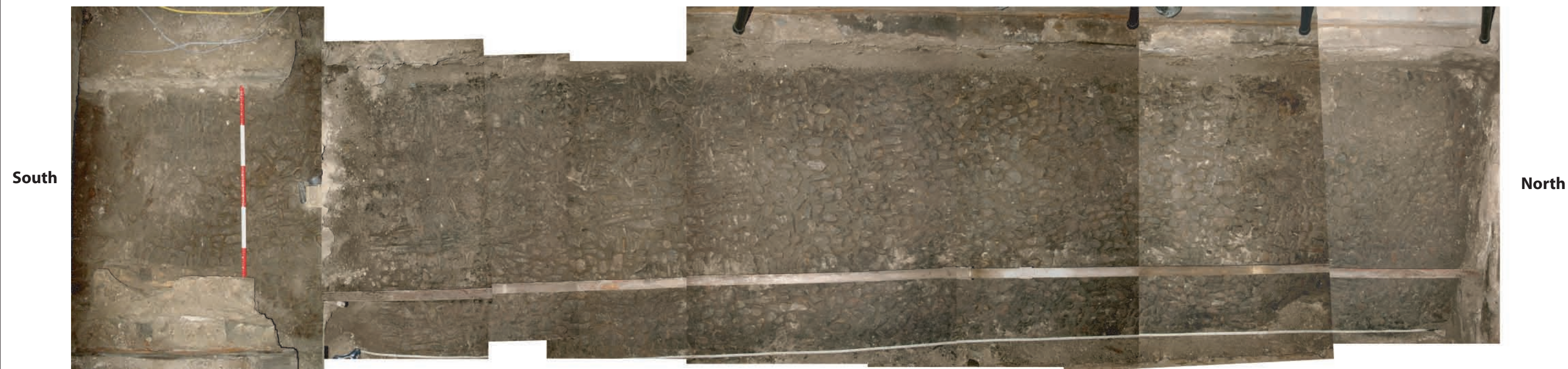


Plate 120. Composite photograph of 16th - 17th century cobbled floor in Room G1. Note rectangular framed cobble picture at southern end, possibly representing two prancing horses.

<b>Project Title:</b> Llanelly House	<b>Photo Plate No.</b> 120  The Great Hall (Room G1) - Cobbled floor (passageway)
<b>Date taken:</b> June 2011	
<b>Photographer:</b> Richard Scott Jones	





Plate 121. Llanelly House - The Great Hall (Room G1). View of area of exposed cobbled floor with original floor joists put back in place. Looking north.



Plate 122. Llanelly House - The Great Hall (Room G1). Oblique view of area of exposed cobble floor with original floor joists put back in place. Looking eastwards. Also note 19th century fireplace and block in removed from former 18th century doorway.

**Project Title:** Llanelly House

**Date taken:** June 2011

**Photographer:** Richard Scott Jones

**Photo Plate No's.** 121 and 122





Plate 123. Llanelly House - The Great Hall (Room G1). Shot showing small evaluation trench at base of former victorian shopfront in west wall. Trench inserted in order to ascertain existence, character and extent of former 18th century fireplace. Looking southwest.



Plate 124 Llanelly House - The Great Hall (Room G1). Shot showing small evaluation trench at base of former victorian shopfront in west wall. Trench inserted in order to ascertain existence, character and extent of former 18th century fireplace. Looking northwards..

**Project Title:** Llanelly House

**Date taken:** June 2011

**Photographer:** Richard Scott Jones

**Photo Plate No's.** 123 and 124





Plate 125. Llanelly House - The Great Hall (Room G1). Overhead view of evaluation trench at base of west wall following removal of victorian shopfront and concrete floor. Note remains of 18th century plaster outline marking extent of former fireplace opening. Photo taken from the northern side of the 19th century cast iron timber beam supports.



Plate 126 Llanelly House - The Great Hall (Room G1). Overhead view of evaluation trench at base of west wall following removal of victorian shopfront and concrete floor. Note remains of 18th century plaster outline marking extent of former fireplace opening. Photo taken from the southern side of the 19th century cast iron timber beam supports.

**Project Title:** Llanelly House

**Date taken:** July 2011

**Photographer:** Richard Scott Jones

**Photo Plate No's.** 125 and 126





Plate 127. Llanelly House - The Great Hall (Room G1). Working shot during construction of new north and west facing walls following removal of victorian shopfronts and consolidation of timber bessemer beams. Looking northwest.



Plate 128. Llanelly House - The Great Hall (Room G1). Working shot during construction of new north and west facing walls following removal of victorian shopfronts and consolidation of timber bessemer beams. Looking north.

**Project Title:** Llanelly House

**Date taken:** November 2011

**Photographer:** Richard Scott Jones

**Photo Plate No's.** 127 and 128





Plate 129. Llanelly House - The Great Hall (Room G1). Working shot during removal of modern concrete floor and ground reduction. Looking southeast.



Plate 128. Llanelly House - The Great Hall (Room G1). Working shot during removal of modern concrete floor and ground reduction. Looking southeast.

**Project Title:** Llanelly House

**Date taken:** November 2011

**Photographer:** Richard Scott Jones

**Photo Plate No's.** 129 and 130





Plate 131. Llanelly House - The Great Hall (Room G1). View showing position of former lower doorway openings in south wall at west end and in west wall at southern end. Delineated by slate shutters? Looking southwest.



Plate 132. Llanelly House - The Great Hall (Room G1). Detail shot of former 17th century lower doorway opening in south wall. Looking south

**Project Title:** Llanelly House

**Date taken:** November 2011

**Photographer:** Richard Scott Jones

**Photo Plate No's.** 131 and 132





*Plate 133. Llanelly House - The Great Hall (Room G1). Detail shot of former 17th century lower doorway opening in west wall, now replaced by the newly constructed reproduction 18th century window opening. Looking west.*



*Plate 134. Llanelly House - The Great Hall (Room G1). View of remains of 18th century hearth foundation in front of newly constructed fireplace opening, built on the footprint of the 18th century fireplace remains. Looking northwest.*

**Project Title:** Llanelly House

**Date taken:** November 2011

**Photographer:** Richard Scott Jones

**Photo Plate No's.** 133 and 134





*Plate 135. Llanelly House - The Great Hall (Room G1). View of remains of 18th century hearth foundation in front of newly constructed fireplace opening, built on the footprint of the 18th century fireplace opening. Looking west.*



*Plate 136. Llanelly House - The Great Hall (Room G1). Shot showing depth of overburden. Overburden cleared down to former compacted earth 17th century floor level. Looking northwest.*

**Project Title:** Llanelly House

**Date taken:** November 2011

**Photographer:** Richard Scott Jones

**Photo Plate No's.** 135 and 136





Plate 137. Llanelly House - The Great Hall (Room G1). View of former 17th century compacted earth floor ,following partial removal of overburden Looking north west.



Plate 138. Llanelly House - The Great Hall (Room G1). Shot of remains of 17th century hearth once the 18th century hearth foundation was removed. Looking west.

**Project Title:** Llanelly House

**Date taken:** November 2011

**Photographer:** Richard Scott Jones

**Photo Plate No's.** 137 and 138





*Plate 139. Llanelly House - The Great Hall (Room G1). Overhead view of remains of 17th century hearth once the 18th century hearth foundation was removed. Note remains of flagstones. Looking west.*



*Plate 140. Llanelly House - The Great Hall (Room G1). Detail shot showing the lime plaster stump remains of the 17th century fireplace surround on the northern side. Looking west.*

**Project Title:** Llanelly House

**Date taken:** November 2011

**Photographer:** Richard Scott Jones

**Photo Plate No's.** 139 and 140





Plate 141. Llanelly House - The Great Hall (Room G1). Shot showing east facing elevation of former 17th century hearth opening. Looking west.

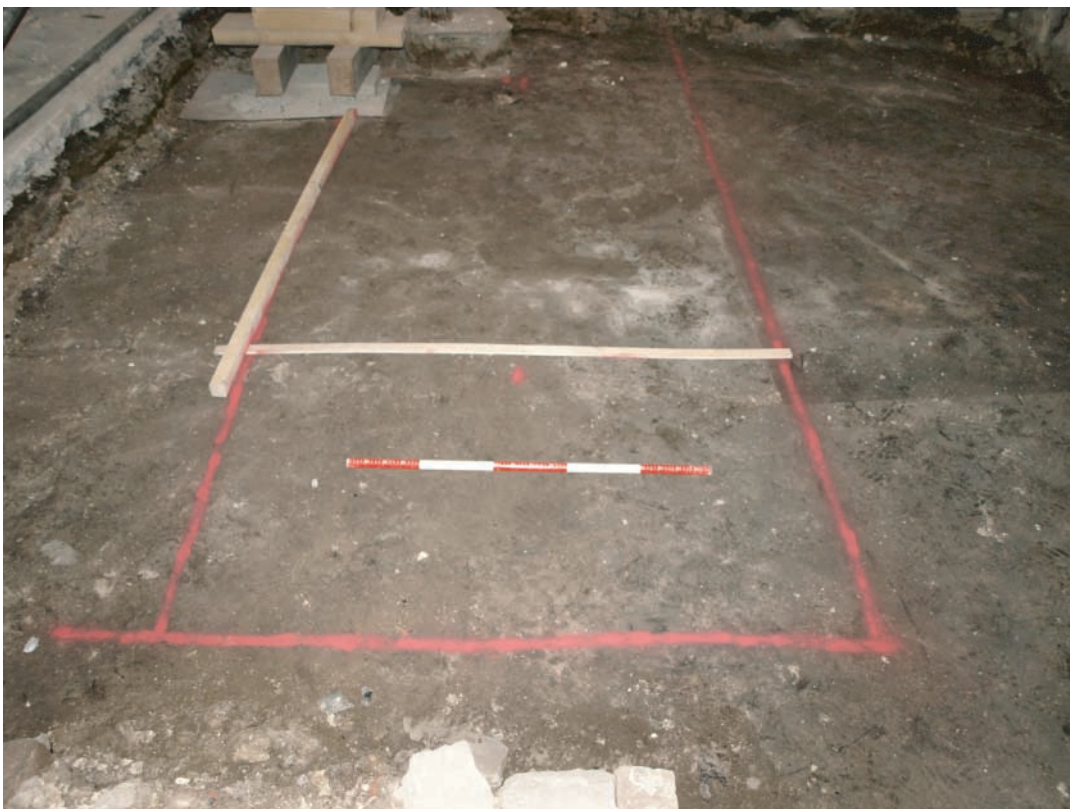


Plate 142. Llanelly House - The Great Hall (Room G1). Marked outline of proposed trench for concrete support base in centre of Room G1. Looking east.

**Project Title:** Llanelly House

**Date taken:** November 2011

**Photographer:** Richard Scott Jones

**Photo Plate No's.** 141 and 142





*Plate 143. Llanelly House - The Great Hall (Room G1). Small investigative trench inserted into southwestern corner of proposed concrete base trench. Looking southwest.*



*Plate 144. Llanelly House - The Great Hall (Room G1). Overhead view of investigation trench and small investigation slot. Note round posthole through natural clay. Survey pole sits on medieval compacted earth floor.*

**Project Title:** Llanelly House

**Date taken:** November 2011

**Photographer:** Richard Scott Jones

**Photo Plate No's.** 143 and 144





Plate 145. Llanelly House - The Great Hall (Room G1). East facing section of concrete base trench show character and depth of deposits between the 17th century floor level (position of scale) and the late medieval floor level.



Plate 146. Llanelly House - The Great Hall (Room G1). West facing section of concrete base trench showing character and depth of deposits between the 18th century floor level (timber floor joist), the 17th century floor level and the late medieval floor level. Looking east.

**Project Title:** Llanelly House

**Date taken:** November 2011

**Photographer:** Richard Scott Jones

**Photo Plate No's.** 145 and 146





*Plate 147. Llanelly House - The Great Hall (Room G1). View of late medieval compacted earth and clay floor at base of proposed concrete base trench. Looking east.*



*Plate 148. Llanelly House - The Great Hall (Room G1). Detail shot of burnt area of compacted earth and clay late medieval floor at base of proposed concrete base trench. Looking east.*

**Project Title:** Llanelly House

**Date taken:** November 2011

**Photographer:** Richard Scott Jones

**Photo Plate No's.** 147 and 148





*Plate 149. Llanelly House - The Great Hall (Room G1). Working shot during removal of remaining concrete floor against north wall. Looking northwest.*



*Plate 150. Llanelly House - The Great Hall (Room G1). South facing elevation following complete removal of modern concrete floor and 18th - 19th century overburden. Note remains of former 17th century wall plaster and position of former blocked in 17th century window opening at left of photo.*

**Project Title:** Llanelly House

**Date taken:** November 2011

**Photographer:** Richard Scott Jones

**Photo Plate No's.** 149 and 150





*Plate 151. Llanelly House - The Great Hall (Room G1). South facing elevation following complete removal of modern concrete floor and 18th - 19th century overburden. Note remains of former 17th century wall plaster and position of former blocked in 17th century opening at base of newly constructed wall.*



*Plate 152. Llanelly House - The Great Hall (Room G1). View of excavated proposed concrete base trench and other new floor support trenches. Looking east.*

**Project Title:** Llanelly House

**Date taken:** December 2011

**Photographer:** Richard Scott Jones

**Photo Plate No's.** 151 and 152





Plate 153 Llanelly House - The Great Hall (Room G1). View of completed excavation work. Looking southwest.



Plate 154. Llanelly House - The Great Hall (Room G1). View of completed excavation work. Looking northwest

**Project Title:** Llanelly House

**Date taken:** December 2011

**Photographer:** Richard Scott Jones

**Photo Plate No's.** 153 and 154





Plate 155. Llanelly House - The Great Hall (Room G1) - West facing former 18th century central doorway elevation revealed following removal of victorian rebuild.



Plate 156. Llanelly House - The Great Hall (Room G1) - West facing former 18th century central doorway elevation revealed following removal of victorian rebuild.

<b>Project Title:</b> Llanelly House	<b>Photo Plate No's.</b>  155 and 156
<b>Date taken:</b> November 2011	
<b>Photographer:</b> Richard Scott Jones	





Plate 157. Llanelly House - Sir Thomas Stepney's Study (Room G2). West facing elevation as viewed in March 2011.



Plate 158. Llanelly House - Sir Thomas Stepney's Study (Room G2). East facing elevation as viewed in March 2011.

**Project Title:** Llanelly House

**Date taken:** March 2011

**Photographer:** Richard Scott Jones

**Photo Plate No's.** 157 and 158





*Plate 159. Llanelly House - Sir Thomas Stepney's Study (Room G2). East facing elevation as recorded in May 2011. Looking southwest.*



*Plate 160. Llanelly House - Sir Thomas Stepney's Study (Room G2). Remains of fireplace opening in east facing elevation as recorded in May 2011.*

**Project Title:** Llanelly House

**Date taken:** May 2011

**Photographer:** Richard Scott Jones

**Photo Plate No's.** 159 and 160





Plate 161. Llanelly House - Sir Thomas Stepney's Study (Room G2). South facing elevation as recorded in May 2011. Looking southwest.



Plate 162. Llanelly House - Sir Thomas Stepney's Study (Room G2). Remains of wallpaper on southern side of east facing elevation. Looking towards ceiling.

**Project Title:** Llanelly House

**Date taken:** May 2011

**Photographer:** Richard Scott Jones

**Photo Plate No's.** 161 and 162





Plate 163. Llanelly House - Sir Thomas Stepney's Study (Room G2) - Detail of 'Tiger print' wallpaper fragment on east facing elevation in former store room.



Plate 164. Llanelly House - Sir Thomas Stepney's Study (Room G2) - View of sash runners hidden within wooden partition that encloses the small storage space in Room G2. Likely associated with a former sliding door that screened the hidden storage space beneath the floor of Sir Thomas Stepney's study

<b>Project Title:</b> Llanelly House	<b>Photo Plate No's.</b>  163 and 164
<b>Date taken:</b> May 2011	
<b>Photographer:</b> Richard Scott Jones	





Plate 165. Llanelly House - Sir Thomas Stepney's Study (Room G2) -Remains of former 19th century wine and spirit bottle label cupboard hidden behind wooden panelling in west facing elevation beside fireplace.



Plate 166. Llanelly House - Sir Thomas Stepney's Study (Room G2) - Hinged door of former 19th century wine and spirit bottle label cupboard hidden behind wooden panelling in west facing elevation beside fireplace.

<b>Project Title:</b>	Llanelly House	<b>Photo Plate No's.</b>  165 and 166
<b>Date taken:</b>	May 2011	
<b>Photographer:</b>	Richard Scott Jones	





Plate 167. Llanelly House - Sir Thomas Stepney's Study (Room G2) - Detail shot showing remains of former 19th century wine and spirit bottle label cupboard hidden behind wooden panelling in west facing elevation beside fireplace.



Plate 168. Llanelly House - Sir Thomas Stepney's Study (Room G2) - Detail shot showing remains of former 19th century wine and spirit bottle label cupboard hidden behind wooden panelling in west facing elevation beside fireplace.

**Project Title:** Llanelly House

**Date taken:** May 2011

**Photographer:** Richard Scott Jones

**Photo Plate No's.**

167 and 168





*Plate 169. Llanelly House - Sir Thomas Stepney's Study (Room G2) - Spirit & Wine bottle label cupboard cleaned out of 19th century material following investigation and recording, revealing 18th century wallpapered cupboard. Looking east.*



*Plate 170. Llanelly House - Sir Thomas Stepney's Study (Room G2) - Spirit & Wine bottle label cupboard cleaned out of 19th century material following investigation and recording, revealing 18th century wallpapered cupboard. Looking north east.*

<b>Project Title:</b> Llanelly House	<b>Photo Plate No's.</b>  169 and 170
<b>Date taken:</b> October 2012	
<b>Photographer:</b> Richard Scott Jones	





Plate 171. Llanelly House - Sir Thomas Stepney's Study (Room G2). Detail shot of handpainted wallpaper at back of cupboard following cleaning and recording work.



Plate 172. Llanelly House - Sir Thomas Stepney's Study (Room G2). Detail shot of handpainted wallpaper at back of cupboard following cleaning and recording work.

**Project Title:** Llanelly House

**Date taken:** October 2012

**Photographer:** Richard Scott Jones

**Photo Plate No's.** 171 and 172





Plate 173. Llanelly House - Sir Thomas Stepney's Study (Room G2). Overhead view of timber floor joists following removal of floorboards and part clearance of overburden in hidden low basement store room.

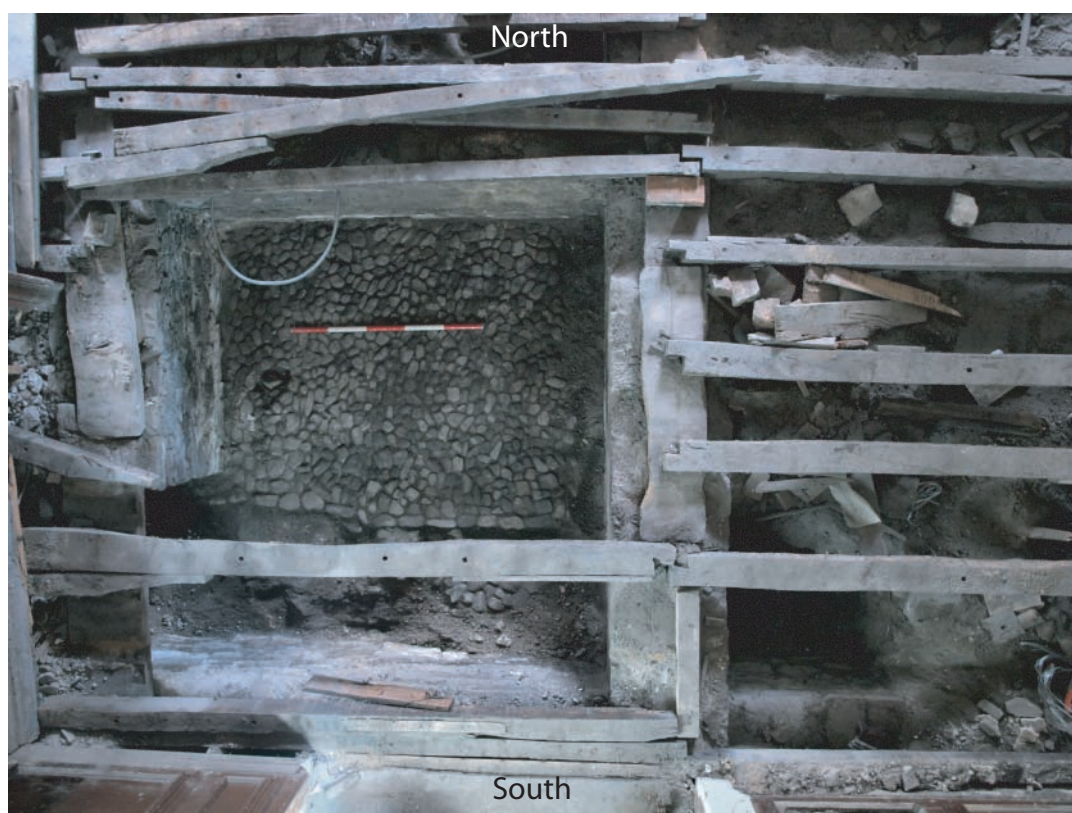


Plate 174. Llanelly House - Sir Thomas Stepney's Study (Room G2). Overhead view showing 'secret' or hidden basement room beneath floorboards. Photo taken through floorboard gap in upper floor. Southern end is at bottom of photo.

**Project Title:** Llanelly House

**Date taken:** May 2011

**Photographer:** Richard Scott Jones

**Photo Plate No's.** 173 and 174





*Plate 175. Llanelly House - Sir Thomas Stepney's Study (Room G2). Oblique view of exposed low basement room in Room G2. Looking west.*



*Plate 176. Llanelly House - Sir Thomas Stepney's Study (Room G2). Oblique view of exposed low basement room in Room G2. Looking southwest.*

**Project Title:** Llanelly House

**Date taken:** May 2011

**Photographer:** Richard Scott Jones

**Photo Plate No's.** 175 and 176





Plate 177. Llanelly House - Sir Thomas Stepney's Study (Room G2). Oblique view of exposed cobbled floor in central part of room. Looking northwest.



Plate 178. Llanelly House - Sir Thomas Stepney's Study (Room G2). Overhead view of exposed cobbled floor in central part of Room G2.

**Project Title:** Llanelly House

**Date taken:** May 2011

**Photographer:** Richard Scott Jones

**Photo Plate No's.** 177 and 178





*Plate 179. Llanelly House - Sir Thomas Stepney's Study (Room G2). Base of south facing elevation following removal of overburden beneath floorboards and exposing of medieval cobbled floor. Looking north.*



*Plate 180. Llanelly House - Sir Thomas Stepney's Study (Room G2). View of base of north facing elevation in hidden basement room, showing position of former 17th century floor joist supporting ledge. Looking southeast.*

**Project Title:** Llanelly House

**Date taken:** November 2011

**Photographer:** Richard Scott Jones

**Photo Plate No's.** 179 and 180





*Plate 181. Llanelly House - Sir Thomas Stepney's Study (Room G2). View of base of north facing elevation in hidden basement room, showing position of former 17th century floor joist supporting ledge. Looking south.*



*Plate 182. Llanelly House - Sir Thomas Stepney's Study (Room G2). East facing elevation following unblocking of 18th century doorway adjoining the Great Hall.*

**Project Title:** Llanelly House

**Date taken:** November 2011

**Photographer:** Richard Scott Jones

**Photo Plate No's.** 181 and 182





Plate 183. Llanelly House - Sir Thomas Stepney's Study (Room G2). View of exposed timber floor joists along passage at west end of Room G2 that allows access to Service Hall. Looking south



Plate 184. Llanelly House - Sir Thomas Stepney's Study (Room G2). Depth and character of overburden deposits blocking former access opening into low basement room in Room G2. Looking west from low basement at position of access opening.

**Project Title:** Llanelly House

**Date taken:** May 2011

**Photographer:** Richard Scott Jones

**Photo Plate No's.** 183 and 184





*Plate 185. Llanelly House - Sir Thomas Stepney's Study (Room G2). View of partial clearance of overburden at east side of Room G2. Looking southwards.*



*Plate 186. Llanelly House - Sir Thomas Stepney's Study (Room G2). View of partial clearance of overburden at east side of Room G2. Looking north.*

**Project Title:** Llanelly House

**Date taken:** May 2011

**Photographer:** Richard Scott Jones

**Photo Plate No's.** 185 and 186





*Plate 187. Llanelly House - Sir Thomas Stepney's Study (Room G2). View of timber constructed 'coin trap' positioned beneath safe at northeastern corner of room. Looking northeast.*



*Plate 188. Llanelly House - Sir Thomas Stepney's Study (Room G2). View along floor support trench at east side of room. Trench cut through 18th century overburden onto natural clay floor. Looking south.*

**Project Title:** Llanelly House

**Date taken:** May 2011

**Photographer:** Richard Scott Jones

**Photo Plate No's.** 187 and 188





*Plate 189. Llanelly House - Sir Thomas Stepney's Study (Room G2). Investigative slot cut through floor at far southern end at east side of room. Shows remains of post-hole, probably associated with 17th or 18th century scaffolding. Looking northeast.*



*Plate 190. Llanelly House - Sir Thomas Stepney's Study (Room G2). Overhead view of investigative slot cut through floor at far southern end at east side of room. Shows remains of post-hole, probably associated with 17th or 18th century scaffolding. Note possible remains of medieval stone track at left of post-hole.*

**Project Title:** Llanelly House

**Date taken:** May 2011

**Photographer:** Richard Scott Jones

**Photo Plate No's.** 189 and 190





*Plate 191. Llanelly House - Sir Thomas Stepney's Study (Room G2) - View of exposed stone steps that gave access to a low basement cobbled area in Room G2. Looking northwards from top of steps by Service Hall.*



*Plate 192. Llanelly House - Sir Thomas Stepney's Study (Room G2) - View of exposed cobbled floor and stone steps in former 17th - 18th century low basement area. Looking south.*

<b>Project Title:</b> Llanelly House	<b>Photo Plate No's.</b>  191 and 192
<b>Date taken:</b> May 2011	
<b>Photographer:</b> Richard Scott Jones	





*Plate 193. Llanelly House - Sir Thomas Stepney's Study (Room G2). View of opening that gave access to 'secret' low basement room in Room G2. Looking southwards from cobbled floor.*



*Plate 194. Llanelly House - Sir Thomas Stepney's Study (Room G2). Detail of stone steps that gave access to low basement area in Room G2. Looking south.*

**Project Title:** Llanelly House

**Date taken:** May 2011

**Photographer:** Richard Scott Jones

**Photo Plate No's.** 193 and 194





*Plate 195a. View of Room G3 (Common or Service Hall). Looking northeast.*



*Plate 195b. View of Room G3 (Common or Service Hall). Looking southeast.*

<b>Project Title:</b> Llanelly House	<b>Photo Plate No's.</b>  195a and 195b
<b>Date taken:</b> 26th March 2013	
<b>Photographer:</b> Richard Scott Jones	





*Plate 196. View of Room G3 (Service Corridor). Looking east. Access steps to cellar in the floor in foreground.*



*Plate 197. View of Room G3 (Service Corridor). Looking south. Doorway into Room G8 (Kitchen) to right of photo.*

**Project Title:** Llanelly House  
**Date taken:** 26th March 2013  
**Photographer:** Richard Scott Jones

**Photo Plate No's.**

196 and 197





*Plate 198. Interior of late Victorian red brick cellar. Looking east toward access steps from Room G3.*



*Plate 199. Interior of late Victorian red brick cellar. Looking west toward back wall with Bay 5 on right.*

**Project Title:** Llanelly House

**Date taken:** 26th March 2013

**Photographer:** Richard Scott Jones

**Photo Plates No.** 198 and 199





Plate 200. View of Bay 5 (area opposite proposed lift shaft). Looking northwest.



Plate 201. View of Bay 6 (area of proposed lift shaft). Looking southwest

**Project Title:** Llanelly House

**Date taken:** 26th March 2013

**Photographer:** Richard Scott Jones

**Photo Plates No's.** 200 and 201





*Plate 202. View of northern range of vaulted bays. Looking west.*



*Plate 203. View of Bay No. 3. Looking south.*

**Project Title:** Llanelly House

**Date taken:** 26th March 2013

**Photographer:** Richard Scott Jones

**Photo Plates No's.** 202 and 203





Plate 204. Front view of Bay No's 5 and 4. Looking north. Note chalk marks on front edge of each bay.



Plate 205. Detail showing chalk marks on Bay No. 5. "TINTARA" wine.

**Project Title:** Llanelly House

**Date taken:** 26th March 2013

**Photographer:** Richard Scott Jones

**Photo Plates No's.** 204 and 205





*Plate 206. Detail of chalk writing on east facing side wall of Bay No. 9 (marked as '18'). "HARVEST BURGUNDY". Looking southwest.*



*Plate 207. Detail showing chalk markings on east facing side wall of Bay No.3 (originally marked as No. 6). Looking northwest.*

**Project Title:** Llanelly House

**Date taken:** November 2011

**Photographer:** Richard Scott Jones

**Photo Plates No's.** 206 and 207





*Plate 208. Detail of victorian gas-light fitting. Looking southwest alongside Bay No. 8.*



*Plate 209. Closer view of gas-fitting showing scrolling detail on pipework.*

**Project Title:** Llanelly House

**Date taken:** November 2011

**Photographer:** Richard Scott Jones

**Photo Plates No's.** 208 and 209





*Plate 210. General view of cellar looking toward access steps at east end.*



*Plate 211. View of cellar access steps leading to Room G3. Looking east.*

**Project Title:** Llanelly House

**Date taken:** November 2011

**Photographer:** Richard Scott Jones

**Photo Plates No's.** 210 and 211





*Plate 212. Detail of octagonal cut flagstones at east end of cellar floor.*



*Plate 213. Access point through floor of Room G3 leading to cellar. Looking west.*

**Project Title:** Llanelly House

**Date taken:** November 2011

**Photographer:** Richard Scott Jones

**Photo Plates No's.** 212 and 213





*Plate 214. Removal of modern concrete floor in area of proposed lift shaft exposes the ceiling of victorian red brick cellar (Bay No.6). Looking south.*



*Plate 215. Removal of modern concrete floor in area of proposed lift shaft exposes the ceiling of victorian red brick cellar (Bay No.6). Looking west. Note remains of early oak timber floor joist.*

**Project Title:** Llanelly House

**Date taken:** November 2011

**Photographer:** Richard Scott Jones

**Photo Plates No's.** 214 and 215





*Plate 216. Detail shot showing remains of oak timber floor joist alongside victorian red brick cellar ceiling in area of proposed lift shaft (Bay No. 6)*



*Plate 217. Concrete floor and section of red brick cellar ceiling now removed. Looking southwest.*

**Project Title:** Llanelly House

**Date taken:** November 2013

**Photographer:** Richard Scott Jones

**Photo Plates No's.** 216 and 217





*Plate 218. Section of victorian red brick cellar removed for proposed lift shaft, exposing earlier cellar wall. Looking south.*



*Plate 219. Section of victorian red brick cellar removed for proposed lift shaft, exposing earlier cellar wall. Looking south.*

**Project Title:** Llanelly House

**Date taken:** November 2011

**Photographer:** Richard Scott Jones

**Photo Plates No's.** 218 and 219





*Plate 220. Exposed section of east facing elevation following removal of section of victorian red brick cellar for lift shaft insertion. Looking northwest.*



*Plate 221. Detail shot showing stratigraphy directly below east facing elevation of cellar following removal of section of victorian red brick cellar. Looking east.*

**Project Title:** Llanelly House

**Date taken:** November 2011

**Photographer:** Richard Scott Jones

**Photo Plates No's.** 220 and 221





*Plate 222. Shot showing projecting wall behind victorian red brickwork at far northwest corner of cellar. Looking north.*



*Plate 223. Section of flagstone cellar floor following removal of section of victorian red brick cellar for lift insertion at far southwestern corner.*

**Project Title:** Llanelly House

**Date taken:** November 2011

**Photographer:** Richard Scott Jones

**Photo Plates No's.**

222 and 223





*Plate 224. Further removal of modern concrete floor to accommodate lift shaft through victorian red brick cellar and Bay No. 6. Looking west.*



*Plate 225. Further removal of modern concrete floor to accommodate lift shaft through victorian red brick cellar and Bay No. 6. Looking south.*

<b>Project Title:</b> Llanelly House	<b>Photo Plates No's.</b> 224 and 225
<b>Date taken:</b> November 2011	
<b>Photographer:</b> Richard Scott Jones	





*Plate 226. Further removal of modern concrete floor revealing victorian red brick cellar vaulted ceiling. Looking southwest.*



*Plate 227. Further removal of modern concrete floor revealing victorian red brick cellar vaulted ceiling. Looking south.*

**Project Title:** Llanelly House

**Date taken:** November 2011

**Photographer:** Richard Scott Jones

**Photo Plates No's.** 226 and 227





*Plate 228. Overhead view of western end of exposed victorian red brick cellar vaulted ceiling, following removal of section of modern concrete floor.*



*Plate 229. Detail shot showing section of 'projecting wall' in foreground, exposed following removal of modern concrete floor. Looking east.*

**Project Title:** Llanelly House

**Date taken:** November 2011

**Photographer:** Richard Scott Jones

**Photo Plates No's.** 228 and 229





*Plate 230. View of western corner of Room G3, at the threshold leading to Room G4 (Stair Hall). Position of 'projecting wall'. Note remains of timber floor joist. Looking southwest.*



*Plate 231. View of 'projecting wall' with overburden and victorian red brick vaulting removed.*

**Project Title:** Llanelly House

**Date taken:** Nov-Dec 2011

**Photographer:** Richard Scott Jones

**Photo Plates No's.** 230 and 231





*Plate 232. Working shot during victorian red brick cellar removal. View of far west end showing earlier elevations now exposed. Looking southwest.*



*Plate 233. Working shot during victorian red brick cellar removal. Looking east.*

**Project Title:** Llanelly House

**Date taken:** Nov - Dec 2011

**Photographer:** Richard Scott Jones

**Photo Plates No's.** 232 and 233





*Plate 234. Section of newly exposed earlier cellar wall at west end of cellar. Looking south.*



*Plate 235. Section of newly exposed earlier cellar wall at west end of cellar. Looking west.*

**Project Title:** Llanelly House

**Date taken:** April 2012

**Photographer:** Richard Scott Jones

**Photo Plates No's.** 234 and 235





*Plate 236. Section of newly exposed earlier cellar wall at west end of cellar. Note section of projecting wall. Looking northwest.*



*Plate 237. Section of newly exposed earlier cellar wall at west end of cellar. Looking north.*

**Project Title:** Llanelly House

**Date taken:** Dec 2011

**Photographer:** Richard Scott Jones

**Photo Plates No's.** 236 and 237





*Plate 238. West end of flagstone cellar floor following removal of section of Victorian red brick cellar. Looking south.*



*Plate 239. West end of flagstone cellar floor following removal of section of Victorian red brick cellar. Looking south.*

**Project Title:** Llanelly House

**Date taken:** Dec 2011

**Photographer:** Richard Scott Jones

**Photo Plates No's.** 238 and 239





*Plate 240. Central section of newly exposed south facing earlier cellar wall. Looking north.*



*Plate 241. Central section of newly exposed south facing earlier cellar wall. Looking north.*

**Project Title:** Llanelly House

**Date taken:** Dec 2011

**Photographer:** Richard Scott Jones

**Photo Plates No's.** 240 and 241





*Plate 242. Working shot during Victorian red brick cellar dismantling. Looking west.*



*Plate 243. Working shot during Victorian red brick cellar dismantling. Looking east.*

**Project Title:** Llanelly House

**Date taken:** Dec 2011

**Photographer:** Richard Scott Jones

**Photo Plates No's.** 242 and 243





*Plate 244. View of threshold point between Room G3 and Room G2. Looking northwest.*



*Plate 245. Working shot during Victorian red brick cellar dismantling. View of lift shaft area during construction of base. Looking west.*

**Project Title:** Llanelly House

**Date taken:** Dec 2011

**Photographer:** Richard Scott Jones

**Photo Plates No's.** 244 and 245





*Plate 246. Central section of newly exposed north facing earlier cellar wall. Looking south.*



*Plate 247. Central section of newly exposed south facing earlier cellar wall. Looking north.*

**Project Title:** Llanelly House

**Date taken:** Dec 2011

**Photographer:** Richard Scott Jones

**Photo Plates No's.** 246 and 247





*Plate 248. Detail shot showing stratigraphy below wall foundation. Looking north.*



*Plate 249. Detail shot of limewash showing late 19th century pencil markings, likely associated with the construction of the red brick cellar in the late Victorian period. Looking south.*

<b>Project Title:</b> Llanelly House	<b>Photo Plates No's.</b> 248 and 249
<b>Date taken:</b> April 2012	
<b>Photographer:</b> Richard Scott Jones	





*Plate 250. Working shot during concrete floor removal and red brick cellar dismantling. Looking northwards.*



*Plate 251. North facing section of newly exposed earlier cellar wall at east end of cellar. Looking south.*

**Project Title:** Llanelly House

**Date taken:** April 2012

**Photographer:** Richard Scott Jones

**Photo Plates No's.** 250 and 251





*Plate 252. Detail shot showing hexagonal flagstone floor at east end of cellar. Looking northeast.*



*Plate 253. East facing elevation of retaining cross wall at far east end of cellar alongside access steps. Looking east.*

**Project Title:** Llanelly House

**Date taken:** April 2012

**Photographer:** Richard Scott Jones

**Photo Plates No's.** 252 and 253





*Plate 254. View of remaining section of red brickwork at far southeast corner of cellar. Looking east*



*Plate 255. East end section of exposed earlier cellar walling following removal of red brick cellar. Looking north.*

**Project Title:** Llanelly House  
**Date taken:** April 2012  
**Photographer:** Richard Scott Jones

**Photo Plates No's.** 254 and 255





*Plate 256. View of top of cross retaining wall at far southeast end of cellar following removal of concrete floor. Looking east.*



*Plate 257. View of demolition fill alongside access steps to cellar following removal of concrete floor. Looking south.*

**Project Title:** Llanelly House

**Date taken:** April 2012

**Photographer:** Richard Scott Jones

**Photo Plates No's.** 256 and 257





*Plate 258. Overhead view of southeastern end of cellar following removal of concrete floor.*



*Plate 259. Detail shot of small opening within a former blocked in opening at far east end of Room G3. Exposed following removal of concrete floor. Looking east.*

**Project Title:** Llanelly House

**Date taken:** April 2012

**Photographer:** Richard Scott Jones

**Photo Plates No's.** 258 and 259





*Plate 260. West facing elevation of Room G3, showing blocked in opening newly exposed following removal of secondary stairs and concrete floor. Looking east.*



*Plate 261. Enlarged view of blocked opening in area of secondary stairs in east wall. Opening cut by early 20th century foul drainage pipe. Looking east.*

<b>Project Title:</b> Llanelly House	<b>Photo Plates No's.</b> 260 and 261
<b>Date taken:</b> December 2012	
<b>Photographer:</b> Richard Scott Jones	





*Plate 262. Spliced photo of central spine of vaulted ceiling interior in Victorian red brick cellar. Looking upwards from interior of cellar.*

**Project Title:** Llanelly House

**Date taken:** April 2011

**Photographer:** Richard Scott Jones

**Photo Plate No.** 262



West

East



*Plate 263. Composite photograph of south facing elevation of former 18th and early 19th century cellar following removal of Late 19th century red brick cellar. Looking north.*

**Project Title:** Llanelly House

**Date taken:** December 2012

**Photographer:** Richard Scott Jones

**Photo Plate No.** 263



East

West



*Plate 264. Composite photograph of north facing elevation of former 18th and early 19th century cellar following removal of late 19th century red brick cellar. Looking south.*

**Project Title:** Llanelly House

**Date taken:** Feb - April 2012

**Photographer:** Richard Scott Jones

**Photo Plate No.** 264





*Plate 265. Remains of former 17th - 18th century opening exposed following removal of stone blocking in at far northeastern corner of Service Hall. Opening once linked Llanelly House with what is now the West Credit Union building. Looking northwards.*



*Plate 266. Detailed view of former service passage that gave access to former 17th - 18th century eastern end of the house, once occupied by the kitchens, but now by the West Credit Union. Looking north.*

<b>Project Title:</b> Llanelly House	<b>Photo Plates No's.</b> 265 and 266
<b>Date taken:</b> June 2011	
<b>Photographer:</b> Richard Scott Jones	





*Plate 267. Overhead view of remains of pair of wrought iron support bars found at base of stone block in at far north east corner of Room G3. Iron bars lie directly above mortared yellow firebricks, suggesting a possible arched opening directly beneath, possibly a 'warming oven' on the west credit union side?*



*Plate 268. View former 17th century floor level exposed at base of former opening that linked Llanelly House with what is now the West Credit Union building. Looking southwest.*

**Project Title:** Llanelly House

**Date taken:** June 2011

**Photographer:** Richard Scott Jones

**Photo Plates No's.** 267 and 268



# *Archaeology Wales*



**Archaeology Wales Limited**

Rhos Helyg, Cwm Belan, Llanidloes, Powys SY18 6QF

**Tel: +44 (0) 1686 440371**

Email: [admin@arch-wales.co.uk](mailto:admin@arch-wales.co.uk)

Company Directors: Mark Houlston MIFA & Jill Houlston

Company Registered No. 7440770 (England & Wales).

Registered office: Morgan Griffiths LLP, Cross Chambers,  
9 High Street, Newtown, Powys, SY16 2NY