

Archaeology Wales

Ardwyn, Former Children's Home Dinas Powys

Standing Building Recording



By
Louis Stafford BA (Hons)

Report 1317

Archaeology Wales Limited,
Rhos Helyg, Cwm Belan,
Llanidloes, Powys, SY18 6QF
Tel: +44 (0) 1686 413857
Email: admin@arch-wales.co.uk

Archaeology Wales

Ardwyn, Former Children's Home, Dinas Powys

Standing Building Recording

Prepared For: Asbri Planning
On behalf of Waterstone Homes

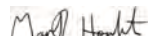
Edited by: Mark Houliston

Signed: 

Position: Managing Director

Date: 28/2/15

Authorised by: Mark Houliston

Signed: 

Position: Managing Director

Date: 28/2/15

By

Louis Stafford

Report No. 1317

February 2015



Archaeology Wales Limited,
Rhos Helyg, Cwm Belan,
Llanidloes, Powys SY18 6QF
Tel: +44 (0) 1686 440371
E-mail: admin@arch-wales.co.uk

Contents

| | | |
|---|-------------------------------|---|
| 1 | Introduction | 3 |
| 2 | Aims and Objectives | 4 |
| 3 | Methodology | 4 |
| 4 | Building Recording Results | 5 |
| 5 | Discussion and Interpretation | 8 |
| 6 | Acknowledgements | 9 |
| 7 | Bibliography and references | 9 |

List of Figures

| | |
|------------|--------------------------------------|
| Figure 1 | Site Location Map |
| Figure 2-6 | Historic Maps |
| Figure 7-8 | Existing Elevations of Ardwyn |
| Figure 9 | Existing Floor Plans of Ardwyn |
| Figure 10 | Phase Plan of Ardwyn |
| Figure 11 | External Photographic Plan of Ardwyn |
| Figure 12 | Internal Photographic Plan of Ardwyn |
| Figure 13 | 1947 Aerial Photograph of Ardwyn |
| Figure 14 | 1947 Aerial Photograph of Ardwyn |

Plates

| | |
|--------------|---|
| Plates 1-13 | External Photographs of Ardwyn |
| Plates 11-49 | Internal Ground Floor Photographs of Ardwyn |
| Plates 50-69 | Internal First Floor Photographs of Ardwyn |
| Plates 70-78 | Internal Second Floor Photographs of Ardwyn |

Appendices

- Appendix 1 Figures
- Appendix 2 Plates
- Appendix 3 AW Specification
- Appendix 4 Archive Cover Sheet

Copyright Notice: Archaeology Wales Ltd. retain copyright of this report under the Copyright Designs and Patents Act 1988, and have granted a licence to Waterstone Homes to use and reproduce the material contained within.

The Ordnance Survey has granted Archaeology Wales Ltd a Copyright Licence (100055111) to reproduce map information; Copyright remains otherwise with the Ordnance Survey.

Non-Technical Summary

Archaeology Wales Ltd was commissioned to carry out a Level 3 Building Survey of the former Ardwyn Children's Home, Pen Y Turnpike Road, Dinas Powys, for Asbri Planning Ltd on behalf of Waterstone Homes. The work was undertaken as a condition of planning consent (Vale of Glamorgan Council, Planning Application No: 2014/00167/FUL) prior to the redevelopment of the site. The structure, known as Ardwyn, was gifted to the National Children's Foundation in 1959 by Mrs Lilley of Dinas Powys and catered for the welfare of infants and children.

The survey noted that the former Children's Home, comprised of a brick-built structure, is in a good state of preservation. The structure had been refurbished and extended during the 1990s, while the original core of the building had been either covered or removed. Despite this, however, some original features still survive.

1 Introduction

Location and scope of work

In November 2014 Archaeology Wales Ltd (AW) carried out a building recording survey to level 3 English Heritage guidelines, of Ardwyn Children's Home, Pen Y Turnpike Road, Dinas Powys, located at NGR: ST 15601 71749 (Fig 1). The work was carried out as a condition of planning approval prior to the demolition of the building (Planning Application No: Vale of Glamorgan Council 2014/007/FUL).

The requirements of the survey were set out by Judith Doyle, the Archaeological Planning Manager at Glamorgan and Gwent Archaeological Trust (GGAT), in her capacity as archaeological adviser to the Vale of Glamorgan Council. A Written Scheme of Investigation (Appendix 3) was prepared by Mark Houlston (AW) prior to the work taking place. This was subsequently approved by the GGAT.

Geology and topography

The site lies at approximately 40m above sea level on the northern outskirts of the town of Dinas Powys. The land rises gently to the north and east toward small hillocks and steeply drops away in to the valley to the west and south where the Cadoxton River flows.

The underlying geology of the area is comprised of the Blue Anchor Formation - Dolomitic Siltstone and Mudstones. Sedimentary Triassic Bedrock formed from previous lake dominated environments.

Historical background

Ardwyn, Pen-y-Turnpike Road, Dinas Powys, was built as a private dwelling between 1934 and 1942. The property is set in extensive grounds and enjoys good views over Dinas Powys. In 1959 Mrs L. N. Lilley donated the house to the National Children's Home. Originally housing sixteen children from all over Britain, up to the ages of sixteen, the number was reduced over time, with ten noted as present in 1990.

The home, with its staff of three, was managed by the Methodist ordained Sister Eluned Williams between 1967 and 1990. Sister Williams placed great emphasis on community integration and the Ardwyn children were schooled at local schools and attended local sporting clubs. Despite the emphasis on community ties, prejudice against the children was encountered at times and the Ardwyn building was subject to an arson attack. The building became vacant in 2013 (Higginbotham 2015; WOL 2011).

Map Regression

The 1934 1:2500 Inch OS edition map shows the area of investigation and clearly demonstrates that the structure known as Ardwyn, is not present at this time (Fig 2).

The 1942 1:2500 Inch OS edition map shows the first phase of Ardwyn, with the main building present, orientated north west to south east, with a smaller north west wing projecting to the north west. A small rectangular structure is present against the south east side. A driveway proceeds south from the Pen Y Turnpike Road and terminates on the north-east side of the building adjacent to the main entrance, with a circular island feature. A pathway is present around the western end of the building and along the south-western elevation. A small outbuilding is present to the west of the building and a second one to the east within the grounds of Ardwyn. A T-shaped building, captioned 'Lodge' is also noted at the north end of the drive.

The 1969 and 1979-91 1:2500 OS edition maps show no changes to the previous. However an avenue of trees is not present along the eastern edge of the driveway leading toward the main building.

The modern 2014 edition OS Mastermap shows the assessment area as it appears today. Since the 1991 published release, the south east wing has been constructed. The main driveway circular island has been removed and a larger rectangular outbuilding is now located to the north-west of the main building. All 1:10560 OS maps post-dating 1936 were also consulted, although the resolution was too low to determine any changes. Google Earth Historical Imagery was also consulted, but did not define any further the changes noted in the historical mapping.

Survey Aims and Objectives

Building Recording

The aims of the building recording were:

- To provide a permanent paper and digital record of the structures prior to demolition through redevelopment.

- To assess evidence of phasing within the structure.
- To assess evidence of construction techniques and original features within the structure

2 Building Recording Methodology

Scope of Fieldwork

The recording was carried out to level 3 standards according to English Heritage guidelines (EH, 2006).

Project Archaeologist Louis Stafford BA (Hons) undertook the building recording. All photographs were taken in high resolution (18MP) digital format. These were converted to TIFF format for storage.

All works were undertaken in accordance with both the IfA's *Standards and Guidance for the archaeological investigation and recording of standing buildings or structures* (1996, Rev 2008) and current Health and Safety legislation.

3 The Building Recording

Figures 7-9 shows the existing ground floor plan and elevations of Ardwyn. Figure 11 and 12 show the location and direction of the photographic plates both externally and internally. The number after each red arrow corresponds to the plate on which the photograph appears. Not all the photographs taken on site are presented in this report. However, they are all included in the archive.

Plates 1-13 show views externally of Ardwyn. Plates 13-49 show views internally of ground floor. Plates 50-68 show views internally of the first floor. Plates 69-78 show views internally of the second floor. The survey found the building to have had alterations in several places. Original features were still present.

Noted additions to the structure include:

- The insertion of modern double glazing and fire doors throughout.
- The insertion of a gabled dormer and skylight in the north wing, north-east elevation. Plate 1
- The blocking of a doorway in the north-west elevation. Plate 6
- The insertion of a gabled dormer in the north wing, south-west elevation. Plate 7
- The extension south-east. Plate 10-12
- The insertion of stairs in the entrance hallway. Plate 15
- The insertion of a modern kitchen. Plate 35
- The insertion of a modern tiled storage room. Plate 37
- The blocking of ground floor fireplace. Plate 40
- Replacement of the stairs. Plate 51
- The blocking of the first floor bedroom fireplace. Plate 55
- The blocking of a doorway in the first floor games room. Plate 57

- The blocking of a window in the first floor games room. Plate 58
- The blocking of a fireplace in the first floor bay window room. Plate 59
- The insertion of a modern bathroom in first floor north wing. Plate 64
- The insertion of a skylight in second floor northern room. Plate 72

External

The building can be viewed as three sections (Plate 1); the central main section is three storey (Plate 2), the north-west wing is two storey (Plate 6 and 7) and the south-east wing is two storey (Plate 10-13). The building is orientated north-west to south-east, with the two wings at either end of the central section slightly smaller in width than the centre. They are all constructed of brick in a stretcher bond with the lower half of the wall left exposed and the upper sections with a pebble stucco effect painted cream. The main entrance on the north-east elevation is a half-timbered construction of Tudor style with the adjacent gable also similarly constructed (Plate 2).

The central section is a hipped roof construction, with a triple gable frontage and an outshot - a section of roof extending further down - at the north end (Plate 2). The rear elevation is twin gabled with a wide valley (Plate 8 and 9). The north-west and south-east wings are of a hipped roof construction which join the main central section, off centre toward the east side. The eaves are all overhanging timber boards painted black. The wings are interspersed with gabled dormers (Plate 10 and 12) and the roof trusses, where visible inside the building, appear as a common roof truss (Plate 65). There are two main chimney stacks located at either end of the main central section of the building, with a third smaller one visible on the south-east elevation of the south-east wing (Plate 10). The building is roofed with ceramic plain flat tiles with a half-round ridge plate (Plate 13).

The **south-east elevation** of the building has a two storey triple gable front which protrudes from the building, with the central gable slightly recessed from the flanking (Plate 2). The southern gable has a flared buttress on its southern end with four light mullioned windows in ground and first floor, with polished ashlar effect stucco, painted white around the window surround. A decorative diamond is located between the first and second floor with a group of four between the eaves of the roof. The central gable has a shorter three light mullioned window in its ground floor, with a taller six light mullioned and transom window in the floor above, both have the same polished ashlar effect stucco painted white around the window. The gable roof above the window is constructed with timber framing painted black, supported on a projecting ovolo moulded corbel table, with dentil carvings along the bottom chord and close studding and arched braces (Plate 2 and 3).

The **northern gable** has the main doorway for the building and is a half-timbered construction with the ground floor that of brick and the first floor and eaves of the gable constructed of timber framing (Plate 3). The doorway has a four-centred arch, with moulded spandrels featuring Tudor rosettes and a hood mould above. The door surround has polished stucco ashlar effect, painted white around the doorway (Plate 4). Above the doorway is an ovolo moulded corbel table supporting a projecting chamfered edge beam, with close studding above and a four light modern window centrally located in the first floor, with an ovolo carved sill. The gable is in the same style as previously noted, with close studding, arched braces and dentil work along the bottom chord. The eaves are overhanging, constructed of timber painted black supported on ovolo corbels. The side of the projecting gable has a two light mullioned window in the ground floor and abutting the main building, with polished stucco effect surround, painted white.

The same timber framing wraps around the side on the first floor, with a single modern light window in the first floor, with an ovolo carved sill (Plate 5).

North of the projecting gables, the main building has pebble stucco that has been painted a cream colour. A short single light window with polished stucco effect surround painted white is located in the first floor, a second tall slim window with a one over one light is adjacent. The roof just past the tall slim window has an outshot which proceeds down to the level of the ground floor ceiling, under the eaves of the outshot, still located in the first floor is a single light circular window with white stucco effect surround (Plate 2).

The ground floor of the **north-east elevation** below the outshot is a three light mullioned window, with white stucco effect polished surround, four more tall thin single light windows are present. Three are evenly spaced centrally along the north-west wing, whilst the fourth is slightly further north. The roof of the northern end of the wing is a gabled dormer with a modern three light window. The wing is supported by flared buttresses which extend north-west at either end of the north-west elevation (Plate 6).

The north-west elevation of the wing has a single door located centrally with flanking single light thin windows, the eastern window slightly taller than the west, with a second blocked doorway to the west of these. The windows and doorways, including one that is blocked, have polished stucco around the surrounds, painted white for the existing fenestrations, and cream for the blocked example. A small, two light, gabled dormer window is located centrally in the roof above (Plate 6).

The **south-east elevation** of the north wing has four sets of windows evenly spaced along its length. The northern two are single light thin windows, although the second southern window fenestration has a modern inserted metal flu. The third window is a two light mullioned, slightly taller in length, whilst the fourth three-light mullioned window is taller. The window surrounds are all in the same white painted polished stucco effect. In the roof, toward the southern end are two gabled dormers, with three light modern windows. The northern of the two is a circa 1990s insertion and is slightly longer than its southern original counterpart (Plate 7).

The main central three storey section of the building protrudes out from the north wing along the south-east elevation and extends outward again where the twin gables are located at either end (Plate 8). Octagonal window bays are located below the gables on the ground and first floor. The central bay on each floor has tall four light mullioned windows, with two lights on the outer panels. Doorways are located on the internal panels of the bays, with the exception of the southern ground floor internal panel, which has a tall two light mullioned window. A balcony joins the twin gables on the first floor, supported by a pair of columns on a brick wall which extends towards the centre from the window bays. A moulded cornice runs horizontally around the window bays and the bottom of the balcony. A flight of steps is located centrally between the twin gables which leads up from the garden to a modern double doorway. Centrally in the first floor between the twin gables is a modern three light window. In the roof above is a small thin gabled dormer with modern two light windows. The eaves of the twin gables are timber painted white with diamond decorations located centrally, a second polished stucco effect decoration is located below the central bay on the first floor. The southern end of the main central section of the building has a flared buttress and marks the limits of the original building (Plate 9).

The southern wing has five windows along the south-west elevation, from north to south; two light mullioned, three light mullioned, three light mullioned, single light and single light. The surrounds of these windows are of painted white plain square stucco effect without any ashlar effect indentation or scoring. Three gabled dormers approximately evenly spaced are located in the roof above with modern three light windows. The south-east elevation of the south wing has a single gabled dormer in the roof offset toward the west (Plate 11 and 12).

The **north-east elevation** of the southern wing has a recessed fire escape located centrally along its length, with an outshot forming part of a covered area in front of the doorway and a protruding octagonal bay with a two light modern window to the south. South of this is a single light modern window with a two light mullioned modern window south again. North of the doorway is a two light modern mullioned window and toward the north end of the elevation a single modern light window with a maintenance vent between the two. The windows have the same white painted plain square stucco effect surrounds as the rear elevation. Two gabled dormer with modern three light windows are located at either end of the roof, with three small skylights located approximately central in the roof, with a small square chimney stack toward the north end (Plate 10).

The main chimney stacks which are located at either end of the main central three storey building, toward the west side have small gabled sections extending out from the ridge line of the hip (Plate 13). Adjacent to the chimney stack on the southern side on the opposite ridge line is a gabled dormer with modern two light window. On the north side east of the protruding gable chimney stack support are just two small skylights.

Internal

Entering the building through the main entrance located in the north-east elevation is a small vestibule, with double doors opposite (Plate 14). These lead onto the main hallway. A chamfered edged mullioned window is located to the right adjacent to a set of modern stairs which lead up (Plate 15). To the left is a doorway which leads to a modern toilet block (Plate 16). Straight ahead are a set of two doors which lead to the dining hall, left and right of those is the main corridor which lead onto the wings at either end.

The corridor which leads right from the main hallway has a door at the end which enters the north wing, adjacent to this is a second doorway which enters under the stair well. The room under the stairwell has original red quarry tiles which may have been utilised throughout the ground floor entrance hallway originally and appear to underlie the stud wall separating the room from the corridor (Plate 17). Turning left from the hallway, the corridor contains the main stairs that lead up to the first floor and a doorway adjacent that leads onto a large room with a blocked fireplace against the southern wall and chamfered mullioned windows in the east wall; this room held a key box and appeared to be a carer's room (Plate 40).

The main dining room located off the hallway is a long rectangular room split by a folding screen wall (Plate 18). At either end of the room are the original art deco fireplaces (Plate 20-22). Octagonal window bays with chamfered edged mullioned windows are located at either end of the western wall with ornate carved pelmet boxes featuring Tudor rosettes (Plate 25). Plaster work panels festoon almost all the walls with foliate decorated borders (Plate 28 and 29). The ceilings are similarly decorated with the roof beams heavily moulded with cornice work bordering long roof panels, which feature further leaf decorations and Tudor rosettes (Plate 26, 27, 30 - 34). The

floor appears to be original with a timber parquet floor. Other notable features are a serving hatch at the north end and a blocked window with an inserted mirror at the south end adjacent to the fireplace (Plate 23).

Proceeding from the dining hall north along the corridor is the main kitchen, which has chamfered edged three light mullion windows in the east and west walls (Plate 36). The kitchen and internal features appear to be all modern (Plate 35). Leading north from the kitchen is a tiled storage room which has a chamfered edged two light mullioned window in its western wall. A doorway straight ahead leads further along the corridor with a door to the right which leads to a second storage room which has two single light chamfered edged mullioned windows in the east wall. These room appear modern in fabric and have been stripped of any original features. The tiled room has one arched recess in the north wall abutting the west (Plate 37). This possibly related to the blocked wall in the north-west elevation of the building.

Entering the corridor to the north, there is a glass internal window four over four light in the east wall which is constructed of brick and painted white (Plate 38). Adjacent to the glass panel is a door which leads onto a room with two single light windows at either end of the east wall. The room has been stripped and is modern in fabric. Adjacent to this room is a small storage room with exposed brick and no notable features.

The west wall of the corridor has three doorways which lead onto storage rooms with exposed brick and no notable features (Plate 39), the third doorway has a modern toilet located in it and a single light window in the north wall. At the end of the corridor is a modern doorway which leads out of the north wing.

Proceeding south along the corridor from the main hallway is a doorway leading down a small set of steps to the south wing (Plate 41 and 43). The entire wing appears very modern with very few features except the windows which are apparent from the external elevations. The left side of the corridor has the welfare for the wing. The first door leads to a small modern shower and toilet unit with a window at the far end (Plate 42). The second doorway leads to a modern wrap around kitchen with a two light mullioned window at the far end (Plate 44). The third was not accessible but appears to be a boiler room. Adjacent to this room is the fire escape door and steps leading to the first floor (Plate 45). The right side of the corridor has four doorways each leading to a bedroom, the first bedroom has an alarm fitted on the wall, which suggests it was a carer's room. Each bedroom had a wooden desk and storage for clothing with an un-sprung wooden bed, no other internal features apart from the windows were apparent (Plate 46-49). At the far end of the corridor it turns left and another bedroom is located in the corner with a small modern toilet to the left.

The main flight of steps which leads up to the first floor from the hallway by the main entrance doors is constructed of timber panelling, which appears to be original (Plate 50). The stairs have a half landing with tall chamfered edged three over three light mullioned and transom windows (Plate 52). The lower ballustrade which are present from the half landing up to the first floor are the turned type and appear original except one, the upper landing ballustrade appear to be later additions and are a plain vase type (Plate 51). The stairwell is separated by a stud wall from the landing, which has a glass window and doorway which access the main first floor corridor.

Entering the first floor corridor from the main stairs the corridor leads left with a doorway leading to a bedroom on the left (Plate 53), with what appeared to be a blocked fireplace in the south wall, with a small single light window adjacent and a four

light chamfered edge mullioned window in the east wall (Plate 55). The doorway opposite was marked as 'games room'. The room had an octagonal bay window in the west wall, with the original plain pelmet box, a blocked door was located in the north wall, with a blocked window and fireplace in the east (Plate 56-58). A small single light window was adjacent to the chimney breast. Adjacent to the games room door was a modern shower and toilet unit with a modern three light window at the far end. Adjacent and right of this door along the corridor was a second octagonal bay window room, with a blocked fireplace in the north wall with an adjacent single light window to the left (Plate 59). There was no pelmet box or other features in this room and it may have served as an office as there was a key box for the building on the wall. Opposite this room the doorway was marked as the 'art room' and had a built in cupboard in the corner and a works surface with a sink unit. A single light window was located in the north wall and a modern four light window in the east.

Along the corridor to the north were a set of steps in the west wall which led up to the second floor and opposite a doorway with stairs that led back to the main entrance hallway on the ground floor. Adjacent to this doorway was a small room with a circular window and a single seat along one edge, this room served as a telephone room (Plate 60). The corridor drops down a small flight of steps at this point, into the north wing.

The north wing corridor has a two doorways on the left side, with a third at the far end, the right side of the corridor has modern skylights and a recess in the roof eaves for cupboard space (Plate 61 and 62). The first doorway leads to a bedroom with a gabled dormer in the west wall and a built in wardrobe in the south wall (Plate 63). The second doorway is a modern bathroom unit with a gabled dormer window in the west wall (Plate 64). The door at the end of the corridor leads to another bedroom with a gabled dormer window in the north and east walls (Plate 65). The only notable features apparent in this room was the exposed roof supports (Plate 66 and 67).

The corridor at the opposite end of the building which leads down a flight of steps to the south wing first floor has the carer's bedroom in the first door on the left, fitted with notification alarm of doors opening. The bedroom has a gabled dormer window in the west wall and a doorway leading to an en-suite toilet and shower in the north wall. Further along the corridor along the left side, is a modern bathroom and toilet, with a second toilet adjacent. The third door leads down a flight of steps to a half landing and then down to the fire escape on the ground floor. Along the right side of the corridor are three bedrooms, all similarly fitted with storage for clothes, a small desk and un-sprung bed, with a gabled dormer window in each, at the far end of the corridor are two further bedrooms in each corner (Plate 68).

Proceeding up the stairs to the second floor there appears to be a further two bedrooms, each with a small fireplace and cupboard fitted with a sink. The corridor on the second floor leads from the stairs south, with a doorway on the right leading to the first bedroom with the cupboard/sink in the south wall, a gabled dormer window in the west and the fireplace in the north wall (Plate 69-73). The room also has a modern skylight adjacent to the fireplace. At the far end of the corridor is the doorway to the second room, with a cupboard/sink in the north wall, and a fireplace and gabled dormer window in the south. Exposed roof timbers were visible, but these rooms had also undergone modernisation during the renovation work in 1990s and few features were apparent (Plate 74).

Discussion and Interpretation

Reliability of field investigation

A large portion of the original structure was visible and the survey collated enough information to determine its original structure and function. Apart from the addition of a modern extension and recent refurbishment work, very little appears to have changed since 1959 when the building became a children's home.

Only a representative collection of the photographs taken during the site survey has been included in this report. A photographic appendix containing all of the photographs taken is contained on a separate disc, which is stored with the site archive.

Interpretation

Ardwyn was constructed during the latter end of the inter-war period and incorporated a blend of 'modern' and mock Tudor projecting frontages, including tall, thin, internal chamfered-edge mullion windows of a more Gothic style and gabled dormers in a Georgian style. The building exhibits all of these features in an unusual and unique blend; another example would be difficult to find.

The original elements of the main building appears to have been renovated in the 1990s, with a southern extension of the same date. The southern extension is in a similar style to the original northern wing, the major difference being that the new windows have modern, double egress, mullions, suitable for double-glazing, and there is no ashlar effect on the window surrounds. Two gabled dormers were inserted into the north-west wing of the building during this time, adding additional space. Given that the numbers of residents decreased during this period, it is likely that the extensions provided further welfare spaces. The renovation removed or covered the majority of the internal features in this area, making interpretation of the fabric and original layout difficult, but it is unlikely that it changed drastically.

The building exhibited some of its original internal features, which were preserved in the timber-clad staircase and the ground floor main rooms. Original 1950s art deco fireplaces are still present in these rooms and are apparently still usable. The rooms were also bedecked with Tudor Rosettes and plasterwork along the walls and ceilings, which appeared contemporary with the initial build. The second floor also appeared unchanged, with only minor modern fixtures in the form of skylights and plasterwork dating to the 1990s renovation, whilst the original fireplaces were still open and present. Although these original internal features are relatively common compared to the unusual external form of the building, they are of good quality and represent part of the fabric and history of Ardwyn.

4 Acknowledgements

Archaeology Wales would like to thank Asbri Planning Ltd for their help on-site and for the opportunity to document an unusual building, which has formed part of the history and culture of not only Dinas Powys, but of the many lives of the children who had lived at Ardwyn.

5 Bibliography and references

British Geological Survey, 2001, 4th Edition, Solid Geology Map, UK South Sheet

English Heritage, 2006, *Understanding Historic Buildings*, English Heritage

Higginbotham, P. 2015. Ardwyn, Dinas Powis. The Children's Homes website <http://www.childrenshomes.org.uk/DinasPowisNCH/> (accessed 01/15)

Institute for Archaeologists, 1996, Revised 2011, *Standards and Guidance for the archaeological investigation and recording of standing buildings or structures*

WOL. 2011. Our Idyllic life in a children's home. Wales online <http://www.walesonline.co.uk/lifestyle/showbiz/idyllic-life-childrens-home-1852650> (accessed 02/15)

<http://www.theirhistory.co.uk> (last accessed 02/2015)

Historical Cartographic Sources Consulted

1934 6 Inch OS MAP of Glamorgan (XLVII.SW)

1942 OS County Series map of Glamorgan 1: 2500

1969 OS County Series map of Glamorgan

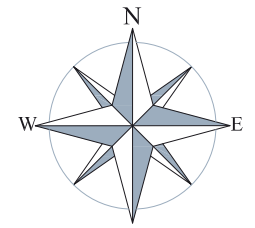
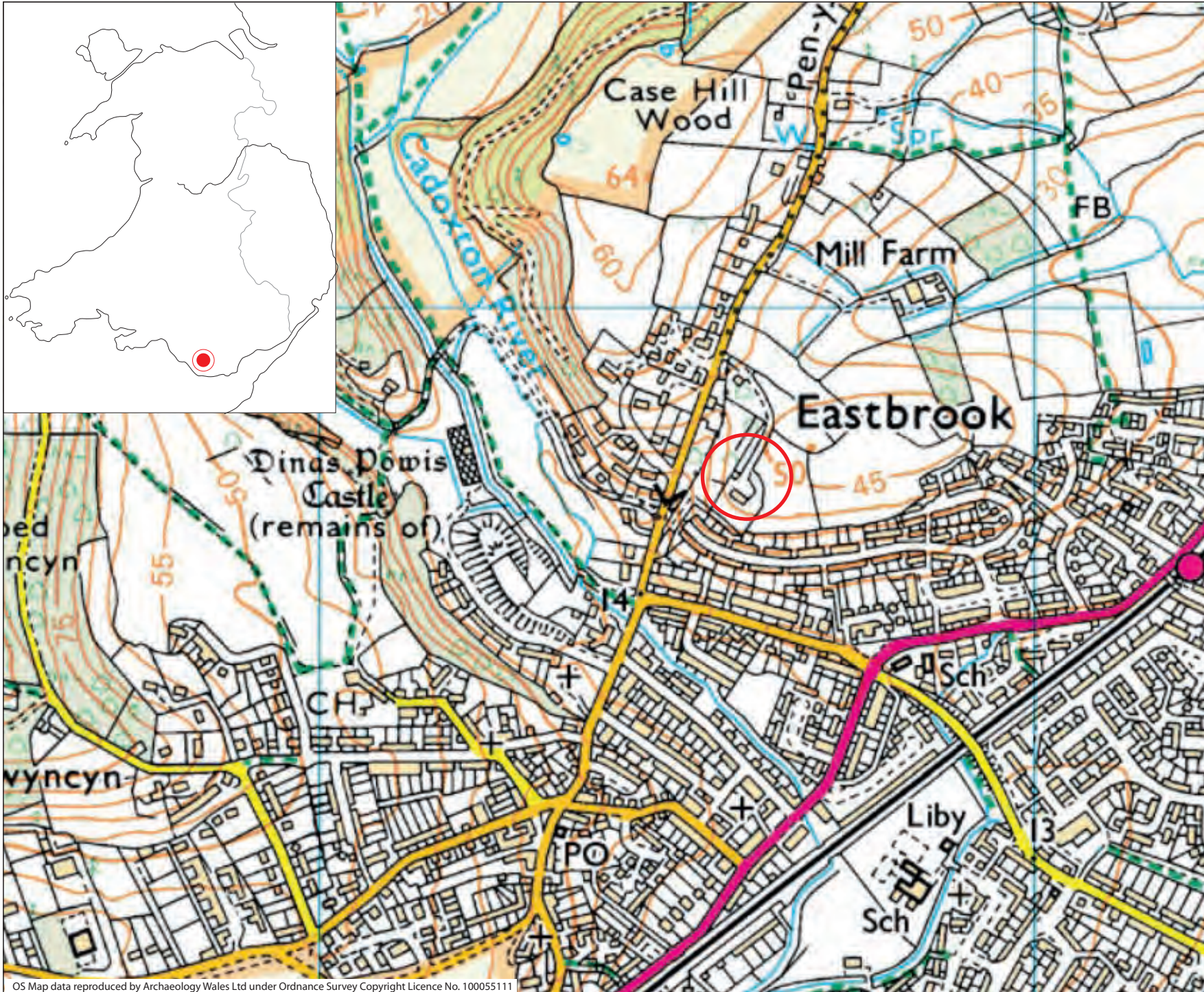
1979-1991 OS Map (Additional SIMs) 1:2500

Figure 13 and 14 images © *Crown copyright: Royal Commission on the Ancient and Historical Monuments of Wales: Aerofilms Collection*

Archaeology Wales

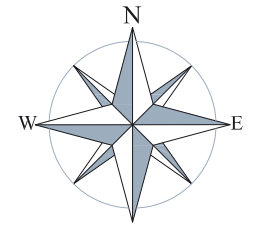
APPENDIX I:

Figures



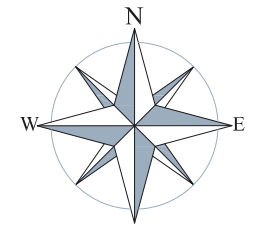
Site Location

Fig 1: Site Location



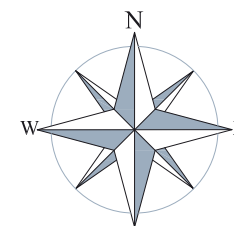
Site Boundry

Fig 2:
1934 6 Inch Edition OS Map
of Glamorgan



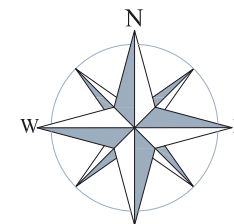
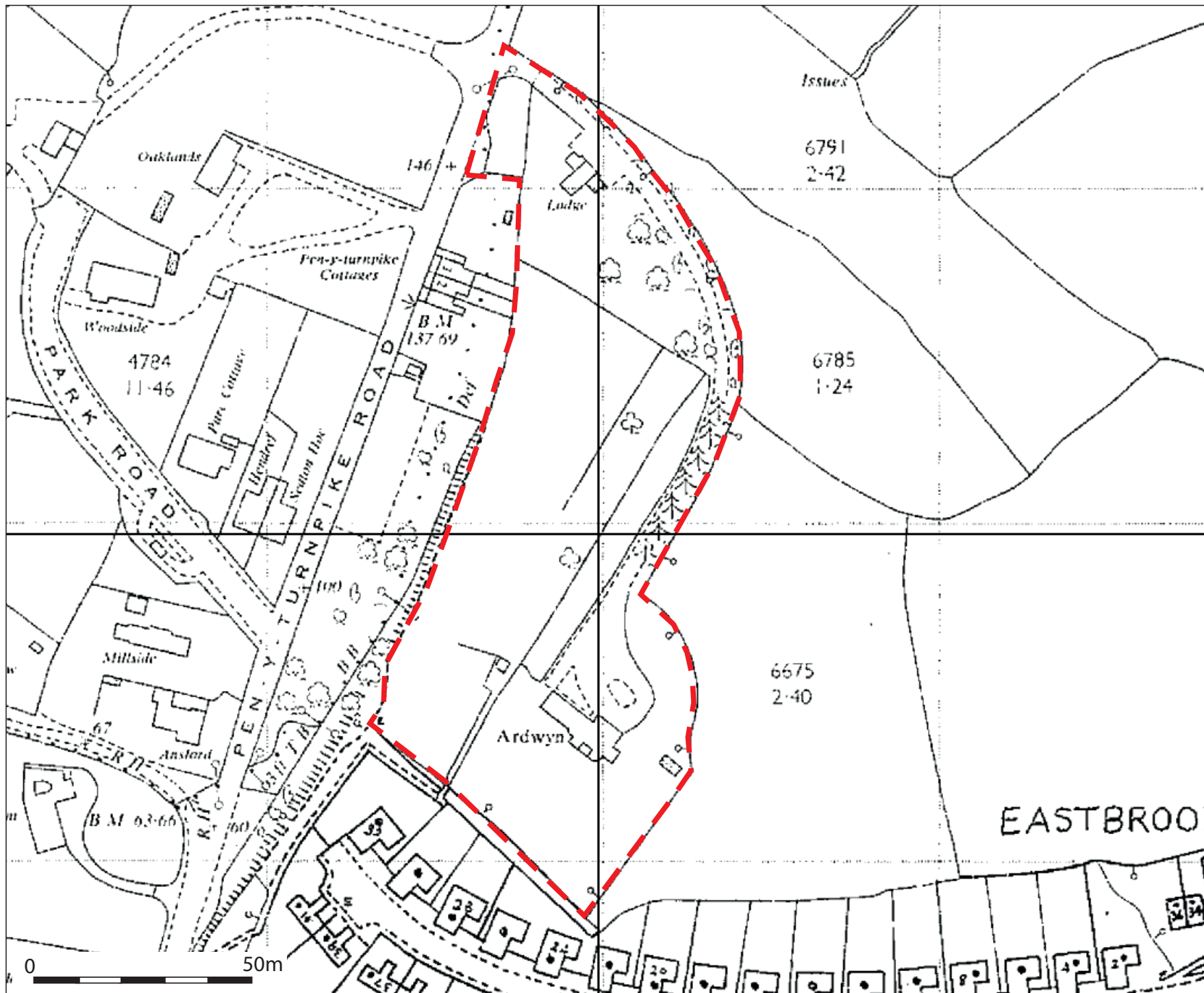
Site Boundry

Fig 3:
1942 OS County Series
Map: Glamorgan. 1:2500



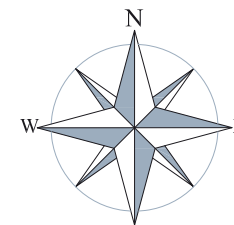
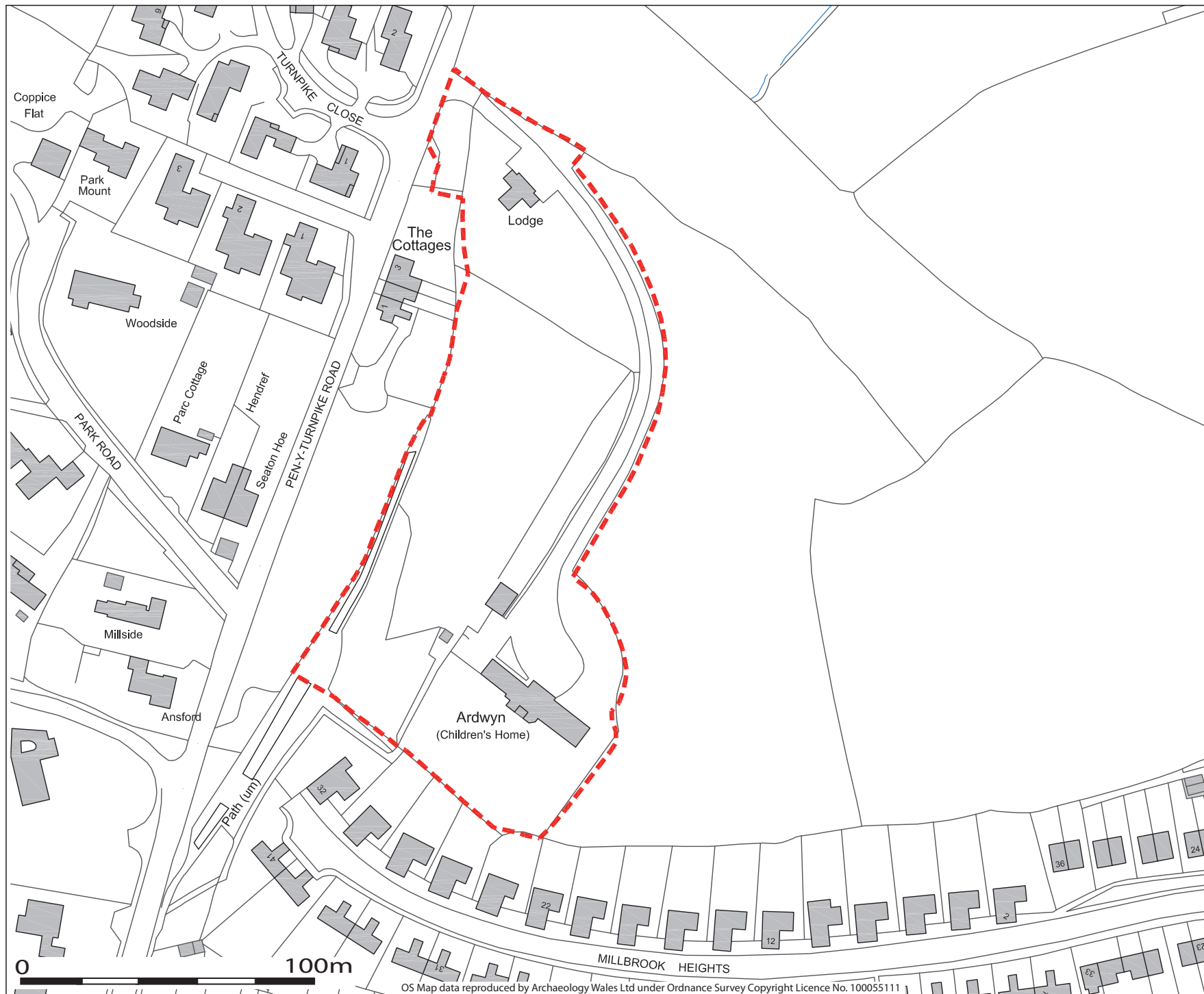
Site Boundry

Fig 4:
1969 OS County Series
Map of Glamorgan.1:2500



Site Boundry

Fig 5:
1979-91 OS Map showing
site.



Site Boundry

Fig 6:

2014 OS Map

South-west Elevation



North-east Elevation



Fig 7: Existing Elevations

South-east Elevation



North-west Elevation

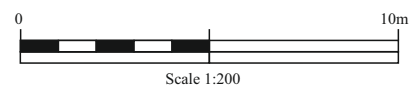
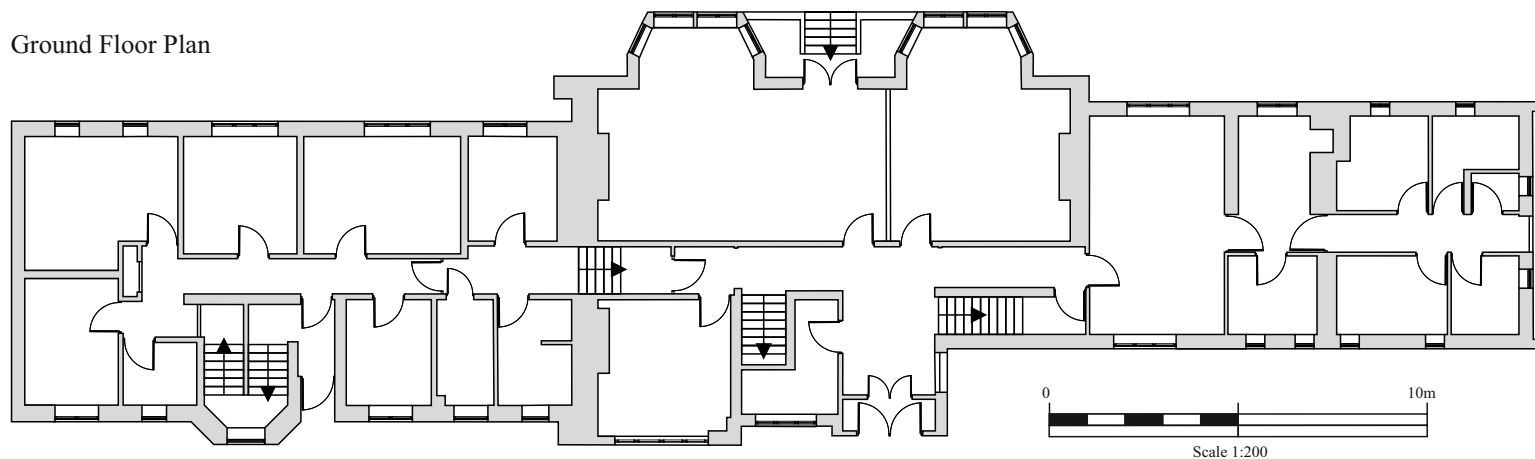
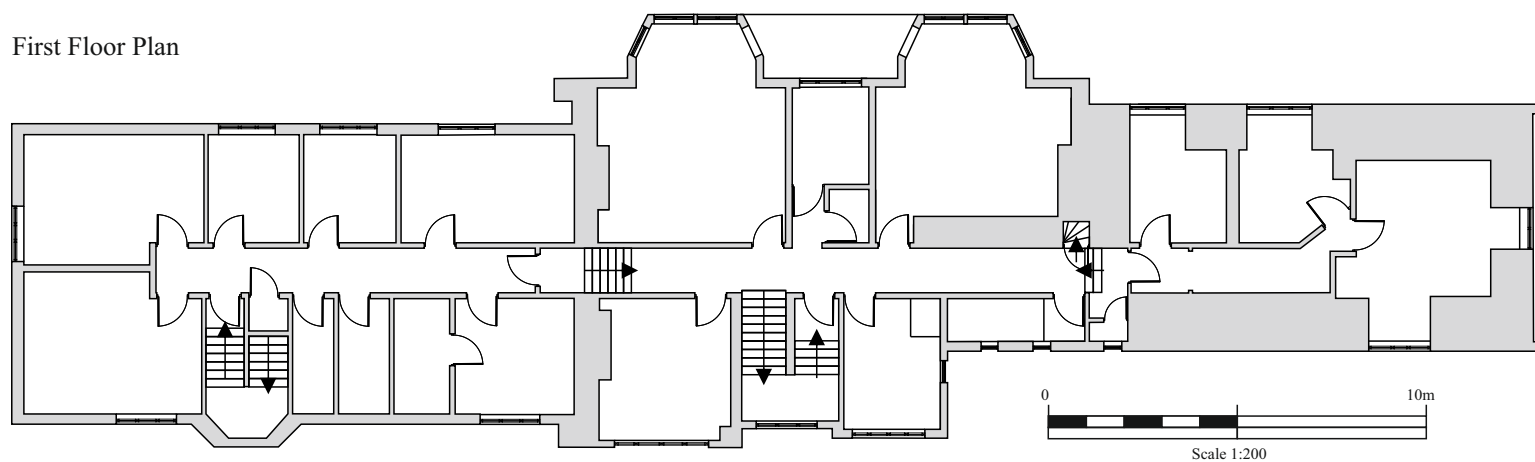


Fig 8: Existing Elevations

Ground Floor Plan



First Floor Plan



Second Floor Plan

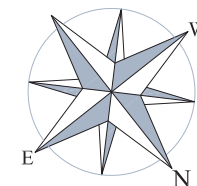
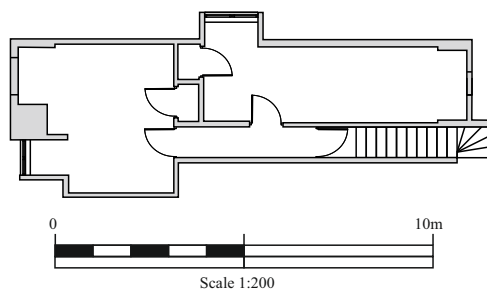
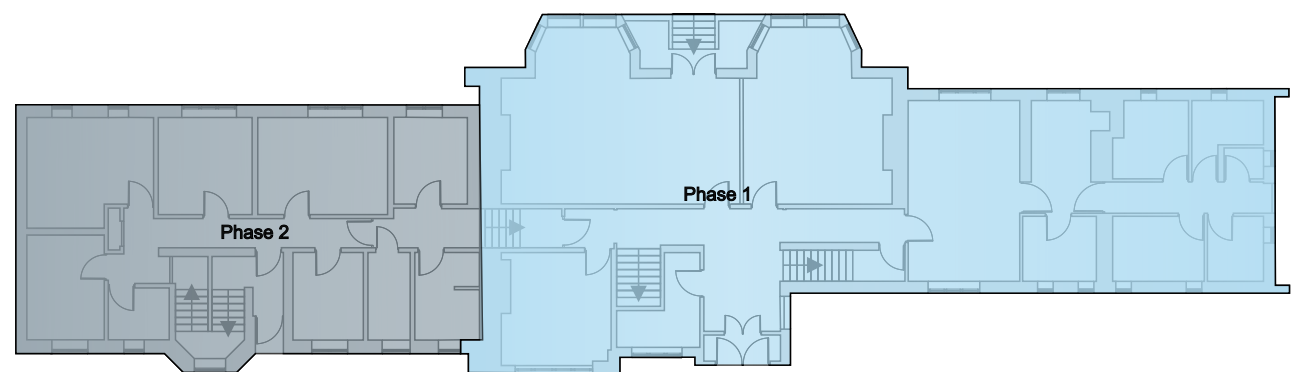


Fig 9: Existing Floor Plans



c.1935-40

Phase 1

1991-2001

Phase 2

Fig 10: Phasing Plan

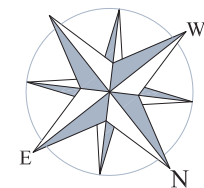
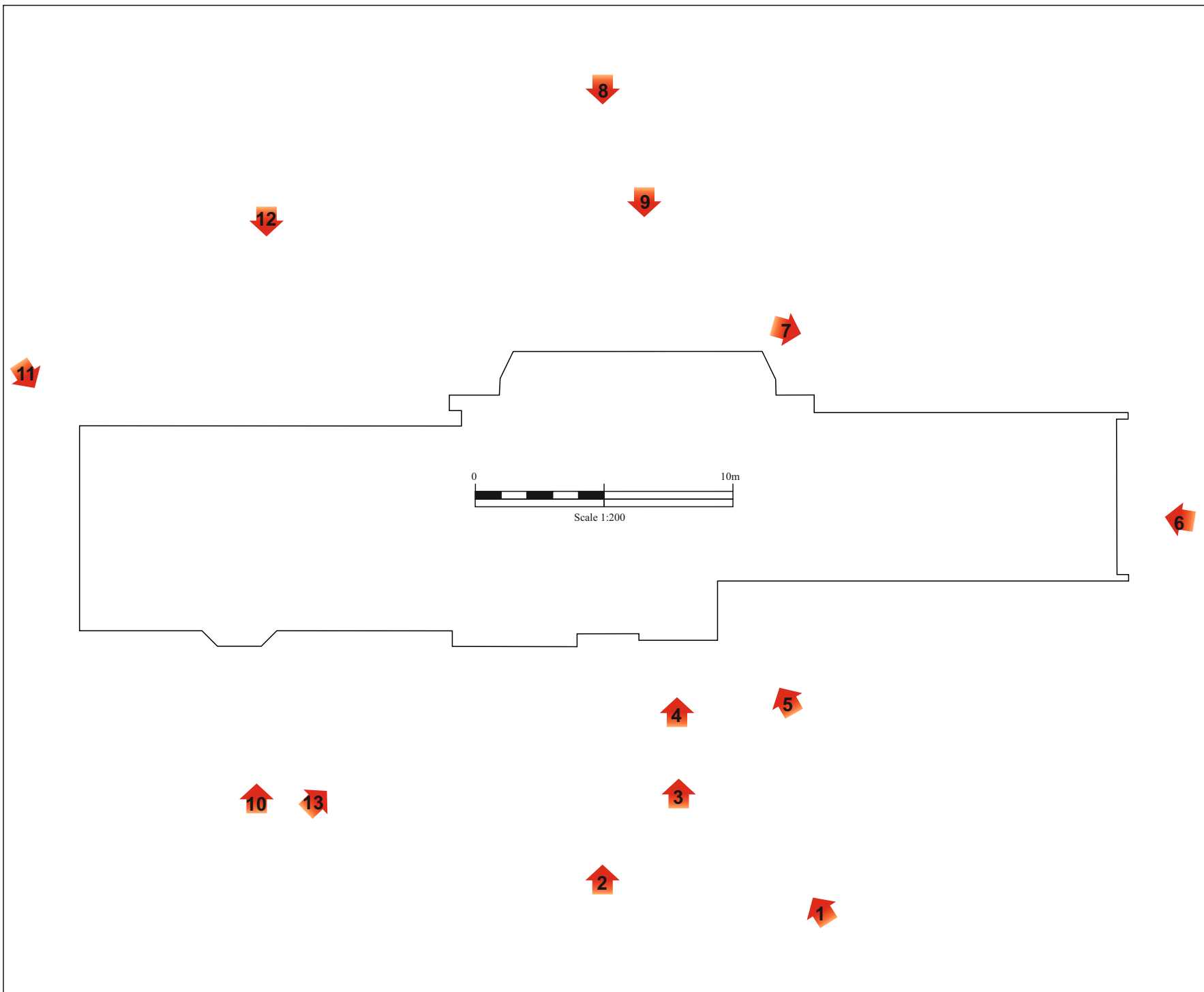


Fig 11: External Photograph Location Plan, Arrows Correspond to Direction and Plate Number

Ground Floor Plan



First Floor Plan



Second Floor Plan

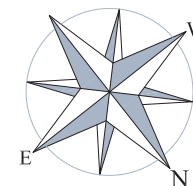
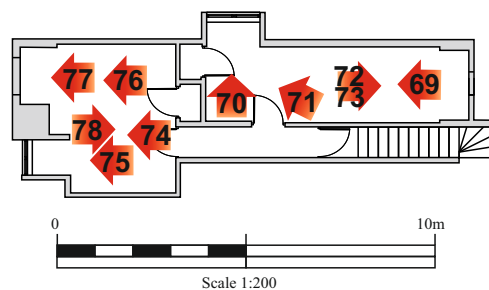


Fig 12: Photograph Location Plan, Arrows Correspond to Direction and Plate Number



© Crown copyright: Royal Commission on the Ancient and Historical Monuments of Wales: Aerofilms Collection

Fig.13

View of Ardwyn
1 September 1947
(looking south-east)



© Crown copyright: Royal Commission on the Ancient and Historical Monuments of Wales: Aerofilms Collection

Fig.14

View of Ardwyn
1 September 1947
(looking north-west)

Archaeology *Wales*

APPENDIX II:

Plates



Plate 1: View south, showing Ardwyn north-east elevation(front)



Plate 2: View south-west, showing north-east elevation main frontage

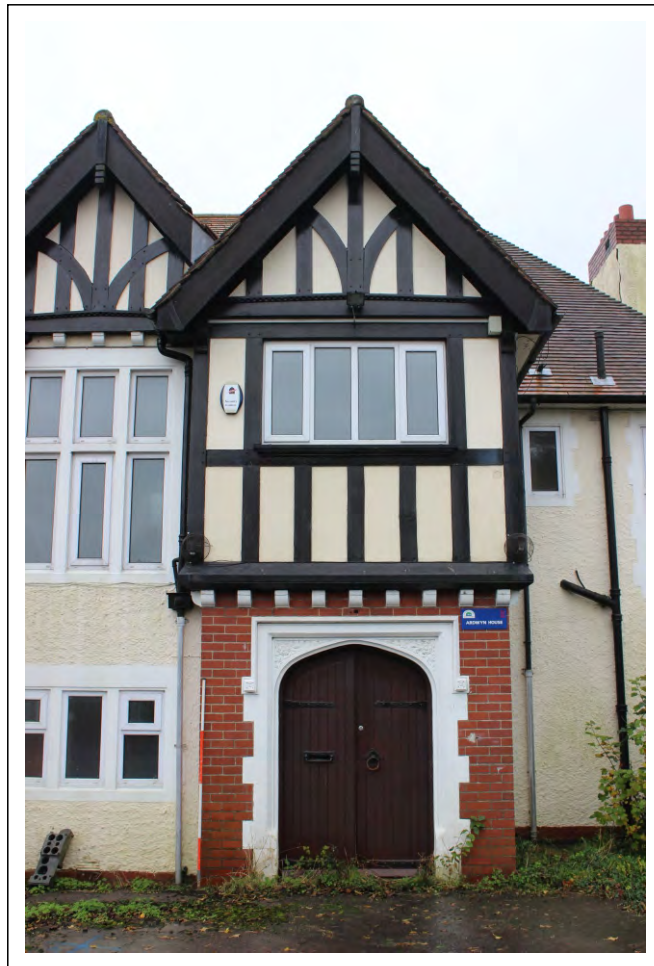


Plate 3: View south-west, showing mock Tudor projecting corbel table and timber work



Plate 4: View south-west, showing main doorway



Plate 5: View south, showing side detail of main doorway



Plate 6: View south-east, showing north-west elevation



Plate 7: View north, showing north wing south-west



Plate 8: View north-east, showing south-west elevation



Plate 9: View north-west, showing main building south-western elevation



Plate 10: View south-west, showing later southern extension north-east elevation



Plate 11: View north, showing later southern extension south-east elevation



Plate 12: View north-east, showing later southern extension south-western elevation



Plate 13: View west, showing west, showing roof



Plate 14: View south-east, showing vestibule inner doors



Plate 15: View north, showing entrance hallway first floor stairs and corridor



Plate 16: View south, showing southern corridor



Plate 17: View south-east, showing red quarry tile flooring



Plate 18: View north-west, showing northern dining room



Plate 19: View south, showing southern dining room



Plate 20: View south-east, showing southern dining room art deco fireplace



Plate 21: View north-west, showing northern dining room art deco fireplace



Plate 22: View north-west, showing northern dining room art deco fireplace



Plate 23: View south-east, showing blocked window



Plate 24: View south-east, showing detail of plaster work panel



Plate 25: View south-west, showing southern dining room bay windows



Plate 26: View south-west, showing southern dining room bay window plaster work



Plate 27: View south-east, showing southern dining room ceiling plaster work



Plate 28: View north, showing northern dining room plaster work wall panels



Plate 29: View north, showing southern dining room plaster work wall panels



Plate 30: View north-west, showing northern dining room plaster work ceiling panels



Plate 31: Close-up detail of plaster work ceiling panel Tudor rosettes



Plate 32: Close-up detail of plaster work ceiling panel borders



Plate 33: Close-up detail of plaster work ceiling panel borders



Plate 34: Close-up detail of plaster work ceiling panel Tudor Rosettes



Plate 35: View south, showing modern kitchen in north wing



Plate 36: View north-east, showing ground floor north wing modern kitchen



Plate 37: View north-west, modern tiled storage room



Plate 38: View north-west, north wing corridor

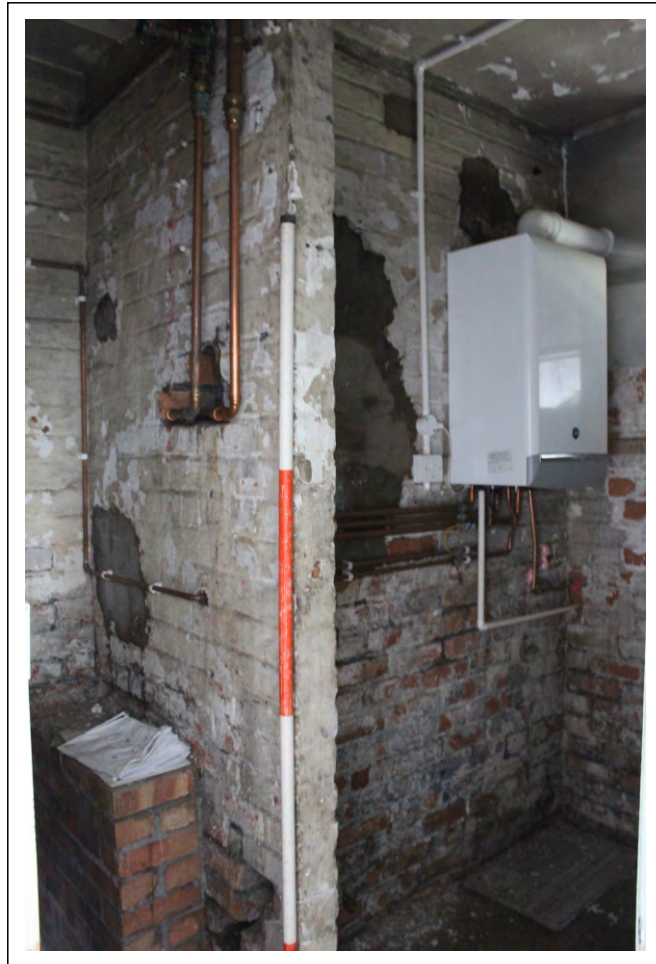


Plate 39: View south, showing utilities room



Plate 40: View south-east, showing blocked fireplace

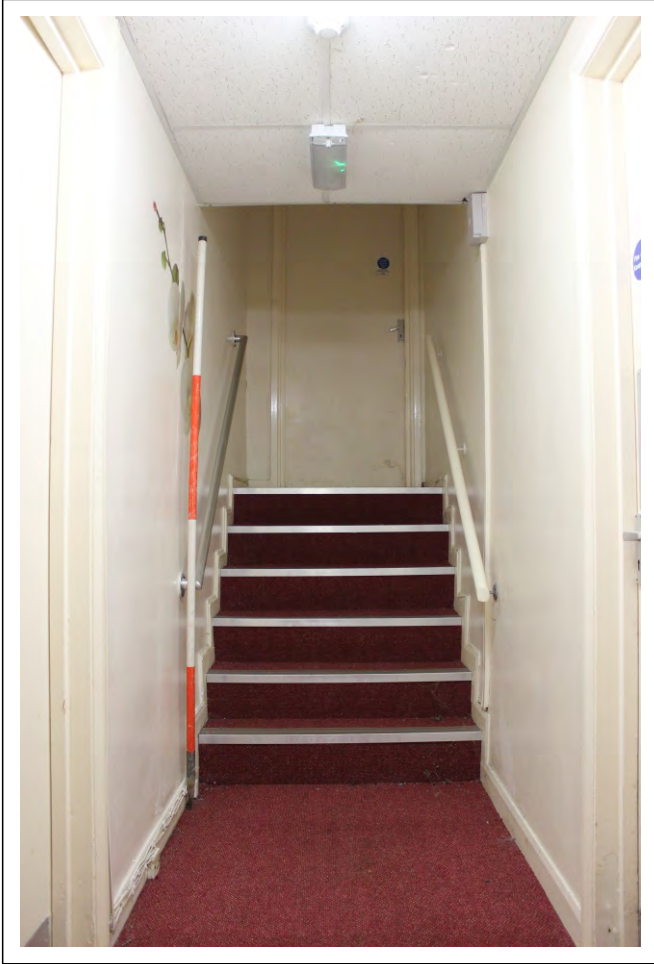


Plate 41: View north-west, southern wing corridor stairs



Plate 42: View north-east, showing southern wing ground floor modern bathroom unit



Plate 43: View south-east, showing southern wing ground floor corridor



Plate 44: View north-east, showing southern wing ground floor modern kitchen



Plate 45: View north-east, showing southern wing ground floor modern fire escape

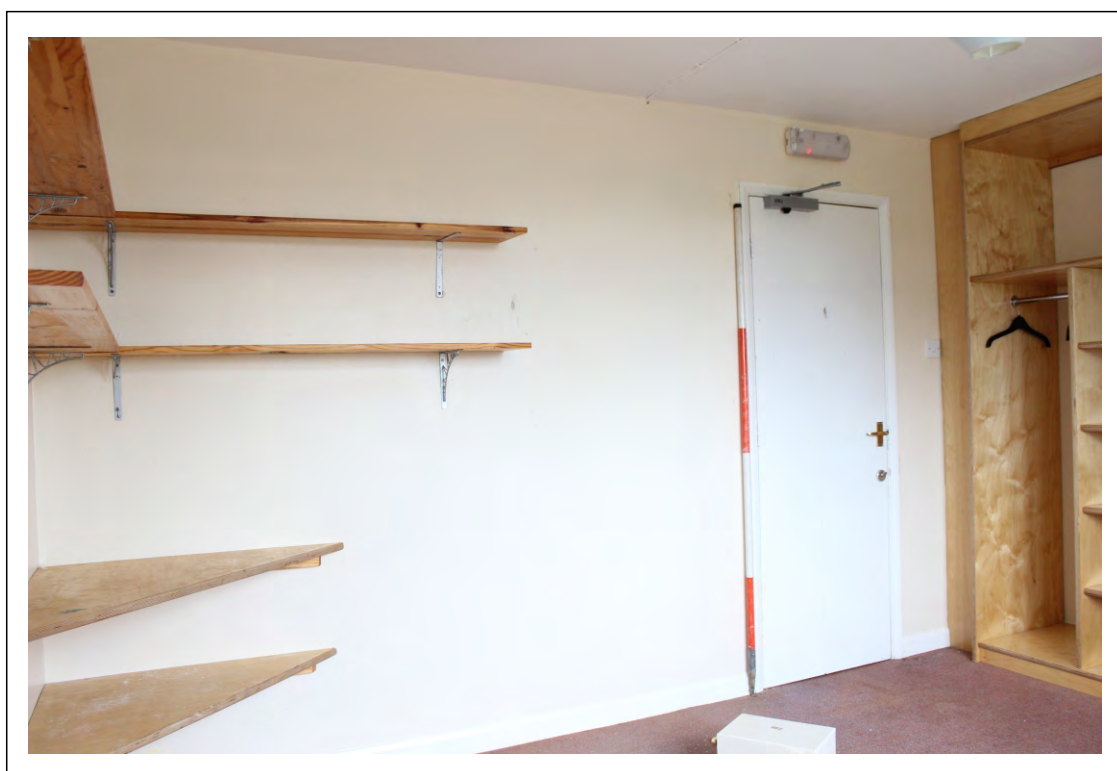


Plate 46: View east, showing southern wing bedroom



Plate 47: View south-east, showing southern wing bedroom



Plate 48: View north-east, showing southern wing bedroom



Plate 49: View north, showing southern wing bedroom

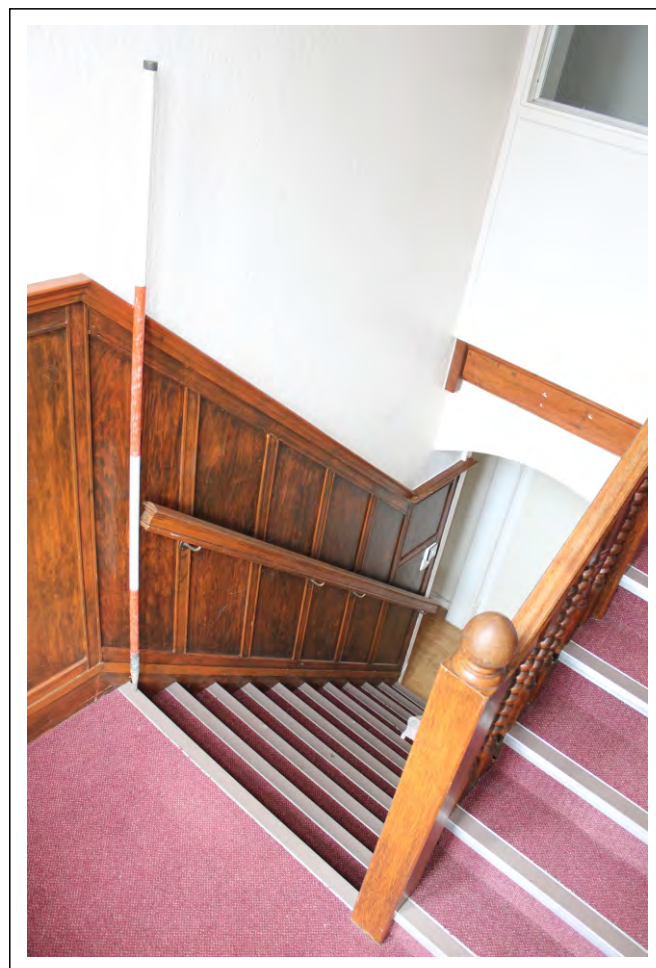


Plate 50: View south-west, showing main timber clad stairwell



Plate 51: View south-west, showing main timber clad stairwell

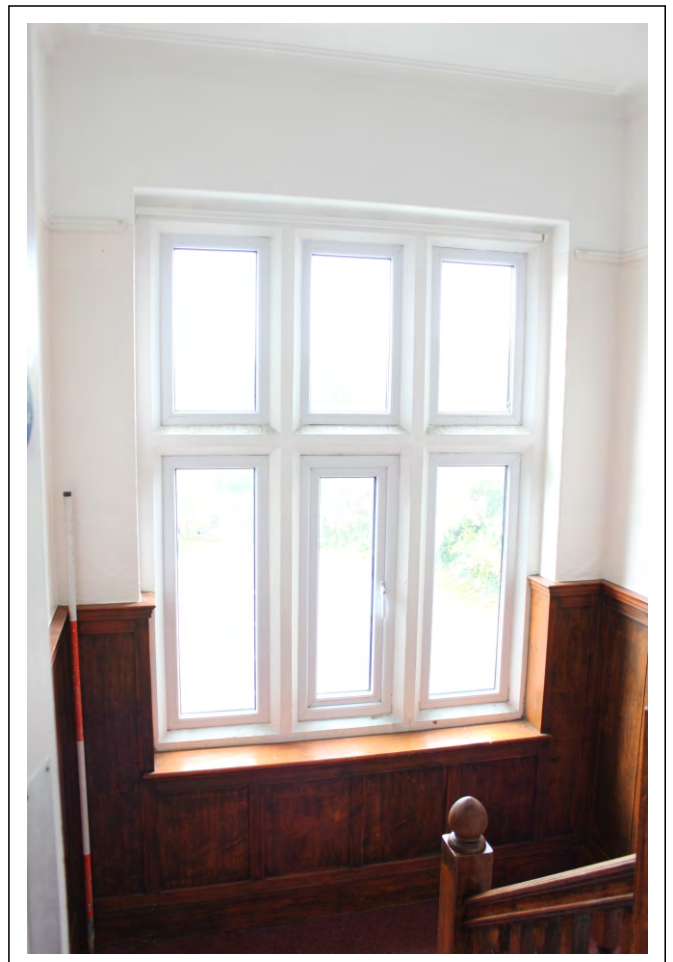


Plate 52: View north-east, showing main stairwell and window



Plate 53: View north-west, showing first floor main corridor



Plate 54: View south-east, showing first floor main corridor

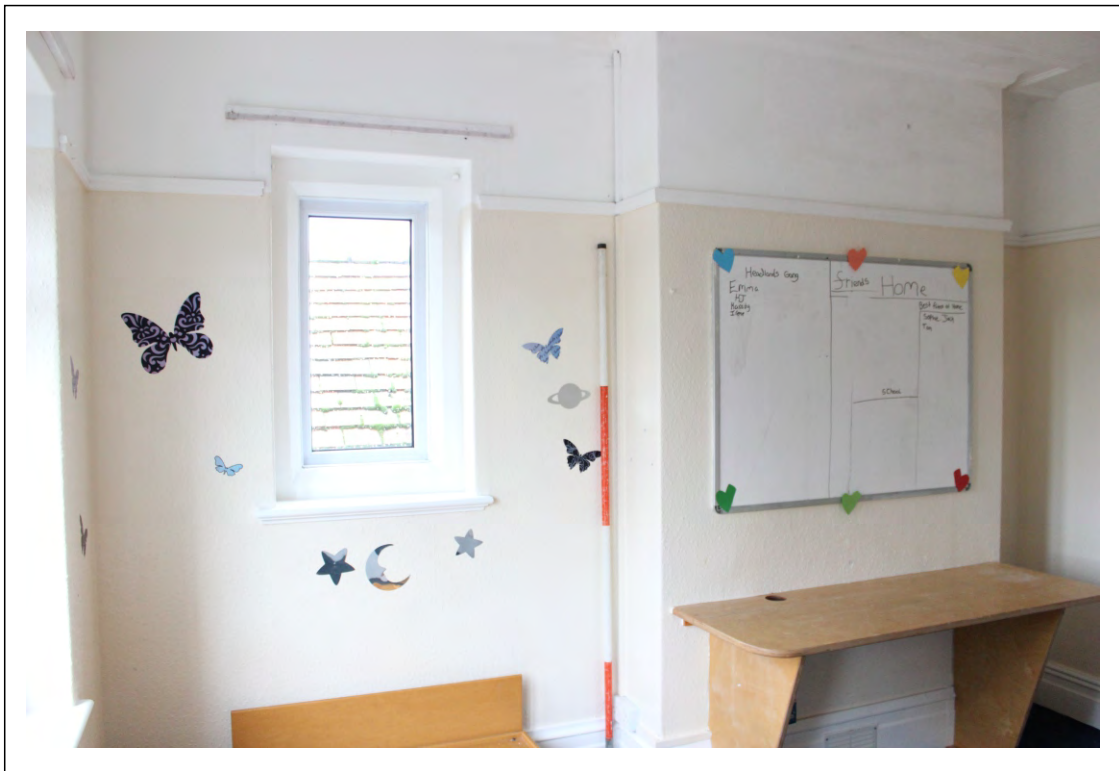


Plate 55: View south-east, showing main first floor bedroom blocked fireplace



Plate 56: View south-west, showing first floor games room bay windows



Plate 57: View north-east, showing first floor games room blocked doorway



Plate 58: View south-east, showing first floor games room blocked fireplace and window



Plate 59: View north-west, showing first floor northern bay window room, blocked fireplace

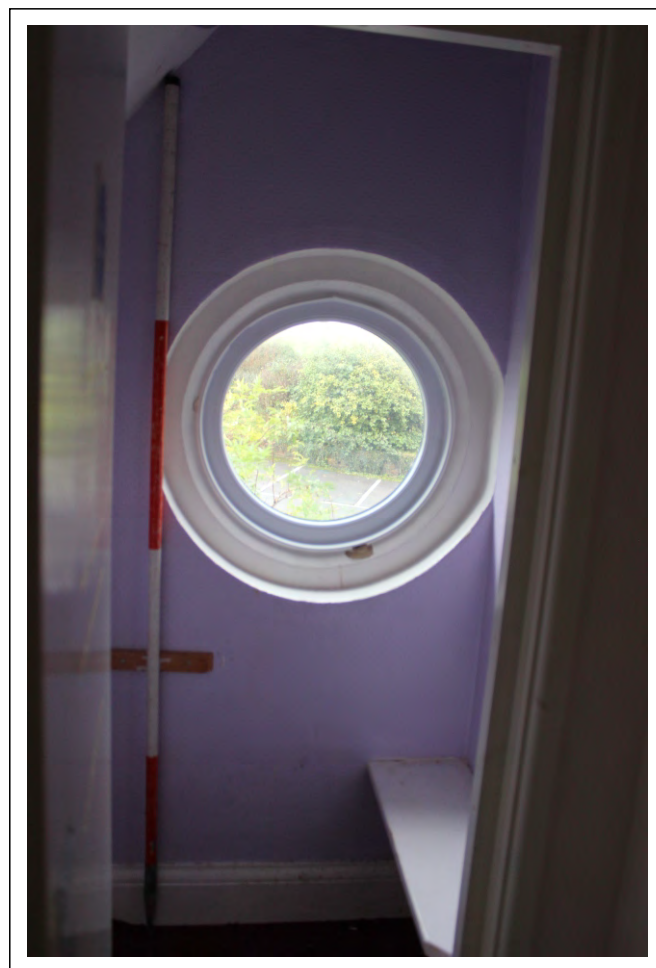


Plate 60: View north-east, showing first floor phone room



Plate 61: View north-west, showing first floor north wing corridor



Plate 62: View east, showing first floor north wing corridor skylights and cupboard



Plate 63: View south-west, first floor north wing bedroom with gabled dormer window



Plate 64: View south-west, showing first floor north wing modern bathroom unit with gabled dormer window



Plate 65: View north-west, showing first floor end bedroom with gabled dormer window



Plate 66: View south-east, showing first floor north wing end bedroom



Plate 67: View south-west, showing first floor north wing end bedroom



Plate 68: View south-east, showing first floor south wing end bedroom with gabled dormer window

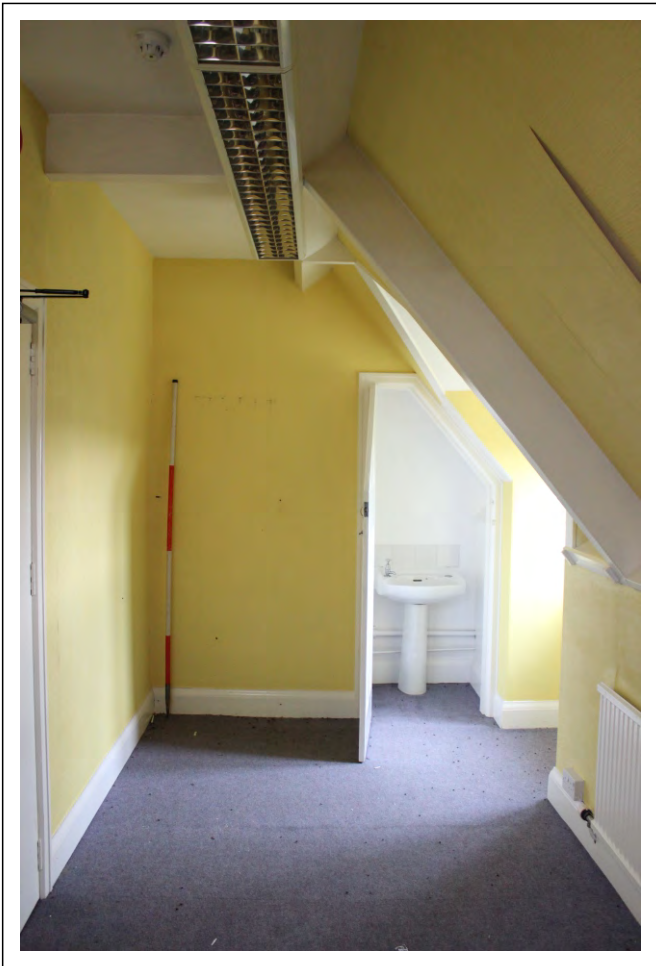


Plate 69: View south-east, showing second floor northern room



Plate 70: View south-west, second floor northern room gabled dormer window

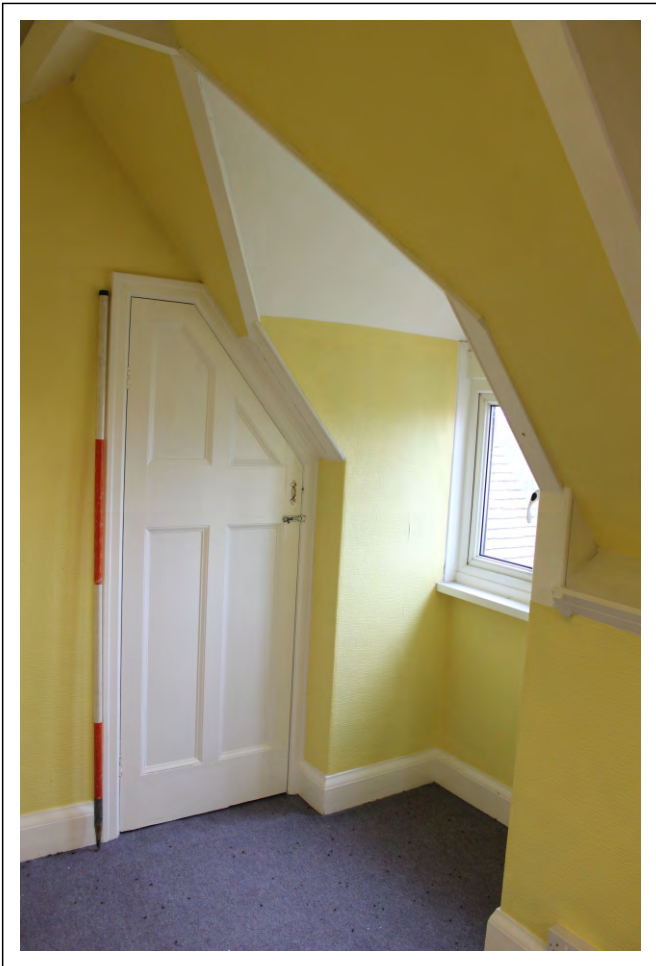


Plate 71: View south, showing second floor northern room



Plate 72: View north-west, showing second floor northern room



Plate 73: View north-west, showing second floor northern room fireplace



Plate 74: View south-east, showing second floor southern room



Plate 75: View south-east, showing second floor southern room



Plate 76: View south-east, showing second floor southern room fireplace



Plate 77: View south-east, showing second floor southern room fireplace



Plate 78: View north-west, second floor southern room

Archaeology Wales

APPENDIX III:

AW Specification

ARCHAEOLOGY WALES LIMITED:

Specification

For Level 3
Archaeological Building Recording

Ardwyn, Dinas Powys,
Vale of Glamorgan

Prepared for:
Waterstone Homes

Project No: 2288

07 November 2014

Archaeology Wales Limited
Rhos Helyg, CwmBelan, Llanidloes, Powys, SY18 6QF
Tel: +44 (0) 1686 440371
Email: admin@arch-wales.co.uk

NON TECHNICAL SUMMARY

This Written Scheme of Investigations details a proposal for Level 3 archaeological building recording in advance of the proposed demolition of existing buildings, construction of 17 dwellings and associated works at Ardwyn, Pen Y Turnpike Road, Dinas Powys (Pl. App. No.: 2014/00167/FUL). It has been prepared by Archaeology Wales Ltd for Waterstone Homes Limited.

1. Introduction

The proposed demolition of existing buildings, construction of 17 dwellings and associated works is at Ardwyn, Pen Y Turnpike Road, Dinas Powys (henceforth – the site). The building recording work will be carried out to English Heritage Level 3 standards prior to the commencement of on-site works.

The work has been recommended by the Glamorgan Gwent Archaeological Trust (GGAT) in their capacity as archaeological advisors to The Vale of Glamorgan Council (GGAT ref: VOG1070/JBHD). GGAT are of the opinion that the Children's home is of historic importance and culturally significant within the area, and therefore a record should be made, both by the means of a drawn and photographic record, and a written description and history, prior to any demolition work commencing on site.

This Specification has been prepared by Mark Houliston (MIfA), Managing Director, Archaeology Wales Ltd (Henceforth - AW) at the request of Waterstone Homes Limited. It provides information on the methodology which will be employed by AW during the proposed Level 2 archaeological building recording.

The purpose of the proposed building recording is to produce a permanent and lasting digital and physical record of the structure to be demolished.

The work will be managed by Dr Iestyn Jones, Project Manager, and undertaken by Mr Louis Stafford. CVs are available on request. The work will be undertaken in accordance with the standards and guidelines of the Institute for Archaeologists. Archaeology Wales is a Registered Organisation with the Institute for Archaeologists.

2 Site specific objectives

The primary objective of the work will be to record all of the upstanding internal and external areas of the structure prior to demolition. This will be completed by means of an English Heritage Level 3 Building survey.

The work will result in a fully illustrated report, which will provide a comprehensive record of all the work undertaken. It will include interpretive statements and provide an assessment of the regional context within which the structural fabric rests.

The completed record will be deposited in the Historic Environment Record so that it can be accessed by future historians.

3 Building Survey

The survey will provide a comprehensive record to archive standard of the existing building, both externally and internally.

The following will be considered:

- Site layout and organisation
- Function
- Materials, method of construction
- Fenestration
- Internal arrangements
- Original fixtures and fittings
- Subsequent fixtures and fittings
- Evidence of use and status
- Date/period of initial build and subsequent alterations

The recording will be completed in accordance with IfA Standards and Guidance relating to the Investigation and Recording of Standing Buildings (Oct 2008) and to a standard equivalent to English Heritage Level 3 (English Heritage 'Understanding Historic Buildings: A Guide to Good Recording Practice' 2006).

All photographs will be taken in a high resolution (14+ Mega Pixel) digital format. For both general and specific photographs, a photographic scale shall be included. The photographic record shall be accompanied by a photographic register detailing as a minimum, feature number, location and direction of shot.

Existing architects plans and, wherever possible, elevations, will be used to supplement the report. Plans will be used to highlight photographic locations within the final report.

Monitoring

GGAT will be contacted at least one week prior to the commencement of site works, and subsequently once the work is underway.

Any changes to this Specification that AW may wish to make after approval will be communicated to GGAT for approval on behalf of the Planning Authority.

Representatives of GGAT will be given access to the site so that they may monitor the progress of the building recording. GGAT will be kept regularly informed about developments, both during the site works and subsequently during the post-fieldwork programme.

4 Post Field-work programme

Site archive

An ordered and integrated site archive will be prepared in accordance with: Management of Research Projects in the Historic Environment (MoRPHE) English Heritage 2006 upon completion of the project. The requirements for archive storage will be agreed with the appropriate organisation.

The archive including a copy of the written report shall be deposited with the appropriate organisation within two months of the completion of the full report and confirmed in writing with GGAT.

A summary of the contents of the archive will be supplied to GGAT.

Final reporting

A report will be submitted to GGAT for comments within 4 weeks of the survey being completed.

The report will contain, as a minimum, the following elements:

- A concise non-technical summary of the results
- The aims and methods adopted in the course of the investigation with details of how all the buildings and structures were surveyed and recorded
- A history of the site (including readily available historic maps)
- A written record of the building
- Location plans tied into the national grid showing the positions of all drawn and photographic records relating to the survey
- Conclusions as appropriate
- A statement of the local and regional context of the remains
- Bibliography
- A copy of the AW Specification

5 Resources and timetable

Standards

The field work will be undertaken by AW staff using current best practice.

Equipment

The project will use existing AW equipment.

Expected timetable of archaeological works

The building recording work is expected to take 3-4 days on site. A provisional start date of 11th November 2014 has been suggested.

Insurance

Archaeology Wales Limited (AW) is an affiliated member of the CBA, and holds Insurance through the CBA insurance service.

Health and safety

All members of staff will adhere to the requirements of the *Health & Safety at Work Act, 1974*, and the AW Health and Safety Policy.

If AW has sole possession of the site, then AW will produce a detailed Risk Assessment for approval by the client before any work is undertaken. If another organisation has responsibility for site safety, then AW employees will be briefed on the contents of all existing Risk Assessments, and all other health and safety requirements that may be in place.

Bibliography:

English Heritage. 2006. *Understanding Historic Buildings. A guide to good recording practice.*

Institute for Archaeologists. 2008. *Standard and guidance for the archaeological*

investigation and recording of standing buildings or structures

Archaeology Wales

APPENDIX IV:

Archive Cover Sheet

ARCHIVE COVER SHEET

Ardwyn, Dinas Powys

| | |
|---------------------------------|--------------------|
| Site Name: | Ardwyn |
| Site Code: | ADP/14/BR |
| PRN: | - |
| NPRN: | 418870 |
| SAM: | - |
| Other Ref No: | - |
| NGR: | NGR ST 15601 71749 |
| Site Type: | Building |
| Project Type: | Building Recording |
| Project Manager: | Iestyn Jones |
| Project Dates: | November 2014 |
| Categories Present: | Modern |
| Location of Original Archive: | AW |
| Location of duplicate Archives: | RCAHMW |
| Number of Finds Boxes: | NA |
| Location of Finds: | NA |
| Museum Reference: | NA |
| Copyright: | AW |
| Restrictions to access: | None |

Archaeology Wales



Archaeology Wales Limited

Rhos Helyg, Cwm Belan, Llanidloes, Powys SY18 6QF

Tel: +44 (0) 1686 440371

Email: admin@arch-wales.co.uk

Company Directors: Mark Houlston MIFA & Jill Houlston

Company Registered No. 7440770 (England & Wales).

Registered office: Morgan Griffiths LLP, Cross Chambers,
9 High Street, Newtown, Powys, SY16 2NY