

**Historic Environment
Desk-Based Assessment For
Potential Development on Land
Adjacent to the Oldford Estate,
Welshpool, SY21 7TE**



Report by: Trysor

For: Powys County Council

October 2022
Revised 08/12/2022



Historic Environment Desk-Based Assessment For Potential Development on Land Adjacent to the Oldford Estate, Welshpool, SY21 7TE

By

Jenny Hall, MCIfA & Paul Sambrook, MCIfA
Trysor

Trysor Project No. 2022/848
CPAT HER Event Record PRN 167123

For: Powys County Council

October 2022
Revised 08/12/2022

38, New Road
Gwaun-cae-Gurwen
Ammanford
Carmarthenshire
SA18 1UN

www.trysor.net
enquiries@trysor.net



Cover photograph: A view looking north-northeast across the feasibility area

**Historic Environment Desk-Based Assessment For
Potential Development on Land Adjacent to the
Oldford Estate, Welshpool, SY21 7TE**

RHIF YR ADRODDIAD - REPORT NUMBER: Trysor 2022/848
EVENT RECORD HER PRN – CPAT 167123

DYDDIAD 21^{ain} Mis Hydref 2022 **DATE** 21st October 2022
Diwygiedig 8^{fed} mis Rhagfyr Revised 8th December 2022

Paratowyd yr adroddiad hwn gan bartneriad Trysor. Mae wedi ei gael yn gywir ac yn derbyn ein sêl bendith.

This report was prepared by the Trysor partners. It has been checked and received our approval.

JENNY HALL MCIFA *Jenny Hall*

PAUL SAMBROOK MCIFA *Paul Sambrook*

Croesawn unrhyw sylwadau ar gynnwys neu strwythur yr adroddiad hwn.

We welcome any comments on the content or structure of this report.

*38, New Road,
Gwaun-cae-Gurwen
Ammanford
Carmarthenshire
SA18 1UN
01269 826397*

*82, Henfaes Road
Tonna
Neath
SA11 3EX
01639 412708*

www.trysor.net

enquiries@trysor.net

Trysor is a Registered Organisation with the Chartered Institute for Archaeologists and both partners are Members of the Chartered Institute for Archaeologists, www.archaeologists.net

Jenny Hall (BSc Joint Hons., Geology and Archaeology, MCIfA) had 12 years excavation experience, which included undertaking watching briefs prior to becoming the Sites and Monuments Record Manager for a Welsh Archaeological Trust for 10 years. She has been an independent archaeologist since 2004 undertaking a variety of work that includes upland survey, desk-based appraisals and assessments, and watching briefs.

Paul Sambrook (BA Joint Hons., Archaeology and Welsh, MCIfA, PGCE) has extensive experience as a fieldworker in Wales. He was involved with Cadw's pan-Wales Deserted Rural Settlements Project for 7 years. He has been an independent archaeologist since 2004 undertaking a variety of work including upland survey, desk-based appraisals and assessments, and watching briefs.

CPAT	Clwyd Powys Archaeological Trust
HER	Historic Environment Record
ID Number	A unique number used within this report to identify historic assets. Cross-references to other numbers such as PRNs, NPRNs and Designations are given in a site gazetteer in the Appendices.
NPRN	National Primary Record Number in National Monument Record held by the RCAHMW
PRN	Primary Record Number in regional HER held by Clwyd Powys Archaeological Trust

Date of Revision	Reason	Corrections Made	Requested By
08/12/2022	Image of manipulated LiDAR requested	Image added as Figure 2, all Figures thereafter renumbered including the references in text, content page numbers renumbered accordingly	Mark Walters, CPAT
08/12/2022	Wrong caption on Figure 8 (revised numbering)	Caption for Figure 8 altered	Trysor

Event Record PRN – CPAT HER

PRN	CPAT 167123
Name	LAND ADJACENT TO OLDFORD, WELSHPOOL DESK BASED ASSESSMENT
Type	DESK BASED ASSESSMENT
NGR	SJ2228007132
Easting	322280
Northing	307132
Summary (English)	In 2022 Trysor undertook a desk-based assessment for a potential social housing development by Powys County Council on land adjacent to the Oldford Estate, Welshpool at SJ2228007132. © Trysor 2022
Crynodeb (Cymraeg)	Yn 2022 cynhaliodd Trysor asesiad pen desg ar gyfer datblygiad tai cymdeithasol posibl gan Gyngor Sir Powys ar dir gerllaw Ystâd Oldford, Y Trallwng yn SJ2228007132© Trysor 2022
Description	In 2022 Trysor undertook a desk-based assessment for a potential social housing development by Powys County Council on land adjacent to the Oldford Estate, Welshpool at SJ2228007132. © Trysor 2022
Sources	Trysor, 2022, <i>Historic Environment Desk-Based Assessment For Potential Development on Land Adjacent to the Oldford Estate, Welshpool, SY21 7TE</i>
Copyright	© Trysor 2022

Historic Asset Record PRN – CPAT HER

PRN	CPAT 167129
Name	MAES Y FELIN WYNT, CULTIVATION RIDGES
Type	CULTIVATION RIDGES
NGR	SJ2234307157
Easting	322343
Northing	307157
Summary (English)	A small area of ridge and furrow cultivation is visible on LiDAR images in the Powis Castle estate parkland immediately south of the former Oldford Infant School, now the Welshpool Integrated Family Centre, Welshpool. The broad ridges run roughly north to south and cover an area measuring some 0.35 hectares in extent but are not recognisable in the field. © Trysor 2022
Crynodeb (Cymraeg)	Mae olion aredig hynafol i'w gweld ar ddelweddau LiDAR mewn darn bach o dir ym mharcdir ystad Castell Powis, yn union i'r de o hen Ysgol Fabanod Oldford, sydd bellach yn Ganolfan Deuluol Integredig y Trallwng. Mae'r cwysi llydan yn rhedeg o'r gogledd i'r de dros ardal sy'n mesur tua 0.35 hectar, ond nid ydynt yn amlwg ar wyneb y tir. © Trysor 2022
Description	A small area of ridge and furrow cultivation is visible on LiDAR images in the Powis Castle estate parkland immediately south of the former Oldford Infant School, now the Welshpool Integrated Family Centre, Welshpool. The broad ridges run roughly north to south and cover an area measuring some 0.35 hectares in extent but are not recognisable in the field. © Trysor 2022
Sources	Trysor, 2022, <i>Historic Environment Desk-Based Assessment For Potential Development on Land Adjacent to the Oldford Estate, Welshpool, SY21 7TE</i>
Copyright	© Trysor 2022

PRN	CPAT 167130
Name	OLDFORD, BANK (EARTHWORK)
Type	BANK (EARTHWORK)
NGR	SJ2231507090
Easting	322315
Northing	307090
Summary (English)	A linear feature is seen on LiDAR images running generally from northeast to southwest in the parkland to the west of the Oldford housing estate. It cuts across other features in the landscape and appears to represent a surviving section of a field boundary shown on the parish tithe map of 1840, which divides field parcel 794 to the east from parcels 821, 822 and 824 to the west. © Trysor 2022
Crynodeb (Cymraeg)	Gwelir nodwedd linellol ar ddelweddau LiDAR sy'n rhedeg yn gyffredinol o'r gogledd-ddwyrain i'r de-orllewin ym mharccdir Castell Powis, i'r gorllewin o ystâd dai Oldford. Mae'n torri ar draws nodweddion eraill yn y dirwedd ac ymddengys ei bod yn cynrychioli rhan o hen glawdd a ddangosir ar fap degwm y plwyf yn 1840, yn rhannu caeau rhif 794 i'r dwyrain a chaeau 821, 822 a 824 i'r gorllewin. © Trysor 2022
Description	A linear feature is seen on LiDAR images running generally from northeast to southwest in the parkland to the west of the Oldford housing estate. It cuts across other features in the landscape and appears to represent a surviving section of a field boundary shown on the parish tithe map of 1840, which divides field parcel 794 to the east from parcels 821, 822 and 824 to the west. © Trysor 2022
Sources	Trysor, 2022, <i>Historic Environment Desk-Based Assessment For Potential Development on Land Adjacent to the Oldford Estate, Welshpool, SY21 7TE</i>
Copyright	© Trysor 2022

PRN	CPAT 215524
Name	POWIS CASTLE ESTATE, AVENUE
Type	AVENUE
NGR	SJ2220407021
Easting	322204
Northing	307021
Summary (English)	A roadway which connected Powis Castle to Welshpool town is shown clearly on Humphrey Bleaze's estate map of the Powis Castle demesne dating to 1629. The southern part of this road is depicted as a long, straight avenue, with paired trees along its course. In the modern landscape the avenue is barely discernable on the ground, though the roadway to the north of the avenue survives as a holloway. The transition from the holloway to the avenue was located at SJ2224207091. © Trysor 2022
Crynodeb (Cymraeg)	Mae ffordd a gysylltodd Gastell Powis â thref y Trallwng i'w gweld yn glir ar fap ystad Humphrey Bleaze o ddemên Castell Powis yn dyddio o 1629. Darlunnir rhan ddeheuol y ffordd hon fel rhodfa hir, syth, gyda phàrau o goed ar hyd ei chwrs. Ychydig o olion o'r rhodfa sydd i'w gweld yn y tirwedd modern, er bod yr hen heol i'r gogledd o'r rhodfa wedi goroesi fel ffordd suddedig sydd amlwg yn croesi'r parcdir. Mae'r ffordd suddedig yn newid i'r rhodfa yn SJ2224207091. © Trysor 2022
Description	© Trysor 2022
Sources	Trysor, 2022, <i>Historic Environment Desk-Based Assessment For Potential Development on Land Adjacent to the Oldford Estate, Welshpool, SY21 7TE</i>
Copyright	© Trysor 2022

PRN	CPAT 215525
Name	MAES Y CASTLE, BANK (EARTHWORK)
Type	BANK (EARTHWORK)
NGR	SJ2220107111
Easting	322201
Northing	307111
Summary (English)	A denuded earthwork boundary bank runs west-northwest to east-southeast across this area of parkland at the northeastern corner of the Powis Castle estate. It appears to correspond with a field boundary shown on the 1629 estate map drawn by Humphrey Bleaze and the 1840 parish tithe map, which ran from the Llyndu pool up to the higher ground occupied by a small woodland divided between two fields (parcel numbers 822 and 824 on the tithe map). LiDAR imagery suggests that the boundary may in fact be divided into two parts by a roadway connecting Welshpool and Powis Castle, which appears on the Bleaze map and which is still visible as an earthwork in the field. © Trysor 2022
Crynodeb (Cymraeg)	Mae olion hen glawdd i'w weld yn rhedeg o'r gorllewin o'r gogledd-orllewin i'r dwyrain-de-ddwyrain ar draws yr ardal hon o barcdir yng nghornel ogledd-ddwyrain ystad Castell Powis. Ymddengys ei fod yn cyfateb â chlawdd a ddangosir ar fap ystad a dynnwyd gan Humphrey Bleaze yn 1629a map degwm y plwyf, 1840. Roedd yn rhedeg o bwll Llyndu hyd y goetir bychan ar dir uchel i'r dwyrain, wedi'i rannu i mewn i ddau gae gan y clawdd (caeau 822 ac 824 ar fap y degwm). Mae delweddau LiDAR yn awgrymu y gallai'r ffin gael ei rannu'n ddwy ran mewn gwirionedd gan yr hen heol oedd yn cysylltu'r Trallwng a Chastell Powis, sy'n ymddangos ar fap Bleaze ac sydd i'w weld o hyd fel gwrthglawdd yn y parcdir. © Trysor 2022
Description	A denuded earthwork boundary bank runs west-northwest to east-southeast across this area of parkland at the northeastern corner of the Powis Castle estate. It appears to correspond with a field boundary shown on the 1629 estate map drawn by Humphrey Bleaze and the 1840 parish tithe map, which ran from the Llyndu pool up to the higher ground occupied by a small woodland divided between two fields (parcel numbers 822 and 824 on the tithe map). LiDAR imagery suggests that the boundary may in fact be divided into two parts by a roadway connecting Welshpool and Powis Castle, which appears on

	the Bleaze map and which is still visible as an earthwork in the field. © Trysor 2022
Sources	Trysor, 2022, <i>Historic Environment Desk-Based Assessment For Potential Development on Land Adjacent to the Oldford Estate, Welshpool, SY21 7TE</i>
Copyright	© Trysor 2022

Contents

1. Summary	1
2. Copyright	2
3. Introduction	2
4. The Development	4
5. Methodology	4
6. The Feasibility Area	6
7. Archaeological Overview	8
8. Historical Overview	10
9. Data Collation	16
10. Assessment of Significance	18
11. Assessment of Impact	22
12. Conclusion	30
13. Reporting	31
14. References	31
15. Reliability and limitations of sources	32
Appendix A: Gazetteer of historic assets within 400 metres	36
Appendix B: Photographs	90
Appendix C: Written Scheme of Investigation	106

1. Summary

- 1.1 This historic environment assessment has been undertaken by Trysor to examine potential impacts on the historic environment if a social housing development was located on land adjacent to the Oldford Estate, Welshpool at SJ2228007132.
- 1.2 Site visit were undertaken on 15th July and 9th October 2022 by Trysor to examine the area and its surroundings.
- 1.3 The assessment considered the impact on the all recorded historic assets within a 400-metre area centred on SJ2228007132.
 - 1.3.1 Recorded historic assets earlier than the post medieval period within a 1200 metres radius centred on SN2228007132 were also considered.
- 1.4 After initial assessment it was considered that only a limited part of the overall feasibility area was potentially suitable for future development. The remainder of the feasibility area has multiple heritage issues including extant archaeological earthworks and high potential for buried archaeology, loss of historic parkland including mature trees and intrusion into the setting of designated historic assets and is not considered suitable for development. In this document the original 6.7 hectares is referred to as the "feasibility area" and the much smaller area, 0.17 hectares, considered possible for development as the "potential development site".
 - 1.4.1 Additional historic assets which required consideration under Cadw guidelines (Cadw, 2017, p.11) and were not already included in the datasets outline in 1.3 and 1.3.1 were designated post-medieval historic assets within a radius of between 400 metres and 500 metres from the potential development site. This would only include buildings at the heart of Welshpool town which would not be intervisible with the potential development site and they would not experience direct or indirect impacts or any impacts on setting from a modest development there.
- 1.5 The Clwyd Powys Historic Environment Record and data from RCAHMW and Cadw were consulted. Historical mapping was used as well as aerial photographs and LiDAR data.
- 1.6 There are no Scheduled Monuments within a 400-metre radius of the centre of the feasibility area. Two Scheduled Monuments are found within a 1200 metre radius. There would be no impacts on either of these Scheduled Monuments from a modest development at the potential development site.
- 1.7 There are 14 Listed Buildings within the 400 assessment area. 212 Listed Buildings are found within a radius between 400 metres and 1200 metres. Although a small number may have partial intervisibility with

the feasibility site (e.g. St. Mary's Church, PRN 5504), none would have any intervisibility with the potential development site nor would they experience any impacts from a modest development there.

- 1.8 There are two Registered Parks and Gardens within the 1200 metre radius of the development (Powis Castle Gardens - PWG (Po35) - and Llanerchydol - PWG (Po36). The site lies within the historical area of the parkland of Powis Castle, but the parkland is not included within the Register of Historic Parks and Gardens. A modest development in the potential development area would not be intervisible with either Registered Park and Garden.
- 1.9 The assessment identified potential direct and indirect impacts on the historic parkland associated with Powis Castle, within which the feasibility area lies. Further potential impacts have also been noted in relation to a number of historic assets found within the feasibility area and in relatively close proximity to the potential development area
- 1.10 In view of the presence of the historic parkland and its importance to the setting of Powis Castle and its high landscape value, as well as the proximity of several historic assets within the field, this assessment has found that these act as limiting factors and should preclude any development within the field in question, the feasibility area, with the exception of a small area at the northeastern corner of the field, the potential development area.

2. Copyright

- 2.1 Trysor holds the copyright of this report. Further copies may be made of this report without gaining permission to reproduce for non-commercial purposes but it must be noted that Figures 3, 8 and 13 include other copyrighted material and should not be copied.

3. Introduction

- 3.1 Louise Evans, Senior Planning Coordinator at Powys County Council has commissioned Trysor heritage consultants to undertake an historic environment desk-based assessment, including a potential impact on setting of designated historic assets, as part of the scoping process for a potential development at SJ2228007132 on land adjacent to the Oldford Estate, Welshpool, SY21 7TE.
- 3.2 A planning application has not yet been submitted.
- 3.3 A Written Scheme of Investigation (WSI) was prepared (Trysor, 2022) guided by the Chartered Institute for Archaeologists' Standard and Guidance for Historic Environment Desk-based Assessment (CIfA, 2020). The WSI was approved by the planning archaeologist at the Clwyd-Powys Archaeological Trust.

Historic Environment Desk-Based Assessment For Potential Development on Land Adjacent to the Oldford Estate, Welshpool, SY21 7TE

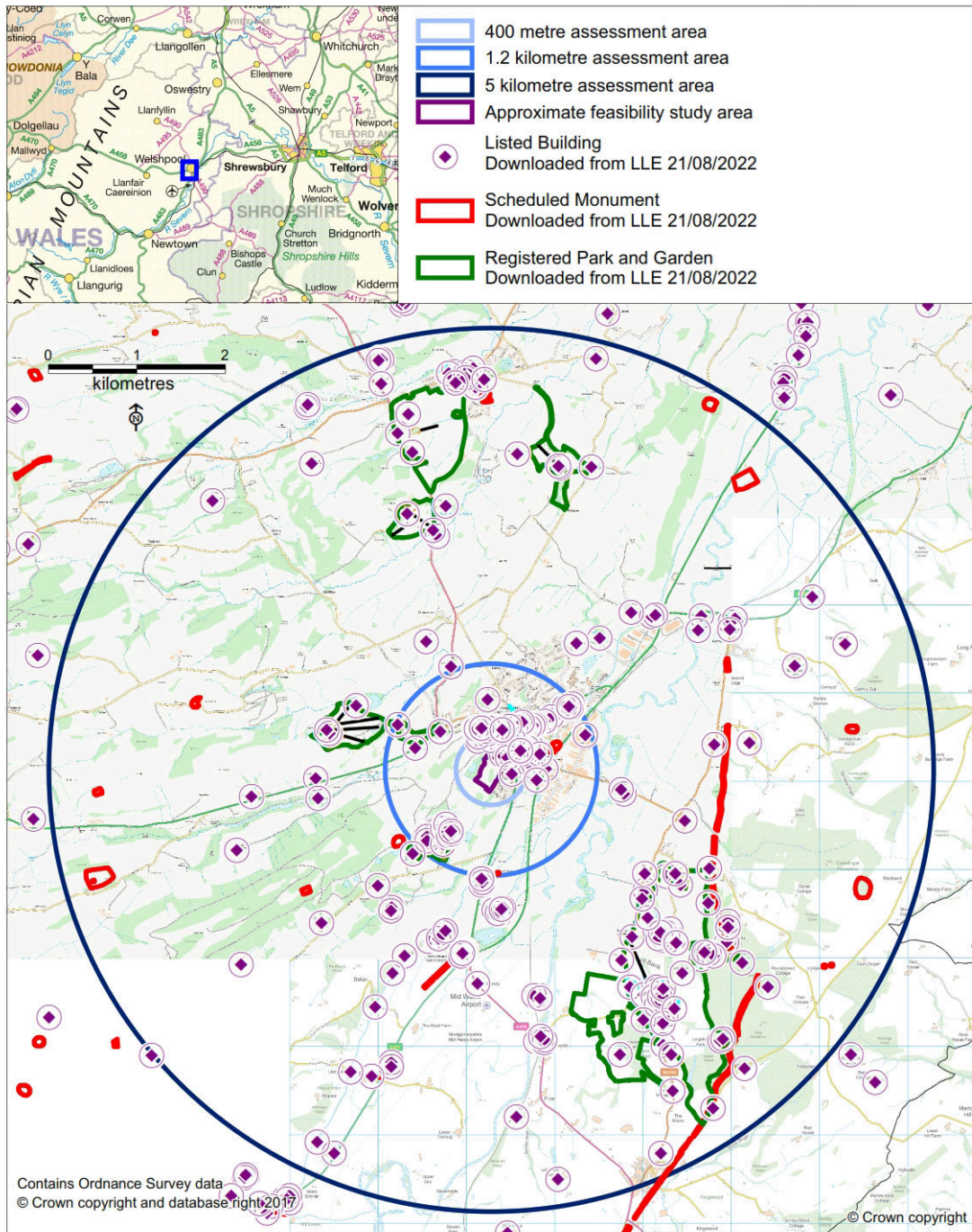


Figure 1: Location of the feasibility area, showing the agreed 400 metre radius and 1200 metre radius assessment areas.

4. The Development

4.1 This assessment has been prepared as part of a scoping process for a potential development centred on SJ2228007132 on land adjacent to the Oldford Estate, Welshpool, SY21 7TE. No specific proposals have been devised as to the extent or character of any future development at the site. The assessment merely tests the suitability of the land, from a heritage standpoint, for development.

5. Methodology

- 5.1 The desk-based assessment has considered known historic assets within a 400-metre radius circle centred on SJ2228007132. An assessment was also undertaken on non-Post Medieval historic assets between a radius of 400 metres and 1200 metres to further inform the character of the local archaeological and heritage resource. These areas were agreed within the Written Scheme of Investigation, see Appendix C and Figure 1.
- 5.2 The desk-based assessment process has helped develop an understanding of the archaeology and landscape of the surrounding area, and to assess any direct or indirect impacts. Historic assets within the 400 metres assessment area have been given a project ID number for the purposes of this report; other reference numbers are cross referenced in Appendix A. Records outside this 400 metre assessment area are given their PRN (HER identifier) or their designated identifier.
- 5.3 Data from the regional Historic Environment Record held by the Clwyd-Powys Archaeological Trust was acquired to inform the assessment.
- 5.4 Historic mapping was consulted. The maps used included the early 19th century Ordnance Survey Original Surveyors Drawings, as well as late 19th and 20th century 1:2500 scale Ordnance Survey mapping, the parish tithe map and a 17th century estate map.
- 5.5 Field visits were made by Trysor to the feasibility area, and the surrounding district, on 15th July and 9th October 2022. Visible archaeological features within the area that would be directly affected by the development were searched for and any other historic assets on which there may be a direct impact recorded.
- 5.6 Aerial photographs on Google Earth were used to inform the assessment as well as LiDAR data at 1 metre resolution.
- 5.7 All information gathered during the desktop assessment and site visits was entered into a bespoke database created in Access 2003 to form an assessment dataset.
- 5.8 The final dataset is the source of the material output in this report, including the GIS mapping which illustrates the location of historic assets in the area, and the tables and appendices which provide information on the historic assets within the study area.

- 5.9 Where relevant, the records in the 400-metre assessment area were assessed for Period, Rarity, Documentation, Group Value, Survival/Condition, Fragility/Vulnerability, Diversity, and Potential¹, as well as Evidential Value, Historical Value, Aesthetic Value, Communal Value². Once these had been considered the significance of each historic asset was determined and scored in accordance with the categories adopted by the Welsh Archaeological Trusts i.e. Nationally Important, Regionally Important, Locally Important, Minor and Features Needing Further Investigation (Unknown), see Figure 8. Full details of this exercise are given in Appendix A.
- 5.10 The potential Direct and Indirect impact on each historic asset was assessed taking into account both physical and non-physical impacts. Levels of impact are recorded using the terms None, Very Low, Low, Medium, High or Very High. An impact can be negative or positive. Where impacts have approximately equivalent positive and negative values, the term Neutral is used.
- 5.11 The initial assessment was based on the 6.7 hectares of the feasibility area centred on SJ2228007132. A number of historic environment constraints on a development were quickly identified and a reassessment undertaken of a smaller potential development site within the feasibility area was undertaken. The smaller potential development site in the northeast corner of the feasibility area measures 0.17 hectares in area (see Figures 2 & 3).
- 5.11.1 The assessment of impact in this report is therefore based on the smaller potential development site not the larger feasibility area.

¹ Period, Rarity, Documentation and Group Value are criteria defined in Technical Advice Note 24: The Historic Environment, 2017, p. 34-35.

² Evidential Value, Historical Value, Aesthetic Value and Communal Value are criteria defined in Cadw's Conservation Principles publication, 2011.

6. The Feasibility Area

- 6.1 The feasibility area is centred on SJ2228007132 within an area of former estate parkland at the southern side of Welshpool town, see Figure 3. The site is now a pasture field which includes a west-facing valley slope in its western side, rising up to the low ridge, which runs north-northeast to south-southwest. Mature parkland trees are concentrated along the ridge top. To the west and south is the extensive Powis Castle parkland, to the east is the modern Oldford housing estate and Welshpool town lies to the north. The field is publicly accessible and popular with local walkers.
- 6.1.1 The geology of the development area comprises of sedimentary rocks of the Silurian Period dating to between 433.4 million and 423.6 million years ago. These include mudstone, siltstone and sandstone of the Nantglyn Flags Formation.
- 6.1.2 The soils here are categorised as *freely draining slightly acid loamy soils* on the LandIS soil map (Cranfield University, 2019). Soils of this type are of low fertility and characteristic of neutral and acid pastures and deciduous woodlands.
- 6.2 The smaller potential development site identified as possibly suitable for a modest development lies in a hollow at the north east corner of the feasibility area, see Figures 2 & 3.



*Figure 2: The initial feasibility area, with one manipulation of the 1 metre LiDAR data downloaded from Lle, the geoportal for Wales, showing earthwork features
<http://lle.gov.wales/Catalogue/Item/LidarCompositeDataset/?lang=en>
Contains Natural Resources Wales information © Natural Resources Wales and database right*

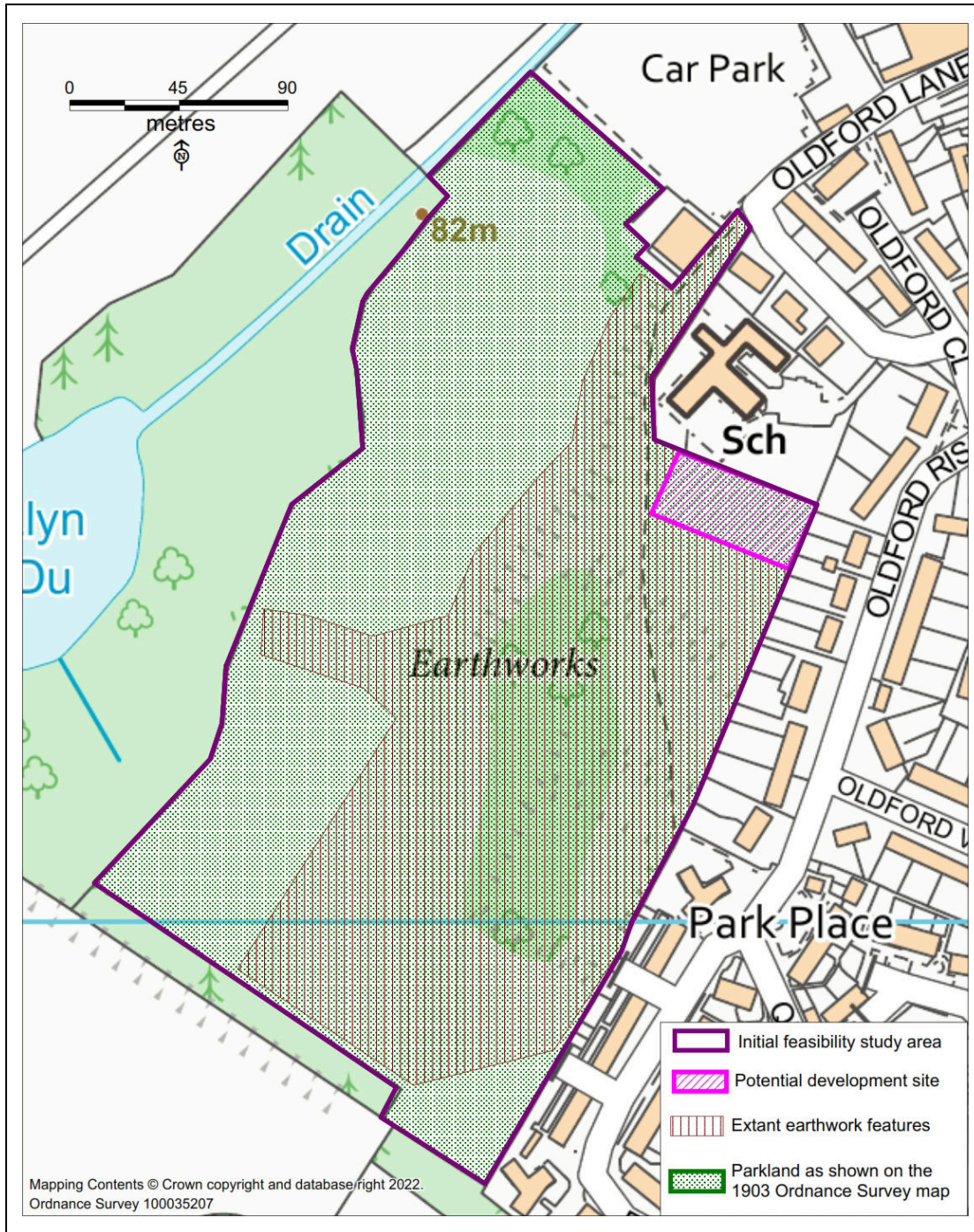


Figure 3: The initial feasibility area, the constraints from extant earthworks historic parkland and the identified potential development site in the northeast corner.

7. Archaeological Overview

7.1 Prehistory & Roman (Up to AD410)

- 7.1.1 There are no recorded archaeological sites or finds which predate the Bronze Age (c.2200BC to c.700BC) within a 1200 metre radius of the feasibility area.
- 7.1.2 The feasibility area lies on the flanks of a low ridge to the west of the broad Severn valley. The valley itself is notable for concentrations of Bronze Age funerary monuments along much of its length, including an important group in the vicinity of Coed y Dinas, over 2 kilometres to the south of Oldford. The nearest of these is the scheduled Whitehouse Bridge round barrow at Coed y Dinas (PRN 5026), 1.2 kilometres from the feasibility area.
- 7.1.3 A number of finds of Bronze Age artefacts have been recorded within the wider assessment area. A Bronze Age palstave axe-head and spearhead have been recorded from Welshpool (PRNs 70323 & 70324) whilst a hoard of three bronze looped socketed axe-heads was found at Cherrytree Bank, to the north of the town, almost 1.2 kilometres from the centre of the feasibility area (PRN 2192).
- 7.1.4 Such finds of artefacts and the presence of funerary monuments point to the presence of a Bronze Age community living and farming in the local landscape. There is presently no evidence to indicate where this community was focused, but it is likely that the fertile soils of the valley were exploited in prehistory.
- 7.1.5 There are no examples of late prehistoric monuments or findspots within the assessment area, although a number of Iron Age defended enclosures are present in the wider landscape around Welshpool. Such settlement sites are typical of the Iron Age (c. 700 BC - AD 43.) and reflect the fact that the period was dominated by a tribal society in which competition for land and resources led to tribal or clan-based conflict. Defended settlement sites may well have been occupied by clan leaders, but it is also possible that the local population would seek the protection of such defended sites during times of conflict. One of the closest is the Dysserth Enclosure (PRN 7111) just outside the 1.2 kilometre radius assessment area to the south of Oldford. These enclosures remind us that the local landscape was settled and farmed in late prehistory.
- 7.1.6 The larger hillforts of the Iron Age were put out of use after the Roman conquest of Britain in AD43. There is evidence that smaller forts and defended enclosures continued in use as farmsteads or enclosures into the Roman period (AD43-AD410). There is no evidence at present to suggest this occurred at any of the hillforts or defended enclosures in the Welshpool area, but there is good evidence of Roman activity in the area of the town and along the adjacent part of the Severn Valley. A number of finds of Roman coins from Welshpool itself (ID numbers 127 & 124)

indicate that there must have been settlement and trade here during the Roman period. A more significant discovery was that of what appears to be a high-status Roman burial uncovered at Smithfield, Welshpool in 1959 and excavated in 1960 (PRN 119). Although the burial itself wasn't found a large number of artefacts associated with a presumed grave were excavated. These included metal artefacts, pottery, textiles, wood and glass artefacts which are thought to date to the 2nd century AD. The nearest Roman fort is located at Forden Gaer (SAM No. MG012), 9 kilometres to the south of Oldford, but the discovery of Roman artefacts in the vicinity of Welshpool indicates that the influence of Roman administration was felt across the district.

7.2 Early Medieval & Medieval (AD410 to AD1536)

- 7.2.1 There is scant recorded evidence of activity dating to the Early Medieval period (AD410-AD1086) within the assessment area, although there is no doubt that the district was still settled throughout the early historic period. Offa's Dyke, one of Wales' most notable early medieval monuments, passes some 3 kilometres to the east of Oldford. One tradition has it that an early medieval *llys* or court site (PRN 142455) may have been focused on Welshpool, with the 12th century Welsh rulers of Powys thought to have had a base in the area. The site of Capel Llewellyn (PRN 4438), a medieval church site, is found in Welshpool town. It was first recorded in the 16th century but it has been suggested that it may have much earlier origins, dedicated perhaps to Llywelyn, brother of St. Cynfelyn. There is however no archaeological evidence supportive of either belief. 2km south of Oldford, near Coed y Dinas, a series of early medieval corn drying hearths were excavated in the later 20th century (PRN 43134) and provide concrete evidence of early medieval activity.
- 7.2.2 During the Medieval period, the Welshpool area was on the frontier with England and the site of Domen Castell, an early 12th century motte and bailey castle (scheduled monument MG019, PRN 120), is found within the town and is evidence of the defence prepared by the rulers of Powys. It is possible that the early town of Trallwng or Pool grew around this castle, with a borough and market established here by the mid-13th century, and a church (PRN 5504) and chapel (PRN 16970). At some point the earlier motte and bailey castle was abandoned and the focus of military power in the area moved to *y Castell Coch* or Powis Castle (PRN 123), to the south of the town. This castle was probably founded by circa 1200 and had developed into a strong stone fortification by the later 13th century. A deer park, (PRN 132479) was created in association with Powis Castle by later medieval times, which was a precursor to the later parkland which now surrounds the castle (ID number 49).

7.2.3 There is little visible evidence of medieval Welshpool now surviving in the town, some houses have been suggested to have medieval origins but their facades are usually later.

7.3 Post Medieval & Modern (1536 to present day)

7.3.1 Welshpool is now a large and busy post-medieval and modern town. Within the town, several early post-medieval buildings have survived which contribute significantly to the historic character of the town. Other recorded post-medieval archaeology within the assessment area is dominated by commercial and residential buildings associated with the growth of Welshpool during the 19th century, as well as features associated with the development of Powis Castle as a high-status gentry residence set in extensive gardens and parkland environment.

8. Historical Overview

8.1 The feasibility area is located within the historic parkland of Powis Castle. A rare 17th century estate map prepared for the Powis Castle estate in 1629 (Bleaze, 1629) shows the area of the proposed development in remarkable detail and identifies some features pertinent to the history of the landscape within the area, see Figure 3. This map shows the fields at the northeastern corner of the Powis Castle demesne, where the fields of Clos yr Hendy (The Field of the Old House) and Maes y Felin Wynt (Windmill Field) were separated by a roadway which linked Welshpool town to Powis Castle.

8.2 Much of Maes y Felin Wynt and the adjacent field of *Perlan Hulford* (Berllan Hulford/Oldford Orchard) have now disappeared beneath the Oldford residential estate. The line of the roadway dividing Clos yr Hendy from Maes y Felin Wynt can still be seen as a linear earthwork, ID number 4, running through the feasibility area however, representing an important relic of earlier times (see Plates 1, 5, 7 and 13). On the Bleaze map this line was continued southwestwards by a straight tree-lined avenue (ID number 53).



Figure 4: An excerpt of Humphrey Bleaze's map of 1629. The approximate coverage of the feasibility area corresponds with the field named Clos yr Hendy (Clos yr Hendy) and the upper half of Mais y Vellin wint (Maes y Felin Wynt). The approximate area of the feasibility area is outlined in purple.

- 8.3 The Ordnance Survey's Original Surveyors Drawing of 1817, shows the feasibility area had changed somewhat since 1629. There is by this time no clear evidence that the roadway through the area had remained in use and therefore it appears that Clos yr Hendy and Maes y Felin Wynt were considered by this time to be one field (see Figure 5).



Figure 4: The Ordnance Survey Original Surveyors Drawings of 1817 (Newtown Sheet) showing the approximate area of the feasibility area outlined in purple. The Llyndu pool is highlighted in blue.

- 8.4 The Pool parish tithe map of 1840 (see Figure 6) shows the feasibility area in detail. The field pattern is very different from that shown on Bleaze's estate map of 1629 and the field names have changed. The feasibility area includes parts of six parcels shown on the tithe map, all owned by the Earl of Powis and the Powis Castle estate, but occupied by tenants;

794 Old ford
821 Part of Quaker's Field
822 Wood in Quaker's Field
823 Part of Maes y Castle
824 Wood in Maes y Castle
825 Quaker's Field

- 8.4.1 This map shows that the roadway through the area which appears on the 1629 estate map only ran from Welshpool town to give access to field parcel 821, but did not continue further (ID number 4). In the modern landscape mature oaks which still grow on the high ground at the southern side of the proposed development area are undoubtedly remnants of the woods shown in Quaker's Field and Maes y Castle. The boundary between field parcels 794 and 823/825 is thought to be a feature seen on LiDAR data, ID number 52.

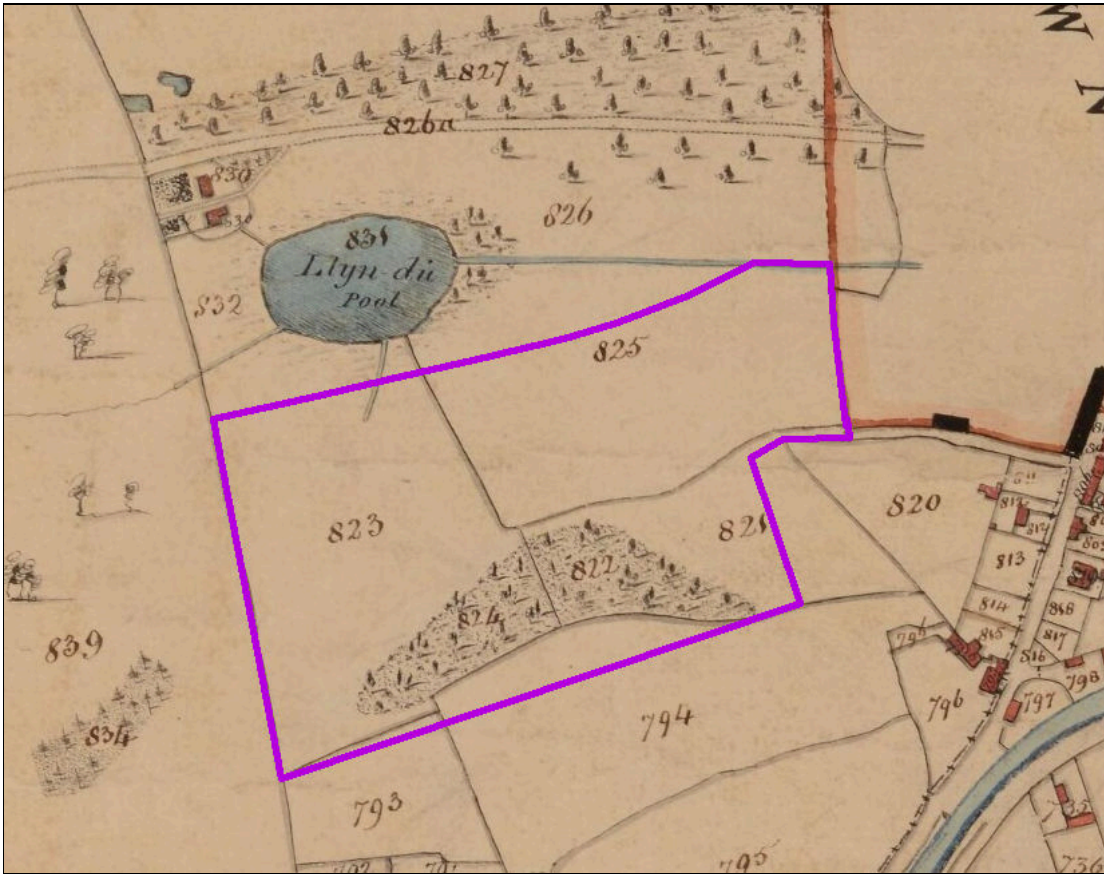


Figure 6: The Pool parish tithe map of 1840 showing the approximate feasibility area outlined in purple.

- 8.5 Late 19th and early 20th century Ordnance Survey maps again show the feasibility area in great detail and demonstrate further changes to the layout of field boundaries within the area (see Figure 7). The 1903 1:10560 scale Ordnance Survey map also shows the boundaries of the Powis Castle estate (shaded in grey), demonstrating that the feasibility area lay within the estate boundaries.

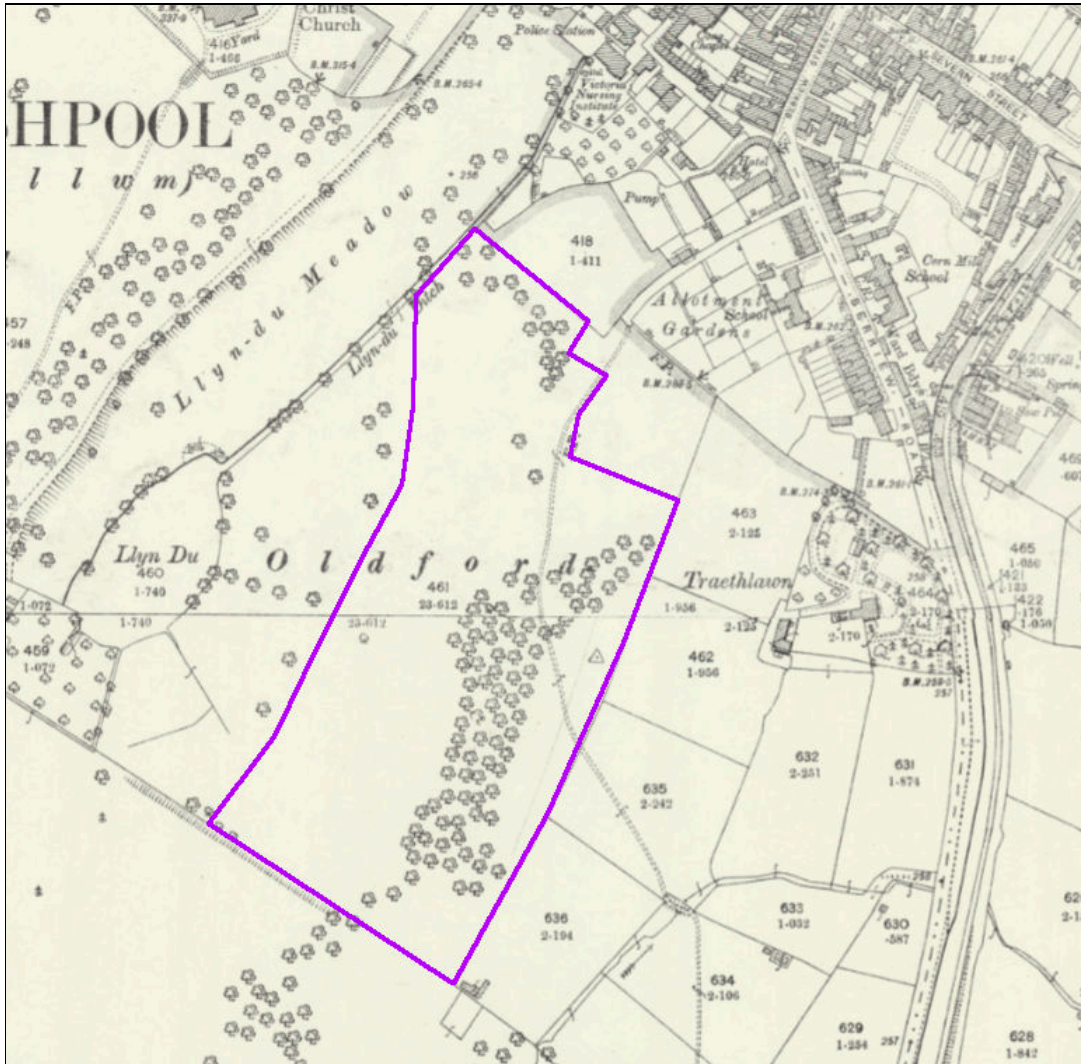


Figure 7; The 1903 1:2500 Ordnance Survey map showing the feasibility area outlined in purple.

- 8.6 Not all archaeological features recorded within the feasibility area are fully understood. Three records included in the regional Historic Environment Record are of particular interest in this context; the Maes Gwastad Platform (ID Number 2), Maes Gwastad Bank (ID number 3) and the Lord's Mill, the possible site of a windmill (PRN 37533).
- 8.6.1 The Maes Gwastad Platform (ID number 2) is a large, square, levelled area situated at the top of the low ridge found at the eastern edge of the feasibility area. The platform measures circa 55 metres square in area and is defined by low earthworks in the form of scrap slope and shallow ditch. Despite suggestions that this feature might be a Roman fortlet or a medieval fairground, its date and purpose are unknown. It has been suggested that it might be the site of a parade ground used by the local militia at Maes Gwastad in the late 19th century, but its absence from Ordnance Survey maps and the fact that boundary ID number 52, a boundary shown on the 1840 tithe map, cuts across it, suggests this is unlikely. The platform sits in the field known as Maes y Felin Wynt in 1629 or Quaker's Field in 1840 – Maes Gwastad lay further to the west. The platform may represent a parkland or garden feature associated with Powis Castle, such as a viewing platform, of early post-medieval date, but this too is speculative.
- 8.6.2 The eastern side of the feasibility area falls within the area of the former field known as Maes y Felin Wynt (Windmill Field) (ID number 37533). Although this has been interpreted as evidence that a windmill once stood here, in reality Maes y Felin Wynt originally extended much further to the east and the name only indicates that the field was associated with the windmill, it does not necessarily indicate that the windmill stood within it.
- 8.6.3 The broad, low earthwork bank known as Mae Gwastad Bank (ID number 3) may be associated with the Maes Gwastad Platform (ID number 2), though it is also possible that it is merely the remains of a long ploughed-out field boundary, most likely that shown dividing field parcels 822 and 824 on the parish tithe map (see Figure 6).

9. Data Collation

9.1 The HER enquiry for the 400 metre radius assessment area yielded 61 records for historic assets as point data.

9.2 After the walkover survey visit, the historic map search, LiDAR analysis and the rapid assessment of the readily available data the final dataset for the 400-metre radius assessment area contained 53 records for historic assets.

9.2.1 Twenty one records were removed from the dataset. These were

- Eight records where the location was not known or was too general to be assessed.
- Five records where the NGR was wrong and the record maybe a duplicate.
- Three records for findspots
- Three records for place names
- One duplicate record
- One general record for the town of Welshpool

9.2.2 Five new records were created, one for the parkland as shown on the 2nd edition Ordnance Survey map and four for earthwork features seen either on the ground or on LiDAR data within the feasibility area, see Figure 8.

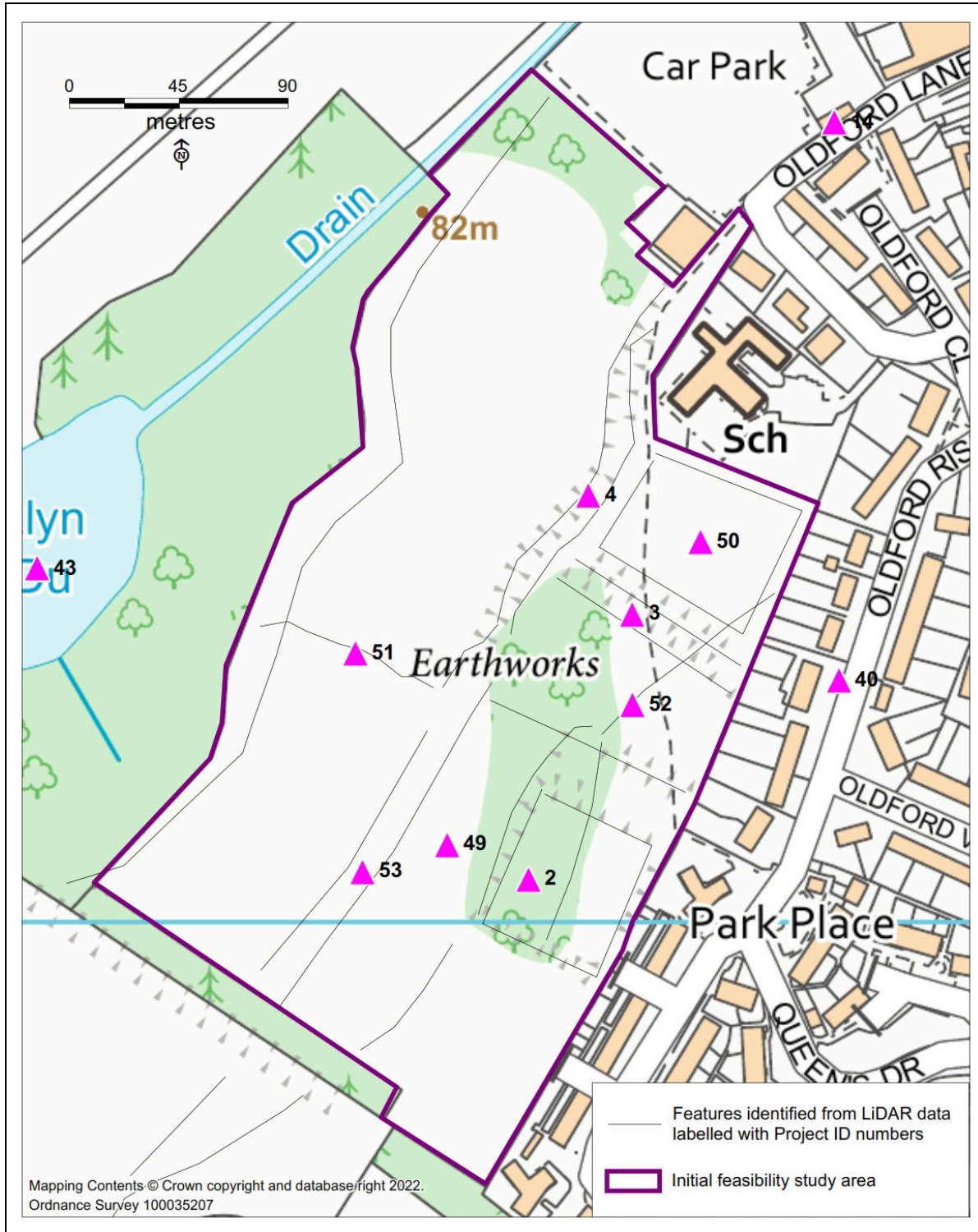


Figure 8: Location and project ID numbers for the earthwork features identified within the overall feasibility area.

10. Assessment of Significance

10.1 The significance of each historic asset was determined and scored in accordance with the glossary for Importance (Significance) categories for Wales i.e. International, National, Regional, Local, Minor, Not Recorded and Site Requiring Further Investigation (Unknown)³. Full details of this exercise are given in Appendix A and Figure 9 but Table 1 below summarises the assessed significance.

10.2 Within the 53 records in the 400-metre assessment area there were 12 Listed Buildings but no Scheduled Monuments or Registered Historic Parks and Gardens.

Project ID	Historic Asset Name	Historic Asset Type	Significance of Historic Asset	Status
7	WELSHPOOL, BERRIEW STREET 18-19	HOUSE	Nationally Important	Listed Building
8	WELSHPOOL, BERRIEW STREET, 'OLDFORD HOUSE'	HOUSE	Nationally Important	Listed Building
9	WELSHPOOL, BERRIEW STREET, 'NATIONAL SCHOOL'	SCHOOL	Nationally Important	Listed Building
10	WELSHPOOL CHURCH (CHRIST CHURCH)	CHURCH	Nationally Important	Listed Building
11	WELSHPOOL COCKPIT	COCKPIT	Nationally Important	Listed Building
12	WELSHPOOL, NEW ST CHAPEL (ENGLISH CONGREGATIONAL)	NONCONFORMIST CHAPEL	Nationally Important	Listed Building
13	WELSHPOOL, NEW STREET 'VICTORIA HOUSE'	HOUSE	Nationally Important	Listed Building
14	WELSHPOOL, OLDFORD LANE 'OLDFORD COTTAGE'	HOUSE	Nationally Important	Listed Building
15	POWIS CASTLE PARK, PARK LANE GATE PIERS AND GATES	GATEWAY	Nationally Important	Listed Building
16	POWIS CASTLE PARK, LODGE	LODGE	Nationally Important	Listed Building
17	WELSHPOOL, SEVERN STREET WELSHPOOL TOWN LOCK	CANAL LOCK	Nationally Important	Listed Building
18	WELSHPOOL, BERRIEW ROAD, FORMER GRAMMAR SCHOOL	SCHOOL	Nationally Important	Listed Building
19	WELSHPOOL, BERRIEW ROAD TRAETHLLAWN	HOUSE	Nationally Important	Listed Building
20	WELSHPOOL, BERRIEW STREET 19	HOUSE	Nationally Important	Listed Building

³ The glossary gives letter codes but in order to improve readability, the definition of each level of importance is given not the code, <https://heritagedata.org/live/schemes/14/concepts/508305.html>

*Historic Environment Desk-Based Assessment For
Potential Development on Land Adjacent to the
Oldford Estate, Welshpool, SY21 7TE*

Project ID	Historic Asset Name	Historic Asset Type	Significance of Historic Asset	Status
49	POWIS CASTLE ESTATE	PARKLAND	Nationally Important	
4	MAES GWASTAD HOLLOW WAY	TRACKWAY	Locally Important	
5	WELSHPOOL CHURCH (CHRIST CHURCH), YARD	CHURCHYARD	Locally Important	
6	WELSHPOOL, TOWN-LOCK MILL	CORN MILL	Locally Important	
22	WELSHPOOL, CANAL YARD 5 AND SALT WAREHOUSE	WAREHOUSE	Locally Important	
23	WELSHPOOL, MANSION HOUSE STABLES AND COACH HOUSE	STABLE	Locally Important	
24	WELSHPOOL, LOCKHOUSE STABLE	STABLE	Locally Important	
25	WELSHPOOL, CORNMILL WHEEL PIT	WHEEL PIT	Locally Important	
26	WELSHPOOL, CANAL TOWN LOCK WEIR	CANAL WEIR	Locally Important	
27	WELSHPOOL, HOLLYBUSH WHARF	CANAL WHARF	Locally Important	
28	WELSHPOOL, HOLLYBUSH WHARF STABLES	STABLE	Locally Important	
29	WELSHPOOL, HOLLYBUSH WHARF OUTBUILDING	OUTBUILDING	Locally Important	
30	WELSHPOOL, HOLLYBUSH WHARF WEIGHBRIDGE HOUSE AND WAREHOUSE	WAREHOUSE	Locally Important	
31	WELSHPOOL, BERRIEW ROAD 20	HOUSE	Locally Important	
32	WELSHPOOL, BERRIEW ROAD 19	HOUSE	Locally Important	
33	WELSHPOOL, BERRIEW ROAD, STONE HOUSE	HOUSE	Locally Important	
40	WELSHPOOL, OLDFORD MILITARY CAMP	MILITARY CAMP	Locally Important	
41	CANALSIDE TIMBER YARD	SAW MILL	Locally Important	
42	WELSHPOOL, CANAL WORKS	CANAL WORKS	Locally Important	
43	LLYN DU, POND	POND	Locally Important	
44	WELSHPOOL, BERRIEW STREET, 'POLA CINEMA'	CINEMA	Locally Important	
45	WELSHPOOL, BERRIEW STREET 2	HOUSE	Locally Important	
46	WELSHPOOL, BERRIEW STREET, SITE OF FORMER LION HOTEL	HOTEL	Locally Important	
48	MONTGOMERY CANAL, BRIDGE 119A	FOOTBRIDGE	Locally Important	
53	POWIS CASTLE ESTATE, AVENUE	AVENUE	Locally Important	

*Historic Environment Desk-Based Assessment For
Potential Development on Land Adjacent to the
Oldford Estate, Welshpool, SY21 7TE*

Project ID	Historic Asset Name	Historic Asset Type	Significance of Historic Asset	Status
1	WELSHPOOL, CHRIST CHURCH RIDGE AND FURROW	RIDGE AND FURROW	Minor Importance	
21	WELSHPOOL, SEVERN STREET 26, GREENHOUSE	GLASSHOUSE	Minor Importance	
34	WELSHPOOL, STONE HOUSE, WELL I	WELL	Minor Importance	
35	WELSHPOOL, STONE HOUSE, WELL II	WELL	Minor Importance	
36	WELSHPOOL, NATIONAL SCHOOL LATRINES	LATRINE	Minor Importance	
37	WELSHPOOL, LLYNDU BROOK, CULVERT	CULVERT	Minor Importance	
38	WELSHPOOL, CANAL BY-PASS ARCH	CANAL BY-PASS ARCH	Minor Importance	
39	WELSHPOOL, BRICK PIT	PIT	Minor Importance	
47	WELSHPOOL, BERRIEW STREET, 'POOL'	POND	Minor Importance	
50	MAES Y FELIN WYNT, RIDGE AND FURROW	RIDGE AND FURROW	Minor Importance	
51	MAES Y CASTLE, BANK	BANK (EARTHWORK)	Minor Importance	
52	OLDFORD, BANK (EARTHWORK)	BANK (EARTHWORK)	Minor Importance	
2	MAES GWASTAD PLATFORM	FAIR;FORT;MILITI A ENCAMPMENT	Unknown	
3	MAES GWASTAD BANK	BANK AND DITCH	Unknown	

Table 1: Assessed significance of historic assets in the 400-metre assessment area

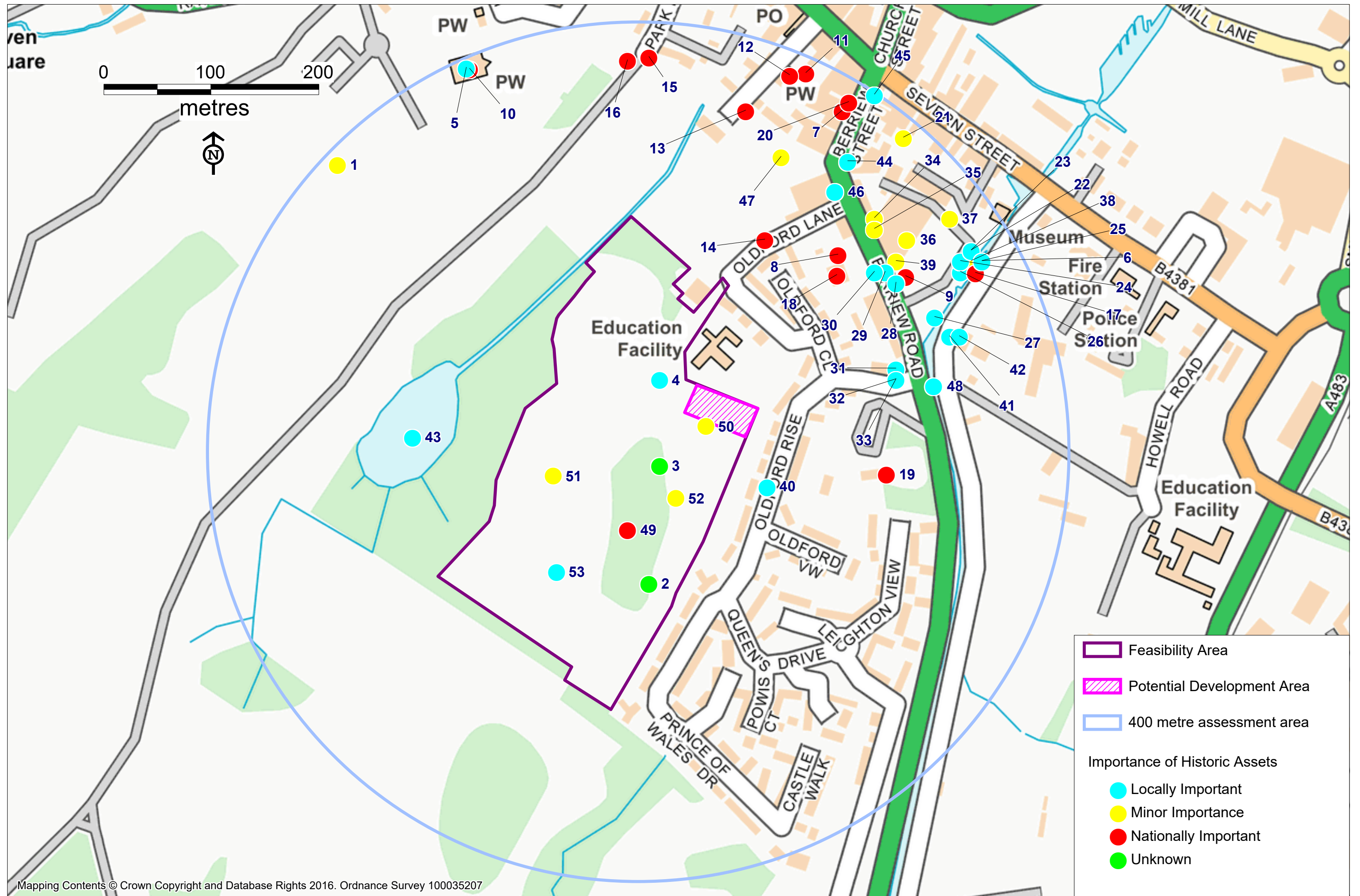


Figure 9: The 400 metre assessment area showing the importance of historic assets, labelled with project ID number

11. Assessment of Impact

11.1 The Direct and Indirect impact on each historic asset was assessed taking into account both physical and non-physical impacts. Each impact was assessed within the scale Very Low, Low, Moderate, High and Very High, taking into account the significance of the historic asset and the nature of the impact. An impact could be Negative or Positive and where impacts have equivalent positive and negative values, the term Neutral is used. A full table is found in Appendix A but a summary is tabulated in Table 2 below and illustrated in Figure 10.

Project ID	Historic Asset Name	Historic Asset Type	Level of Direct Impact	Level of Indirect Impact	Level of Impact in Setting	Level of Impact on Significance
50	MAES Y FELIN WYNT, RIDGE AND FURROW	RIDGE AND FURROW	Very High	None	None	None
52	OLDFORD, BANK (EARTHWORK)	BANK (EARTHWORK)	Moderate	None	None	None
49	POWIS CASTLE ESTATE	PARKLAND	Very Low	Very Low	Very Low	None
2	MAES GWASTAD PLATFORM	FAIR;FORT; MILITIA ENCAMPMENT	None	None	Very Low	None
3	MAES GWASTAD BANK	BANK AND DITCH	None	None	Very Low	None
4	MAES GWASTAD HOLLOW WAY	TRACKWAY	None	None	Very Low	None
40	WELSHPOOL, OLDFORD MILITARY CAMP	MILITARY CAMP	Unknown	Unknown	Unknown	Unknown
51	MAES Y CASTLE, BANK	BANK (EARTHWORK)	None	None	None	None
53	POWIS CASTLE ESTATE, AVENUE	AVENUE	None	None	None	None
1	WELSHPOOL, CHRIST CHURCH RIDGE AND FURROW	RIDGE AND FURROW	None	None	None	None
5	WELSHPOOL CHURCH (CHRIST CHURCH), YARD	CHURCHYARD	None	None	None	None
6	WELSHPOOL, TOWN-LOCK MILL	CORN MILL	None	None	None	None
7	WELSHPOOL, BERRIEW STREET 18-19	HOUSE	None	None	None	None
8	WELSHPOOL, BERRIEW STREET, 'OLDFORD HOUSE'	HOUSE	None	None	None	None
9	WELSHPOOL, BERRIEW STREET, 'NATIONAL SCHOOL'	SCHOOL	None	None	None	None
10	WELSHPOOL CHURCH (CHRIST CHURCH)	CHURCH	None	None	None	None
11	WELSHPOOL COCKPIT	COCKPIT	None	None	None	None

*Historic Environment Desk-Based Assessment For
Potential Development on Land Adjacent to the
Oldford Estate, Welshpool, SY21 7TE*

Project ID	Historic Asset Name	Historic Asset Type	Level of Direct Impact	Level of Indirect Impact	Level of Impact in Setting	Level of Impact on Significance
12	WELSHPOOL, NEW ST CHAPEL (ENGLISH CONGREGATIONAL)	NONCONFORM IST CHAPEL	None	None	None	None
13	WELSHPOOL, NEW STREET `VICTORIA HOUSE'	HOUSE	None	None	None	None
14	WELSHPOOL, OLDFORD LANE `OLDFORD COTTAGE'	HOUSE	None	None	None	None
15	POWIS CASTLE PARK, PARK LANE GATE PIERS AND GATES	GATEWAY	None	None	None	None
16	POWIS CASTLE PARK, LODGE	LODGE	None	None	None	None
17	WELSHPOOL, SEVERN STREET WELSHPOOL TOWN LOCK	CANAL LOCK	None	None	None	None
18	WELSHPOOL, BERRIEW ROAD, FORMER GRAMMAR SCHOOL	SCHOOL	None	None	None	None
19	WELSHPOOL, BERRIEW ROAD TRAETHLLAWN	HOUSE	None	None	None	None
20	WELSHPOOL, BERRIEW STREET 19	HOUSE	None	None	None	None
21	WELSHPOOL, SEVERN STREET 26, GREENHOUSE	GLASSHOUSE	None	None	None	None
22	WELSHPOOL, CANAL YARD 5 AND SALT WAREHOUSE	WAREHOUSE	None	None	None	None
23	WELSHPOOL, MANSION HOUSE STABLES AND COACH HOUSE	STABLE	None	None	None	None
24	WELSHPOOL, LOCKHOUSE STABLE	STABLE	None	None	None	None
25	WELSHPOOL, CORNMILL WHEEL PIT	WHEEL PIT	None	None	None	None
26	WELSHPOOL, CANAL TOWN LOCK WEIR	CANAL WEIR	None	None	None	None
27	WELSHPOOL, HOLLYBUSH WHARF	CANAL WHARF	None	None	None	None
28	WELSHPOOL, HOLLYBUSH WHARF STABLES	STABLE	None	None	None	None
29	WELSHPOOL,	OUTBUILDING	None	None	None	None

*Historic Environment Desk-Based Assessment For
Potential Development on Land Adjacent to the
Oldford Estate, Welshpool, SY21 7TE*

Project ID	Historic Asset Name	Historic Asset Type	Level of Direct Impact	Level of Indirect Impact	Level of Impact in Setting	Level of Impact on Significance
	HOLLYBUSH WHARF OUTBUILDING					
30	WELSHPOOL, HOLLYBUSH WHARF WEIGHBRIDGE HOUSE AND WAREHOUSE	WAREHOUSE	None	None	None	None
31	WELSHPOOL, BERRIEW ROAD 20	HOUSE	None	None	None	None
32	WELSHPOOL, BERRIEW ROAD 19	HOUSE	None	None	None	None
33	WELSHPOOL, BERRIEW ROAD, STONE HOUSE	HOUSE	None	None	None	None
34	WELSHPOOL, STONE HOUSE, WELL I	WELL	None	None	None	None
35	WELSHPOOL, STONE HOUSE, WELL II	WELL	None	None	None	None
36	WELSHPOOL, NATIONAL SCHOOL LATRINES	LATRINE	None	None	None	None
37	WELSHPOOL, LLYNDU BROOK, CULVERT	CULVERT	None	None	None	None
38	WELSHPOOL, CANAL BY-PASS ARCH	CANAL BY- PASS ARCH	None	None	None	None
39	WELSHPOOL, BRICK PIT	PIT	None	None	None	None
41	CANALSIDE TIMBER YARD	SAW MILL	None	None	None	None
42	WELSHPOOL, CANAL WORKS	CANAL WORKS	None	None	None	None
43	LLYN DU, POND	POND	None	None	None	None
44	WELSHPOOL, BERRIEW STREET, 'POLA CINEMA'	CINEMA	None	None	None	None
45	WELSHPOOL, BERRIEW STREET 2	HOUSE	None	None	None	None
46	WELSHPOOL, BERRIEW STREET, SITE OF FORMER LION HOTEL	HOTEL	None	None	None	None
47	WELSHPOOL, BERRIEW STREET, 'POOL'	POND	None	None	None	None
48	MONTGOMERY CANAL, BRIDGE 119A	FOOTBRIDGE	None	None	None	None

Table 2: Impact on historic assets within the 400 metre assessment area

- 11.2 As Table 2 shows, only one recorded historic asset within the 400-metre assessment area would experience a significant impact from the development, this would be ID number 50, an area of denuded cultivation ridges of minor importance.
- 11.3 There are no Scheduled Monuments within a 400-metre radius of the centre of the feasibility area. Two Scheduled Monuments are found within a 1.2 kilometre radius. There would be no impacts on either of these Scheduled Monuments.
- 11.4 There are 14 Listed Buildings within the 400-metre assessment area. There would be no impact on these buildings from a low-profile development at the proposed development site. Within the 1.2 kilometre radius area there are further 214 listed buildings. None of these would experience any impact from a low-profile development at the proposed development site.
- 11.5 There are no Registered Parks and Gardens within the 400-metre assessment area. There are two registered Parks and Gardens within the 1.2 kilometre assessment area, Powis Castle Garden PGW(Po)35(POW), and Llanerchydol Hall PGW(Po)36(POW).
- 11.6 There are no World Heritage sites within the 400 metres or the 1.2 kilometre assessment areas.
- 11.7 There are no registered Historic Landscapes within the 400 metres or the 1.2 kilometre assessment areas.
- 11.8 The overall potential development area is within the POWIS CASTLE PARK LANDMAP Historic Landscape Aspect Area (MNTGMHL386), see Figure 11, described as;
- "17th-century and later gardens and 18th and 19th-century landscape park possibly based on medieval deer-park associated with Powis Castle, with 20th-century estate conifer plantations and irregular fieldscapes in the outler (sic) park areas. Early settlement and land use in the area is indicated by the later prehistoric Pen-y-foel hillfort and by smaller defended enclosure sites. The area includes the two earlier medieval earthwork castles at Ladies Mount and Powis Middle Park and the Plas yr Alarch"*
- 11.8.1 The overall evaluation of this aspect area is Outstanding, the justification for this is *"The park (and its immediate setting) and the formal gardens surrounding Powis Castle. A combination of formal and informal designed landscape and garden, managed farmland and woodland. Also contains medieval and later prehistoric sites."*
- 11.9 There are no Conservation Areas within the feasibility area. The Welshpool Conservation Area lies within the eastern side of the 400-

metre assessment area, but there would be impacts on the Conservation Area from a modest development within the potential development area.

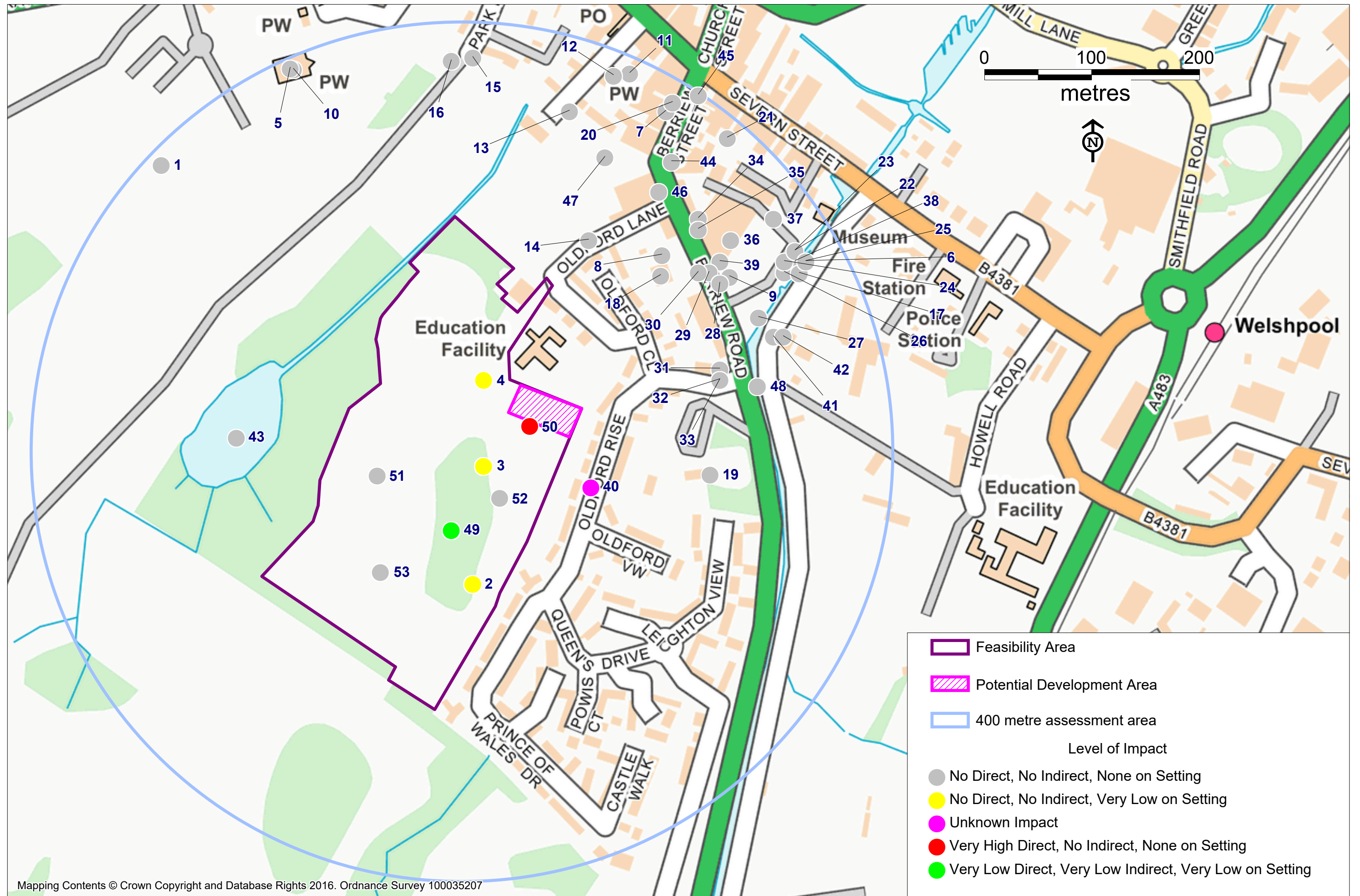
11.10 During the assessment, several previously unrecorded historic assets were recorded. These are;

ID number 50 – Maes y Felin Wynt Ridge & Furrow

ID number 51 – Maes y Castle Bank

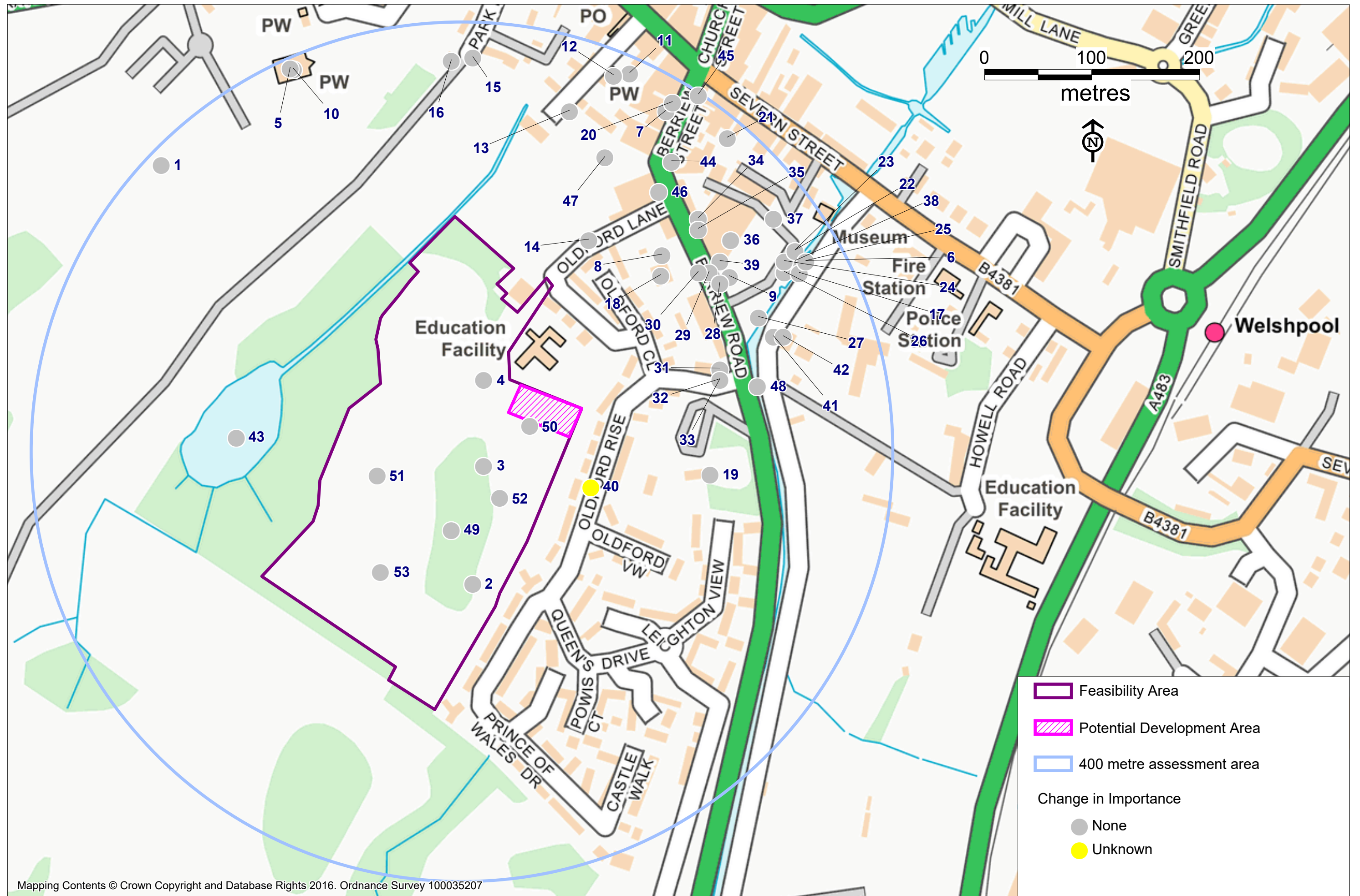
ID number 52 – Oldford Bank

ID number 53 – Powis Castle Estate Avenue



Mapping Contents © Crown Copyright and Database Rights 2016. Ordnance Survey 100035207

Figure 10: The 400 metre assessment area showing the impact on historic assets from a modest development in the potential development site, labelled with project ID number



Mapping Contents © Crown Copyright and Database Rights 2016. Ordnance Survey 100035207

Figure 11: The 400 metre assessment area showing the impact on importance from a modest development in the potential development site, labelled with project ID number

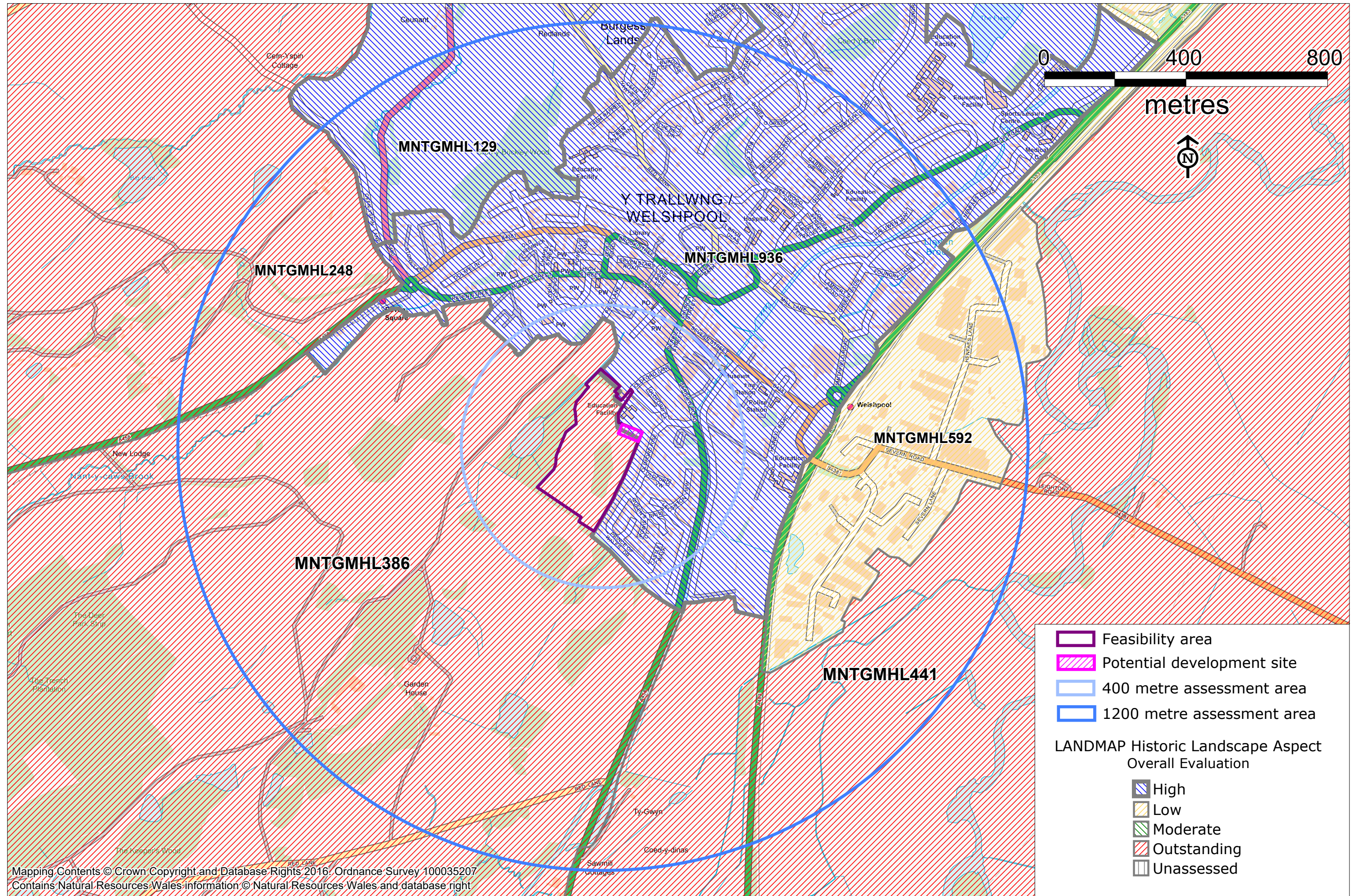


Figure 12: The feasibility area and potential development site showing the LANDMAP Historic Landscape aspect, labelled with LANDMAP Aspect Area Numbers

12. Conclusion

12.1 An initial assessment established that most of the feasibility area, which is 6.7 hectares in extent, has significant historic environment issues. These include the presence of extant archaeological earthworks, high buried archaeological potential, its inclusion within Powis Castle parkland and within the setting of designated assets as well as the presence of an area of historic woodland which includes mature oak and beech trees.

12.2 A small area in the northeast of the area, which is 0.17 hectares in area, was identified as being potentially suitable for a small development without causing any significant impact on the historic environment. This area is found within a natural hollow and largely sheltered from view from the parkland to the south. This area still lays within the historic parkland, but in an area which has been disturbed and has modern development on two sides, with the adjacent former school having also encroached inside the parkland boundary.

12.2.1 Evidence of pre-19th century cultivation has been noted within this smaller area, but the cultivation ridges are not visible on the ground and are considered to be of minor importance and can be preserved by record in mitigation of any future development.

12.3 This assessment has been undertaken in advance of any specific proposed for development being prepared. Should such a proposal appear in future, the assessment could be refined to address specific details of the proposal.

13. Reporting

13.1 Copies of this report will be provided to the client, National Monument Record and the Regional Historic Environment Record.

14. References

14.1 Map sources

Bleaze, Humphrey, 1629, *Part of the demaines belonging to the Redd Castle*.
Ordnance Survey, 1817, 2" to 1-mile Original Surveyors drawing, Newtown sheet

Ordnance Survey, 1891, 1:10560, 1st edition

Ordnance Survey, 1901, 1:2500, 2nd edition

Parish tithe map, 1840, Pool Parish

Parish tithe apportionment, 1840, Pool parish

14.2 Web-based materials

CIfA, 2020, *Standard and Guidance for historic environment desk-based assessment*

14.3 Published sources

Cadw, 2010, *Conservation Principles for the Sustainable Management of the Historic Environment in Wales*

Cadw, 2017, *Setting of Historic Assets in Wales*

14.4 Unpublished sources

Trysor, 2022, *Written Scheme of Investigation for an Historic Environment Desk-Based Assessment for Potential Development on Land Adjacent to The Oldford Estate, Welshpool SY21 7TE*.

14.5 Data Sources

Clwyd Powys Archaeological Trust, Historic Environment Record, data received 26/08/2022, CPAT enquiry number **E6772** HER data for a 400-metre area centred on SJ2228007132

Data received 05/10/2022 CPAT enquiry number **E6772** HER data for a 1200 metre area centred on SJ2228007132

Cadw, Listed Building all-Wales dataset, downloaded August 2022

Cadw, Parks and Gardens all-Wales dataset, downloaded August 2022

Cadw, Scheduled Ancient Monument all-Wales dataset, downloaded August 2022

Cadw, Registered Historic Landscapes dataset, supplied June 2014

Welsh Government, LiDAR 1 metre dataset, downloaded 17/10/2022

14.6 Aerial Photographs

Google Earth, images from 2006, 2009, 2014, 2020, 2022

Welsh Aerial Photography Unit, images from 1969 and 2013

15. Reliability & Limitations of Sources

- 15.1 In line with the requirements of the CIfA Standards & Guidance notes for Desk-based Assessments (CIfA, 2020, Point 3.3.6), the following observations on the usefulness and reliability of the sources used have been made.
- 15.2 The cartographic sources used include a range of Ordnance Survey maps produced during the 19th and 20th centuries as well as a 1629 estate map and the parish tithe map. All of which provided sufficiently clear and accurate representations of the evolving landscape of the assessment area.
- 15.2.1 The earliest map source was the 1817 Ordnance Surveyors Original Surveyors Drawings, of which an adequate digital copy is available through the British Museum.
- 15.2.2 The Pool parish tithe map of 1840 and the tithe apportionment were a good resource, with field level mapping, details of trees etc and field names and uses.
- 15.3 The main source of existing data for the assessment was the Clwyd Powys HER, supplied by the Clwyd Powys Archaeological Trust. The HER data for the area gave a moderately representative record of the Welshpool and its surroundings.

CPAT HER PRN	Historic Asset Name	Historic Asset Type	Record created?	Trysor Comments
126	Maes y Gareg Find	FINDSPOT	No record created	Findspot
5023	Powis Castle Park Ridge and Furrow	RIDGE AND FURROW	No record created	Location not known
5024	Welshpool, Christ Church Ridge and Furrow	RIDGE AND FURROW	Record created	
5643	Maes Gwastad Platform	FAIR;FORT;MILITIA ENCAMPMENT	Record created	
5644	Maes Gwastad bank	BANK AND DITCH	Record created	
5645	Maes Gwastad Hollow Way	TRACKWAY	Record created	
16427	Welshpool Church (Christ Church), yard	CHURCHYARD	Record created	
16971	Welshpool Church (Christ Church)	CHURCH	No record created	Duplicate
17714	Welshpool Church (Christ Church), bells	CHURCH BELL	No record created	Findspot
20315	Glascoed House	HOUSE	No record created	Location not known
20892	Welshpool, Town-Lock Mill	CORN MILL	Record created	
26952	Welshpool, site of windmill	WINDMILL	No record created	Location not known

*Historic Environment Desk-Based Assessment For
Potential Development on Land Adjacent to the
Oldford Estate, Welshpool, SY21 7TE*

CPAT HER PRN	Historic Asset Name	Historic Asset Type	Record created?	Trysor Comments
29272	Welshpool Medieval Town	URBAN AREA	No record created	General overview record
30618	Welshpool, Berriew Street 18-19	HOUSE	Record created	
30620	Welshpool, Berriew Street, 'Oldford House'	HOUSE	Record created	
30621	Welshpool, Berriew Street, 'National School'	SCHOOL	Record created	
30644	Welshpool Church (Christ Church)	CHURCH	Record created	
30708	Welshpool Cockpit	COCKPIT	Record created	
30709	Welshpool, New St Chapel (English Congregational)	NONCONFORMIST CHAPEL	Record created	
30710	Welshpool, New Street 'Victoria House'	HOUSE	Record created	
30711	Welshpool, Oldford Lane 'Oldford Cottage'	HOUSE	Record created	
36439	Powis Castle Park, Park Lane Gate Piers and Gates	GATEWAY	Record created	
36440	Powis Castle Park, Lodge	LODGE	Record created	
36453	Welshpool, Severn Street Welshpool Town Lock	CANAL LOCK	Record created	
36460	Welshpool, Berriew Road, former Grammar School	SCHOOL	Record created	
36514	Welshpool, Berriew Road Traethllawn	HOUSE	Record created	
37533	The Lord's Mill	WINDMILL	No record created	Placename
42493	Welshpool, Berriew Street 19	HOUSE	Record created	
64687	Welshpool, Old Ford	FORD	No record created	Placename
64688	Welshpool, Lower Maes y dre	FIELD SYSTEM	No record created	Placename
70323	Welshpool palstave	FINDSPOT	No record created	Findspot
70324	Welshpool spearhead	FINDSPOT	No record created	Findspot
70818	Welshpool, Severn Street 26, greenhouse	GLASSHOUSE	Record created	
72066	Welshpool, Canal Yard 5 and Salt Warehouse	WAREHOUSE	Record created	
72067	Welshpool, Mansion House Stables and Coach House	STABLE	Record created	
72068	Welshpool, Lockhouse stable	STABLE	Record created	
72069	Welshpool, cornmill wheel pit	WHEEL PIT	Record created	
72070	Welshpool, canal town lock weir	CANAL WEIR	Record created	

*Historic Environment Desk-Based Assessment For
Potential Development on Land Adjacent to the
Oldford Estate, Welshpool, SY21 7TE*

CPAT HER PRN	Historic Asset Name	Historic Asset Type	Record created?	Trysor Comments
72071	Welshpool, Hollybush Wharf	CANAL WHARF	Record created	
72072	Welshpool, Hollybush Wharf stables	STABLE	Record created	
72073	Welshpool, Hollybush Wharf outbuilding	OUTBUILDING	Record created	
72074	Welshpool, Hollybush Wharf weighbridge house and warehouse	WAREHOUSE	Record created	
72075	Welshpool, Berriew Road 20	HOUSE	Record created	
72076	Welshpool, Berriew Road 19	HOUSE	Record created	
72077	Welshpool, Berriew Road, Stone House	HOUSE	Record created	
72078	Welshpool, Stone House, well I	WELL	Record created	
72079	Welshpool, Stone House, well II	WELL	Record created	
72080	Welshpool, National School Latrines	LATRINE	Record created	
72081	Welshpool, Llyndu Brook, Culvert	CULVERT	Record created	
72082	Welshpool, canal by-pass arch	CANAL BY-PASS ARCH	Record created	
72083	Welshpool, brick pit	PIT	Record created	
77931	Welshpool, New Street, military hospital	HOSPITAL	No record created	Location not known
77932	Welshpool, Oldford military camp	MILITARY CAMP	Record created	
84210	Canalside Timber Yard	SAW MILL	Record created	
85911	Welshpool, canal works	CANAL WORKS	Record created	
88722	Christchurch, Brooch	FINDSPOT	No record created	Findspot
94073	Llyn du, pond	POND	Record created	
110885	Llyndu house	HOUSE	No record created	Location not known
118423	Welshpool, Berriew Street, 'Pola Cinema'	CINEMA	Record created	
118424	Welshpool, Berriew Street 2	HOUSE	Record created	
121769	Welshpool, Berriew Street, site of former Lion Hotel	HOTEL	Record created	
128623	Welshpool, Park Lane, The Earl's Secret Garden	GARDEN	No record created	Location not known
141527	Welshpool, Berriew Street, 'pool'	POND	Record created	
141880	Montgomery Canal, Bridge 119a	FOOTBRIDGE	Record created	
145270	Welshpool, Capt Viscount P R Clive, war memorial	WAR MEMORIAL	No record created	Findspot

CPAT HER PRN	Historic Asset Name	Historic Asset Type	Record created?	Trysor Comments
145414	Welshpool, Methodist Church, war memorial	WAR MEMORIAL	No record created	Location not known
145415	Welshpool, Methodist Church-ww2 Plaque, war memorial	WAR MEMORIAL	No record created	Location not known
145514	Welshpool, Welshpool Congregational, war memorial	WAR MEMORIAL	No record created	Wrong location and maybe a duplicate
145516	Welshpool, Welshpool Wesleyans, war memorial	WAR MEMORIAL	No record created	Wrong location and maybe a duplicate

Table 4: Comments on records from the regional HER, CPAT Enquiry number E6772 - HER data for a 400-metre area centred on SJ2228007132

- 15.4 The RCAHMW's National Monuments Record was useful but with fewer records than the HER.
- 15.5 Aerial photographs on Google Earth, dating to 2006, 2009, 2014, 2020 and 2022, were used to inform the assessment. The 2014 and 2020 images had some cloud cover and were less useful than the other images.
- 15.6 Aerial photographs from the Welsh Government's Aerial Photographic Unit dating to 1969 and 2013 were available online but were not of sufficient quality to be useful.

Jenny Hall & Paul Sambrook
Trysor,
October, 2022

**Appendix A:
Gazetteer of
Historic Assets
Within 400 metres**

ID Number: 1

HER PRN: 5024 **NMR NPRN:**

WELSHPOOL, CHRIST CHURCH RIDGE AND FURROW

RIDGE AND FURROW

NGR: SJ220074

Period: Medieval;Post Medieval **Broadclass:** Agriculture and Subsistence

Form: **Condition:** **Survival:**

Site Status:

SAM number: **LB number:** **grade:**

**Trysor
Description:**

Rarity:

**Distance from
development:**

Group Value:

Evidential Value:

Historical Value:

Aesthetic Value:

Communal Value:

Setting:

Significance: Minor Importance

**Any Direct
Impact?:** No
None

**Any Indirect
Impact?:** No
None

**Level of Impact
on Setting:** None

**Comment on
Impact:** No impact.

ID Number: 2

HER PRN: 5643 NMR NPRN:

MAES GWASTAD PLATFORM

FAIR;FORT;MILITIA ENCAMPMENT

NGR: SJ22290701 **Feature Centred**
Period: Medieval;Post **Broadclass:** Defence;Recreational
 Medieval;Roman
Form: Earthwork **Condition:** Good **Survival:** Near Intact
Site Status:

SAM number: **LB number:** **grade:**
Trysor
Description:

Rarity: Unknown

Distance from development: 110 metres southwest

Group Value: Unknown

Evidential Value: Earthwork

Historical Value: Mentioned in archaeological sources

Aesthetic Value: None

Communal Value: None

Setting: Found at the crest of a low ridge at Oldford, within a pasture field which was formerly part of the parkland of Powis Castle. Modern housing developments exist immediately to the east.

Significance: Unknown

Any Direct Impact?: No
None

Any Indirect Impact?: No
None

Level of Impact on Setting: Very Low

Comment on Impact: Development would be brought closer to the feature.

ID Number: 3

HER PRN: 5644 **NMR NPRN:**

MAES GWASTAD BANK

BANK AND DITCH

NGR: SJ22300712 Linear

Period: Post Medieval **Broadclass:** Monument (By Form)

Form: Earthwork **Condition:** Fair **Survival:** Damaged

Site Status:

	SAM number:	LB number:	grade:
Trysor Description:			

Rarity: Common

Distance from development: 70 metres to the southwest

Group Value: May be associated with nearby trackway PRN 5645 and enclosure PRN 5643

Evidential Value: Earthwork

Historical Value: None

Aesthetic Value: None

Communal Value: None

Setting: This bank is found within an area of former parkland associated with Powis Castle. It is situated on a north facing slope, just below the crest of a low ridge.

Significance: Unknown

Any Direct Impact?: No
None

Any Indirect Impact?: No
None

Level of Impact on Setting: Very Low

Comment on Impact: Development would be brought closer to the feature.

ID Number: 4

HER PRN: 5645 **NMR NPRN:**

MAES GWASTAD HOLLOW WAY

TRACKWAY

NGR: SJ22300720 **Linear**
Period: Medieval **Broadclass:** Transport
Form: Earthwork **Condition:** Fair **Survival:** Damaged
Site Status:

	SAM number:	LB number:	grade:
Trysor Description:			

Rarity: Not rare

Distance from development: 40 metres to the west

Group Value: Within the Powis Castle parkland

Evidential Value: Earthwork, historic mapping

Historical Value: Gave access into the heart of the Powis Castle estate

Aesthetic Value: None

Communal Value: Used by the public accessing the field.

Setting: This linear earthwork feature runs through a pasture field which was formerly part of the Powis Castle estate parkland. It runs approximately north to south to the western side of the low ridge at Oldford.

Significance: Locally Important

Any Direct Impact?: No
None

Any Indirect Impact?: No
None

Level of Impact on Setting: Very Low

Comment on Impact: Development would be brought closer to the feature.

ID Number: 5

HER PRN: 16427 **NMR NPRN:**

WELSHPOOL CHURCH (CHRIST CHURCH), YARD

CHURCHYARD

NGR: SJ22120749

Period: Post Medieval

Broadclass: Religious Ritual and Funerary

Form:

Condition:

Survival:

Site Status:

SAM number:

LB number:

grade:

Trysor

Description:

Rarity:

**Distance from
development:**

Group Value:

Evidential Value:

Historical Value:

Aesthetic Value:

Communal Value:

Setting:

Significance: Locally Important

**Any Direct
Impact?:** No
None

**Any Indirect
Impact?:** No
None

**Level of Impact
on Setting:** None

**Comment on
Impact:** No impact

ID Number: 6

HER PRN: 20892 **NMR NPRN:**

WELSHPOOL, TOWN-LOCK MILL

CORN MILL

NGR: SJ2260007310

Period: Post Medieval

Broadclass: Agriculture and Subsistence

Form:

Condition:

Survival:

Site Status:

SAM number:

LB number:

grade:

Trysor

Description:

Rarity:

**Distance from
development:**

Group Value:

Evidential Value:

Historical Value:

Aesthetic Value:

Communal Value:

Setting:

Significance: Locally Important

**Any Direct
Impact?:** No
None

**Any Indirect
Impact?:** No
None

**Level of Impact
on Setting:** None

**Comment on
Impact:** No impact

ID Number: 7

HER PRN: 30618 **NMR NPRN:**

WELSHPOOL, BERRIEW STREET 18-19

HOUSE

NGR: SJ2247007450

Period: Post Medieval

Broadclass: Domestic

Form:

Condition:

Survival:

Site Status: Listed Building

SAM number:

LB number: 7758

grade: II

Trysor

Description:

Rarity:

**Distance from
development:**

Group Value:

Evidential Value:

Historical Value:

Aesthetic Value:

Communal Value:

Setting:

Significance: Nationally Important

**Any Direct
Impact?:** No
None

**Any Indirect
Impact?:** No
None

**Level of Impact
on Setting:** None

**Comment on
Impact:** No impact

ID Number: 8

HER PRN: 30620 **NMR NPRN:**

WELSHPOOL, BERRIEW STREET, 'OLDFORD HOUSE'
HOUSE

NGR: SJ2246607316

Period: Post Medieval

Broadclass: Domestic

Form:

Condition:

Survival:

Site Status: Listed Building

SAM number:

LB number: 7759

grade: II

**Trysor
Description:**

Rarity:

**Distance from
development:
Group Value:**

Evidential Value:

Historical Value:

Aesthetic Value:

Communal Value:

Setting:

Significance: Nationally Important

**Any Direct
Impact?:** No
None

**Any Indirect
Impact?:** No
None

**Level of Impact
on Setting:** None

**Comment on
Impact:** No impact

ID Number: 9

HER PRN: 30621 **NMR NPRN:**

WELSHPOOL, BERRIEW STREET, 'NATIONAL SCHOOL'

SCHOOL

NGR: SJ2252907296

Period: Post Medieval

Broadclass: Education

Form:

Condition:

Survival:

Site Status: Listed Building

SAM number:

LB number: 7760

grade: II

Trysor

Description:

Rarity:

**Distance from
development:**

Group Value:

Evidential Value:

Historical Value:

Aesthetic Value:

Communal Value:

Setting:

Significance: Nationally Important

**Any Direct
Impact?:** No
None

**Any Indirect
Impact?:** No
None

**Level of Impact
on Setting:** None

**Comment on
Impact:** No impact

ID Number: 10

HER PRN: 30644 **NMR NPRN:**

WELSHPOOL CHURCH (CHRIST CHURCH)

CHURCH

NGR: SJ2212307489

Period: Post Medieval

Broadclass: Religious Ritual and Funerary

Form:

Condition:

Survival:

Site Status: Listed Building

SAM number:
II*

LB number: 7778

grade:

Trysor

Description:

Rarity:

**Distance from
development:**

Group Value:

Evidential Value:

Historical Value:

Aesthetic Value:

Communal Value:

Setting:

Significance: Nationally Important

**Any Direct
Impact?:** No
None

**Any Indirect
Impact?:** No
None

**Level of Impact
on Setting:** None

**Comment on
Impact:** No impact

ID Number: 11

HER PRN: 30708 **NMR NPRN:**

WELSHPOOL COCKPIT

COCKPIT

NGR: SJ2243607485

Period: Post Medieval

Broadclass: Recreational

Form:

Condition:

Survival:

Site Status: Listed Building

SAM number:

LB number: 7822

grade: II

Trysor

Description:

Rarity:

**Distance from
development:**

Group Value:

Evidential Value:

Historical Value:

Aesthetic Value:

Communal Value:

Setting:

Significance: Nationally Important

**Any Direct
Impact?:** No
None

**Any Indirect
Impact?:** No
None

**Level of Impact
on Setting:** None

**Comment on
Impact:** No impact

ID Number: 12

HER PRN: 30709 **NMR NPRN:**

WELSHPOOL, NEW ST CHAPEL (ENGLISH CONGREGATIONAL)

NONCONFORMIST CHAPEL

NGR: SJ2242107483

Period: Post Medieval

Broadclass: Religious Ritual and Funerary

Form:

Condition:

Survival:

Site Status: Listed Building

SAM number:

LB number: 7823

grade: II

Trysor

Description:

Rarity:

**Distance from
development:**

Group Value:

Evidential Value:

Historical Value:

Aesthetic Value:

Communal Value:

Setting:

Significance: Nationally Important

**Any Direct
Impact?:** No
None

**Any Indirect
Impact?:** No
None

**Level of Impact
on Setting:** None

**Comment on
Impact:** No impact

ID Number: 13

HER PRN: 30710 **NMR NPRN:**

WELSHPOOL, NEW STREET `VICTORIA HOUSE`
HOUSE

NGR: SJ2238007450

Period: Post Medieval

Broadclass: Domestic

Form:

Condition:

Survival:

Site Status: Listed Building

SAM number:

LB number: 7824

grade: II

Trysor

Description:

Rarity:

**Distance from
development:**

Group Value:

Evidential Value:

Historical Value:

Aesthetic Value:

Communal Value:

Setting:

Significance: Nationally Important

**Any Direct
Impact?:** No
None

**Any Indirect
Impact?:** No
None

**Level of Impact
on Setting:** None

**Comment on
Impact:** No impact. No intervisibility due to topography and existing buildings.

ID Number: 14

HER PRN: 30711 **NMR NPRN:**

WELSHPOOL, OLDFORD LANE `OLDFORD COTTAGE'

HOUSE

NGR: SJ2239807330

Period: Post Medieval

Broadclass: Domestic

Form:

Condition:

Survival:

Site Status: Listed Building

SAM number:

LB number: 7825

grade: II

Trysor

Description:

Rarity:

**Distance from
development:**

Group Value:

Evidential Value:

Historical Value:

Aesthetic Value:

Communal Value:

Setting:

Significance: Nationally Important

**Any Direct
Impact?:** No
None

**Any Indirect
Impact?:** No
None

**Level of Impact
on Setting:** None

**Comment on
Impact:** No impact

ID Number: 15

HER PRN: 36439 **NMR NPRN:**

POWIS CASTLE PARK, PARK LANE GATE PIERS AND GATES

GATEWAY

NGR: SJ2229007500

Period: Modern

Broadclass: Gardens Parks and Open Spaces

Form:

Condition:

Survival:

Site Status: Listed Building

SAM number:

LB number: 16660

grade: II

Trysor

Description:

Rarity:

**Distance from
development:**

Group Value:

Evidential Value:

Historical Value:

Aesthetic Value:

Communal Value:

Setting:

Significance: Nationally Important

**Any Direct
Impact?:** No
None

**Any Indirect
Impact?:** No
None

**Level of Impact
on Setting:** None

**Comment on
Impact:** No impact

ID Number: 16

HER PRN: 36440 **NMR NPRN:**

POWIS CASTLE PARK, LODGE

LODGE

NGR: SJ2227007497

Period: Modern

Broadclass: Domestic

Form:

Condition:

Survival:

Site Status: Listed Building

SAM number:

LB number: 16703

grade: II

Trysor

Description:

Rarity:

**Distance from
development:**

Group Value:

Evidential Value:

Historical Value:

Aesthetic Value:

Communal Value:

Setting:

Significance: Nationally Important

**Any Direct
Impact?:** No
None

**Any Indirect
Impact?:** No
None

**Level of Impact
on Setting:** None

**Comment on
Impact:** No impact

ID Number: 17

HER PRN: 36453 **NMR NPRN:**

WELSHPOOL, SEVERN STREET WELSHPOOL TOWN LOCK

CANAL LOCK

NGR: SJ2259407299

Period: Post Medieval

Broadclass: Transport

Form:

Condition:

Survival:

Site Status: Listed Building

SAM number:

LB number: 16729

grade: II

Trysor

Description:

Rarity:

**Distance from
development:**

Group Value:

Evidential Value:

Historical Value:

Aesthetic Value:

Communal Value:

Setting:

Significance: Nationally Important

**Any Direct
Impact?:** No
None

**Any Indirect
Impact?:** No
None

**Level of Impact
on Setting:** None

**Comment on
Impact:** No impact

ID Number: 18

HER PRN: 36460 **NMR NPRN:**

WELSHPOOL, BERRIEW ROAD, FORMER GRAMMAR SCHOOL
SCHOOL

NGR: SJ2246507297

Period: Post Medieval

Broadclass: Education

Form:

Condition:

Survival:

Site Status: Listed Building

SAM number:

LB number: 16577

grade: II

Trysor

Description:

Rarity:

**Distance from
development:**

Group Value:

Evidential Value:

Historical Value:

Aesthetic Value:

Communal Value:

Setting:

Significance: Nationally Important

**Any Direct
Impact?:** No
None

**Any Indirect
Impact?:** No
None

**Level of Impact
on Setting:** None

**Comment on
Impact:** No impact

ID Number: 19

HER PRN: 36514 **NMR NPRN:**

WELSHPOOL, BERRIEW ROAD TRAETHLLAWN

HOUSE

NGR: SJ2251107112

Period: Post Medieval

Broadclass: Domestic

Form:

Condition:

Survival:

Site Status: Listed Building

SAM number:

LB number: 16579

grade: II

Trysor

Description:

Rarity:

**Distance from
development:**

Group Value:

Evidential Value:

Historical Value:

Aesthetic Value:

Communal Value:

Setting:

Significance: Nationally Important

**Any Direct
Impact?:** No
None

**Any Indirect
Impact?:** No
None

**Level of Impact
on Setting:** None

**Comment on
Impact:** No impact

ID Number: 20

HER PRN: 42493 **NMR NPRN:**

WELSHPOOL, BERRIEW STREET 19

HOUSE

NGR: SJ2247607458

Period: Post Medieval

Broadclass: Domestic

Form:

Condition:

Survival:

Site Status: Listed Building

SAM number:

LB number: 16815

grade: II

Trysor

Description:

Rarity:

**Distance from
development:**

Group Value:

Evidential Value:

Historical Value:

Aesthetic Value:

Communal Value:

Setting:

Significance: Nationally Important

**Any Direct
Impact?:** No
None

**Any Indirect
Impact?:** No
None

**Level of Impact
on Setting:** None

**Comment on
Impact:** No impact

ID Number: 21

HER PRN: 70818 **NMR NPRN:**

WELSHPOOL, SEVERN STREET 26, GREENHOUSE

GLASSHOUSE

NGR: SJ2252707425

Period: Post Medieval

Broadclass: Agriculture and Subsistence

Form:

Condition:

Survival:

Site Status:

SAM number:

LB number:

grade:

Trysor

Description:

Rarity:

**Distance from
development:**

Group Value:

Evidential Value:

Historical Value:

Aesthetic Value:

Communal Value:

Setting:

Significance: Minor Importance

**Any Direct
Impact?:** No
None

**Any Indirect
Impact?:** No
None

**Level of Impact
on Setting:** None

**Comment on
Impact:** No impact

ID Number: 22

HER PRN: 72066 **NMR NPRN:**

WELSHPOOL, CANAL YARD 5 AND SALT WAREHOUSE

WAREHOUSE

NGR: SJ22590732

Period: Post Medieval

Broadclass: Commercial

Form:

Condition:

Survival:

Site Status:

SAM number:

LB number:

grade:

Trysor

Description:

Rarity:

**Distance from
development:**

Group Value:

Evidential Value:

Historical Value:

Aesthetic Value:

Communal Value:

Setting:

Significance: Locally Important

**Any Direct
Impact?:** No
None

**Any Indirect
Impact?:** No
None

**Level of Impact
on Setting:** None

**Comment on
Impact:** No impact

ID Number: 23

HER PRN: 72067 **NMR NPRN:**

WELSHPOOL, MANSION HOUSE STABLES AND COACH HOUSE

STABLE

NGR: SJ22590732

Period: Post Medieval

Broadclass: Agriculture and Subsistence

Form:

Condition:

Survival:

Site Status:

SAM number:

LB number:

grade:

Trysor

Description:

Rarity:

**Distance from
development:**

Group Value:

Evidential Value:

Historical Value:

Aesthetic Value:

Communal Value:

Setting:

Significance: Locally Important

**Any Direct
Impact?:** No
None

**Any Indirect
Impact?:** No
None

**Level of Impact
on Setting:** None

**Comment on
Impact:** No impact

ID Number: 24

HER PRN: 72068 **NMR NPRN:**

WELSHPOOL, LOCKHOUSE STABLE

STABLE

NGR: SJ22580731

Period: Post Medieval

Broadclass: Agriculture and Subsistence

Form:

Condition:

Survival:

Site Status:

SAM number:

LB number:

grade:

Trysor

Description:

Rarity:

**Distance from
development:**

Group Value:

Evidential Value:

Historical Value:

Aesthetic Value:

Communal Value:

Setting:

Significance: Locally Important

**Any Direct
Impact?:** No
None

**Any Indirect
Impact?:** No
None

**Level of Impact
on Setting:** None

**Comment on
Impact:** No impact

ID Number: 25

HER PRN: 72069 **NMR NPRN:**

WELSHPOOL, CORNMILL WHEEL PIT

WHEEL PIT

NGR: SJ22600731

Period: Post Medieval

Broadclass: Industrial

Form:

Condition:

Survival:

Site Status:

SAM number:

LB number:

grade:

Trysor

Description:

Rarity:

**Distance from
development:**

Group Value:

Evidential Value:

Historical Value:

Aesthetic Value:

Communal Value:

Setting:

Significance: Locally Important

**Any Direct
Impact?:** No
None

**Any Indirect
Impact?:** No
None

**Level of Impact
on Setting:** None

**Comment on
Impact:** No impact

ID Number: 26

HER PRN: 72070 **NMR NPRN:**

WELSHPOOL, CANAL TOWN LOCK WEIR

CANAL WEIR

NGR: SJ22580730

Period: Post Medieval

Broadclass: Transport

Form:

Condition:

Survival:

Site Status:

SAM number:

LB number:

grade:

Trysor

Description:

Rarity:

**Distance from
development:**

Group Value:

Evidential Value:

Historical Value:

Aesthetic Value:

Communal Value:

Setting:

Significance: Locally Important

**Any Direct
Impact?:** No
None

**Any Indirect
Impact?:** No
None

**Level of Impact
on Setting:** None

**Comment on
Impact:** No impact

ID Number: 27

HER PRN: 72071 **NMR NPRN:**

WELSHPOOL, HOLLYBUSH WHARF

CANAL WHARF

NGR: SJ2255607258

Period: Post Medieval

Broadclass: Transport

Form:

Condition:

Survival:

Site Status:

SAM number:

LB number:

grade:

Trysor

Description:

Rarity:

**Distance from
development:**

Group Value:

Evidential Value:

Historical Value:

Aesthetic Value:

Communal Value:

Setting:

Significance: Locally Important

**Any Direct
Impact?:** No
None

**Any Indirect
Impact?:** No
None

**Level of Impact
on Setting:** None

**Comment on
Impact:** No impact

ID Number: 28

HER PRN: 72072 **NMR NPRN:**

WELSHPOOL, HOLLYBUSH WHARF STABLES

STABLE

NGR: SJ22520729

Period: Post Medieval

Broadclass: Agriculture and Subsistence

Form:

Condition:

Survival:

Site Status:

SAM number:

LB number:

grade:

Trysor

Description:

Rarity:

**Distance from
development:**

Group Value:

Evidential Value:

Historical Value:

Aesthetic Value:

Communal Value:

Setting:

Significance: Locally Important

**Any Direct
Impact?:** No
None

**Any Indirect
Impact?:** No
None

**Level of Impact
on Setting:** None

**Comment on
Impact:** No impact

ID Number: 29

HER PRN: 72073 **NMR NPRN:**

WELSHPOOL, HOLLYBUSH WHARF OUTBUILDING

OUTBUILDING

NGR: SJ22510730

Period: Post Medieval

Broadclass: Domestic

Form:

Condition:

Survival:

Site Status:

SAM number:

LB number:

grade:

Trysor

Description:

Rarity:

**Distance from
development:**

Group Value:

Evidential Value:

Historical Value:

Aesthetic Value:

Communal Value:

Setting:

Significance: Locally Important

**Any Direct
Impact?:** No
None

**Any Indirect
Impact?:** No
None

**Level of Impact
on Setting:** None

**Comment on
Impact:** No impact

ID Number: 30

HER PRN: 72074 **NMR NPRN:**

WELSHPOOL, HOLLYBUSH WHARF WEIGHBRIDGE HOUSE AND
WAREHOUSE

WAREHOUSE

NGR: SJ22500730

Period: Post Medieval

Broadclass: Commercial

Form:

Condition:

Survival:

Site Status:

SAM number:

LB number:

grade:

Trysor

Description:

Rarity:

**Distance from
development:**

Group Value:

Evidential Value:

Historical Value:

Aesthetic Value:

Communal Value:

Setting:

Significance: Locally Important

**Any Direct
Impact?:** No
None

**Any Indirect
Impact?:** No
None

**Level of Impact
on Setting:** None

**Comment on
Impact:** No impact

ID Number: 31

HER PRN: 72075 **NMR NPRN:**

WELSHPOOL, BERRIEW ROAD 20

HOUSE

NGR: SJ22520721

Period: Post Medieval

Broadclass: Domestic

Form:

Condition:

Survival:

Site Status:

SAM number:

LB number:

grade:

Trysor

Description:

Rarity:

**Distance from
development:**

Group Value:

Evidential Value:

Historical Value:

Aesthetic Value:

Communal Value:

Setting:

Significance: Locally Important

**Any Direct
Impact?:** No
None

**Any Indirect
Impact?:** No
None

**Level of Impact
on Setting:** None

**Comment on
Impact:** No impact

ID Number: 32

HER PRN: 72076 **NMR NPRN:**

WELSHPOOL, BERRIEW ROAD 19

HOUSE

NGR: SJ22520720

Period: Post Medieval

Broadclass: Domestic

Form:

Condition:

Survival:

Site Status:

SAM number:

LB number:

grade:

Trysor

Description:

Rarity:

**Distance from
development:**

Group Value:

Evidential Value:

Historical Value:

Aesthetic Value:

Communal Value:

Setting:

Significance: Locally Important

**Any Direct
Impact?:** No
None

**Any Indirect
Impact?:** No
None

**Level of Impact
on Setting:** None

**Comment on
Impact:** No impact

ID Number: 33

HER PRN: 72077 **NMR NPRN:**

WELSHPOOL, BERRIEW ROAD, STONE HOUSE
HOUSE

NGR: SJ22520720

Period: Post Medieval

Broadclass: Domestic

Form:

Condition:

Survival:

Site Status:

SAM number:

LB number:

grade:

Trysor

Description:

Rarity:

**Distance from
development:**

Group Value:

Evidential Value:

Historical Value:

Aesthetic Value:

Communal Value:

Setting:

Significance: Locally Important

**Any Direct
Impact?:** No
None

**Any Indirect
Impact?:** No
None

**Level of Impact
on Setting:** None

**Comment on
Impact:** No impact

ID Number: 34

HER PRN: 72078 **NMR NPRN:**

WELSHPOOL, STONE HOUSE, WELL I

WELL

NGR: SJ22500735

Period: Post Medieval

Broadclass: Water Supply and Drainage

Form:

Condition:

Survival:

Site Status:

SAM number:

LB number:

grade:

Trysor

Description:

Rarity:

**Distance from
development:**

Group Value:

Evidential Value:

Historical Value:

Aesthetic Value:

Communal Value:

Setting:

Significance: Minor Importance

**Any Direct
Impact?:** No
None

**Any Indirect
Impact?:** No
None

**Level of Impact
on Setting:** None

**Comment on
Impact:** No impact

ID Number: 35

HER PRN: 72079 **NMR NPRN:**

WELSHPOOL, STONE HOUSE, WELL II

WELL

NGR: SJ22500734

Period: Post Medieval

Broadclass: Water Supply and Drainage

Form:

Condition:

Survival:

Site Status:

SAM number:

LB number:

grade:

Trysor

Description:

Rarity:

**Distance from
development:**

Group Value:

Evidential Value:

Historical Value:

Aesthetic Value:

Communal Value:

Setting:

Significance: Minor Importance

**Any Direct
Impact?:** No
None

**Any Indirect
Impact?:** No
None

**Level of Impact
on Setting:** None

**Comment on
Impact:** No impact

ID Number: 36

HER PRN: 72080 **NMR NPRN:**

WELSHPOOL, NATIONAL SCHOOL LATRINES

LATRINE

NGR: SJ22530733

Period: Post Medieval

Broadclass: Water Supply and Drainage

Form:

Condition:

Survival:

Site Status:

SAM number:

LB number:

grade:

Trysor

Description:

Rarity:

**Distance from
development:**

Group Value:

Evidential Value:

Historical Value:

Aesthetic Value:

Communal Value:

Setting:

Significance: Minor Importance

**Any Direct
Impact?:** No
None

**Any Indirect
Impact?:** No
None

**Level of Impact
on Setting:** None

**Comment on
Impact:** No impact

ID Number: 37

HER PRN: 72081 **NMR NPRN:**

WELSHPOOL, LLYNDU BROOK, CULVERT

CULVERT

NGR: SJ22570735

Period: Post Medieval

Broadclass: Water Supply and Drainage

Form:

Condition:

Survival:

Site Status:

SAM number:

LB number:

grade:

Trysor

Description:

Rarity:

**Distance from
development:**

Group Value:

Evidential Value:

Historical Value:

Aesthetic Value:

Communal Value:

Setting:

Significance: Minor Importance

**Any Direct
Impact?:** No
None

**Any Indirect
Impact?:** No
None

**Level of Impact
on Setting:** None

**Comment on
Impact:** No impact

ID Number: 38

HER PRN: 72082 **NMR NPRN:**

WELSHPOOL, CANAL BY-PASS ARCH

CANAL BY-PASS ARCH

NGR: SJ22590731

Period: Post Medieval

Broadclass: Transport

Form:

Condition:

Survival:

Site Status:

SAM number:

LB number:

grade:

Trysor

Description:

Rarity:

**Distance from
development:**

Group Value:

Evidential Value:

Historical Value:

Aesthetic Value:

Communal Value:

Setting:

Significance: Minor Importance

**Any Direct
Impact?:** No
None

**Any Indirect
Impact?:** No
None

**Level of Impact
on Setting:** None

**Comment on
Impact:** No impact

ID Number: 39

HER PRN: 72083 **NMR NPRN:**

WELSHPOOL, BRICK PIT

PIT

NGR: SJ22520731

Period: Post Medieval

Broadclass: Monument (By Form)

Form:

Condition:

Survival:

Site Status:

SAM number:

LB number:

grade:

Trysor

Description:

Rarity:

**Distance from
development:**

Group Value:

Evidential Value:

Historical Value:

Aesthetic Value:

Communal Value:

Setting:

Significance: Minor Importance

**Any Direct
Impact?:** No
None

**Any Indirect
Impact?:** No
None

**Level of Impact
on Setting:** None

**Comment on
Impact:** No impact

ID Number: 40

HER PRN: 77932 **NMR NPRN:**

WELSHPOOL, OLDFORD MILITARY CAMP

MILITARY CAMP

NGR: SJ224071

Period: Post Medieval

Broadclass: Defence

Form:

Condition:

Survival:

Site Status:

SAM number:

LB number:

grade:

Trysor

Description:

Rarity: Not rare

Distance from development: Unknown but in close proximity

Group Value: None

Evidential Value: Documentary

Historical Value: Mentioned in historic sources

Aesthetic Value: None

Communal Value: None

Setting: Unknown

Significance: Locally Important

Any Direct Impact?: No
Unknown

Any Indirect Impact?: No
Unknown

Level of Impact on Setting: Unknown

Comment on Impact: Insufficient information available to assess potential impacts. This site may not lay within the area of interest.

ID Number: 41

HER PRN: 84210 **NMR NPRN:**

CANALSIDE TIMBER YARD

SAW MILL

NGR: SJ22570724

Period: Post Medieval

Broadclass: Industrial

Form:

Condition:

Survival:

Site Status:

SAM number:

LB number:

grade:

Trysor

Description:

Rarity:

**Distance from
development:**

Group Value:

Evidential Value:

Historical Value:

Aesthetic Value:

Communal Value:

Setting:

Significance: Locally Important

**Any Direct
Impact?:** No
None

**Any Indirect
Impact?:** No
None

**Level of Impact
on Setting:** None

**Comment on
Impact:** No impact

ID Number: 42

HER PRN: 85911 **NMR NPRN:**

WELSHPOOL, CANAL WORKS

CANAL WORKS

NGR: SJ2257907240

Period: Post Medieval

Broadclass: Industrial

Form:

Condition:

Survival:

Site Status:

SAM number:

LB number:

grade:

Trysor

Description:

Rarity:

**Distance from
development:**

Group Value:

Evidential Value:

Historical Value:

Aesthetic Value:

Communal Value:

Setting:

Significance: Locally Important

**Any Direct
Impact?:** No
None

**Any Indirect
Impact?:** No
None

**Level of Impact
on Setting:** None

**Comment on
Impact:** No impact

ID Number: 43

HER PRN: 94073 **NMR NPRN:**

LLYN DU, POND

POND

NGR: SJ2207007146

Period: Post Medieval

Broadclass: Monument (By Form)

Form:

Condition:

Survival:

Site Status:

SAM number:

LB number:

grade:

Trysor

Description:

Rarity:

**Distance from
development:**

Group Value:

Evidential Value:

Historical Value:

Aesthetic Value:

Communal Value:

Setting:

Significance: Locally Important

**Any Direct
Impact?:** No
None

**Any Indirect
Impact?:** No
None

**Level of Impact
on Setting:** None

**Comment on
Impact:** No impact

ID Number: 44

HER PRN: 118423 **NMR NPRN:**

WELSHPOOL, BERRIEW STREET, 'POLA CINEMA'

CINEMA

NGR: SJ2247507403

Period: Modern

Broadclass: Recreational

Form:

Condition:

Survival:

Site Status:

SAM number:

LB number:

grade:

Trysor

Description:

Rarity:

**Distance from
development:**

Group Value:

Evidential Value:

Historical Value:

Aesthetic Value:

Communal Value:

Setting:

Significance: Locally Important

**Any Direct
Impact?:** No
None

**Any Indirect
Impact?:** No
None

**Level of Impact
on Setting:** None

**Comment on
Impact:** No impact

ID Number: 45

HER PRN: 118424 **NMR NPRN:**

WELSHPOOL, BERRIEW STREET 2

HOUSE

NGR: SJ2250007465

Period: Post Medieval

Broadclass: Domestic

Form:

Condition:

Survival:

Site Status:

SAM number:

LB number:

grade:

Trysor

Description:

Rarity:

**Distance from
development:**

Group Value:

Evidential Value:

Historical Value:

Aesthetic Value:

Communal Value:

Setting:

Significance: Locally Important

**Any Direct
Impact?:** No
None

**Any Indirect
Impact?:** No
None

**Level of Impact
on Setting:** None

**Comment on
Impact:** No impact

ID Number: 46

HER PRN: 121769 **NMR NPRN:**

WELSHPOOL, BERRIEW STREET, SITE OF FORMER LION HOTEL

HOTEL

NGR: SJ2246307375

Period: Modern **Broadclass:** Commercial

Form: Destroyed Monument **Condition:** **Survival:**

Site Status:

SAM number: **LB number:** **grade:**

**Trysor
Description:**

Rarity:

**Distance from
development:
Group Value:**

Evidential Value:

Historical Value:

Aesthetic Value:

Communal Value:

Setting:

Significance: Locally Important

**Any Direct
Impact?:** No
None

**Any Indirect
Impact?:** No
None

**Level of Impact
on Setting:** None

**Comment on
Impact:** No impact

ID Number: 47

HER PRN: 141527 **NMR NPRN:**

WELSHPOOL, BERRIEW STREET, 'POOL'

POND

NGR: SJ2241307407

Period: Post Medieval

Broadclass: Water Supply and Drainage

Form:

Condition:

Survival:

Site Status:

SAM number:

LB number:

grade:

Trysor

Description:

Rarity:

**Distance from
development:**

Group Value:

Evidential Value:

Historical Value:

Aesthetic Value:

Communal Value:

Setting:

Significance: Minor Importance

**Any Direct
Impact?:** No
None

**Any Indirect
Impact?:** No
None

**Level of Impact
on Setting:** None

**Comment on
Impact:** No impact.

ID Number: 48

HER PRN: 141880 **NMR NPRN:**

MONTGOMERY CANAL, BRIDGE 119A

FOOTBRIDGE

NGR: SJ2255507194

Period: Modern

Broadclass: Transport

Form:

Condition:

Survival:

Site Status:

SAM number:

LB number:

grade:

Trysor

Description:

Rarity:

**Distance from
development:**

Group Value:

Evidential Value:

Historical Value:

Aesthetic Value:

Communal Value:

Setting:

Significance: Locally Important

**Any Direct
Impact?:** No
None

**Any Indirect
Impact?:** No
None

**Level of Impact
on Setting:** None

**Comment on
Impact:** No impact

ID Number: 49

HER PRN:

NMR NPRN:

POWIS CASTLE ESTATE

PARKLAND

NGR: SJ2227007060

Area centred

Period: Post Medieval

Broadclass: Gardens Parks and Open Spaces

Form: Complex

Condition: Very Good **Survival:** Near Intact

Site Status:

SAM number:

LB number:

grade:

Trysor

Description:

Rarity: Not rare

**Distance from
development:** Within

Group Value: Associated with Powis Castle

Evidential Value: Historic map evidence

Historical Value: Associated with the influential Powis Castle estate

Aesthetic Value: Designed and managed parkland

Communal Value: Some public access, highly visible and influential to the landscape character of the district

Setting: An extensive area of managed parkland surrounding Powis Castle, in an undulating landscape, to the western side of the Severn Valley, south of Welshpool.

Significance: Nationally Important

**Any Direct
Impact?:** Yes
Very Low

**Any Indirect
Impact?:** Yes
Very Low

**Level of Impact
on Setting:** Very Low

**Comment on
Impact:** The development could lead to the loss of a small proportion of the area of the parkland and change some limited views of the northeastern corner of the parkland.

ID Number: 50

HER PRN:

NMR NPRN:

MAES Y FELIN WYNT, RIDGE AND FURROW

RIDGE AND FURROW

NGR: SJ2234307157 Area centred
Period: Medieval **Broadclass:** Agriculture and Subsistence
Form: Documentary Evidence **Condition:** Poor **Survival:** Damaged
Site Status:

Trysor
Description:

SAM number:	LB number:	grade:
--------------------	-------------------	---------------

Rarity: Not rare

Distance from development: Within

Group Value: Possibly associated with a broad linear earthwork at their southern extent

Evidential Value: LiDAR imagery; Earthwork

Historical Value: None

Aesthetic Value: None

Communal Value: None

Setting: This fragment of medieval or early post medieval cultivation is found within a pasture field which has been part of the Powis Castle estate since at least the 19th century.

Significance: Minor Importance

Any Direct Impact?: Yes
Very High

Any Indirect Impact?: No
None

Level of Impact on Setting: None

Comment on Impact: These slight earthworks would be lost to the development

ID Number: 51

HER PRN:

NMR NPRN:

MAES Y CASTLE, BANK

BANK (EARTHWORK)

NGR: SJ2220107111

Linear

Period: Post Medieval

Broadclass: Agriculture and Subsistence

Form: Earthwork

Condition: Poor

Survival: Damaged

Site Status:

SAM number:

LB number:

grade:

Trysor

Description:

Rarity: Common

Distance from development: 125 metres to the west-southwest

Group Value: Part of the post-medieval field system within the Powis Castle parkland.

Evidential Value: Historic mapping; Earthwork

Historical Value: Shown in historic maps

Aesthetic Value: None

Communal Value: None

Setting: A denuded earthwork boundary bank runs west-northwest to east-southeast across this area of parkland at the northeastern corner of the Powis Castle estate.

Significance: Minor Importance

Any Direct Impact?: No
None

Any Indirect Impact?: No
None

Level of Impact on Setting: None

Comment on Impact: A modest development would be seen against existing development and would not have any meaningful impact on this denuded field boundary bank.

ID Number: 52

HER PRN:

NMR NPRN:

OLDFORD, BANK (EARTHWORK)

BANK (EARTHWORK)

NGR: SJ2231507090

Linear

Period: Post Medieval

Broadclass: Agriculture and Subsistence

Form: Earthwork

Condition: Poor

Survival: Near Destroyed

Site Status:

SAM number:

LB number:

grade:

**Trysor
Description:**

Rarity: Common

**Distance from
development:** Partially within

Group Value: Unknown

Evidential Value: Earthwork

Historical Value: None

Aesthetic Value: None

Communal Value: None

Setting: A linear feature is seen on LiDAR images running generally from northeast to southwest in the parkland to the west of the Oldford housing estate.

Significance: Minor Importance

**Any Direct
Impact?:** Yes
Moderate

**Any Indirect
Impact?:** No
None

**Level of Impact
on Setting:** None

**Comment on
Impact:** A short length of this now very denuded bank would potentially be lost to the development.

ID Number: 53

HER PRN:

NMR NPRN:

POWIS CASTLE ESTATE, AVENUE

AVENUE

NGR: SJ2220407021 Linear
Period: Post Medieval **Broadclass:** Gardens Parks and Open Spaces
Form: Documentary Evidence **Condition:** Very Poor **Survival:** Near Destroyed
Site Status:

SAM number: **LB number:** **grade:**
Trysor
Description:

Rarity: Not common

Distance from development: 120 metres to the southwest

Group Value: Part of the Powis Castle estate

Evidential Value: Earthwork;LiDAR

Historical Value: Shown on a 17th century map

Aesthetic Value: None

Communal Value: None

Setting: A denuded earthwork feature within the Powis Castle parkland.

Significance: Locally Important

Any Direct Impact?: No
None

Any Indirect Impact?: No
None

Level of Impact on Setting: None

Comment on Impact: A modest development would be seen against existing development from this location and would not create a negative impact.

Appendix B: Photographs

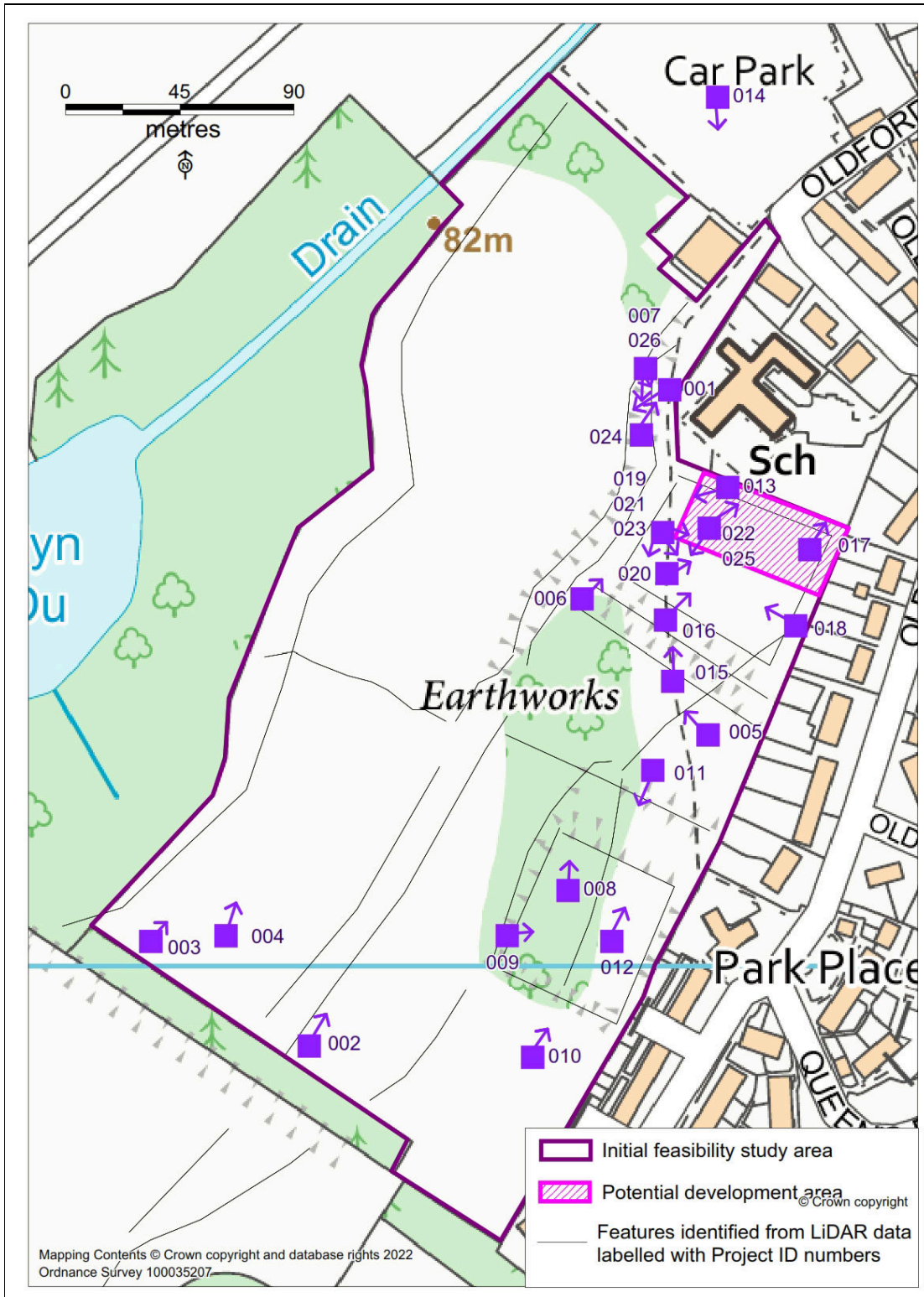


Figure 13: Location and direction of photographs



Plate 1 (OLD2022_001): A view from the northern edge of the feasibility area looking towards Powis Castle, which is seen through a gap in the trees in the distance. Hollow way, ID number 4, is seen in the foreground. Looking southwest.



Plate 2 (OLD2022_002): A view through the northwestern side of the feasibility area. A view of the Family Centre at Oldford is just visible through the trees right of centre. Looking north-northeast.



Plate 3 (OLD2022_003): A view through the northwestern side of the feasibility area. The roof of the Family Centre at Oldford is visible through the trees right of centre. The tower of St Marys church, PRN 5504, is partially visible left off centre. Looking northeast.



Plate 4 (OLD2022_004): A view through the northwestern side of the feasibility area. The tower of St. Mary's Church, Welshpool, PRN 5504, is visible through the trees at the centre of the image. The Family Centre is not visible in this view. Looking north-northeast.



Plate 5 (OLD2022_005): A view across the feasibility area. The hollow way ID number 4 is seen crossing the centre of the image. Looking northwest.



Plate 6 (OLD2022_006): A view of the Family Centre at Oldford, outside the northern edge of the feasibility area. This view includes the potential development area. Looking north-northeast.



Plate 7 (OLD2022_007): A view of hollow way ID number 4. Looking south.



Plate 8 (OLD2022_008): A view of the remaining trees of the former Maes y Castle Wood at the southeastern side of the feasibility area. Looking north.



Plate 9 (OLD2022_009): A view of one of the mature oak trees within Maes y Castle Wood. The wood seems to have been planted after the Bleaze estate map of 1629 but was in existence by the time of the 1840 parish tithe map. Looking east.



Plate 10 (OLD2022_010): A view across the earthwork platform ID number 2 at the southeastern side of the feasibility area. The slight ditch in the foreground is the southern side of the feature. Looking north-northeast.



Plate 11 (OLD2022_011): A view of the earthwork platform ID number 2 at the southeastern side of the feasibility area. The slight bank across the centre of the image is the northern side of the feature. Looking south-southwest.



Plate 12 (OLD2022_012): A view from the earthwork platform ID number 2 at the southeastern side of the feasibility area. The modern houses of the Oldford housing estate are seen to the centre and right. Looking north-northeast.



Plate 13 (OLD2022_013): A view from the potential development area to the south of the Family Centre which may be suitable for development from a heritage view. Powis Castle is not visible in the distance due to mature trees blocking views southwards. The earthwork hollow way ID number 4 is seen to the right of centre. Looking southwest.



Plate 14 (OLD2022_014): A view of the Scout Headquarters at the southern end of the Berriew Street Car Park, looking towards the feasibility area. Trees block all views of the area from this direction. Looking south.



Plate 15 (OLD2022_015): A view towards the northeast corner of the feasibility area with two large beeches (remnants of Quaker's Field Wood) screening the view of the Family Centre outside the parkland boundary. Looking north.



Plate 16 (OLD2022_016): A view towards the northeast corner of the feasibility area, with the Family Centre seen in the sheltered hollow at the parkland boundary. The potential development area lies in this hollow. Looking north-northeast.



Plate 17 (OLD2022_017): A view of the modern northern boundary of the parkland at the northeast corner of the feasibility area showing the access road of the Family Centre outside the boundary. This road could give access to a modest development within the parkland boundary. Looking north-northeast.



Plate 18 (OLD2022_018): A view across the hollow at the northeast corner of the feasibility area. This limited area might be considered suitable for a modest development. Looking west-northwest.



Plate 19 (OLD2022_019): A view across the hollow at the northeast corner of the feasibility area, with the houses of the Oldford estate beyond the boundary. This limited area might be considered suitable for a modest development. Looking east-southeast.



Plate 20 (OLD2022_020): A view within the hollow at the northeast corner of the feasibility area. Note the electricity pole in the hollow. This limited area might be considered suitable for a modest development. Looking east-northeast.



Plate 21 (OLD2022_021): A view from the hollow to the south of the Family Centre towards the higher ground at the southeast corner of the feasibility area. Looking south-southeast..



Plate 22 (OLD2022_022): A view across the proposed development area from within the hollow at its northeast corner, showing that Powis Castle is not in view. Looking south-southwest.



Plate 23 (OLD2022_023): A view across the feasibility area from within the hollow at its northeast corner, showing the surviving trees of Maes y Castle/Quaker's Field Woods on the higher ground at the southeast side of the area. Looking south.



Plate 24 (OLD2022_024): A view of the former roadway, ID number 4, now a hollow way, which gives access to the parkland and feasibility area from the direction of Welshpool town. Looking north-northeast.



Plate 25 (OLD2022_025): A view of the Family Centre outside the northern boundary of the parkland and potential development area. Looking northeast.



Plate 26 (OLD2022_026): A view of the sheltered hollow to the south of the Family Centre where a modest development may be considered possible. Looking southeast.

Appendix C: Written Scheme of Investigation

**WRITTEN SCHEME OF INVESTIGATION FOR AN
HISTORIC ENVIRONMENT DESK-BASED ASSESSMENT
FOR POTENTIAL DEVELOPMENT ON LAND
ADJACENT TO THE OLDFORD ESTATE, WELSHPOOL SY21 7TE**

Contents

1	Introduction	1
2.	The Development	1
3.	Planning Context	1
4.	Objective of the Written Scheme of Investigation	1
5.	Nature of the Archaeological Resource	3
6.	Scope of Work & Methodology	3
7.	Reporting	5
8.	Health & Safety	5
9.	Public Benefit and Outreach	5
10.	Archive	6
11.	Resources to be used	6
12.	Qualification of personnel	6
13.	Insurance & Professional indemnity	7
14.	Project identification	7
15.	Sources	7
	Appendix 1: Selection Strategy	8
	Appendix 2: Database Management Plan	16

**WRITTEN SCHEME OF INVESTIGATION FOR AN
HISTORIC ENVIRONMENT DESK-BASED ASSESSMENT
FOR POTENTIAL DEVELOPMENT ON LAND
ADJACENT TO THE OLDFORD ESTATE, WELSHPOOL SY21 7TE**

1. Introduction

1.1 Louise Evans, Senior Planning Coordinator at Powys County Council has commissioned Trysor heritage consultants to undertake an historic environment desk-based assessment, including a potential impact on setting of designated historic assets, as part of the scoping process for a potential development at SJ2228007132 on land adjacent to the Oldford Estate, Welshpool, SY21 7TE.

2. The development

2.1 The potential development would be for an affordable housing scheme on land adjacent to the Oldford Estate, Welshpool, at SJ2228007132. The scheme is still in the feasibility stages and this desk-based assessment is part of that process.

3. Planning context of the proposed development

3.1 The scheme is still in the feasibility stages.

4. Objective of the Written Scheme of Investigation

4.1 The objective of this written scheme of investigation (WSI) is to specify the method to be used for a desk-based assessment in order to identify and assess impact, both direct and indirect, on the historic environment and historic assets. This includes the impact on setting of designated historic assets and impact on the Registered Historic Landscapes.

4.2 The Chartered Institute for Archaeologists' Standard and Guidance for Historic Environment Desk-based Assessment (CIfA, 2020) was used to write this Written Scheme of Investigation.

Historic Environment Desk-Based Assessment For
Potential Development on Land Adjacent to the
Oldford Estate, Welshpool, SY21 7TE

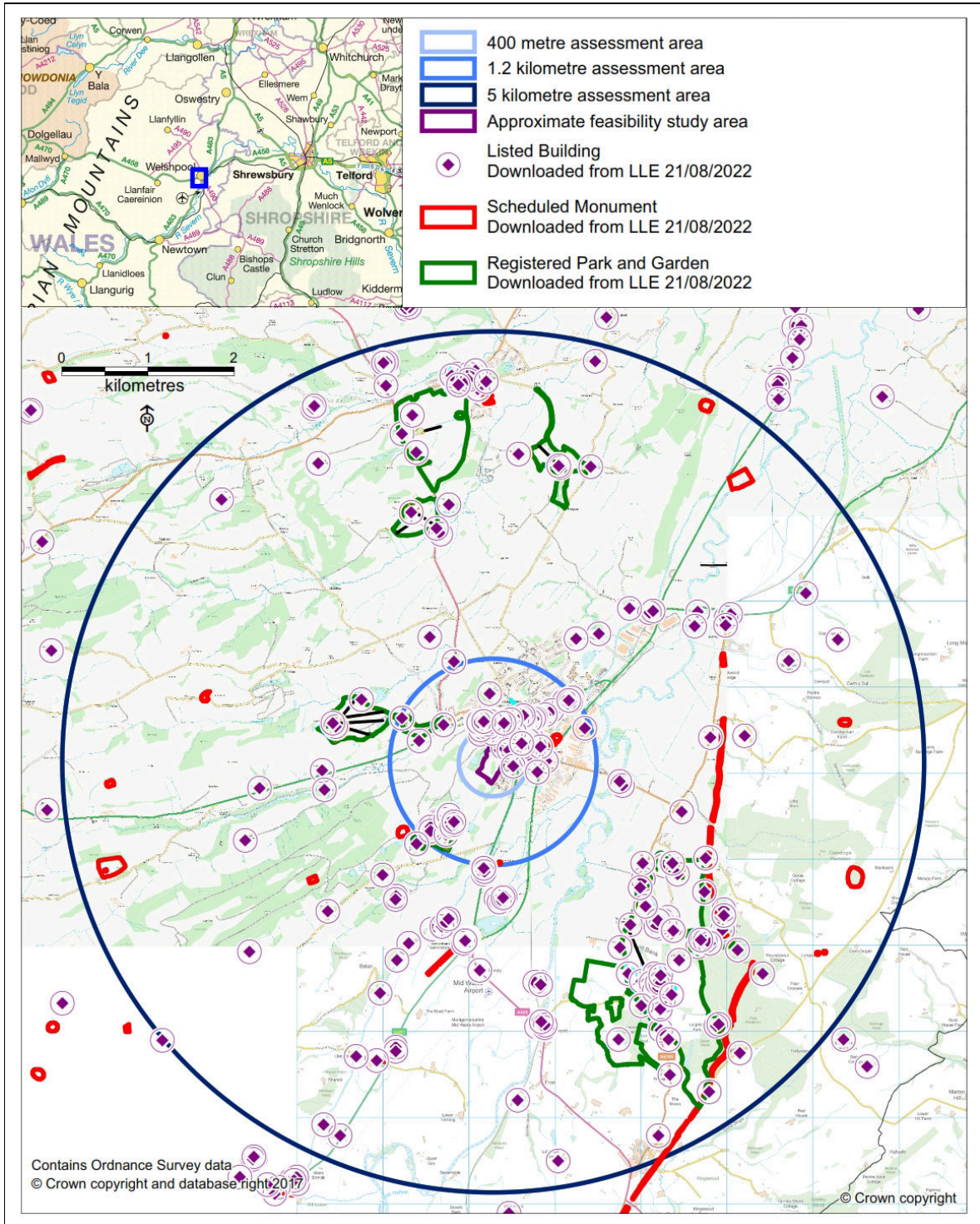


Figure 1: The approximate location of the development and the proposed 400 metre, 1.2 kilometre and 5 kilometre radius assessment areas centred on SJ2228007132.

5. Nature of the Archaeological Resource.

5.1 The feasibility site is on flat topped ridge running north-northeast to south-southwest on the western side of Welshpool and adjoining the park area of Powis Castle. To the south-southeastern side of the development is the Oldford housing estate which wraps around to the north-northeastern side. The remainder of the north-northeast side is bounded by a large car park which adjoins one of the main streets in Welshpool. A deciduous plantation lines the west-northwest side of the site within which is the Llyn Du pool and a narrow linear coniferous plantation defines the south-southwestern side.

5.2 The feasibility area slopes down to the gently to the north-northeast and more steeply to the west-northwest. It contains some mature trees and some earthwork features of unknown origin, including a holloway and a raised flat square area on the higher part of the site. The area is known from 17th century sources to have had a windmill although its exact location is not known.

5.3 On the 2nd edition 1:10560 Ordnance Survey map the feasibility site is shown as part of the parkland of Powis Castle.

6. Scope of Work & Methodology

6.1 The assessment will consider the known post-medieval historic assets within a 400 metre area centred on SJ2228007132. Known historic assets earlier than the post medieval period will be assessed within a 1.2 kilometres radius centre on SN2228007132.

6.1.1 As the size of the development is not currently known but the area being assessed for the feasibility study is over 6.5 hectares, the Cadw guidance on the setting of Historic Assets will be followed which recommends a 5 kilometre radius assessment area for assessing the impact on the setting of historic assets of national importance (Cadw, 2017, p.11). This will include Listed Buildings, Scheduled Monuments, Registered Parks and Gardens, Registered Historic Landscapes and World Heritage Sites. An initial assessment will remove those historic assets which have no intervisibility with the potential development site.

6.2 The following components of the historic environment will be considered, where relevant;

- a. Scheduled Monuments (SMs) and their settings.
- b. Listed buildings and their settings.
- c. Registered Parks and Gardens and their essential settings.
- d. Registered Historic Landscape
- e. World Heritage Sites
- f. Conservation Areas
- g. Previously recorded non-designated historic assets, and their settings
- h. Buildings identified as of Local Importance where such buildings have been identified
- i. Newly identified historic assets and their settings
- j. Historic Landscapes and their characterisation
- k. Hedgerows and field patterns
- l. Ancient woodland
- m. Place-name evidence
- n. Cumulative impacts

- o. Any agri-environmental interests or requirements, e.g. Environmental Stewardship or Countryside Stewardship scheme
- p. Potential for buried archaeological
- q. Potential for palaeoenvironmental evidence

6.3 The following data sources will be consulted:

- Clwyd Powys Historic Environment Record
- Cadw
- RCAHMW
- Historic Ordnance Survey maps
- Other historic maps including tithe map
- Aerial photographs
- LiDAR data if available
- Registered Historic Landscape and Character Area data if applicable
- LANDMAP
- Documentary sources
- Published journals

6.4 A site visit will be carried out in accordance with Chartered Institute for Archaeologists' *Standard and Guidance for an Historic Environment Desk-based Assessment (CIfA, 2020)*. The site visit will record any significant unknown features in the vicinity of the proposed development. It will assess the condition of known historic assets and an examination of the impact of development on them. It will be used to assess the setting of historic assets and whether any impact on that setting impacts on the significance of the historic asset in line with Cadw guidance.

6.5 Colour digital photographs will be taken, using a 16M pixel camera. A written record will be made on site of the photographs taken. Appropriate photographic scales will be used.

6.6 Elevation profiles, in conjunction with photos from the site visit and aerial photos, will be used to assess intervisibility, views and impact on setting. ZTV and photomontages from the client will be used if available. If a ZTV is not available Trysor will create one.

6.7 Once the dataset of existing and new data has been created, the significance of all identified historic assets will be assessed considering their evidential, historical, aesthetic and communal values (Cadw, 2010) and their setting (Cadw, 2017).

6.8 An assessment will be made of the development's potential impact on all historic assets, including direct physical, indirect physical, and indirect visual impacts. This will include impact on the significance of all nationally important historic assets whether designated or not.

6.9 The potential for buried archaeology will also be assessed, drawing on data within the assessment area, and the wider landscape.

7. Reporting

7.1 A written report will be submitted to the client to inform the current planning application. The report will include;

- a. a non-technical summary

- b. a site location plan
- c. a bibliography
- d. a gazetteer of all historic assets included in the assessment giving significance and impact, with descriptions.
- e. an assessment of the value and significance of each historic asset including setting
- f. an assessment of the impact of the development on the historic assets of the study area – impacts will be assessed whether negative, positive or neutral, direct or indirect.
- g. statement of the local and regional context of the historic assets identified as have being impacted on by the development.
- h. statement on reliability of resources used during assessment.
- i. potential for buried archaeological features within the development plot

7.2 The report will be guided by the requirements of Annexe 2 of the Chartered Institute for Archaeologists' *Standard and Guidance for an Historic Environment Desk-based Assessment*. Copies of the report will be provided to the client and the Regional Historic Environment Record.

8. Health & Safety

8.1 Trysor will undertake a risk assessment in accordance with their health and safety policy. This will take into account current Covid 19 regulations and guidance. In particular the following will be adhered to:

9. Public Benefit and Outreach

9.1 A summary of the work undertaken and its findings will be submitted to *Archaeology in Wales*, the annual review of archaeological work in Wales collated the Council for British Archaeology Wales (CBA Wales), if appropriate.

9.2 The results of the work will be deposited in the NMR making it publicly accessible. The report will also be deposited with the regional Historic Environment Record (HER) making it publicly accessible. This will be in line with recent guidance from The Welsh Archaeological Trusts (WAT, 2018).

9.3 The purpose of the work and the history of the site will be discussed with the client and others in order to widen understanding of why the work is important and broaden appreciation for the historic environment.

10. Archive

10.1 The paper and digital archive will be deposited with the National Monuments Record, including a copy of the final report in accordance with the CIfA's *Standard and Guidance for the creation, compilation, transfer and deposition of archaeological archives* (CIfA, 2020) and *The National Standard and Guidance to Best Practice for Collecting and Depositing Archaeological Archives in Wales 2017* (NPAAW, 2017). This archive will include all written, drawn and photographic records relating directly to the investigations undertaken. Digital archives will follow the standard required by the RCAHMW (RCAHMW, 2015). A selection strategy and a data management plan are included in Appendices 1 and 2.

10.2 Artefacts are unlikely from a desk-based assessment but any artefacts will be returned to the landowner after recording and reporting. If they are considered to be regionally or nationally important discussions about depositing the artefacts in a recognised museum archive will be held with the client.

11. Resources to be used

11.1 Jenny Hall, BSC, MCIfA and Paul Sambrook, BA, PGCE, MCIfA of Trysor will undertake the desk-based assessment. During the field visit will be equipped with standard field equipment, including digital cameras, GPS and first aid kit. Trysor have access to the computer hardware and software required to deliver the completed final report and archive to a professional standard.

12. Qualification of personnel

12.1 Trysor is a Registered Organisation with the Chartered Institute for Archaeologists and both partners are Members of the Chartered Institute for Archaeologists, www.archaeologists.net

12.2 Jenny Hall (BSc Joint Hons., Geology and Archaeology, MCIfA) had 12 years excavation experience, which included undertaking watching briefs prior to becoming the Sites and Monuments Record Manager for a Welsh Archaeological Trust for 10 years. She has been a partner in Trysor since 2004 undertaking a variety of work that includes upland field survey, desk-based appraisals and assessments, watching briefs and evaluations as well heritage interpretation and community-based projects.

12.3 Paul Sambrook (BA Joint Hons., Archaeology and Welsh, MCIfA, PGCE) has extensive experience as a fieldworker in Wales. He was involved with Cadw's pan-Wales Deserted Rural Settlements Project for 7 years. He also undertook Tir Gofal field survey work and watching briefs. He has been a partner in Trysor since 2004 undertaking a variety of work including upland field survey, desk-based appraisals/assessments, watching briefs and evaluations as well as community-based, non-intrusive projects and community heritage interpretation.

13. Insurance & Professional indemnity

13.1 Trysor has Public Liability, Employers Liability and Professional Indemnity Insurance.

14. Project identification

14.1 The project has been designated Trysor Project No. 2022/848. The site code will be OLD2022, and it will be recorded in the regional HER under PRN 167123.

15. Sources

Cadw, 2011, Conservation Principles

Cadw, 2017, *Guidance on the Setting of Historic Assets*

CIfA, 2020, *Standard and Guidance for an Historic Environment Desk-based Assessment.*

CIfA, 2020, *Standard and Guidance for the creation, compilation, transfer and deposition of archaeological archives*

NPAAW, 2017, *The National Standard and Guidance to Best Practice for Collecting and Depositing Archaeological Archives in Wales*

WAT, 2018, *Guidance for the Submission of Data to the Welsh Historic Environment Records (HERs)*

Jenny Hall & Paul Sambrook
Trysor,
August 2022

APPENDIX D: ARCHIVE SELECTION STRATEGY

OLDFORD, WELSHPOOL DBA

20/08/2022 v.1

Archive Selection Strategy

Project Information		
Project Management		
Project Manager	Jenny Hall & Paul Sambrook	
Archaeological Archive Manager	Jenny Hall & Paul Sambrook	
Organisation	Trysor	
Stakeholders		Date Contacted
Collecting Institution(s) <i>A collecting institution for artefacts will only be contacted in advance of site work, if the potential for artefacts from sealed contexts is assessed as Moderate to Very High. The scale of field work and where it is situated geographically will be considered when making this initial assessment</i>	Digital /paper archive to be archived with RCAHMW, with copies to HER if they wish. Artefacts not expected during a DBA	Not contacted
Project Lead / Project Assurance	Jenny Hall and Paul Sambrook	
Landowner / Developer	See WSI	
Other	-	
Resources		
Resources required Describe the resources required to implement this Selection Strategy, particularly if unusual resources are required.	No unusual resources required.	
Context		
Describe below the context of this Selection Strategy. You should refer to: <ul style="list-style-type: none"> The aims and objectives of the project; 		

- Local Authority guidance (including the brief);
- Research Frameworks;
- The repository collection development policy and/or deposition policy;
- Material-specific guidance documents.

Note: This section may be copied from your Project Design/WSI to ensure all Stakeholders receive this context information.

- The aims and objectives of the project are to record and protect the historic environment in order to inform decisions by the planning authority and Cadw.
- The methodology to be used and its context is given in this Written Scheme of Investigation.
- The Research Framework for the Archaeology of Wales identifies areas of past, current and future archaeological research in Wales <https://www.archaeoleg.org.uk/intro.html>
No specific themes are connected with this project at present
- As this is a DBA there should be no artefacts. If necessary a suitable artefact archive will be identified using *National Standards for the Collecting and Depositing of Archaeological Archives in Wales 2017*, Part 6. Museums in Wales Collecting Archaeology

Stakeholders

Name the individual(s) responsible for the Digital Data Selection decisions (i.e. Archaeological Archive Manager, Project Manager, Collections Curator).

Jenny Hall & Paul Sambrook

Selection

Location of Data Management Plan (DMP)

Selection of digital data elements should be considered in your project's DMP. For the purpose of the Selection Strategy, you can either copy the selection section of your DMP below, or attach it as an appendix to this document. Please indicate here if the DMP is attached.

Appendix B of this WSI

The selection strategy in your DMP should:

- 1.1 Define what digital data will be selected for inclusion in the archaeological archive, how this will be done, and why. Do not forget to consider that specialists may have digital data that should be included in the archaeological archive.
- 1.2 Identify the selection review points during the project (i.e. project planning, data gathering, analysis and reporting and archive compilation).
- 1.3 Reference all relevant standards, policies or guidelines (e.g. digital repository deposition requirements) and specialist advice sought.
- 1.4 Identify any selection decisions that differ from standard guidelines and explain why.

a) Final report as pdf file which will include WSI

b) Selected and catalogued photographs as Tiffs file

Additional files may include

- c) Vector GIS files as .shp files
- d) Drawings as .pdf files
- e) Scanned site notes as pdf

NPAAW, 2017, *The National Standard and Guidance to Best Practice for Collecting and Depositing Archaeological Archives in Wales 2017*

RCAHMW, 2015, *RCAHMW guidelines for Digital Archives, Version 1*

WAT, 2018, *Guidance for the Submission of Data to the Welsh Historic Environment Records (HERs)*

De-Selected Digital Data

The procedure for dealing with De-selected digital data and what specialist advice informed this process should be recorded in your DMP. Please copy this information here or attach your DMP as an appendix to this document.

See Appendix 2 in this WSI

Amendments

Detail any amendments to the above selection strategy here. The Selection Strategy will be reviewed after fieldwork is complete when the digital data created will be clearer

Date	Amendment	Rationale	Stakeholders

2 – Documents

Stakeholders

Name the individual(s) responsible for the Documents Selection decisions (i.e. Archaeological Archive Manager, Project Manager, Repository Representative).

Jenny Hall & Paul Sambrook

Selection

Describe your Selection Strategy for the Documents elements of the archaeological archive. To do this you must:

- 2.1 Define which documents will be selected for inclusion in the archaeological archive, how this will be done, and why. Do not forget to consider that specialists may have documents that should be included in the archaeological archive.
- 2.2 Identify the selection review points during the project (e.g. project planning, data gathering, analysis and reporting and archive compilation).
- 2.3 Reference all relevant standards, policies or guidelines (e.g. digital repository deposition requirements)

and specialist advice sought.

2.4 Identify any selection decisions that differ from standard guidelines and explain why.

a) Final report as pdf file which will include WSI and any specialist reports if needed. This is the version sent to client and approved by third parties. Specialist reports will be contained within that report

b) Selected and catalogued photographs as Tiffs file

Additional files may include: to be reviewed after site work

c) Vector GIS files as .shp files

d) Drawings as .pdf files

e) Scanned context sheets/site notes as pdf

NPAAW, 2017, The National Standard and Guidance to Best Practice for Collecting and Depositing Archaeological Archives in Wales 2017

RCAHMW, 2015, RCAHMW guidelines for Digital Archives, Version 1

WAT, 2018, Guidance for the Submission of Data to the Welsh Historic Environment Records (HERs)

De-Selected Documents

Describe the procedure for dealing with De-selected material and what specialist advice has informed this procedure.

Deselected digital documents will be retained within Trysor backups.
The process is one of selection rather than deselection.

Amendments

Detail any amendments to the above selection strategy here.

Date	Amendment	Rationale	Stakeholders

3 – Materials

Note: This step should be completed for each material component of the archaeological archive. Copy this table for the various materials as required, providing the ‘Material Type’ and a section identifier (eg. ‘3.1’) for each.

Material type	Digital	Section 3.1	
----------------------	---------	--------------------	--

Stakeholders

Name the individual(s) responsible for the Materials Selection decisions (i.e. Archaeological Archive Manager, Project Manager, Repository Representative).

Jenny Hall & Paul Sambrook

Selection

Describe your Selection Strategy for each material type and or object type. To do this you must:

- 3.1 State the Selection Strategy you are applying to each category of material, how this will be done, and why.
- 3.2 Identify the selection review points during the project (e.g. project planning, data gathering, analysis and reporting and archive compilation).
- 3.3 Reference all relevant standards, policies or guidelines (e.g. thematic, period, and regional, Research Frameworks, repository deposition policies) and specialist advice sought.
- 3.4 Identify any selection decisions that differ from standard guidelines and explain why.

The Materials Selection Template may be useful in structuring this section.

As described in the Data Management Plan and above

Uncollected Material

If you are practising selection in the field, describe the process that will be applied. To do this you must:

- Detail how you will characterise, quantify and record all uncollected material on site.
- Explain how you will dispose of, or re-distribute, uncollected material.

Not applicable

De-Selected Material

Describe what you will do with the de-selected material. All processed material should have been adequately recorded before de-selection.

Kept within Trysor backups

Amendments

Detail any amendments to the above selection strategy here.

Date	Amendment	Rationale	Stakeholders

3 – Materials

Note: This step should be completed for each material component of the archaeological archive. Copy this table for the various materials as required, providing the ‘Material Type’ and a section identifier (eg. ‘3.1’) for each.

Material type	Paper	Section 3.2	
----------------------	-------	--------------------	--

Stakeholders

Name the individual(s) responsible for the Materials Selection decisions (i.e. Archaeological Archive Manager, Project Manager, Repository Representative).

Jenny Hall & Paul Sambrook

Selection

Describe your Selection Strategy for each material type and or object type. To do this you must:

- 4.1 State the Selection Strategy you are applying to each category of material, how this will be done, and why.
- 4.2 Identify the selection review points during the project (e.g. project planning, data gathering, analysis and reporting and archive compilation).
- 4.3 Reference all relevant standards, policies or guidelines (e.g. thematic, period, and regional, Research Frameworks, repository deposition policies) and specialist advice sought.
- 4.4 Identify any selection decisions that differ from standard guidelines and explain why.

The Materials Selection Template may be useful in structuring this section.

Field notes– bound and presented as paper archive

Uncollected Material

If you are practising selection in the field, describe the process that will be applied. To do this you must:

- Detail how you will characterise, quantify and record all uncollected material on site.
- Explain how you will dispose of, or re-distribute, uncollected material.

De-Selected Material

Describe what you will do with the de-selected material. All processed material should have been adequately recorded before de-selection.

Kept within Trysor archive folders

Amendments

Detail any amendments to the above selection strategy here.

Date	Amendment	Rationale	Stakeholders

Jenny Hall and Paul Sambrook
Trysor
www.trysor.net

38, New Road,
Gwaun Cae Gurwen
Ammanford
Carmarthenshire
SA18 1UN
enquiries@trysor.net

APPENDIX 2: DATA MANAGEMENT PLAN

OLDFORD, WELSHPOOL DBA

20/08/2022 v.1.0

Data Management Plan

This document forms part of the Work Digital / Think Archive guidance for digital archives prepared by DigVentures, on behalf of Archaeological Archives Forum and in partnership with the Chartered Institute for Archaeologists. The project was funded by Historic England (Project No. 7796).

This has been adapted by Trysor for use.

Section 1: Project Administration
<ul style="list-style-type: none"> • Key project details, unique identifiers and contacts <p>See main part of WSI</p>
Section 2: Data Collection
<ul style="list-style-type: none"> • What data will you collect or create? • How will the data be collected or created? <p>See main part of WSI and Appendix 1</p>
Section 3: Documentation and Metadata
<ul style="list-style-type: none"> • What documentation and metadata will accompany the data? <p>Photo catalogue in report, appropriate metadata</p>
Section 4: Ethics and Legal Compliance
<ul style="list-style-type: none"> • How will you manage any ethical, copyright and Intellectual Property Rights (IPR) issues? <p>A statement will be included in the report. The report will be the copyright of Trysor. Other copyrights/rights will be identified acknowledged.</p>
Section 5: Storage and Backup
<ul style="list-style-type: none"> • How will the data be stored, accessed and backed up during the research? <p>Through online storage via Dropbox, Backups onto partners external hard drives</p>
Section 6: Selection and Preservation
<ul style="list-style-type: none"> • Which should be retained, shared, and/or preserved? • What is the long-term preservation plan for the dataset? • Have you contacted the data repository? • Have the costs of archiving been fully considered? <p>Data repository (NMR) not contacted yet, small project The main digital elements to be preserved long term are the report and the photographs. The database will be sent to the Her in order to inform updating the HER Costs of archiving have been considered – None</p>
Section 7: Data Sharing and Accessibility
<ul style="list-style-type: none"> • How will you share the data and make it accessible? • Are any restrictions on data sharing required? <p>Through archiving in NMR and in the regional HER – no restrictions other than acknowledgement</p>
Section 8: Responsibilities
<ul style="list-style-type: none"> • Who will be responsible for data management?

Jenny Hall & Paul Sambrook

Section 1: Project Administration

Project ID / OASIS ID
Not Applicable – HER Event Record PRN – DAT 167123
Project Name
See main part of WSI
Project Description
See main part of WSI
Project Funder / Grant reference
Client
Project Manager
Jenny Hall & Paul Sambrook
Principal Investigator / Researcher
Jenny Hall & Paul Sambrook
Data Contact Person
Jenny Hall & Paul Sambrook
Date DMP created
Jenny Hall & Paul Sambrook
Date DMP last updated
20 th August 2022
Version
1.0
Related data management policies
NPAAW, 2017, <i>The National Standard and Guidance to Best Practice for Collecting and Depositing Archaeological Archives in Wales 2017</i>
RCAHMW, 2015, <i>RCAHMW guidelines for Digital Archives</i> , Version 1
WAT, 2018, <i>Guidance for the Submission of Data to the Welsh Historic Environment Records (HERs)</i>

Section 2: Data Collection

What data will you collect or create?
Site notes Photographs and catalogue Access database GIS data for use during project – MapInfo Report – Word doc and pdf
How will the data be collected or created?
Site notes on paper written on site Photographs taken and listed on site, selected and catalogued in the office. Tiff files Report written in Word, GIS components in MapInfo, database elements in Microsoft Access. Report drawn together as a pdf from separate elements.

Section 3: Documentation and metadata

What documentation and metadata will accompany the data?
The report will accompany any data. Relevant metadata will be created in line with guidance.

Section 4: Ethics and legal compliance

How will you manage any ethical, copyright and Intellectual Property Rights (IPR) issues?

Appropriately taking into account other peoples rights. All agreements with others will be adhered to, in particular the agreement regarding HER data. HER descriptions will not be included in the report – Trysor will write a description for each historic asset from a project perspective.
--

Section 5: Data Security: Storage and Backup

How will the data be stored, accessed and backed up during the research?
--

Shared Dropbox with facility to retrieve earlier versions. Locally backed up on partners' external hard drive

Section 6: Selection and Preservation

Which data should be retained, shared, and/or preserved?
--

Report, Catalogued Photographs, Access database

What is the long-term preservation plan for the dataset?
--

Digital/paper deposition with RCAHMW – Report and Access database to the HER for them to update records

Have you contacted the data repository?

No – not necessary

Have the costs of archiving been fully considered?
--

No costs as RCAHMW not currently charging

Section 7: Data Sharing

How will you share the data and make it accessible?

Deposit in RCAHMW, with an additional copy to the regional HER
--

Are any restrictions on data sharing required?
--

No, other than our copyright should be respected.

Section 8: Responsibilities

Who will be responsible for implementing the data management plan?
--

Trysor partners
