

DYDDIO HEN DAI CYMREIG

DATING OLD WELSH HOUSES

PROSIECT DENDROCRONOLEG
GOGLEDD ORLLEWIN CYMRU



NORTH WEST WALES
DENDROCHRONOLOGY PROJECT

North West Wales Dendrochronology Project
DATING OLD WELSH HOUSES

Penhyddgan, Boduan, Gwynedd

ARCHITECTURAL RECORD



in partnership with



Adam Voelcker
MA (Cantab) Dip Arch
Pant Glas Uchaf
Pant Glas
Garndolbenmaen
Gwynedd LL51 9DQ

North West Wales Dendrochronology Project

Penhyddgan, Boduan (Gwynedd)

Introduction

This report contains the results of a survey undertaken to complement the proposed dating of timbers at Penhyddgan, Boduan, as part of the North West Wales Dendrochronology Project. The survey was undertaken on 10 March 2010 by Adam Voelcker. Documentary research will be undertaken by volunteers to accompany this survey, and separate reports will be issued describing the results of the documentary survey and of the dendrochronology sampling.

Site particulars

Site address

Penhyddgan, Boduan, Pwllheli, Gwynedd LL53 8YH

NGR

SH 23024 33867

NPRN

16673

Listing status

Grade II*

Methodology

The attic plan, cross-section, truss elevations and details were measured and photographed on site, and the drawings drawn freehand from the photos and measurements.

References

Cadw listing description

Record No. 4269

(see Appendix)

RCAHMW Caernarvonshire Inventory

Vol.III (West). Entry no.1553 (pp 30-31) (inspected 1956)

(see Appendix)

Sources of information at the NMRW, Aberystwyth

- letter from Margaret Thompson (Catalogue No. C4545)
- sketch plan (C4546)
- RCAHMW sketch of screen (C11738)
- RCAHMW drawing, Fig.38 in Inventory (C11739)
- RCAHMW plan of house, Fig.58 in Inventory (C11740)
- plan and elevation (not RCAHMW) (C11741)
- sales particulars, 1987 (C432769)

Houses of the Welsh Countryside (Peter Smith)

included on maps

- map 27 (Regional house type A)

The Buildings of Wales: Gwynedd (Haslam, Orbach & Voelcker)

pp.271-2

(see Appendix)

Archaeologia Cambrensis

'A Master Carpenter in North Wales: some carved screens and associated inscriptions of the late-sixteenth century'

article by A. J. Parkinson in AC1975 (pp 73-101) and AC1976 (pp 169-171)

Notes of article, made by AV

Penhyddgan screen uncovered in 1976. Guilloche-moulded, with doors at each end. **W** initial carved, similar to that on a screen at Plasnewydd, Llanfair Talhaearn, Denbighshire. Probably date 1570-98, putting the date of the house back into the C16. Maybe from the workshop of the same carpenter of screens at Plas Iolyn, Pentrefoelas; Rhiwlas, Bala; Caerhun church (in S chapel, above E window, recording the completion of the building in 1591); Pencraig, Betws-y-coed; Plas Mawr, Conwy; and possibly Cyffdy Hall, Llanrwst.



Plate 1 South-west elevation

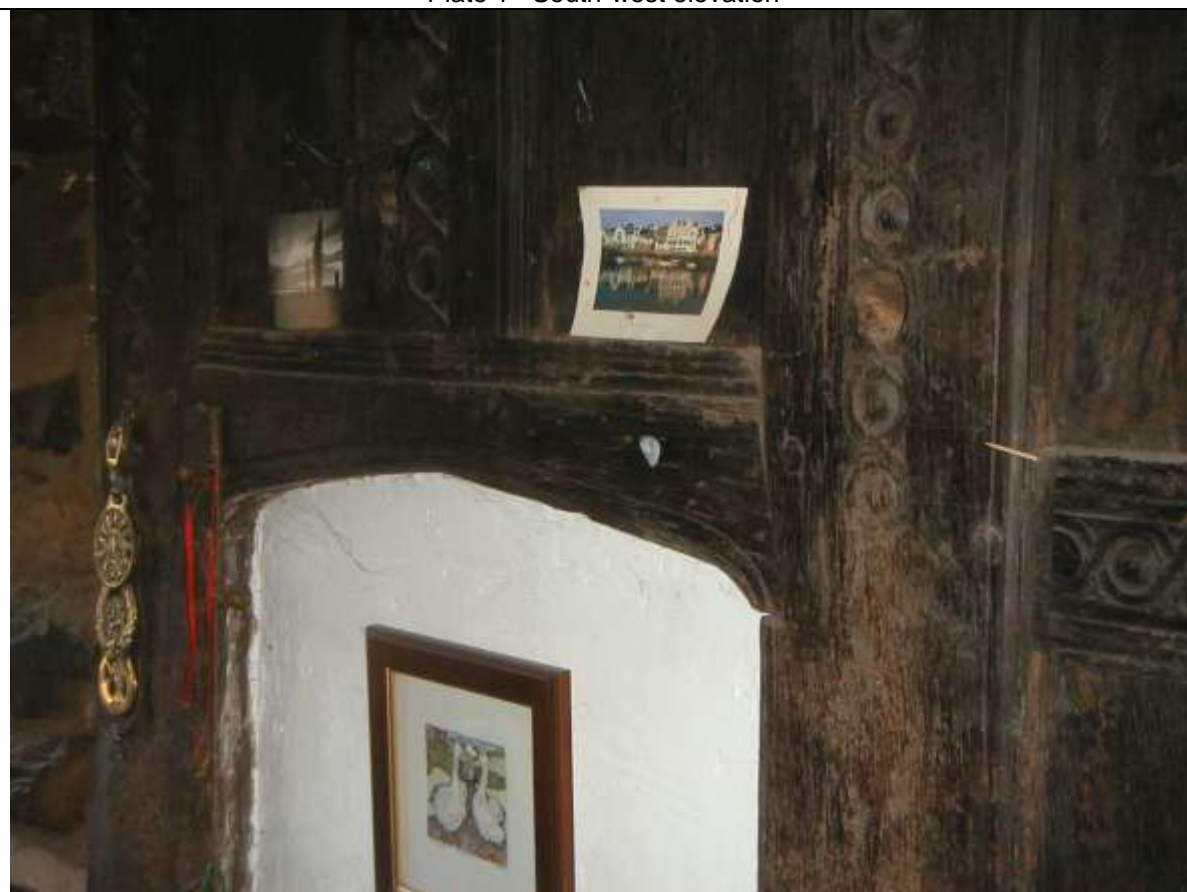


Plate 2 Screen doorway



Plate 3 Screen detail



Plate 4 Doorway detail



Plate 5 Truss 3 (porch roof)



Plate 6 Truss 1



Plate 7 Truss 2