

Oxford Dendrochronology Laboratory
Report 2011/6

**THE TREE-RING DATING OF
BRON GORONWY
CWM CYNFAL,
LLAN FFESTINIOG,
GWYNEDD
(NGR SH 718 411)**



Summary

A total of ten timbers were sampled in this building. One timber showed several growth depressions and could not be dated. Of the remaining nine series, one – a collar – was found to have been from a tree felled in summer 1477, whilst all the other roof timbers, and the top plate of a ground-floor screen appear to form a single group of timbers, most likely felled at the same time. Only one timber retained complete sapwood, and was found to have been from a tree felled in **winter 1530/31**. It seems likely therefore that construction took place in **1531**, or within a year or two after this date.

Authors: Dr M. C. Bridge FSA and Dr D. Miles FSA
Oxford Dendrochronology Laboratory
Mill Farm
Mapledurham
Oxfordshire
RG4 7TX

March 2011



A report commissioned by The North West Wales Dendrochronology Project in partnership with The Royal Commission on the Ancient and Historical Monuments in Wales (RCAHMW).

The Tree-Ring Dating of Bron Goronwy, Cwm Cynfal, Llan Ffestiniog, Gwynedd (NGR SH 718 411)

BACKGROUND TO DENDROCHRONOLOGY

The basis of dendrochronological dating is that trees of the same species, growing at the same time, in similar habitats, produce similar ring-width patterns. These patterns of varying ring-widths are unique to the period of growth. Each tree naturally has its own pattern superimposed on the basic 'signal', resulting from genetic variations in the response to external stimuli, the changing competitive regime between trees, damage, disease, management etc.

In much of Britain the major influence on the growth of a species like oak is, however, the weather conditions experienced from season to season. By taking several contemporaneous samples from a building or other timber structure, it is often possible to cross-match the ring-width patterns, and by averaging the values for the sequences, maximise the common signal between trees. The resulting 'site chronology' may then be compared with existing 'master' or 'reference' chronologies.

This process can be done by a trained dendrochronologist using plots of the ring-widths and comparing them visually, which also serves as a check on measuring procedures. It is essentially a statistical process, and therefore requires sufficiently long sequences for one to be confident in the results. There is no defined minimum length of a tree-ring series that can be confidently cross-matched, but as a working hypothesis most dendrochronologists use series longer than at least fifty years.

The dendrochronologist also uses objective statistical comparison techniques, these having the same constraints. The statistical comparison is based on programs by Baillie & Pilcher (1973, 1984) and uses the Student's *t*-test. The *t*-test compares the actual difference between two means in relation to the variation in the data, and is an established statistical technique for looking at the significance of matching between two datasets that has been adopted by dendrochronologists. The values of '*t*' which give an acceptable match have been the subject of some debate; originally values above 3.5 being regarded as acceptable (given at least 100 years of overlapping rings) but now 4.0 is often taken as the base value. It is possible for a random set of numbers to give an apparently acceptable statistical match against a single reference curve – although the visual analysis of plots of the two series usually shows the trained eye the reality of this match. When a series of ring-widths gives strong statistical matches in the same position against a number of independent chronologies the series becomes dated with an extremely high level of confidence.

One can develop long reference chronologies by cross-matching the innermost rings of modern timbers with the outermost rings of older timbers successively back in time, adding data from numerous sites. Data now exist covering many thousands of years and it is, in theory, possible to match a sequence of unknown date to this reference material.

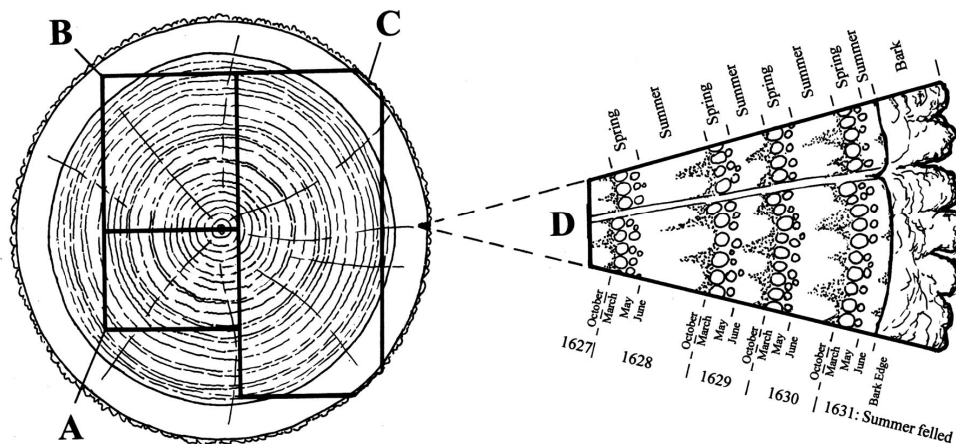
It follows from what has been stated above that the chances of matching a single sequence are not as great as for matching a tree-ring series derived from many individuals, since the process of aggregating



individual series will remove variation unique to an individual tree, and reinforce the common signal resulting from widespread influences such as the weather. However, a single sequence can be successfully dated, particularly if it has a long ring sequence.

Growth characteristics vary over space and time, trees in south-eastern England generally growing comparatively quickly and with less year-to-year variation than in many other regions (Bridge, 1988). This means that even comparatively large timbers in this region often exhibit few annual rings and are less useful for dating by this technique.

When interpreting the information derived from the dating exercise it is important to take into account such factors as the presence or absence of sapwood on the sample(s), which indicates the outer margins of the tree. Where no sapwood is present it may not be possible to determine how much wood has been removed, and one can therefore only give a date after which the original tree must have been felled. Where the bark is still present on the timber, the year, and even the time of year of felling can be determined. In the case of incomplete sapwood, one can estimate the number of rings likely to have been on the timber by relating it to populations of living and historical timbers to give a statistically valid range of years within which the tree was felled. For this region the estimate used is that 95% of oaks will have a sapwood ring number in the range 11 – 41 (Miles 1997).



Section of tree with conversion methods showing three types of sapwood retention resulting in **A** *terminus post quem*, **B** a felling date range, and **C** a precise felling date. Enlarged area **D** shows the outermost rings of the sapwood with growing seasons (Miles 1997, 42)

BRYN BERLLAN, CYNWYD

Bryn Goronwy is a storeyed Snowdonian house of classic type which, although externally modernised, retains many distinctive regional features. There is a fully-screened cross-passage (cf. Bryn-yr-odyn) with twin outer rooms. The blocked cross-passage doorway visible in the attached agricultural range has a door-head of voussiors. The hall retains a large gable-end fireplace with (later) fireplace stair



A report commissioned by The North West Wales Dendrochronology Project in partnership with The Royal Commission on the Ancient and Historical Monuments in Wales (RCAHMW).

alongside with stair light. The first floor has two intercommunicating chambers divided by a closed truss between open collar-beam trusses with raking struts. The principal (inner) chamber has a gable-end fireplace. (RFS/RCAHMW/APRIL 2011).

SAMPLING

Sampling took place in November 2010. All the samples were of oak (*Quercus* spp.). Core samples were extracted using a 15mm diameter borer attached to an electric drill. They were numbered using the prefix **deng**. The samples were removed for further preparation and analysis. Cores were mounted on wooden laths and then these were polished using progressively finer grits down to 400 to allow the measurement of ring-widths to the nearest 0.01 mm. The samples were measured under a binocular microscope on a purpose-built moving stage with a linear transducer, attached to a desktop computer. Measurements and subsequent analysis were carried out using DENDRO for WINDOWS, written by Ian Tyers (Tyers 2004).

RESULTS AND DISCUSSION

Details of the samples, and their locations, are given in Table 1. Cross-matching between the samples was generally good (Table 2) – although **mrnb07**, despite its 100 year series, could not be matched against the other samples, nor could it be dated independently. A closer inspection of this series revealed that it had a number of almost regular looking growth depressions, which could be the result of management of the tree, or some pathogen. Sample **mrnb04**, from a collar, retained complete sapwood and was found to have been felled in summer 1477, some five decades before all the other timbers. This relatively small timber may have been used previously, or simply stockpiled. The two samples from timber **mrnb09** matched each other and were combined into a single series for further analysis.

Sample **mrnb10** matched sample **mrnb09** ($t = 5.1$), and the site chronology ($t = 6.2$) – but its inclusion in the final site master chronology was found to weaken the overall matching of that site master, and it was therefore left out of the final version. A 119-year site master chronology, **MRNB**, dating 1412–1530 was constructed from the remaining series. The dating evidence for this series is given in Table 3, and the relative positions of all the dated series are shown in Figure 1. This evidence suggests the timber used was of local origin.

Only one timber retained complete sapwood, the top plate to the ground floor screen, found to have been felled in winter 1530/31. The other dated timbers had likely felling date ranges that incorporate this date, and given the good matching between them, it seems likely that they represent a single batch of timbers felled at around the same time. Construction of this building is likely to have taken place in **1531**, or within a year of two after this date.



Table 1: Details of samples taken from Bron Goronwy, Cwm Cynfal, Llan Ffestiniog.

Sample number	Timber and position	Date of series	H/S boundary date	Sapwood complement	No of rings	Mean width mm	Std devn mm	Mean sens	Felling date range
* mrrnb01	Collar, truss 1	1412-1506	1506	H/S	95	3.35	0.98	0.28	1517-47
* mrrnb02	South principal rafter, truss 1	1428-1505	1505	H/S	78	1.67	0.63	0.28	1516-46
* mrrnb03	Top plate to upper floor screen	1456-1514	1514	H/S	59	2.41	1.35	0.32	1525-55
* mrrnb04	Collar, truss 2	1424-1476	1459	17½C	53	2.47	1.39	0.28	Summer 1477
* mrrnb05	South raking strut, truss?	1446-1521	1514	7	76	1.97	1.19	0.22	1525-55
* mrrnb06	South lower purlin, bay 4	1436-1508	1508	H/S	73	1.16	0.68	0.27	1519-49
mrrnb07	North principal rafter, truss 3	undated	-	-	100	1.77	0.86	0.22	unknown
* mrrnb08	Top plate to ground floor screen	1463-1530	1512	18C	68	1.93	1.18	0.28	Winter 1530/31
mrrnb09a	West ceiling beam, ground floor	1459-1506	1505	I	48	1.33	0.41	0.27	
mrrnb09b	<i>ditto</i>	1433-1506	1505	I	74	1.24	0.36	0.24	
* mrrnb09	Mean of 09a and 09b	1433-1506	1505	I	74	1.29	0.36	0.25	1516-46
mrrnb10	East ceiling beam, ground floor	1433-1498	1492	6+12NM	66	2.37	0.95	0.19	after 1510
* = included in site mean	MRNB	1412-1530			119	1.96	0.59	0.23	

Key: H/S bdry = heartwood/sapwood boundary - last heartwood ring date; C = complete sapwood, winter felled; ½C = complete sapwood, felled the following summer; std devn = standard deviation; mean sens = mean sensitivity; NM = not measured;



A report commissioned by The North West Wales Dendrochronology Project in partnership with The Royal Commission on the Ancient and Historical Monuments in Wales (RCAHMW).

Table 2: Cross-matching between dated samples

Sample	<i>t</i> - values							
	mrnb02	mrnb03	mrnb04	mrnb05	mrnb06	mrnb08	mrnb09	
mrnb01	6.3	8.1	3.1	3.9	1.9	3.5	6.0	
mrnb02		5.7	1.5	5.5	4.9	4.3	5.5	
mrnb03			1.7	2.9	1.9	2.6	5.6	
mrnb04				1.6	1.6	-	1.3	
mrnb05					4.6	4.3	3.4	
mrnb06						1.2	3.0	
mrnb08							1.6	

- = no value calculated (less than 20 rings overlap)

Table 3: Dating evidence for the site master **MRNB AD 1412–1530** against dated reference chronologies, regional chronologies in **bold**

<i>County or region:</i>	<i>Chronology name:</i>	<i>Short publication reference:</i>	<i>File name:</i>	<i>Spanning:</i>	<i>Overlap (yrs):</i>	<i>t-value:</i>
Wales	Trefrechan barn	(Miles <i>et al</i> 2004)	TREFECHN	1423-1606	108	7.5
Herefordshire	Church House, Allensmore	(Miles <i>et al</i> 2006)	CHAM	1357-1551	119	7.4
Wales	Branas-Uchaf, Llandrillo	(Miles and Bridge 2010)	DENBY6	1388-1763	119	7.2
Northern England	Northern England Master	(Hillam and Groves 1994)	NORTH	440-1742	119	7.0
Herefordshire	Little Brockhampton Gatehouse	(Nayling 2001)	LBG-T10	1368-1543	119	7.0
Shropshire	Whittington Castle	(Miles <i>et al</i> 2004)	WHITNGTN	1351-1628	119	6.9
Wales	Royal House, Machynlleth	(Miles <i>et al</i> 2004)	ROYALHS1	1363-1560	119	6.9
Shropshire	Oswestry Old Grammar School	(Miles <i>et al</i> 2008)	OSWTRYOG	1356-1552	119	6.7
Wales	Plas Mawr House	(Miles and Haddon-Reece 1996)	PLASMWR2	1360-1578	119	6.7
Wales/borders	Hillside oaks	(Siebenlist-Kerner 1978)	GIERTZ	1341-1636	119	6.7
Shropshire	Brookgate Farm	(Miles and Haddon-Reece 1993)	BROOKGT	1362-1611	119	6.4
East Midlands	East Midlands Master	(Laxton and Litton 1988)	EASTMID	882-1981	119	6.4
West Sussex	Wenham Manor Barn, Rogate	(Miles 1998)	WENHAM2	1387-1586	119	6.3
Monmouthshire	Waun Farm	(Miles and Bridge 2010)	WAUNMN2	1335-1528	117	6.3



A report commissioned by The North West Wales Dendrochronology Project in partnership with The Royal Commission on the Ancient and Historical Monuments in Wales (RCAHMW).

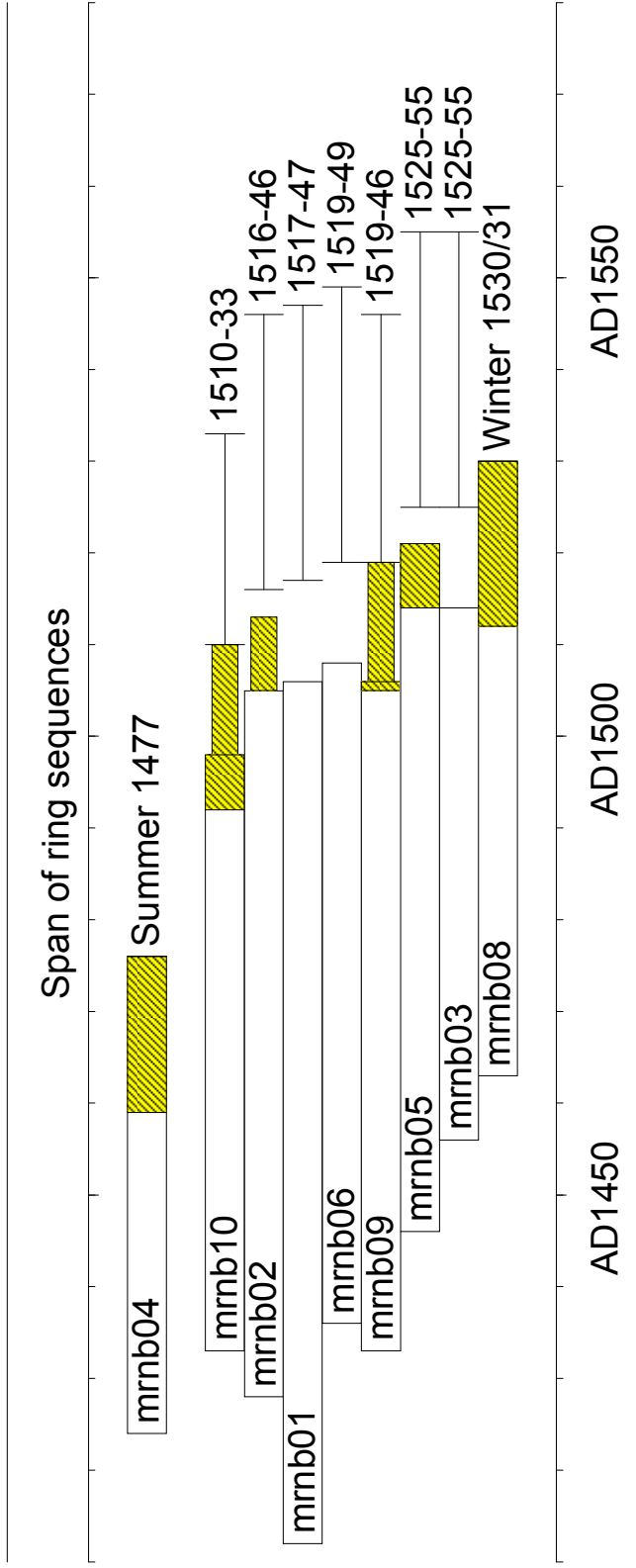


Figure 1: Bar diagram showing the relative positions of overlap of the dated series, along with their interpreted likely felling date ranges. Hatched yellow sections represent sapwood rings, and narrow sections of bar represent additional unmeasured rings



A report commissioned by The North West Wales Dendrochronology Project in partnership with The Royal Commission on the Ancient and Historical Monuments in Wales (RCAHMW).

ACKNOWLEDGEMENTS

We would like to thank the owners – Mr and Mrs G. Roberts – for allowing sampling to take place. Sampling was undertaken by Matt Hurford, to whom we are most grateful.

This study was funded by the North-West Wales Dendrochronology Project, co-ordinated by Margaret Dunn (who supplied the cover photograph), with support by the Royal Commission on Ancient and Historic Monuments of Wales – with thanks to Richard Suggett.

REFERENCES

- Baillie, M.G.L. and Pilcher, J.R. (1973) *A simple cross-dating program for tree-ring research*. **Tree Ring Bulletin**, 33, 7-14.
- Bridge, M. C. (1988) The dendrochronological dating of buildings in southern England, **Medieval Archaeology**, 32, 166-174.
- English Heritage (1998) *Guidelines on producing and interpreting dendrochronological dates*, **English Heritage, London**.
- Hillam, J. and Groves, C, 1994 Compilation of master chronologies from the North, unpublished computer file NORTH, Sheffield Dendrochronology Laboratory.
- Laxton, R. R., and Litton, C. D. (1988) An East Midlands Master Tree-Ring Chronology and its use for dating Vernacular Buildings, Univ Nottingham, Dept of Classical and Archaeology Studies, **Monograph Ser**, 3.
- Miles, D. (1997a) The interpretation, presentation, and use of tree-ring dates, **Vernacular Architecture**, 28, 40-56.
- Miles, D. H. (1998) *The tree-ring dating of Wenham Manor Barn, Rogate, West Sussex*, **Anc Mon Lab Rep**, 62/98.
- Miles, D. H. and Haddon-Reece, D. (1993) List 54 - Tree-ring dates, **Vernacular Architecture**, 24, 54-60.
- Miles, D. H. and Haddon-Reece, D. (1996) List 72 - Tree-ring dates, **Vernacular Architecture**, 27, 97-102.
- Miles, D. H., Worthington, M. J. and Bridge, M. C. (2004) Tree-ring dates, **Vernacular Architecture**, 35, 95-113.
- Miles, D. H., Worthington, M. J. and Bridge, M. C. (2006) Tree-ring dates, **Vernacular Architecture**, 37, 118-132.
- Miles, D. H., Worthington, M. J. and Bridge, M. C. (2008) Tree-ring dates, **Vernacular Architecture**, 39, 135-146.
- Miles, D. H. and Bridge, M. C. (2010) Tree-ring dates, **Vernacular Architecture**, 41, 102-110.
- Nayling, N. (2001) *Tree-ring analysis of timbers from Lower Brockhampton Gatehouse, near Bromyard, Herefordshire*, **Centre for Archaeology Report**, 98/2001.
- Siebenlist-Kerner, V. (1978) 'The Chronology, 1341-1636, for certain hillside oaks from Western England and Wales', in *Dendrochronology in Europe* (ed J M Fletcher), **BAR**, 51, 157-161.
- Tyers, I. (2004) *Dendro for Windows Program Guide 3rd edn*, **ARCUS Report**, 500b.

