

TWENTIETH CENTURY MILITARY SITES: AIRFIELDS – DISPERSED SITES AND DEFENCES

Interim Report

A THREAT-RELATED ASSESSMENT 2012-2013
DAT 115A



High Frequency Direction Finding station for Angle Airfield

Prepared by Dyfed Archaeological Trust

For Cadw



ymddiriedolaeth archaeolegol
DYFED
archaeological trust

DYFED ARCHAEOLOGICAL TRUST

RHIF YR ADRODDIAD / REPORT NO. 2012/70

RHIF Y PROSIECT / PROJECT RECORD NO. 103632

DAT 115A

Mawrth 2013

March 2013

TWENTIETH CENTURY MILITARY SITES: AIRFIELDS – DISPERSED SITES AND DEFENCES

Gan / By

Alice Pyper & Marion Page

Paratowyd yr adroddiad yma at ddefnydd y cwsmer yn unig. Ni dderbynnir cyfrifoldeb gan Ymddiriedolaeth Archaeolegol Dyfed Cyf am ei ddefnyddio gan unrhyw berson na phersonau eraill a fydd yn ei ddarllen neu ddibynnu ar y gwybodaeth y mae'n ei gynnwys

The report has been prepared for the specific use of the client. Dyfed Archaeological Trust Limited can accept no responsibility for its use by any other person or persons who may read it or rely on the information it contains.



Llywodraeth Cynulliad Cymru
Welsh Assembly Government

Ymddiriedolaeth Archaeolegol Dyfed Cyf

Neuadd y Sir, Stryd Caerfyrddin, Llandeilo, Sir
Gaerfyrddin SA19 6AF

Ffon: Ymholiadau Cyffredinol 01558 823121

Adran Rheoli Treftadaeth 01558 823131

Dyfed Archaeological Trust Limited

*The Shire Hall, Carmarthen Street, Llandeilo,
Carmarthenshire SA19 6AF*

Tel: General Enquiries 01558 823121

Heritage Management Section 01558 823131

Cwmni cyfyngedig (1198990) ynghyd ag elusen gofrestredig (504616) yw'r Ymddiriedolaeth. The Trust is both a Limited Company (No. 1198990) and a Registered Charity (No. 504616)

CADEIRYDD CHAIRMAN: C R MUSSON MBE B Arch FSA MIFA. CYFARWYDDWR DIRECTOR: K MURPHY BA MIFA

CONTENTS

SUMMARY	4
INTRODUCTION	4
PROJECT AIMS AND OBJECTIVES	4
METHODOLOGY.....	4
REFERENCES	5
GAZETTEER OF SITES.....	6
RAF ANGLE.....	7
RAF PEMBROKE DOCK	25
RAF HAVERFORDWEST.....	48

SUMMARY

Following the first year of 20th Century military Cadw funded projects in which the Airfields of south-west Wales were studied (Pyper 2012), attention has now turned to the dispersed sites and defences. These hinterland sites associated with airfields are currently in the process of being recorded and assessed. This report represents an interim statement of progress at the end of the first year of assessment. The airfields of Angle, Haverfordwest, and Pembroke Dock have so far been recorded; Templeton and Manorbier have also been visited. Further analysis and an assessment of significance will be made at the completion of the project, with this report containing a gazetteer of sites recorded so far.

INTRODUCTION

In continuation of the twentieth century military sites programme of reporting, this report stands as an interim to demonstrate the progress made looking at the Airfields: Dispersed sites and defences. The project is on-going and will conclude with a full final report in 2014.

Following the assessment of the airfields and technical areas in 2011-12, the dispersed facilities of these complexes are now being considered. These include: accommodation blocks; weapon, fuel and other storage facilities; defence systems; bombing decoys; and communication and guidance facilities. Some of these are close to airfield cores, but others can be several hundred metres from the core.

Because of the large number of airfields in Dyfed and because of the dispersed character of the facilities, and thus the concomitant issues of gaining land-owners' consent to undertake site visits, the project is spread over two years, with approximately half the facilities investigated in 2012-13 and the other half in 2013-14.

PROJECT AIMS AND OBJECTIVES

- The overall objectives of the project are:
- an application of definition, classification, quantification and distribution of these sites in southwest Wales
- assessment of the archaeological significance of these sites in both a regional and national perspective
- assessment of the vulnerability of this element of the archaeological resource,
- recommendations for scheduling and listing of key structures and buildings
- enhancement of the Regional HER.

METHODOLOGY

Various sources have been consulted in researching this project, however one stands out; Roger Thomas', 'Survey of 19th and 20th Century Military Buildings of Pembrokeshire' is a key piece of work, through which many airfield sites in Pembrokeshire have been identified. Other works have also been instrumental in providing context and histories of the aviation sites in south-west Wales including Jones 2007, Smith 1981, Cocroft and Thomas 2003, Phillips 2009, among other more general accounts. In addition local historians and enthusiasts have also been consulted including most helpfully John Evans of the Sunderland Trust.

The following methodology was adopted to achieve the project's objectives:

- A desk top appraisal compiling dossiers for each site; sourcing Air Ministry / Fleet Air Arm plans / aerial photographs / secondary sources / HER records etc.
- Site visits to each of the aviation sites, to photograph, assess and record the survival of remains, their condition and likely threats.
- Create new records and enhance existing records on the HER and catalogue all photographs
- Produce a short report including a gazetteer of sites, including assessments and a separate report including a gazetteer of scheduling and listing recommendations.

The results of the assessment will be provided at the conclusion of the project when all the sites in southwest Wales have been assessed.

REFERENCES

- Cocroft, W and Thomas, RJC. 2003. *Cold War, Building for Nuclear Confrontation 1946-1989*.
- Jones, I. 2007. *Airfields and Landing Grounds of Wales: West*.
- Phillips, A. 2009. *Brawdy Stronghold in the West*.
- Pyper, A. 2012. *Twentieth Century Military Sites: Airfields*
- Smith, DJ. 1981. *Action Stations*.
- Smith, DJ. 1989. *Britain's Military Airfields, 1939-45*.
- Thomas, RJC. 1993. *Survey of 19th and 20th Century Military Buildings of Pembrokeshire*.

GAZETTEER OF SITES

The gazetteer of sites has been arranged by airfield. Airfields are listed alphabetically, with the record for the overall airfield appearing first, followed by a map indicating the locations of sites, then sites listed numerically by Primary Record Number (PRN). Note that the sites listed here include the principal sites which have been identified by documentary assessment and fieldwork. In many cases there are other sites related to the airfields which have been recorded by previous projects and have subsequently been substantially removed or demolished, these will appear on the HER and are accessible though Archwilio.org.uk along with the sites recorded here.

Condition statements are listed in date order, with the last record relating to the current project fieldwork.

RAF ANGLE

PRN - 33439

NAME - RAF ANGLE

TYPE - Airfield

STATUS - pcnp

NGR - SM86000175

COMMUNITY - Angle

COUNTY - Pembrokeshire

SITE DESCRIPTION

Angle airfield was opened on 1st June 1941 in No 10 Group Fighter Command, with No. 32 Squadron arriving the following day, tasked to protect Pembroke Dock and escort convoys near the Welsh Coast. There was a high turnover of squadrons at Angle and the living conditions were primitive.

It is associated with the Barnes Wallace 'Highball' trials in 1943, in which a bomb was developed to bounce into railway tunnels. The Mosquito that was used to trial the bombs on the Maenclochog railway tunnel flew from Angle airfield.

In 1943 the airfield was briefly transferred to the Admiralty for target-towing, but due to wireless conflicts it returned to RAF use. It continued in use until 1945. It consisted of 3 runways, main E-W runway 1600yards, NW-SE runway at 1,200 yards and a NE-SW runway at 1000 yards. One T2 hangar, four blister hangars and five frying pan hard standings.

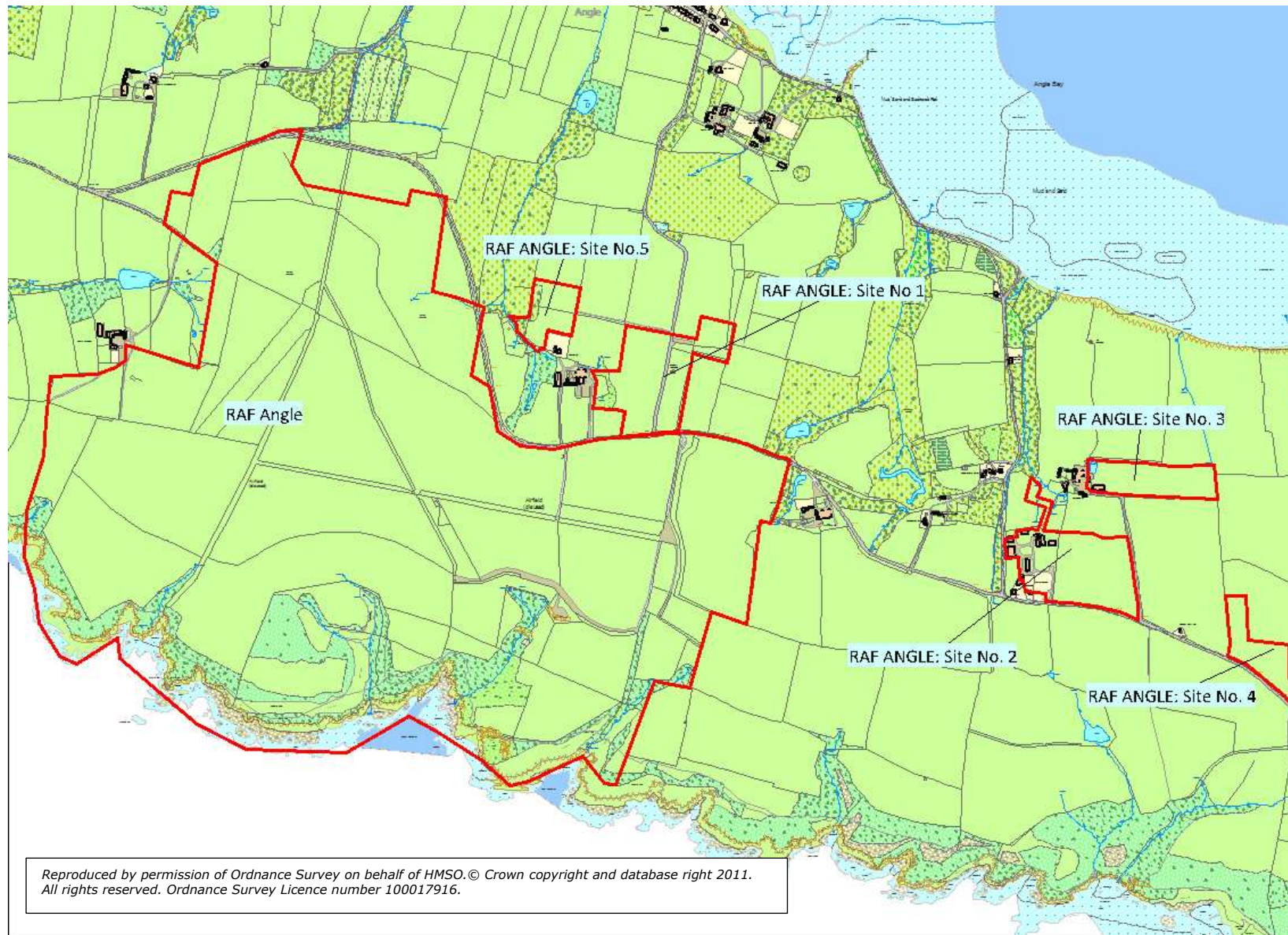
A clearance grant in the 1990s resulted in much of the fabric of the airfield being removed, although the layout of it can be traced in the field boundaries still. One dispersal pen, a pad for a blister hangar and fragments of perimeter track and runway survive at the time of a visit in 2011. A Pyper 2012.

The RAF plan of 1943 illustrates the extent of the airfield core 'Aerodrome site' along with 5 dispersed sites; Site No 1 with barracks and ablutions (PRN 102548), Site No 2 (Communal site) with sick quarters, recreational facilities and provisions stores (PRN 102549), Site No 3 Quarters for officers and sergeants housed largely in Nissen huts (PRN 102550), Site No 4 Airmen's and officers barracks and Site No 5 Ex WAAF site, formerly Laing and Nissen huts (PRN 102551). These dispersed camps have largely been demolished and returned to agricultural land, though some buildings still survive, largely at Jeffersonwells, Site No 2, (PRN 102549). A Pyper 2013.

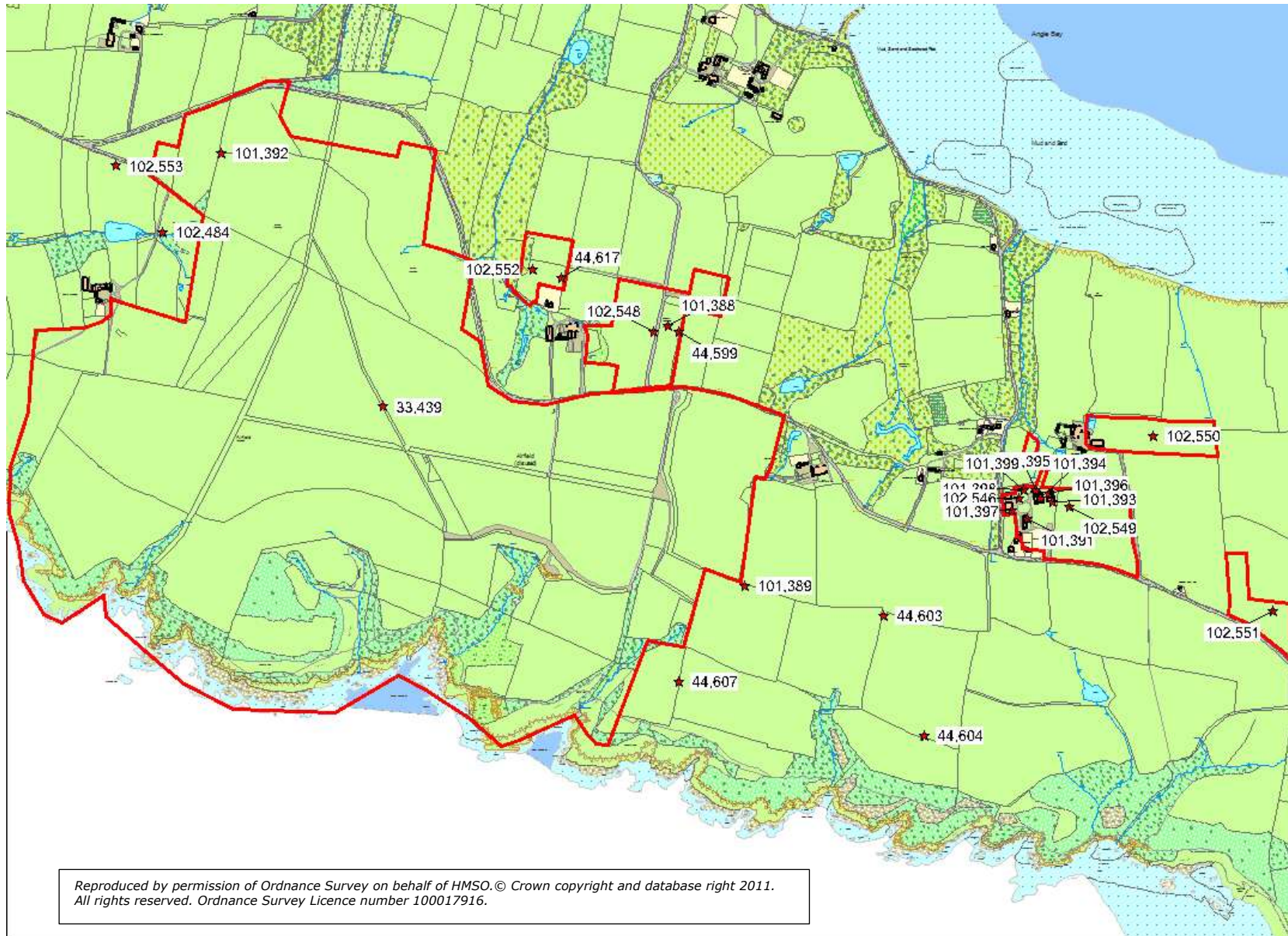
CONDITION - Various

CONDITION DESCRIPTION Much of the airfield fabric has been removed during clearance in the 1990s. The outline of the perimeter track and runways is still traceable in field boundaries, and there is potential for buried archaeological deposits across the airfield. A Pyper 2012.

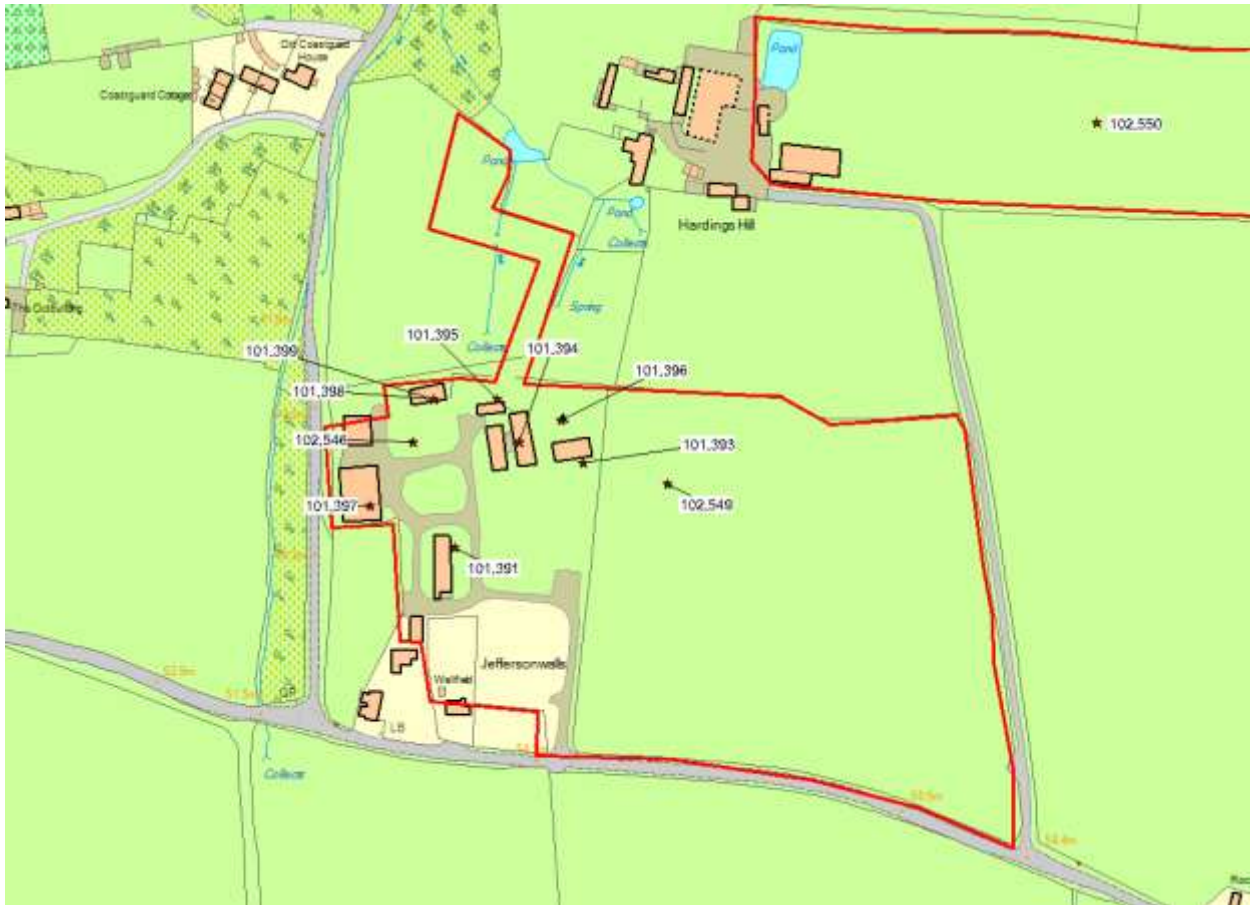
Twentieth Century Military Sites: Airfields – Dispersed sites and defences



Twentieth Century Military Sites: Airfields – Dispersed sites and defences



Twentieth Century Military Sites: Airfields – Dispersed sites and defences



Reproduced by permission of Ordnance Survey on behalf of HMSO. © Crown copyright and database right 2011.
All rights reserved. Ordnance Survey Licence number 100017916.

PRN - 44603

NAME – RAF ANGLE

TYPE - anti aircraft battery

CONDITION - Damaged

NGR - SM87200126

COMMUNITY - Angle

COUNTY - Pembrokeshire

SITE DESCRIPTION

The following description is taken from Roger Thomas's survey, 1994.

Holdfast; Circular concrete floor of a demolished 3.7 inch heavy anti-aircraft gun pit / emplacement with recessed cable duct, holdfast bolts and sockets.

When visited in 2013 there was a great deal of mud obscuring the site, but part of the circular floor c4.5m in diameter survives with large metal sockets or holdfasts set into it. Little of the associated features survive though brick and concrete debris surround the site. Much of the rest of the site has been demolished and this pad survives by virtue of being located in field gateway and therefore uncultivated. A Pyper Jan 2013.

PRN - 44607

NAME - RAF ANGLE

TYPE - anti aircraft battery

CONDITION - Damaged

NGR - SM86710109

COMMUNITY - Angle

COUNTY - Pembrokeshire

SITE DESCRIPTION

A gun pit described in Roger 's 1993 survey as 'Light Anti-aircraft Battery; Complex formerly consisting of three rectangular huts and a square fair-faced brick gun pit. Only the gun pit remains extant. Associated with RAF Angle.'. Located within a field boundary and visible as a low mound, approximately 1.5m high. Displaced concrete and brick lie over it, so it is difficult to establish how much lies in situ. A Pyper 2012.

CONDITION DESCRIPTION

When visited in 2011, it was unclear how much of the structure survives intact as concrete, and brick have been dumped in and around the structure. Visited in 2011 A. Pyper.

PRN - 101389

NAME - RAF ANGLE

TYPE - Pillbox

CONDITION - Good/ Near Intact

NGR - SM86870132

COMMUNITY - Angle

COUNTY - Pembrokeshire



SITE DESCRIPTION

Pillbox, located within hedge to the east of Angle airfield.

Similar to pillbox located to the NW of the airfield except the roof is modified to carry the turf over the embrasures and continue the hedgeline.

Described by RJC Thomas as, "Semi-sunken, irregular hexagonal plan, integral 'D' shaped Anti-Aircraft Light Machine Gun pit against N wall, fair-faced brick, flat turf

covered concrete roof on corrugated steel sheeting. Roof maintains line of hedge to the east. Wide splay embrasures fitted with Turnbull mountings." (Duplicate PRN 44601). A Pyper 2012.

PRN - 101392

NAME - RAF ANGLE

TYPE - Pillbox

CONDITION - Good/ Intact

NGR - SM85610236

COMMUNITY - Angle

COUNTY - Pembrokeshire



SITE DESCRIPTION

A brick and concrete pillbox located to the northwest of Angle airfield, within a hedgebank northeast of South Studdock Farm. Described by RJC Thomas as, "Semi-sunken, irregular hexagonal plan, integral 'D' shaped AALMG pit against N wall, fair-faced brick, flat turf covered concrete roof on corrugated steel sheeting. Protected entrance in S wall. 4 wide splay stepped embrasures

fitted with Turnbull mountings."

Similar in construction to PRN 101389 at the eastern side of the airfield. Visited Nov 2011, A. Pyper.

PRN - 101388

NAME - RAF ANGLE

TYPE - gun emplacement

STATUS - pcnp , listed building 2

NGR - SM8668601945

COMMUNITY - Angle

COUNTY - Pembrokeshire

SITE DESCRIPTION



Circular stone tower, formerly a windmill (PRN 4386), converted into a defence post during the Second World War. Concrete floor inserted, with access to first floor gained via steel rungs set into wall and hatch. Five wide splayed concrete gun embrasures fitted with Turnbull mountings in first floor. Associated with the Battle Headquarters nearby to the east, PRN 34952. Intact when visited in 2013. A Pyper 2013.

CONDITION - Good/ Near Intact

CONDITION DESCRIPTION / Survives as roofless gun emplacement. Largely intact.

PRN - 101391
NAME - RAF ANGLE
TYPE - Airmen's ablutions
STATUS - pcnp
NGR - SM87550148
COMMUNITY - Angle
COUNTY - Pembrokeshire

SITE DESCRIPTION

Ablutions block. Single storey, 9.5 bay rectangular plan, cement rendered temporary brick, corrugated asbestos cement sheeting gable roof. Twelve light standard steel



windows. Combined water tower and chimney has been demolished. Built per A.M.W.D. drawing 14364/40 & 6530/42. When visited in 2013 the floor and been dug out and lowered, the roof missing at the southern end. Steps removed at the north gable end to make a large double

doorway to allow access for machinery. A Pyper based on RJC Thomas 2013.

CONDITION - Damaged
CONDITION DESCRIPTION / None recorded

PRN - 101393
NAME - RAF ANGLE
TYPE - Games room
STATUS - pcnp
NGR - SM87610152
COMMUNITY - Angle
COUNTY - Pembrokeshire

SITE DESCRIPTION

Games room at RAF Angle site no 2. Temporary brick construction, single storey, 6 bay with a corrugated plastic roof. Windows in each bay, lengthened to ground floor, now covered with corrugated plastic. Latterly used as a potato store, however not in use when visited in 2013. A Pyper 2013.

CONDITION - Fair/ Damaged

PRN - 101394
NAME - RAF ANGLE
TYPE - Institute
STATUS - pcnp
NGR - SM87580153
COMMUNITY - Angle
COUNTY - Pembrokeshire

SITE DESCRIPTION

Linked parallel pair of temporary brick construction buildings 8.5 bays long x 3. Corrugated asbestos roof. Sixth bay of eastern range has a projecting porch on east side. West range has a brick built chimney in centre, otherwise interior has been cleared. Remains of a small latrine at south end. Latterly used as an agricultural store, though now little used. A Pyper 2013.

CONDITION - Damaged



PRN - 101395
NAME - RAF ANGLE
TYPE - Grocery and local produce store
STATUS - pcnp
NGR - SM87570155
COMMUNITY - Angle
COUNTY - Pembrokeshire

SITE DESCRIPTION

A single storey 6 bay temporary brick building, with corrugated asbestos roof. Very overgrown with ivy and ash saplings when visited in 2013. A. Pyper 2013.

CONDITION - Damaged
CONDITION DESCRIPTION / Very overgrown with ivy and saplings. A Pyper 2013

PRN - 101396

NAME - RAF ANGLE

TYPE - Blast shelter

STATUS - pcnp

NGR - SM87600154

COMMUNITY - Angle

COUNTY - Pembrokeshire

SITE DESCRIPTION

Brick built blast shelter. Very overgrown and inaccessible when visited in 2013. A Pyper.

CONDITION - Fair/ Not known

CONDITION DESCRIPTION / None recorded

PRN - 101397

NAME - RAF ANGLE

TYPE - Stand-by set house

STATUS - pcnp

NGR - SM87510150 **COMMUNITY** - Angle

COUNTY - Pembrokeshire

SITE DESCRIPTION

The remains of a stand-by set house have been incorporated into a farm building, and roofed over with corrugated tin sheeting. A Pyper 2013

Single storey, rectangular plan, cement rendered 'permanent' brick, flat asphalted reinforced concrete roof. Walls are blind, ventilator bricks at floor and eaves level. Structure enclosed by a fair-faced brick blast wall. Built per A.M.W.D. drawing 12613/40.

CONDITION - Damaged

CONDITION DESCRIPTION / None recorded

PRN - 101398
NAME - RAF ANGLE
TYPE - Christian association hostel
STATUS - pcnp
NGR - SM87540155
COMMUNITY - Angle
COUNTY - Pembrokeshire

SITE DESCRIPTION

Single storey, rectangular plan, fair-faced brick, corrugated asbestos sheeting gable roof. Small brick stack in ridge of E gable. Mono-pitch roofed annex to SW corner and porch to SE corner of S elevation. Fenestration removed. A Pyper 2013.

CONDITION - Fair/ Damaged

CONDITION DESCRIPTION / When visited in January 2013 the building was disused and in a derelict condition, no surviving windows and part of it is roofless. A Pyper 2013.

PRN - 101399
NAME - RAF ANGLE
TYPE - Settlement tank
STATUS - pcnp
NGR - SM87540155
COMMUNITY - Angle
COUNTY - Pembrokeshire

SITE DESCRIPTION

Sunken concrete and brick settlement tank. Not identified on the site visit in 2013. A Pyper 2013.

CONDITION - Near intact

PRN - 102546
NAME - RAF ANGLE
TYPE - Air raid shelter
NGR - SM87530153
COMMUNITY - Angle
COUNTY - Pembrokeshire

SITE DESCRIPTION

A Stanton Air Raid shelter, nine sections long, very overgrown but blast wall visible and chimney escape hatch. A Pyper 2013.

CONDITION - Near Intact

CONDITION DESCRIPTION Very overgrown with brambles, some dumping to the west and north.

PRN - 102548

NAME - RAF ANGLE SITE NO 1

TYPE - military camp

STATUS - None recorded

NGR - SM86650193

COMMUNITY - Angle

COUNTY - Pembrokeshire

SITE DESCRIPTION

RAF Angle Site No 1, drawn on RAF Angle site plan (1943?). Consists of the defence post or gun emplacement (PRN 101388) and battle headquarters (PRN 44599) in addition other structures which have been demolished include barracks, picket post, ablutions and drying room. When visited only the battle HQ and gun emplacement survive, everything else has been levelled. A Pyper 2013

CONDITION - various

CONDITION DESCRIPTION Much of site No 1 has been levelled, though the defence post / gun emplacement and battle headquarters survive reasonably intact. A Pyper 2013.

PRN - 102549

NAME - RAF ANGLE SITE NO 2

TYPE - military camp

STATUS - None recorded

NGR - SM87650151

COMMUNITY - Angle

COUNTY - Pembrokeshire

SITE DESCRIPTION

RAF Angle Site No 2, communal site, drawn on RAF Angle site plan (1943?). Consists of surviving structures PRN 101391 ablutions block, PRN 101393 games room, PRN 101394 Institute, PRN 101395 store, PRN 101396 blast shelter, PRN 101397 standby set house, PRN 101398 YMCA, PRN 101399 settlement tank, many other structures have been demolished. When visited in January 2013 most of the buildings were disused. A Pyper 2013

CONDITION - various

CONDITION DESCRIPTION Site no 2 is largely damaged, many of the buildings have been demolished, and those that remain are largely disused and falling into disrepair. Latterly many of the buildings have been used for agricultural purposes but now appear largely redundant. A Pyper 2013.

PRN - 102550

NAME - RAF ANGLE SITE NO 3

TYPE - military camp

STATUS - None recorded

NGR - SM87850168

COMMUNITY - Angle

COUNTY - Pembrokeshire

SITE DESCRIPTION

RAF Angle Site No 3, communal site, drawn on RAF Angle site plan (1943?) showing a complex of Nissen huts providing quarters to officers, sergeants, etc. Appears to have been completely cleared and reinstated to agricultural land. A Pyper 2013

CONDITION - Near Destroyed

CONDITION DESCRIPTION Site No 3 appears comprehensively cleared and returned to agricultural use.

PRN - 102551

NAME - RAF ANGLE SITE NO 4

TYPE - military camp

STATUS - None recorded

NGR - SM88140126

COMMUNITY - Angle

COUNTY - Pembrokeshire

SITE DESCRIPTION

RAF Angle Site No 4, drawn on RAF Angle site plan (194?) showing a complex of Nissen huts providing quarters to officers, sergeants, etc. Appears to have been completely cleared and reinstated to agricultural land. A Pyper 2013

CONDITION – Near destroyed

PRN - 102552

NAME - RAF ANGLE SITE NO 5

TYPE - military camp

STATUS - None recorded

NGR - SM86360208

COMMUNITY - Angle

COUNTY - Pembrokeshire

SITE DESCRIPTION

RAF Angle Site No 5 (EX WAAF SITE) consisted of Nissen and Laing huts. When visited in January 2013 the site has been cleared though there are the remains of concrete hut platforms and an air raid shelter (PRN 44617). A Pyper 2013.

CONDITION - Damaged

CONDITION DESCRIPTION The huts have all been removed from Site No 5, however concrete hut platforms remain intact and an air raid shelter. Visited January 2013.

PRN - 102553
NAME - RAF ANGLE
TYPE - anti aircraft battery
STATUS - None recorded
NGR - SM85380238
COMMUNITY - Angle
COUNTY - Pembrokeshire

SITE DESCRIPTION

A group of three rectangular huts identified on the RAF Angle site plan of 1943?, and identified from aerial photos by RJC Thomas as a Light Anti-aircraft battery. When visited in January 2013 no visible traces of structures could be identified. A Pyper 2013.

CONDITION - Near Destroyed

CONDITION DESCRIPTION No above ground remains visible when visited in 2013, however below ground archaeology may survive including artefactual evidence. A Pyper 2013.

PRN - 26247
NAME - HF/DF ANGLE BAY
TYPE - Radar station
STATUS - None recorded
NGR - SM92390018
COMMUNITY - Hundleton
COUNTY - Pembrokeshire

SITE DESCRIPTION

High Frequency Direction Finding Station/Fixer Station is recorded on the Pembroke Dock 6" location Plan 1944. When visited in 2013 no visible trace of the structure could be identified. A Pyper 2013.

1939-58, High Frequency Direction Finding Station/Fixer Station, now demolished. One small octagonal wooden structure with sloping walls and conical roof with aerial mast projecting, enclosed by a circular fence, one small hut and a large rectangular brick building with flat concrete roof. RJC.Thomas, 23.01.93.

CONDITION - Destroyed/ Near Destroyed

CONDITION DESCRIPTION / Although not visible there may be below ground archaeology surviving and artefactual remains. A Pyper 2013

PRN - 44599

NAME - RAF ANGLE

TYPE - battle headquarters

STATUS - None recorded

NGR - SM86710193

COMMUNITY - Angle

COUNTY - Pembrokeshire

SITE DESCRIPTION

Battle Headquarters associated with the gun emplacement PRN 101388. A sunken structure consisting of interconnecting of rooms, accessed by a flight of steps at the north end. A concrete observational cupola is sited to the south with adjacent escape hatch. Constructed as design 11008/41 - the most common type. The site appears to be intact though access not possible due to scrub and bramble growth. Visited in January 2013. A Pyper 2013.

CONDITION - Near Intact

CONDITION DESCRIPTION Appears to be intact, though very overgrown and access not possible due to excessive bramble and scrub overgrowing it. January 2013 A Pyper.

PRN - 102484

NAME - RAF ANGLE

TYPE - pump house

CONDITION - Near Intact

NGR - SM85470217

COMMUNITY - Angle

COUNTY - Pembrokeshire

SITE DESCRIPTION

Water pumping station built to supply Angle airfield. Cement rendered brick construction. A Pyper 2012.

CONDITION DESCRIPTION

Water pumphouse associated with Angle airfield. Largely intact with original windows, though some panes broken.

PRN - 44604

NAME - RAF ANGLE

TYPE - navigation aid

STATUS - None recorded

NGR - SM87300096

COMMUNITY - Angle

COUNTY - Pembrokeshire

SITE DESCRIPTION

The following description is taken from Roger Thomas's survey, 1994. High Frequency/Direction Finding; Single storey, rectangular plan, cement rendered brick, flat timber roof. Internally divided into 4 rooms. Double doorway and single door to latrine to S. elevation. One large and one small window to E & W elevations. Single large window to N. elevation. When visited in January 2013 the building was roofless and without windows or doors but otherwise the walls remain intact. Goodwick bricks incorporated into building. A Pyper 2013

CONDITION - Damaged

CONDITION DESCRIPTION When visited in 2013 the building was roofless, and without windows and doors, but the walls still stood to roof level with roof timbers surviving. A Pyper 2013.



PRN - 44617

NAME - RAF ANGLE

TYPE - air raid shelter

STATUS - None recorded

NGR - SM86430206

COMMUNITY - Angle

COUNTY - Pembrokeshire

SITE DESCRIPTION

A sunken air raid shelter is situated in the field to the north of Hubberton farm. The shelter is sunken into to the ground with the domed roof covered by turf. It is approximately 11 metres in length and has an internal structure constructed from pre-cast concrete sections. To the north there is a brick lined entrance with steps down to the shelter and an escape hatch at the south end. Visited in January 2013. A Pyper 2013.

CONDITION - Near Intact

CONDITION DESCRIPTION In a stable condition near hedgeline in farm, some bramble growing over north end. A Pyper 2013.



RAF PEMBROKE DOCK

PRN - 28427

NAME - RAF PEMBROKE DOCK

TYPE - Flying boat station

STATUS - None recorded

NGR - SM96200365

COMMUNITY - Pembroke Dock

COUNTY - Pembrokeshire

SITE DESCRIPTION

Pembroke Dock was transferred to the Air Ministry from the Admiralty in 1930 and to begin with there were no hangars, sheds or slipways to accommodate the first flying boats based there. By 1934 hangars and slipways had been constructed and adapted for use by flying boats.

From the start of the war Pembroke Dock was part of Coastal Command and the new short 'Sunderland' flying boats were introduced here. Their main role was submarine hunting at which they were by all accounts very successful. In addition they played an important part in D-day, keeping the English channel free of enemy U-boats and protecting the invasion fleet.

Whilst the Air Ministry made use of many of the existing naval dockyard buildings those structures that were constructed specifically to accommodate the airforce include a pair of 'B' type hangars, which have recently been restored, a T2 hangar, a jetty and breakwater to shelter the launches used to ferry aircrew to and from the flying boats moored in the haven. These structures relate to the RAF's use of the site and are still intact in 2011, other elements such as the slipways for the flying boats have been lost in the construction for the ferry terminal. A Pyper 2011.

On the 1944 Air Ministry map (No. 2710.44) the flying boat base consists of Site No 1 which includes the former dockyard itself, with slipways and technical buildings. Site No 1 lies to the west of Commercial road, to the south divided by Fort road and including the area occupied by the Hospital. In addition there are dispersed sites; Nos. 2, 3, 4, and 5 and additional requisitioned properties. A. Pyper 2013.

CONDITION - Damaged/ various

CONDITION DESCRIPTION / Some elements of the flying boat station survive intact, and the two B hangars have recently been restored. However the jetty is in a very poor condition. A Pyper 2012.

Twentieth Century Military Sites: Airfields – Dispersed sites and defences



Reproduced by permission of Ordnance Survey on behalf of HMSO. © Crown copyright and database right 2011. All rights reserved. Ordnance Survey Licence number 100017916.



Reproduced by permission of Ordnance Survey on behalf of HMSO. © Crown copyright and database right 2011. All rights reserved. Ordnance Survey Licence number 100017916.

Twentieth Century Military Sites: Airfields – Dispersed sites and defences



Reproduced by permission of Ordnance Survey on behalf of HMSO. © Crown copyright and database right 2011. All rights reserved. Ordnance Survey Licence number 100017916.



Reproduced by permission of Ordnance Survey on behalf of HMSO. © Crown copyright and database right 2011. All rights reserved. Ordnance Survey Licence number 100017916.

Twentieth Century Military Sites: Airfields – Dispersed sites and defences



Reproduced by permission of Ordnance Survey on behalf of HMSO. © Crown copyright and database right 2011. All rights reserved. Ordnance Survey Licence number 100017916.

PRN - 102539

NAME - RAF PEMBROKE DOCK

TYPE - Graffiti

STATUS - None recorded

NGR - SN0200091

COMMUNITY - Lamphey

COUNTY - Pembrokeshire

SITE DESCRIPTION

Graffitied Beech tree to the east of the enclosure in which the barrack huts for the personnel from RAF Pembroke Dock were stationed during the Second World War. Various initials inscribed and dates, one of which appears to be 'RAF 1940'. A Pyper 2013



CONDITION - Intact

CONDITION DESCRIPTION None recorded

PRN - 102540

NAME - RAF PEMBROKE DOCK

TYPE - Memorial

STATUS - None recorded

NGR - SN01890088

COMMUNITY - Lamphey

COUNTY - Pembrokeshire

SITE DESCRIPTION

Concrete memorial slab located in woodland to the east of Lamphey Bishop's Palace. Concrete, cast with the Fleur de Lys within a wreath of laurels? This is apparently the badge of the Manchester Regiment. The cast concrete was fractured and broken and encroached on by self-seeded trees when visited in January 2013. A Pyper

CONDITION - Damaged

CONDITION DESCRIPTION concrete memorial cracked and broken. Lies within woodland and is quite overgrown. A. Pyper Jan 2013



PRN - 102543

NAME - LAMPHEY COURT

TYPE - Graffiti

STATUS - None recorded

NGR - SN01800100

COMMUNITY - Lamphey

COUNTY - Pembrokeshire

SITE DESCRIPTION



Graffiti carved into a beech tree at the entrance to Lamphey Court. Representing the left sleeve of a U.S. Army NCO's service dress uniform, the insignia (or patches) are from top to bottom: Unit patch, representing the division, corp command or army to which the man is currently assigned. Rank insignia: First Sergeant. Service stripe (also called a hash mark) representing three years' service. Overseas bars, each bar represents six months overseas service, so it appears this man had already been overseas for two years. This would appear to date from 1943 when I and K companies of the 110th Infantry, 28th US Infantry Division were stationed at a site to the rear and to the left of Lamphey Court. A Pyper 2013.

CONDITION - Intact

PRN - 102544

NAME - LAMPHEY COURT

TYPE - Graffiti

STATUS - None recorded

NGR - SN01800101

COMMUNITY - Pembroke Dock

COUNTY - Pembrokeshire

SITE DESCRIPTION

Graffiti carved into a second beech tree at Lamphey Court. Representing the left sleeve of a U.S. Army NCO's service dress uniform, the insignia (or patches) are from top to bottom: Unit patch, representing the division, corp command or army to which the man is currently assigned. Rank insignia: First Sergeant. Service stripe (also called a hash mark) representing three years' service. Overseas bars, each bar represents six months overseas service, so it appears this man had already been overseas for two years. This would appear to date from 1943 when I and K companies of the 110th Infantry, 28th US Infantry Division were stationed at a site to the rear and to the left of Lamphey Court. A Pyper 2013.

CONDITION - Intact

PRN - 26178

NAME - RAF PEMBROKE DOCK SITE NO.5

TYPE - Military camp

STATUS - None recorded

NGR - SN01830124

COMMUNITY - Lamphey

COUNTY - Pembrokeshire

SITE DESCRIPTION

Dispersed site associated with RAF Pembroke Dock (c1939-45) consisting of timber barrack huts, latrines and drying rooms, bath house, institute, dining room and sewage disposal works. Located within woodland at Windsor Farm. Access to woodland was not granted. A Pyper 2013.

1939-45, Royal Airforce Camp. Consisting of hut bases, two latrine and drying rooms, one bath house and one sewage disposal works. RJC.Thomas, 14.01.93.

CONDITION - Near Intact

CONDITION DESCRIPTION

PRN - 26248

NAME - RAF PEMBROKE DOCK SITE NO 2

TYPE - Radio station

STATUS - None recorded

NGR - SM97060280

COMMUNITY - Pembroke Dock

COUNTY - Pembrokeshire

SITE DESCRIPTION

Site No 2 is the Women's Auxiliary Air Force (WAAF) site identified on the 1944 Air Ministry Plan for Pembroke Dock (2710.44). It lists a Nissen guard hut, 4 air raid shelters, 1 static water tank, 2 trench blast shelters, 1 wireless transmission block, 8 wireless masts, timber cycle shed, laundry, WAAF ablutions and latrines, reception hut, WAAF latrine and drying hut (temporary brick construction), 10'x10' timber fuel store, 6 WAAF quarters, all timber hutting. When visited in 2013 the site is now a cricket ground and the only extant building is the Telegraphy Block. A Pyper 2013.

1934-57, Communications/Wireless Transmission Station, now cricket ground and clubhouse. Nissen guard hut, 4 air raid shelters, 1 static water tank, 2 trench blast shelters, 1 wireless transmission block, 8 wireless masts, timber cycle shed, laundry, WAAF ablutions and latrines, reception hut, WAAF latrine and drying hut (temporary brick construction), 10'x10' timber fuel store, 6 WAAF quarters, all timber hutting. RJC.Thomas,23.01.93.

CONDITION - Damaged/ various

CONDITION DESCRIPTION / None recorded

PRN - 26249

NAME - RAF PEMBROKE DOCK

TYPE - Radio station

STATUS - None recorded

NGR - SM97060280

COMMUNITY - Pembroke Dock

COUNTY - Pembrokeshire

SITE DESCRIPTION

A brick built Wireless Telegraphy Transmitting Block, located in RAF Pembroke Dock Site No 2. A single storey permanent brick building with slate roof. See RJC Thomas description. When visited in 2013 the building is in use as a cricket club house. A Pyper 2013

1934-57, Communications/Wireless Transmission Station, now cricket clubhouse. Single storey, brick built, cruciform plan, slate gables roofs. The west range formerly functions as the accommodation area, north range, offices, fuel store, boiler room, store and workshop, east range W/T and R/T transmission room, and the south range as the engine room, transformer room and switch gear. RJC,Thomas, 23.01.93.

CONDITION - Intact/ Near Intact

CONDITION DESCRIPTION / None recorded



PRN - 26250

NAME - RAF PEMBROKE DOCK

TYPE - Air raid shelter

STATUS - None recorded

NGR - SM97060274

COMMUNITY - Pembroke Dock

COUNTY - Pembrokeshire

SITE DESCRIPTION

Stanton Air Raid Shelter, part of the complex of RAF Pembroke Dock Site No 2. Not seen when visited in 2013 and maybe demolished. A Pyper2013.

1940-45, Communications Air Raid Shelter, now uses as a store. Semi-sunken parabolic bolted pre-cast concrete panels. Entrance in west wall protected by a brick blast wall. Rectangular concrete escape hatch in roof at eastern end. RJC.Thomas, 23.01.93.

CONDITION - Near Intact/ Not known

PRN - 26251

NAME - RAF PEMBROKE DOCK SITE NO 3

TYPE - Military camp

STATUS - None recorded

NGR - SM96800255

COMMUNITY - Pembroke Dock

COUNTY - Pembrokeshire

SITE DESCRIPTION

Site No 3 was a barrack hutted camp for RAF Pembroke Dock. See R JC Thomas's description. Concrete access road survives, otherwise no structures survive on what is a mobile home park when visited in 2013. A Pyper 2013

1940-45, Camp, now a caravan site. Consisting of Nissen guard hut 36' X 16' (10.9m X 4.88m), timber cycle shed, temporary brick, showers and ablutions, latrines, and thirteen Nissen barrack huts 36' X 16' (10.98m X 4.88m) and three parabolic concrete air raid shelters. All demolished, floors used as hardstandings for caravans. RJC.Thomas, 24.01.93.

CONDITION - Destroyed/ Near Destroyed

CONDITION DESCRIPTION / None recorded

PRN - 26282

NAME - LLANION BARRACKS

TYPE - Officers mess

CONDITION - Intact

STATUS - None recorded

NGR - SM97140412

COMMUNITY - Pembroke Dock

COUNTY - Pembrokeshire

SITE DESCRIPTION

Council offices, formerly Headquarters and Officer's Mess of Llanion Barracks. During Pembroke Docks RAF days (c1930-59) the buildings were designated as Administrative Offices. Red brick pedimented building dated 1904. A Pyper based on RJC Thomas description March 2013

1903-72, Headquarters Building/Officers Mess, now council offices. A large, two storey, brick built, 'L' plan, hipped slate roof, with brick pedimented projections. 7 bay main elevations, 1st floor windows arranged 1-2-2-2-2-2-1. Ground floor brick porch with stone balustrade, two brick canted bay windows. Return range fenestration arranged 1-2-2-2-1-2-1. Central pediment dated 1904, Mosaic in hall dated 1905. RJC.Thomas, 12.03.93.

CONDITION DESCRIPTION / None recorded



PRN - 26283

NAME - LLANION BARRACKS

TYPE - Quarters

STATUS - None recorded

NGR - SM97140416

COMMUNITY - Pembroke Dock

COUNTY - Pembrokeshire

SITE DESCRIPTION

Red brick building formerly Officers Quarters for Llanion Barracks, in use by the RAF c1930-1959, though difficult to establish description from Air Ministry plan. In use as government offices. A Pyper March 2013.

1903-72, Barrack, Officers Quarters, now council offices. Two storey, six bay main elevation, brick built, slate gabled roof. RJC.Thomas, 12.03.93.

CONDITION - Intact

CONDITION DESCRIPTION / None recorded

PRN - 26284

NAME - LLANION BARRACKS

TYPE - Storehouse

STATUS - None recorded

NGR - SM97130402

COMMUNITY - Pembroke Dock

COUNTY - Pembrokeshire

SITE DESCRIPTION

Former barrack store, single storey brick building. In use by the RAF c1930-1959, and shown on Air Ministry plan. When visited in 2013 windows have been shuttered up and it appears disused though in fair condition. A Pyper March 2013.

1903-72, Barrack, Store. Single storey, brick built, four bay, gabled slate roof with domed ventilator set centrally in roof. Brick porches with gabled slate roofs provides entrances in south east and north west walls. Twelve light, sliding sash windows provide lighting in south west and north east walls (four in each wall). RJC.Thomas, 12.03.93.

CONDITION - Intact

PRN - 26290

NAME - LLANION BARRACKS

TYPE - Guardhouse

STATUS - None recorded

NGR - SM97220407

COMMUNITY - Pembroke Dock

COUNTY - Pembrokeshire

SITE DESCRIPTION

Former recreation rooms, former Guardhouse at Llanion, now residential. See RJC Thomas description. In use by the RAF c1930-1959, and shown on Air Ministry plan. A Pyper March 2013.

1903-72, Guardhouse/Guardroom, now a restaurant. RJC.Thomas, 12.03.93.

CONDITION - Intact

CONDITION DESCRIPTION / None recorded

PRN - 26292

NAME - LLANION BARRACKS

TYPE - Recreation building

STATUS - None recorded

NGR - SM97280409

COMMUNITY - Pembroke Dock

COUNTY - Pembrokeshire

SITE DESCRIPTION

Former recreation rooms, now Kingdom Hall. See RJC Thomas description. In use by the RAF c1930-1959, and shown on Air Ministry plan. A Pyper March 2013.

1903-72, Barrack Recreation Rooms, now occupied by the Jehovahs Witnesses Church. RJC.Thomas, 12.03.94.

CONDITION - Intact

PRN - 26294

NAME - LLANION BARRACKS

TYPE - Barracks

STATUS - None recorded

NGR - SM97260415

COMMUNITY - Pembroke Dock

COUNTY - Pembrokeshire

SITE DESCRIPTION

Sussex Row, former soldiers barracks at Llanion, now flats. See RJC Thomas description. In use by the RAF c1930-1959, and shown on Air Ministry plan. A Pyper March 2013.

1903-72, Soldiers Barracks, now flats. Two storey, brick built, 28 bay, arranged in four groups of seven, doorway to ground floor set centrally in each seven bay range. Gabled slate roof. Substantially altered from original appearance, large single window occupying position of three combined sash and casement windows. Verandah formerly on east wall. RJC.Thomas, 12.03.93.

CONDITION - Intact

PRN - 26295

NAME - LLANION BARRACKS

TYPE - Barracks

STATUS - None recorded

NGR - SM97320417

COMMUNITY - Pembroke Dock

COUNTY - Pembrokeshire

SITE DESCRIPTION

Dorset Row, former soldiers barracks at Llanion, now flats. See RJC Thomas description. In use by the RAF c1930-1959, and shown on Air Ministry plan. A Pyper March 2013.

1903-72, Soldiers Barracks, present use flats. Two storey, brick built, 28 bay, arranged in four groups of seven, doorway to ground floor set centrally in each seven bay range, front and back. Gabled slate roof. Substantially altered in appearance from original. Two storey verandah set against west wall. RJC.Thomas, 12.03.93.

CONDITION - Intact



PRN - 26296

NAME - LLANION BARRACKS

TYPE - Barracks

STATUS - None recorded

NGR - SM97340418

COMMUNITY - Pembroke Dock

COUNTY - Pembrokeshire

SITE DESCRIPTION

Kent Row, former soldiers barracks at Llanion, now flats. See RJC Thomas description. In use by the RAF c1930-1959, and shown on Air Ministry plan. A Pyper March 2013.

1903-72, Soldiers Barracks, present use flats. Two storey, brick built, 28 bay, arranged in four groups of seven, doorway to ground floor set centrally in each seven bay range, front and back. Gabled slate roof. Substantially altered in appearance from original. Two storey verandah set against east wall. RJC.Thomas, 12.03.93.

CONDITION - Intact/ Near Intact

PRN - 26720

NAME - LLANION BARRACKS 5 SHROPSHIRE ROAD.

TYPE - Quarters

STATUS - None recorded

NGR - SM97520411

COMMUNITY - Pembroke Dock

COUNTY - Pembrokeshire

SITE DESCRIPTION

Officers Married Quarters part of RAF Pembroke Dock, c1930. Two storey, brick built, semi detached houses with service range at the rear. Hipped tiled roof with two storey canted bay under deep eaves. A Pyper based on RJC Thomas description, 2013.

c1930, Officers Married Quarters, now private residence. Two storey, brick built, semi-detached, 'L' plan with rear service range. Hipped tile roof, two storey canted bay under deep eaves. Second floor frontage of canted bay tile clad. RJC.Thomas, 26.11.93.

CONDITION - Intact

PRN - 26721

NAME - LLANION BARRACKS 4 SHROPSHIRE ROAD.

TYPE - Quarters

STATUS - None recorded

NGR - SM97530411

COMMUNITY - Pembroke Dock

COUNTY - Pembrokeshire

SITE DESCRIPTION

Officers Married Quarters part of RAF Pembroke Dock, c1930. Two storey, brick built, semi detached houses with service range at the rear. Hipped tiled roof with two storey canted bay under deep eaves. A Pyper based on RJC Thomas description, 2013.

CONDITION - Intact

PRN - 26722

NAME - LLANION BARRACKS 3 SHROPSHIRE ROAD.

TYPE - Quarters, Married quarters

STATUS - None recorded

NGR - SM97550412

COMMUNITY - Pembroke Dock

COUNTY - Pembrokeshire

SITE DESCRIPTION

Officers Married Quarters part of RAF Pembroke Dock, c1930. Two storey, brick built, semi detached houses with service range at the rear. Hipped tiled roof with two storey canted bay under deep eaves. A Pyper based on RJC Thomas description, 2013.

CONDITION - Intact

PRN - 26723

NAME - LLANION BARRACKS 2 SHROPSHIRE ROAD.

TYPE - Quarters, Married quarters

STATUS - None recorded

NGR - SM97570413

COMMUNITY - Pembroke Dock

COUNTY - Pembrokeshire

SITE DESCRIPTION

Officers Married Quarters part of RAF Pembroke Dock, c1930. Two storey, brick built, semi detached houses with service range at the rear. Hipped tiled roof with two storey canted bay under deep eaves. A Pyper based on RJC Thomas description, 2013.

CONDITION - Intact

PRN - 26724

NAME - LLANION BARRACKS 1 SHROPSHIRE ROAD.

TYPE - Quarters, Married quarters

STATUS - None recorded

NGR - SM97580414

COMMUNITY - Pembroke Dock

COUNTY - Pembrokeshire

SITE DESCRIPTION

Officers Married Quarters part of RAF Pembroke Dock, c1930. Two storey, brick built, semi detached houses with service range at the rear. Hipped tiled roof with two storey canted bay under deep eaves. A Pyper based on RJC Thomas description, 2013.

CONDITION - Intact

PRN - 26725

NAME - LLANION BARRACKS

TYPE - Workshop

STATUS - None recorded

NGR - SM96990409

COMMUNITY - Pembroke Dock

COUNTY - Pembrokeshire

SITE DESCRIPTION

Painted brick building formerly Motor Transport Workshop. In use by the RAF c1930-1959, though difficult to establish description from Air Ministry plan. A Pyper March 2013.

CONDITION - Intact

PRN - 26739

NAME - LLANION BARRACKS

TYPE - Gymnasium, Chapel

STATUS - None recorded

NGR - SM97080397

COMMUNITY - Pembroke Dock

COUNTY - Pembrokeshire

SITE DESCRIPTION

Former Theatre, Gymnasium and chapel. See RJC Thomas description. In use by the RAF c1930-1959, though difficult to establish description from Air Ministry plan. A Pyper March 2013.

CONDITION - Intact

PRN - 28457

NAME - RAF PEMBROKE DOCK

TYPE - Bomb store

STATUS - None recorded

NGR - SM95550354

COMMUNITY - Pembroke Dock

COUNTY - Pembrokeshire

SITE DESCRIPTION

Two single storey bomb stores behind blast wall PRN 28458. Brick built, square plan with flat concrete roof, set within earth banks. Some steel gantry survives to front, three doors to west now removed. A Pyper 2013

CONDITION - Intact



PRN - 28458

NAME - RAF PEMBROKE DOCK

TYPE - Blast wall

STATUS - None recorded

NGR - SM95540356

COMMUNITY - Pembroke Dock

COUNTY - Pembrokeshire

SITE DESCRIPTION

Concrete blast wall, runs along the top of the shingle beach between the high water mark and the two bomb stores behind it - PRN, 28457. Approximately 7m high and 3m wide at its battered base. Part of RAF Pembroke Dock Flying Boat Base. See RJC Thomas description. When visited in 2011 it stood intact though somewhat overgrown. A Pyper 2013.

c1934, Flying Boat Base, Blast Wall, Bomb Dump, now derelict. Hollow re-inforced concrete wall, the space of which is infilled with coarse limestone rubble. RJC.Thomas, 14.12.93. Concrete blast wall for 28456. JH May 1998

CONDITION - Intact



PRN - 28666

NAME - RAF PEMBROKE DOCK SITE NO 4.

TYPE - Military camp

STATUS - None recorded

NGR - SN01920090

COMMUNITY - Lamphey

COUNTY - Pembrokeshire

SITE DESCRIPTION

Dispersed site associated with RAF Pembroke Dock, 1939-45, now demolished. Defined on 1944 Air Ministry plan (Dwg No. 2710.44) Formerly consisted of twelve barrack huts (4 timber, 8 nissen), two timber latrines, and one stone ablutions block, dispersed in field to the east of Lamphey Palace ruins. When visited in Jan 2013 only concrete bases were visible in wooded enclosure, many self-seeded trees and much undergrowth obscuring hut bases. Some larger beech trees on the boundary to the east inscribed with graffiti, which appears to date to 1940's. Description based on R Thomas's record and updated following site visit 2013, A Pyper.

CONDITION - Destroyed/ Near Destroyed

CONDITION DESCRIPTION / Hut bases survive in a very overgrown and wooded enclosure to the east of Lamphey Bishop's palace.

PRN - 3262

NAME - PEMBROKE TOWER; MARTELLO TOWER

TYPE - Artillery tower

STATUS - listed building LB 2*, scheduled ancient monument PE332

NGR - SM95520361

COMMUNITY - Pembroke Dock

COUNTY - Pembrokeshire

SITE DESCRIPTION



Martello tower of four storeys with a rooftop gun platform. Irregular octagonal plan, dated 1851, but reused in the Second World War. In private ownership when visited in 2013. A Pyper 2013.

CONDITION - Near Intact/ Intact

CONDITION DESCRIPTION / None recorded

PRN - 35098

NAME - RAF PEMBROKE DOCK

TYPE - Radio station

STATUS - None recorded

NGR - SM95520341

COMMUNITY - Pembroke Dock

COUNTY - Pembrokeshire

SITE DESCRIPTION

Wireless station identified by Roger Thomas, 328/000, with a square, single storey, three bay bungalow in the centre of the plot. Slate gabled roof. The earlier radio masts have gone, to be replaced by two communications masts. A Pyper 2013

CONDITION - Not Known/ Near Intact



PRN - 60259

NAME - HOLYLAND

TYPE - House

STATUS - listed building 6357 II

NGR - SM9988101766

COMMUNITY - Pembroke

COUNTY - Pembrokeshire

SITE DESCRIPTION

Holyland House was requisitioned in the Second World War and used as RAF sick quarters associated with RAF Pembroke Dock. Recorded as such on the 6" Pembroke Dock record site plan of 1944. A Pyper 2013.

CONDITION - Intact

CONDITION DESCRIPTION Intact 19th C house, undergoing refurbishment when visited in 2013. A Pyper 2013.

RAF HAVERFORDWEST

PRN - 28498

NAME – RAF HAVERFORDWEST

TYPE - Airfield

NGR - SM96091872

COMMUNITY - Rudbaxton

COUNTY - Pembrokeshire

SITE DESCRIPTION

RAF Haverfordwest Airfield was a parent to the satellite airfield at Templeton. Construction began in 1941, however aerial photographs taken in 1942 show the airfield still under construction, and it wasn't until 1943 that the airfield was complete and No. 3 (Coastal) Operational Training Unit moved in. They were tasked with training complete crews in general reconnaissance skills and the use of Leigh Lights - powerful lights to identify and target U-boats. In 1944 No. 3 OTU disbanded to be replaced by No. 4 Refresher Flying Unit, delivering aircraft all over the country.

A further satellite landing ground was situated to the north at Rudbaxton (PRN 101699).

By March 1945 the airfield was filled with aircraft including the Spitfire, Mosquito, Hurricane, Lysander, Beaufighter and Martinet.

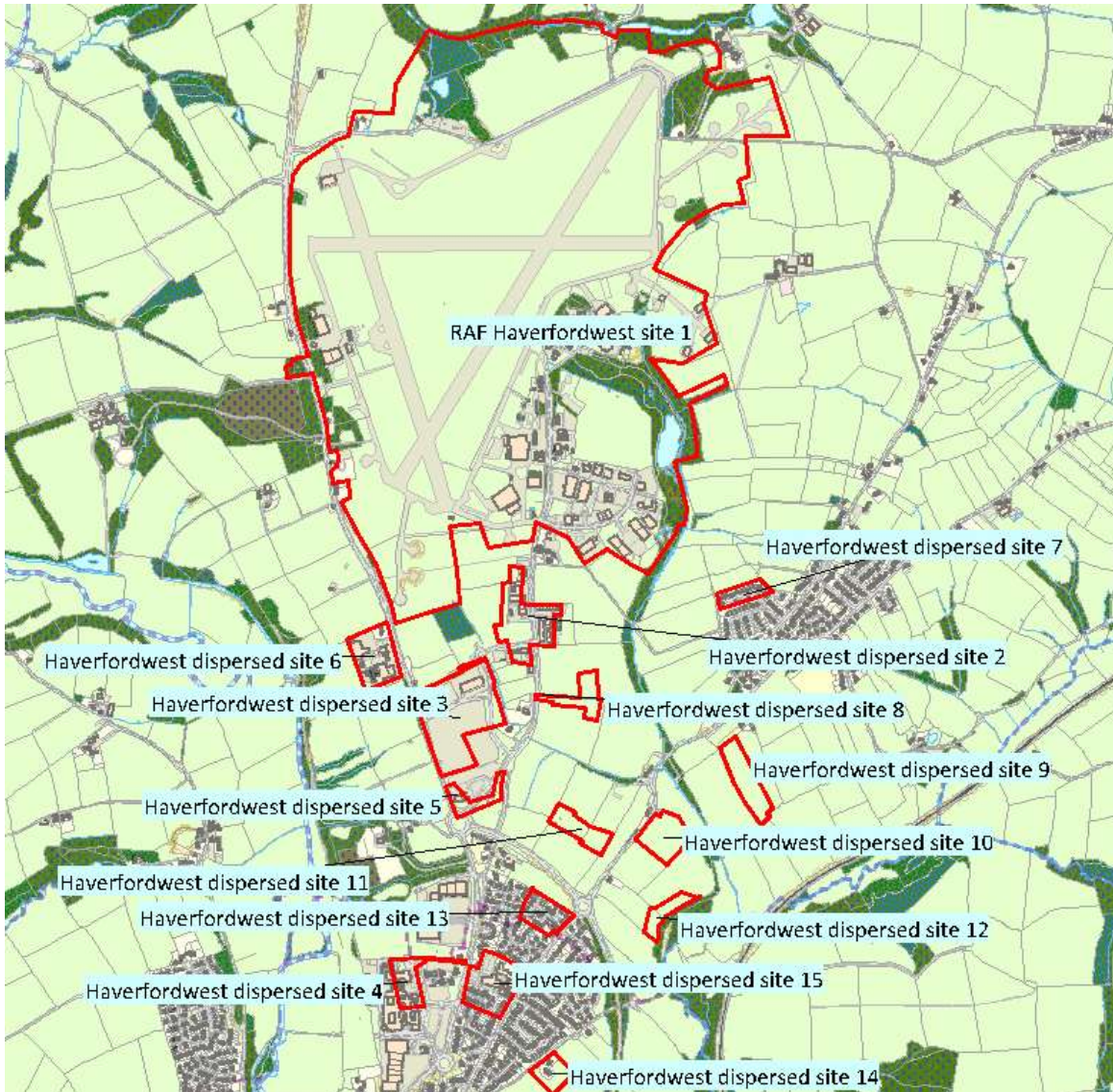
The airfield consisted of 3 concrete runways with tarmac, NE-SW 1700 yards long, NNW-SSE 1260 yards and E-W at 1200 yards, with 34 frying pan hardstandings dispersed around the airfield. Bomb stores were located to the north of the airfield and technical and training areas including the watch office / control tower to the east. Accommodation was located to the south.

The airfield is now in use as a civil airport, managed by Pembrokeshire County Council with a new control tower and hangars to the west. The old control tower forms part of the Pembrokeshire show ground and many other buildings survive and have been incorporated into showground or industrial use. The dispersal pens lie partly in agricultural land and partly under an industrial estate.

Visited in Nov 2011, A. Pyper 2012.

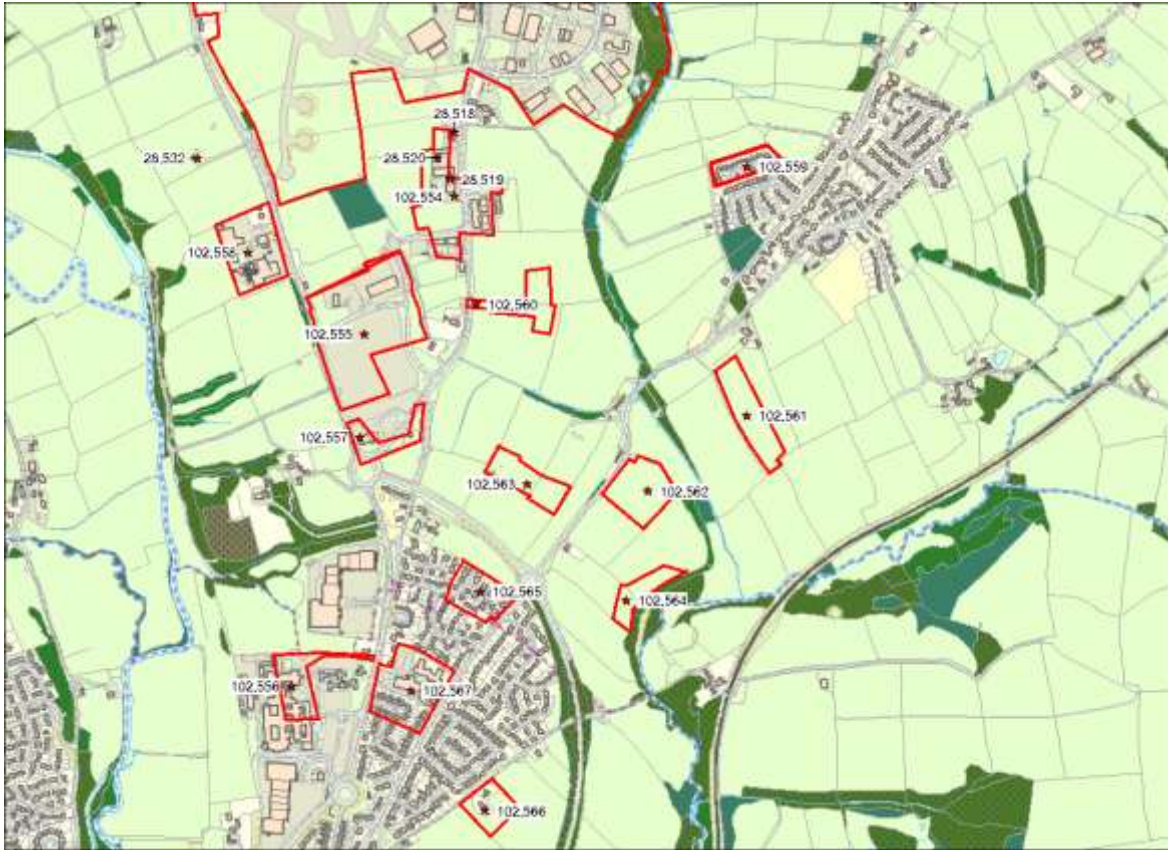
In addition to the Core Site No 1 there are 15 dispersed sites with Haverfordwest airfield, largely grouped to the south of the airfield itself. When visited in 2013, many of the sites had been cleared completely, however there are some surviving buildings associated with the complex. A Pyper 2013.

Twentieth Century Military Sites: Airfields – Dispersed sites and defences



Reproduced by permission of Ordnance Survey on behalf of HMSO. © Crown copyright and database right 2011. All rights reserved. Ordnance Survey Licence number 100017916.

Twentieth Century Military Sites: Airfields – Dispersed sites and defences



Reproduced by permission of Ordnance Survey on behalf of HMSO. © Crown copyright and database right 2011.
All rights reserved. Ordnance Survey Licence number 100017916.

PRN - 102554

NAME - RAF HAVERFORDWEST SITE NO 2

TYPE - military training site

STATUS - None recorded

NGR - SM96101806

COMMUNITY - Rudbaxton

COUNTY - Pembrokeshire

SITE DESCRIPTION

RAF Haverfordwest Site No 2 (Instructional) is identified on the Haverfordwest Site Record Plan 4733/44. Here training was undertaken in Turret Instructional building PRN 28518. When visited in 2013 other buildings were also surviving. A Pyper 2013.

CONDITION - various

CONDITION DESCRIPTION Some buildings survive relatively intact, though others have been demolished. A Pyper 2013

PRN - 102555

NAME - RAF HAVERFORDWEST SITE NO 3

TYPE - military camp

STATUS - None recorded

NGR - SM95891774

COMMUNITY - Rudbaxton

COUNTY - Pembrokeshire

SITE DESCRIPTION

RAF Haverfordwest Site No 3 (Communal) is identified on the Haverfordwest Site Record Plan 4733/44. Here barrack huts and recreational facilities were provided for the airmen and women of RAF Haverfordwest. When visited in 2013 only one surviving building was identified. A Pyper 2013.

CONDITION - Near Destroyed

CONDITION DESCRIPTION The communal site has been cleared and only one surviving building has been identified. When visited in 2013 some new buildings have been erected on the site. A Pyper

PRN - 102556

NAME - RAF HAVERFORDWEST SITE NO 4

TYPE - military hospital

STATUS - None recorded

NGR - SM95721692

COMMUNITY - Rudbaxton

COUNTY - Pembrokeshire

SITE DESCRIPTION

RAF Haverfordwest Site No 4 (Sick Quarters) is identified on the Haverfordwest Site Record Plan 4733/44. Here the sick quarters barrack huts and mortuary stood. The site has been completely destroyed and is now occupied by Withybush General Hospital. A Pyper 2013.

CONDITION - Destroyed

CONDITION DESCRIPTION Site has been cleared and is now occupied by Withybush General Hospital. A Pyper 2013.

PRN - 102557

NAME - RAF HAVERFORDWEST SITE NO 5

TYPE - military camp

STATUS - None recorded

NGR - SM95881750

COMMUNITY - Rudbaxton

COUNTY - Pembrokeshire

SITE DESCRIPTION

RAF Haverfordwest Site No 5 is identified on the Haverfordwest Site Record Plan 4733/44. Here stood barrack huts for Airmen and officers. When visited in 2013 the site had been completely cleared. A Pyper 2013.

CONDITION - Near Destroyed

CONDITION DESCRIPTION The buildings have been completely cleared from the former site no 5. A Pyper 2013

PRN - 102558

NAME - RAF HAVERFORDWEST SITE NO 6

TYPE - military camp

STATUS - None recorded

NGR - SM95621793

COMMUNITY - Rudbaxton

COUNTY - Pembrokeshire

SITE DESCRIPTION

RAF Haverfordwest Site No 6 is identified on the Haverfordwest Site Record Plan 4733/44. Here stood barrack huts for airmen, sergeants and officers. When visited in 2013 the site had previously been cleared and redeveloped. A Pyper 2013.

CONDITION - Destroyed

CONDITION DESCRIPTION The buildings have been cleared from Site No 6, and much of the site has been redeveloped. Visited 2013, A Pyper.

PRN - 102559

NAME - RAF HAVERFORDWEST SITE NO 7

TYPE - military camp

STATUS - None recorded

NGR - SM96781813

COMMUNITY - Rudbaxton

COUNTY - Pembrokeshire

SITE DESCRIPTION

RAF Haverfordwest Site No 7 is identified on the Haverfordwest Site Record Plan 4733/44. Here stood barrack huts for airmen, sergeants and officers. When visited in 2013 the site was found to have been redeveloped into a housing estate. A Pyper 2013.

CONDITION - Destroyed

CONDITION DESCRIPTION The site has been redeveloped into a housing estate when visited in 2013, A Pyper.

PRN - 102560

NAME - RAF HAVERFORDWEST SITE NO 8

TYPE - military camp

STATUS - None recorded

NGR - SM96151781

COMMUNITY - Rudbaxton

COUNTY - Pembrokeshire

SITE DESCRIPTION

RAF Haverfordwest Site No 8 is identified on the Haverfordwest Site Record Plan 4733/44. Here stood barrack huts for airmen, sergeants and officers. When visited in 2013 the site was found to have been cleared and reinstated to agricultural land and was under pasture. A Pyper 2013.

CONDITION - Near Destroyed

CONDITION DESCRIPTION The site of the former airmen's quarters has been cleared and reinstated into agricultural land and was under pasture when visited in 2013. A *Pyper*.

PRN - 102561

NAME - RAF HAVERFORDWEST SITE NO 9

TYPE - military camp

STATUS - None recorded

NGR - SM96781755

COMMUNITY - Rudbaxton

COUNTY - Pembrokeshire

SITE DESCRIPTION

RAF Haverfordwest Site No 9 is identified on the Haverfordwest Site Record Plan 4733/44. Here stood barrack huts for airmen, sergeants and officers. Access was not gained on the site visit in 2013, however aerial photographs from 2009 suggest the site has been cleared and returned to agricultural use. A Pyper 2013.

CONDITION - Near Destroyed

CONDITION DESCRIPTION A site visit was not carried out, however aerial photographs from 2009 show the at the site has been cleared and returned to agricultural use. A Pyper 2013.

PRN - 102562

NAME - RAF HAVERFORDWEST SITE NO 10

TYPE - military camp

STATUS - None recorded

NGR - SM95531737

COMMUNITY - Rudbaxton

COUNTY - Pembrokeshire

SITE DESCRIPTION

RAF Haverfordwest Site No 10 is identified on the Haverfordwest Site Record Plan 4733/44. Here stood barrack huts for airmen, sergeants and officers. When visited in 2013 the site had been cleared and returned to agricultural use. A Pyper 2013.

CONDITION - Near Destroyed

CONDITION DESCRIPTION The site has been cleared and returned to agricultural use. A Pyper 2013

PRN - 102563

NAME - RAF HAVERFORDWEST SITE NO 11

TYPE - military camp

STATUS - None recorded

NGR - SM96271739

COMMUNITY - Rudbaxton

COUNTY - Pembrokeshire

SITE DESCRIPTION

RAF Haverfordwest Site No 11 is identified on the Haverfordwest Site Record Plan 4733/44. Here stood barrack huts for airmen, sergeants and officers. Access was not gained on the site visit in 2013, however aerial photographs from 2009 suggest that most of the site has been cleared, although some buildings may remain along with the outline of hut bases which can be identified. A Pyper 2013.102563

CONDITION - various

CONDITION DESCRIPTION It appears from 2009 Aerial photos that much of the site has returned to agricultural use, however some buildings may remain, along with hut bases. A Pyper 2013.

PRN - 102564

NAME - RAF HAVERFORDWEST SITE NO 12

TYPE - military camp

STATUS - None recorded

NGR - SM96501712

COMMUNITY - Rudbaxton

COUNTY - Pembrokeshire

SITE DESCRIPTION

RAF Haverfordwest Site No 11 is identified on the Haverfordwest Site Record Plan 4733/44. Here stood barrack huts for airmen, sergeants and officers. Access was not gained on the site visit in 2013, however aerial photographs from 2009 suggest that the site has been cleared, and returned to agricultural use. A Pyper 2013.102563

CONDITION - Near Destroyed

CONDITION DESCRIPTION The site has been cleared and returned to agricultural use. A Pyper 2013

PRN - 102565

NAME - RAF HAVERFORDWEST SITE NO 13

TYPE - military camp

STATUS - None recorded

NGR - SM96161714

COMMUNITY - Rudbaxton

COUNTY - Pembrokeshire

SITE DESCRIPTION

RAF Haverfordwest Site No 13 is identified on the Haverfordwest Site Record Plan 4733/44. Here stood barrack huts for airmen, sergeants and officers. When visited in 2013 the site had been cleared and a housing estate now occupies the site. A Pyper 2013.

CONDITION - Destroyed

CONDITION DESCRIPTION The former site 13 is now occupied by a housing estate. A Pyper 2013.

PRN - 102566

NAME - RAF HAVERFORDWEST SITE NO 14

TYPE - radio station

STATUS - None recorded

NGR - SM96171663

COMMUNITY - Rudbaxton

COUNTY - Pembrokeshire

SITE DESCRIPTION

RAF Haverfordwest Site No 14 is identified on the Haverfordwest Site Record Plan 4733/44. Here stood the wireless radio building, transformer and masts. When visited in 2013 the site had been cleared and a new residential house occupies the site of the W/T building. A Pyper 2013.

CONDITION - Near Destroyed

CONDITION DESCRIPTION The site has been cleared, though a new residential house occupies the site of the former wireless building. A Pyper 2013.

PRN - 102567

NAME - RAF HAVERFORDWEST SITE NO 15

TYPE - military camp

STATUS - None recorded

NGR - SM96001691

COMMUNITY - Rudbaxton

COUNTY - Pembrokeshire

SITE DESCRIPTION

RAF Haverfordwest Site No 15 (WAAF) is identified on the Haverfordwest Site Record Plan 4733/44. Here stood barrack huts for sergeants and airwomen. Decontamination centre, sick quarters etc. When visited in 2013 the site had been cleared and a housing estate now occupies the site. A Pyper 2013.

CONDITION - Destroyed

CONDITION DESCRIPTION The site of the WAAF camp has been cleared and redeveloped into a housing estate. A Pyper 2013.

PRN - 28518
NAME - RAF HAVERFORDWEST
TYPE - Turret instructional building
STATUS - None recorded
NGR - SM96101821
COMMUNITY - Rudbaxton
COUNTY - Pembrokeshire

SITE DESCRIPTION

Turret instructional building, Type 'A', with 3 bays. For the instruction of air crew in a simulated gun turret. When visited in Nov 2011 it was in use as a garage workshop. A. Pyper 2012.



CONDITION - Intact

PRN - 28519
NAME - RAF HAVERFORDWEST
TYPE - Training structure
STATUS - None recorded
NGR - SM96091810
COMMUNITY - Rudbaxton
COUNTY - Pembrokeshire

SITE DESCRIPTION



Recorded on the Air Ministry plan as a Gunnery and Crew Procedure Building. Nine by five bay temporary brick construction with a corrugated asbestos gable roof. Reclad with corrugated iron on the south gable. Tall 30 light windows in each bay. When visited in 2013 in use as a garage, and some bays have been broken through to create

openings. A Pyper 2013.

1942-45, Gunnery and Crew Procedure Building, present use garage. One and a half storey, rendered 'temporary brick' construction, 9 X 5 bay rectangular plan, pitched corrugated asbestos gable roof. Tall 30 light standard steel windows per bay. Built per Air Ministry drawing 4597/41. RJC.Thomas, 22.01.93.

CONDITION -Intact

PRN - 28520
NAME - RAF HAVERFORDWEST
TYPE - Link trainer
STATUS - None recorded
NGR - SM96061815
COMMUNITY - Rudbaxton
COUNTY - Pembrokeshire

SITE DESCRIPTION



Identified on the Air Ministry plan of the Haverfordwest this single storey, temporary brick construction and re-clad corrugated iron roof. When visited in 2013 was in use as a store. A Pyper 2013.

CONDITION - Intact/
Near Intact

CONDITION DESCRIPTION / Still largely intact though re-clad corrugated iron roof and an extended roof over the front. A Pyper 2013.

PRN - 28532
NAME - RAF HAVERFORDWEST
TYPE - Beacon
STATUS - None recorded
NGR - SM95501815
COMMUNITY - Rudbaxton
COUNTY - Pembrokeshire



SITE DESCRIPTION

A brick built enclosure which formed the Main Beacon for RAF Haverfordwest. Consists of a brick walled enclosure c 1.5m high with a concrete floor within. Converted for agricultural use when visited in 2013 with the southwest wall enclosed

and roofed for stock. A Pyper 2013

CONDITION - Near Intact/ Damaged
CONDITION DESCRIPTION / Modified for agricultural use though the brick enclosure appears reasonably intact. A Pyper 2013

PRN - 28673

NAME - UPPER SCOLTON

TYPE - navigation beacon

STATUS - None recorded

NGR - SM98192246

COMMUNITY - Spittal

COUNTY - Pembrokeshire

SITE DESCRIPTION



Outer navigational beacon for RAF Haverfordwest. Consists of a square brick walled enclosure measuring c 9m with walls 1.5m high. When visited in 2013, the east wall has been demolished but otherwise the walls are intact. A Pyper 2013.

CONDITION - Near Intact/ Damaged

CONDITION DESCRIPTION / The east wall of this structure has been demolished, but otherwise the walls are complete. Visited 2013 A Pyper.

PRN - 102488

NAME - RAF HAVERFORDWEST

TYPE - beacon

CONDITION - Near Intact

NGR - SM96822020

COMMUNITY - Rudbaxton

COUNTY - Pembrokeshire



SITE DESCRIPTION

Rectangular red brick structure with a later pitched roof, pedestrian access in south wall and later double doorway inserted into north wall. Associated with the picket post (PRN 102487) to the south, these structures form the Inner Beacon, part of a landing system to guide airplanes into Haverfordwest airfield and associated with the Main and Outer Beacon.

Visited Nov 2011, A.Pyper 2012.

CONDITION DESCRIPTION

Roof and walls appear intact. A Pyper 2012.

TWENTIETH CENTURY MILITARY SITES: AIRFIELDS

RHIF YR ADRODDIAD / REPORT NO. 2011/48

RHIF Y PROSIECT / PROJECT RECORD NO.102416

Mawrth 2012

March 2012

Paratowyd yr adroddiad hwn gan / This report has been prepared by Alice Pyper

Swydd / Position: Project Manager: Heritage Management

Llofnod / Signature Dyddiad / Date 30th March 2012

Mae'r adroddiad hwn wedi ei gael yn gywir a derbyn sêl bendith

This report has been checked and approved by Ken Murphy

ar ran Ymddiriedolaeth Archaeolegol Dyfed Cyf.

on behalf of Dyfed Archaeological Trust Ltd.

Swydd / Position: Director

Llofnod / Signature Dyddiad / Date

Yn unol â'n nôd i roddi gwasanaeth o ansawdd uchel, croesawn unrhyw sylwadau sydd gennych ar gynnwys neu strwythur yr adroddiad hwn

As part of our desire to provide a quality service we would welcome any comments you may have on the content or presentation of this report



INVESTOR IN PEOPLE

BUDDSODDWR MEWN POBL